



**140** <sup>#</sup>  
COMPANIES



**175** <sup>#</sup>  
PLACED STUDENTS



• MECH. CAD • CIVIL CAD • BIM CAD • ELEC. CAD • ACCOUNTING • GRAPHICS • DIGITAL MARKETING

**IN FOR TRAINING , DEVELOP SKILLS & LEAVE WITH JOB**



## WELCOME TO ELECTRICAL CAD SOFTWARE TRAINING & PLACEMENTS

**140** <sup>#</sup>



**175** <sup>#</sup>



**COMPANIES**

**PLACED STUDENTS**

**Managing Director**

Varada Uday Bhaskar

ME Mechanical Engg. OU University

16+ Years of Exp

Ex-Employee of (Majorly worked with)

Cyient, Tech Mahindra, Quest Global & Caterpillar -Rail



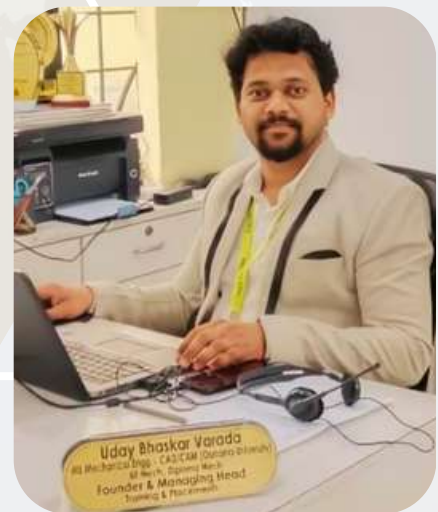
**Click our website for Software Course Programs**

<https://caddeskbangalore-bommanhalli.com/>



**Click our website for Placed students & Partners**

<https://cadenggr.com/placement-services>



Uday Bhaskar Varada  
ME Mechanical Engg. CAD/CAM (Osaka University)  
16+ Years of Exp. Majorly worked with  
Cyient, Tech Mahindra, Quest Global & Caterpillar -Rail  
Founder & Managing Head  
Training & Placement





(Software Training & Placement Services)

**140<sup>+</sup>** COMPANIES  **175<sup>+</sup>** PLACED STUDENTS



• MECH. CAD • CIVIL CAD • BIM CAD • ELEC. CAD • ACCOUNTING • GRAPHICS • DIGITAL MARKETING

Sincere thanks to all the respective Parents, Dedicated Faculty & Team Members. Appreciate Students Joining our centre from various places (Many districts of Karnataka, AP, Tamilnadu, Kerala, Westbengal, Bihar, Orissa, Arunachal Pradesh and other locations with the trust you have in our TRAINING & PLACEMENT process

Special thanks to the 140+ registered Organizations for recruiting our CAD/IT students from various domains and maintaining healthy longterm relationship



**PRIDE MOMENT**  
**ACHIEVED ANOTHER MILESTONE**  
520+ Organizations - Final Interviews  
140+ Registered Companies  
175+ Placed Students

**140<sup>+</sup>** COMPANIES

**175<sup>+</sup>** PLACED STUDENTS

Placement Partner

**BHASKARS ENGINEERING DESIGN & IT CENTER**

<https://cadenggr.com/placement-services>

+91 - 80500 91122 80500 41122



**140<sup>+</sup>**  
COMPANIES



**175<sup>+</sup>**  
PLACED STUDENTS



• MECH. CAD • CIVIL CAD • BIM CAD • ELEC. CAD • ACCOUNTING • GRAPHICS • DIGITAL MARKETING

## CONTENT

- Page 4** About us & the softwares we teach
- Page 5** Professional Diploma in Electrical CAD Courses
- Page 6** Content of the Electrical CAD Courses
- Page 7** Our Powerful Placement Strategy
- Page 8 to 12** Sample Electrical projects of our CAD Students
- Page 13 & 14** Technically Important Things for Interview & Career
- Page 15** Course Fees & Structure (2 course & 3 Courses)
- Page 16 & 17** Overview of our Placement Partners
- Page 18 to 20** Our Placed Students
- Page 21** Glimpse of our Placement Thumb Sign rule
- Page 22 & 23** Glimpse of our Skill Training Sessions
- Page 24** Guest Visit to our center (Directors / CEO / VP /etc)
- Page 25** Glimpse of our Social Service Events
- Page 26 & 27** Awards, Events & Celebrations
- Page 28** Best Training Quality Award
- Page 29** Placement Category Course Program
- Page 30** Sample Certification
- Page 31** Join & Refer for a bright career
- Page 32** Important Question & Answers for Career
- Page 33** Job Selection Criteria in Organizations
- Page 34** Time for Registration and Contact

SINCE 2007

**(Software Training & Placement Services)**



**140+**  
 COMPANIES



**175+**  
 PLACED STUDENTS



• MECH. CAD • CIVIL CAD • BIM CAD • ELEC. CAD • ACCOUNTING • GRAPHICS • DIGITAL MARKETING

We **Bhaskars Engineering Design & IT Center** in collaboration with **software Training Partner CADDESK/ITDesk** which is one the leading software training Institute in India - located in **Bommanhalli & Madiwala** Bangalore are providing Software Training & Job Placement.

We teach wide variety of Software's for Engineering & Degree Students **CIVIL/ARCH./INTERIOR/MECH./PRODUCTION/AUTOMOBILE/ELECTRICAL/PUC/DEGREE (B.com/BBA/BA/BSC/BCA/others)/ PG/MASTERS**

We aim to strengthen the students in the society, to help them reach their goals by providing **Skill Development**- Software Skills + Communication Skills + Domain Skills & Guaranteed Placement which long-last for their Career.



**CIVIL ENGINEERING**  
**SOFTWARES**

- Auto CAD
- 3DS Max
- REVIT Structure
- REVIT Architecture
- REVIT MEP
- STAAD Pro
- Etabs
- V-Ray
- Google Sketch up
- Enscape
- Quantity Take off
- and others.

**MECH.ENGINEERING**  
**SOFTWARES**

- Auto CAD
- SolidWorks
- Catia
- NX Cad
- Nx Cam
- CREO
- Ansys WB
- REVIT MEP
- INVENTOR
- GD & T
- and others.

**ELECTRICAL ENGG.**  
**SOFTWARES**

- Auto CAD Elec.
- PLC/Scada
- Matlab
- E-Plan
- Primavera
- Revit MEP
- And others.

**IT ENGINEERING**  
**SOFTWARES**

- MS Office
- Photoshop
- Corel Draw
- C language
- C++
- Core Java
- Advance Java
- Python
- Tally
- PHP
- .Net
- AWS
- SAP FICO/MM
- HTML
- JQuery
- My SQL &
- Digital Marketing

**Placement Partner**

**BHASKARS ENGINEERING DESIGN & IT CENTER**

<https://cadenggr.com/placement-services>

**+91 - 80500 91122 80500 41122**



(Software Training & Placement Services)



**140+**  
 COMPANIES



**175+**  
 PLACED STUDENTS



• MECH. CAD • CIVIL CAD • BIM CAD • ELEC. CAD • ACCOUNTING • GRAPHICS • DIGITAL MARKETING

**PROFESSIONAL DIPLOMA IN ELECTRICAL CAD COURSES**

**AutoCAD Electrical:**



AutoCAD Electrical is a specialized toolset within the AutoCAD software suite, designed for creating and modifying electrical control systems.

It includes features like automated wire numbering, circuit building, and report generation, boosting productivity for control engineering tasks. This toolset helps professionals create, modify, and document electrical control systems efficiently, using an industry-specific toolset for electrical design.

**Revit MEP:**



Revit MEP is a specialized version of the Autodesk Revit software, focused on modeling Mechanical, Electrical, and Plumbing (MEP) systems within a building information modeling (BIM) environment. It allows users to create

3D models of MEP systems including ductwork, piping, electrical conduits, and equipment. coordinate them with other architectural & structural models. Revit MEP is used by electrical engineers to design and document electrical systems in buildings. It allows for integrated design, analysis, and documentation of electrical components, circuits, and equipment.

**E-Plan Electric:**



Eplan Electric is a software solution specifically designed for electrical engineers to plan and design electrical systems. It's used for creating schematics, managing projects, and generating documentation, streamlining the electrical engineering process.

Eplan Electric automates repetitive tasks and uses standardized templates, leading to faster design processes and reduced errors.



**(Software Training & Placement Services)**

**140<sup>+</sup>** COMPANIES  **175<sup>+</sup>** PLACED STUDENTS



• MECH. CAD • CIVIL CAD • BIM CAD • ELEC. CAD • ACCOUNTING • GRAPHICS • DIGITAL MARKETING

**CONTENT (AutoCAD Electrical, Revit MEP & E-Plan)**

**AutoCAD Electrical**

- Student will be starting from the Basics of AutoCAD 2d for 3-4 sessions, since the knowledge and commands of basic AutoCAD are important.
- Student will be able to prepare wide variety of 2d drawings
- Circuit drawings
- Wiring drawings
- Schematic drawings
- Panel drawings
- Plc Drawings
- Ladders
- Creation and use of Existing Electrical symbols - Connectors, terminals, transformers, resistors, diodes & rectifiers.
- Student will also understand creation of drawing templates,
- Project management, editing tools, legend creation
- Identification of drawing errors
- Report generation etc.

**REVIT MEP**

- Student will be starting from the Basics of Revit Arch. for 3-4 sessions.
- In Revit Arch basics student will learn how to create the walls, partitions, slab, Roof, Doors, Windows & Project Units.
- Revit MEP is Building Information Modeling software where a student can learn Mechanical, Electrical & Plumbing.
- Student will gain the Knowledge of HVAC (Heating, Ventilation & Air Conditioning)
- Plumbing & Piping design
- Electrical layout
- Editing tools
- Family Creation, Spaces & Zones.
- Creation of Power Circuits
- Creating Switch Systems
- Cable tray, Electrical components/ Equipment's
- Electrical devices etc.
- Fire fighting

**E-Plan Electric**

- E-Plan is a higher end software in a broader range provides service solutions in the fields of Electrical, Automation & Mechatronic engineering.
- E-Plan is one of world's leading design software solutions for Machine, Plant, Automobiles & Panel Builders.
- E -Plan helps in avoiding errors and increase productivity. Student will be learning:
  - E-Plan Data Portal
  - Graphical Editor tools
  - Panel drawings
  - Creating schematics
  - Creating project
  - Editing tools & Identification of Devices
  - Report generation &
  - Project management etc.



**140<sup>+</sup>**  
COMPANIES

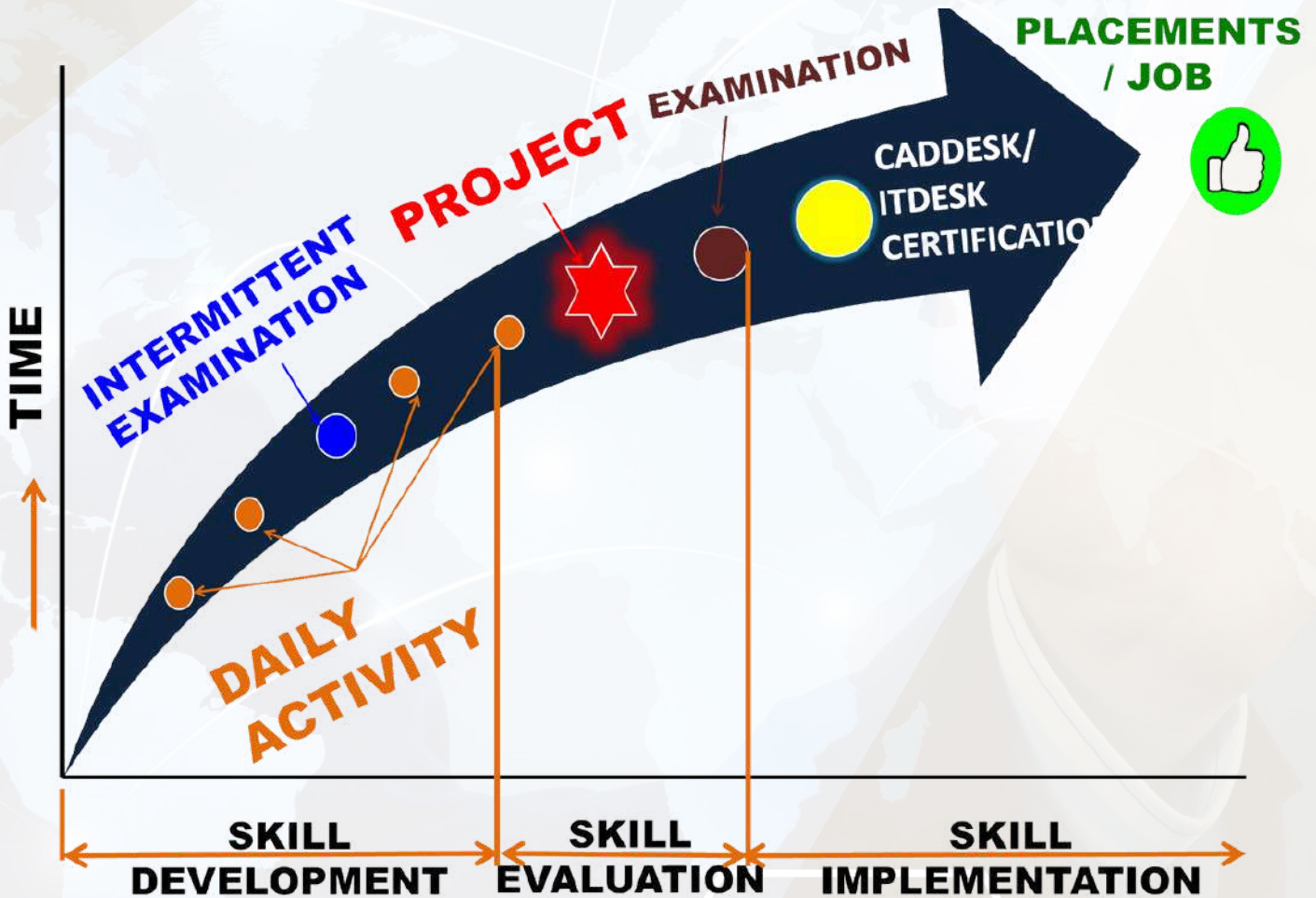


**175<sup>+</sup>**  
PLACED STUDENTS



• MECH. CAD • CIVIL CAD • BIM CAD • ELEC. CAD • ACCOUNTING • GRAPHICS • DIGITAL MARKETING

## OUR POWERFUL PLACEMENT STRATEGY



- 100+ ACTIVITIES ON VARIOUS SOFTWARES
- AMPLE AMOUNT OF PRACTICE TIME
- CAD & IT - SPEED UP EXAMINATION
- CREATIVE & INNOVATIVE PROJECTS
- TECHNICAL & PRACTICAL SESSIONS
- CAREER AWARENESS SESSIONS
- COMPLETE & CLEAR RESUME
- MULTIPLE INTERVIEW OPPORTUNITIES

### Placement Partner

**BHASKARS ENGINEERING DESIGN & IT CENTER**

<https://cadenggr.com/placement-services>

+91 - 80500 91122 80500 41122

SINCE 2007

(Software Training & Placement Services)



**140** <sup>+</sup>  
 COMPANIES



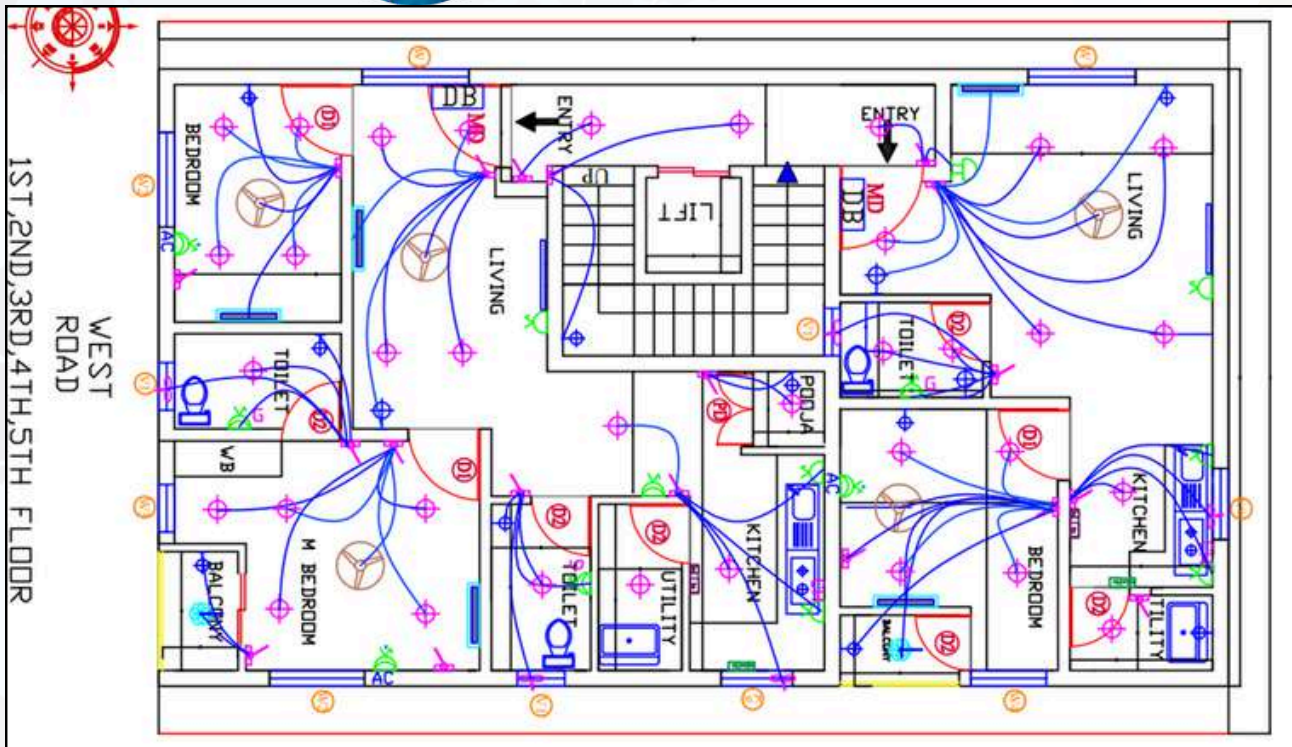
**175** <sup>+</sup>  
 PLACED STUDENTS



• MECH. CAD • CIVIL CAD • BIM CAD • ELEC. CAD • ACCOUNTING • GRAPHICS • DIGITAL MARKETING

**SAMPLE ELECTRICAL PROJECTS OF OUR STUDENTS**

Created by: Karthick  
 ID: 8419 / 225  
 Building Electrification



ELECTRICAL LEGEND		QTY	WATTS	TOTAL W	
	SWITCH BOARD AT 1050 MM FROM FFL.	18	-	-	-
	CEILING LIGHT 20W	33	20 w	20 w	660 W
	WALL BRACKET LIGHT AT 2100 MM FROM FFL.	13	9W	9W	117W
	BELL AT 2400 FROM FFL.	2	-	-	-
	2/3 PIN 6A SWITCHED SOCKET OUTLET AT 300 MM FROM FFL.	3	60W	60W	180W
	3 PIN 6/16A SWITCHED SOCKET OUTLET AT 2100 MM FROM FFL FOR AC	3	200W	3000W	9000W
	3 PIN 6/16A SWITCHED SOCKET OUTLET AT 300 MM FROM FFL.	2	200W	200W	200W
	3 PIN 6/16A SWITCHED SOCKET OUTLET AT 1800 MM FROM FFL FOR GEYSER	3	200W	2000W	6000W
	3 PIN 25A SWITCHED SOCKET OUTLET FOR AC AT 300 MM FROM FFL.	1	-	-	-
	2/3 PIN 6A SWITCH SOCKET OUTLET FOR CHIMNEY	2	60W	60W	120W
	EXHAUST FAN AS PER WINDOW DETAIL.	5	40W	40W	200W
	CEILING FAN	5	80W	80W	400W
	4 Switch and 1 Socket 5A	-	-	-	-
	2 Switch and 1 Socket 16A REEFIGERATOR	2	800W	800W	1600W
	2 SWITCH 2 SCOKET 16A	2	-	-	-
	Hanging light	2	-	-	-
	Tube light	2	20W	20W	40W
THIS IS ONE FLOOR READING 1ST TO 5TH (18471)*5 = 73668 W					18417 W



SINCE 2007

(Software Training & Placement Services)



**140**<sup>+</sup>  
COMPANIES



**175**<sup>+</sup>  
PLACED STUDENTS



- MECH. CAD • CIVIL CAD • BIM CAD • ELEC. CAD • ACCOUNTING • GRAPHICS • DIGITAL MARKETING

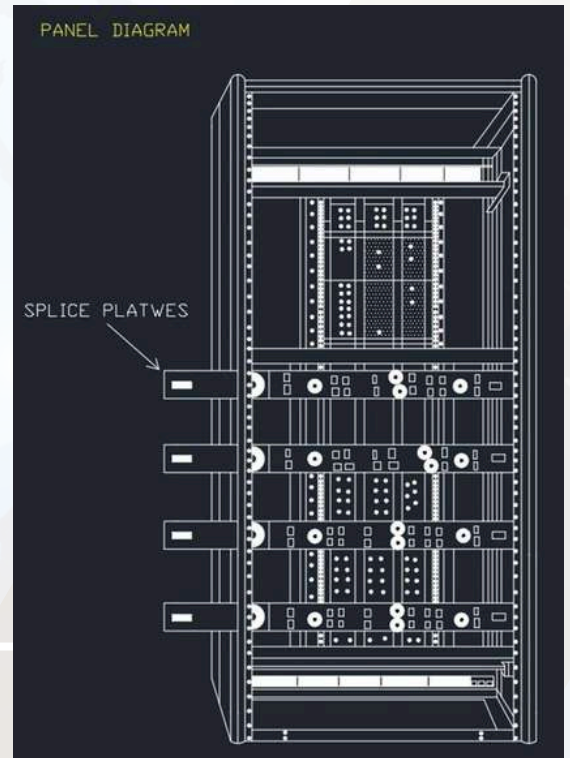
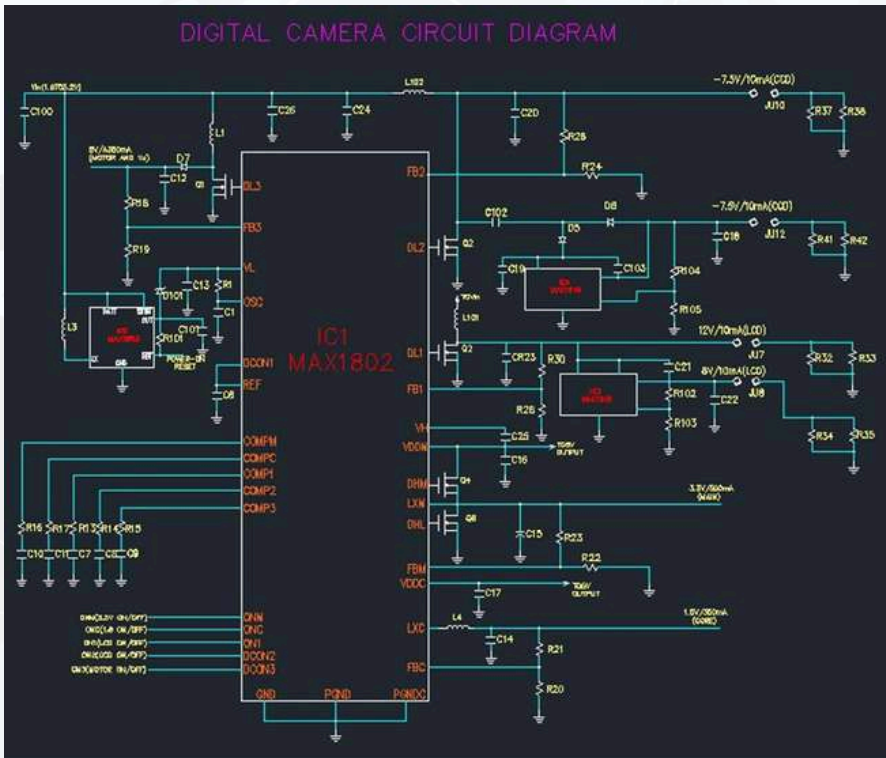
## SAMPLE ELECTRICAL PROJECTS OF OUR STUDENTS

Created by: N Lokesh  
ID: 8419 / 142  
Various Electrification  
Drawings & HVAC lines

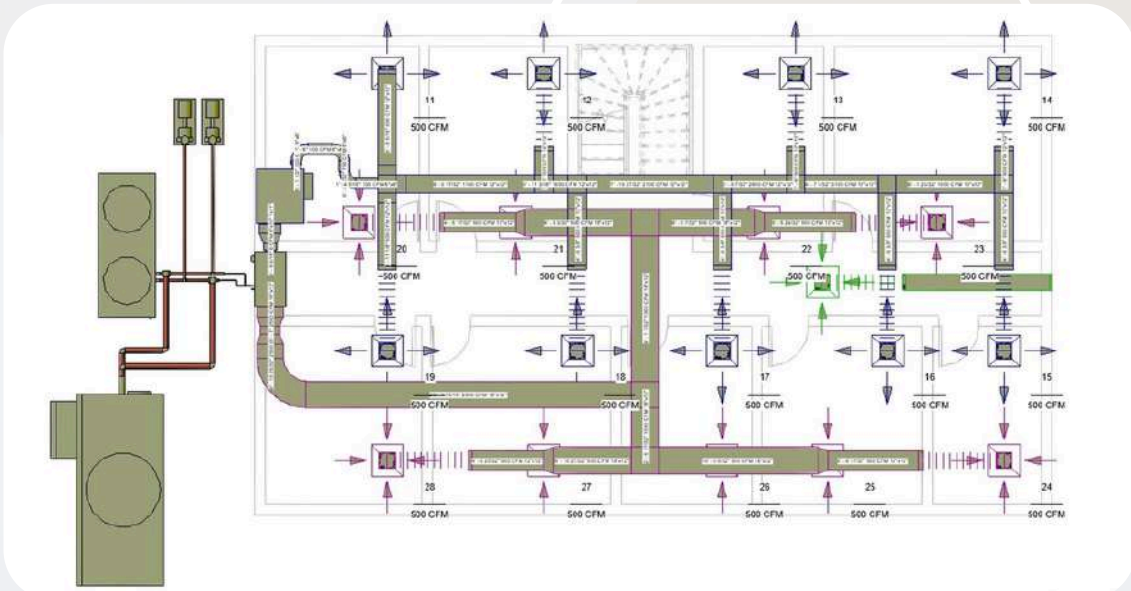


### CIRCUIT DIAGRAM

### CONTROL PANEL



### HVAC - COLLING TOWERS & CHILLERS





SINCE 2007

(Software Training & Placement Services)



**140** <sup>+</sup>  
COMPANIES



**175** <sup>+</sup>  
PLACED STUDENTS



- MECH. CAD • CIVIL CAD • BIM CAD • ELEC. CAD • ACCOUNTING • GRAPHICS • DIGITAL MARKETING

### SAMPLE ELECTRICAL PROJECTS OF OUR STUDENTS

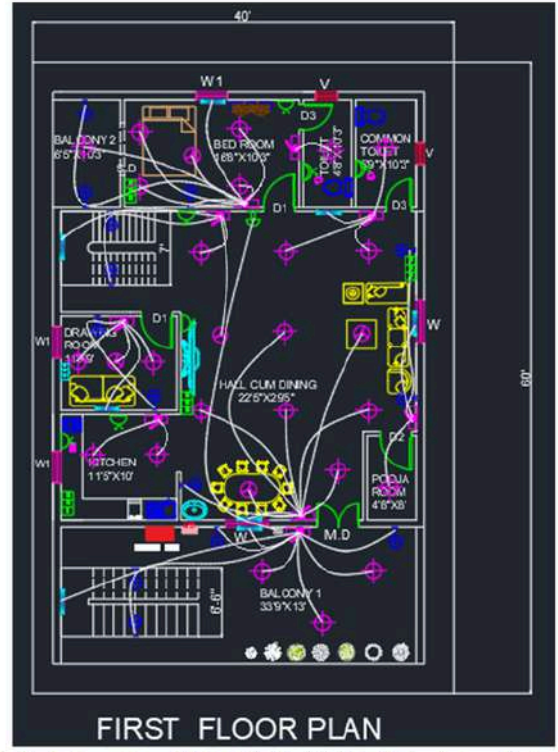
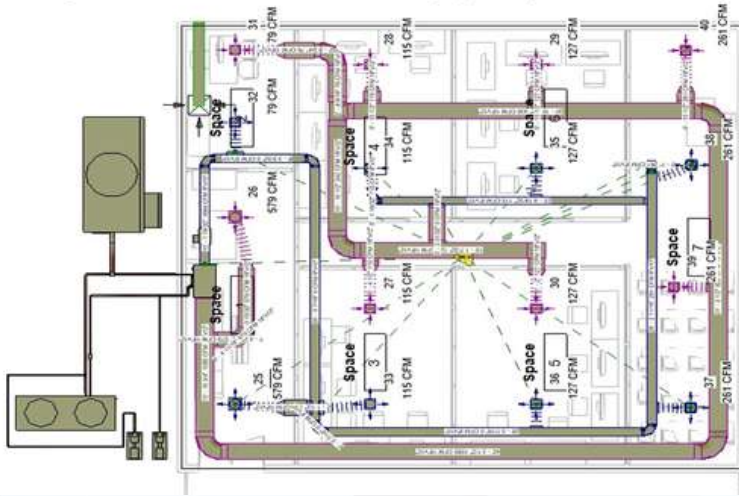
Created by: Annangi Charan

ID: 8419 / 154

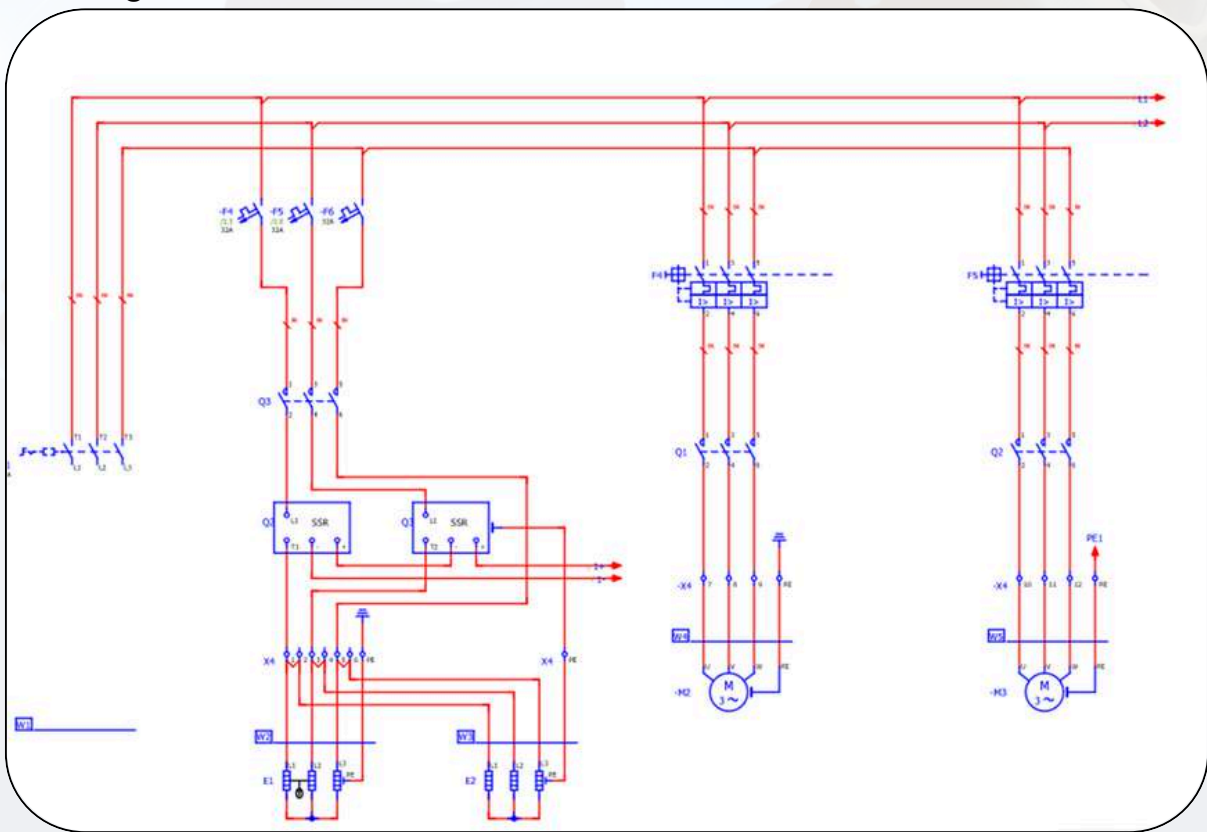
Various Electrification  
Drawings & HVAC lines



(Heating , Ventilation , Air Conditioning System)



Schematic Diagram in E-Plan





SINCE 2007

(Software Training & Placement Services)



**140** <sup>+</sup>  
 COMPANIES



**175** <sup>+</sup>  
 PLACED STUDENTS

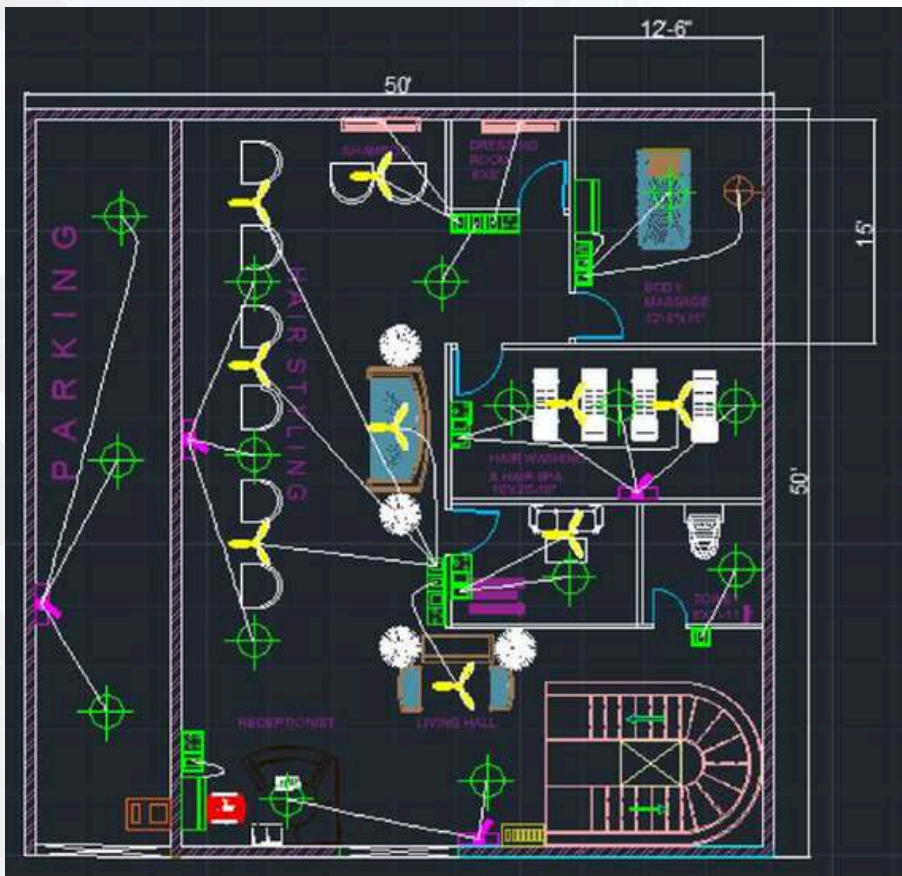


• MECH. CAD • CIVIL CAD • BIM CAD • ELEC. CAD • ACCOUNTING • GRAPHICS • DIGITAL MARKETING

**SAMPLE ELECTRICAL PROJECTS OF OUR STUDENTS**

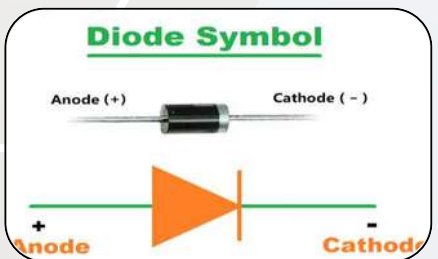
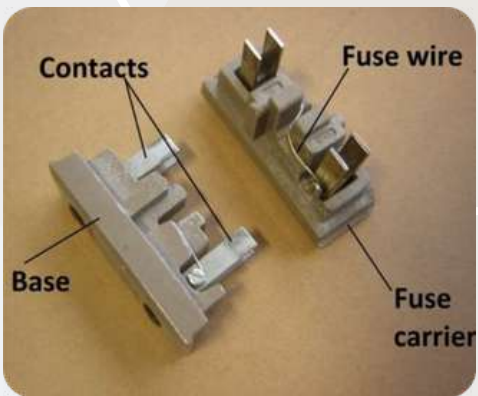
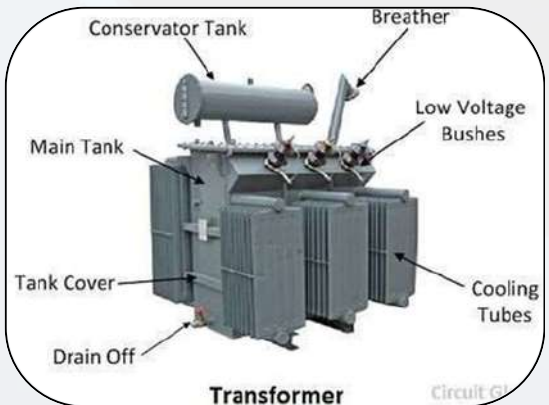
Created by: J Vamsi  
 ID: 8419 / 265

Various Electrification Drawings



PROJECT LIST		
NAME OF THE	QUANTITY	HEIGHT
SWITCH BOARD	Q	1.4
CEILING FAN	29	10
2 SWITCH AMD 1SOCKET 18A	3	1.4
2 SWITCH tJD1 SOCKET BA	8	
1 SWITCH AND 1 SOCKET 18 A	3	1.4
3SWITCH AND 1 SOCKET BA	6	1.4
AIR CONDITIONER	6	2.5
WALL LIGHT	3	4.5
TUBE UGH T		4.5
CEILING LIGHT	38	9
		1.7
METER BOX	1	1.7

**PPT OF VARIOUS ELECTRICAL ELEMENTS**



SINCE 2007

(Software Training & Placement Services)



**140** <sup>+</sup>  
COMPANIES



**175** <sup>+</sup>  
PLACED STUDENTS



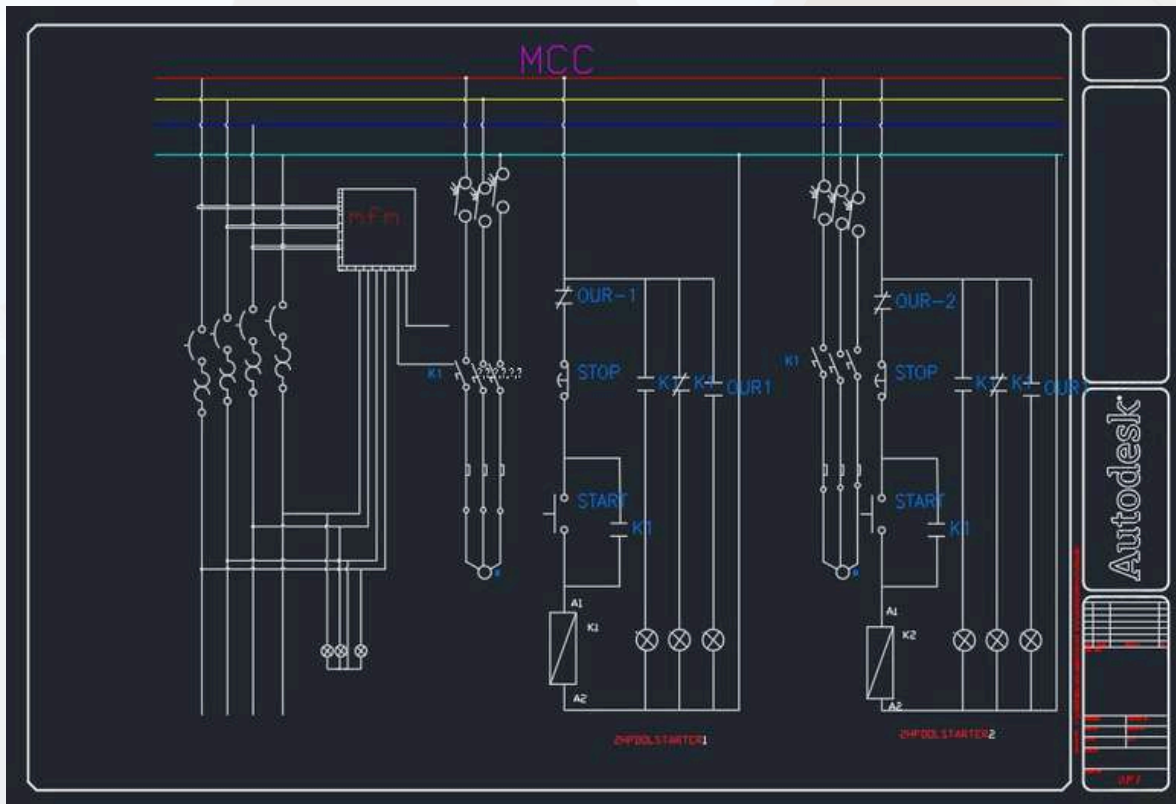
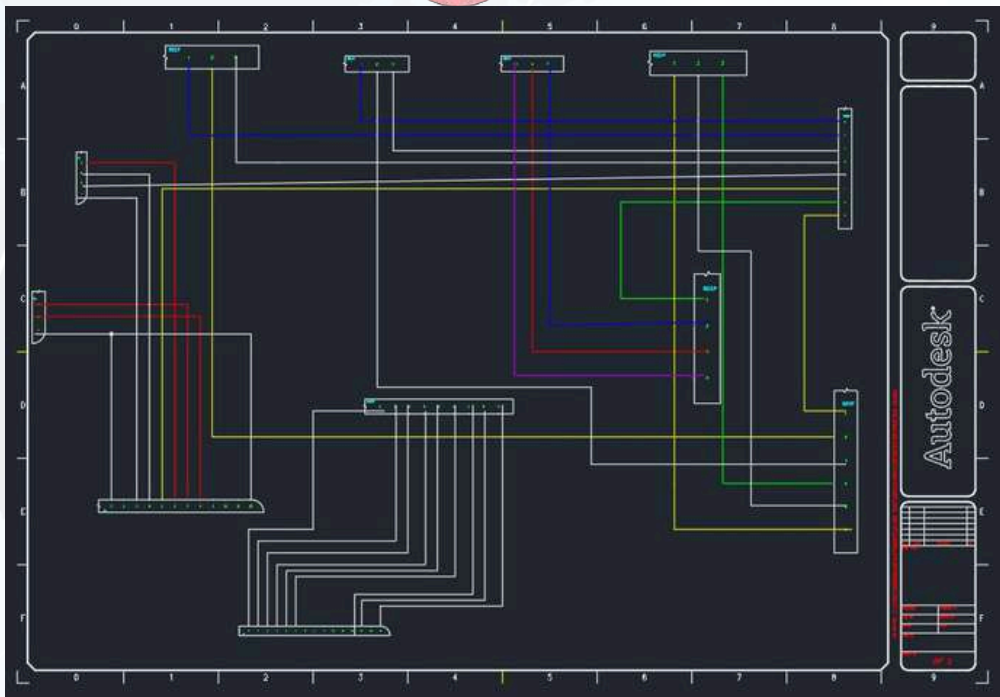
- MECH. CAD • CIVIL CAD • BIM CAD • ELEC. CAD • ACCOUNTING • GRAPHICS • DIGITAL MARKETING

## SAMPLE ELECTRICAL PROJECTS OF OUR STUDENTS

Created by: Shakthi k

ID: 8418 / 95

Various Electrification Drawings



SINCE 2007

(Software Training & Placement Services)



**140**  
COMPANIES



**175**  
PLACED STUDENTS

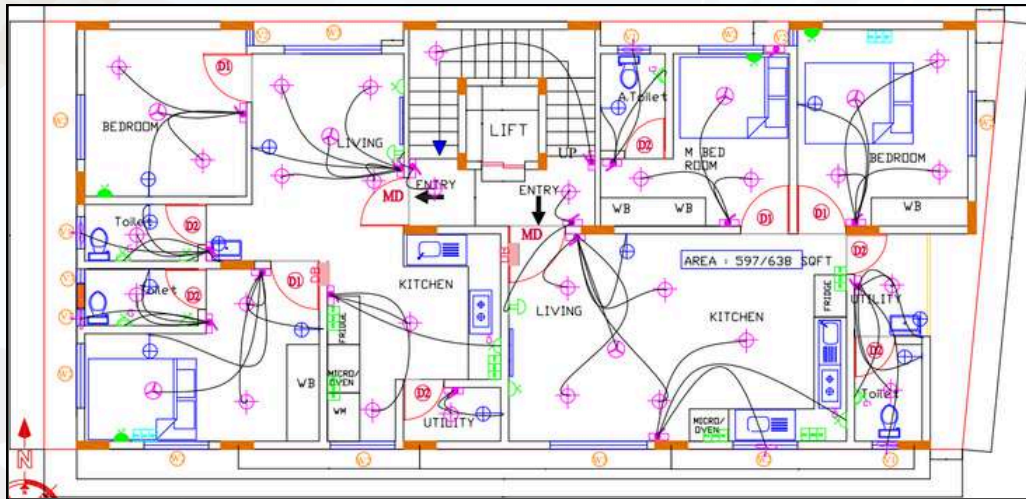


• MECH. CAD • CIVIL CAD • BIM CAD • ELEC. CAD • ACCOUNTING • GRAPHICS • DIGITAL MARKETING

**TECHNICALLY IMPORTANT THINGS FOR INTERVIEW & CAREER**

- Building Electrification
- Railway Electrification
- Load Calculation table
- Other Practical Drawings

**Understanding of Real time drawings on Building Electrification & Electrical Legend**



**ELECTRICAL LEGEND**

	SWITCH BOARD AT 1050 MM FROM FFL
	BELL PUSH BUTTON AT 1050 MM FROM FFL
	CEILING LIGHT
	WALL BRACKET LIGHT AT 2100 MM FROM FFL
	BELL AT 2400 FROM FFL
	2/3 PIN 6A SWITCHED SCCKET OUTLET AT 300 MM FROM FFL
	3 PIN 6/16A SWITCHED SCCKET OUTLET AT 300 MM FROM FFL
	3 PIN /616A SWITCHED SCCKET OUTLET AT 1800 MM FROM FFL GEYSER
	3 PIN 25A SWITCHED SCCKET OUTLET AT 300 MM FROM FFL GEYSER
	2/3 PIN 6A SWITCHED SCCKET OUTLET AT 300 MM FOR CHIMNEY
	EXHAUST FAN AS PER WINDOW DETAIL
	CEILING FAN
	TUPE LIGHT
	2 SWITH AND 1 SCCKET 6A
	1 SWITH AND 1 SCCKET 6A
	1 SWITCH AND 1 SCCKET 16 A

**Sample Load Calculation Table**

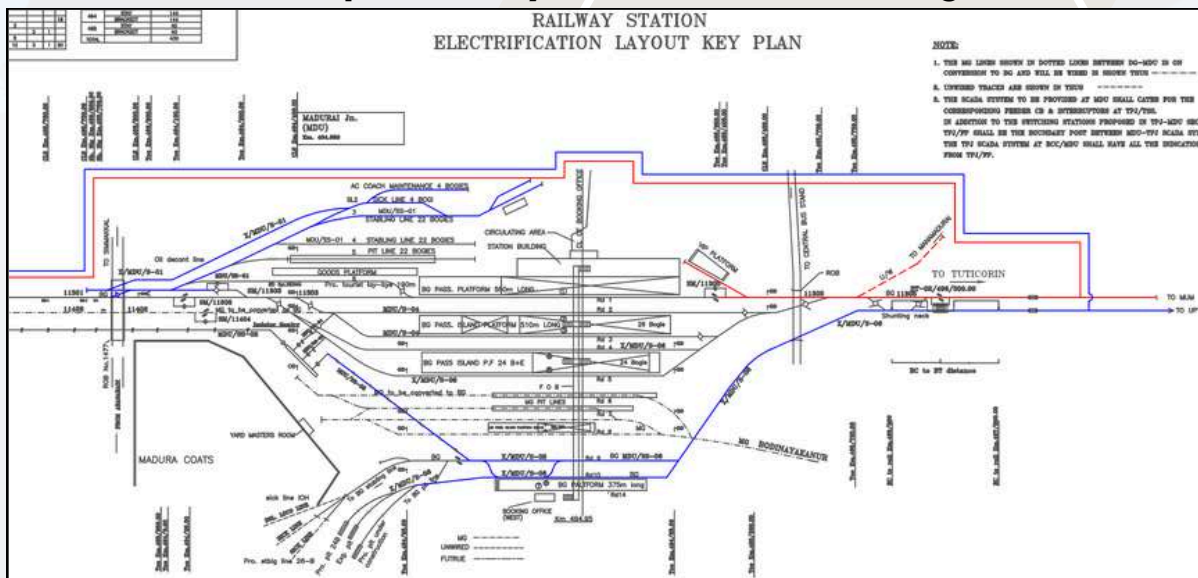
**LOAD CALCULATION TABLE- GROUND FLOOR**

S.NO	DEVICE DESCRIPTION	LOAD CAPACITY (w)	QTY	TOTAL LOAD REQUIRED(W)
1	CEILING LIGHT	20 WATT	22	440 W
2	SWITH BOARD AT 1050 MM FROM FFL		6	
3	WALL BRACKET LIGHT AT 2100 MM FROM FFL	15 WATT	8	120 W
4	2/3 PIN 6A SWITCH SCCKET OUTLET AT 300 MM FROM FFL		3	
5	3 PIN 6/16A SWITCH SCCKET OUTLET AT 300 MM FROM FFL			
6	3 PIN 6/16A SWITCH SCCKET OUTLET AT 1800 MM FROM FFL GEYSER	2000W	1	2000 W
7	2/3 PIN 6A SWITCH SCCKET OUTLET FOR CHIMNEY	6 (A)	1	
8	EXHAUST FAN AS PER FOR DETAIL	50 W	2	100 W
9	CEILING FAN	60/70W	3	
10	2 SWITCH AND 1 SCCKET 5A	5(A)	3	
11	1 SWITCH 1 SCCKET 5 A	5(A)		
12	1 SWITCH 1 SCCKET 15 A	15(A)	2	
13	WELCOME LIGHT			
14	BELL AT 2400 MM FROM FFL			
15	3 PIN 6/16A SWITCH SCCKET OUTLET AT 1800 MM FROM FFL AC	200 W	2	200 W

**LOAD CALCULATION TABLE FIRST & SECOND FLOOR**

S.NO	DEVICE DESCRIPTION	LOAD CAPACITY (w)	QTY	TOTAL LOAD REQUIRED(W)
1	CEILING LIGHT	20 WATT	32	640 W
2	SWITH BOARD AT 1050 MM FROM FFL		16	
3	WALL BRACKET LIGHT AT 2100 MM FROM FFL	15 WATT	11	165 W
4	2/3 PIN 6A SWITCH SCCKET OUTLET AT 300 MM FROM FFL		3	
5	3 PIN 6/16A SWITCH SCCKET OUTLET AT 300 MM FROM FFL			
6	3 PIN 6/16A SWITCH SCCKET OUTLET AT 1800 MM FROM FFL GEYSER	2000W	4	8000 W
7	2/3 PIN 6A SWITCH SCCKET OUTLET FOR CHIMNEY	6 (A)	2	
8	EXHAUST FAN AS PER FOR DETAIL	50 W	5	250 W
9	CEILING FAN	60/70W	6	420 W
10	2 SWITCH AND 1 SCCKET 5A	5(A)		
11	1 SWITCH 1 SCCKET 5 A	5(A)	2	
12	1 SWITCH 1 SCCKET 15 A	15(A)	6	
13	WELCOME LIGHT			
14	BELL AT 2400 MM FROM FFL		2	
15	3 PIN 6/16A SWITCH SCCKET OUTLET AT 1800 MM FROM FFL AC	200 W	4	800 W

**Sample Railway Electrification Drawings**







**(Software Training & Placement Services)**

**140<sup>+</sup>**  
COMPANIES



**175<sup>+</sup>**  
PLACED STUDENTS



• MECH. CAD • CIVIL CAD • BIM CAD • ELEC. CAD • ACCOUNTING • GRAPHICS • DIGITAL MARKETING

**PROFESSIONAL ELECTRICAL CAD  
PLACEMENT COURSES FEE STRUCTURE**

SL.No.	2 Course Program	*3 Course Program
1	AutoCAD Electrical	AutoCAD Electrical
2	Revit MEP	Revit MEP
3	-	E-Plan
Actual Course Fee	33,000/-Rs	51,000/-Rs
Final Course Fee (2 EMI)	30,000/-Rs	42,000/-Rs
Final Course Fee (1 EMI)	27,000/-Rs	38,000/-Rs

**Note:**

- All the above discounts are applicable for the Offline Students, Passout after 2022
- There will be no change in the course program structure once receipt is generated.
- All the course programs are included with books, related Technical Sessions, Skill sessions etc.
- General referral rewards only will be given for the course programs bordered in Blue lines.
- Students who are Interested to join in our Training and Placement unit from other districts and states will have add on discoun of 2500/-Rs (Two thousand Rupees).



SINCE 2007

(Software Training & Placement Services)



**140<sup>+</sup>**  
COMPANIES



**175<sup>+</sup>**  
PLACED STUDENTS



• MECH. CAD • CIVIL CAD • BIM CAD • ELEC. CAD • ACCOUNTING • GRAPHICS • DIGITAL MARKETING

**OUR PLACEMENT PARTNERS**



**MICRON ELECTRICALS**



**3D CONCEPT**



**IVORY SENSE**



**UNIT ALPHA**



**ELEMENT INFOMATICS**



**EMATRIX ENGG. LTD**



**PASOLITE**



**SOLID SYSTEMS**



**CONCEPT ENGINEERING**



**ROYAL LINKS**



**ENERGYAN LTD**



**CALIBER PVT. LTD**



**BAJAJ CAPITAL**



**VERVEE COURTURE**



**ENCLAVAR BUILDERS**



**ADARSH CONTROL**



**SHATHI FACADE'S**



**VARSHINORA DESIGN**



**AESTHETIX SPACES**



**140<sup>+</sup>**  
COMPANIES



**175<sup>+</sup>**  
PLACED STUDENTS



• MECH. CAD • CIVIL CAD • BIM CAD • ELEC. CAD • ACCOUNTING • GRAPHICS • DIGITAL MARKETING

### OUR PLACEMENT PARTNERS



ARCADIS



XNG AUTOMATION



NAUVATA ENGINEERING



FOCAL SYSTEMS



NEW FIELD ENGINEERING



BHILWARA INFOTECHNOLOGY LTD

BHILWARA INFOTECHNOLOGY



PINNACLE



STEEL KRAFT



ELEGANZ INTERIORS



MORPHLE LABS



CREATIVE TECHNOLOGY



SMART QUICK VENTURES



SANCTUM TECHNOLOGIES



GENESIS IT INNOVATIONS



CEA ENGG. AUTOMATION



STAR SWITCH GEARS



QUAD GEN



OLA ELECTRIC



SOBHA LIMITED

**FOR MORE DETAILS ABOUT OUR PLACEMENT PARTNERS - PLEASE VISIT THE BELOW WEBSITE LINK** <https://cadenggr.com/placement-services>

SINCE 2007

(Software Training & Placement Services)



**140<sup>+</sup>**  
COMPANIES



**175<sup>+</sup>**  
PLACED STUDENTS



• MECH. CAD • CIVIL CAD • BIM CAD • ELEC. CAD • ACCOUNTING • GRAPHICS • DIGITAL MARKETING



Mr. Prasanna H.G.



Mr. Soumya Bhattacharya



Mr. PruthviRaj Singh K



Ms. Ruksana Banu



Mrs. Chaitra



Ms. Nikita Kumari Sah



Mrs. Sushmitha H M



Ms. Sneha Lakshmi CR

**CONGRATULATIONS TO OUR PLACED STUDENTS**



Devaki A M



K Akhilesh



Sumangala



Deepak M K



Prabhatika



A Meghana



Yuvraj N



Girish Kumar



Bheemanna



M Faras k P



Chidvilasya



Niranjana D



Prakash Das



Y Hemanth



Aromal SS



K Venu Gopal



B Dhinesh K



T Reshma



Mrunmay KS



Dhana Raj D



Krishna V



A Gaurav



G Preethika



Vigneash M



Padmapriya K



Yashik



A Charan



S Imtiaz Ali



Animesh M



Sujal C M



Vijay AS



Airish J



Manohar MN



Gowripriya



C Sandhya



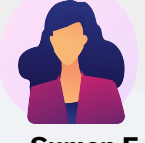
P Pavani



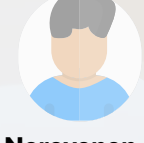
Ramanunni



D Saleem



Suman F



Narayanan



Adi Krishna C



Vaishnavi G



Mr. Uday Bhaskar Varada  
Mrs. Priyanka Bhaskar Varada



Munirathinam



Sambharam



Kiran D Patil



Niharika.B

**Placement Partner**

**BHASKARS ENGINEERING DESIGN & IT CENTER**

<https://cadenggr.com/placement-services>

+91 - 80500 91122 80500 41122

SINCE 2007

(Software Training & Placement Services)



**140<sup>+</sup>**  
COMPANIES



**175<sup>+</sup>**  
PLACED STUDENTS



• MECH. CAD • CIVIL CAD • BIM CAD • ELEC. CAD • ACCOUNTING • GRAPHICS • DIGITAL MARKETING

## CONGRATULATIONS TO OUR PLACED STUDENTS



N Syedbasha



Vaishnavi



A Rahman



B Mohan



Amit Kumar



Venu Madhav



N Yogendra



VSai Venkat



Jeevitha



R Sateesh



P Firoz Khan



S Gowdhaman



D Ayisha



Girish C T



Ankitha G N



Neha K R



N Sai Sumathil



Deepak R



Niranjana R



Supreet K



Syed Saqib



Nagaraj R



Ganesh



M Charitha



K Pavan



Y G Sudhakar



P Vasantha



Tashvin



Pawan N S



Arun



Ayush



Vamsi J



Ravi Teja



Rohitha



Shahaji



Shuklodhana



Lokesh KA



Sai Chandana



RaviTeja



B Chandrasekhar



Monika S



Chandrasekhar



Y Thanuja



T Lokesh



Deepthi



R Sreeja



D Yugandhar



Manoj DN



Aishwarya N



VaniSree B



T Amarnath



BS Karthik



Asifulla Khan



Chandrashekar



Anil K



Krishnavasu



Shakthi K



Satish



Theja



Peter Joh



Adarsh G



M Alfaz



Vinay R



Megha D

**Placement Partner**

**BHASKARS ENGINEERING DESIGN & IT CENTER**

<https://cadenggr.com/placement-services>

+91 - 80500 91122 80500 41122



SINCE 2007

(Software Training & Placement Services)



**140<sup>+</sup>**  
COMPANIES



**175<sup>+</sup>**  
PLACED STUDENTS



• MECH. CAD • CIVIL CAD • BIM CAD • ELEC. CAD • ACCOUNTING • GRAPHICS • DIGITAL MARKETING

## CONGRATULATIONS TO OUR PLACED STUDENTS



Vidya R



Pallavi B



P Mounika



Swathi R S



Manoj N S S



Suresh Babu



A Rekha



Elbin Jose



P Maneesha



Sandeep C



Abhishek K



B Mounika



Kavya R



R Azhar Ali



Thejasy



N Lokesh



H Vichitra



M Vinay



CR Pramoda



Vineeth N



Sivasankar



Dayanand



Venkat



M Gautham



B G Sunil



Abinraj



Pavan

## Received Offers



Bhagyashree



Sharan B



Nitheesh N



Aasiya T



Tharun



Aasif khan



Dayananda G



M Hasheem



Vidya N



S Jaheer



Bhagyashree



Mausumi P



M Shireen



Rafi SM

FOR MORE DETAILS ABOUT OUR PLACED STUDENTS - PLEASE VISIT THE BELOW WEBSITE LINK <https://cadenggr.com/placement-services>

**Placement Partner**

**BHASKARS ENGINEERING DESIGN & IT CENTER**

<https://cadenggr.com/placement-services>

+91 - 80500 91122 80500 41122



SINCE 2007

(Software Training & Placement Services)



**140** +  
COMPANIES



**175** +  
PLACED STUDENTS



- MECH. CAD • CIVIL CAD • BIM CAD • ELEC. CAD • ACCOUNTING • GRAPHICS • DIGITAL MARKETING

**GLIMPSE OF OUR PLACEMENT THUMB SIGN RULE - OUR SIGNATURE PIC**

When student gets Job Opportunity from our centre, to share our happiness we pose a Thumb sign as a symbol of success





**140** +  
COMPANIES



**175** +  
PLACED STUDENTS



• MECH. CAD • CIVIL CAD • BIM CAD • ELEC. CAD • ACCOUNTING • GRAPHICS • DIGITAL MARKETING

**GLIMPSE OF OUR SESSIONS**

**Resume preparation Sessions:**



**Students Examination:**



**Technical Sessions:**





(Software Training & Placement Services)



**140** <sup>+</sup>  
COMPANIES



**175** <sup>+</sup>  
PLACED STUDENTS



• MECH. CAD • CIVIL CAD • BIM CAD • ELEC. CAD • ACCOUNTING • GRAPHICS • DIGITAL MARKETING

**GLIMPSE OF OUR SESSIONS**



**Placement Partner**

**BHASKARS ENGINEERING DESIGN & IT CENTER**

<https://cadenggr.com/placement-services>

+91 - 80500 91122 80500 41122



SINCE 2007

(Software Training & Placement Services)



**140<sup>+</sup>**  
 COMPANIES



**175<sup>+</sup>**  
 PLACED STUDENTS



• MECH. CAD • CIVIL CAD • BIM CAD • ELEC. CAD • ACCOUNTING • GRAPHICS • DIGITAL MARKETING

**GUEST VISIT TO OUR CENTER**



**BEST EMPLOYER RECRUITMENT AWARD**  
 (Sep, 2024 – Aug, 2025)  
 for outstanding recruitment support

Sobha limited has recruited 7 resources in a short while

1. Vamsi J (8419/265) -
2. Shakthi (8418 / 95) -
3. Airish Jonas (8419/232) -
4. Vinay R (8419/266) -
5. BS Karthik (8418/120) -
6. G Venkata Raviteja (8419/306) -
7. D Yugandhar (8419/307) -



**BEST EMPLOYER RECRUITMENT AWARD**  
 (Sep, 2023 – Aug, 2024)  
 for outstanding recruitment support

TICS Engineering has recruited 7 resources with in 8 months, Interviewed most no. of students and supported us with Ontime communication.

1. Girish C T (8419/174)
2. Annangi Charan(8419 / 154)
3. N Lokesh (8419 / 142)
4. Sandeep Chandran (8419 / 125)
5. Elbin Jose (8419 / 112)
6. Girish Kumar(8419 / 92)
7. Yuvraj N (8419 / 86)





**140** <sup>+</sup>  
COMPANIES



**175** <sup>+</sup>  
PLACED STUDENTS



• MECH. CAD • CIVIL CAD • BIM CAD • ELEC. CAD • ACCOUNTING • GRAPHICS • DIGITAL MARKETING

### GLIMPSE OF OUR SOCIAL SERVICE EVENTS

Initiated Blood Doantaion Campaign on reaching our 1<sup>st</sup> Mile Stone  
100<sup>th</sup> Placement in our Centre



**DONATE BLOOD** +



**Placement Partner**

**BHASKARS ENGINEERING DESIGN & IT CENTER**

<https://cadenggr.com/placement-services>

+91 - 80500 91122 80500 41122

SINCE 2007

(Software Training & Placement Services)



**140<sup>+</sup>**  
COMPANIES



**175<sup>+</sup>**  
PLACED STUDENTS



• MECH. CAD • CIVIL CAD • BIM CAD • ELEC. CAD • ACCOUNTING • GRAPHICS • DIGITAL MARKETING

**GLIMPSE OF AWARDS, EVENTS & CELEBRATIONS**





SINCE 2007

(Software Training & Placement Services)



**140** <sup>+</sup>  
COMPANIES



**175** <sup>+</sup>  
PLACED STUDENTS



• MECH. CAD • CIVIL CAD • BIM CAD • ELEC. CAD • ACCOUNTING • GRAPHICS • DIGITAL MARKETING

**GLIMPSE OF AWARDS, EVENTS & CELEBRATIONS**



**Placement Partner**

**BHASKARS ENGINEERING DESIGN & IT CENTER**

<https://cadenggr.com/placement-services>



(Software Training & Placement Services)



**140<sup>+</sup>**  
COMPANIES



**175<sup>+</sup>**  
PLACED STUDENTS



• MECH. CAD • CIVIL CAD • BIM CAD • ELEC. CAD • ACCOUNTING • GRAPHICS • DIGITAL MARKETING

## BEST QUALITY TRAINING

In the all India CADDESK Software Training Summit held in March 2025, Caddesk Bommanhalli is Awarded as the “Best Quality Training Institute” & “Best Marketing Parctice centre”



### Placement Partner

**BHASKARS ENGINEERING DESIGN & IT CENTER**

<https://cadenggr.com/placement-services>



SINCE 2007

(Software Training & Placement Services)



**140**  
COMPANIES



**175**  
PLACED STUDENTS



• MECH. CAD • CIVIL CAD • BIM CAD • ELEC. CAD • ACCOUNTING • GRAPHICS • DIGITAL MARKETING

**PLACEMENT CATEGORY COURSE PROGRAMS & FEE STRUCTURE**



**TRAINING & PLACEMENT UNIT**  
**PLACEMENT GUARANTEED COURSE PROGRAMS & FEE STRUCTURE**

**Master CAD BIM (5 / 6 / 7 / 8 Course Programs)**

SL.No.	5 Course Program	6 Course Program	7 Course Program	8 Course Program
1	AutoCAD	AutoCAD	AutoCAD	AutoCAD
2	Sketch up	Sketch up	Sketch up	Sketch up
3	V-Ray	Enscape	Enscape	Enscape
4	Revit Arch.	Revit Arch.	Revit Arch.	Revit Arch.
5	Revit MEP	Revit MEP	Revit MEP	Revit MEP
6	-	Revit Structure	Revit Structure	Revit Structure
7	-	-	Navis Works	Navis works
8	-	-	-	Quantity take off
Actual Course Fee	65,000/-Rs	81,000/-Rs	99,000/-Rs	1,07,000/-Rs
Final Course Fee (2 EMI)	47,000/-Rs	53,000/-Rs	64,000/-Rs	71,000/-Rs
Final Course Fee (1 EMI)	42,000/-Rs	49,000/-Rs	58,000/-Rs	65,000/-Rs

**Master CAD Civil/Arch./Interior (4 / 6 Course Programs)**

SL.No.	4 Course Program	6 Course Program
1	AutoCAD	AutoCAD
2	Sketch Up	Sketch up
3	V-Ray / Enscape	Enscape
4	Revit Arch.	Revit Arch.
5	-	3ds Max
6	-	3ds Max-V-Ray
Actual Course Fee	48,000/-Rs	71,000/-Rs
Final Course Fee (2 EMI)	38,000/-Rs	51,000/-Rs
Final Course Fee (1 EMI)	35,000/-Rs	47,000/-Rs

**Master CAD Mechanical (4 / 5 / 6 / 7 Course Programs)**

SL.No.	4 Course Program	5 Course Program	6 Course Program	7 Course Program
1	AutoCAD	AutoCAD	AutoCAD	AutoCAD
2	Solidworks	Solidworks	Solidworks	Solidworks
3	Cre-O	Cre-O	Catia	Catia
4	Gd & T	Nx-CAD	Nx-CAD	Nx-CAD
5	-	Cre-O	Cre-O	Cre-O
6	-	Gd & T	Gd & T	Gd & T
7	-	-	Ansys WB	Ansys WB
Actual Course Fee	50,000/-Rs	65,000/-Rs	80,000/-Rs	1,00,000/-Rs
Final Course Fee (2 EMI)	38,000/-Rs	45,000/-Rs	51,000/-Rs	65,000/-Rs
Final Course Fee (1 EMI)	35,000/-Rs	42,000/-Rs	47,000/-Rs	61,000/-Rs

**Full Stack Courses (Only Training)**

SL.No.	Python Full Stack	Java Full Stack
1	Python	Java
2	Django	Adv. Java
3	HTML	HTML
4	CSS	CSS
5	Java Script	Java Script
6	My Sql	My Sql
Actual Course Fee	54,000/-Rs	49,000/-Rs
Final Course Fee (2 EMI)	45,000/-Rs	45,000/-Rs
Final Course Fee (1 EMI)	42,000/-Rs	42,000/-Rs

**Adv. Diploma in Digital Marketing**

SL.No.	3 Course Program
1	Digital Marketing
2	Photoshop
3	Illustrator
Actual Course Fee	54,000/-Rs
Final Course Fee (2 EMI)	46,000/-Rs
Final Course Fee (1 EMI)	43,000/-Rs

**Adv. Diploma & Basic Diploma Accounting (2 / 3 / 4 Course Programs)**

SL.No.	2 Course Program (Basic)	3 Course Program (Basic)	3 Course Program (Adv.)	4 Course Program (Adv.)
1	Ms Office	Ms Office	Tally Prime	Ms Office
2	Adv. Excel	Adv. Excel	Adv. Excel	Adv. Excel
3	-	Tally Prime	SAP Fico	Tally Prime
4	-	-	SAP Fico	SAP Fico
Actual Course Fee	20,000/-Rs	33,000/-Rs	51,000/-Rs	61,000/-Rs
Final Course Fee (2 EMI)	19,000/-Rs	30,000/-Rs	42,000/-Rs + Server Fee	48,000/-Rs + Server Fee
Final Course Fee (1 EMI)	18,000/-Rs	27,000/-Rs	39,500/-Rs + Server Fee	44,000/-Rs + Server Fee Exc.

**Prof. Electrical CAD (2 / 3 Course Programs)**

SL.No.	2 Course Program	3 Course Program
1	AutoCAD Electrical	AutoCAD Electrical
2	Revit MEP	Revit MEP
3	-	E-Plan
Actual Course Fee	33,000/-Rs	51,000/-Rs
Final Course Fee (2 EMI)	30,000/-Rs	42,000/-Rs
Final Course Fee (1 EMI)	27,000/-Rs	38,000/-Rs

**Note:**

- All the above discounts are applicable for the Offline Students, Passout after 2022
- There will be no change in the course program structure once receipt is generated.
- No placement guaranty for the course program bordered in Red lines
- General referral rewards only will be given for the course programs bordered in Blue lines.
- All the course programs are included with books, related Technical Sessions, Skill sessions etc.

Click the web link for Placement Category Courses / Rotate and See the details here

<https://caddeskbangalore-bommanhalli.com/software-discount>





SINCE 2007

(Software Training & Placement Services)



**140<sup>+</sup>**  
 COMPANIES



**175<sup>+</sup>**  
 PLACED STUDENTS



• MECH. CAD • CIVIL CAD • BIM CAD • ELEC. CAD • ACCOUNTING • GRAPHICS • DIGITAL MARKETING

**CERTIFICATION**

At CADDESK/ITDESK Bommanhalli & Madiwala, we strive to provide the highest quality Software training to individuals seeking to improve their skills in the field. Our mission is to ensure that our students receive the Software Education and Knowledge necessary to succeed in their Career with good Job Opportunity. Category of Certification (Sample certificates below):

1. Single Software Certification - CAD/IT Certification
2. Two Software Certification - Diploma CAD/IT Certification
3. Three Software Certification - Professional/Advance Diploma CAD/IT Certification
4. Four+ Software Certification - Master Diploma in CAD/IT Certification - (Highest Cer





**140**<sup>+</sup>  
COMPANIES



**175**<sup>+</sup>  
PLACED STUDENTS



• MECH. CAD • CIVIL CAD • BIM CAD • ELEC. CAD • ACCOUNTING • GRAPHICS • DIGITAL MARKETING

### JOIN & REFER OTHERS



Dear upcoming students / CADDESK/ITDESK Bommanhalli & Madiwala students - appreciate your trust in our Training and Placement process.

★ Join & Refer your friend to gain good Software Knowledge

★ Join & Refer your friend to Develop Skills

★ Join & Refer your friend to Grab Good Job Opportunity

★ Join & Refer your friend for a Bright Career

★ Join & Refer your friend for a better society





**140<sup>+</sup>**  
COMPANIES



**175<sup>+</sup>**  
PLACED STUDENTS



TOP LEVEL /  
CMMI LEVEL  
ORGANIZATIONS

• MECH. CAD • CIVIL CAD • BIM CAD • ELEC. CAD • ACCOUNTING • GRAPHICS • DIGITAL MARKETING

## IMPORTANT QUESTION & ANSWERS

### 1. What is the amount of Practice time needed to gain skill in the software?

A Student who is willing to start the career in Software field, He/She needs to Spend atleast 2-3 hours quality time in practicing the software. (Expecting He/She has basic subject knowledge)

### 2. Is it really necessary to practice every day?

Practice develops 3 major important characteristics  
- SPEED - PERFECTION & - ACCURACY

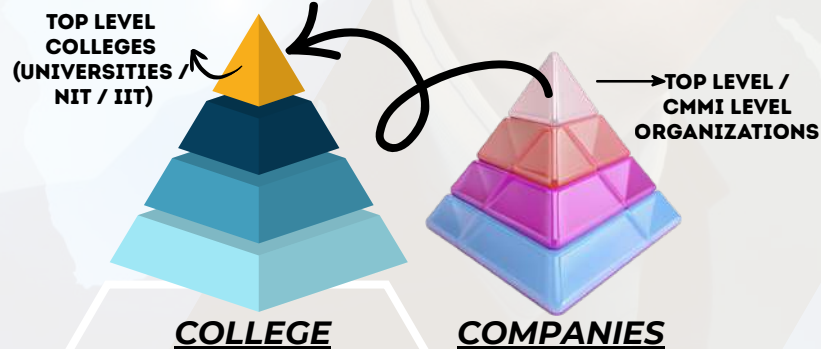
Having the Idea in software is basic, in reality when a CAD /IT student attend the Interview the main focus by Inteviewers is on the level Speed, Accuracy and Perfection.



### 3. Why does a student who come out from the college (Job less / No Campus Jobs) have tough situation outside? Why there is more competition for software Jobs?

Please understand the Hierarchy model of the Organizations & Colleges in the below link and answer for many questions related to Top level companies, Salary, Competition outside etc.

[https://youtu.be/X4cJEw\\_4wmo](https://youtu.be/X4cJEw_4wmo)



4. If the student is Good in Software only, wether he will get the right Job?

5. If the student is Good in Communication only, wether he will get the right Job?

6. If the student has 90% only in his academics, wether he will get the right Job?

7. Student has good skills but does not have perfect resume, wether he may get right Job?

8. What are the Expectation of the Organizations from the Job Seekers?

Click the link to see the Tour to Mechanical CAD Software class <https://youtu.be/IZB7UUn9aw0>

Click the link to see the Tour to Civil CAD Software class <https://youtu.be/6Ra29Gk3FIY>

Click the link to see Glimpse of English Class room session - <https://youtu.be/Wn9lIxsoQkM>

Click the link to see Glimpse of resume writing session <https://youtu.be/NqG1t7L73K8>

Click the link to see the Expectation of the Oranization from Job Seekers <https://youtu.be/RzyjMTCrheY>

**"OUR AIM OVER ALL SKILL DEVELOPMENT"**

Page 32



**140** +  
COMPANIES



**175** +  
PLACED STUDENTS



• MECH. CAD • CIVIL CAD • BIM CAD • ELEC. CAD • ACCOUNTING • GRAPHICS • DIGITAL MARKETING

## ORGANIZATION SELECTION CRITERIA



### **FINALLY THE ORGANIZATIONS LOOK FOR OVERALL SKILL IN THE RESOURCES**

In our training process we aim to develop Skills & Awareness  
"OVER ALL SKILL DEVELOPMENT"

**Communication skills + Software skills + Technical skills +  
Behavior + Awareness of (Presentation + Commitment +  
Responsibility & others)**





**140<sup>+</sup>**  
COMPANIES



**175<sup>+</sup>**  
PLACED STUDENTS



• MECH. CAD • CIVIL CAD • BIM CAD • ELEC. CAD • ACCOUNTING • GRAPHICS • DIGITAL MARKETING

## TIME FOR REGISTRATION

Dear aspirants / career seekers who are interested in the Software Training and Placement, Please find the 4 steps.

**Step 1: Feel free to contact us & clarify any query**

**Step 2: Please see the Domain (Civil/Mech/Elec/Accounting/Graphic etc.) related Brochure for Content, Student Projects, Course fee etc.**

**Step 3: With a nominal token registration fee Book your time and slot**

**Step 4: Now click the link here to register**



**TRAINING  
&  
PLACEMENTS**



<https://caddeskbangalore-bommanhalli.com/payments-%26-registration>

## CONTACT US

### Placement Partner

 **BHASKARS ENGINEERING DESIGN & IT CENTER**

 <https://cadenggr.com/placement-services>

### Training Website

 <https://caddeskbangalore-bommanhalli.com>

 **+91 - 80500 91122 80500 41122**