

# **NO.1 TRAINING & PLACEMENT UNIT**

**Bommanhalli & Madiwala - Bangalore**

AN ISO 9001:2015 CERTIFIED COMPANY<sup>®</sup>

# **CAD DESK**

## **ITDesk**

Where Success Begins

**SINCE 2007**



**IN FOR TRAINING , DEVELOP SKILLS & LEAVE WITH JOB**

## **WELCOME TO MECHANICAL CAD SOFTWARE TRAINING & PLACEMENTS**

- Overview of CADDESK / ITDESK - Page 2
- Master CAD Mechanical Courses - Page 3
- Content of the course Program - Pages 4 to 5
- Course Program Fee structure - Page 6
- Over view technical Important sessions - Page 7
- Projects created by our students - Pages 8 to 10
- Placement Partners - Pages 11 to 12
- Our powerful placement strategy - Page 13
- Glimpse of our sessions - Page 14
- Glimpse of our Placed Students - Page 15

**Managing Director**

Varada Uday Bhaskar  
ME Mechanical Engg. OU University  
16+ Years of Exp



**75<sup>+</sup>**  
**COMPANIES**



**Click website for Guaranteed Course Programs**

**[https://caddeskbangalore-](https://caddeskbangalore-bommanhalli.com/placement-category)**

**[bommanhalli.com/placement-category](https://caddeskbangalore-bommanhalli.com/placement-category)**



**Click our website for Placed students & Partners**

**<https://cadenggr.com/placement-services>**



**Initiative of  
Bhaskars Engineering Design & IT Center**

# NO.1 TRAINING & PLACEMENT UNIT

**Bommanhalli & Madiwala - Bangalore**

AN ISO 9001:2015 CERTIFIED COMPANY<sup>®</sup>  
**CAD DESK**  
**ITDesk**  
Where Success Begins  
SINCE 2007



**CADDESK/ITDESK established in year 2007 has 20+ years of experience in Software Training of CAD/CAE/CAM/Full Stack/IT Software's.**

**We teach wide variety of Software's for Engineering & Degree Students CIVIL/ARCH./INTERIOR/MECH./PRODUCTION/AUTOMOBILE/ELECTRICAL/PUC/DEGREE (B.com/BBA/BA/BSC/BCA/others)/PG/MASTERS**



## **CIVIL ENGINEERING SOFTWARES**

- Auto CAD
- 3DS Max
- REVIT Structure
- REVIT Architecture
- REVIT MEP
- STAAD Pro
- Etabs
- V-Ray
- Google Sketch up
- Enscape
- Quantity Take off
- and others.



## **MECH.ENGINEERING SOFTWARES**

- Auto CAD
- SolidWorks
- Catia
- NX Cad
- Nx Cam
- CREO
- Ansys WB
- REVIT MEP
- INVENTOR
- GD & T
- and others.



## **ELECTRICAL ENGG. SOFTWARES**

- Auto CAD
- PLC/Scada
- Matlab
- Primavera
- And others.



## **IT ENGINEERING SOFTWARES**

- MS Office
- Photoshop
- Corel Draw
- C language
- C++
- Core Java
- Advance Java
- Python
- Tally
- PHP
- .Net
- AWS
- SAP FICO/MM
- HTML
- JQuery
- My SQL
- Digital Marketing
- AI and others.

**kindly note all the software's are not under Placement Category. For more details on the Mechanical CAD Placement Category courses, Please refer Page no. 6**



# NO.1 TRAINING & PLACEMENT UNIT

Bommanhalli & Madiwala - Bangalore

AN ISO 9001:2015 CERTIFIED COMPANY<sup>®</sup>  
**CAD DESK**  
**ITDesk**  
Where Success Begins  
SINCE 2007



## MECHANICAL CAD COURSES

**AutoCAD 2d/3d:** AutoCAD, a computer-aided design (CAD) software, allows for both 2D and 3D mechanical design and drafting. 2D drafting in AutoCAD offers precise control over lines, shapes, dimensions, and annotation.

3D allows for creating solid, surface, and mesh models, providing a more realistic and comprehensive representation of mechanical parts.

**Solidworks:** SolidWorks is a computer-aided design (CAD) and computer-aided engineering (CAE) software used for creating 3D models of various products and processes, including parts, assemblies, and finished goods

**Catia :** CATIA is a powerful, versatile CAD (Computer-Aided Design) software used across various industries for 3D modeling, simulation, and design.

It's primarily used to create, modify, and analyze complex products and systems before they are physically produced, enabling designers and engineers to visualize and optimize designs. CATIA also supports advanced features like surface modeling & Complex assembly design

**Nx CAD:** NX CAD is also a powerful, comprehensive Computer-Aided Design (CAD) software developed by Siemens Digital Industries Software

It's widely used for product design, engineering, and manufacturing across various industries, including automotive, aerospace, and electronics. NX CAD offers a wide range of features for 3D modeling, drafting, and simulation.

**Gd & T:** Geometric Dimensioning and Tolerancing, is a standardized system of symbols and rules used in engineering drawings to define and communicate the geometric characteristics and permissible variations of a physical object. It helps designers and manufacturers communicate the degree of accuracy and precision.

# NO.1 TRAINING & PLACEMENT UNIT

**Bommanhalli & Madiwala - Bangalore**

AN ISO 9001:2015 CERTIFIED COMPANY<sup>®</sup>  
**CAD DESK**  
**ITDesk**  
Where Success Begins

**SINCE 2007**



## **CONTENT OF THE MASTER CAD MECH. COURSE PROGRAM**

### **AutoCAD 2d/3d:**

- AutoCAD Commands, Use of mouse and keyboard, File extensions, Limits (Li), Units (UN), selection, Views.
- 2d drafting: Drawing toolbar, Point (Po), Co-ordinate system, Line (L), Construction Line (XL), Polyline (PL), Ray, Point style.
- Circle (C), Ellipse (EL), Arc (A), Polygon (POL), Rectangle (Rec)
- Spline (SPL), Divide (Div), Measure (Mea), Donut (Do), Hatch (H), etc.
- Drafting Setting Tool bar
- Modifying tool bar
- Editing tool bar
- Annotations
- Styles manager
- Layer
- Properties
- Tool Palettes
- Parametric constraints
- Linking & Extraction
- Plotting
- 3d Modeling tools
- Solid editing tools

### **SOLIDWORKS**

- Student will be starting from the GUI features, Design tree, Feature manager, keyboard & mouse uses.
- Sketch Entities
- Sketch modifying tools
- Part modeling
- Extrude, Extrude cuts, Revolve & Revolve cut
- Sweep, Sweep cut, Loft & Loft cut, fillet & chamfer.
- Reference Geometry - Plane, Point, Axis
- Rib, Shell, Draft, Patterns
- Curves, composite curve, Project curves, Helix & spiral
- Wrap, dome, mirror
- Assembly modeling
- Coincident, parallel, perpendicular, tangent etc
- Smart mates
- Replace, rotate, move component
- Mechanical mates
- Advance mates
- Dimensioning - Horizontal, Vertical, chamfer dimension center mark, Centerline.
- Surface modeling
- Sheet metal design
- Drafting module

### **GD & T**

- Traditional Tolerance
- Angle's of Projections
- Cost of Drawing Error
- Methods of Dimensioning
- Understanding of Part, Production & Assembly drawings
- Concepts of Tolerance
- Representation of tol.
- Fits in Mechanical Assemblies
- Existence of GD & T
- Symbols of GD & T per ASME Y 14.5M
- Feature Control Frame
- Basic dimension & size
- Geometric Tol Zone.
- Feature of Size, Identifying feature of size
- Selection of datum
- 3-2-1 Principle
- Rules of Gd & T
- Material Modifiers
- Bonus Tolerance (shaft & hole)
- RFS Condition
- Virtual Condition
- Tolerance Grades ISO 286 -1: 2021
- General Tol zone.
- Fits in Mechanical assembly
- Hole & Shaft basis system
- Surface Finish Symbols





# NO.1 TRAINING & PLACEMENT UNIT

**Bommanhalli & Madiwala - Bangalore**

AN ISO 9001:2015 CERTIFIED COMPANY<sup>®</sup>  
**CAD DESK**  
**ITDesk**  
Where Success Begins  
**SINCE 2007**



## **CONTENT OF THE MASTER CAD MECH. COURSE PROGRAM**

### **CATIA**

- Catia is a higher end software used widely in Automotive, Aerospace, transportation & Marine.
- Sketcher profile - Lines, Circle, rectangle, spline, ellipse, geometrical & dimensional constraints.
- Operations: Corner, chamfer, trim, mirror. Constraints, Fix together, Edit multi constraint
- Sketch based features - Pad, Multi-pad, pocket, shaft, groove, hole, rib, slot, solid combine, multi section solid, remove multi section solid.
- View - Fly mode, fit all, Pan, rotate, zoom in/out, normal view, view manager, visual style
- Materials, Apply materials, Type of materials
- Reference elements
- Transformation features
- Boolean operations
- Assembly module
- Constraints
- Wireframe & Surface
- Generative sheet metal
- Annotations
- Drafting

### **NX-CAD**

- Basic Layout NX CAD and its uses
- Interface of NX CAD, Mouse function, Basic commands (Save, Open, Import, Export.)
- Sketch, Sketch environment, Sketch curve
- Design features (Extrude, Revolve, datum plane, datum axis, datum CSYS)
- Design features (Block, Cylinder, cone, sphere, hole, boss, pocket)
- Design features (Pad, Emboss, Slot, groove, rib, draft, etc.)
- Design feature (Trim body, split body, trim sheet, extend sheet, un-trim, divide face, delete edge, delete body)
- Assembly (Basics, add, create new, pattern, mirror)
- Assembly (move constraints, assembly constraints, Exploded Views)
- Assembly (connections drop down, exploded view)
- Sheet metal (Basic introduction, bend, flange, counter flange, hem flange, lofted flange, jog)
- Sheet metal (Corner basic, closed corner, three bend corner, break corner, chamfer etc.)
- Drafting (Introduction, View creation wizard, base view, update view, section view)
- Introduction to surfacing, Through curve, swept, face blend, aesthetic, face blend, bridge, blend corner, 4 point surface, fill surface.
- Extract geometry, offset surface, trim sheet, trim body, extend sheet etc.

# NO.1 TRAINING & PLACEMENT UNIT

Bommanhalli & Madiwala - Bangalore

AN ISO 9001:2015 CERTIFIED COMPANY<sup>®</sup>  
**CAD DESK**  
**ITDesk**  
Where Success Begins  
SINCE 2007



## MASTER CAD MECHANICAL - PLACEMENT COURSES FEE STRUCTURE

SL.No.	4 Course Program	5 Course Program	6 Course Program
1	AutoCAD	AutoCAD	AutoCAD
2	Solidworks	Solidworks	Solidworks
3	Catia	Catia	Catia
4	Gd & T	Nx-CAD	Nx-CAD
5	-	Gd & T	Cre-O
6	-	-	Gd & T
Actual Course Fee	42,500/-Rs	56,500/-Rs	69,500/-Rs
Final Course Fee (2 EMI)	31,500/-Rs + 2000/-Rs Books Fee	38,500/-Rs + 2500/-Rs Books Fee	46,500/-Rs + 3000/-Rs Books Fee
	1st EMI: 18,500/-Rs 2nd EMI: 13,000/-Rs Books Fee: 2000/-Rs	1st EMI: 22,500/-Rs 2nd EMI: 16,000/-Rs Books Fee: 2500/-Rs	1st EMI: 28,500/-Rs 2nd EMI: 18,000/-Rs Books Fee: 3000/-Rs
Final Course Fee (1 EMI)	30,500/-Rs + Books Included	36,500/-Rs + Books Included	44,500/-Rs + Books Included

**Note:** • All the above discounts are applicable for the Offline Students, Passout after 2022  
• There will be no change in the course program structure once receipt is generated  
• Incase of any career gap, arrears / backlog meet the management for guidance.



# NO.1 TRAINING & PLACEMENT UNIT

Bommanhalli & Madiwala - Bangalore

AN ISO 9001:2015 CERTIFIED COMPANY<sup>®</sup>  
**CAD DESK**  
**ITDesk**  
Where Success Begins  
SINCE 2007



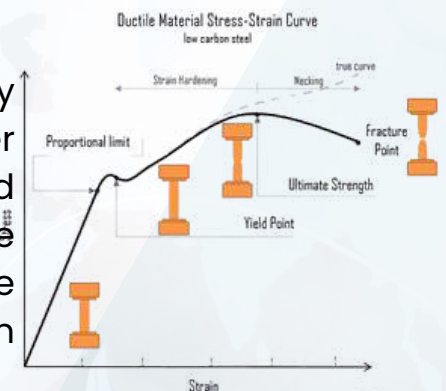
## TECHNICALLY IMPORTANT THINGS FOR INTERVIEW & CAREER

### • **Mechanical Properties & practical uses**

The mechanical properties are those which affect the mechanical strength and ability of a material to be molded in suitable shape. Mechanical properties may be determined to provide design data for the engineer. Mostly, the strength, toughness and hardness of materials are to be measured after the metal forming process. Student will be given a practical overview of the importance of mechanical properties of the materials.

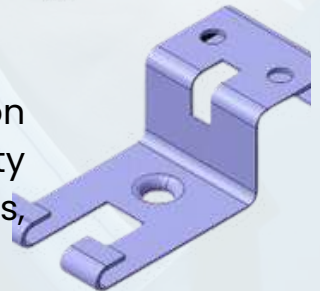
### • **Stress Strain graph of steel**

The significance of a stress-strain curve lies in its ability to characterize a material's mechanical behavior under load, providing insights into its strength, toughness, and other crucial properties. It visually represents the relationship between stress and strain. Student will be given a clear over-view from the basics on Stress - Strain Diagrams and its importance in Engg. applications.



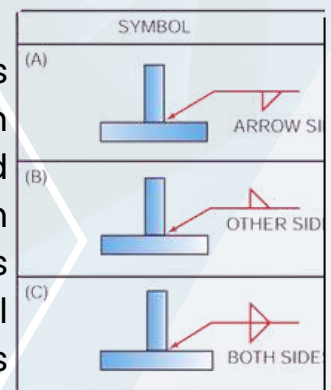
### • **Sheet metal design Considerations**

Sheet metal design requires careful consideration of fabrication processes and material properties to ensure manufacturability and optimal performance. Key considerations include bend radius, hole and slot dimensions, relief areas for bends, and thickness.



### • **Welding & Weld representation in drawings**

Welding is crucial in engineering for its ability to join metals permanently, creating strong and durable structures. It's used in various industries, including construction, automotive, and manufacturing, enabling the creation of everything from buildings and bridges to vehicles and appliances. Welding offers a cost-effective and efficient way to assemble complex metal structures. Students will be given the practical welding drawings for better understanding.



### • **Rivet & Fastening process**

Rivets are used as mechanical fasteners to permanently join two or more materials together. Rivets are commonly employed in industries like automotive, aerospace, construction, and manufacturing for tasks such as attaching body panels, joining structural members, and assembling various components.





# NO.1 TRAINING & PLACEMENT UNIT

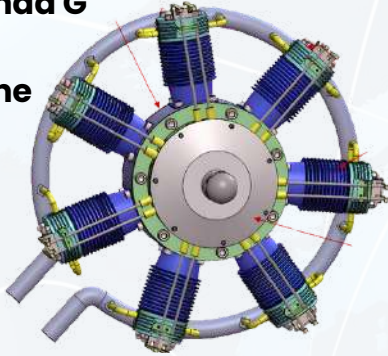
Bommanhalli & Madiwala - Bangalore

AN ISO 9001:2015 CERTIFIED COMPANY<sup>®</sup>  
**CAD DESK**  
**ITDesk**  
Where Success Begins  
SINCE 2007



## SAMPLE MODELING PROJECTS OF OUR STUDENTS

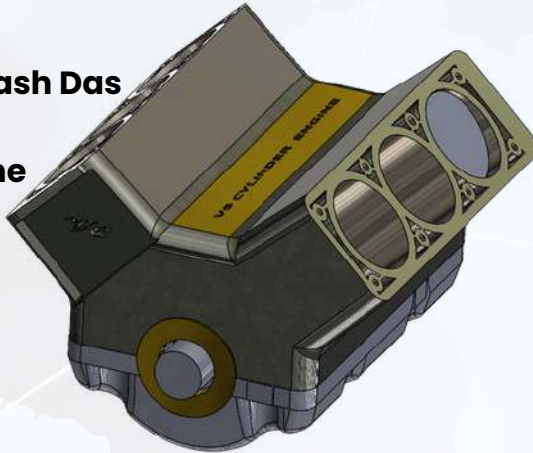
Created by: Dayananda G  
ID: 8419 / 103  
Radial Cylinder Engine



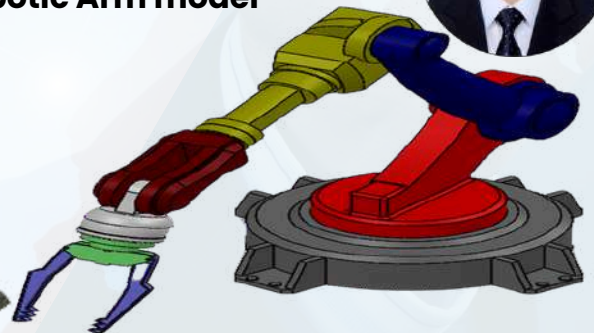
Created by: Munirathinam  
ID: 8419 / 75  
Wheel Axle Arrangement



Created by: Prakash Das  
ID: 8419 / 68  
V6 Cylinder Engine



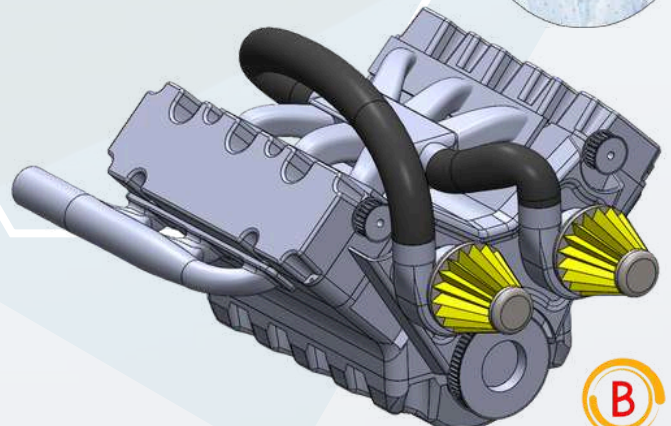
Created by: Raahil Azhar Ali  
ID: 8419 / 68  
Robotic Arm model



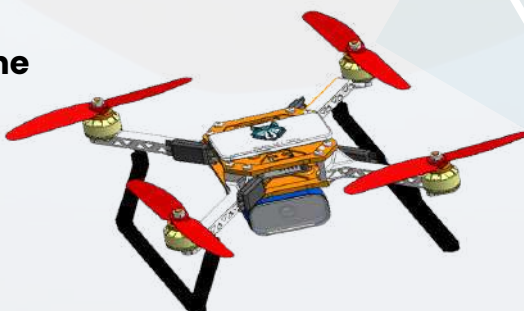
Created by: B Ganesh Madhav  
ID: 8419 / 59  
3d Model of Solar CAR



Created by: Sambhram D T  
ID: 8419 / 74  
V6 Cylinder Engine with  
Intake and Exhaust



Created by: Sujal  
ID: 8419 / 178  
3d Model of Drone





# NO.1 TRAINING & PLACEMENT UNIT

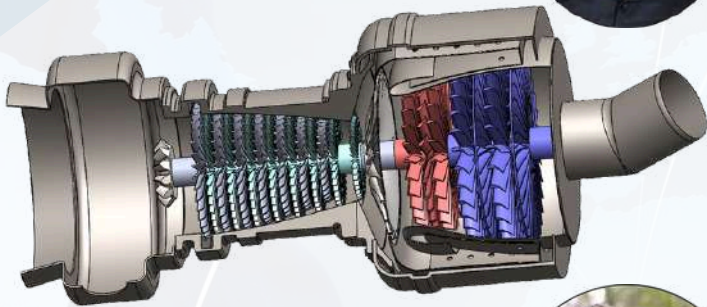
Bommanhalli & Madiwala - Bangalore

AN ISO 9001:2015 CERTIFIED COMPANY<sup>®</sup>  
**CAD DESK**  
**ITDesk**  
Where Success Begins  
SINCE 2007

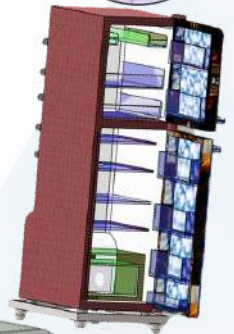


## SAMPLE MODELING PROJECTS OF OUR STUDENTS

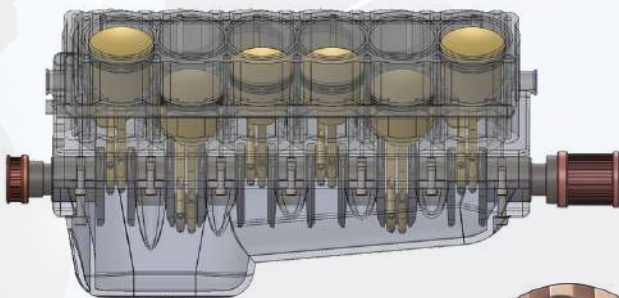
Created by: Tharun Kumar  
ID: 8419 / 107  
3d Model of Jet Engine



Created by: Girish CT  
ID: 8419 / 174  
Model of XUR CAR, Bi Cycle  
& Refirgator



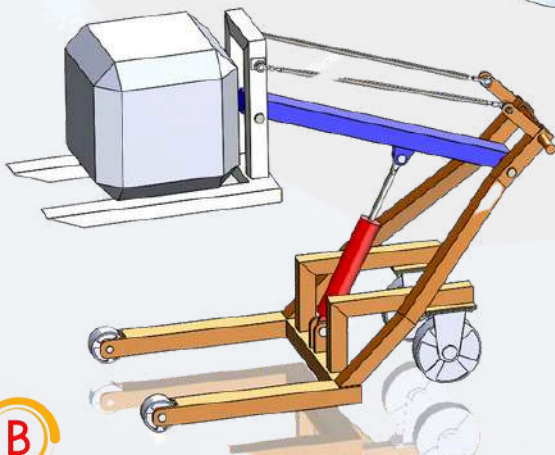
Created by: Vijay AS  
ID: 8418 / 38  
V12 Cylinder Engine



Created by: Syed Saqib  
ID: 8418 / 53  
3d Model of Fork lift



Created by: Prakash M  
ID: 8419 / 80  
Industrial Hand Lift



Created by: S Gowdhaman  
ID: 8419 / 127  
3d Model of Fighter Jet





# NO.1 TRAINING & PLACEMENT UNIT

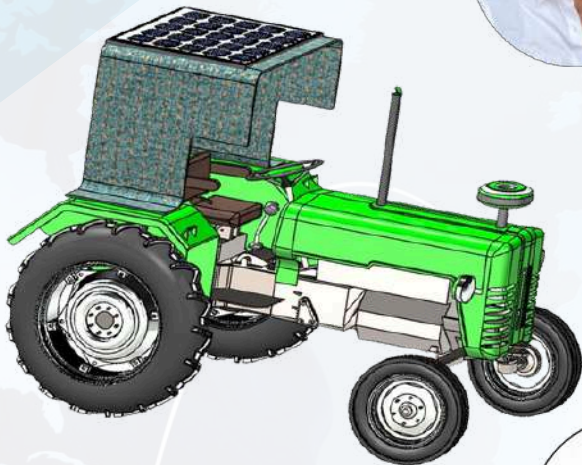
Bommanhalli & Madiwala - Bangalore

AN ISO 9001:2015 CERTIFIED COMPANY<sup>®</sup>  
**CAD DESK**  
**ITDesk**  
Where Success Begins  
SINCE 2007



## SAMPLE MODELING PROJECTS OF OUR STUDENTS

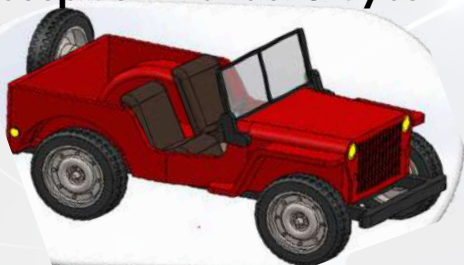
Created by: Gujjari Ravi Teja  
ID: 8419 / 157  
Model of Tractor



Created by: Pathan Firoz Khan  
ID: 8419 / 198  
3d Model of Air Bus A380



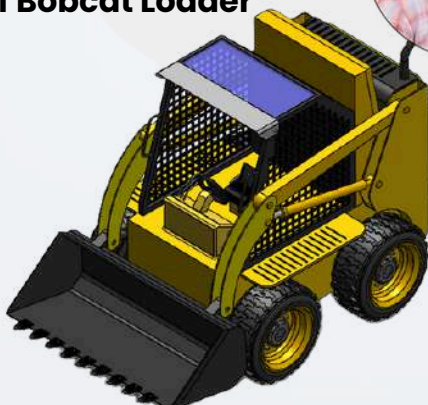
Created by: Niranjan Kumar R  
ID: 8419 / 177  
Jeep Commander & Cyber Truck



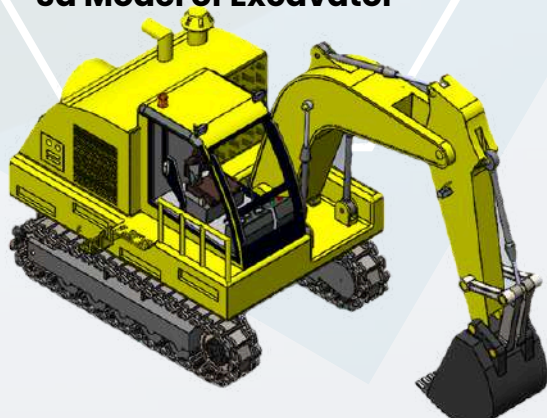
Created by: Vigneash M  
ID: 8418 / 45  
Model of Bomb disposal Robot



Created by: Kalidasa  
ID: 8419 / 207  
Model of Bobcat Loader



Created by: Rathnam Sateesh  
ID: 8419 / 182  
3d Model of Excavator





# NO.1 TRAINING & PLACEMENT UNIT

Bommanhalli & Madiwala - Bangalore

AN ISO 9001:2015 CERTIFIED COMPANY<sup>®</sup>  
**CAD DESK**  
**ITDesk**  
Where Success Begins

SINCE 2007



## OUR PLACEMENT PARTNERS



**MICRON ELECTRICALS**



**3D CONCEPT**



**IVORY SENSE**



**UNIT ALPHA**



**ELEMENT INFOMATICS**



**EMATRIX ENGG. LTD**



**PASOLITE**



**SOLID SYSTEMS**



**CONCEPT ENGINEERING**



**ROYAL LINKS**



**ENERGYAN LTD**



**CALIBER PVT. LTD**



**BAJAJ CAPITAL**



**VERVEE COURTURE**



**ENCLAVAR BUILDERS**



**ADARSH CONTROL  
AUTOMATION**



**SHATHI FACADE'S**



**VARSHINORA DESIGN**

**FOR MORE DETAILS ABOUT OUR  
PLACEMENT PARTNERS - PLEASE  
VISIT THE BELOW WEBSITE LINK**  
<https://cadenggr.com/placement-services>





# NO.1 TRAINING & PLACEMENT UNIT

Bommanhalli & Madiwala - Bangalore

AN ISO 9001:2015 CERTIFIED COMPANY<sup>®</sup>  
**CAD DESK**  
**ITDesk**  
Where Success Begins  
SINCE 2007



## OUR PLACEMENT PARTNERS



ARCADIS



XNG AUTOMATION



NAUVATA ENGINEERING



NEW FIELD ENGINEERING



BHILWARA  
INFOTECHNOLOGY LTD

BHILWARA INFOTECHNOLOGY



PINNACLE



STEEL KRAFT



ELEGANZ INTERIORS



MORPHLE LABS



CREATIVE TECHNOLOGY



SMART QUICK VENTURES



SANCTUM TECHNOLOGIES



GENESIS IT INNOVATIONS



CEA ENGG. AUTOMATION



STAR SWITCH GEARS



QUAD GEN

**FOR MORE DETAILS ABOUT OUR  
PLACEMENT PARTNERS - PLEASE  
VISIT THE BELOW WEBSITE LINK**

<https://cadenggr.com/placement-services>





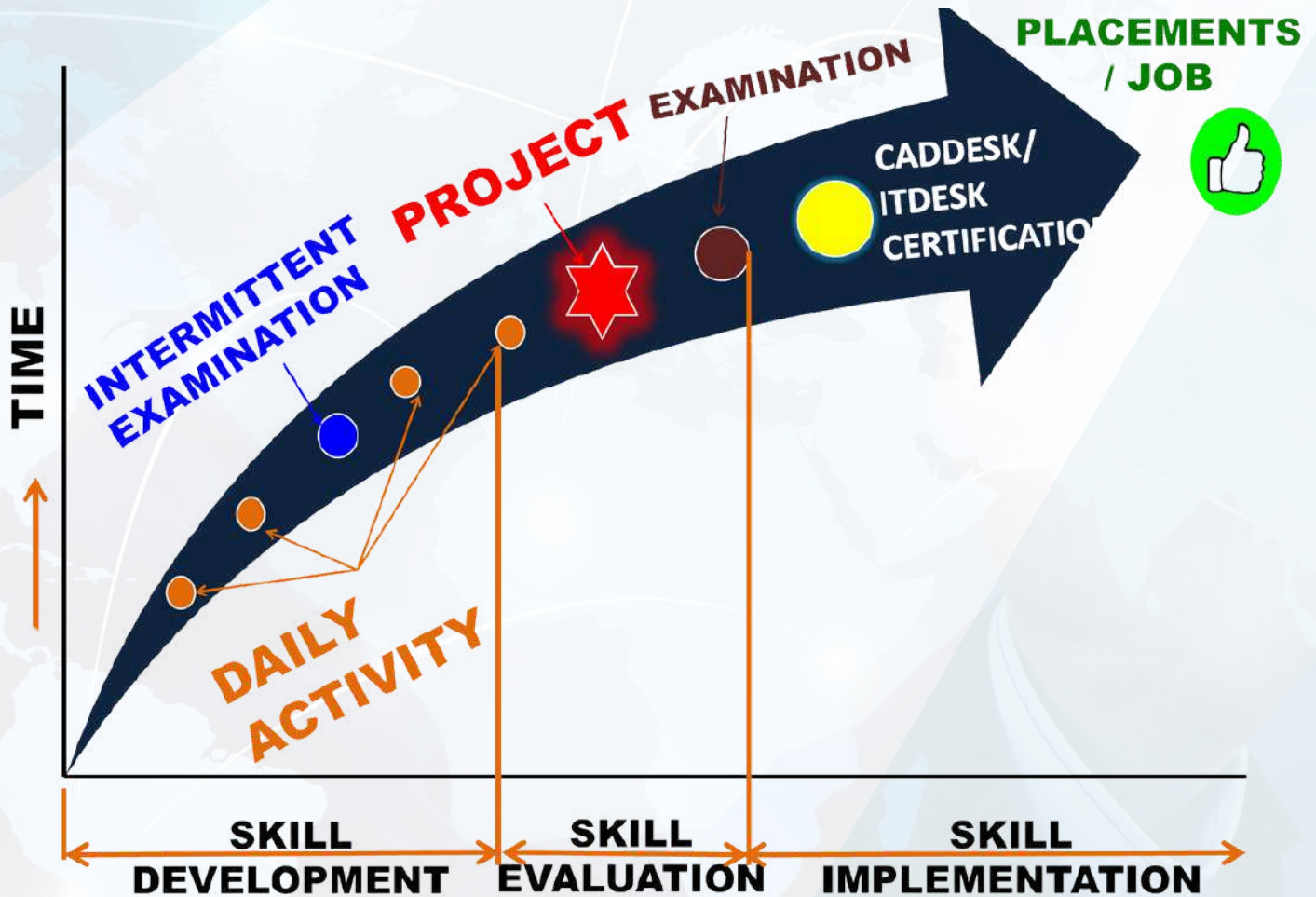
# NO.1 TRAINING & PLACEMENT UNIT

Bommanhalli & Madiwala - Bangalore

AN ISO 9001:2015 CERTIFIED COMPANY<sup>®</sup>  
**CAD DESK**  
**ITDesk**  
Where Success Begins  
SINCE 2007



## OUR POWERFUL PLACEMENT STRATEGY



- 100+ ACTIVITIES ON VARIOUS SOFTWARES
- AMPLE AMOUNT OF PRACTICE TIME
- CAD & IT - SPEED UP EXAMINATION
- CREATIVE & INNOVATIVE PROJECTS
- TECHNICAL & PRACTICAL SESSIONS
- CAREER AWARENESS SESSIONS
- COMPLETE & CLEAR RESUME
- MULTIPLE INTERVIEW OPPORTUNITIES





# NO.1 TRAINING & PLACEMENT UNIT

Bommanhalli & Madiwala - Bangalore

AN ISO 9001:2015 CERTIFIED COMPANY<sup>®</sup>  
**CAD DESK**  
**ITDesk**  
Where Success Begins  
SINCE 2007



## GLIMPSE OF OUR SESSIONS

### Resume preparation Sessions:



### Students Examination:



### Technical Sessions:





# NO.1 TRAINING & PLACEMENT UNIT

Bommanhalli & Madiwala - Bangalore

AN ISO 9001:2015 CERTIFIED COMPANY<sup>®</sup>  
**CAD DESK**  
**IT Desk**  
Where Success Begins

SINCE 2007

## GLIMPSE OF OUR PLACED STUDENTS



FOR MORE DETAILS CLICK HERE: <https://cadenggr.com/placement-services>

Click above link for more Placed students & Placement Partners



<https://caddeskbangalore-bommanhalli.com/placement-category>



+91 - 80500 91122  
+91 - 80500 41122



Page 15



# NO.1 TRAINING & PLACEMENT UNIT

Bommanhalli & Madiwala - Bangalore

## EVENTS & CELEBRATIONS

AN ISO 9001:2015 CERTIFIED COMPANY<sup>®</sup>

# CAD DESK

## IT Desk

Where Success Begins

SINCE 2007



FOR MORE DETAILS CLICK HERE: <https://caddeskbangalore-bommanhalli.com/home>



Click Our Website for Placed students & Partners  
<https://cadenggr.com/placement-services>



+91 - 80500 91122  
+91 - 80500 41122



Initiative of  
Bhaskars Engineering Design & IT Center