

# **NO.1 TRAINING & PLACEMENT UNIT**

**Bommanhalli & Madiwala - Bangalore**

AN ISO 9001:2015 CERTIFIED COMPANY<sup>®</sup>  
**CAD DESK**  
**ITDesk**  
Where Success Begins  
**SINCE 2007**



**IN FOR TRAINING , DEVELOP SKILLS & LEAVE WITH JOB**

## **WELCOME TO ELECTRICAL CAD SOFTWARE TRAINING & PLACEMENTS**

- **Overview of CADDESK / ITDESK** - Page 2
- **Professional CAD Electrical Courses** - Page 3
- **Content of the course Program** - Page 4
- **Course Program Fee structure** - Page 5
- **Over view technical Important sessions** - Pages 6 & 7
- **Projects created by our students** - Pages 8 to 12
- **Placement Partners** - Pages 13 to 14
- **Our powerful placement strategy** - Page 15
- **Glimpse of our sessions** - Page 16
- **Glimpse of our Placed Students** - Page 17

**Managing Director**

Varada Uday Bhaskar  
ME Mechanical Engg. OU University  
16+ Years of Exp



**75<sup>+</sup>**  
**COMPANIES**



**Click website for Guaranteed Course Programs**

**[https://caddeskbangalore-](https://caddeskbangalore-bommanhalli.com/placement-category)**

**[bommanhalli.com/placement-category](https://caddeskbangalore-bommanhalli.com/placement-category)**



**Click our website for Placed students & Partners**

**<https://cadenggr.com/placement-services>**



**Initiative of  
Bhaskars Engineering Design & IT Center**

# NO.1 TRAINING & PLACEMENT UNIT

**Bommanhalli & Madiwala - Bangalore**

AN ISO 9001:2015 CERTIFIED COMPANY<sup>®</sup>  
**CAD DESK**  
**ITDesk**  
Where Success Begins  
SINCE 2007



**CADDESK/ITDESK established in year 2007 has 20+ years of experience in Software Training of CAD/CAE/CAM/Full Stack/IT Software's .**

**We teach wide variety of Software's for Engineering & Degree Students CIVIL/ARCH./INTERIOR/MECH./PRODUCTION/AUTOMOBILE/ELECTRICAL/PUC/DEGREE (B.com/BBA/BA/BSC/BCA/others)/PG/MASTERS**



## **CIVIL ENGINEERING SOFTWARES**

- Auto CAD
- 3DS Max
- REVIT Structure
- REVIT Architecture
- REVIT MEP
- STAAD Pro
- Etabs
- V-Ray
- Google Sketch up
- Enscape
- Quantity Take off
- and others.



## **MECH.ENGINEERING SOFTWARES**

- Auto CAD
- SolidWorks
- Catia
- NX Cad
- Nx Cam
- CREO
- Ansys WB
- REVIT MEP
- INVENTOR
- GD & T
- and others.



## **ELECTRICAL ENGG. SOFTWARES**

- Auto CAD
- PLC/Scada
- Revit MEP
- Matlab
- E-Plan
- Primavera
- And others.



## **IT ENGINEERING SOFTWARES**

- MS Office
- Photoshop
- Corel Draw
- C language
- C++
- Core Java
- Advance Java
- Python
- Tally
- PHP
- .Net
- AWS
- SAP FICO/MM
- HTML
- JQuery
- My SQL
- Digital Marketing
- AI and others.

**kindly note all the software's are not under Placement Category. For more details on the Electrical CAD Placement Category courses, Please refer Page no. 6**



# NO.1 TRAINING & PLACEMENT UNIT

**Bommanhalli & Madiwala - Bangalore**

AN ISO 9001:2015 CERTIFIED COMPANY<sup>®</sup>  
**CAD DESK**  
**ITDesk**  
Where Success Begins  
**SINCE 2007**



## **ELECTRICAL CAD COURSES**

### **AutoCAD Electrical:**



**AutoCAD**  
ELECTRICAL COURSE

AutoCAD Electrical is a specialized toolset within the AutoCAD software suite, designed for creating and modifying electrical control systems.

It includes features like automated wire numbering, circuit building, and report generation, boosting productivity for control engineering tasks. This toolset helps professionals create, modify, and document electrical control systems efficiently, using an industry-specific toolset for electrical design.

.....

### **Revit MEP:**



Revit MEP is a specialized version of the Autodesk Revit software, focused on modeling Mechanical, Electrical, and Plumbing (MEP) systems within a building information modeling (BIM) environment. It allows users to create 3D models of MEP systems including ductwork, piping, electrical conduits, and equipment. coordinate them with other architectural & structural models. Revit MEP is used by electrical engineers to design and document electrical systems in buildings. It allows for integrated design, analysis, and documentation of electrical components, circuits, and equipment.

.....

### **E-Plan Electric:**



Eplan Electric is a software solution specifically designed for electrical engineers to plan and design electrical systems. It's used for creating schematics, managing projects, and generating documentation, streamlining the electrical engineering process. Eplan Electric automates repetitive tasks and uses standardized templates, leading to faster design processes and reduced errors.

# NO.1 TRAINING & PLACEMENT UNIT

**Bommanhalli & Madiwala - Bangalore**

AN ISO 9001:2015 CERTIFIED COMPANY<sup>®</sup>  
**CAD DESK**  
**ITDesk**  
Where Success Begins

**SINCE 2007**



## **CONTENT OF THE PROFESSIONAL ELECTRICAL CAD COURSE PROGRAM**

### **AutoCAD Electrical**

- Student will be starting from the Basics of AutoCAD 2d for 3-4 sessions, since the knowledge and commands of basic AutoCAD are important.
- Student will be able to prepare wide variety of 2d drawings
- Circuit drawings
- Wiring drawings
- Schematic drawings
- Panel drawings
- Plc Drawings
- Ladders
- Creation and use of Existing Electrical symbols - Connectors, terminals, transformers, resistors, diodes & rectifiers.
- Student will also understand creation of drawing templates,
- Project management, editing tools, legend creation
- Identification of drawing errors
- Report generation etc.

### **REVIT MEP**

- Student will be starting from the Basics of Revit Arch. for 3-4 sessions.
- In Revit Arch basics student will learn how to create the walls, partitions, slab, Roof, Doors, Windows & Project Units.
- Revit MEP is Building Information Modeling software where a student can learn Mechanical, Electrical & Plumbing.
- Student will gain the Knowledge of HVAC (Heating, Ventilation & Air Conditioning)
- Plumbing & Piping design
- Electrical layout
- Editing tools
- Family Creation, Spaces & Zones.
- Creation of Power Circuits
- Creating Switch Systems
- Cable tray, Electrical components/ Equipment's
- Electrical devices etc.
- Fire fighting

### **E-Plan Electric**

- E-Plan is a higher end software in a broader range provides service solutions in the fields of Electrical, Automation & Mechatronic engineering.
- E-Plan is one of world's leading design software solutions for Machine, Plant, Automobiles & Panel Builders.
- E -Plan helps in avoiding errors and increase productivity. Student will be learning:
  - E-Plan Data Portal
  - Graphical Editor tools
  - Panel drawings
  - Creating schematics
  - Creating project
  - Editing tools & Identification of Devices
  - Report generation &
  - Project management etc.





**PROFESSIONAL ELECTRICAL CAD  
PLACEMENT COURSES FEE STRUCTURE**

SL.No.	2 Course Program	3 Course Program
<b>1</b>	AutoCAD Electrical	AutoCAD Electrical
<b>2</b>	Revit MEP	Revit MEP
<b>3</b>	-	E-Plan
<b>Actual Course Fee</b>	29,000/-Rs	45,000/-Rs
<b>Final Course Fee</b>	25,500/-Rs + 1500/-Rs Books Fee	36,500/-Rs + 1500/-Rs Books Fee
<b>Final Course Fee (1 EMI)</b>	25,000/-Rs + Books Included	35,000/-Rs + Books Included

**Note:** • All the above discounts are applicable for the Offline Students, Passout after 2022.  
• There will be no change in the course program structure once receipt is generated.  
• Incase of any career gap, arrears / backlog meet the management for guidance.



# NO.1 TRAINING & PLACEMENT UNIT

Bommanhalli & Madiwala - Bangalore

AN ISO 9001:2015 CERTIFIED COMPANY<sup>®</sup>  
**CAD DESK**  
**ITDesk**  
Where Success Begins

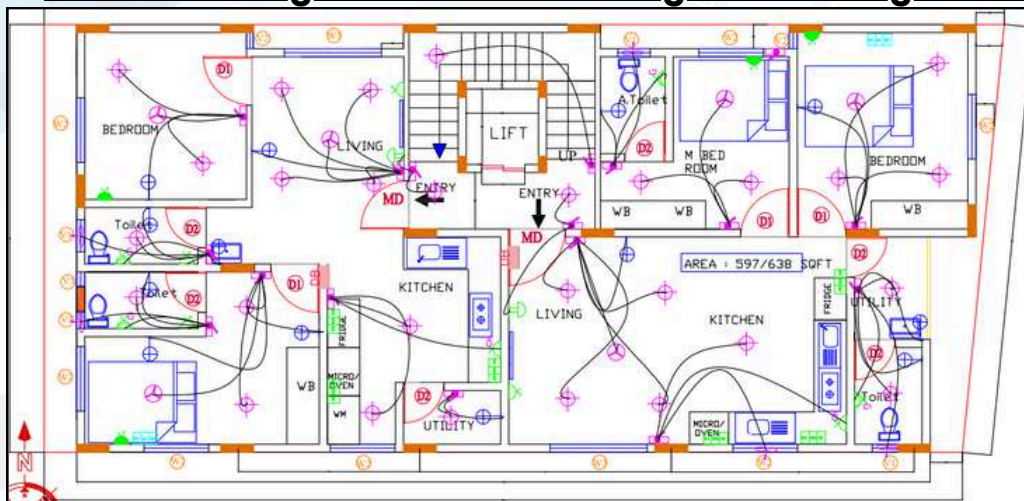
SINCE 2007



## TECHNICALLY IMPORTANT THINGS FOR INTERVIEW & CAREER

- Building Electrification
- Load Calculation table
- Railway Electrification
- Other Practical Drawings

### Understanding of Real time drawings on Building Electrification & Electrical Legend



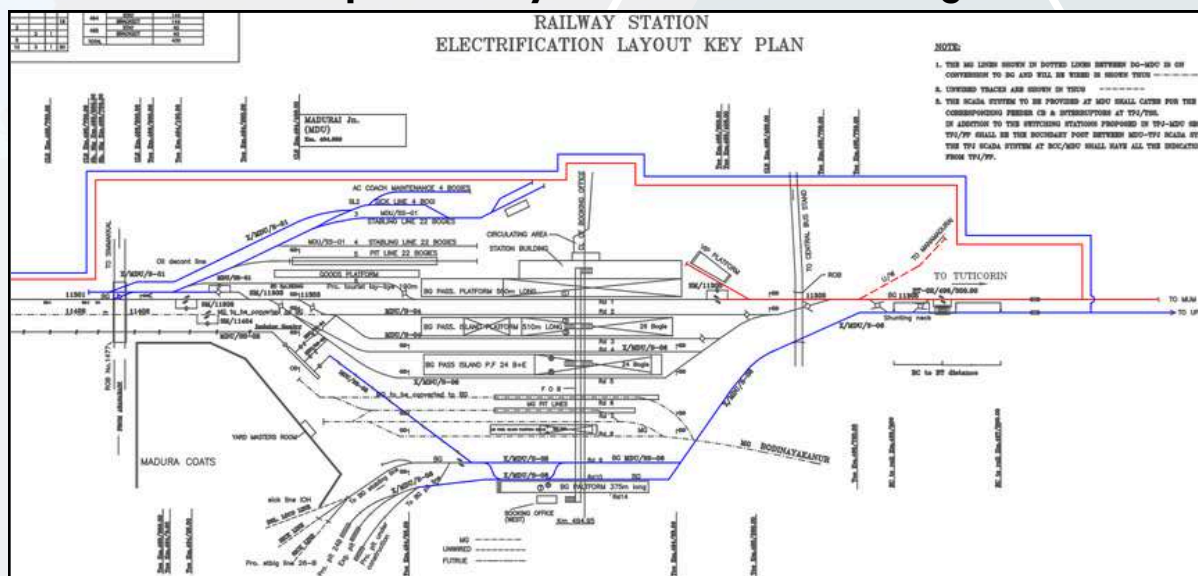
ELECTRICAL LEGEND	
	SWITCH BOARD AT 1050 MM FROM FFL
	BELL PUSH BUTTON AT 1050 MM FROM FFL
	CEILING LIGHT
	WALL BRACKET LIGHT AT 2100 MM FROM FFL
	BELL AT 2400 FROM FFL
	2/3 PIN 6A SWITCHED SOCKET OUTLET AT 300 MM FROM FFL
	3 PIN 6/16A SWITCHED SOCKET OUTLET AT 300 MM FROM FFL
	3 PIN 6/16A SWITCHED SOCKET OUTLET AT 1800 MM FROM FFL GEYSER
	3 PIN 25A SWITCHED SOCKET OUTLET AT 300 MM FROM FFL GEYSER
	2/3 PIN 6A SWITCHED SOCKET OUTLET AT 300 MM FOR CHIMNEY
	EXHAUST FAN AS PER WINDOW DETAIL
	CEILING FAN
	TUBE LIGHT
	2 SWITCH AND 1 SOCKET 6A
	1 SWITCH AND 1 SOCKET 6A
	1 SWITCH AND 1 SOCKET 16 A

### Sample Load Calculation Table

LOAD CALCULATION TABLE- GROUND FLOOR				
S.NO	DEVICE DESCRIPTION	LOAD CAPACITY (w)	QTY.	TOTAL LOAD REQUIRED(W)
1	CEILING LIGHT	20 WATT	22	440 W
2	SWITH BOARD AT 1050 MM FROM FFL		6	
3	WALL BRACKET LIGHT AT 2100 MM FROM FFL	15 WATT	8	120 W
4	2/3 PIN 6A SWITCH SCOKET OUTLET AT 300 MM FROM FFL		3	
5	3 PIN 6/16A SWITCH SCOKET OUTLET AT 300 MM FROM FFL			
6	3 PIN 6/16A SWITCH SCOKET OUTLET AT 1800 MM FROM FFLGEYSER	2000W	1	2000 W
7	2/3 PIN 6A SWITCH SCOKET OUTLET FOR CHIMNEY	6 (A)	1	
8	EXHAUST FAN AS PER FOR DETAIL	50 W	2	100 W
9	CEILING FAN	60/70W	3	
10	2 SWITCH AND 1 SCOKET 5A	5(A)	3	
11	1 SWITCH 1 SCOKET 5 A	5(A)		
12	1 SWITCH 1 SCOKET 15 A	15(A)	2	
13	WELCOME LIGHT			
14	BELL AT 2400 MM FROM FFL			
15	3 PIN 6/16A SWITCH SCOKET OUTLET AT 1800 MM FROM FFL AC	200 W	2	200 W

LOAD CALCULATION TABLE FIRST & SECOND FLOOR				
S.NO	DEVICE DESCRIPTION	LOAD CAPACITY (w)	QTY.	TOTAL LOAD REQUIRED(W)
1	CEILING LIGHT	20 WATT	32	640 V
2	SWITH BOARD AT 1050 MM FROM FFL		16	
3	WALL BRACKET LIGHT AT 2100 MM FROM FFL	15 WATT	11	165 V
4	2/3 PIN 6A SWITCH SCOKET OUTLET AT 300 MM FROM FFL		3	
5	3 PIN 6/16A SWITCH SCOKET OUTLET AT 300 MM FROM FFL			
6	3 PIN 6/16A SWITCH SCOKET OUTLET AT 1800 MM FROM FFLGEYSER	2000W	4	8000 W
7	2/3 PIN 6A SWITCH SCOKET OUTLET FOR CHIMNEY	6 (A)	2	
8	EXHAUST FAN AS PER FOR DETAIL	50 W	5	250 V
9	CEILING FAN	60/70W	6	420 V
10	2 SWITCH AND 1 SCOKET 5A	5(A)		
11	1 SWITCH 1 SCOKET 5 A	5(A)	2	
12	1 SWITCH 1 SCOKET 15 A	15(A)	6	
13	WELCOME LIGHT			
14	BELL AT 2400 MM FROM FFL		2	
15	3 PIN 6/16A SWITCH SCOKET OUTLET AT 1800 MM FROM FFL AC	200 W	4	800 V

### Sample Railway Electrification Drawings



# NO.1 TRAINING & PLACEMENT UNIT

## ***Bommanhalli & Madiwala - Bangalore***

AN ISO 9001:2015 CERTIFIED COMPANY®

**CAD DESK**

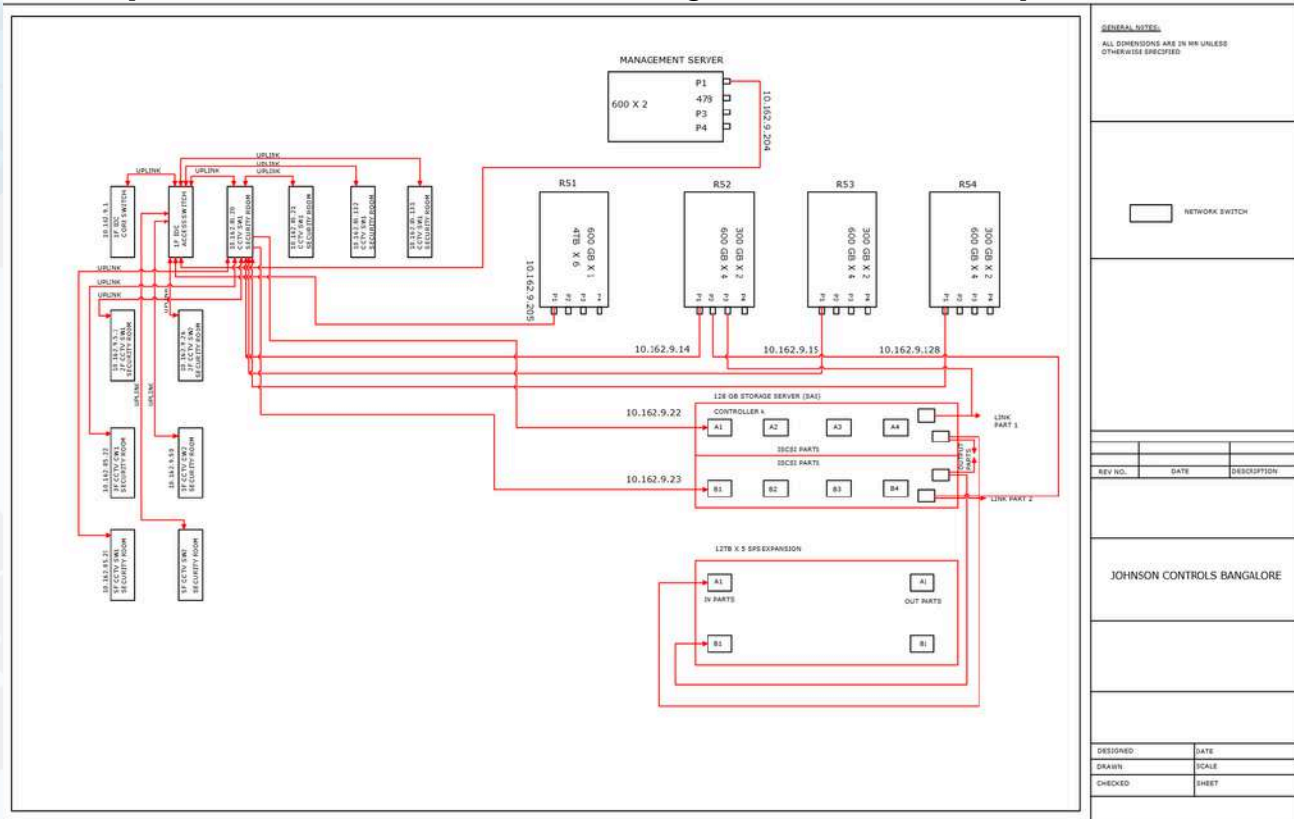
**ITDesk**  
Where Success Begins

## SINCE 2007

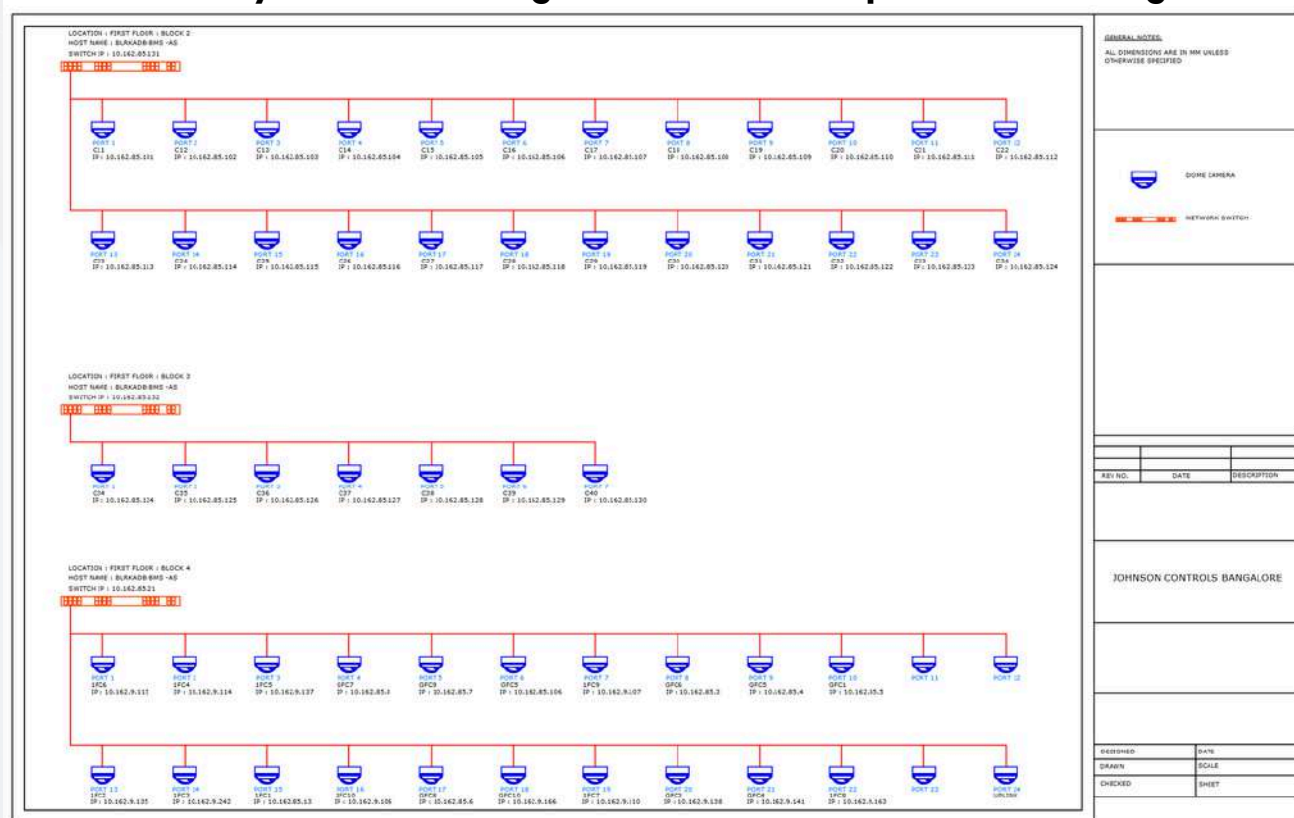


## TECHNICALLY IMPORTANT THINGS FOR INTERVIEW & CAREER

## Study of - Server room electrical wiring - Johnson control practical drawings



## Study of - CCTV wiring - Johnson control practical drawings





# NO.1 TRAINING & PLACEMENT UNIT

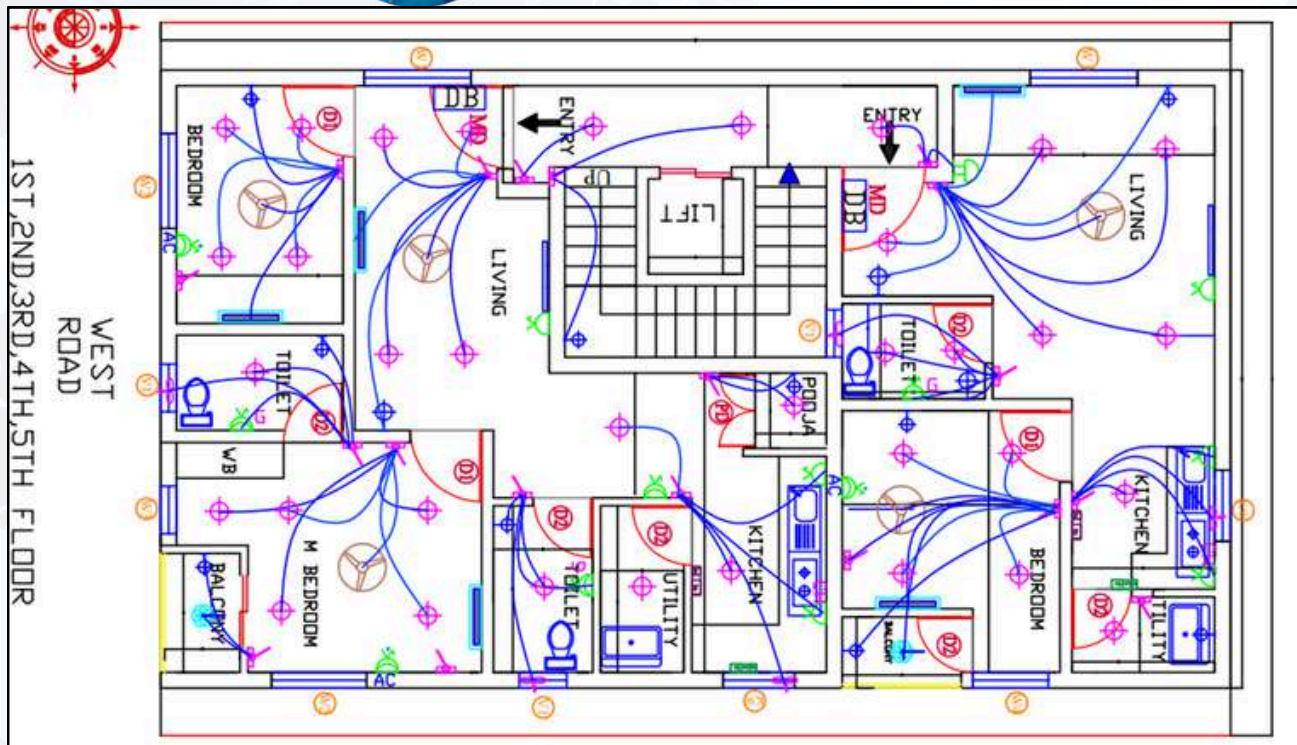
Bommanhalli & Madiwala - Bangalore

AN ISO 9001:2015 CERTIFIED COMPANY<sup>®</sup>  
**CAD DESK**  
**ITDesk**  
Where Success Begins  
SINCE 2007



## SAMPLE ELECTRICAL PROJECTS OF OUR STUDENTS

Created by: Karthick  
ID: 8419 / 225  
Building Electrification



ELECTRICAL LEGEND		QTY	WATTS		TOTAL W
	SWITCH BOARD AT 1050 MM FROM FFL	18	-	-	-
	CEILING LIGHT 20W	33	20 w	20 w	660 W
	WALL BRACKET LIGHT AT 2100 MM FROM FFL	13	9W	9W	117W
	BELL AT 2400 FROM FFL	2	-	-	-
	2/3 PIN 6A SWITCHED SOCKET OUTLET AT 300 MM FROM FFL	3	60W	60W	180W
	3 PIN 6/16A SWITCHED SOCKET OUTLET AT 2100 MM FROM FFL FOR AC	3	200W	3000W	9000W
	3 PIN 6/16A SWITCHED SOCKET OUTLET AT 300 MM FROM FFL	2	200W	200W	200W
	3 PIN 6/16A SWITCHED SOCKET OUTLET AT 1800 MM FROM FFL FOR GEYSER	3	200W	2000W	6000W
	3 PIN 25A SWITCHED SOCKET OUTLET FOR AC AT 300 MM FROM FFL	1	-	-	-
	2/3 PIN 6A SWITCH SOCKET OUTLET FOR CHIMNEY	2	60W	60W	120W
	EXHAUST FAN AS PER WINDOW DETAIL	5	40W	40W	200W
	CEILING FAN	5	80W	80W	400W
	4 Switch and 1 Socket 5A	-	-	-	-
	2 Switch and 1 Socket 16A REFEIGERATOR	2	800W	800W	1600W
	2 SWITCH 2 SOCKET 16A	2	-	-	-
	Hanging light	2	-	-	-
	Tube light	2	20W	20W	40W
THIS IS ONE FLOOR READING 1ST TO 5TH (18471)*5 = 73668 W					18417 W



# NO.1 TRAINING & PLACEMENT UNIT

Bommanhalli & Madiwala - Bangalore

AN ISO 9001:2015 CERTIFIED COMPANY<sup>®</sup>  
**CAD DESK**  
**IT Desk**  
Where Success Begins  
SINCE 2007

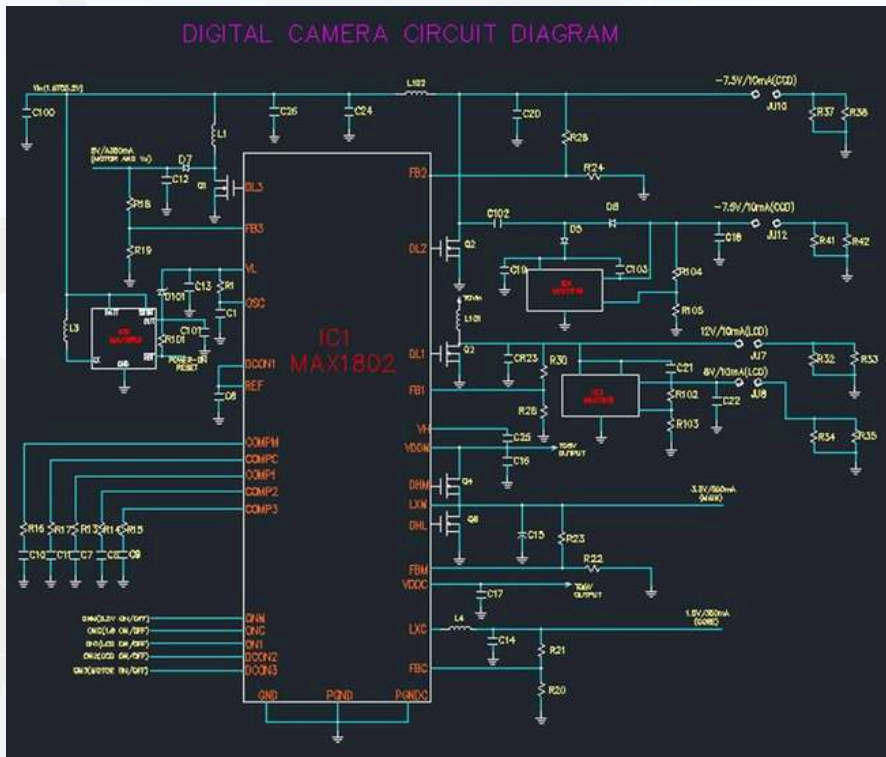


## SAMPLE ELECTRICAL PROJECTS OF OUR STUDENTS

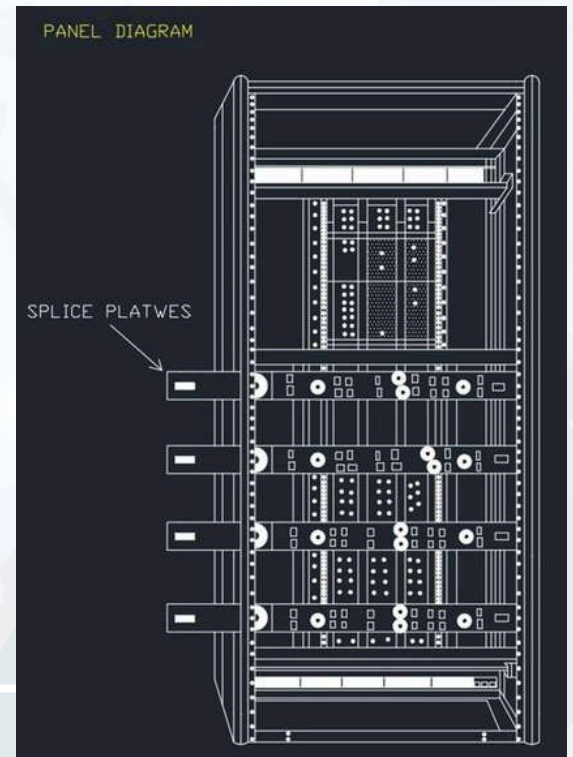
Created by: N Lokesh  
ID: 8419 / 142  
Various Electrification  
Drawings & HVAC lines



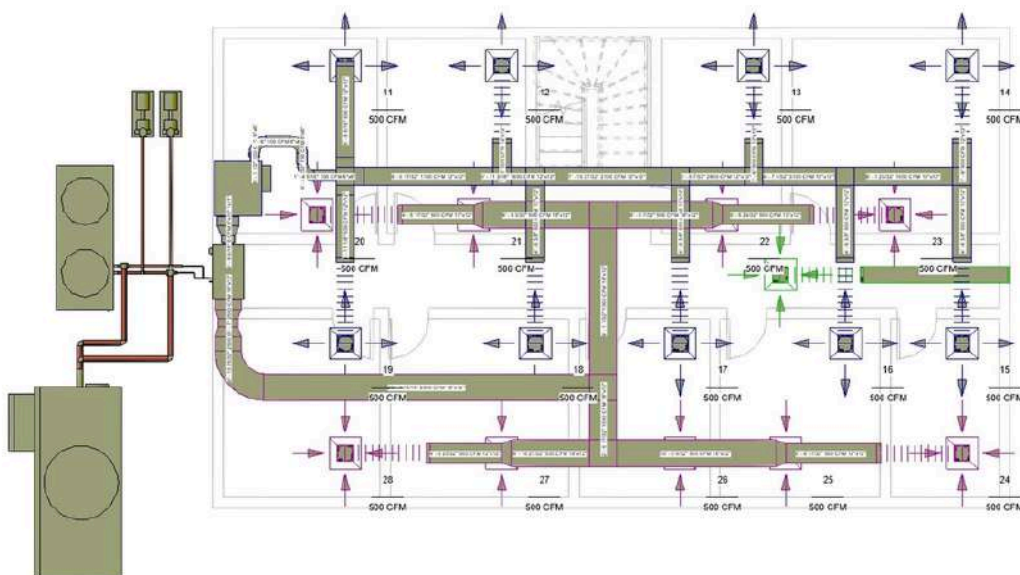
### CIRCUIT DIAGRAM



### CONTROL PANEL



### HVAC - COLLING TOWERS & CHILLERS



# NO.1 TRAINING & PLACEMENT UNIT

Bommanhalli & Madiwala - Bangalore

AN ISO 9001:2015 CERTIFIED COMPANY<sup>®</sup>  
**CAD DESK**  
**IT Desk**  
Where Success Begins  
SINCE 2007



## SAMPLE ELECTRICAL PROJECTS OF OUR STUDENTS

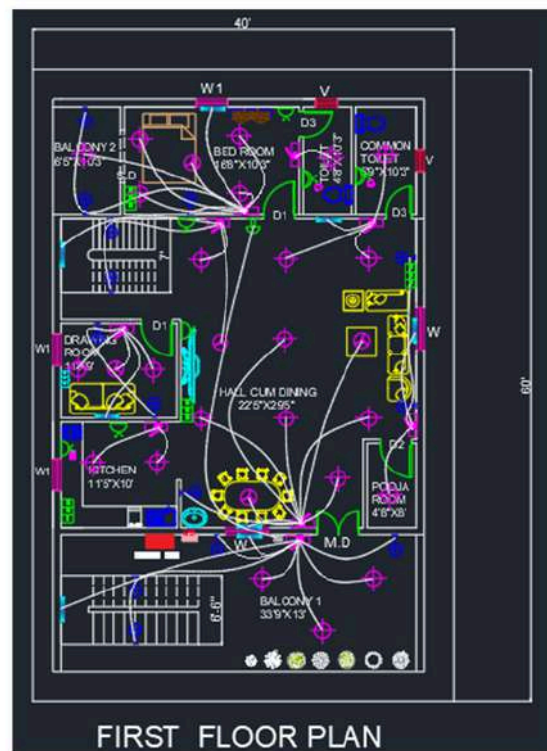
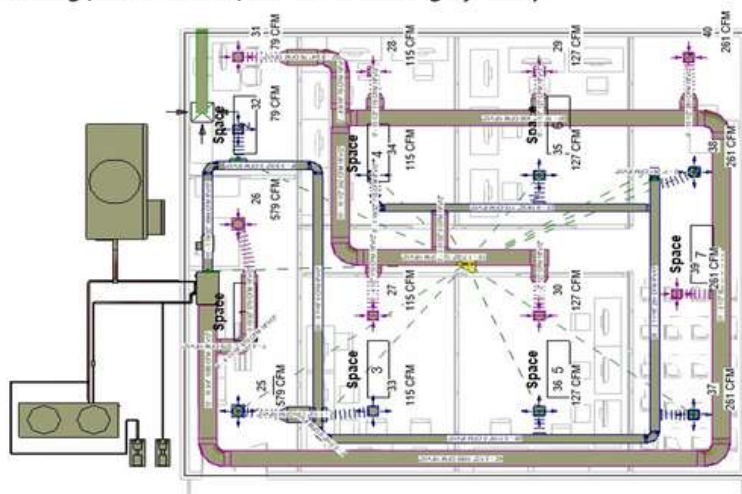
Created by: Annangi Charan

ID: 8419 / 154

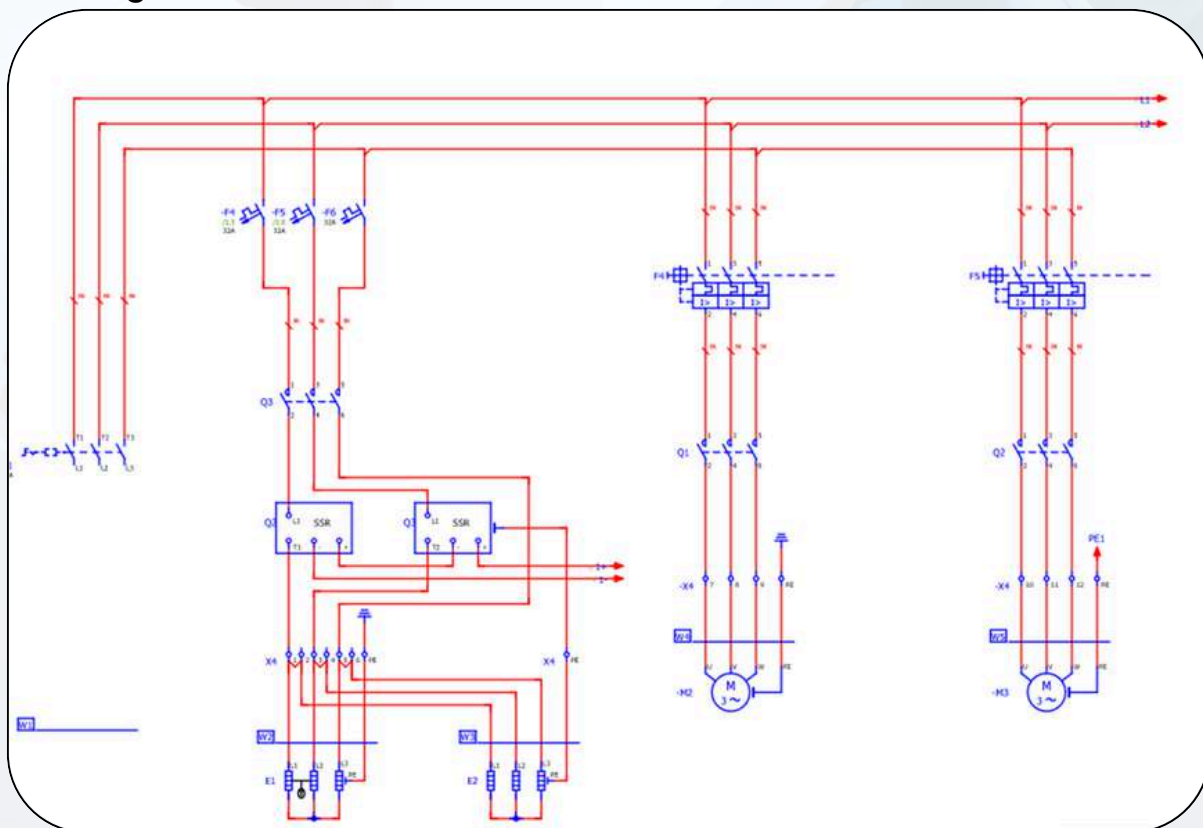
Various Electrification  
Drawings & HVAC lines



(Heating , Ventilation , Air Conditioning System)



Schematic Diagram in E-Plan





# NO.1 TRAINING & PLACEMENT UNIT

Bommanhalli & Madiwala - Bangalore

AN ISO 9001:2015 CERTIFIED COMPANY<sup>®</sup>  
**CAD DESK**  
**ITDesk**  
Where Success Begins

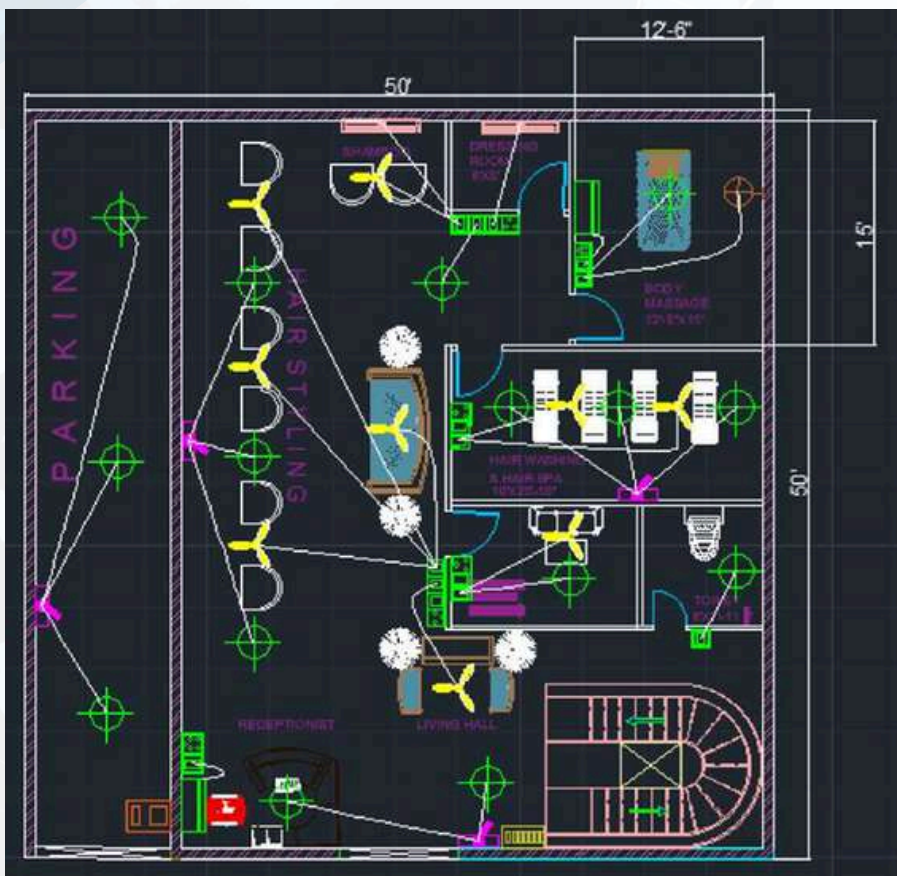
SINCE 2007

## SAMPLE ELECTRICAL PROJECTS

Created by: J Vamsi

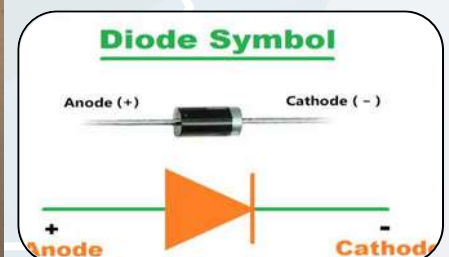
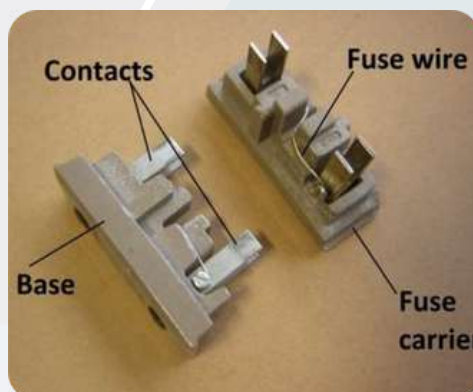
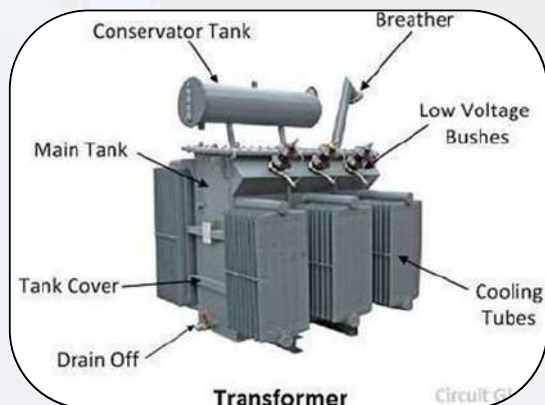
ID: 8419 / 265

Various Electrification Drawings



PROJECT LIST		
NAME OF THE	QUANTITY	HEIGHT
SWITCH BOARD	Q	1.4
CEILING FAN	29	10
2 SWITCH AND 1 SOCKET 18A	3	1.4
2 SWITCH AND 1 SOCKET BA	8	
1 SWITCH AND 1 SOCKET 18 A	3	1.4
3 SWITCH AND 1 SOCKET BA	6	1.4
AIR CONDITIONER	6	2.5
WALL LIGHT	3	4.5
TUBE LIGHT		4.5
CEILING LIGHT	38	9
		1.7
METER BOX	1	1.7

## PPT OF VARIOUS ELECTRICAL ELEMENTS



# NO.1 TRAINING & PLACEMENT UNIT

Bommanhalli & Madiwala - Bangalore

AN ISO 9001:2015 CERTIFIED COMPANY<sup>®</sup>  
**CAD DESK**  
**ITDesk**  
Where Success Begins

SINCE 2007

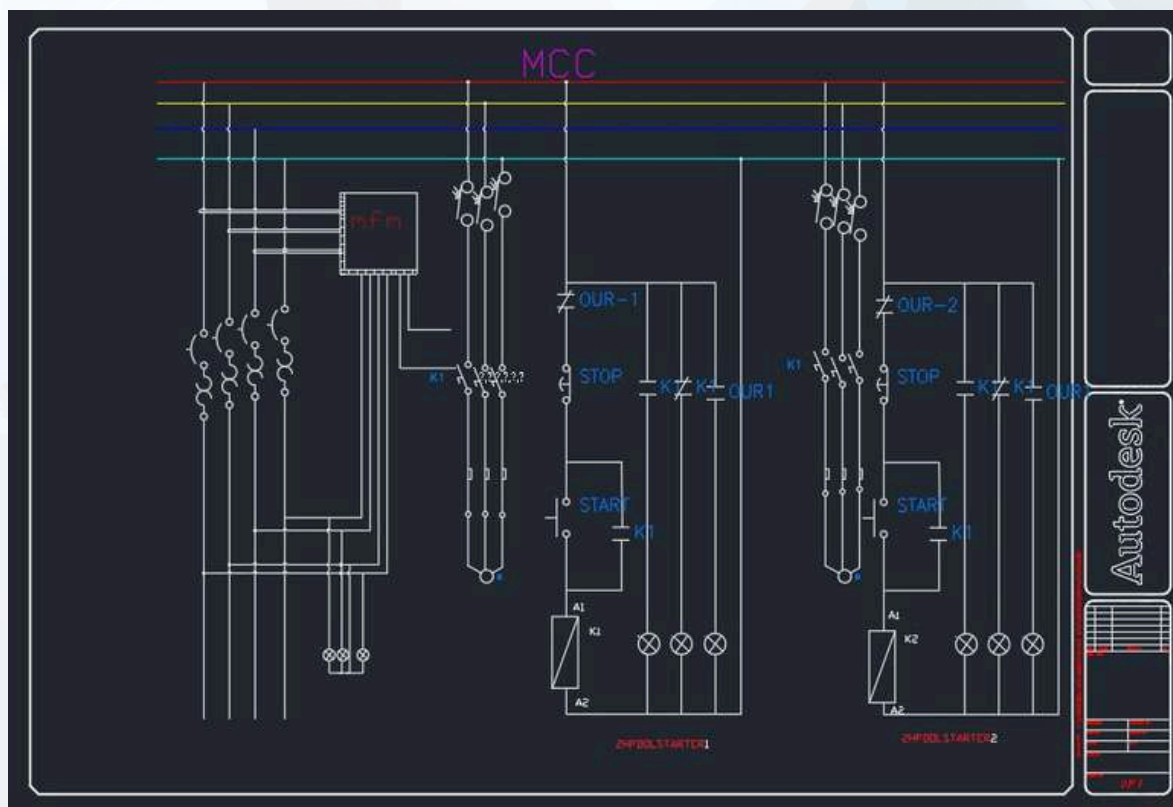
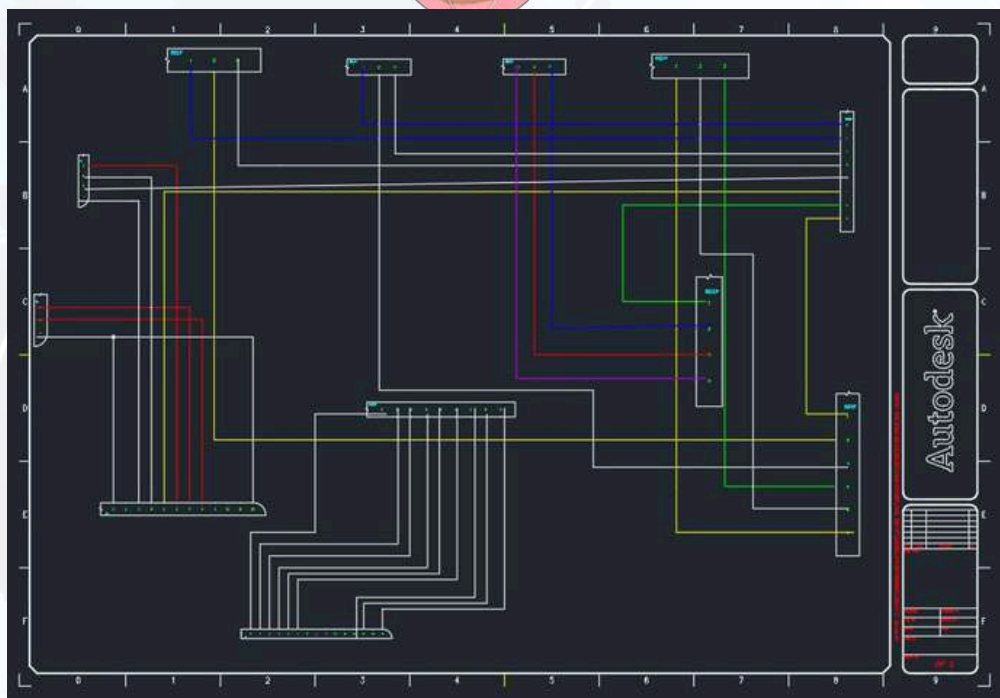
## SAMPLE ELECTRICAL PROJECTS



Created by: Shakthi k

ID: 8418 / 95

Various Electrification Drawings





# NO.1 TRAINING & PLACEMENT UNIT

Bommanhalli & Madiwala - Bangalore

AN ISO 9001:2015 CERTIFIED COMPANY<sup>®</sup>  
**CAD DESK**  
**ITDesk**  
Where Success Begins

SINCE 2007



## OUR PLACEMENT PARTNERS



**MICRON ELECTRICALS**



**3D CONCEPT**



**IVORY SENSE**



**UNIT ALPHA**



**ELEMENT INFOMATICS**



**EMATRIX ENGG. LTD**



**PASOLITE**



**SOLID SYSTEMS**



**CONCEPT ENGINEERING**



**ROYAL LINKS**



**ENERGYAN LTD**



**CALIBER PVT. LTD**



**BAJAJ CAPITAL**



**VERVEE COURTURE**



**ENCLAVAR BUILDERS**



**ADARSH CONTROL  
AUTOMATION**



**SHATHI FACADE'S**



**VARSHINORA DESIGN**

**FOR MORE DETAILS ABOUT OUR  
PLACEMENT PARTNERS - PLEASE  
VISIT THE BELOW WEBSITE LINK**  
<https://cadenggr.com/placement-services>





# NO.1 TRAINING & PLACEMENT UNIT

Bommanhalli & Madiwala - Bangalore

AN ISO 9001:2015 CERTIFIED COMPANY<sup>®</sup>  
**CAD DESK**  
**ITDesk**  
Where Success Begins  
SINCE 2007



## OUR PLACEMENT PARTNERS



ARCADIS



XNG AUTOMATION



NAUVATA ENGINEERING



NEW FIELD ENGINEERING



BHILWARA  
INFOTECHNOLOGY LTD

BHILWARA INFOTECHNOLOGY



PINNACLE



STEEL KRAFT



ELEGANZ INTERIORS



MORPHLE LABS



CREATIVE TECHNOLOGY



SMART QUICK VENTURES



SANCTUM TECHNOLOGIES



GENESIS IT INNOVATIONS



CEA ENGG. AUTOMATION



STAR SWITCH GEARS



QUAD GEN

**FOR MORE DETAILS ABOUT OUR  
PLACEMENT PARTNERS - PLEASE  
VISIT THE BELOW WEBSITE LINK**

<https://cadenggr.com/placement-services>





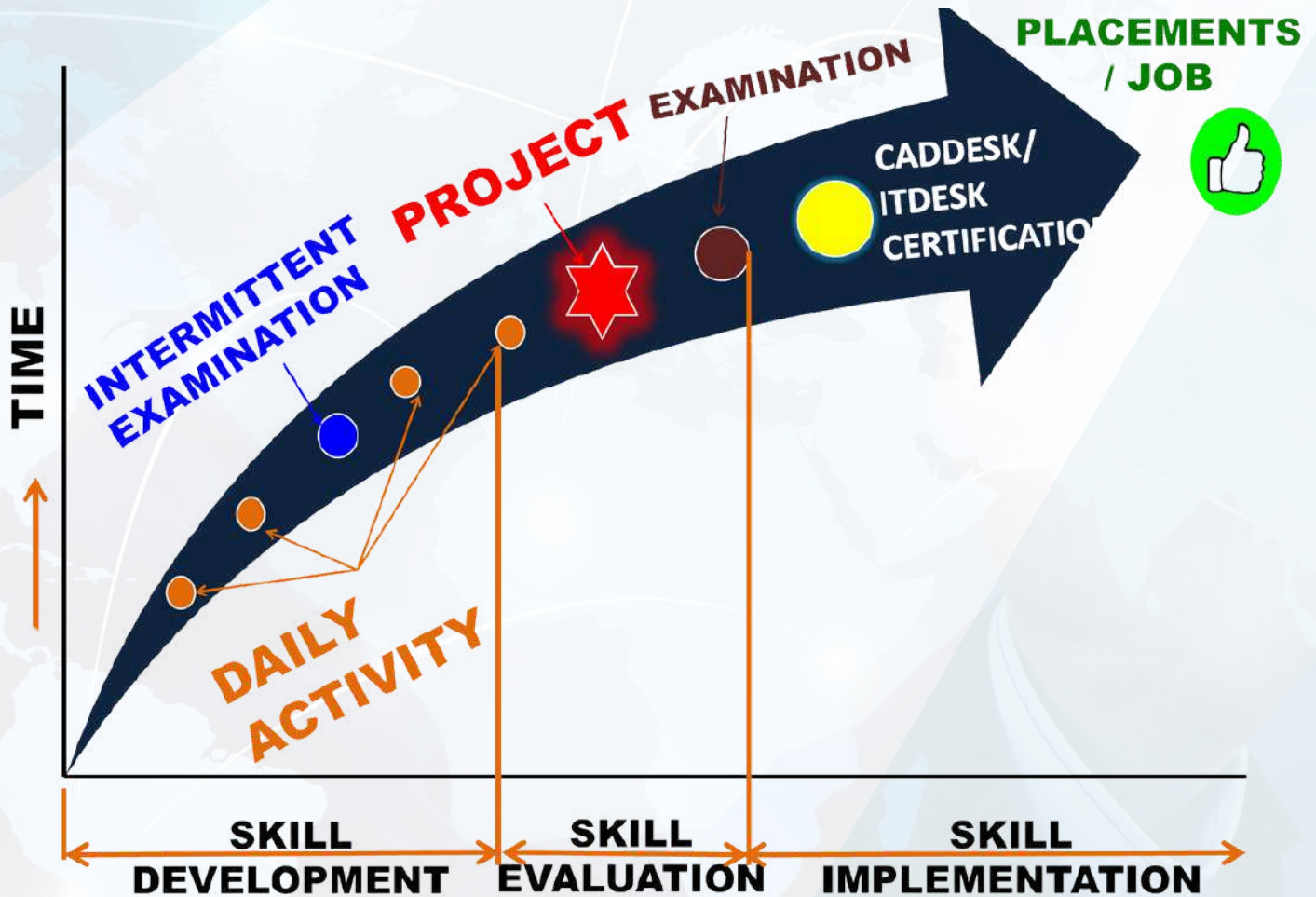
# NO.1 TRAINING & PLACEMENT UNIT

Bommanhalli & Madiwala - Bangalore

AN ISO 9001:2015 CERTIFIED COMPANY<sup>®</sup>  
**CAD DESK**  
**ITDesk**  
Where Success Begins  
SINCE 2007



## OUR POWERFUL PLACEMENT STRATEGY



- 100+ ACTIVITIES ON VARIOUS SOFTWARES
- AMPLE AMOUNT OF PRACTICE TIME
- CAD & IT - SPEED UP EXAMINATION
- CREATIVE & INNOVATIVE PROJECTS
- TECHNICAL & PRACTICAL SESSIONS
- CAREER AWARENESS SESSIONS
- COMPLETE & CLEAR RESUME
- MULTIPLE INTERVIEW OPPORTUNITIES





# NO.1 TRAINING & PLACEMENT UNIT

Bommanhalli & Madiwala - Bangalore

AN ISO 9001:2015 CERTIFIED COMPANY<sup>®</sup>  
**CAD DESK**  
**ITDesk**  
Where Success Begins  
SINCE 2007



## GLIMPSE OF OUR SESSIONS

### Resume preparation Sessions:



### Students Examination:



### Technical Sessions:





# NO.1 TRAINING & PLACEMENT UNIT

Bommanhalli & Madiwala - Bangalore

AN ISO 9001:2015 CERTIFIED COMPANY<sup>®</sup>  
**CAD DESK**  
**IT Desk**  
Where Success Begins

SINCE 2007

## GLIMPSE OF OUR PLACED STUDENTS



FOR MORE DETAILS CLICK HERE: <https://cadenggr.com/placement-services>

Click above link for more Placed students & Placement Partners



<https://caddeskbangalore-bommanhalli.com/placement-category>



+91 - 80500 91122  
+91 - 80500 41122



Page 17



# NO.1 TRAINING & PLACEMENT UNIT

Bommanhalli & Madiwala - Bangalore

## EVENTS & CELEBRATIONS

AN ISO 9001:2015 CERTIFIED COMPANY<sup>®</sup>

# CAD DESK

## IT Desk

Where Success Begins

SINCE 2007



FOR MORE DETAILS CLICK HERE: <https://caddeskbangalore-bommanhalli.com/home>



Click Our Website for Placed students & Partners  
<https://cadenggr.com/placement-services>



+91 - 80500 91122  
+91 - 80500 41122



Initiative of  
Bhaskars Engineering Design & IT Center