

NO.1 TRAINING & PLACEMENT UNIT

Bommanhalli & Madiwala - Bangalore

AN ISO 9001:2015 CERTIFIED COMPANY[®]

CAD DESK

ITDesk

Where Success Begins
SINCE 2007



IN FOR TRAINING , DEVELOP SKILLS & LEAVE WITH JOB

WELCOME TO CIVIL - BIM CAD SOFTWARE TRAINING & PLACEMENTS

- **Overview of CADDESK / ITDESK** - Page 2
- **Master CAD Civil BIM CAD Courses** - Page 3
- **Content of the course Program** - Pages 4 & 5
- **Course Program Fee structure** - Page 6
- **Additional Important things for Interview** - Page 7
- **Projects created by our students** - Pages 9 - 14
- **Placement Partners** - Pages 15 - 16
- **Our powerful placement strategy** - Page 17
- **Glimpse of our sessions** - Page 18
- **Glimpse of our Placed Students** - Page 19

Managing Director

Varada Uday Bhaskar
ME Mechanical Engg. OU University
16+ Years of Exp



75⁺
COMPANIES



Click website for Guaranteed Course Programs

[https://caddeskbangalore-](https://caddeskbangalore-bommanhalli.com/placement-category)

[bommanhalli.com/placement-category](https://caddeskbangalore-bommanhalli.com/placement-category)



Click our website for Placed students & Partners

<https://cadenggr.com/placement-services>



**Initiative of
Bhaskars Engineering Design & IT Center**

NO.1 TRAINING & PLACEMENT UNIT

Bommanhalli & Madiwala - Bangalore

AN ISO 9001:2015 CERTIFIED COMPANY[®]
CAD DESK
ITDesk
Where Success Begins
SINCE 2007



CADDESK/ITDESK established in year 2007 has 20+ years of experience in Software Training of CAD/CAE/CAM/Full Stack/IT Software's .

We teach wide variety of Software's for Engineering & Degree Students CIVIL/BIM/ARCH./INTERIOR/MECH./PRODUCTION/AUTOMOBILE/ELECTRICAL/ PUC/DEGREE (B.com/BBA/BA/BSC/BCA/others)/ PG/MASTERS



CIVIL ENGINEERING SOFTWARES

- Auto CAD
- 3DS Max
- REVIT Structure
- REVIT Architecture
- REVIT MEP
- STAAD Pro
- Etabs
- V-Ray
- Google Sketch up
- Enscape
- Quantity Take off
- and others.



MECH.ENGINEERING SOFTWARES

- Auto CAD
- SolidWorks
- Catia
- NX Cad
- Nx Cam
- CREO
- Ansys WB
- REVIT MEP
- INVENTOR
- GD & T
- and others.



ELECTRICAL ENGG. SOFTWARES

- Auto CAD
- PLC/Scada
- Matlab
- Primavera
- And others.



IT ENGINEERING SOFTWARES

- MS Office
- Photoshop
- Corel Draw
- C language
- C++
- Core Java
- Advance Java
- Python
- Tally
- PHP
- .Net
- AWS
- SAP FICO/MM
- HTML
- JQuery
- My SQL
- Digital Marketing
- AI and others.

kindly note all the software's are not under Placement Category. For more details on the CIVIL - BIM CAD Placement Category courses, Please refer Page no. 6

NO.1 TRAINING & PLACEMENT UNIT

Bommanhalli & Madiwala - Bangalore

AN ISO 9001:2015 CERTIFIED COMPANY[®]
CAD DESK
ITDesk
Where Success Begins
SINCE 2007



CIVIL - BIM CAD COURSES

AutoCAD 2d/3d:



AutoCAD, a computer-aided design (CAD) software, allows 2D and 3D design and drafting. 2D drafting in AutoCAD offers precise control over lines, shapes, dimensions, and annotation for creating various Plans.

AutoCAD 3D enables users to create detailed 3D models, analyze data, and visualize designs in a digital environment.

Sketch Up:



SketchUp, a 3D modeling software, is widely used for architectural, interior design, engineering, 3D printing, and more. Its ease of use and versatility make it a popular choice for various applications. SketchUp users may upload and download 3D models from 3D Warehouse.

V-Ray:



V-Ray is a powerful rendering plugin for SketchUp, crafted to help designers, architects, and creators transform their SketchUp models into lifelike visuals.

From initial concept sketches to photorealistic renders, V-Ray supports you at every stage of the design process, enabling you to communicate your vision with clarity and impact.

Revit Arch:



Revit Architecture is a software that helps architects and other professionals design, document, and manage building projects. It's known for its 3D modeling capabilities, parametric design, and collaborative features.

Revit is also used effectively in coordinating design with structural & MEP discipline. Revit's parametric approach, ensure consistency & accuracy.

Revit MEP:



Revit MEP is a specialized version of the Autodesk Revit software, focused on modeling Mechanical, Electrical, and Plumbing (MEP) systems within a building information modeling (BIM) environment. It allows users to create

3D models of MEP systems including ductwork, piping, electrical conduits, and equipment. coordinate them with other architectural & structural models.

Revit Structure:



Revit Structure is a software application specifically designed for structural engineering and design within the Revit Building Information Modeling (BIM) platform.

It allows users to create 3D structural models, generate documentation, and manage project information.



NO.1 TRAINING & PLACEMENT UNIT

Bommanhalli & Madiwala - Bangalore

AN ISO 9001:2015 CERTIFIED COMPANY[®]
CAD DESK
ITDesk
Where Success Begins
SINCE 2007



CONTENT OF THE BIM CAD COURSE PROGRAM

AutoCAD 2d/3d:

- AutoCAD Commands, Use of mouse and keyboard, File extensions, Limits (Li), Units (UN), selection, Views.
- 2d drafting: Drawing toolbar, Point (Po), Co-ordinate system, Line (L), Construction Line (XL), Polyline (PL), Ray, Point style.
- Circle (C), Ellipse (EL), Arc (A), Polygon (POL), Rectangle (Rec)
- Spline (SPL), Divide (Div), Measure (Mea), Donut (Do), Hatch (H), etc.
- Drafting Setting Tool bar
- Modifying tool bar
- Editing tool bar
- Annotations
- Styles manager
- Layer
- Properties
- Tool Palettes
- Parametric constraints
- Linking & Extraction
- Plotting
- 3d Modeling tools
- Solid editing tools

Sketch Up

- Student will be starting from the Interface of Sketch up - Zoom, Pan and rotate.
- Understanding the XYZ axis
- Selecting toolbars
- Applying templates
- Drawing basic geometric shapes
- Discovering layers
- Measuring items inside Sketch Up
- Simple Array techniques
- Rotating objects
- Scale fractional and relative
- Making components & groups
- Re-loading components
- Creating a digital warehouse
- Modeling techniques
- Using Push Pull
- Intersecting Geometry

V-Ray

- Generate basic materials glass, thin glass, solid glass, frosted glass 2. metal 3. gold 4. plastic & 5. Others
- Texture, materials
- Project 1 exterior view with V-Ray sun light
- Project 2 exterior view with V-Ray sun light & Render setting
- Project 2 exterior night view with V-Ray sun light & free light.
- Complete night scene
- Interior light Introduce
- Interior light, V-ray light & Work on materials.
- Complete render setting
- Day scene, night scene both views
- Post production work on Exterior view
- Post production work on Interior view

NO.1 TRAINING & PLACEMENT UNIT

Bommanhalli & Madiwala - Bangalore

AN ISO 9001:2015 CERTIFIED COMPANY[®]
CAD DESK
ITDesk
Where Success Begins

SINCE 2007



CONTENT OF THE BIM CAD COURSE PROGRAM

REVIT ARCH.

- Starting of project template
- Tool palettes
- Project units
- Dimensions
- Levels, Create grids & Edit grids
- Wall shapes, draw panel, Wall joins, Working with grids, Drawing plans
- Modifying commands, move, copy, paste, similar rotate, array, scale, trim / extend
- Doors, Windows, Component, managing views, Annotation command
- Model Text, model line
- Floor, Editing material in floor
- Floor properties
- Roofs, Openings
- Roof by soffit, fascia, gutter
- Editing material in roof. Join/unjoin roofs
- Openings, multiple floor shaft
- Ceiling, Lighting, External & Internal
- Curtain walls
- Stairs, Ramp, Railing
- Rooms, area, schedule, material takeoff, Detailing
- massing, Sheet
- Visibility & graphics
- Site Design
- Legend, In-place families
- Family creation
- Introduction to new conceptual mass
- Short reminder of all commands
- Project work

REVIT MEP

- REVIT MEP starts with Interface of MEP, Working with files, Working with views, File concepts
- Opening of Revit MEP Project
- System tab, HVAC & Mechanical
- Systems Tab - Plumbing And Piping
- Systems Tab - Electrical
- Linked CAD Files - Elevations & Floor Plans
- Room Bounding objects, Creating Spaces, Space Separation Boundaries, Modifying Spaces, Space Tags, Area And Volume Calculations.
- Graphic Overrides, Checking Systems, System Inspector, Duct Sizing, Room Color fills, Creating Zoning, Adding HVAC Equipment's
- Mechanical Piping System, Pipe Fittings, Filters
- Electrical Components - Lighting Fixtures
- Electrical Components - Electrical Devices, Creating Power Circuits, Creating Switch Systems
- Conduit, Cable Tray
- Creating Plumbing views, Creating Fixture, Pipe Schedules etc
- Placeholder Pipes, Pipes, Parallel Pipes, Modifying Plumbing Fixtures.

REVIT STRUCTURE

- Introduction of foundation, Isolated footing, & Wall foundation,
- Introduced to concrete & steel column, Modeling concrete column, Placing column,
- Beam, Introduced to concrete & steel beams, Concrete arc beam, Draw beams
- Introduced to slab, Draw a slab using boundary line, Type properties of slab, Edit slab property,
- Introduced to reinforcement, Reinforcement in column & beam, Wall reinforcement, Stirrup reinforcement, Introduction to cover & editing cover
- Column Rebar, Column Covering, Beam Rebar, Beam covering
- Truss & Insert Tab
- Schedule, Beam schedule, Column Schedule
- Detailing, Callout views, Duplicate view, drafting & symbols
- Visibility & Graphics
- Fabric Reinforcement
- Legend, in place families & family creation

NO.1 TRAINING & PLACEMENT UNIT

Bommanhalli & Madiwala - Bangalore

AN ISO 9001:2015 CERTIFIED COMPANY[®]
CAD DESK
ITDesk
Where Success Begins
SINCE 2007



MASTER CAD BIM – PLACEMENT COURSE FEE STRUCTURE

SL.No.	5 Course Program	6 Course Program	7 Course Program
1	AutoCAD	AutoCAD	AutoCAD
2	Sketch up	Sketch up	Sketch up
3	V-Ray	Enscape	Enscape
4	Revit Arch.	Revit Arch.	Revit Arch.
5	Revit MEP	Revit MEP	Revit MEP
6	-	Revit Structure	Revit Structure
7	-	-	Quantity Take off
Actual Course Fee	54,500/-Rs	67,500/-Rs	74,000/-Rs
Final Course Fee (2 EMI)	40,500/-Rs +2500/-Rs Books Fee	46,500/-Rs + 3500/-Rs Books Fee	52,000/-Rs + 4000/-Rs Books Fee
	1st EMI: 24,500/-Rs 2nd EMI: 16,000/-Rs Books Fee: 2500/-Rs	1st EMI: 28,500/-Rs 2nd EMI: 18,000/-Rs Books Fee: 3500/-Rs	1st EMI: 30,000/-Rs 2nd EMI: 22,000/-Rs Books Fee: 4000/-
Final Course Fee (1 EMI)	40,000/-Rs Books Fee Incl.	44,500/-Rs Books Fee Incl.	51,000/-Rs Books Fee Incl.

Note: • All the above discounts are applicable for the Offline Students, Passout after 2022
• There will be no change in the course program structure once receipt is generated
• Incase of any career gap, arrears / backlog meet the management for guidance.

NO.1 TRAINING & PLACEMENT UNIT

Bommanhalli & Madiwala - Bangalore

AN ISO 9001:2015 CERTIFIED COMPANY[®]
CAD DESK
ITDesk
Where Success Begins
SINCE 2007

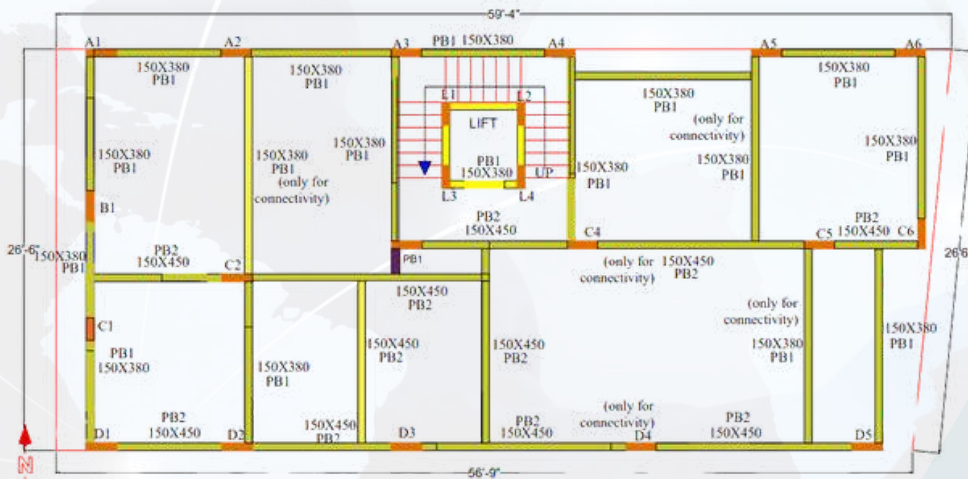


ADDITIONAL IMPORTANT THINGS FOR INTERVIEW & CAREER

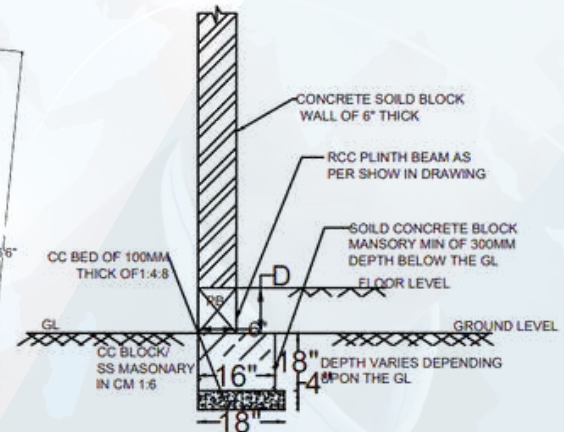
- Student gains additional knowledge on structural designs & respective terminology
- Students will also be given knowledge on practical drawings beginning from foundation key plans, columns, beams, slab, staircase, etc.
- Practical drawings shown with Vastu, Setback, Carpet area
- Core fundamentals of Civil Engineering
- Tools & Terminology of Interior Design

With the knowledge on Architecture, Interior, Exterior, HVAC, Plumbing & Structural. Student can gain the complete knowledge on Building Information

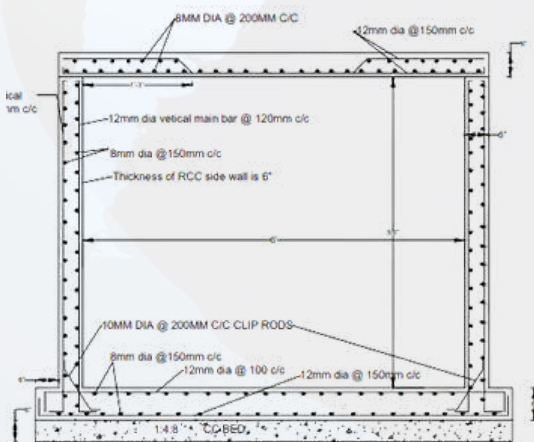
SAMPLE REAL TIME EXECUTED DRAWINGS



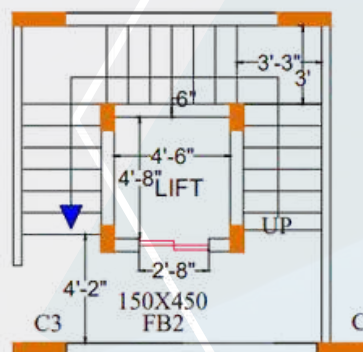
Key Plan for Plinth Beam



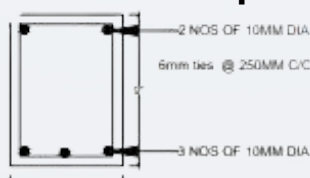
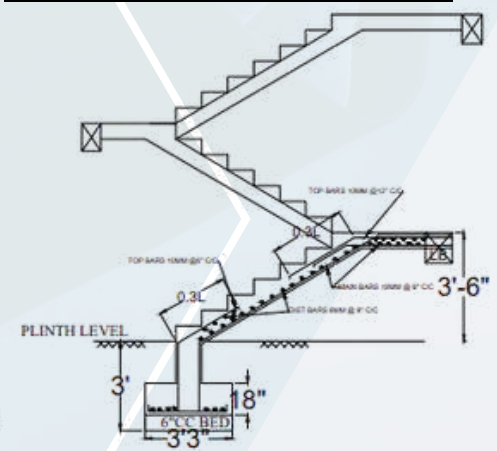
**Typical Section Reinforcement
Details for Pb1 & Pb2 beams**



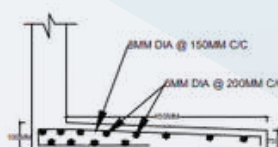
Reinforcement Details Sump



Key Plan for staircase & Reinforcement Details



Typical Cross Section of RCC Chejja



NO.1 TRAINING & PLACEMENT UNIT

Bommanhalli & Madiwala - Bangalore

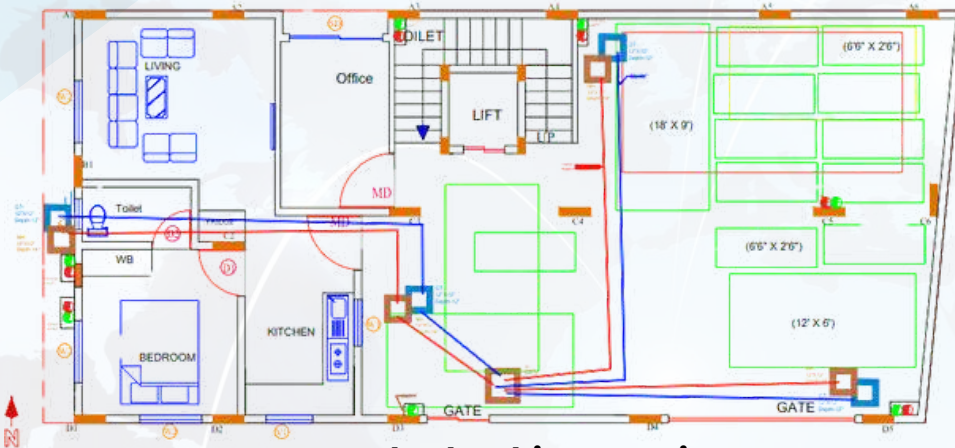
AN ISO 9001:2015 CERTIFIED COMPANY[®]
CAD DESK
ITDesk
Where Success Begins
SINCE 2007



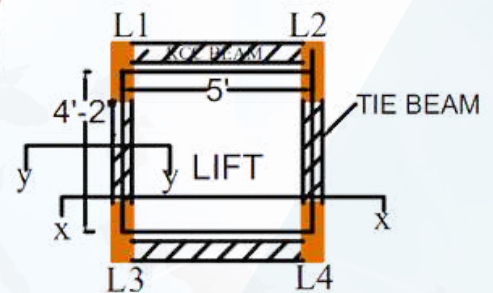
ADDITIONAL IMPORTANT THINGS FOR INTERVIEW & CAREER

With the knowledge on Architecture, Interior, Exterior, HVAC, Plumbing & Structural. Student can gain the complete knowledge on Building Information

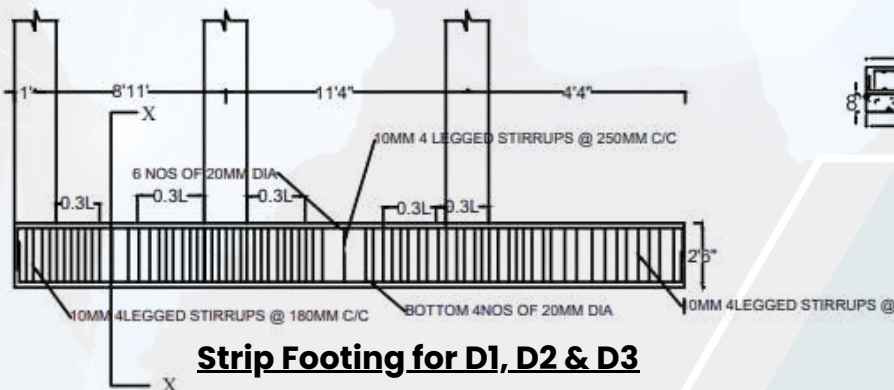
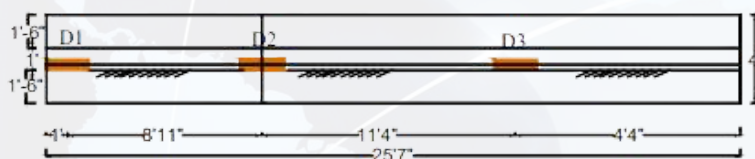
SAMPLE REAL TIME EXECUTED DRAWINGS



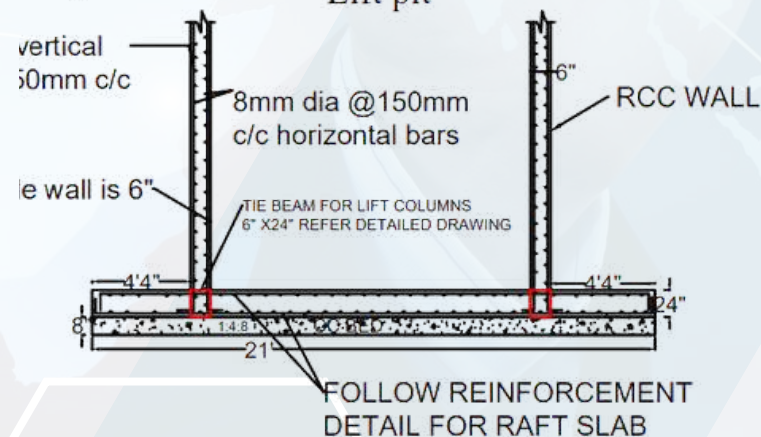
Sample Plumbing Drawing.



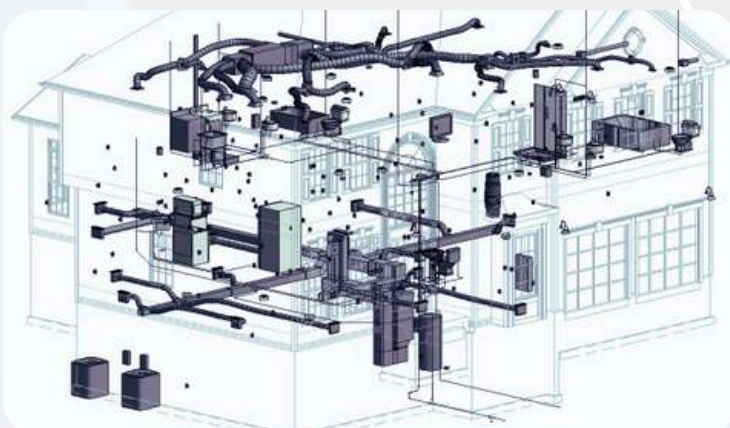
Lift pit



Strip Footing for D1, D2 & D3



Section for Columns - Sample



NO.1 TRAINING & PLACEMENT UNIT

Bommanhalli & Madiwala - Bangalore

SAMPLE BIM MODELING PROJECTS OF OUR STUDENTS

AN ISO 9001:2015 CERTIFIED COMPANY[®]

CAD DESK

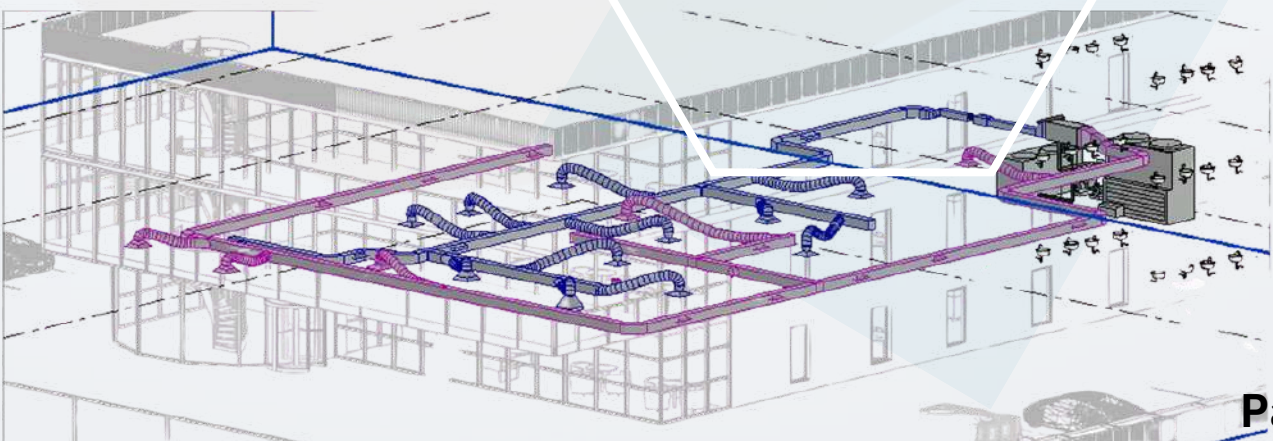
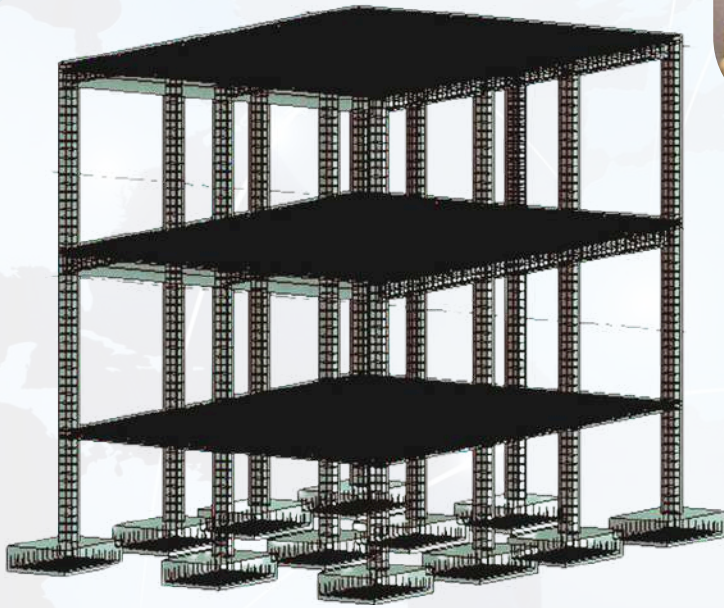
ITDesk

Where Success Begins

SINCE 2007



Created by: Shaik Imtiaz Ali
ID: 8419 / 159
Exterior Design - 5 Star Hotel
Interior & Arch. Bim models



NO.1 TRAINING & PLACEMENT UNIT

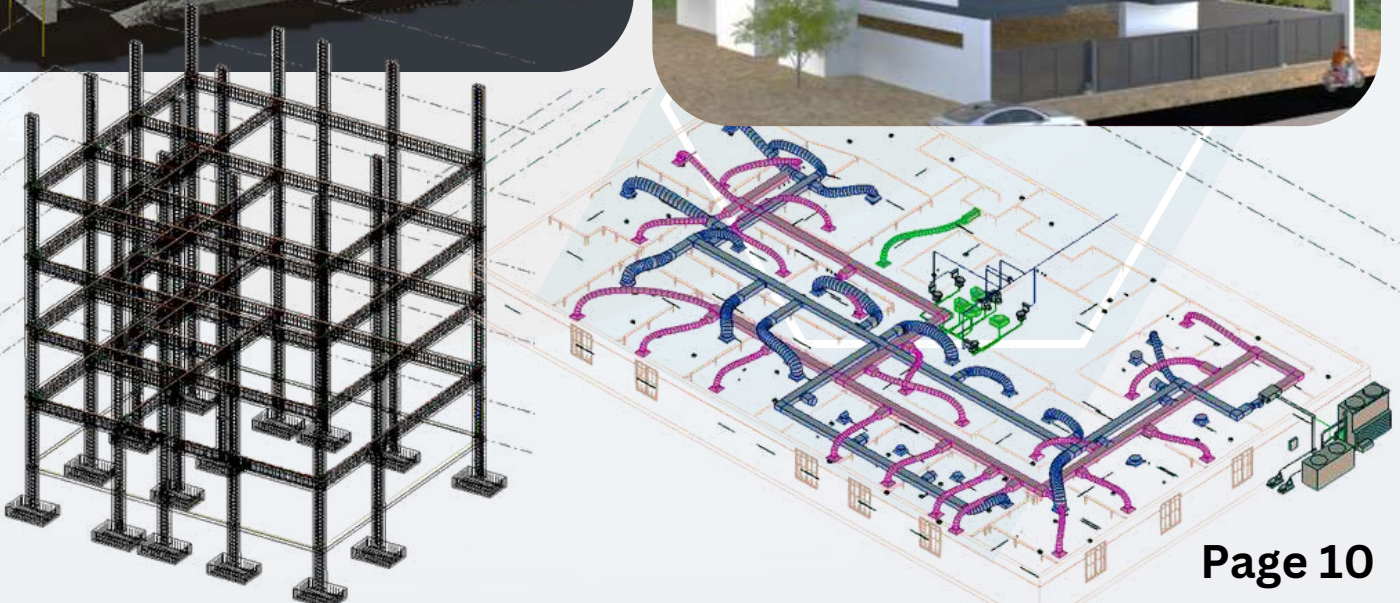
Bommanhalli & Madiwala - Bangalore

AN ISO 9001:2015 CERTIFIED COMPANY[®]
CAD DESK
ITDesk
Where Success Begins
SINCE 2007



SAMPLE BIM MODELING PROJECTS OF OUR STUDENTS

Created by: Gali Preethika
ID: 8418 / 56
Interior, Architecture
Structural, MEP - BIM Models



NO.1 TRAINING & PLACEMENT UNIT

Bommanhalli & Madiwala - Bangalore

AN ISO 9001:2015 CERTIFIED COMPANY[®]
CAD DESK
ITDesk
Where Success Begins
SINCE 2007



SAMPLE BIM MODELING PROJECTS OF OUR STUDENTS

Created by: Golla Abishek Yadav

ID: 8418 / 60

Interior, Architecture

Structural, MEP - BIM Models



NO.1 TRAINING & PLACEMENT UNIT

Bommanhalli & Madiwala - Bangalore

AN ISO 9001:2015 CERTIFIED COMPANY[®]
CAD DESK
IT Desk
Where Success Begins
SINCE 2007



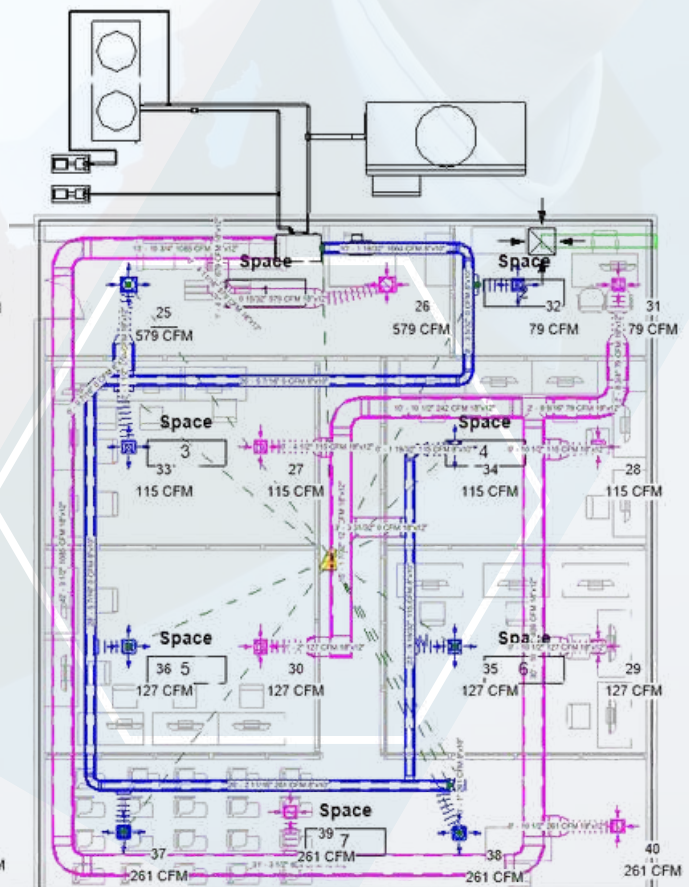
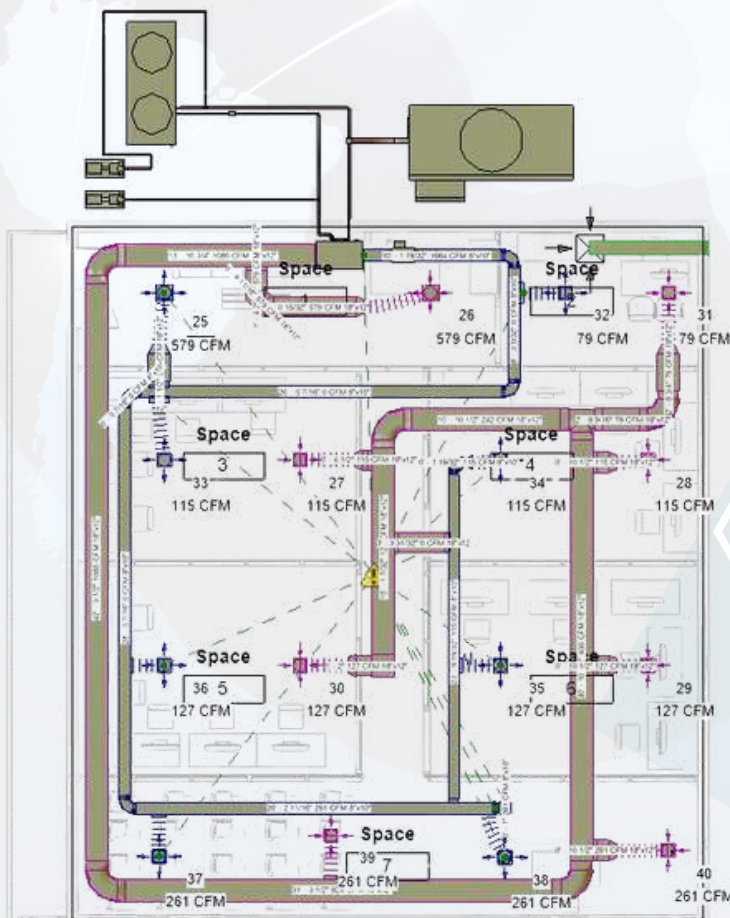
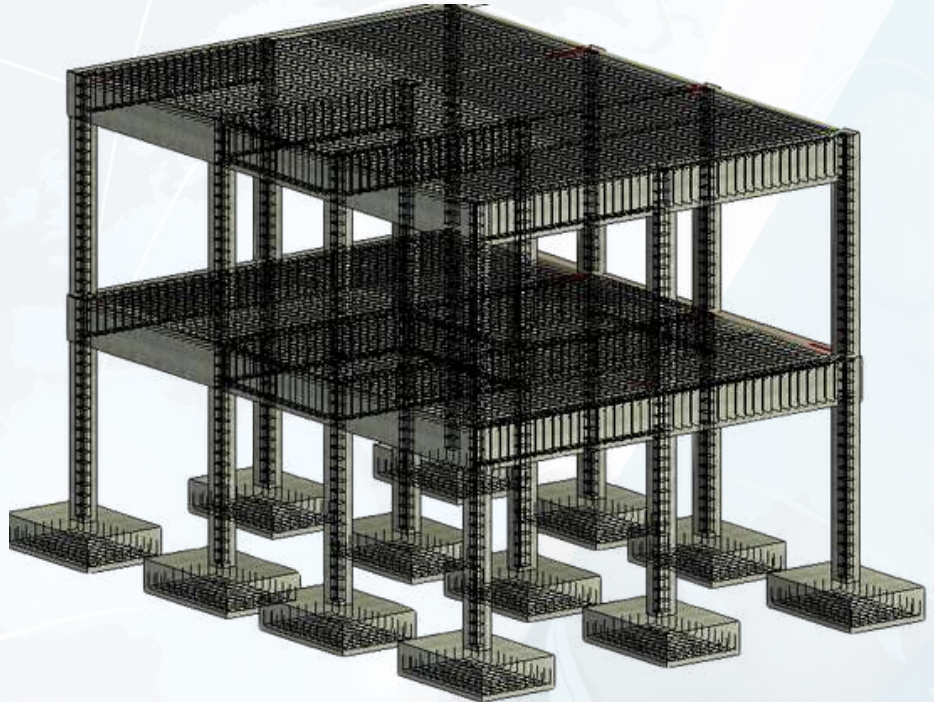
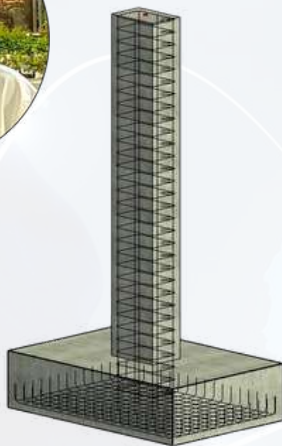
SAMPLE BIM MODELING PROJECTS OF OUR STUDENTS

Created by: Golla Abishek Yadav

ID: 8418 / 60

Interior, Architecture

Structural, MEP - BIM Models



NO.1 TRAINING & PLACEMENT UNIT

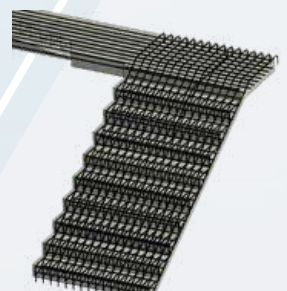
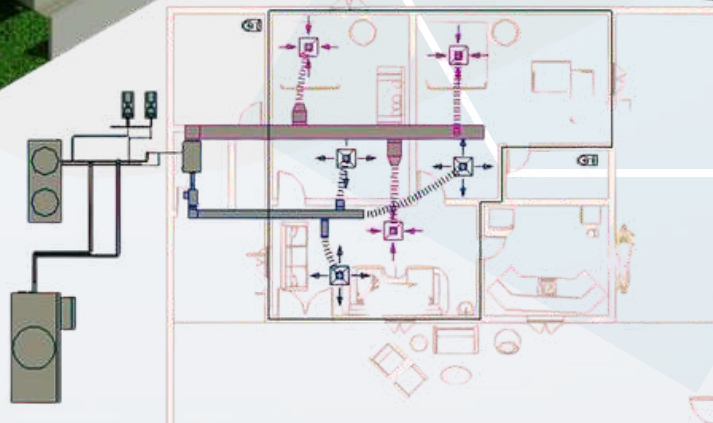
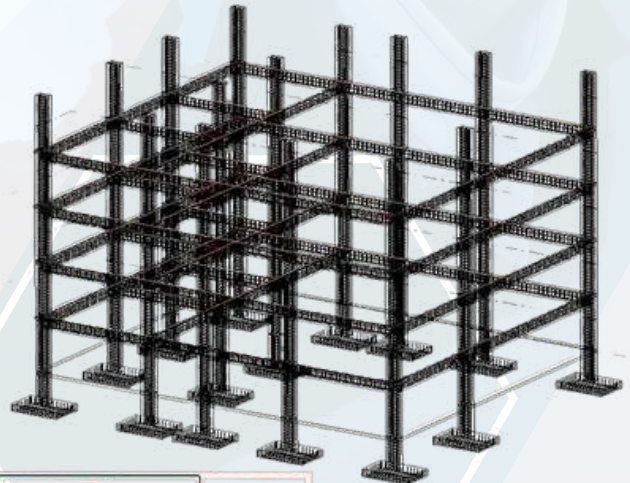
Bommanhalli & Madiwala - Bangalore

AN ISO 9001:2015 CERTIFIED COMPANY[®]
CAD DESK
IT Desk
Where Success Begins
SINCE 2007



SAMPLE BIM MODELING PROJECTS OF OUR STUDENTS

Created by: Thalluri Reshma
ID: 8418 / 62
Interior, Architecture
Structural, MEP - BIM Models



NO.1 TRAINING & PLACEMENT UNIT

Bommanhalli & Madiwala - Bangalore

AN ISO 9001:2015 CERTIFIED COMPANY[®]
CAD DESK
ITDesk
Where Success Begins
SINCE 2007



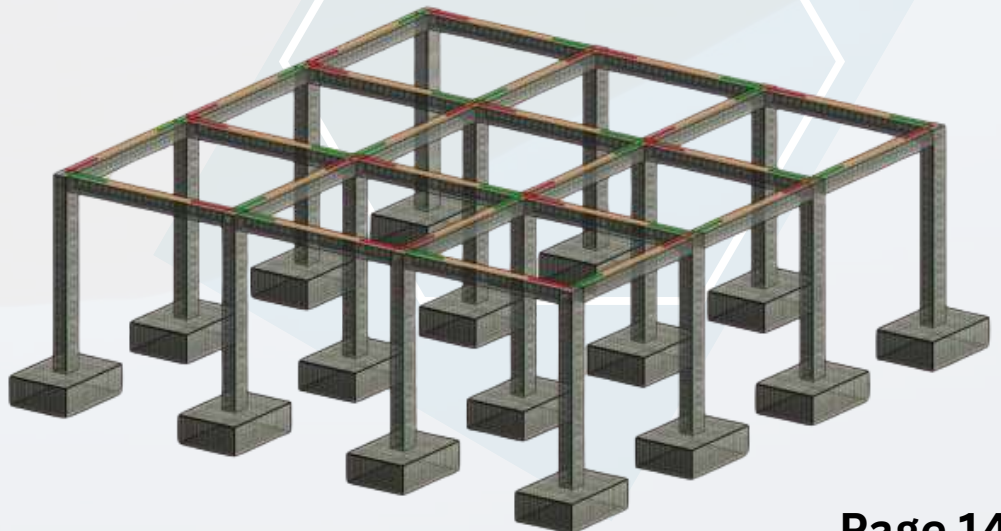
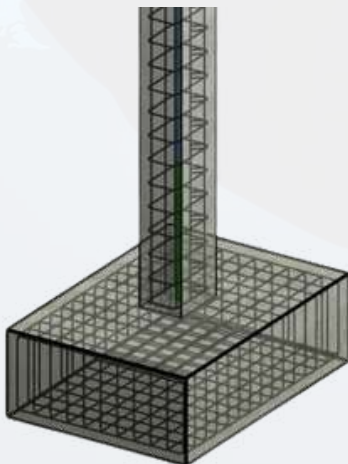
SAMPLE BIM MODELING PROJECTS OF OUR STUDENTS

Created by: N Venu Madhava

ID: 8418 / 61

Interior, Architecture

Structural, MEP - BIM Models



NO.1 TRAINING & PLACEMENT UNIT

Bommanhalli & Madiwala - Bangalore

AN ISO 9001:2015 CERTIFIED COMPANY[®]
CAD DESK
ITDesk
Where Success Begins
SINCE 2007



OUR PLACEMENT PARTNERS



MICRON ELECTRICALS



3D CONCEPT



IVORY SENSE



UNIT ALPHA



ELEMENT INFOMATICS



EMATRIX ENGG. LTD



PASOLITE



SOLID SYSTEMS



CONCEPT ENGINEERING



ROYAL LINKS



ENERGYAN LTD



CALIBER PVT. LTD



BAJAJ CAPITAL



VERVEE COURTURE



ENCLAVAR BUILDERS



**ADARSH CONTROL
AUTOMATION**



SHATHI FACADE'S



VARSHINORA DESIGN

**FOR MORE DETAILS ABOUT OUR
PLACEMENT PARTNERS - PLEASE
VISIT THE BELOW WEBSITE LINK**
<https://cadenggr.com/placement-services>



NO.1 TRAINING & PLACEMENT UNIT

Bommanhalli & Madiwala - Bangalore

AN ISO 9001:2015 CERTIFIED COMPANY[®]
CAD DESK
ITDesk
Where Success Begins
SINCE 2007



OUR PLACEMENT PARTNERS



ARCADIS



XNG AUTOMATION



NAUVATA ENGINEERING



NEW FIELD ENGINEERING



BHILWARA
INFOTECHNOLOGY LTD

BHILWARA INFOTECHNOLOGY



PINNACLE



STEEL KRAFT



ELEGANZ INTERIORS



MORPHLE LABS



CREATIVE TECHNOLOGY



SMART QUICK VENTURES



SANCTUM TECHNOLOGIES



GENESIS IT INNOVATIONS



CEA ENGG. AUTOMATION



STAR SWITCH GEARS



QuadGen
WIRELESS SOLUTIONS

QUAD GEN

**FOR MORE DETAILS ABOUT OUR
PLACEMENT PARTNERS - PLEASE
VISIT THE BELOW WEBSITE LINK**

<https://cadenggr.com/placement-services>



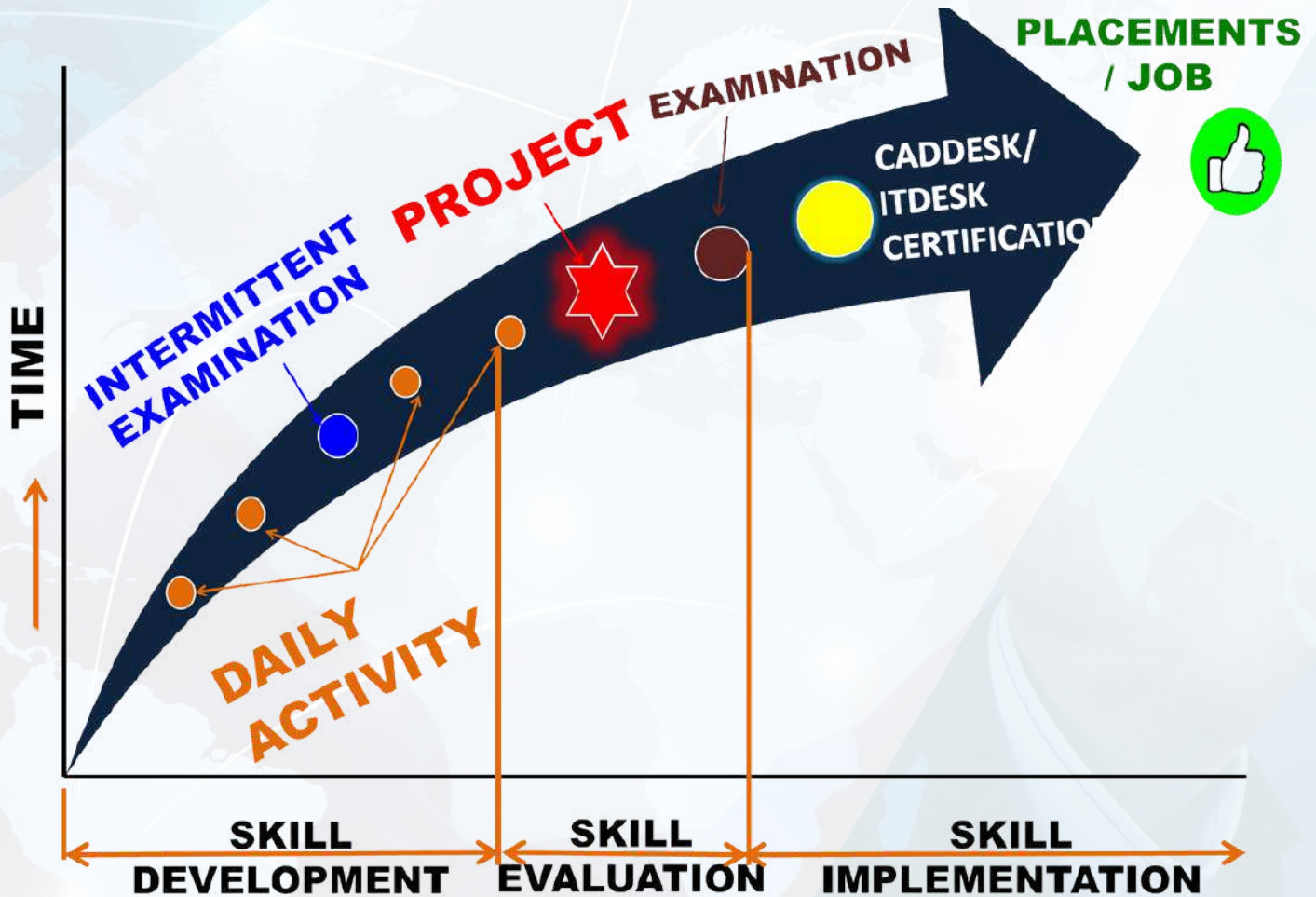
NO.1 TRAINING & PLACEMENT UNIT

Bommanhalli & Madiwala - Bangalore

AN ISO 9001:2015 CERTIFIED COMPANY[®]
CAD DESK
ITDesk
Where Success Begins
SINCE 2007



OUR POWERFUL PLACEMENT STRATEGY



- 100+ ACTIVITIES ON VARIOUS SOFTWARES
- AMPLE AMOUNT OF PRACTICE TIME
- CAD & IT - SPEED UP EXAMINATION
- CREATIVE & INNOVATIVE PROJECTS
- TECHNICAL & PRACTICAL SESSIONS
- CAREER AWARENESS SESSIONS
- COMPLETE & CLEAR RESUME
- MULTIPLE INTERVIEW OPPORTUNITIES

NO.1 TRAINING & PLACEMENT UNIT

Bommanhalli & Madiwala - Bangalore

AN ISO 9001:2015 CERTIFIED COMPANY[®]
CAD DESK
ITDesk
Where Success Begins
SINCE 2007



GLIMPSE OF OUR SESSIONS

Resume preparation Sessions:



Students Examination:



Technical Sessions:



NO.1 TRAINING & PLACEMENT UNIT

Bommanhalli & Madiwala - Bangalore

AN ISO 9001:2015 CERTIFIED COMPANY[®]
CAD DESK
IT Desk
Where Success Begins

SINCE 2007



GLIMPSE OF OUR PLACED STUDENTS



FOR MORE DETAILS CLICK HERE: <https://cadenggr.com/placement-services>

Click above link for more Placed students & Placement Partners



<https://caddeskbangalore-bommanhalli.com/placement-category>



+91 - 80500 91122
+91 - 80500 41122



Page 19

NO.1 TRAINING & PLACEMENT UNIT

Bommanhalli & Madiwala - Bangalore

EVENTS & CELEBRATIONS

AN ISO 9001:2015 CERTIFIED COMPANY[®]
CAD DESK
IT Desk
Where Success Begins

SINCE 2007



FOR MORE DETAILS CLICK HERE: <https://caddeskbangalore-bommanhalli.com/home>



Click Our Website for Placed students & Partners
<https://cadenggr.com/placement-services>



+91 - 80500 91122
+91 - 80500 41122



Initiative of
Bhaskars Engineering Design & IT Center