

THE CROWNED IN RESILIENCE COLLECTIVE & FOUNDATION



ANNUAL IMPACT REPORT



*Empowering Youth. Healing Communities.
Building Futures.*



Table Of Contents

- 1. A Message from Leadership**
- 2. Who We Are**
- 3. Our Impact at a Glance**
- 4. Program Highlights**
- 5. Community Partnerships**
- 6. Financial Summary**
- 7. Looking Ahead (2026 and Beyond)**
- 8. Board of Directors**
- 9. Thank You & Call to Action**



A Message from Our Founders

2025 was a defining year for the Crowned in Resilience Collective & Foundation (CIRCF) - a year of growth, healing, and hope. We deepened our roots in Washington, DC's Wards 7 and 8, expanding opportunities for young people and families to discover their strength, their voice, and their purpose.

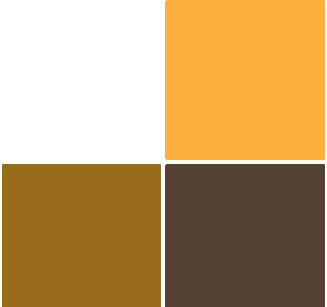
When we founded CIRCF, our vision was simple yet bold: to create a safe space where youth and families could be seen, heard, and supported, where resilience isn't just a response to hardship but a bridge to possibility. This year, that vision came alive through every young person who led with confidence, every family who found healing, and every community partner who stood with us in faith and action.

Through programs like the Youth Leadership & Workforce Academy, the Healing Garden Initiative, and the Roots & Resilience Summer Camp, we watched resilience turn into leadership. We saw youth step into their power as advocates, entrepreneurs, and changemakers. Families worked side by side in the garden, learning that healing can grow in the same soil as opportunity.

We are extremely grateful to our partners, the local foundations, city agencies, faith institutions, and small businesses, who believe in our mission and invest in our community. Your trust and generosity made it possible for CIRCF to provide meals, stipends, mentorship, and career pathways for youth who are building brighter futures not only for themselves but for their neighborhoods.

As we look ahead to 2026, we are more committed than ever to expanding access, amplifying impact, and empowering families to lead from within. The seeds we have planted of healing, of hope, of opportunity are only beginning to bloom.

With gratitude and unwavering faith,
Robin Lawson Atcherson & Jeanine Henderson Arnett
Crowned in Resilience Collective & Foundation



Who We Are



Robin Lawson Atcherson

Co-Founder & Chief Executive Officer

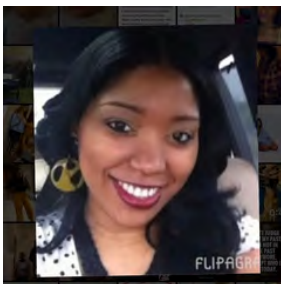
Robin provides overall vision, strategic leadership, and organizational direction, ensuring programs remain mission-driven, equitable, and community-centered. With a strong background in community advocacy, Robin leads partnership development, and long-term sustainability efforts that advance positive outcomes for youth and families.



Jeanine Henderson Arnett

Co-Founder & Chief Operating Officer

Jeanine brings extensive experience in nonprofit operations, grant management, program development, and compliance. She oversees daily operations, program implementation, accountability, and reporting, ensuring high-quality delivery of grant-funded initiatives. Jeanine is responsible for coordinating partnerships, managing staff, and aligning programs with funder requirements and community needs.



Tiffany Lawson

Director of Wellness & Family Engagement

Tiffany serves as Director of Wellness & Family Engagement, leading healing-centered programming that supports youth and families through therapeutic recreation, mindfulness, and emotional wellness practices. She is a social worker who brings expertise in case management, trauma-informed care, and supportive of social-emotional development for diverse participants.



Diallo Arnett

Director of Operations & Workforce Development

Diallo serves as Director of Operations & Workforce Development, overseeing site coordination, logistics, safety protocols, and day-to-day program management across all CIRCF initiatives. Diallo directs CIRC's Facilities Management Training Program and all Trades Workforce Development initiatives, supporting career pathways and workforce readiness for youth and young adults.



Our Impact At a Glance

Since our founding, the Crowned in Resilience Collective & Foundation have emerged as trusted community partners dedicated to empowering youth and families across Washington, DC - particularly in Wards 7 and 8. Through healing-centered programming, leadership development, workforce pathways, and community partnerships, CIRC has reached hundreds of young people and caregivers with resources, mentorship, and opportunity.

By the Numbers

- 100+ youth served through leadership, wellness, and workforce programs
- 40+ youth engaged in paid stipends, job readiness, or skills training
- 75+ families supported through community events and wraparound services
- Community sites activated, including Contee AME Zion Church
- Strong partnerships with local nonprofits, faith institutions, and small businesses


Who We Serve

- Youth ages 11–24, with a focus on middle and high school-aged youth
- Families residing in Washington, DC Wards 7 & 8
- Youth impacted by community violence, trauma, school disengagement, and instability
- Emerging young leaders seeking skills, healing, and opportunity

Our Core Impact Areas

- Healing & Mental Wellness
- Youth Leadership & Advocacy
- Workforce Development & Skills Training
- Environmental Stewardship & Food Access
- Family & Community Engagement

What Changed Because of Our Work

- Youth demonstrated increased confidence, emotional regulation, and leadership skills
 - Participants completed job readiness training, and certifications
 - Families reported stronger connection, support, and access to resources
 - Community spaces were revitalized through youth-led service and stewardship.
- 



Program Highlights

Youth Leadership & Workforce Development Academy

A flagship program equipping young people ages 13–24 with leadership skills, emotional resilience, and career readiness. Youth participate in Power Skills training, Microsoft digital literacy, financial education, and exposure to trades and entrepreneurship.

DC Youth Healing & Leadership Cohort

A trauma-informed, advocacy-centered cohort designed to help youth heal, find their voice, and lead change in their communities. Participants engage in mentorship, civic education, storytelling, and peer leadership.

Roots & Resilience Summer Camp

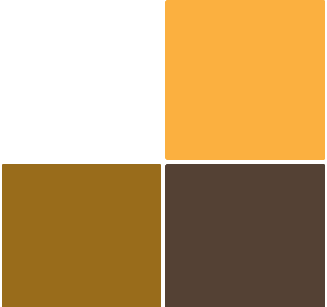
A healing-centered summer experience for youth that blends arts, culture, wellness, and leadership. Campers explore identity, self-expression, teamwork, and resilience in a safe, affirming environment.

Healing Garden Initiative

An innovative green-space program where youth learn sustainability, food access, and environmental stewardship while cultivating raised garden beds and distributing fresh produce to the community.

Facilities Management & Trades Training

Hands-on workforce exposure where youth gain practical experience in maintenance, safety, and project coordination—while contributing real improvements to community institutions.



Community Partnerships

CIRCF's impact is amplified through a robust network of faith institutions, government agencies, educational partners, nonprofits, and private-sector collaborators. These partnerships allow us to deliver holistic, healing-centered, and workforce-aligned programming for youth and families across Washington, DC and the surrounding region.

Community & Faith-Based Anchors

- Contee AME Zion Church
- Loudoun Freedom Center (LFC)
- Jones Memorial U.M.C.
- Kingdom Covenant Global Fellowship

Government & Public Sector

- Office of Neighborhood Safety and Engagement (ONSE)
- DC Department of Employment Services (DOES)
- DC Metropolitan Police Department (MPD)

Education, Workforce & Career

- Northern Virginia Datacenter Academy (NoVA DCA)
- Schmidt's Electrical Enterprises, PC
- Wright's Construction LLC
- Gilbane's Next 150 Construction
- Morgan State University

Mental Health, Wellness & Therapeutic Supports

- Family Therapy Services, LLC
- Dr. Mesha's Chosen Women

Youth Empowerment Organizations

- Melanated Princess Foundation
- Dear Black Girl, Inc.

Research, Data & Systems Change

- Urban Institute
- Microsoft Justice Reform Initiative

Philanthropic & Capacity-Building

- Greater Washington Community Foundation
- Prolific Visions Restoration Foundation
- Wins & Lessons Foundation

Financial Literacy & Professional Development

- Prolific Visions, LLC
- ATS Financial Literacy Foundation

Arts, Culture & Identity-Based

- The Color Well
- Melanin Elevations, LLC
- Melanated Princess Clothing

Financial Summary

| Category | FY 2024 | FY 2025 |
|---|----------------|-----------------|
| Restricted Revenue | \$5,705 | \$20,000 |
| Unrestricted Revenue | \$2,000 | \$4,000 |
| Total Revenue | \$7,705 | \$24,000 |
| Program & Operating Expenses | \$5,870 | \$20,995 |
| • Healing Garden Project | \$4,705 | \$5,000 |
| • Roots & Resilience Summer Camp | \$0 | \$11,345 |
| • Diamonds of DC College Tour | \$0 | \$2,895 |
| Net Operating Surplus | \$1,835 | \$3,005 |

(All figures rounded for clarity).

CIRCF maintains strong fiscal oversight and has demonstrated consistent financial growth and responsible stewardship of restricted grant funds. As reflected in the unaudited financial summary above, the organization increased total revenue from \$7,705 in FY24 to \$24,000 in FY25, driven primarily by successful grant awards supporting program expansion. Despite increased programmatic activity, we have maintained a positive operating surplus, reflecting prudent financial management and organizational sustainability.

Looking ahead to FY 2026, CIRCF is actively diversifying our funding profile through a balanced mix of public grants, private foundation support, and corporate giving initiatives to support strategic program expansion and long-term sustainability. These anticipated resources, combined with existing committed and in-kind support, position CIRC to maintain financial stability, scale impact responsibly, and continue delivering high-quality, free programming for District youth.

Board of Directors



Pastor Mark Thomas – Board Chair

Contee A.M.E. Zion Church

Pastor Mark Thomas brings deep community leadership, faith-based stewardship, and decades of experience serving families in Washington, DC. As Chair, he provides strategic guidance, community accountability, and access to trusted neighborhood networks. His leadership ensures CIRC remains grounded in mission, equity, and community trust while leveraging Contee AME Zion Church as a critical program anchor and safe haven for youth and families.

Keivon Smith – Vice Chair

Founder, Wins & Lessons Foundation

Keivon Smith is a nationally recognized advocate for justice-impacted youth, entrepreneurship, and community transformation. He contributes lived experience, nonprofit leadership, and program innovation expertise to the Board. As Vice Chair, he supports strategic growth, youth leadership development, and sustainability planning, helping CIRC strengthen its prevention-focused and empowerment-based programming.

Bishop Michelle C. Thomas – Board Member

Northern Virginia Datacenter Academy

Bishop Michelle C. Thomas brings visionary leadership, workforce development expertise, and a strong background in education and faith-based organizing. Her experience launching and leading the Northern Virginia Datacenter Academy strengthens CIRCF's focus on career exposure, skills training, and pathways to economic mobility. She provides insight on partnerships, curriculum alignment, and leadership development.

Yvonne Williams – Board Member


ATS Financial Literacy Foundation

Yvonne Williams is a financial education and literacy professional with extensive experience helping individuals and families build economic stability. She contributes financial oversight, fiscal responsibility, and programmatic insight related to financial empowerment. Her guidance strengthens CIRC's governance, financial controls, and youth-focused financial literacy initiatives.

Kanika T. Rosborough – Board Member

Founder, Melanated Princess, LLC & The Melanated Princess Foundation

Kanika T. Rosborough is an entrepreneur and nonprofit leader dedicated to empowering girls and women through education, mentorship, and creative expression. She brings expertise in branding, youth engagement, and culturally responsive programming. Her perspective supports our work with girls, identity development, and confidence-building initiatives.



Looking Ahead



As the Crowned in Resilience Collective looks toward 2026 and beyond, we are entering a phase of intentional growth, deeper impact, and long-term sustainability. Building on strong community trust and proven programming, CIRC is focused on expanding access to healing-centered, leadership-driven, and workforce-aligned opportunities for youth and families across Washington, DC.

Our Strategic Priorities

- Expanding the Youth Leadership & Workforce Development Academy
- Launching focused cohorts for younger teens (ages 11–15) to strengthen prevention and early intervention
- Scaling the Healing Garden Initiative into a sustainable community resource
- Increasing paid opportunities and certifications for youth
- Deepening partnerships across DC, Maryland, and Northern Virginia

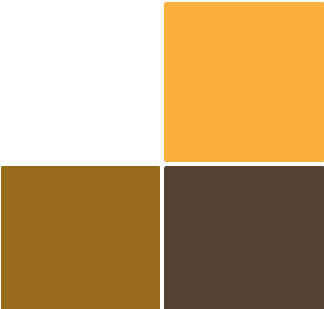
Our vision is bold but grounded: to create pathways where every young person we serve can heal, lead, and thrive.

Investing in Organizational Sustainability

To support growth, CIRC is committed to strengthening internal infrastructure, including:

- Evaluation and data systems
- Staff development and leadership capacity
- Financial systems and operating reserves
- Communications and storytelling

This investment ensures accountability, transparency, and long-term organizational health. The future of CIRC is rooted in hope, built through partnership, and driven by the resilience of the young people we serve.



Call to Action



202-750-1439



www.thecircdc.com



info@thecircdc.com



2223 U Place, SE, Washington, DC 20020

None of this work would be possible without the youth, families, partners, donors, and community members who believe in the mission of the Crowned in Resilience Collective.

Your support fuels:

- Healing for young people impacted by trauma
- Leadership opportunities rooted in dignity and purpose
- Pathways to education, careers, and community transformation

Join us.

- Partner with CIRC
- Volunteer or mentor
- Sponsor a program or youth cohort
- Invest in the future of resilient communities

Together, we are Crowned in Resilience!

