

2019 - PRODUCT GUIDE



100 Series

Desktop workstations

200 Series

Client Tables

300 Series

Edit Workstations

400 Series

Conference Tables

500 Series

Monitor Stands and Walls

600 Series

Equipment Carts

700 Series

Audio Consoles

800 Series

Broadcast Consoles

900 Series

Monitor Arms & Accessories

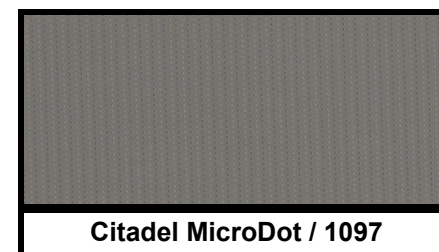
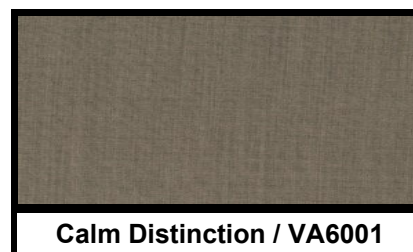
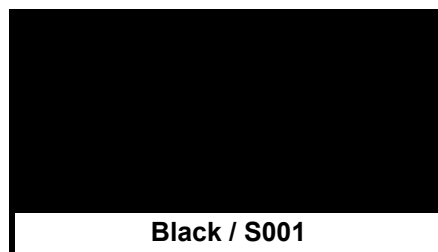
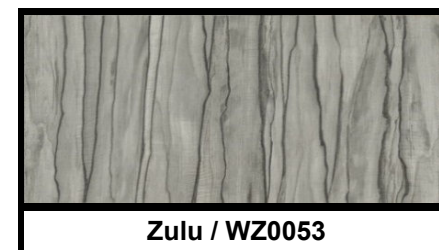
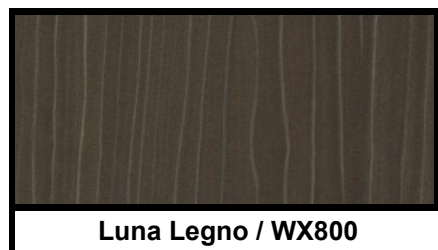
(v1.42)

STUDIO 8 FURNITURE by DeProMark

Integrated Technical Furniture

5901 Bakers Ferry Road NW Atlanta, GA 30336
404-349-9227 info@Studio8Furniture.com

STANDARD STOCK FINISHES



*All Studio 8 Furniture products are available in all the standard finishes of the major manufactures listed below.
Lead times may vary depending on availability.*



STUDIO 8 FURNITURE by DeProMark

Integrated Technical Furniture

5901 Bakers Ferry Road NW Atlanta, GA 30336
404-349-9227 info@Studio8Furniture.com

100 Series Workstations

Standard Features

- Overall countertop dimensions 63" wide X 28 1/2" deep
- Plastic laminate countertop w/ black bumper edging, 1-1/4" thick
- Electric adjustable base, black or white finish, height range from 27" to 48"
- Extruded linear accessory rail, silver anodized
- Cable grommets and under counter cable well with access panel
- 8 Standard countertop profiles, custom options available
- Can be shipped, easy to assemble

Accessory Features

- Articulating monitor arms
- CPU holder
- Plug strip



101-63



102-63



103-63



104-63



105-63



106-63



107-63



108-63

STUDIO 8 FURNITURE by DeProMark

Integrated Technical Furniture

5901 Bakers Ferry Road NW Atlanta, GA 30336
404-349-9227 info@Studio8Furniture.com



100 Series Workstations

Standard Features

- Overall countertop dimensions 84" wide X 28 1/2" deep
- Plastic laminate countertop w/ black bumper edging, 1-1/4" thick
- Electric adjustable base, black or white finish, height range from 27" to 48"
- Extruded linear accessory rail, silver anodized
- Cable grommets and under counter cable well with access panel
- 8 Standard countertop profiles, custom options available
- Can be shipped, easy to assemble

Accessory Features

- Articulating monitor arms
- CPU holder
- Plug strip



101-84



102-84



103-84



104-84



105-84



106-84



107-84



108-84



200 Series Client Tables

Standard Features

- Overall countertop dimensions 63" or 84" wide X 28 1/2" deep
- Plastic laminate countertop with black bumper edging, 1-1/4" thick
- Electronic adjustable base, black or white finish, height range from 27" to 48"
- Cable grommets and under counter wire management
- 8 standard countertop profiles, custom options available
- Can be shipped, easy to assemble

Accessory Features

- | | |
|--|---|
| <ul style="list-style-type: none"> Articulating monitor arms Power/data module Cable well | <ul style="list-style-type: none"> Bookcase/open storage Plug Strip |
|--|---|



201-63



202-63



203-63



204-63



201-84



202-84



203-84



204-84



200 Series Client Tables

Standard Features

- Overall countertop dimensions 29-1/4" wide X 32-3/4" deep
- Plastic laminate countertop with black bumper edging, 1-1/4" thick
- Fixed height base, black or white finish, 29"h
- Cable grommet
- Works with countertop profiles 102-63/84, 106-63/84, 302-63/84, 306-63/84
- Can be shipped, easy to assemble

Accessory Features

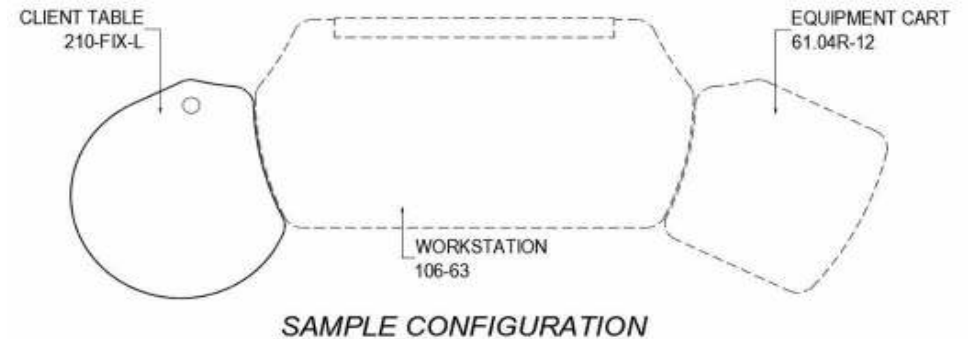
- Articulating monitor arms
- Power/data module
- Plug strip



210-FIX-L



210-FIX-R





300 Series Workstations

Standard Features

- Overall countertop dimensions 63" wide X 32 1/2" deep
- Plastic laminate countertop with black bumper edging, 1-1/4" thick
- Electronic adjustable base, black or white finish, height range from 27" to 48"
- Extruded linear accessory rail, silver anodized
- Cable grommets and under counter cable well with access panel
- 8 standard countertop profiles, custom options available
- Can be shipped, easy to assemble

Accessory Features

- Articulating monitor arms
- CPU holder
- 4RU at 45 deg. angled turret, up to 2 bays
- Plug strip



301-63



302-63



303-63



304-63



305-63



306-63



307-63



308-63



300 Series Workstations

Standard Features

- Overall countertop dimensions 84" wide X 32 1/2" deep
- Plastic laminate countertop with black bumper edging, 1-1/4" thick
- Electronic adjustable base, black or white finish, height range from 27" to 48"
- Extruded linear accessory rail, silver anodized
- Cable grommets and under counter cable well with access panel
- 8 standard countertop profiles, custom options available
- Can be shipped, easy to assemble

Accessory Features

- Articulating monitor arms
- CPU holder
- 4RU at 45 deg. angled turret, up to 3 bays
- Plug strip



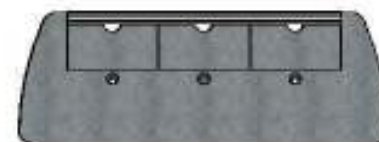
301-84



302-84



303-84



304-84



305-84



306-84



307-84



308-84



302-AT Angled Turret

Standard Features

- 2RU turret, 45 deg angle to fit onto 300-Series workstations
- Standard black finish
- Vent grill in top
- Standard 10-32" rack rail - front only



302-EP End Panels

Standard Features

- Contoured panel to finish off 302-AT turrets
- Laminate finish with black edge
- Left and right side set
- Standard hole pattern with threaded inserts for easy attachment



304-AT Angled Turret

Standard Features

- 4RU turret, 45 degree angle to fit onto 300-Series workstations
- Standard black finish
- Vent grill in top
- Standard 10-32" rack rail - front only



304-EP End Panels

Standard Features

- Contoured panel to finish off 302-AT turrets
- Laminate finish with black edge
- Left and right side set
- Standard hole pattern with threaded inserts for easy attachment



(1) Y-Base with
Stretcher



(2) Double
Arch Base



(3) H-Base

400-96 Conference Tables

Standard Features

- Overall countertop dimensions 96" long X 42" wide X 29" high
- Plastic laminate countertop with black bumper edging, 1-1/4" thick
- 3 standard table base options - white, black or silver finish
- 4 standard countertop profiles, custom options available
- 2 countertop cable grommets - black finish
- Can be shipped, easy to assemble

Accessory Features

- Power/data interface
- Cable well
- Plug strip



4x1-96



4x2-96



4x3-96



4x4-96



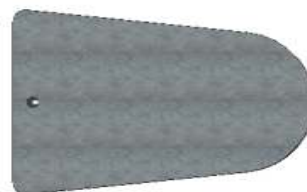
450-00 Huddle Station

Standard Features

- Overall countertop dimensions 60"/72"/84"/96" long X 42" wide X 29" high
- Plastic laminate countertop with black bumper edging, 1-1/4" thick
- Base storage w/ upper raceway, adj. monitor bracket and adj. camera stand
- Pull-out monitor bracket, 15 deg. tilt, up to 55" monitor
- 4 standard countertop profiles, custom options available
- Metal post leg - black / silver / or white powdercoat finish
- Can be shipped, easy to assemble

Accessory Features

- Power/data interface
- Plug strip
- Upgrade bracket for larger monitor



451-xx



452-xx



453-xx



454-xx



460-00 Huddle Qube

Standard Features

- Overall countertop dimensions 22" long X 22" wide X 22 3/4" high
- Black (-01) or White -02) standard finish. Custom finishes available (-03)
- Wireless Qi top surface fast charger
- 2 outlet and 2 USB charging ports
- Recessed sides for working legroom
- Can be shipped, no assembly required

Custom Finishes

Custom finishes are available to match your existing laminate finishes or in wood veneers. Stain samples need to be provided. Contact us for pricing.



STUDIO 8 FURNITURE by DeProMark

Integrated Technical Furniture

5901 Bakers Ferry Road NW Atlanta, GA 30336
404-349-9227 info@Studio8Furniture.com

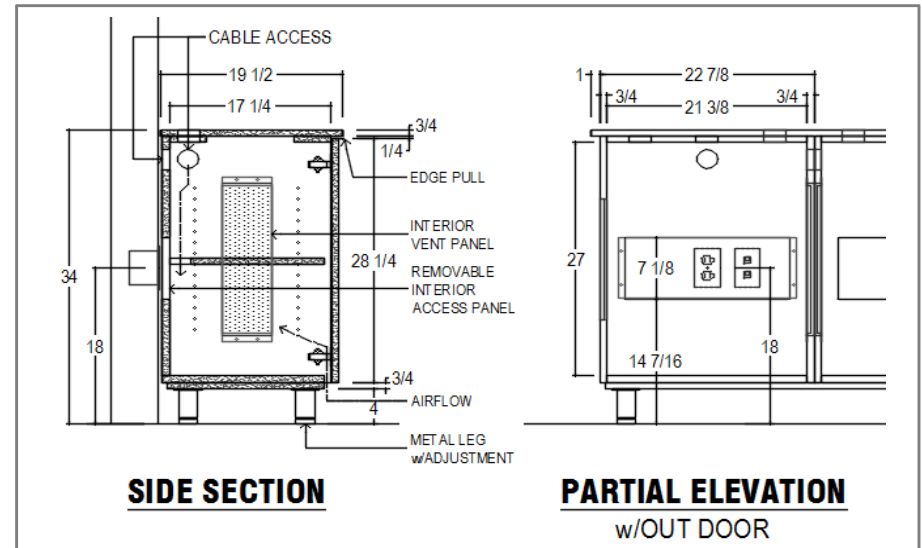
472-00 Credenza 2-Bay

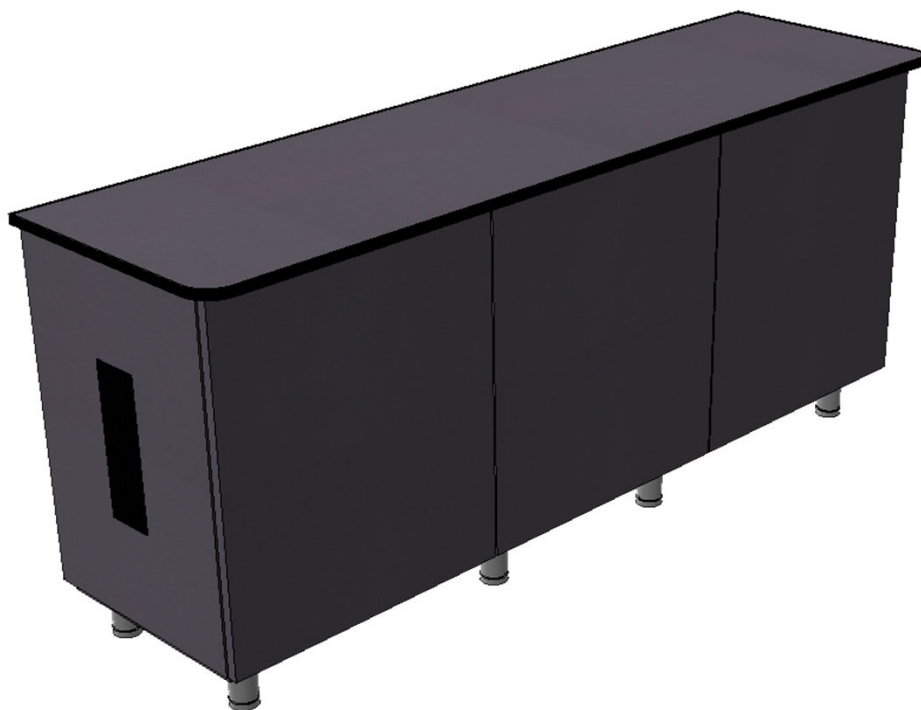
Standard Features

- Overall dimensions 47 3/4" long X 19 1/2" deep X 34" high
- Black (-01) or White (-02) standard finish. Custom finishes available (-03)
- 2 storage bays with adjustable shelf
- Internal access holes and ventilation
- Decorative metal feet with leveling adjustment
- Can be shipped, no assembly required

Custom Finishes

Custom finishes are available to match your existing laminate finishes or in wood veneers. Stain samples need to be provided. Contact us for pricing.





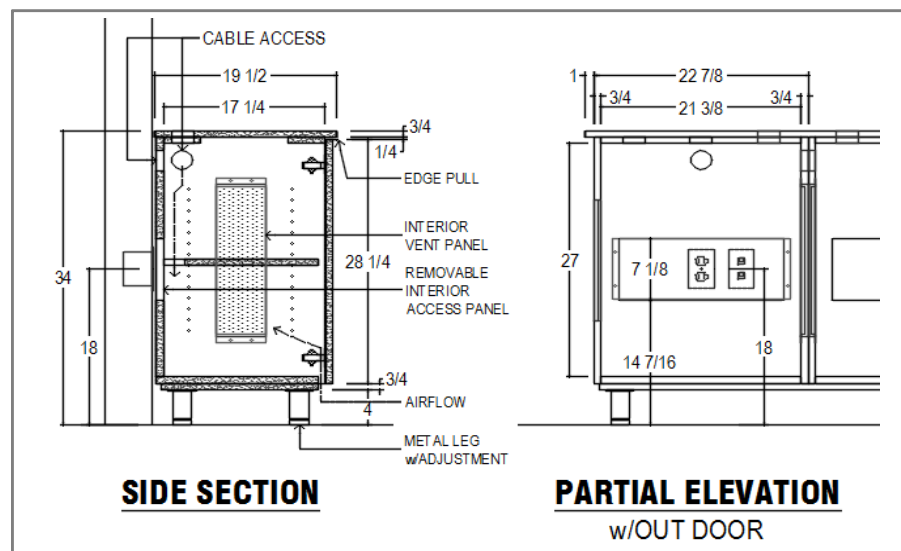
473-00 Credenza 3-Bay

Standard Features

- Overall dimensions 69 3/4" long X 19 1/2" deep X 34" high
- Black (-01) or White (-02) standard finish. Custom finishes available (-03)
- 3 storage bays with adjustable shelf
- Internal access holes and ventilation
- Decorative metal feet with leveling adjustment
- Can be shipped, no assembly required

Custom Finishes

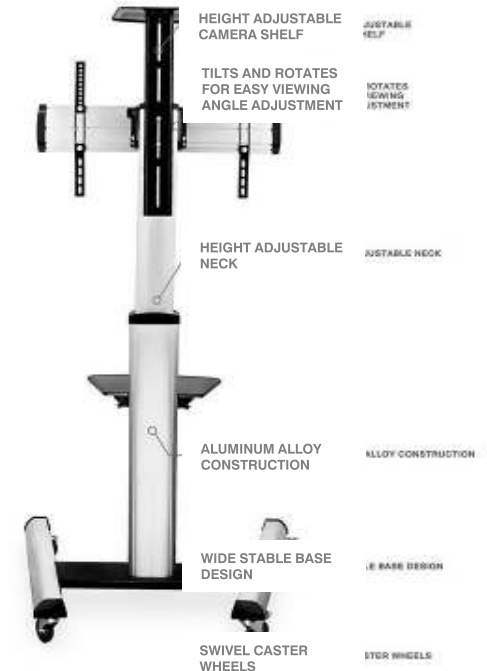
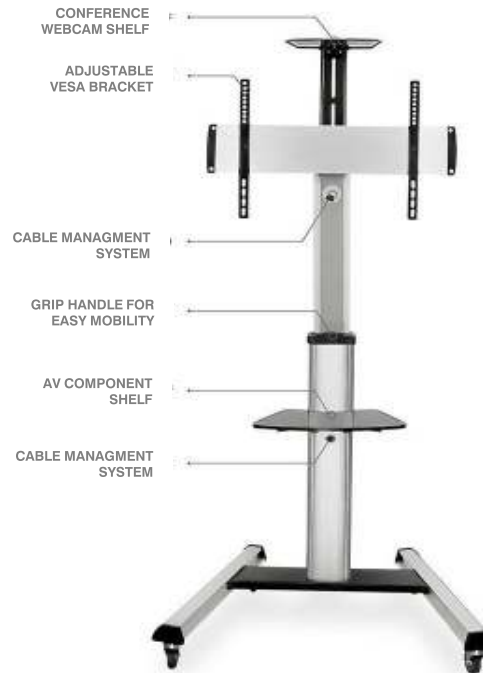
Custom finishes are available to match your existing laminate finishes or in wood veneers. Stain samples need to be provided. Contact us for pricing.



500-01 Monitor Stand

Standard Features

- Overall dimensions 36" wide X 29 5/8" deep X 45 3/8" height - 64 3/8" to center of monitor
- 11 3/4" wide X 5 3/8" deep camera shelf, lockable casters
- Fits flat panel TVs up to 60"- VESA patterns up to 700mm x 400mm
- Extruded vertical column, silver anodized finish
- Cable grommets, internal wire management
- 17"w X 13"d component shelf
- Can be shipped, easy to assemble

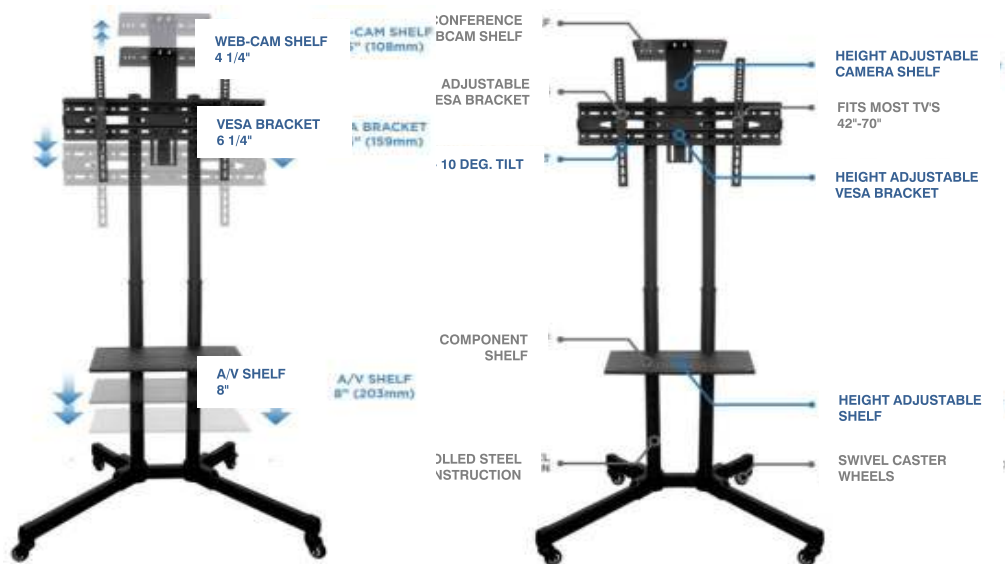




501-01 Monitor Stand

Standard Features

- Overall dimensions 34 1/4" wide X 27" deep X 70" OAH, height adjustable bracket
- 11 3/4" wide X 9" deep adjustable camera shelf above, lockable casters
- Fits flat panel TV's 42" to 70" - VESA patterns up to 600mm x 400mm
- Cold-rolled steel construction, black powder coat finish
- Cable grommets and internal wire management
- 19" wide X 11 1/2" deep component shelf, 8" height adjustment
- Can be shipped, easy to assemble





502-01 Monitor Stand

Standard Features

- Overall dimensions 34 1/4" wide X 27" deep X 70" OAH, height adjustable bracket
- 11 3/4" wide X 9" deep adjustable camera shelf, lockable casters
- Fits flat panel TV's 42" to 70" - VESA patterns up to 600mm x 400mm
- Cold-rolled steel construction, black powder coat finish
- Cable grommets and internal wire management
- 19" wide X 11 1/2" deep component shelf, 8" height adjustment
- Can be shipped, easy to assemble





510-01 Monitor Wall

Standard Features

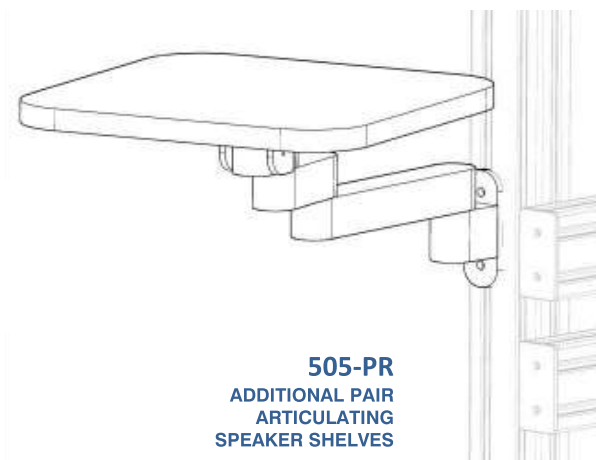
- Overall dimensions 49" wide X 27" deep X 99" OAH, height adjustable bracket
- Leveler feet and rear horizontal cable trough
- Fits flat panel TVs stacked, up to 55" - VESA patterns up to 600mm x 400mm
- Heavy-duty aluminum extrusion, silver or black finish
- 2 adjustable / tilt-forward monitor brackets
- Upgradable to add additional sections
- Can be shipped, easy to assemble

Optional Items

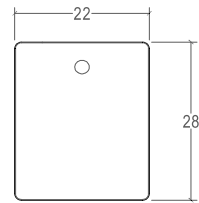
- Additional monitor sections
- Plug strips
- Articulating speaker shelves
- Angle transition brackets



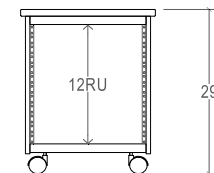
5x0-01
EACH ADDITIONAL
SECTION FOR (2X)
55" MONITORS



505-PR
ADDITIONAL PAIR
ARTICULATING
SPEAKER SHELVES



61.0x-12



600 Series Rack Carts

Standard Features

- Overall countertop dimensions 22" wide X 28" deep X 29" high
- Plastic laminate countertop, black bumper edging, 1-1/4" thick
- Plastic laminate side panels, black edge banding
- Front and rear #10-32 rack rail
- Cable grommets - black finish
- 4 standard countertop profiles, custom options available
- Can be shipped, easy to assemble

Accessory Features

- | | |
|-----------------------------|---------------------|
| ■ Articulating monitor arms | ■ Plug strip |
| ■ Power/data Interface | ■ Rear access panel |



**TOP STYLE
1**



**TOP STYLE
2**



**TOP STYLE
3**



**TOP STYLE
4L**



**TOP STYLE
4R**

STUDIO 8 FURNITURE by DeProMark

Integrated Technical Furniture

5901 Bakers Ferry Road NW Atlanta, GA 30336
404-349-9227 info@Studio8Furniture.com



600 Series Rack Carts

Standard Features

- Overall countertop dimensions 35 1/2" wide X 28" deep X 29" high
- Plastic laminate countertop, black bumper edging, 1-1/4" thick
- Plastic laminate side panel, black edge banding
- Front and rear #10-32 rack rail
- Cable grommets - black finish
- 1/2 bay for CPU or storage
- 4 standard countertop profiles, custom options available
- Can be shipped, easy to assemble

Accessory Features

- Articulating monitor arms
- Plug strip
- Power/data Interface
- Rear access panel



**TOP STYLE
1**



**TOP STYLE
2**



**TOP STYLE
3**



**TOP STYLE
4L**



**TOP STYLE
4R**

STUDIO 8 FURNITURE by DeProMark

Integrated Technical Furniture

5901 Bakers Ferry Road NW Atlanta, GA 30336
404-349-9227 info@Studio8Furniture.com



600 Series Rack Carts

Standard Features

- Overall countertop dimensions 43" wide X 28" deep X 29" high
- Plastic laminate countertop, black bumper edging, 1-1/4" thick
- Plastic laminate side panels, black edge banding
- Front and rear #10-32 rack rail
- Cable grommets - black finish
- 4 standard countertop profiles, custom options available
- Can be shipped, easy to assemble

Accessory Features

- | | |
|---|---|
| <ul style="list-style-type: none"> Articulating monitor arms Power/data Interface | <ul style="list-style-type: none"> Plug strip Rear access panel |
|---|---|



**TOP STYLE
1**



**TOP STYLE
2**



**TOP STYLE
3**



**TOP STYLE
4L**



**TOP STYLE
4R**

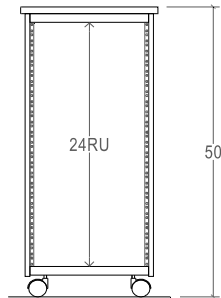
STUDIO 8 FURNITURE by DeProMark

Integrated Technical Furniture

5901 Bakers Ferry Road Atlanta, GA 30336
404-349-9227 info@Studio8Furniture.com



61.0x-24



600 Series Rack Carts

Standard Features

- Overall countertop dimensions 22" wide X 28" deep X 50" high
- Plastic laminate countertop, black bumper edging, 1-1/4" thick
- Plastic laminate side panels, black edge banding
- Front and rear #10-32 rack rail
- Cable grommets - black finish
- 3 standard countertop profiles, custom options available
- Can be shipped, easy to assemble

Accessory Features

- | | |
|-----------------------------|---------------------|
| ■ Articulating monitor arms | ■ Plug strip |
| ■ Power/data interface | ■ Rear access panel |



**TOP STYLE
1**



**TOP STYLE
2**

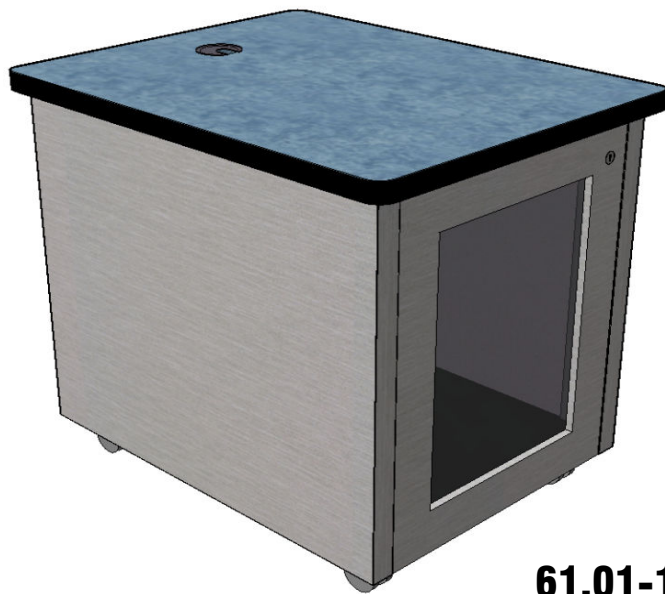


**TOP STYLE
3**

STUDIO 8 FURNITURE by DeProMark

Integrated Technical Furniture

5901 Bakers Ferry Road Atlanta, GA 30336
404-349-9227 info@Studio8Furniture.com



61.01-12-Q

600 Series Quiet Rack Cart

Standard Features

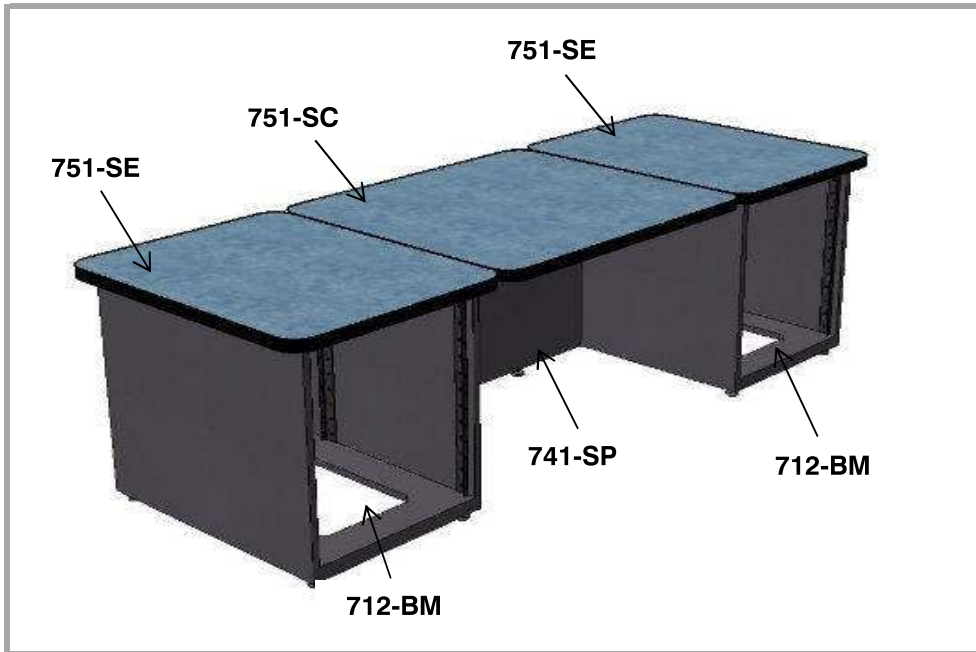
- Overall countertop dimensions 26"w X 38-3/4"d X 29"h
- Plastic laminate countertop, black bumper edging, 1-1/4" thick
- Plastic laminate cabinet finish
- 12RU - F/R rack rail w/square holes for inserts, 3" + 29" set-back
- Front door w/clear plexi panel and rear solid door, w/locks - keyed alike
- Sound proofing, 1-1/2" thk combined acoustic foam & closed cell foam, PVC door gasketing
- Rear mounted 2ru quiet fan kit w/ thermal control, 52-130 CFM, 16-24 dBA
- 2 internal quiet fans, 52 CFM, 18dBA ea
- Auxiliary plug strip and rear service light
- Cable grommets - black finish
- Can be shipped, fully assembled



2ru Rear cooling fans



1-1/2" thk Soundproofing



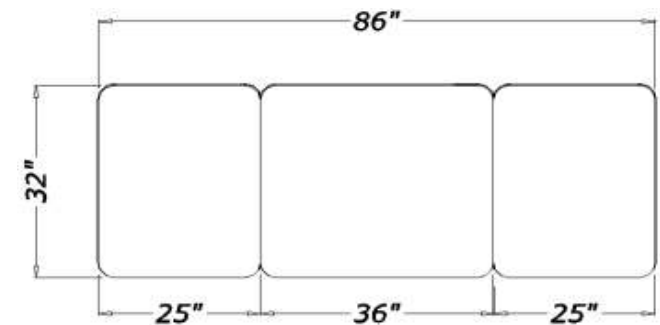
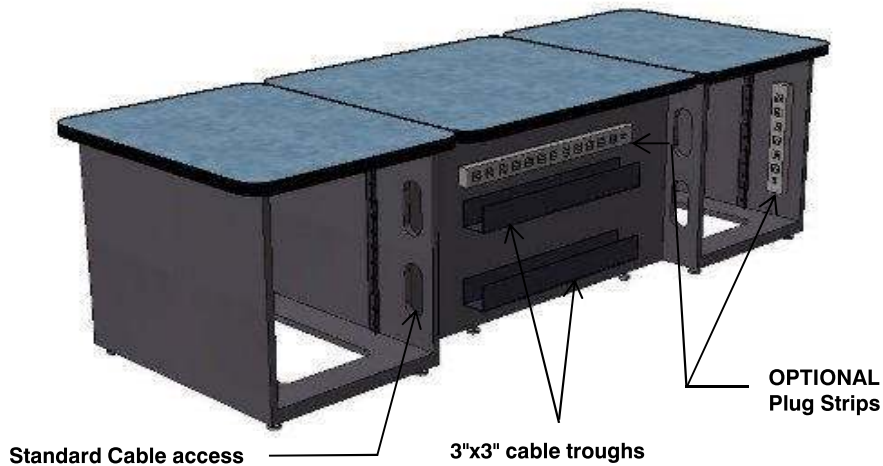
700 Series Audio Console

Standard Features

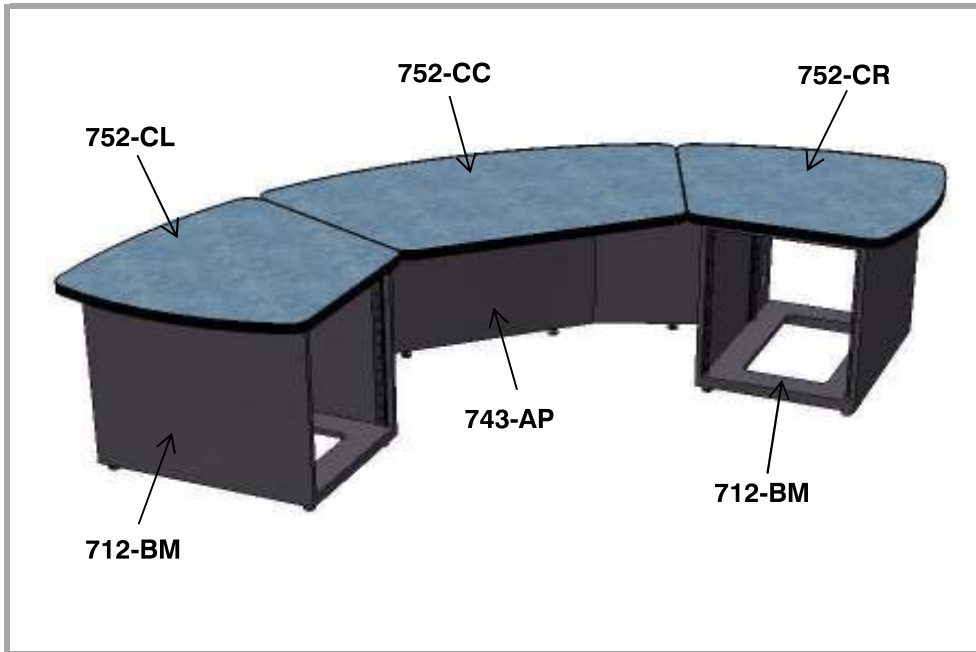
- 3 countertop sections, straight layout, laminate finish black 3mm edge
- 2x 12RU equipment bays at ends, front and rear 10-32" rack rail
- Center modesty panel with 2x 3"x3" cable troughs on back side
- Center top length made to fit audio board length
- Can be configured with center top lowered or cut-in
- Can be shipped, easy to assemble

Accessory Features

- Articulating monitor arms
- Power/data module
- Plug strips



PLAN VIEW



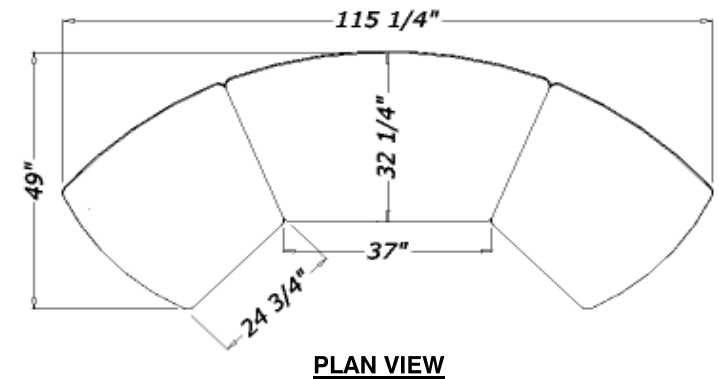
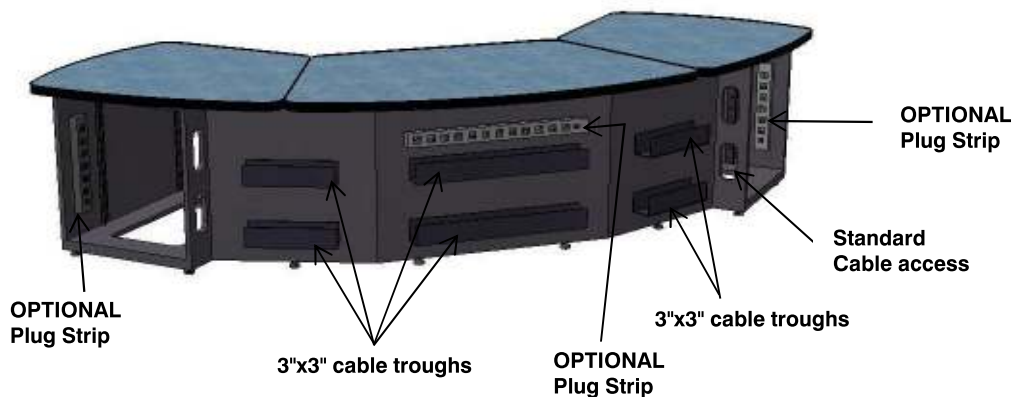
700 Series Audio Console

Standard Features

- 3 countertop sections, curved layout, laminate finish, black 3mm edge
- 2x 12RU equipment bays at ends, front and rear 10-32" rack rail
- Center modesty panel, 6x 3"x3" cable troughs on back side
- Center top length made to fit audio board length
- Can be configured with center top lowered or cut-in
- Can be shipped, easy to assemble

Accessory Features

- Articulating monitor arms
- Power/data module
- Plug strips





704-UM Module

Standard Features

- 8RU turret, 90 degree angle to sit on countertop
- Standard black finish
- Vent grill and cable grommet in top
- Standard 10-32" rack rail - front only
- Optional rear vented panel mounted on rear rail



706-UM Module

Standard Features

- 6RU turret, 90 degree angle to sit on countertop
- Standard black finish
- Vent grill and cable grommet in top
- Standard 10-32" rack rail - front only
- Optional rear vented panel mounted on rear rail



708-UM Module

Standard Features

- 8RU turret, 90 degree angle to sit on countertop
- Standard black finish
- Vent grill and cable grommet in top
- Standard 10-32" rack rail - front only
- Optional rear vented panel mounted on rear rail



712-UM Module

Standard Features

- 12RU Turret, 90 degree angle to sit on countertop.
- Standard Black finish
- Vent grill and cable grommet in top
- Standard 10-32" rack rail - front only
- Optional rear vented panel mounted on rear rail



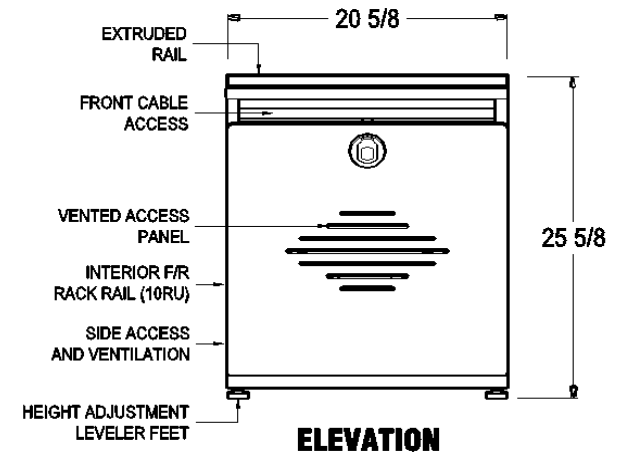
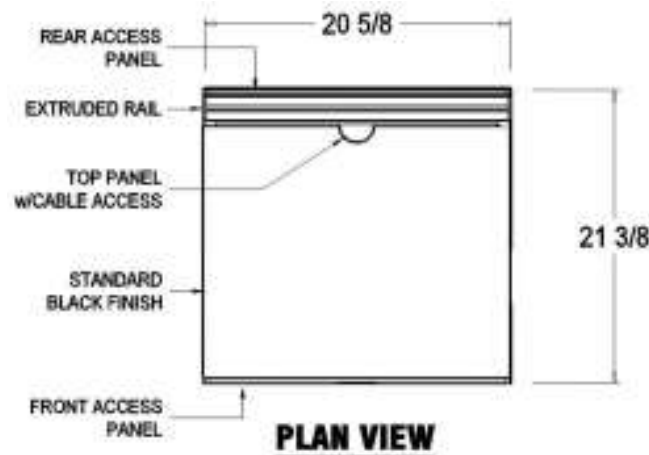
800-B Base Module

Standard Features

- Overall base dimensions 20 5/8" wide X 21 3/8" deep X 25 5/8" high
- Standard black finish with adjustable leveler feet
- Front and rear vented access panels
- Extruded linear accessory rail, silver anodized
- 10RU Front and rear rack rail
- Horizontal utility panel for mounting plug strips or routing cables
- Solid top panel with access for use if not using rack turret above
- Countertop and supports priced as separate items

Accessory Features

- Articulating monitor arms
- Angled rack turret
- End panel
- Plug strip

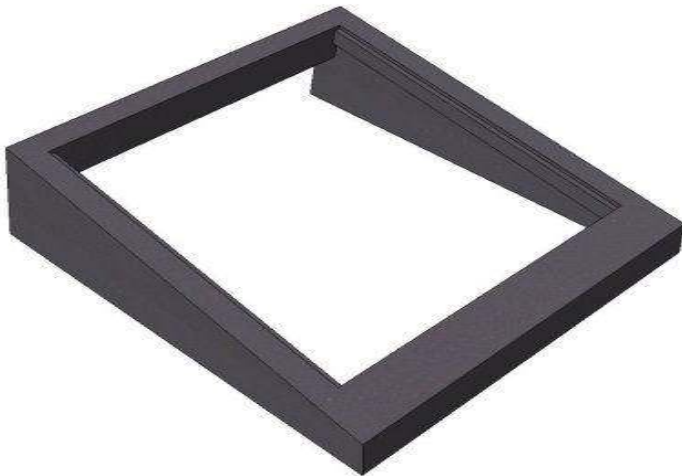




800-SW Switcher Wedge

Standard Features

- Angled wedge for project switcher for use with 800-B base units
- Standard black finish, black bumper edge
- Angle from 5 to 15 degrees or per project requirements
- Made to order per project



800-AW Audio Wedge

Standard Features

- Angled wedge for audio board for use with 800-B base units
- Standard black finish, black bumper edge
- Angle from 5 to 15 degrees or per project requirements
- Supports cleats or 10-32" rack rail, per board mounting requirements
- Made to order per project



804-AT Turret

Standard Features

- 4RU turret, 30 degree angle to fit onto 800-B base units
- Standard black finish
- Vent grill and hinged access in top
- Standard 10-32" rack rail - front only
- Fits up to extruded rail (standard on 800-B base module)



806-AT Turret

Standard Features

- 6RU turret, 30 degree angle to fit onto 800-B base units
- Standard black finish
- Vent grill and hinged access in top
- Standard 10-32" rack rail - front only
- Allows use of extruded rail (standard on 800-B base module)



808-ST Turret

Standard Features

- 8RU turret, 90 degree angle to fit onto 800-B base units
- Standard black finish
- Vent grill and cable grommet in top
- Standard 10-32" rack rail - front only
- Optional rear vented panel mounted on rear rail



812-ST Turret

Standard Features

- 12RU Turret, 90 degree angle to fit onto 800-B base units
- Standard black finish
- Vent grill and cable grommet in top
- Standard 10-32" rack rail - front only
- Optional rear vented panel mounted on rear rail



8xx-TC Transition Corner

Standard Features

- Angled transition corner for use with 800-B base units
- Standard angles - 15, 22.5, 30, 45 - per project specifications
- Rear access panel
- Standard black finish

15 degree angle



815-TC

**22.5 degree
angle**



822-TC

**30 degree
angle**



830-TC

**45 degree
angle**



845-TC

STUDIO 8 FURNITURE by DeProMark

Integrated Technical Furniture

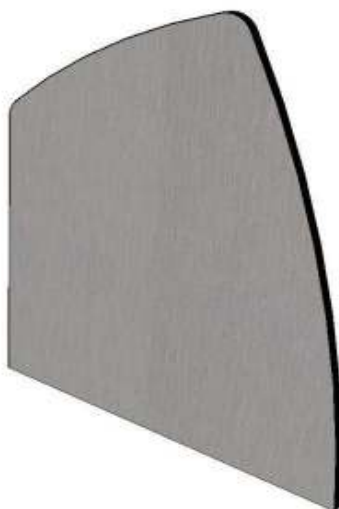
5901 Bakers Ferry Road NW Atlanta, GA 30336
404-349-9227 info@Studio8Furniture.com



800-CT Counter Top

Standard Features

- 18" deep counter top for 800-B base units
- Laminate finish with 3mm black bumper edge
- 3" radius at each corner on finished ends
- Priced per linear foot, cost based on project specifications



800-EP End Panel

Standard Features

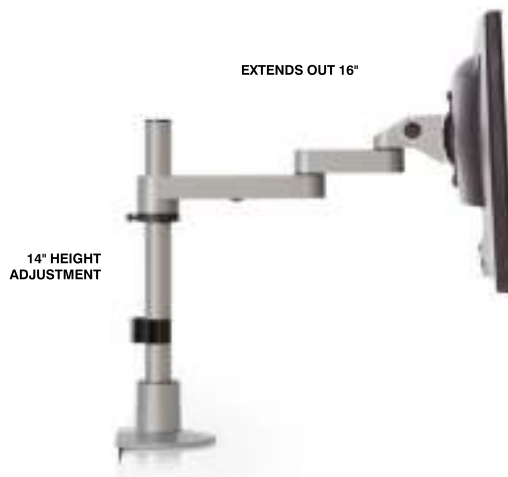
- Contoured panel to finish 800 series base or upper turret
- Laminate finish with black edge
- Single panel - specify left or right end
- Standard hole pattern with threaded inserts for easy attachment
- Custom oversized panels available for additional cost



932-01 Monitor Arm

Standard Features

- Swivel: 360 (left to right)
- Rotate: 360 (landscape to portrait)
- Tilt: 105 (up or down)
- Height adjustable: 14" / Arm extends 16"
- Load capacity 40 lbs
- VESA 75 x 75 or 100 x 100 (mm)
- Black or silver finish
- Cable management to organize and hide cords
- Can be shipped, easy to assemble

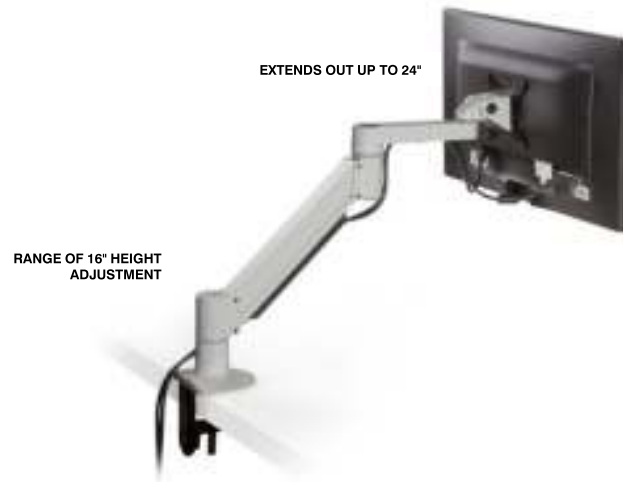




932-02 Monitor Arm

Standard Features

- Swivel: 360 (left to right)
- Rotate: 360 (landscape to portrait)
- Tilt: 105 (up or down)
- Height adjustable: 16" / Extends out up to 24"
- Load capacity, 3 options : A = 2-13lbs / B = 7.5-25lbs / C = 12-31lbs
- VESA 75 x 75 or 100 x 100 (mm)
- Black or silver finish
- Cable management to organize and hide cords
- Can be shipped, easy to assemble



STUDIO 8 FURNITURE by DeProMark

Integrated Technical Furniture

5901 Bakers Ferry Road NW Atlanta, GA 30336
404-349-9227 info@Studio8Furniture.com



934-01 Monitor Arm

Standard Features

- Swivel: 360 (left to right)
- Rotate: 360 (landscape to portrait)
- Tilt: 105 (up or down)
- Height adjustable: 14" pole
- Load capacity 33 lbs each monitor
- VESA 75 x 75 or 100 x 100 (mm)
- Black or silver finish
- Cable management to organize and hide cords
- Can be shipped, easy to assemble





934-02 Monitor Arm

Standard Features

- Swivel: 360 (left to right)
- Rotate: 360 (landscape to portrait)
- Tilt: 105 (up or down)
- Standard pole 28"H, arms extend 16"
- Load capacity 33 lbs per monitor
- VESA 75 x 75 or 100 x 100 (mm)
- Black or silver finish
- Cable management to organize and hide cords
- Can be shipped, easy to assemble



STUDIO 8 FURNITURE by DeProMark

Integrated Technical Furniture

5901 Bakers Ferry Road NW Atlanta, GA 30336
404-349-9227 info@Studio8Furniture.com



934-03 Monitor Arm

Standard Features

- Swivel: 360 (left to right)
- Rotate: 360 (landscape to portrait)
- Tilt: 105 (up or down)
- Height adjustable: 16" - extends up to 24"
- Load capacity up to 13 lbs per monitor
- VESA 75 x 75 or 100 x 100 (mm)
- Black or silver finish
- Cable management to organize and hide cords
- Can be shipped, easy to assemble



HORIZONTAL MOUNT

HOLDS UP TO 2x 24"
WIDESCREEN MONITORS

RANGE OF 16" HEIGHT
ADJUSTMENT

EXTENDS OUT UP TO 24"



VERTICAL MOUNT

STUDIO 8 FURNITURE by DeProMark

Integrated Technical Furniture

5901 Bakers Ferry Road NW Atlanta, GA 30336
404-349-9227 info@Studio8Furniture.com



950-06 Power Strip

Standard Features

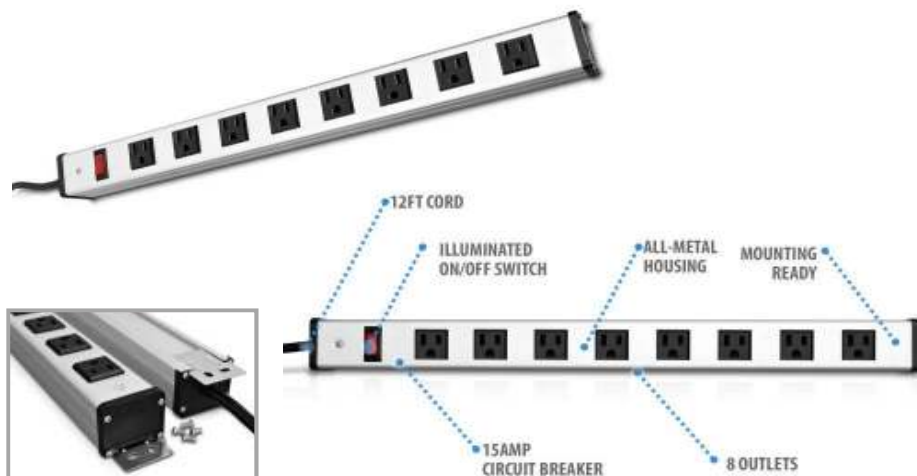
- Lit on/off rocker switch with built in 15A circuit breaker
- Sturdy construction, all-aluminum housing with 6 NEMA 5-15R output receptacles
- Includes mounting brackets for horizontal or vertical installation
- Horizontal outlet layout provides room for AC adapters and transformers
- 12.5" x 2.5" x 1.5" with 6' cord



950-07 Power Strip

Standard Features

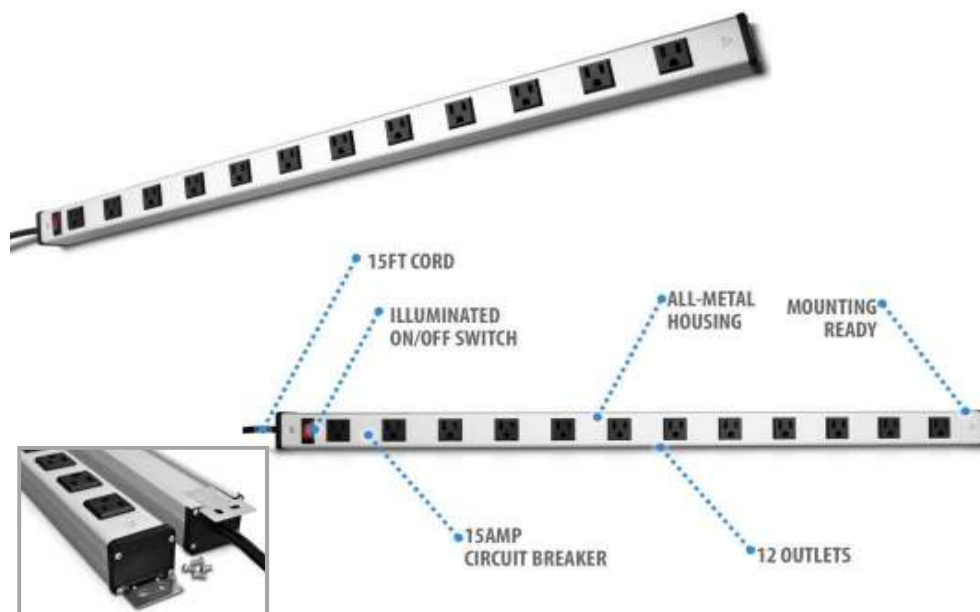
- Lit on/off rocker switch with built in 15A circuit breaker
- Durable black plastic housing with 7 NEMA 5-15R output receptacles
- Suppression rating of 2160 joules
- Includes mounting brackets for horizontal or vertical installation
- Horizontal outlet layout provides room for AC adapters and transformers



950-08 Power Strip

Standard Features

- Lit on/off rocker switch with built in 15A circuit breaker
- Sturdy construction, all-aluminum housing with 8 NEMA 5-15R output receptacles
- Includes mounting brackets for horizontal or vertical installation
- Horizontal outlet layout provides room for AC adapters and transformers
- 23.2" x 1.9" x 1.6" with 12' cord



950-12 Power Strip

Standard Features

- Lit on/off rocker switch with built in 15A circuit breaker
- Sturdy construction, all-aluminum housing with 12 NEMA 5-15R output receptacles
- Includes mounting brackets for horizontal or vertical installation
- Horizontal outlet layout provides room for AC adapters and transformers
- 33.5" x 1.9" x 1.6" with 12' cord

STUDIO 8 FURNITURE by DeProMark

Integrated Technical Furniture

5901 Bakers Ferry Road NW Atlanta, GA 30336
404-349-9227 info@Studio8Furniture.com



951-01 Power/Data Grommet

Standard Features

- 3 ground power outlets 15A / 125V / 60Hz / 1875 housing
- 2 Cat 5 ethernet connections or 2 USB connections
- Fire retardant ABS housing
- Power cord SJT 14/3C, 8'
- Low profile, 1-1/4" height with 'flip-over' access
- 4-3/8" outer grommet ring with 8' cord



952-01 Power/Data Bar

Standard Features

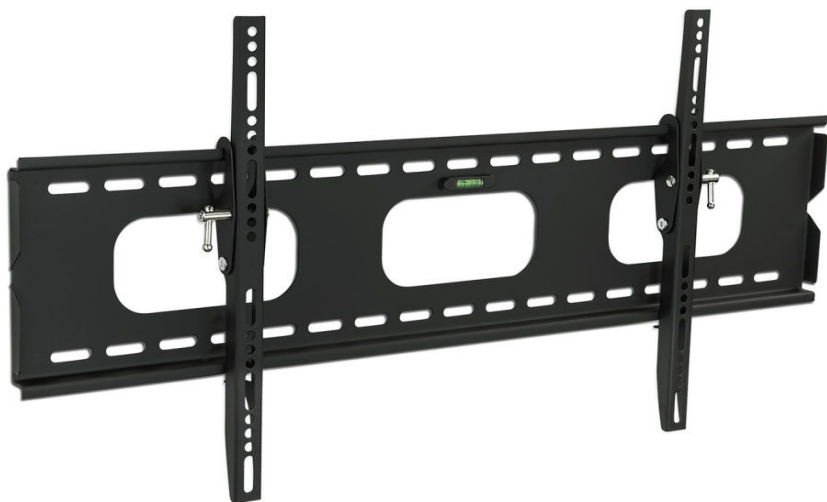
- Two 120V AC outlets, 12A maximum rating
- 2 USB 5V 2.1 amp charging ports
- 2 USB 2.0 data transmission ports for PC communication
- One RJ45 ethernet coupler
- One 4PAC phone coupler
- 10' 14AWG x 3C power cord
- Plate size: 8-3/4" wide x 4-7/8" diameter
- Black finish



960-01

Standard Features

- Mid to large screen wall mount monitor bracket
- Can hold from 32" to 60" TV (depends on model) and supports up to 175 lbs
- 12 degree adjustable tilt
- Low profile bracket, projects only 1.5"
- Heavy duty cold rolled steel construction, black paint finish
- Fits VESA patterns up to 600mm x 400mm



960-02

Standard Features

- Mid to large screen wall mount monitor bracket
- Can hold from 42" to 70" TV (depends on model) and supports up to 220 lbs
- 12 degree adjustable tilt
- Low profile bracket, projects only 1.5"
- Heavy duty cold rolled steel construction, black paint finish
- Fits VESA patterns up to 600mm x 400mm

STUDIO 8 FURNITURE by DeProMark

Integrated Technical Furniture

5901 Bakers Ferry Road NW Atlanta, GA 30336
404-349-9227 info@Studio8Furniture.com



961-01

Standard Features

- Mid to large screen monitor bracket with pull-out extension arm
- Can hold from 32" to 55" TV (depends on model) and supports up to 155 lbs
- 12 degree adjustable tilt
- Bracket depth compressed is 2.8" and extends to 17"
- Heavy duty cold rolled steel construction, black paint finish
- Fits VESA patterns up to 400mm x 400mm



961-02

Standard Features

- Large screen monitor bracket with pull-out extension arm
- Can hold up to 75" TV (depends on model) and supports up to 175 lbs
- 15 degree adjustable tilt
- Bracket depth compressed is 2.25" and extends to 25.75"
- Heavy duty cold rolled steel construction, black paint finish
- Fits VESA patterns up to 750mm x 450mm