

# **ELITE UNDERGROUND TOOLS LLC**



# About Us

Here at Elite Underground Tools LLC, We strive towards excellence and quality in our service. With over 28 years of experience , you can rest assured knowing that your job will be machined to perfection with the care and precision every customer deserves.

No job is too complex or challenging for us here at Elite Underground Tools LLC. Throughout the years, we have earned our customers trust through our exceptional workmanship and attention to detail. As we strive to meet every job's requirements and execute it with proper care.



# Business philosophy

Mission: Business Being a company dedicated to offering solutions in terms of high precision and quality machining; achieving satisfaction and covering customer needs, maximizing efficiency and productivity.

Vision: To be a leading machining company, mainly supplying a national market offering our production and parts repair services, taking into account the human factor as a quality principle for our parts.



. In order to provide a comprehensive service, the business was complemented by integrating, as part of our service, the development of complete systems, which includes

- Mechanical design.
- Manufacture of machined parts lathe,
  - Milling cutter, machining center.
- Assembly.
- Assembly and adjustment of mechanical systems.

- To guarantee customer satisfaction by offering complete system development, we have the following machinery :

## LATHES:

- FORTUNE Vturn-36
- Hydraulic Chuck 16" Dia
- 21" swing x 40" length



- DAEWOO PUMA 12L-B
- Hydraulic Chuck 16" Dia
- 21" swing x 40" length



# MILLS

## HASS HORIZONTAL EC-1600

- 4 Axis
- Travels (X/Y/Z)  
64"/40"/32"
- Coolant through spindle
- 30 HP



## HASS VF 5

- 4 Axis
- Travels (X/Y/Z)  
-50"/26"/32"
- 30 HP



## HASSVF3

- 4 Axis
- Travels(X/Y/Z)  
-40"/20"/25"



All parts are machined according to design or sample. To guarantee their quality, they are subjected to measurements by our quality personnel, checking that they meet the specifications indicated in the design or sample.



# Customers:



Tenaris



TOSHIBA



MasTec  
Utility Services



SPXFLOW



TechnipFMC

KINDER MORGAN



EVANTIC



SHAWCOR

ENDURANCE  
LIFT SOLUTIONS



niagara  
EST. 1963  
BOTTLING, LLC

FLOWSERVE



DOVER  
PRECISION  
COMPONENTS

CHAMPIONX



ASPEN  
Dependable. Efficient. Indoor Comfort.



STASSKOL



AFT  
XTERRA



MODUMETAL





- In order to develop the various activities mentioned above, we have highly experienced personnel in different specialties.
- Attended by:
- Sales: Sr. Javier Avila
- Mail : [JAvila@elimafa.com](mailto:JAvila@elimafa.com)
- Address: 2021 Aldine Mail Rte suite 301

## Visual Example



Carbon Steel Plate Cutting &  
CNC Machining



Oxyfuel & Water Jet Plate Cutting





Carbon Steel & UHMW Machining  
& Welding & Powder Coating



Heat Treated Round Bar

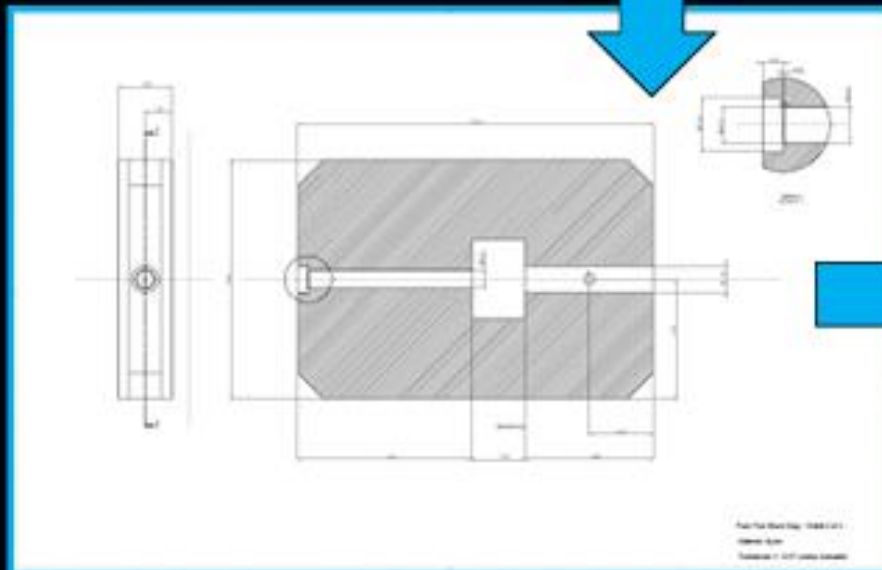
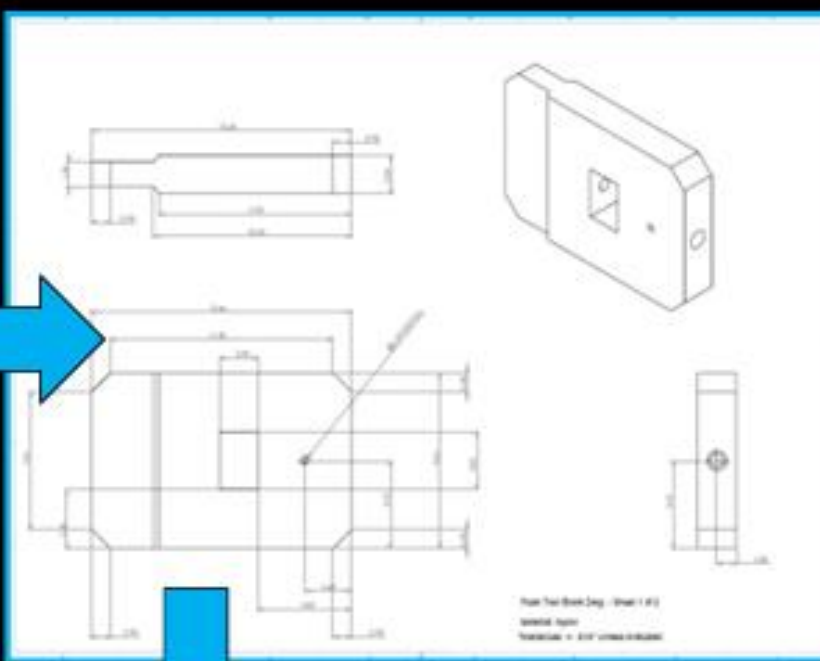
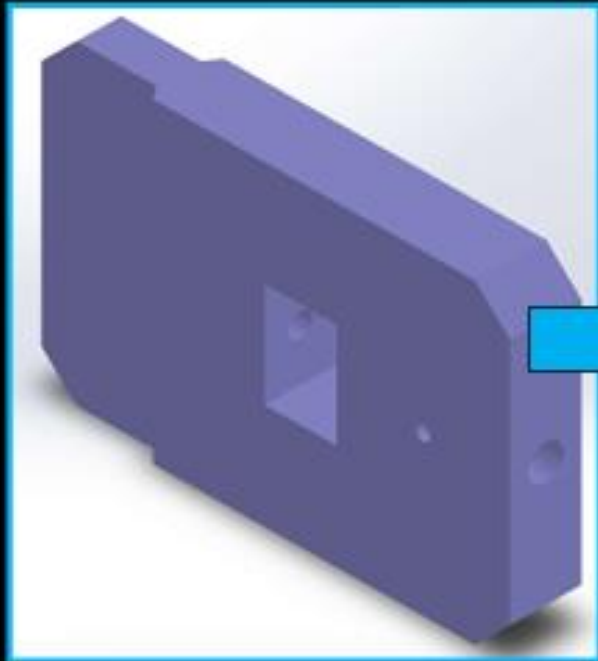




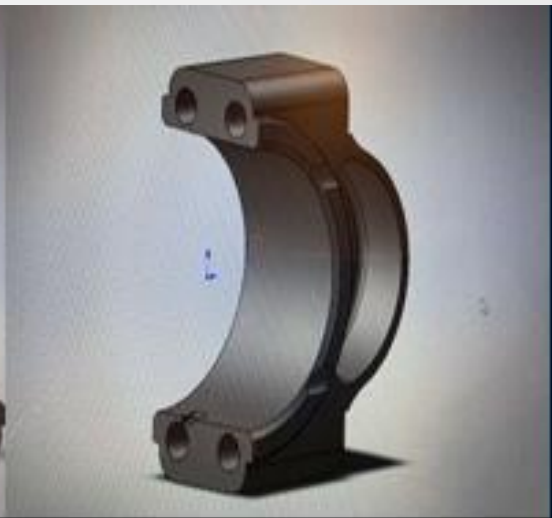
Wire EDM &  
Machining



# Nylon Push Tool



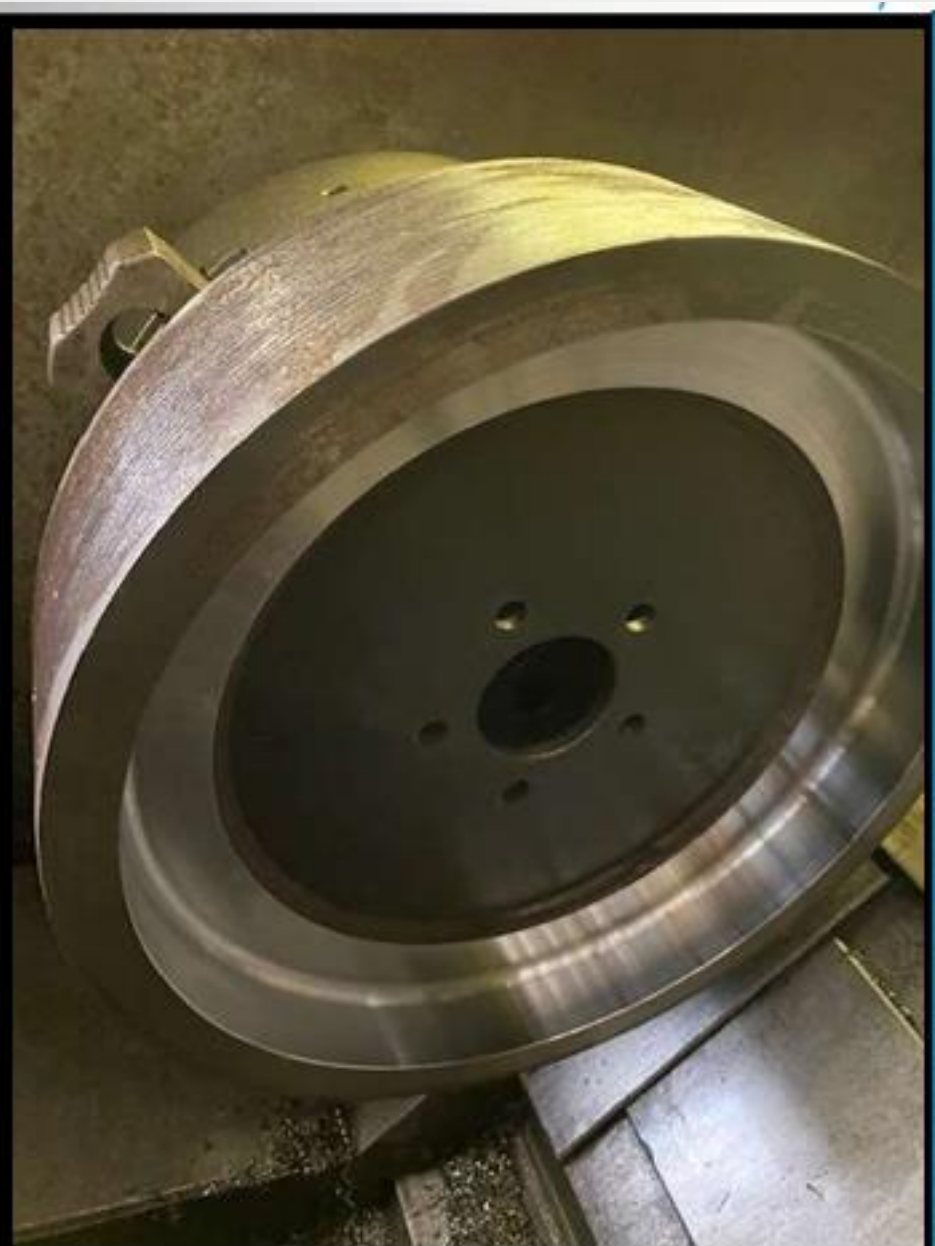






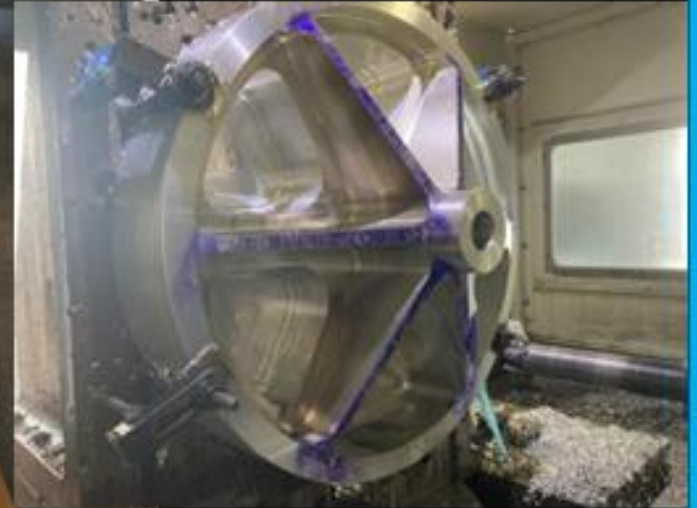
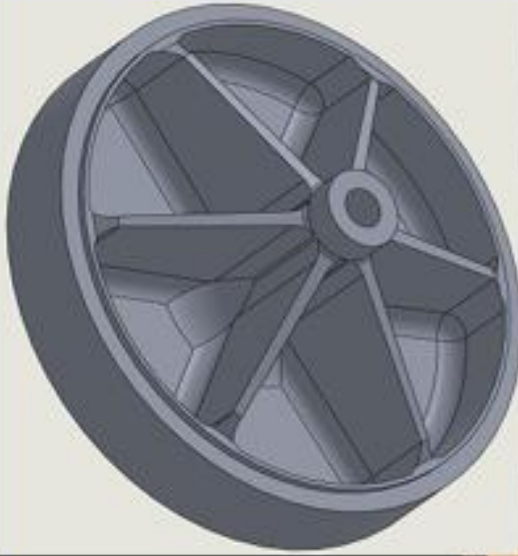












Mr. MCT MeekeFeb Industries



