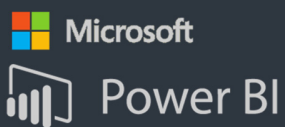


True InSite™

your project within sight



A New Virtual Reality Dimension Safety & Productivity Management

In collaboration with TEKLE Holographics, Virtual Creative Technologies True InSite™ provides project owners, architects, and contractors a true immersive environment to visualize and manage both the safety and productivity of construction, oil & gas, and industrial projects through processing data from Smart Safety Helmets, Building Information Modeling (BIM) and onsite LiDAR laser scanners.

Project information collected from the smart safety helmet Safe InSite™, Building Information Modelling (BIM), REVIT and LiDAR laser scanners are processed in real-time and displays in an immersive 3D hologram to provide a True InSite to workers' safety, productivity, and the overall health of the project.

BIM models can be directly imported from applications like Autodesk BIM 360, Autodesk Revit, Autodesk Navisworks, Rhino and SketchUp.

The holographic image can be viewed, rotated, and scaled in real-time. Multiple users can watch the display without the need for VR glasses, which would take away the real world and the other spectators.

Seamless integration provides owners, construction companies, architects and any other party involved in the building process endless possibilities and versatility. It will minimize mistakes in the planning and modelling stage, which will save time, money and wasted materials during the construction stage. This solution greatly contributes to sustainability and eco-friendly designs.



Safe InSite™

The first patented safety & productivity technology that combines the power of health monitoring and communication systems to deliver a unique and scalable safety management solution.

BridgingReality

Developed by Tekle Holographics, BridgingReality software solution provides seamless and real-time integration between Building Information Modeling tools and 3D hologram projection hardware.

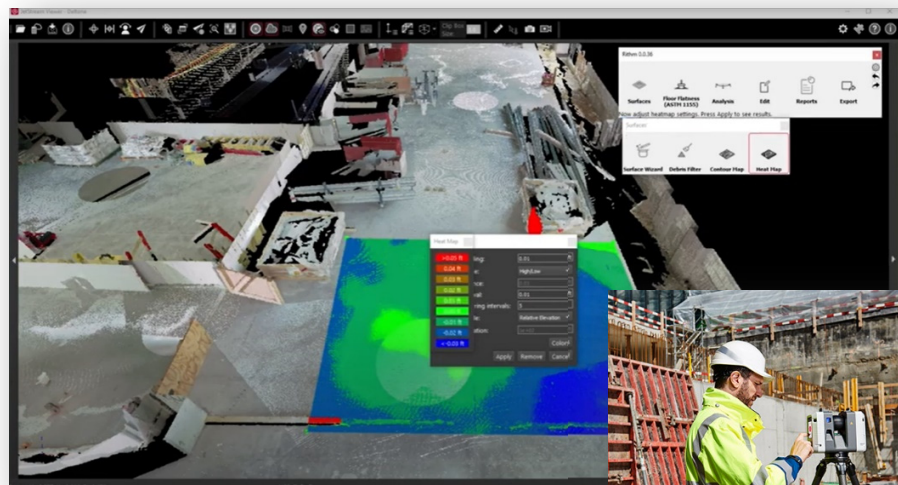
Leica RTC360

3D reality solution empowers users to document and capture their environments in 3D, improving efficiency and productivity in the field and in the office through fast, simple-to-use, accurate, and portable hardware, and software. The RTC360 3D laser scanner is the solution for professionals to manage project complexities with accurate and reliable 3D representations and discover the possibilities of any site.



Workers Safety & Productivity Sensors

Through its state-of-the-art safety helmet sensing device, VCT InSite captures the workers' location and vital signs. Data is transmitted and visualized in 3D



LiDAR 3D Laser Scanning

Realtime geospatial measurements of the project site during construction to provide an accurate visual model

