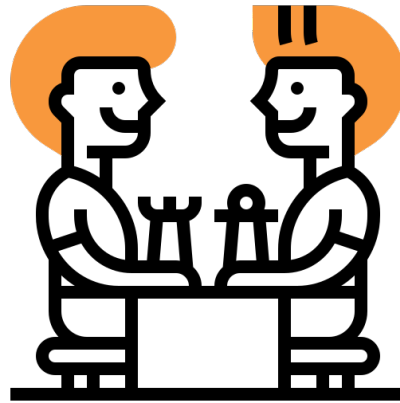


Intensive Chess Course

A Handbook for parents and children

May 2020

Intermediate level



Wow! You did it! Congratulations on completing our online live intensive chess course. During this Circuit Breaker period in Singapore you got a lot of new knowledge that made you stronger and smarter. 12 lessons are gone and now you can play this logic-tactic game quite well! Keep it up! I am proud of you!

Dear Parents, it was such a pleasure for me to share my chess knowledge with your children. I am thankful for your trust. For your reference together with my team we have prepared this small handbook for you and children. Here you can find themes we have learned during course, short descriptions of each lesson and a bit of entertainment to keep your child engaged. At any time you can google any theme and discuss it with your child while playing chess.

My Philosophy of Teaching

Teaching chess I feel an impact. Through teaching chess I try to instil children such qualities as critical thinking, reasoning, logic, mutual respect, discipline, patience. I believe this knowledge will be useful in their life.

I wish you all the best in your further learning journey!

Sincerely yours,
Akhmet Ishmukhamedov
Founder & Executive Director, Sauwat Strategy Private Limited
Chess Coach

Course description

1

Understanding chess rules, recalling how pieces move, understanding “magic” of the chessboard. We check each student’s chess knowledge and create a customised roadmap for all 12 chess lessons.

2

Most important opening game strategy: **controlling the main center and bigger center** by developing main pieces (knights, bishops, pawns) **towards the center.**

3

Second important opening game strategy: **avoid moving your pieces twice in the opening** to save enough moves to develop all pieces.

4

Middle game strategies: **open and closed positions.** Bishop is stronger in the open position; Knight is stronger in closed positions.

5

Middle game strategies: **avoiding double pawn structure, the strength of pinning opponent’s pieces.**

6

Playing day via chess.com. Students have a chance to showcase their chess knowledge in real-time. Akhmet will guide them while they are playing.

7

How to analyse your chess games. We learn how to record chess games so that later students can analyse their games. We learn how to identify strengths and weaknesses in each move.

8

Middle game tactics: We learn about **importance of supporting your pieces, developing Queen and Rooks in the middle game.**

9

Playing day via chess.com. We learn about time pressure when playing real games, repeating the same position leads to Draw.

10

End game strategies: **activating King from castling position** towards the center in order to support pieces. Checkmate with only Queen or Rook.

11

End game strategies: **Basic strategies in pawn and rook endings.**

12

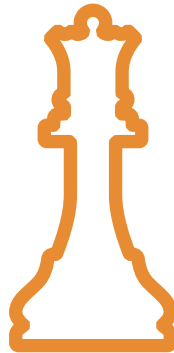
Integrating opening, middle, and end games strategies together. Students play in the final chess tournament on chess.com.

Chess Pieces

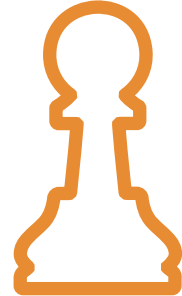
The chess board consists of 64 squares, half of them visibly white, the other half black. Each player has 6 different types of pieces: 8 pawns, 2 rooks, 2 knights, 2 bishops, a queen and the most important one – the king:



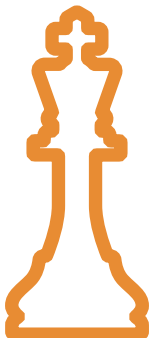
Knight



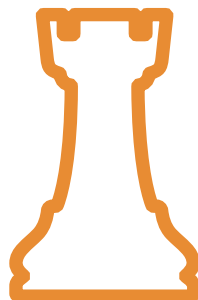
Queen



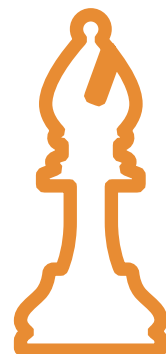
Bishop



King



Rook

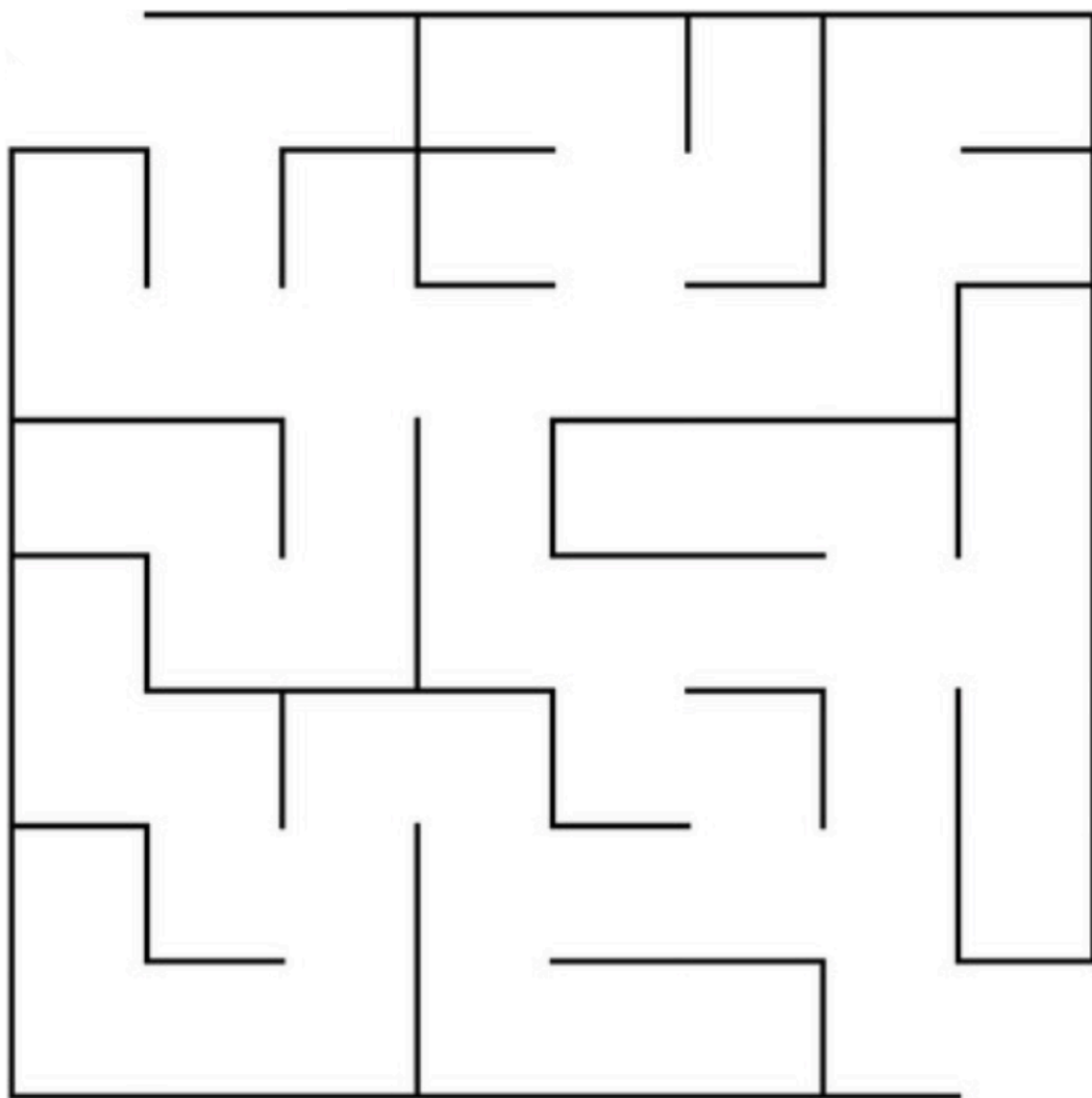


Pawn

“Chess is a quiet game of music of our mind”

Leonid Suhorukov

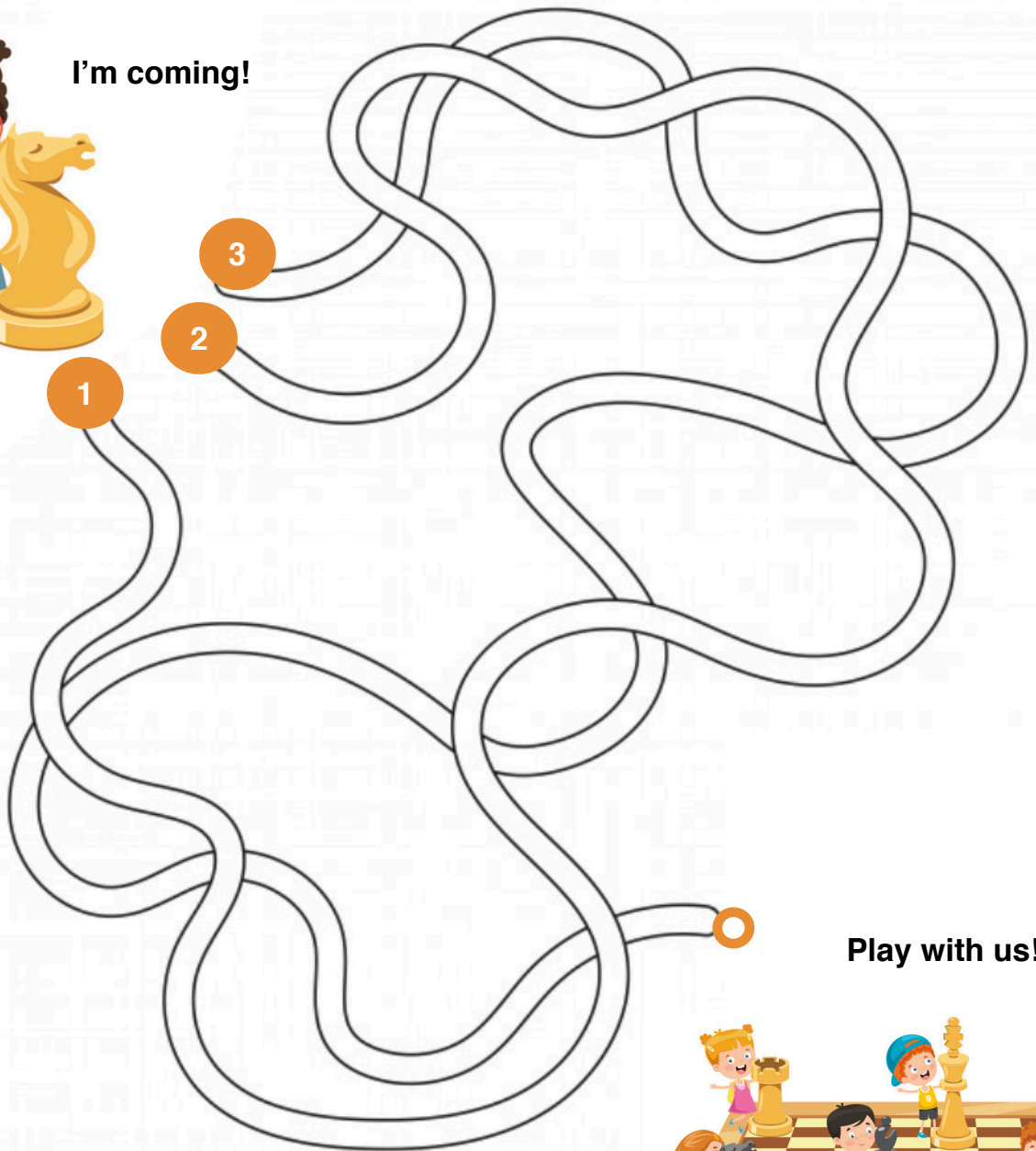
Help the children find their friends



Help the girl play with others



I'm coming!



Play with us!



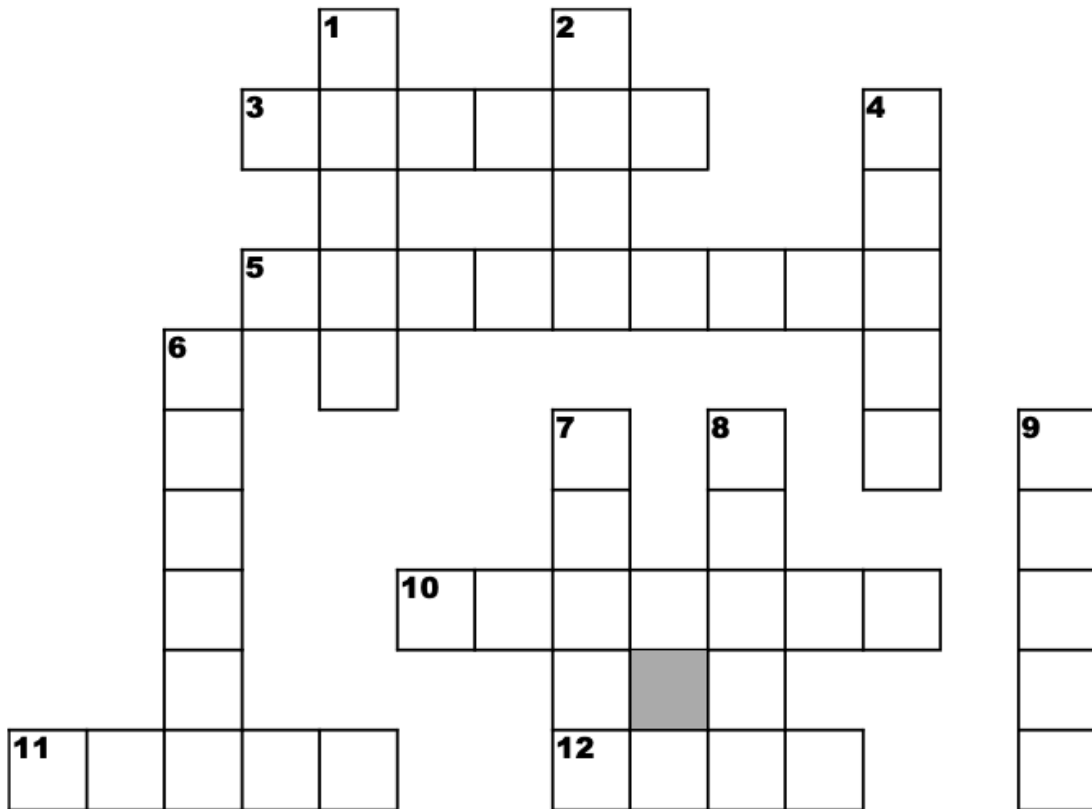
Solve the chess crossword

Down

1. Moves In An "L" Shape
2. Moves In Straight Lines
4. If You Attack The King You Might Say....
6. The Shape Of the Board
7. Side That Moves Second
8. It Can Go In Any Direction, except "L" Shape
9. What You Play On

Across

3. Moves Diagonally
5. You Say This When You Win
10. People Who Play The Game
11. The Game Itself
12. Can Move Only One Square, But In Any Direction



Answers

- | | |
|--------------|--------------|
| 1. Knight | 6. Square |
| 2. Rook | 5. Checkmate |
| 3. Bishop | 4. Check |
| 4. Check | 10. Players |
| 5. Checkmate | 11. Chess |
| 6. Square | 12. King |

Find the words in the puzzle

M	B	B	H	K	A	X	O
A	I	O	C	H	E	S	S
T	S	E	A	C	A	Z	H
E	H	I	H	P	O	Q	N
C	O	G	N	P	D	M	H
F	P	K	I	N	G	U	O
Q	U	E	E	N	W	A	P
I	P	G	J	N	K	J	G



Answers

bishop, chess, mate, pawn, queen,
king, check, knight