

1. GENERAL RULES

- 1.1. It is the driver's responsibility to ensure their vehicle meets and abides to all CORS rules, regulations, and specifications.
- 1.2. It is the driver's responsibility to ensure they are abiding by all rules and taking all safety measures possible to ensure their safety and all others safety during the event.
- 1.3. It is the driver's responsibility to control ALL attending crew members. If there is an issue with a team member, the team you are associated with will be penalized or asked to leave.
- 1.4. CORS waiver must be signed at EVERY event. NO EXCEPTIONS. If a waiver is not signed by everyone associated with the team they represent, the driver / team will receive a DQ for the event and will not receive any points for the event.
- 1.5. If any technical infractions are seen by a race official, the car will not be allowed to participate in on-track activities. Infractions may include point deductions or a DQ for the event.

2. VEHICLE SAFETY EQUIPMENT

- 2.1. Roll cage
 - 2.1.1. **AFTERMARKET WELL BUILT ROLL CAGES ARE MANDATORY FOR ALL CLASSES.**
 - 2.1.1.1. Cages must include proper headache bars, intrusion bars, and proper gusseting.
 - 2.1.2. All cages must maintain their integrity. Example – no grinding, drilled holes, completely welded, etc.
 - 2.1.3. All cages must meet quality fabrication standards. The CORS officials will determine if the cage meets quality fabrication standards.
 - 2.1.4. All roll cage components must have a minimum of 3" of clearance to the occupants helmet.
 - 2.1.5. Any part of the cage that may contact the occupant's helmet must have proper race roll bar padding.
 - 2.1.6. Roofs are mandatory for every class.
- 2.2. Vehicle harness
 - 2.2.1. All vehicles must have a minimum 5-point harness for all occupants. This must include shoulder straps, lap belts, anti-submarine belt.
 - 2.2.2. Belts must be properly mounted to the structural members of the chassis.
 - 2.2.3. Any frayed belts will not be allowed.
 - 2.2.4. No portion of the harness can be altered in any fashion.
 - 2.2.5. SFI tags must be in date.
 - 2.2.6. All belts must be double passed through the buckles. (see section 17 for proper mounting)
- 2.3. Window Nets / Arm restraints
 - 2.3.1. Window nets / Arm restraints must be present for each occupant in the machine.
 - 2.3.2. Window nets / Arm restraints must be a specifically manufactured racing style window net / Arm restraint.
 - 2.3.3. Window nets must be properly mounted to the machine.
- 2.4. Doors
 - 2.4.1. All machines must have full doors covering the entire side of the machine.
 - 2.4.2. No door nets will be allowed in any class.
 - 2.4.3. All functional door MUST be secured in such a way that it will prevent them from opening during the race.
- 2.5. Fire suppression / Fire extinguishers
 - 2.5.1. Automatic fire suppression systems are recommended.
 - 2.5.2. All fire extinguishers must be mounted by means of a quick release system.
 - 2.5.3. No taping, zip tying, or strapping fire extinguishers.
 - 2.5.4. Removable fire extinguishers must be easily accessible.
- 2.6. Fuel cells
 - 2.6.1. Any OEM or SFI fuel cells must be properly mounted and protected.
 - 2.6.2. SFI fuel cells are permitted.
 - 2.6.3. No portable or "jerry" cans will be allowed.
 - 2.6.4. Any steel / aluminum fuel cells must have a rubber bladder.
 - 2.6.5. Fuel cell location is up to the CORS officials to determine if the cell will need to have added structure around it.
- 2.7. Lights
 - 2.7.1. All machines must have at a minimum at least one taillight for both short course and endurance race.
 - 2.7.2. Minimum taillight size for the endurance race is 10 square inches, or factory taillights are acceptable.
 - 2.7.3. Chase lights
 - 2.7.3.1. No blue or white flashing strobe lights will be allowed for the endurance race.
 - 2.7.3.1.1. If you cannot turn it off, place tape over the flashing portion of the light.
 - 2.7.4. During the endurance race if one of your light does not work, you will be black flagged, and you must fix the light to continue.
- 2.8. Number plates
 - 2.8.1. Number plates must be always present on each side of the machine and on the rear of the machine.
- 2.9. Ballast
 - 2.9.1. Added weight must be securely fastened to the chassis in a safe strong manner using 2 x 3/8" grade 8 bolts or better for each 10#s added. Any ballast added over 10#s will require 2 x 1/2" grade 8 bolts.
 - 2.9.2. Any ballast lost during the race cannot be returned to the car for post-race weigh in.
 - 2.9.3. All ballast must be painted white and have the car number on it.
- 2.10. Rock Screen
 - 2.10.1. Mandatory to run rock screens in front of any occupant in the car for the short course race.

3. PERSONAL SAFETY EQUIPMENT – MUST BE PRESENTED AT INSPECTION - ALL ITEMS ARE MANDATORY AT ALL TIMES...!

- 3.1. Fire retardant suits.
 - 3.1.1. You must be covered head to toe when entering the racing surface.
 - 3.1.2. Absolutely no alterations to fire suits.
 - 3.1.3. This rule applies to practice day as well.
- 3.2. HELMETS
 - 3.2.1. Must be full face.
 - 3.2.2. Must meet DOT, SNELL, or ECE standards.
 - 3.2.3. No open face helmets.
 - 3.2.4. Goggles are required if your helmet does not have a visor.
- 3.3. Gloves
 - 3.3.1. Mandatory always for all occupants in the machine.
- 3.4. Footwear
 - 3.4.1. No open toed shoes, sandals, slippers.
- 3.5. Head and Neck restraint
 - 3.5.1. Hans, Necksgen, Simpson Hybrid, Foam neck collar.

4. GENERAL RACING RULES

- 4.1. The pit area / camping area is an idle speed area only.
 - 4.1.1. Failure to do so will result in a DQ for the event.
- 4.2. We will have a drivers meeting for the event, for both short course and Endurance race.
 - 4.2.1. ALL drivers are required to sign in and attend – NO EXCEPTIONS.
 - 4.2.1.1. If your name is not on the sign in sheet you will not receive any money for the event.
- 4.3. Flags
 - 4.3.1. Green – racing – track is hot.
 - 4.3.2. Yellow – caution – slow down to a safe speed.
 - 4.3.3. Red – stop where you are and stay there.
 - 4.3.4. White – last lap of the race.
 - 4.3.5. Checkered – race is over.
 - 4.3.6. Black flag – you are being stopped by race control for an issue.
 - 4.3.6.1. Failure to stop will result in a DQ for the event.
 - 4.3.7. Blue flag – you are being lapped, move out of the racing groove until the lead lap cars are pass you.
- 4.4. Rough driving
 - 4.4.1. Will not be tolerated.
 - 4.4.1.1. Rough driving will result in a DQ for the event.
 - 4.4.1.2. It is up to race officials to determine if you are considered to be flagged for rough driving.
- 4.5. Machine issues
 - 4.5.1. If you have a machine issue and cannot keep up race pace, pull off the track in a safe manner and stay out of the racing groove.
- 4.6. All team members and drivers are only allowed to be in the spectator area or the staging area.
 - 4.6.1. Failure to do so will result in a DQ for the team you are with.
- 4.7. Fighting
 - 4.7.1. You will be disqualified from the event if the driver or a team member is fighting or approaches another driver / team member from another team in a hostile manner.
- 4.8. Drugs / Alcohol
 - 4.8.1. ZERO TOLERANCE
 - 4.8.1.1. If we smell it or see it you will be asked to leave the series for the year.
- 4.9. Protesting
 - 4.9.1. All protests must be filed with the race director or officials within 30 min of the completion of the event. The protest must come from a competitor in the same class.
 - 4.9.2. You must describe what you are protesting in writing to the race director or officials.
 - 4.9.3. \$1,000.00 protest fee for each item that you are protesting. Cash only
 - 4.9.4. CORS will retain 30% of the amount protested and the remaining 70% will go the winner of the protest.
 - 4.9.5. All decisions made by the CORS series will be final.
- 4.10. Complaints
 - 4.10.1. If you have a complaint at any time, find an official and discuss in a calm manner. CORS will discuss the issue and decide on the issue at hand.
- 4.11. Any tampering of another competitor's machine will result in a DQ and you will not be allowed to attend a CORS event in the future.

5. TECH INSPECTION

- 5.1. The way you present the machine for tech inspection is how you must race it, no altering the machine once it is inspected.
- 5.2. All machines must pass tech inspection during inspection times posted on the schedule.
- 5.3. If at any time you refuse to have tech performed on your car, you will not be allowed to race.
- 5.4. Only the driver or one crew member can go through tech with the car.
- 5.5. If the driver is a minor, a parent or one adult team member is allowed to be present.
- 5.6. CORS will perform post-race tech for the top 5 finishing cars in a determined class. Numerous different items can be checked at this time.
 - 5.6.1. You must pull into the impound area and NO ONE is allowed around the car until post-race tech is completed. If someone comes to the car you will be DQ'd for the event.
 - 5.6.1.1. If the driver is a minor, we will allow a parent or adult team member to be present.
- 5.7. If there is a situation that you need to switch cars
 - 5.7.1. Notify a race official.
 - 5.7.2. The car that you are switching to must be presented for inspection.
 - 5.7.3. You will be deducted 3 points for the event if you switch machines during the event.
- 5.8. If you enter multiple machines for the event.
 - 5.8.1. Each machine must have a different number.

- 5.8.2. Each machine must have a different transponder number.
- 5.8.3. Each machine must be registered, and all entry fees paid for the class you are registering it for.
- 5.8.4. Each machine will be scored and receive points for the event under the number that is registered under.

6. REGISTRATION / TRANSPONDERS

- 6.1. SHORT COURSE AND ENDURANCE RACE ARE INDIVIDUAL EVENTS
- 6.2. NO refunds once you start a timed lap for a event.
- 6.3. Transponders
 - 6.3.1. Transponders will be rented to you during tech inspection if you do not have a personal transponder.
 - 6.3.2. Bring your personal transponder with the car for inspection.
 - 6.3.3. The car that the transponder was registered for is the only machine that transponder will be on. If it is moved to another car without CORS knowledge you will not receive points or money for the event.
 - 6.3.4. Any transponder that is not returned the same day of the event, the deposit will be forfeited.
 - 6.3.5. If you are using your personal transponder, please make sure it is in proper working condition or you will not be timed for the event.
 - 6.3.6. If your personal transponder does not work and we must put one of our transponders on your car, you will be charged for the use of the transponder.
 - 6.3.7. You cannot take a transponder from another machine and place it on a different machine.
 - 6.3.8. We will not accept "trade in" personal transponders for payment of your rental transponder.
- 6.4. Paying classes
 - 6.4.1. All racers must fill out a w-9 form to receive pay for the event.

7. SHORT COURSE

- 7.1. You must be ready to go when the class you are running is called or you will receive a DNS for the event.
- 7.2. Qualifying will determine your starting position for the race.
 - 7.2.1. You will get 5 laps of qualifying / practice the morning of the event.
 - 7.2.1.1. We will take you fastest lap from that session for your starting spot.
- 7.3. The start and competition restart will be a double file rolling start.
- 7.4. Any caution re-start will be a single file re-start.
- 7.5. The leader must start the race.
 - 7.5.1. Leader must start the race in the designated starting zone.
 - 7.5.2. Any jumping of the start by anyone but the leader will result in a DNF for the event by the one that provoked the false start.
 - 7.5.3. Everyone must maintain their line and not "crowd" the others out of their lane.
 - 7.5.4. Leader has the option to start in the inside or outside lane.
 - 7.5.5. Leader must maintain a steady pace while entering the start zone until the leader starts the race.
 - 7.5.6. No brake checking.
 - 7.5.7. Leader cannot speed up and slow down while in the start zone. A steady speed must be maintained.
- 7.6. Each race will be 12 laps with a competition caution at the completion of lap 6.

8. ENDURANCE RACE

- 8.1. Machines must be staged 30 mins before the start of the race.
- 8.2. This is a "No Chase" race. No one is allowed on the racecourse for any reason at all.
 - 8.2.1. If someone is seen on the course without permission form CORS, the team you are associated with will be disqualified for the event.
- 8.3. Deviating from the racecourse – course cutting.
 - 8.3.1. Automatic disqualification – no questions.
- 8.4. If you have an issue with your machine, do all that you can safely do to get it out of the racecourse.
 - 8.4.1. If your machine is on the racecourse with an issue and you are safely out of the machine, let the racers heading towards your disabled machine know that is it blocking a portion of the trail with your flashlight.
- 8.5. Sweepers
 - 8.5.1. We will have sweepers on the course during the race, they are to assist you if you have an issue.
 - 8.5.1.1. They are not to help fix your machine, but they are to help you stay safe out there or get you back to the pit area (if possible).
 - 8.5.1.2. They cannot tow a machine out of the woods until the race is final.
 - 8.5.1.3. Cannot take additional people out to help fix a machine, unless approved by a CORS official.
- 8.6. Blocking
 - 8.6.1. If someone is behind you, it is in your best interest to not hold them up.
 - 8.6.1.1. Penalties will be assessed.
- 8.7. Flashlight – battery powder flashlight must be in each machine.
 - 8.7.1. The light from your cell phone is not an approved flashlight.
- 8.8. You must be 16 years old to run the endurance race by yourself. If you are under 16 years old, you must have an adult in the machine with you.
- 8.9. Communication
 - 8.9.1. Please let an official know if there is any issue on the racecourse. Radio to one of your crew members and have them relay the message to the official.
 - 8.9.2. We will designate a radio channel for the racers to communicate with the officials for this race.
- 8.10. Caution flag
 - 8.10.1. If you see the caution flag during the race, it is mandatory that you WILL do 15 mph back to the start line.
 - 8.10.1.1. The only reason we would have the caution flag is for a medical emergency and we need to get EMT to the scene.
 - 8.10.1.1.1. Once you are back to the start line, this is not a time to have your car worked on. If you pull into the pit area you will not get your position back, you will go to the end of the line and your time will not be corrected.
 - 8.10.1.1.2. Team members cannot come to the car at this time.

9. CLASSES / ENTRY FEES / PAYOUTS

SHORT COURSE:

Sponsored payouts will be announced throughout the season

- 9.1. PRO MOD
 - 9.1.1. Short course race - \$200.00 – 50% payback (payout based off entry fees, 10% goes to point fund)
- 9.2. PRO TURBO
 - 9.2.1. Short course race - \$200.00 – 50% payback (payout based off entry fees, 10% goes to point fund)
- 9.3. TURBO AMATEUR
 - 9.3.1. Short course race - \$120.00 – Trophy class
- 9.4. PRO N/A
 - 9.4.1. Short course race - \$200.00 – 50% payback (payout based on entry fees, 10% goes to point fund)
- 9.5. AMATEUR N/A
 - 9.5.1. Short course race - \$120.00 – Trophy class
- 9.6. SPORTSMAN
 - 9.6.1. Short course race - \$100.00 – Trophy class
- 9.7. YOUTH STOCK
 - 9.7.1. Short course race - \$70.00 – Trophy class
- 9.8. YOUTH MODIFIED
 - 9.8.1. Short course race - \$70.00 – Trophy class
- 9.9. KIDS STOCK
 - 9.9.1. Short course race - \$50.00 – Trophy class
- 9.10. KIDS LIMITED
 - 9.10.1. Short course race - \$50.00 – Trophy class
- 9.11. KIDS MODIFIED
 - 9.11.1. Short course race - \$50.00 – Trophy class

ENDURANCE RACE:

Sponsored payouts will be announced throughout the season

- 9.12. KIDS AMATEUR
 - 9.12.1. 30 minute endurance race - \$50.00 – Trophy class
- 9.13. KIDS OPEN
 - 9.13.1. 30 minute endurance race - \$50.00 – Trophy class
- 9.14. YOUTH AMATEUR
 - 9.14.1. 45 minute endurance race - \$70.00 – Trophy class
- 9.15. YOUTH OPEN
 - 9.15.1. 45 minute endurance race - \$70.00 – Trophy class
- 9.16. OPEN ENDURANCE
 - 9.16.1. 2 hour endurance race - \$200.00 – 50% payback (payout based on entry fees, 10% goes to point fund)
- 9.17. AMATEUR ENDURANCE
 - 9.17.1. 2 hour endurance race - \$120.00 – Trophy class

OTHER:

- 9.18. TRANSPONDERS
 - 9.18.1. \$120.00 for rental.
 - 9.18.2. \$100.00 will be refunded to you when the transponder is returned the day of the event.
 - 9.18.3. If the transponder is not returned the day of the event, your deposit will be forfeited.
- 9.19. EMT FEE – Mandatory per car
 - 9.19.1. \$20.00 per registered racer – nonrefundable.
- 9.20. CO-DRIVER
 - 9.20.1. \$20.00 per event. Unless the driver is underage, and driver needs to have an adult with them.
- 9.21. PAY OUT
 - 9.21.1. W-9 form must be filled out to receive the winnings for all classes.
 - 9.21.2. 1 hour following the event, you must go to the registration to pick up your check.

10. POINTS

10.1. 2022 POINTS SYSTEM

2021 POINTS SYSTEM		
REVISED 2/20/21		
PLACE	POINTS	
1	200	1 POINT SPLIT BETWEEN POSITIONS
2	199	
3	198	
4	197	
5	196	
6	193	3 POINT SPLIT BETWEEN POSITIONS
7	190	
8	187	
9	184	
10	181	
11	176	5 POINT SPLIT BETWEEN POSITIONS
12	171	
13	166	
14	161	
15	156	
16	151	
17	146	
18	141	
19	136	
20	131	
21	126	
22	121	
23	116	
24	111	
25	106	

10.2.DNS - did not start = 0 points for the event.

10.3.DNF – did not finish = you will earn points for the last running position at the time when you had the issue.

10.4.Tie breaker will be determined by most wins, 2nd place finishes, etc.

10.5.You must be present in at least 6 events to qualify for season points.

10.6.You are allowed one drop race for points. Your lowest point race will be dropped.

11. VENDORS

11.1.Vendors are welcome, but there will be a fee for a vendor to sell items at a CORS series event. This does not matter if the vendor is a competitor or not, if items are being sold at CORS event, you must pay a vendor fee.

11.2.Vendors are to contact CORS to be able to sell items at a CORS event, failure to do so, you will be asked to leave the event.

12. RULES PER CLASS

12.1. PRO MOD

- 12.1.1. Power adders (ie, turbo or super charger)
- 12.1.2. No nitros – any pressureized tanks must be removed.
- 12.1.3. Tread width = 78" measured outside of tire to outside of tire.
- 12.1.4. Ride height = 10" from the lowest part of the frame.
- 12.1.5. Tires - Any tire that can be purchased online as a utv / sxs tire and is readily available is approved.
 - 12.1.5.1. Hoosier utv specific tire is allowed.
 - 12.1.5.2. Maxxis SC1 tires are allowed.
- 12.1.6. Weight
 - 12.1.6.1. Turbo or super charged machine = 1,800 #'s with driver.
 - 12.1.6.2. N/A machine = 1,550 #'s with driver.

12.2. PRO TURBO

- 12.2.1. This class is reserved to cars as they are shipped from the manufactures, except the vehicle safety rules stated in section 2.
- 12.2.2. Body – vehicle must maintain an appearance like the make and model as shipped from the manufacture.
- 12.2.3. One power adder can be used (i.e. one turbo or one super charger)
- 12.2.4. No nitros – any nitros tanks must be removed from the machine.
- 12.2.5. The engine must be an OEM UTV specifically manufactured production engine and must match the make of the machine.
- 12.2.6. All makes and all engines must be stock bore size and stroke as shipped from the manufacture.
- 12.2.7. All turbos must be OEM turbo as shipped from the manufacture.
- 12.2.8. Tread width = 76" from outside of tire to outside of tire.
- 12.2.9. Ride height = 10" from the lowest part of the frame.
- 12.2.10. Tires - Any tire that can be purchased online as a utv / sxs tire and is readily available is approved.
 - 12.2.10.1. No tires designed for circle track racing will be allowed.
 - 12.2.10.2. Hoosier UTV Knobby tire will be allowed.
 - 12.2.10.3. Goodyear, American Racer, McCreary, Maxxis short course tire will not be allowed.
- 12.2.11. Weight (all weights are with the driver in the car)
 - 12.2.11.1. Polaris XP Turbo – 1600
 - 12.2.11.2. Polaris XP Pro – 1850
 - 12.2.11.3. Can Am model years up to 2019 – 1850
 - 12.2.11.4. Can Am model years 2020 to present – 1950
 - 12.2.11.5. Yamaha YXZ – 1850
 - 12.2.11.6. Honda Talon – 1850
 - 12.2.11.7. Any N/A car 1580

12.3. TURBO AMATEUR

- 12.3.1. This class is reserved to cars as they are shipped from the manufactures, except the vehicle safety rules stated in section 2.
- 12.3.2. Body – vehicle must maintain an appearance like the make and model as shipped from the manufacture.
- 12.3.3. One power adder can be used (i.e. one turbo or one super charger)
- 12.3.4. No nitros – any nitros tanks must be removed from the machine.
- 12.3.5. The engine must be an OEM UTV specifically manufactured production engine and must match the make of the machine.
- 12.3.6. All makes and all engines must be stock bore size and stroke as shipped from the manufacture.
- 12.3.7. All turbo must be OEM turbos, charge tubes, and blow off valves as shipped from the manufacture.
- 12.3.8. No billet cylinders.
- 12.3.9. Tread width = 76" from outside of tire to outside of tire.
- 12.3.10. Ride height = 10" from the lowest part of the frame.
- 12.3.11. Tires - Any tire that can be purchased online as a utv / sxs tire and is readily available is approved.
 - 12.3.11.1. No tires designed for circle track racing will be allowed.
 - 12.3.11.2. Hoosier UTV Knobby tire will be allowed.
 - 12.3.11.3. Goodyear, American Racer, McCreary, Maxxis short course tire will not be allowed.
 - 12.3.11.4. Rally tires and snow tires are allowed.
- 12.3.12. Weight (all weights are with the driver in the car)
 - 12.3.12.1. Polaris XP Turbo – 1600
 - 12.3.12.2. Polaris XP Pro – 1850
 - 12.3.12.3. Can Am model years up to 2019 – 1850
 - 12.3.12.4. Can Am model years 2020 to present – 1950
 - 12.3.12.5. Yamaha YXZ – 1850
 - 12.3.12.6. Honda Talon – 1850
 - 12.3.12.7. Any N/A car 1580
- 12.3.13. If your lap times are considerably faster than the rest of the class, you will be moved to the Pro Turbo class by the CORS series.
 - 12.3.13.1. If CORS decides that you need to be moved to Pro Turbo you will keep 50% of your season points from Turbo Amateur.

12.4. PRO N/A

- 12.4.1. This class is reserved to cars as they are shipped from the manufactures, except the vehicle safety rules stated in section 2.
- 12.4.2. Body – vehicle must maintain an appearance like the make and model as shipped from the manufacture.
- 12.4.3. No turbo or supper charged machine allowed.
- 12.4.4. No nitros – any nitros tanks must be removed from the machine.
- 12.4.5. The engine must be an OEM UTV specifically manufactured production engine and must match the make of the machine.
- 12.4.6. All makes and all engines must be stock bore size and stroke as shipped from the manufacture.
- 12.4.7. No billet cylinders.
- 12.4.8. Suspension points must remain in the stock location.
 - 12.4.8.1. Yamaha YXZ front shock location can be moved no more than a total of 4" out and 2" up from original location.
- 12.4.9. Tread width = 72.5" from outside of tire to outside of tire.
- 12.4.10. Ride height = 10" from the lowest part of the frame.
- 12.4.11. Tires - Any tire that can be purchased online as a utv / sxs tire and is readily available is approved.
 - 12.4.11.1.No tires designed for circle track racing will be allowed.
 - 12.4.11.2.Hoosier UTV Knobby tire will be allowed.
 - 12.4.11.3.Goodyear, American Racer, McCreary, Maxxis short course tire will not be allowed.
 - 12.4.11.4.Rally tires and snow tires are allowed.
- 12.4.12. Weight (all weights are with the driver in the car)
 - 12.4.12.1.Polaris – 1600
 - 12.4.12.2.Yamaha YXZ – 1775
 - 12.4.12.3.Honda Talon – 1700
 - 12.4.12.4.Can Am – 1600
 - 12.4.12.5.Arctic cat – 1775
 - 12.4.12.6.Kawasaki krx 1000 – 1750

12.5. AMATEUR N/A

- 12.5.1. This class is reserved to cars as they are shipped from the manufactures, except the vehicle safety rules stated in section 2.
- 12.5.2. Body – vehicle must maintain an appearance like the make and model as shipped from the manufacture.
- 12.5.3. No turbo or supper charged machine allowed.
- 12.5.4. No nitros – any nitros tanks must be removed from the machine.
- 12.5.5. The engine must be an OEM UTV specifically manufactured production engine and must match the make of the machine.
- 12.5.6. All makes and all engines must be stock bore size and stroke as shipped from the manufacture.
- 12.5.7. No billet cylinders.
- 12.5.8. Suspension points must remain in the stock location.
 - 12.5.8.1. Yamaha YXZ front shock location can be moved no more than a total of 4" out and 2" up from original location.
- 12.5.9. Tread width = 72.5" from outside of tire to outside of tire.
- 12.5.10. Ride height = 10" from the lowest part of the frame.
- 12.5.11. Tires - Any tire that can be purchased online as a utv / sxs tire and is readily available is approved.
 - 12.5.11.1.No tires designed for circle track racing will be allowed.
 - 12.5.11.2.Hoosier UTV Knobby tire will be allowed.
 - 12.5.11.3.Goodyear, American Racer, McCreary, Maxxis short course tire will not be allowed.
 - 12.5.11.4.Rally tires and snow tires are allowed.
- 12.5.12. Weight (all weights are with the driver in the car)
 - 12.5.12.1.Polaris – 1600
 - 12.5.12.2.Yamaha YXZ – 1775
 - 12.5.12.3.Honda Talon – 1700
 - 12.5.12.4.Can Am – 1600
 - 12.5.12.5.Arctic cat – 1775
 - 12.5.12.6.Kawasaki krx 1000 – 1750
- 12.5.13. If your lap times are considerably faster than the rest of the class, you will be moved to the Pro N/A class by the CORS series.
 - 12.5.13.1.If CORS decides that you need to be moved to Pro N/A, you will keep 50% of your season points from Amateur N/A.

12.6. SPORTSMAN

- 12.6.1. This will be a true Stock/Beginners class. This class is for individuals who have never raced or are still learning.
- 12.6.2. This class is reserved to cars as they are shipped from the manufactures, except the vehicle safety rules stated in section 2.
- 12.6.3. Body – vehicle must maintain an appearance like the make and model as shipped from the manufacture.
- 12.6.4. No turbo or supper charged machine allowed.
- 12.6.5. No nitros – any nitros tanks must be removed from the machine.
- 12.6.6. The engine must be an OEM UTV specifically manufactured production engine and must match the make of the machine.
- 12.6.7. All makes and all engines must be stock bore size and stroke as shipped from the manufacture.
- 12.6.8. No billet cylinders.
- 12.6.9. Suspension points must remain in the stock location.
- 12.6.10. Tread width = 72.5" from outside of tire to outside of tire.
- 12.6.11. Ride height = 10" from the lowest part of the frame.

- 12.6.12. Tires - Any tire that can be purchased online as a utv / sxs tire and is readily available is approved.
 - 12.6.12.1.No tires designed for circle track racing will be allowed.
 - 12.6.12.2.Hoosier UTV Knobby tire will be allowed.
 - 12.6.12.3.Goodyear, American Racer, McCreary, Maxxis short course tire will not be allowed.
 - 12.6.12.4.Rally tires and snow tires are allowed.
- 12.6.13. Weight (all weights are with the driver in the car)
 - 12.6.13.1.Polaris – 1600
 - 12.6.13.2.Yamaha YXZ – 1775
 - 12.6.13.3.Honda Talon – 1700
 - 12.6.13.4.Can Am – 1600
 - 12.6.13.5.Arctic cat – 1775
 - 12.6.13.6.Kawasaki krx 1000 – 1750
- 12.6.14. If your lap times are considerably faster than the rest of the class, you will be moved to the Amateur N/A class by the CORS series.
 - 12.6.14.1.If CORS decides that you need to be moved to AMATEUR N/A, you will keep 50% of your season points from Sportsman.

12.7. YOUTH MODIFIED

- 12.7.1. 12 years or older.
- 12.7.2. This class is reserved to cars as they are shipped from the manufactures, except the vehicle safety rules stated in section 2.
- 12.7.3. Body – vehicle must maintain an appearance like the make and model as shipped from the manufacture.
- 12.7.4. No turbo or super charged machine allowed.
- 12.7.5. No nitros – any nitros tanks must be removed from the machine.
- 12.7.6. The engine must be an OEM UTV specifically manufactured production engine and must match the make of the machine.
- 12.7.7. Tires - Any tire that can be purchased online as a utv / sxs tire and is readily available is approved.
 - 12.7.7.1. No tires designed for circle track racing will be allowed.
- 12.7.8. Must have stock ECU – no stand-alone ECU's.
- 12.7.9. A co-driver can ride with in the machine. You are not allowed to operate the machine in any means.
 - 12.7.9.1. You can steer the machine to get them from an incident.
 - 12.7.9.2. The co-driver cannot be operating the machine to pass another car.
- 12.7.10. Suspension points must remain in the stock location.

12.8. YOUTH STOCK

- 12.8.1. 800cc max must be used.
- 12.8.2. 12 years or older.
- 12.8.3. This class is reserved to cars as they are shipped from the manufactures, except the vehicle safety rules stated in section 2.
- 12.8.4. Body – vehicle must maintain an appearance like the make and model as shipped from the manufacture.
- 12.8.5. No turbo or super charged machine allowed.
- 12.8.6. No nitros – any nitros tanks must be removed from the machine.
- 12.8.7. The engine must be an OEM UTV specifically manufactured production engine and must match the make of the machine.
- 12.8.8. Tires - Any tire that can be purchased online as a utv / sxs tire and is readily available is approved.
 - 12.8.8.1. No tires designed for circle track racing will be allowed.
- 12.8.9. Must have stock ECU – no stand-alone ECU's.
- 12.8.10. A co-driver can ride with in the machine. You are not allowed to operate the machine in any means.
 - 12.8.10.1.You can steer the machine to get them from an incident.
 - 12.8.10.2.The co-driver cannot be operating the machine to pass another car.
- 12.8.11. Suspension points must remain in the stock location.
 - 12.8.11.1.Suspension must remain stock
- 12.8.12. If your lap times are considerably faster than the rest of the class, you will be moved to the Youth Modified class by the CORS series.
 - 12.8.12.1.If CORS decides that you need to be moved to Youth Modified, you will keep 50% of your season points from Youth Stock.

12.9. KIDS MODIFIED

- 12.9.1. 204cc max must be used.
- 12.9.2. 12 years or younger.
- 12.9.3. This class is reserved to cars as they are shipped from the manufactures, except the vehicle safety rules stated in section 2.
- 12.9.4. Body – vehicle must maintain an appearance like the make and model as shipped from the manufacture.
- 12.9.5. No turbo or super charged machine allowed.
- 12.9.6. No nitros – any nitros tanks must be removed from the machine.
- 12.9.7. The engine must be an OEM UTV specifically manufactured production engine and must match the make of the machine.
- 12.9.8. Tires - Any tire that can be purchased online as a utv / sxs tire and is readily available is approved.
 - 12.9.8.1. No tires designed for circle track racing will be allowed.
- 12.9.9. Must have stock ECU – no stand-alone ECU's.
- 12.9.10. A co-driver can ride with in the machine. You are not allowed to operate the machine in any means.
 - 12.9.10.1.You can steer the machine to get them from an incident.
 - 12.9.10.2.The co-driver cannot be operating the machine to pass another car.

12.10. KIDS LIMITED

- 12.10.1. This will be a limited stock; race experience expected.
- 12.10.2. 180cc max must be used.
- 12.10.3. 12 years or younger.
- 12.10.4. This class is reserved to cars as they are shipped from the manufactures, except the vehicle safety rules stated in section 2.
- 12.10.5. Body – vehicle must maintain an appearance like the make and model as shipped from the manufacture.

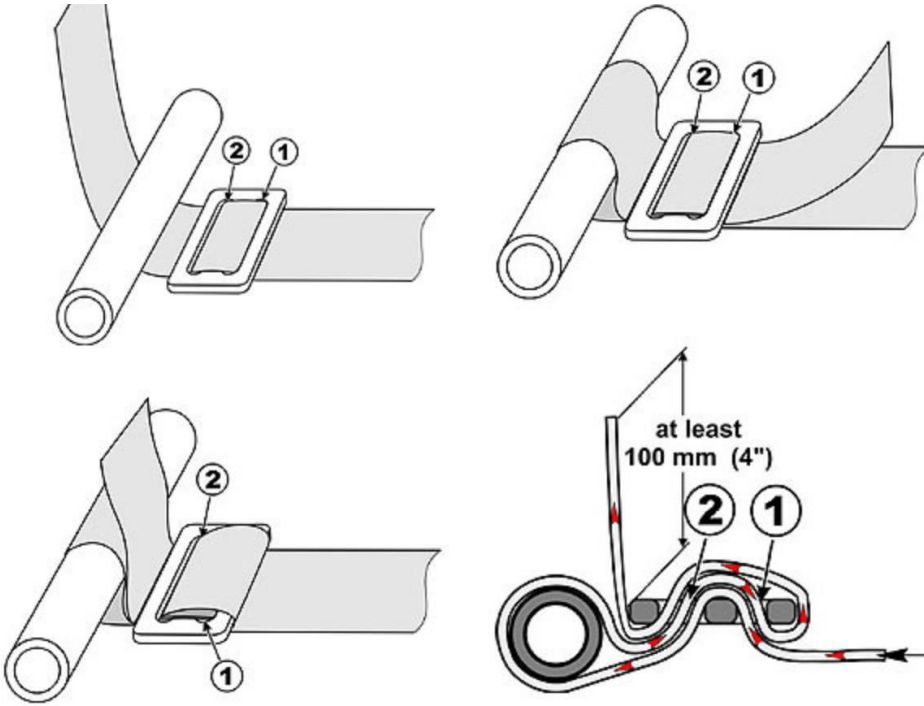
- 12.10.6. No turbo or super charged machine allowed.
- 12.10.7. No nitros – any nitros tanks must be removed from the machine.
- 12.10.8. The engine must be an OEM UTV specifically manufactured production engine and must match the make of the machine.
- 12.10.9. Tires - Any tire that can be purchased online as a utv / sxs tire and is readily available is approved.
 - 12.10.9.1.No tires designed for circle track racing will be allowed.
- 12.10.10. Must have stock ECU – no stand-alone ECU's.
- 12.10.11. A co-driver can ride with in the machine. You are not allowed to operate the machine in any means.
 - 12.10.11.1. You can steer the machine to get them from an incident.
 - 12.10.11.2. The co-driver cannot be operating the machine to pass another car.
- 12.10.12. Suspension points must remain in the stock location.
- 12.10.13. Tread width must not be any wider than 52" outside of tire to outside of tire.
- 12.10.14. If your lap times are considerably faster than the rest of the class, you will be moved to the Kids Modified class by the CORS series.
 - 12.10.14.1. If CORS decides that you need to be moved to Kids Modified, you will keep 50% of your season points from Kids Limited.

12.11. KIDS STOCK

- 12.11.1. This will be a true stock; beginners class.
- 12.11.2. 180cc max must be used.
- 12.11.3. 12 years or younger.
- 12.11.4. This class is reserved to cars as they are shipped from the manufactures, except the vehicle safety rules stated in section 2.
- 12.11.5. Body – vehicle must maintain an appearance like the make and model as shipped from the manufacture.
- 12.11.6. No turbo or super charged machine allowed.
- 12.11.7. No nitros – any nitros tanks must be removed from the machine.
- 12.11.8. The engine must be an OEM UTV specifically manufactured production engine and must match the make of the machine.
- 12.11.9. Tires - Any tire that can be purchased online as a utv / sxs tire and is readily available is approved.
 - 12.11.9.1.No tires designed for circle track racing will be allowed.
- 12.11.10. Must have stock ECU – no stand-alone ECU's.
- 12.11.11. A co-driver can ride with in the machine. You are not allowed to operate the machine in any means.
 - 12.11.11.1. You can steer the machine to get them from an incident.
 - 12.11.11.2. The co-driver cannot be operating the machine to pass another car.
- 12.11.12. Suspension points must remain in the stock location
- 12.11.13. Suspension must remain stock
- 12.11.14. Tread width must not be any wider than 52" outside of tire to outside of tire.
- 12.11.15. If your lap times are considerably faster than the rest of the class, you will be moved to the Kids Limited class by the CORS series.
 - 12.11.15.1. If CORS decides that you need to be moved to Kids Limited, you will keep 50% of your season points from Kids Stock.

17 DIAGRAMS

DOUBLE PASSING BELTS



PROPERLY MOUNTING HARNESES

