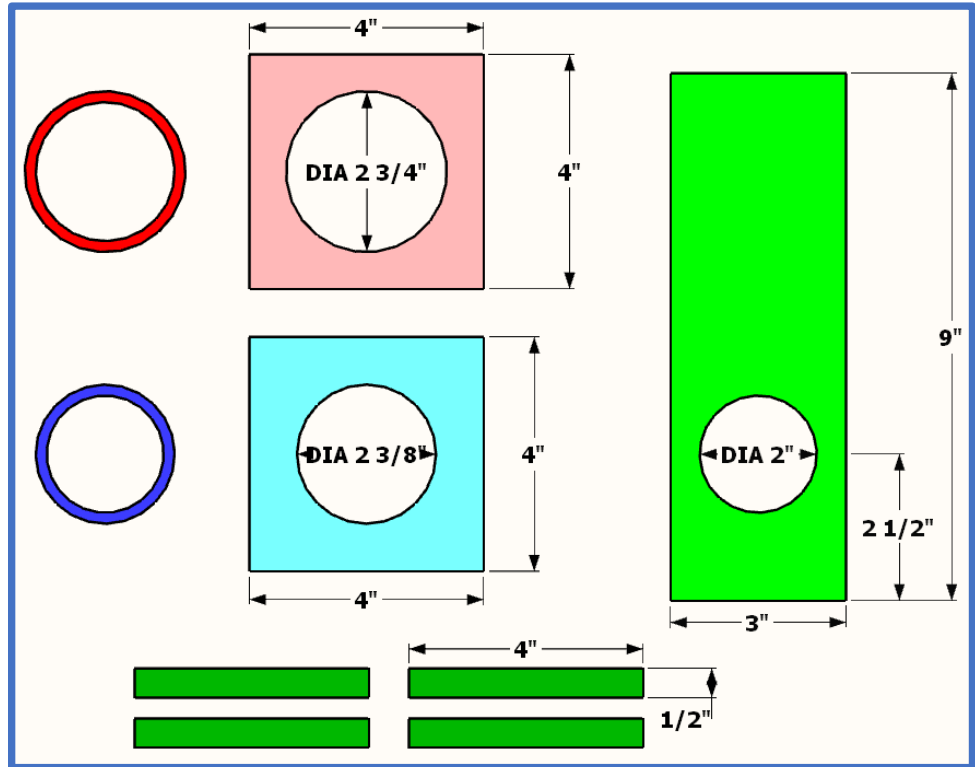
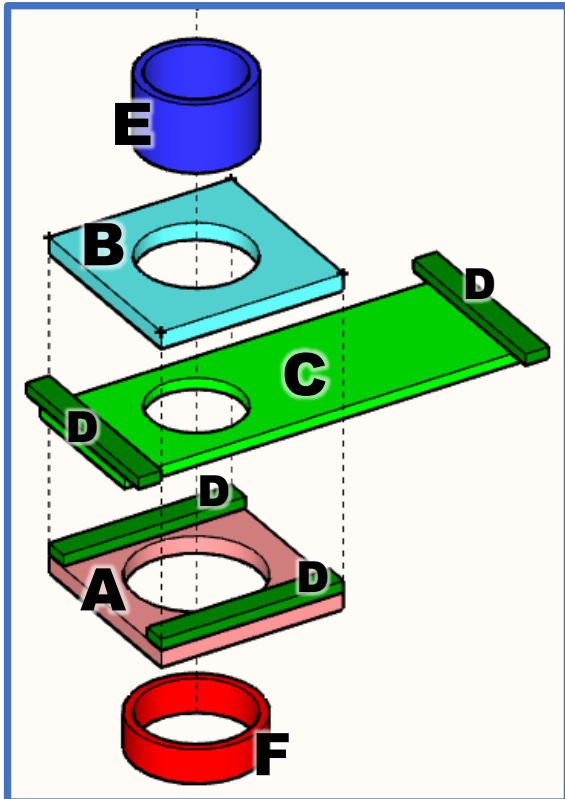


Make blast gates that mate with 2" Schedule 40 PVC, perfect for dust collection using a Shop Vac to small Bench Top Machines. I recommend batching these out when you make them.



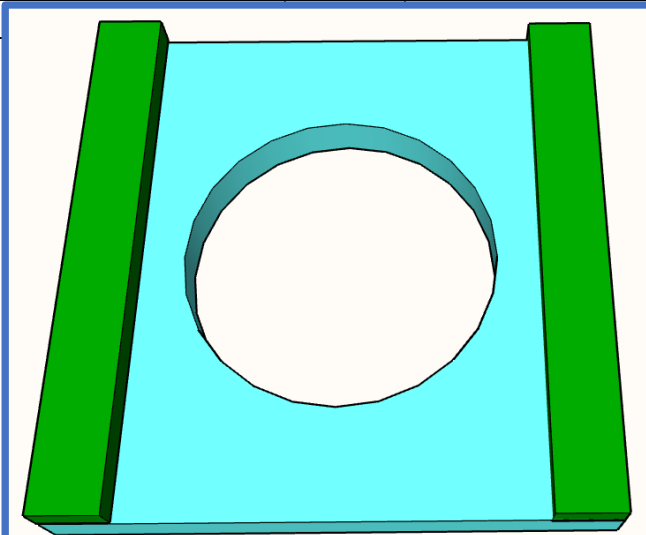
PARTS LIST & CUT SHEET

**Adjust part sizes to fit based on your actual material thicknesses & final sizes*

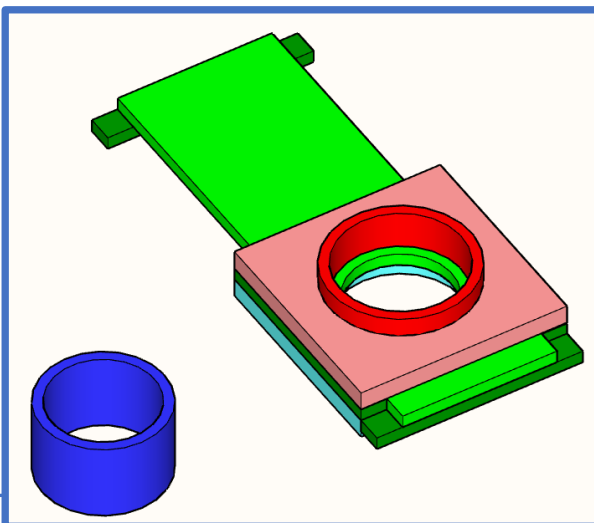
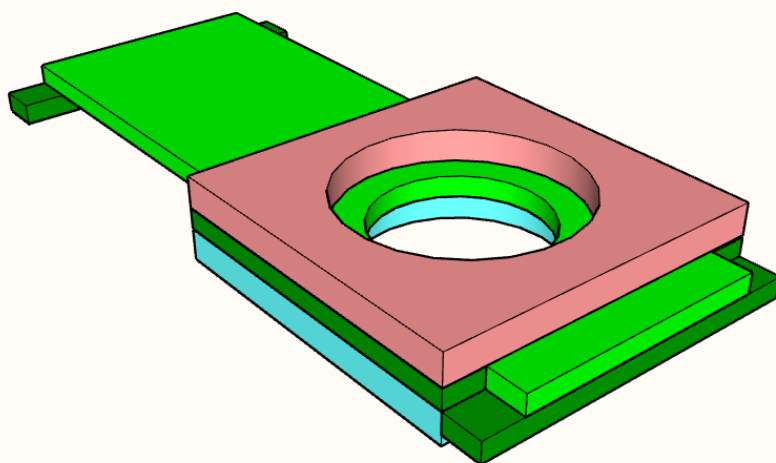
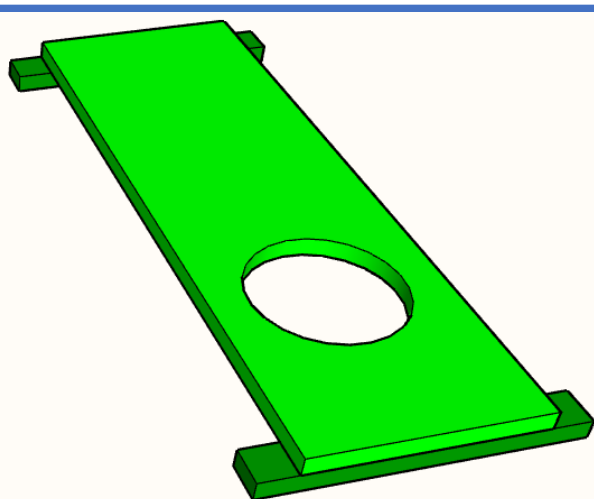
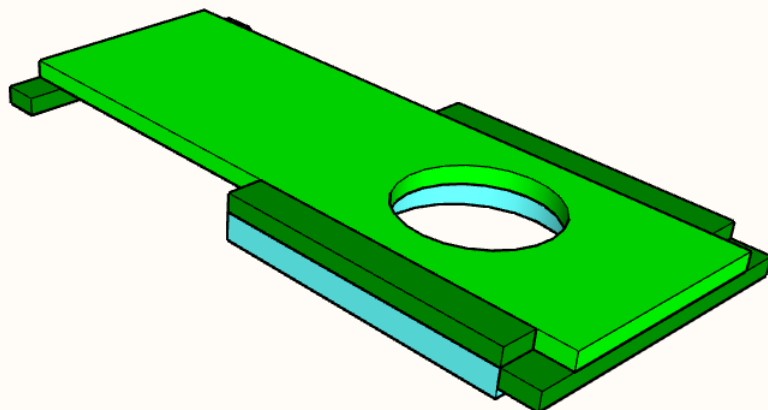
Component	QTY	Dimensions	Description
A	1	4" (W) x 4" (L) x 3/8" (T)	Coupler Gate Half (3/8" or 1/2" Plywood)
B	1	4" (W) x 4" (L) x 3/8" (T)	Pipe Gate Half (3/8" or 1/2" Plywood)
C	1	3" (W) x 9" (L) x 1/4" (T)	Slider (1/4" Luan, Plywood, or Hardboard)
D	4	1 1/2" (W) x 4" (L) x 1/4" (T)	Spacers / Stops (same material as slider)
E	1	2" ID PVC, 1 1/2 - 2" (L)	Length of PVC Pipe

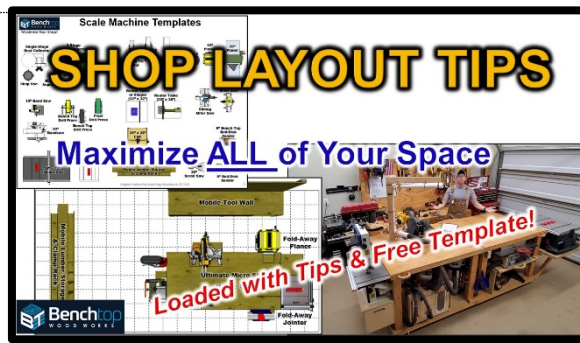
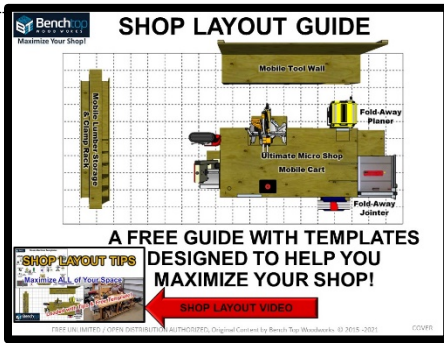
FREE WOODWORKING PLAN

PROJECT: SHOP VAC BLAST GATES



half





Additional Resources

See the Build video or check out ways to Maximize your Shop space on my Websites:

[My Website](#)

[My Youtube Channel](#)

[My Instagram](#)

[Find out about Unlimited Plans on Patreon](#)

[All of my plans are available on Etsy](#)

Plans for Maximizing Your Shop:

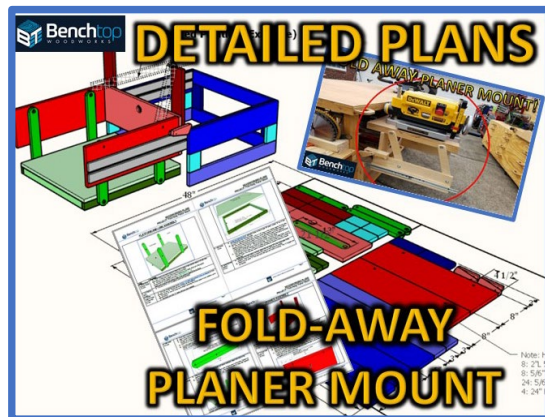
My Shop's Mobile Base:



My Mobile Tool Wall:



My Planer Mount:



My Dust Collection Set-Up:

