

UNITED STATES SHIP
LEFTWICH
(DD-984)



WESTPAC
82 - 83



WESTPAC '82-'83

USS LEFTWICH (DD-984) is the twenty-second **SPRUANCE** Class Destroyer to be designed and built by Ingalls Shipbuilding Division of Litton Industries in Pascagoula, Mississippi. Homeported in San Diego, **LEFTWICH** is assigned to Destroyer Squadron SEVEN.

The **SPRUANCE** Class Destroyer is unique among today's warships in that it is the first major class to be powered strictly by gas turbine engines. **LEFTWICH**, as her sisters, is powered by four General Electric LM-2500 engines. Designed originally for large aircraft, these engines have been modified for marine use and produce 20,000 horsepower each. Her engines, in conjunction with twin controllable-reversible pitch propellers, are capable of moving **LEFTWICH** through the water at speeds in excess of 30 knots and give her a degree of maneuverability unequalled by any other warship her size.

Built with future growth in mind, **LEFTWICH's** design is modular in nature thus allowing for the easy installation of entire subsystems within the ship. This makes **LEFTWICH** a ship of the future as well as the present. Her modular construction and the consequent ease with which she can accept the installation of new weapons and electronics systems destined **LEFTWICH** to be a proving ground for new military technology.

Crew comfort and habitability were also of prime consideration in **LEFTWICH's** design. Berthing areas are very spacious and considerable care was taken to equip the ship with features uncommon to most destroyers. Such features include a ship's library, crew's lounge, a well equipped gymnasium, and many other items aimed at crew comfort. Enhancing these specifically designed-in

comforts is the added benefit of a much reduced required manning level resulting from the incorporation of the many automated weapons and engineering systems.

As a highly versatile multi-mission destroyer, **LEFTWICH** is capable of operating independently or in company with amphibious or carrier task forces. Although equipped to handle a wide variety of mission areas, **LEFTWICH's** primary mission is Anti-Submarine Warfare. **LEFTWICH** possesses the most advanced ASW equipment in existence to facilitate her accomplishment of this complex and demanding task. The ship is equipped with a sophisticated sonar, the SQS-53, that is directly integrated with a third generation, digital computer system, the Naval Tactical Data System. In addition to her sonar, **LEFTWICH's** ASW weapons suite, an Anti-Submarine Rocket (ASROC) and two triple barreled Mark 32 torpedo tubes, also complexes with NTDS. This integrated combat system provides **LEFTWICH** with an enhanced target information processing capability and an extremely fast threat reaction time.

LEFTWICH also boasts two 5-inch/54 caliber Mark 45 fully automatic gun mounts controlled by the digital Mark 86 Fire Control System. Also integrated with NTDS, these systems allow **LEFTWICH** to excel in her secondary mission areas of Naval Gunfire Support, Surface Warfare, and Anti-Air Warfare.

In conclusion, **USS LEFTWICH** constitutes a destroyerman's dream as she incorporates the best of a technology unequalled by any other Navy in the world. Her exceptional propulsion system and fully integrated combat system combine with her modular construction to make **LEFTWICH** a platform not to be surpassed.

In Memorium



*LCDR Kenneth M. Kraper
13 January 1947 - 11 December 1982*

*EXCERPT FROM A TAPE RECORDING
MADE BY LCDR KRAPER TO HIS SON
PATRICK
ON THE DAY OF HIS BIRTH 28
NOVEMBER 1981*

"I have a lot of mixed emotions because I wasn't with you this morning when you came into the world. Most

of them because as a father I feel that's my place to be, that's where I wanted to be. On the other hand I've been with the Navy now for 14 years and I think that it's a proud profession to be in - the security of your country. I think it is an honorable profession and my country felt that they needed me here as a way of helping to keep our freedom and I didn't have any qualms about coming. I love my country."

Eulogy

LCDR Ken Kraper's association with **LEFTWICH** was brief, too brief. Counting some of our pre-deployment time we knew him only a matter of a few months. He was embarked with us for only five weeks of this deployment. Many of you here probably didn't get to know him well and I would like to tell you a little bit about him. Ken was only 35 when he died. He would have been 36 in January. He came from the mid-west. He had had a couple of years of college behind him when he enlisted in the Navy in June 1967. He was picked up for the NESEP program, went to Purdue University, and was commissioned in December 1973. He won his wings in March 1975. He served in Antarctica with VXE6 and he had a tour in Washington as Aide and Flag Lieutenant to the District Commandant. In 1980 Ken became a LAMPS Pilot, one of that rare breed of aviator who is also a destroyerman. He went to sea in **COOK** last year for an Indian Ocean/Battle Group deployment. Having only returned from that deployment last March, he deployed with us this October as our DET OIC and Ship's Aviation Officer. A week ago last Saturday Ken Kraper and his aircrew were on duty flying their fragile machine on a mission in the pitch dark early hours, in the rain, with no visible horizon. They were coming aboard one of our sister ships under these conditions when something went wrong. We may never know what happened to cause the crash of MAGUS 34 into the sea, but we do know that at that instant LCDR Kenneth Michael Kraper gave up his life in the service of his country.

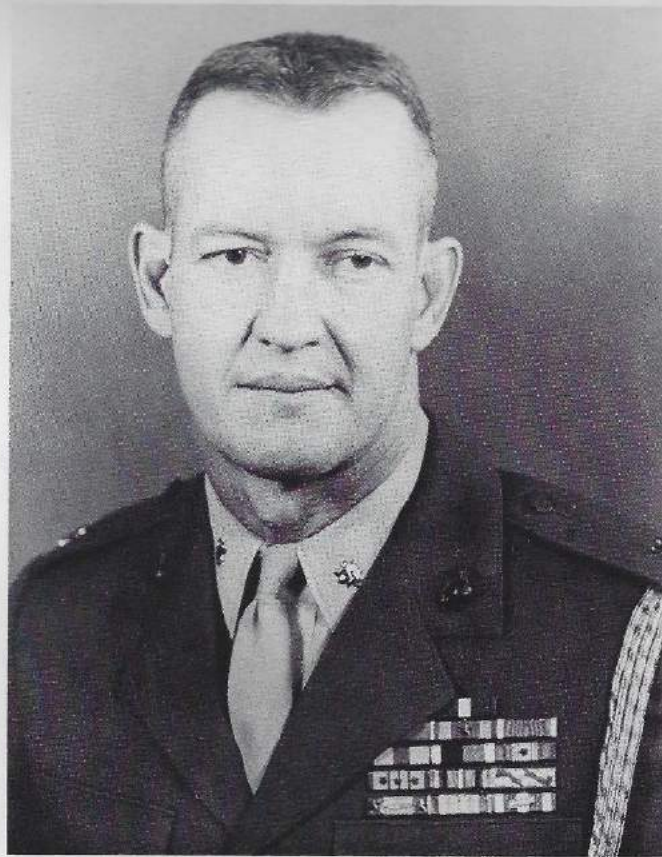
I said that I wanted to tell you something about this man but I haven't touched the essential part yet. Ken Kraper was a very impressive fellow. When he joined our ship I was immediately taken with his professional, mission-oriented attitude, his desire to do things right - smartly and safely, his enthusiastic and knowledgeable participation in CIC during ASW exercises whenever he was not in the air himself.

But shortly I discovered much more about the person. Ken was that rare kind of guy that everyone instinctively likes. His quick wit, ready smile and easy laughter helped us all through some low points in our deployment. His humor was always positive - he never got a laugh at another's expense. He added fun and spontaneity to our wardroom. He was a friend and we shall miss him.

He was also a fine family man. I had a few occasions to meet him together with his wife Mary. All the evidence of a rich, loving marital relationship was obviously present. Our loss has been devastating, but consider what it means to his widow, who, it happens, is pregnant with twins, and to his infant son Partick who will never know first hand the man his father was.

Ken Kraper was, quite simply, a very fine man. We who knew him are all diminished by his death, but still so much richer for having known him at all.

Eulogy delivered by
Commanding Officer
USS LEFTWICH (DD984)
21 December 1982



LCOL W. G. Leftwich, Jr., USMC

Lieutenant Colonel William G. Leftwich, Jr., was born on April 28, 1931 in Memphis, Tenn., and graduated from Central High School in that city. He was commissioned a Marine Second Lieutenant on June 5, 1953 upon graduation from the United States Naval Academy. As brigade captain in his senior year at the Naval Academy, he was specially commended at graduation for exemplary officer like qualities which contribute "to the development of naval spirit and loyalty within the Brigade."

Upon entering the Marine Corps, he completed The Basic School at Marine Corps Schools, Quantico, VA., in January 1954, and later served as a rifle platoon commander with the 2nd Marine Division at Camp Lejeune, N. C. During 1955-56, he served with the 3rd Marine Division on Okinawa. On his return to the United States, he was stationed at Camp Pendleton, California, where he was promoted to captain in July 1957. He then began a three-year assignment at the Naval Academy, serving as a company officer. An excellent athlete himself, he also voluntarily performed collateral duty as assistant varsity tennis coach and battalion football coach.

In 1960, he rejoined the 2nd Marine Division, serving as a company commander until 1962 when he was named aide-de-camp to the Commanding General. In June 1963, he was assigned as aide to the Commandant, Marine Corps Schools, Quantico. He was promoted to major in July 1964. He later completed a course of study in the Vietnamese Language prior to reporting for duty in Vietnam in January 1965 as Assistant Senior Advisor to the Vietnamese Marine Brigade.

Joining Task Force Alfa, he participated in 27 major operations against the Viet Cong in the central highlands of Vietnam, and spent more than 300 days in the field. He was wounded in the battle of Hoai An, March 9, 1965 and, besides the Purple Heart, was awarded the Navy Cross for extraordinary heroism. According to his citation, he "... played a major part in all phases of the successful relief of the village of Haoi An, which was under heavy enemy attack by two Viet Cong battalions ... By his own personal example ... he led the attack ... Despite injuries by enemy machine-gun bullets in the back, cheek, and nose, he went to the aid of a mortally wounded comrade ... and delayed his own evacuation until he could call for

additional air strikes and brief the task force commander of the situation."

He returned to the United States in January 1966, served as an instructor at the Basic School, then completed the Command and Staff College in June 1967 and was promoted to Lieutenant Colonel in November 1967 while serving as a systems analyst with the Manpower Management Information Branch, G-1 Division. He later became head of the Systems Analysis Section.

In 1968, LtCol. Leftwich was selected by the Under Secretary of the Navy to be his Special Assistant and Marine Corps Aide. He served in this capacity under the Honorable Charles F. Baird, and Mr. Baird's successor as Under Secretary of the Navy, the Honorable John W. Warner.

In April 1970, he began his second tour of duty in Vietnam, serving initially as an infantry battalion commander with the 2nd Battalion, First Marines. On June 30, he assumed duty as Commanding Officer of the 1st Reconnaissance Battalion, 1st Marine Division (Reinforced).

On November 18, 1970, LtCol. Leftwich was killed in a helicopter crash during an emergency extraction of one of his reconnaissance teams. In accordance with his practice of accompanying every emergency extraction called for by his reconnaissance teams, he was serving as senior "extract officer" for such a mission on the day of his death. The team had incurred casualties and requested an emergency extraction from enemy-infested territory in an area beginning to be enveloped by dense fog. The team was extracted under LtCol. Leftwich's personal supervision, then, the helicopter began its ascent, it crashed into a mountainside in enemy territory, killing all aboard.

A partial list of his medals and awards includes: The Navy Cross, the Silver Star (posthumous), the Legion of Merit with Combat "V" and two gold stars, the Meritorious Service Medal, the Air Medal with one gold star, the Purple Heart with two gold stars, and various personal awards from the Republic of Vietnam.

LtCol. Leftwich was survived by his wife, the former Jane Ferrer, and two sons, William G. III, and Scott F. He was also survived by his mother, Mrs. Mattie H. Leftwich of Memphis. His father was deceased.

USS LEFTWICH



DD-984

The Ship's Crest

The colors blue and red are symbolic of loyalty and courage, attributes of Lt. Col. Leftwich who was killed in action in Vietnam. The areas of blue refer to the lowlands or delta areas of Vietnam and the yellow sections rising toward center allude to the highlands. The chevron-like shape, simulating a mountain, stands as a symbol of Lt. Col. Leftwich's courageous effort during an emergency extraction by helicopter from enemy infested territory during which he met his death. The vertical band refers to the numerical designation of the First Marine Division, the organization with which he served. The gold stars allude to the awards of the Legion of Merit, and the silver star in base to the posthumous award of the Silver Star Medal.

The gold cross patty represents the award of the Navy Cross. The trident and dolphins are symbolic of vigilance and maritime dominance.

Ship Design Characteristics

Built by	Ingalls Shipbuilding Division of Litton Industries Pascagoula, Mississippi
Keel Laid	12 November 1976
Christened	27 May 1978
Commissioned	25 August 1979
Sponsor	Mrs. Jane (Leftwich) Michael
Length	563 Feet 4 Inches
Beam	55 Feet
Draft	29 Feet
Displacement	7800 Tons
Complement	Officers — 19 Enlisted — 245
Speed	30+ Knots
Armament	Two 5 inch 54 Cal. Gun Mounts MK 112 ASROC Launcher Two MK 32 Torpedo Tubes NATO Seasparrow Harpoon
Aircraft	One SH-3 or Two SH-2 Helicopters
Propulsion	Four General Electric LM 2500 Marine Gas Turbine Engines (Total - 80,000 Shaft Horsepower)



Commanding Officer Commander James L. Burke

Commander James Lawrence Burke was graduated from the City University of New York in June 1964 and received his commission from the Officer Candidate School in October of that year.

Previous assignments in the destroyer force include: Executive Officer, **USS BRADLEY (FF-1041)**; Engineer Officer, **USS RAMSEY (DEG-2)**; Communications and CIC Officer, **USS GARCIA (DE-1040)**; and Operations and Supply Officer, **USS DARBY (DE-218)**. Additionally, he was Commanding Officer, **USS ANTELOPE (PG-86)** from 1971-1973 and served in the Republic of Vietnam as Officer in Charge of a Swift Boat from 1967-1968.

Other assignments include tours ashore as Director of Training, Fleet Combat Training Center Pacific and Aide and Flag Secretary to Commander, U.S. Naval Forces, Japan. Commander Burke attended the U.S. Naval Destroyer School and is a graduate of the Command and Staff Course at the Naval War College. His military decorations include the Navy Commendation Medal with Combat "V", the Navy Achievement Medal, and the Combat Action Ribbon.

Commander Burke is married to the former Jane Margaret Brodahl of West Covina, California. They and their three sons, Jim Jr., John, and Michael, reside in Fletcher Hills.



*Executive
Officer
Commander Lewis K. Athon*

Commander Lewis Keith Athon was graduated from the University of Idaho in June 1969 and received his commission via the Navy Reserve Officers Training Corps at the same time.

*Previous sea assignments include: Engineer Officer, **USS RICHMOND K. TURNER (CG-20)**; Auxiliaries Officer, **USS CORAL SEA (CV 43)**; Material Officer, COMDESRON Thirty-one staff; and Main Propulsion Assistant, **USS WADDELL (DDG-24)**.*

Other assignments include the Naval Postgraduate School where he received a Master of Science degree in Physics in the Weapons Systems Engineering Curriculum, and 3M Officer on COMCRUDESPAC Staff. His military decorations include the Navy Commendation Medal with Combat "V" and the Combat Action Ribbon.

Commander Athon is married to the former Janice Lynn Hilgesen of Castro Valley, California. They and their son, Michael, live in Chula Vista.

*Commander
Destroyer
Squadron*



Captain Raymond G. Zeller

Captain ZELLER was born in 1937 in Olney, Illinois, the son of Mr. & Mrs. Raymond ZELLER. He was commissioned an Ensign, U. S. Navy on 5 February 1960.

*He has served in several destroyers in both the Atlantic and Pacific, including **USS WILKINSON (DL 5)**, **USS KENNETH D. BAILEY (DDR 713)**, and **USS JOHN W. THOMASON (DD 760)**. He has commanded **USS JOHN WILLIS (DE 1027)**, **USS FURSE (DD 882)** and **USS BROOKE (FFG 1)**.*

Tours ashore have included the U. S. Naval Post Graduate School, Vietnam and Washington, D. C. Washington tours have included assignment as an Operations Analyst in the Systems Analysis Division of OPNAV (OP-96), Military Assistant to the Secretary and Deputy Secretaries of Defense, and most recently as Executive Assistant to the Director, Navy Program Planning, OP-090.

Captain ZELLER's decorations include the Defense Superior Service Medal, Legion of Merit, Meritorious Service Medal, Navy Commendation Medal and Combat V and various campaign and service medals.



334

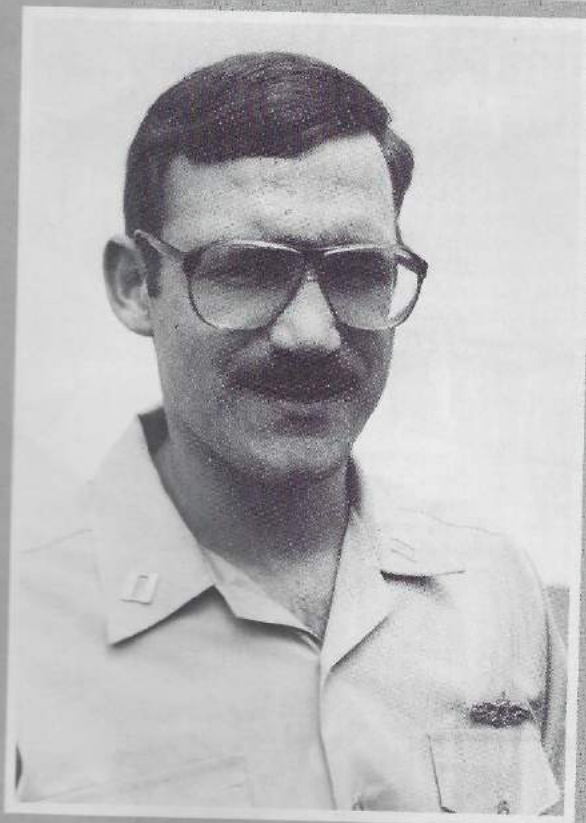
The Crew

Officers

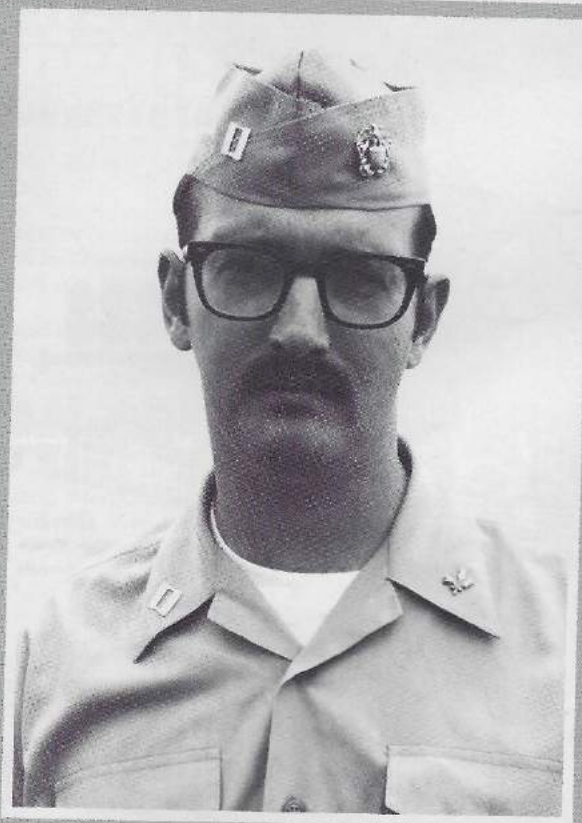
Department Heads



LCDR M. AMES - OPS



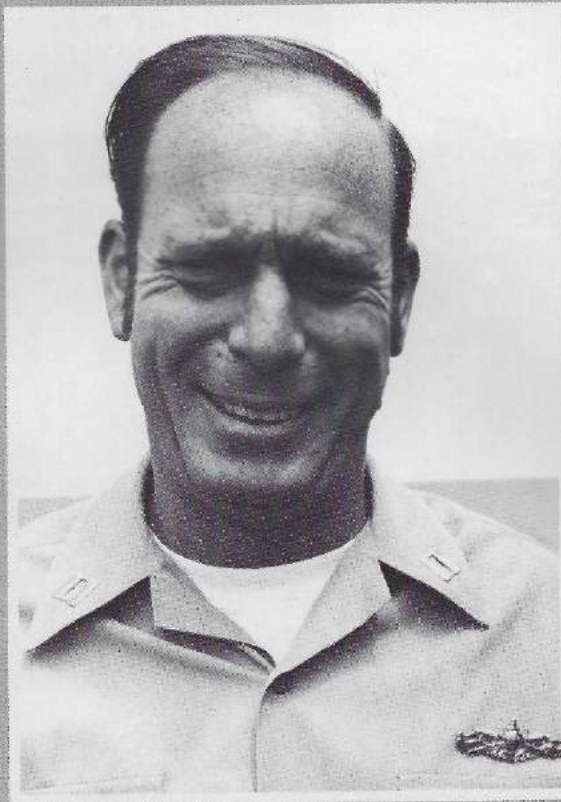
LT C. SOLEM - ENG



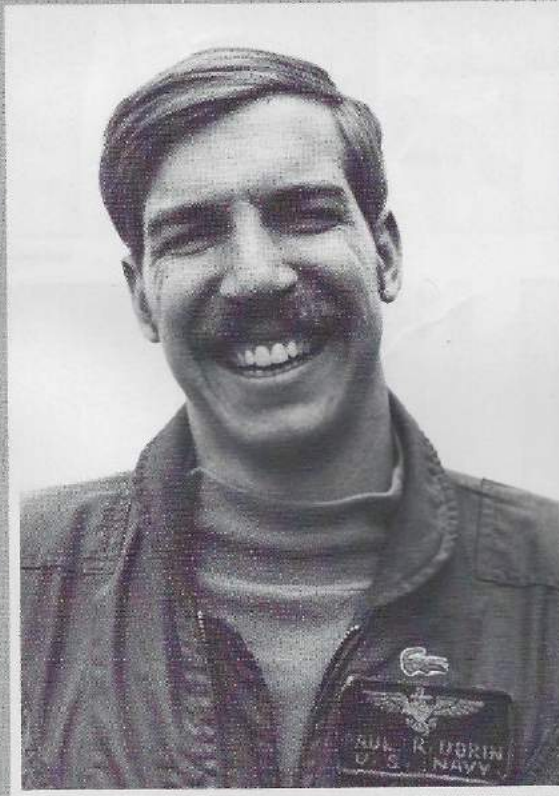
LT P. PETRILL - SUP



LT D. JAGOE - CBS
DEPARTING



LT R. MARTIN - CBS
RELIEVING

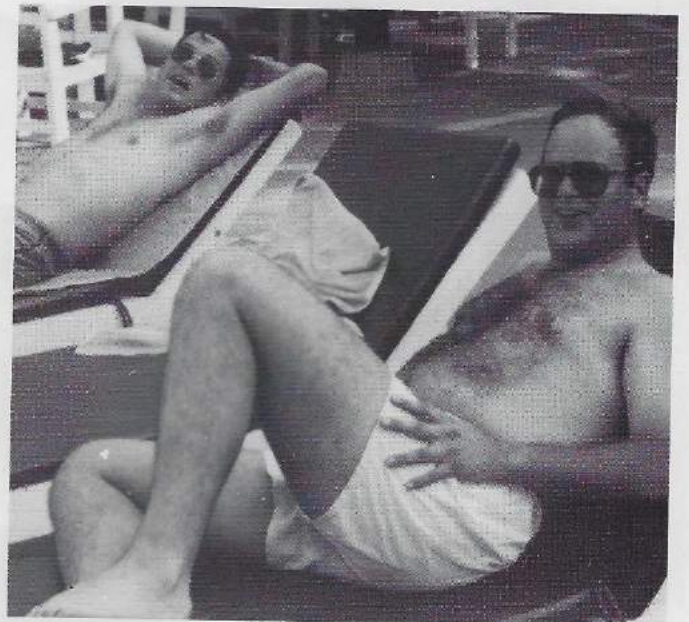
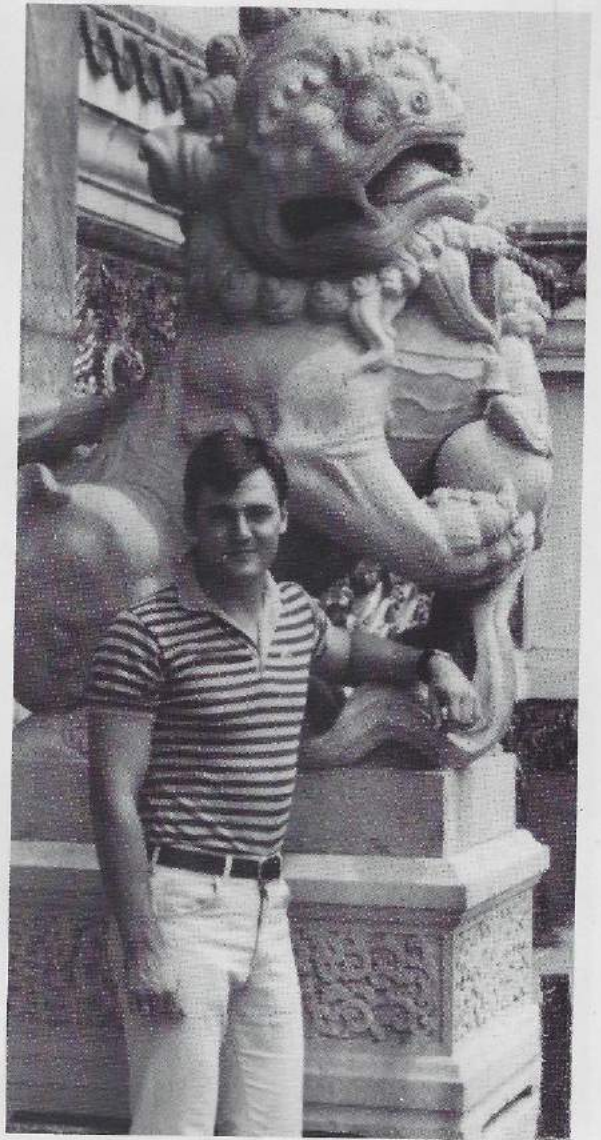


LT P. DORIN - AIR DET



LT G. SHUGA - NAV &
ADMIN

Officers





Dining In





<i>Departed San Diego</i>	<i>30 Oct 82</i>	<i>Arrived Hong Kong</i>	<i>25 Feb 83</i>
<i>Arrived Pearl Harbor</i>	<i>8 Nov 82</i>	<i>Arrived Buckner Bay OK</i>	<i>3 Mar 83</i>
<i>Arrived Subic Bay</i>	<i>25 Nov 82</i>	<i>Arrived Pusan Korea</i>	<i>17 Mar 83</i>
<i>Departed Subic Bay</i>	<i>29 Nov 82</i>	<i>Arrived Subic Bay</i>	<i>22 Mar 83</i>
<i>Returned Subic Bay</i>	<i>30 Nov 82</i>	<i>Arrived Phattaya Beach</i>	<i>02 Apr 83</i>
	<i>**CRASH</i>	<i>Arrived Singapore</i>	<i>15 Apr 83</i>
<i>Departed Subic Bay</i>	<i>06 Feb 83</i>	<i>Arrived Subic Bay</i>	<i>22 Apr 83</i>
<i>Arrived Beppu, Japan</i>	<i>14 Feb 83</i>	<i>Arrived Pearl Harbor</i>	<i>08 May 83</i>
<i>Arrived Sasebo, Japan</i>	<i>18 Feb 83</i>	<i>Arrived San Diego</i>	<i>14 May 83</i>



*Ship's
Party*

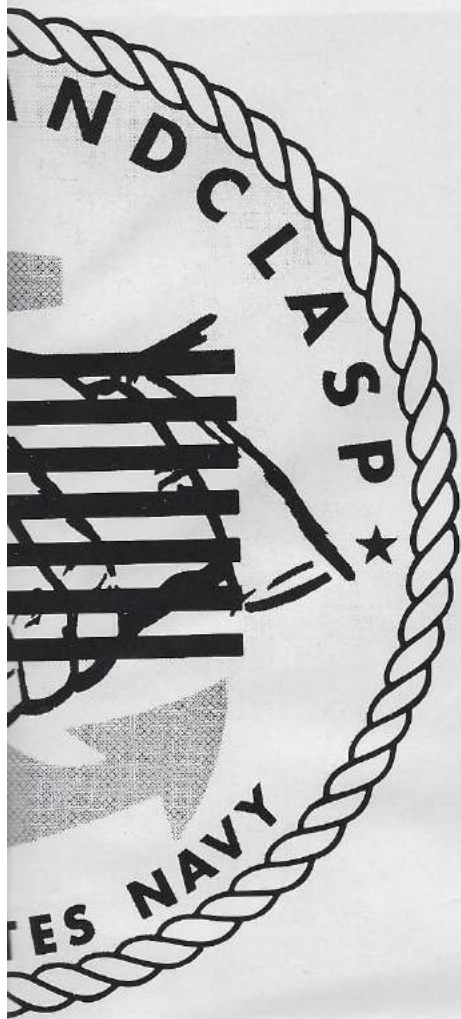
Handclasp

Once again **Leftwich** delivered more project handclasp material than any other destroyer in the third or seventh fleet. 24,700 pounds of supplies worth over \$50,000.00 was distributed by our crew to orphanages in Hong Kong, Korea, Philippines, and Thailand.



0199-004-9000
SND GEN 4900/1 (Rev. 10/65)





PROJECT HANDCLASP PERSONNEL

GSE3 BENNING
 DSSN DOWNING
 OS2 PARR
 SKC LOPEZ
 GMM2 KOST
 IC2 CHISOLM
 ET2 HOPKINS
 OS2 POOL
 HT3 SHERRILL

HMC BOGARD
 EM3 BROWN
 AXC SZASZ
 ET2 RINGER
 ICFN CLAY
 LTJG DUDLEY
 SKSN HARVEY
 ET3 SMITH
 HM3 GLEASON

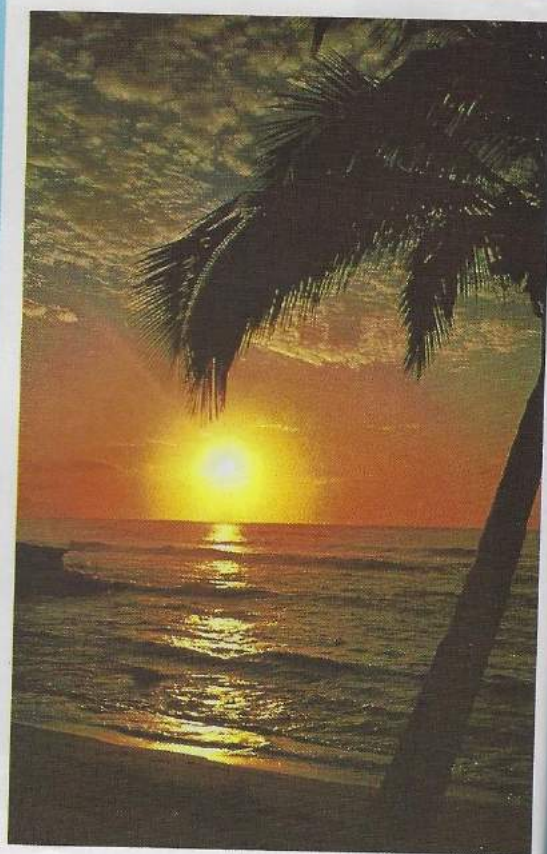
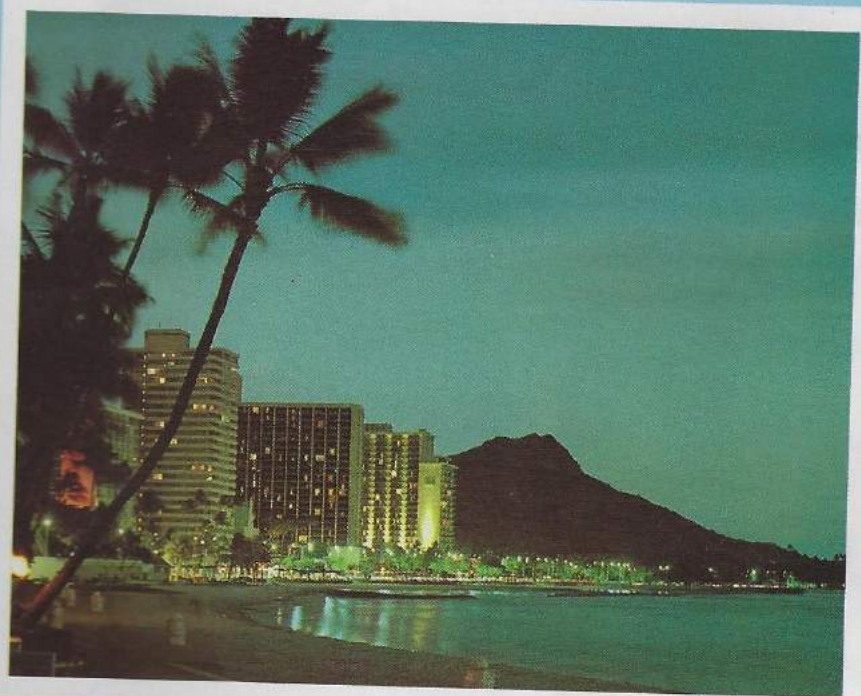
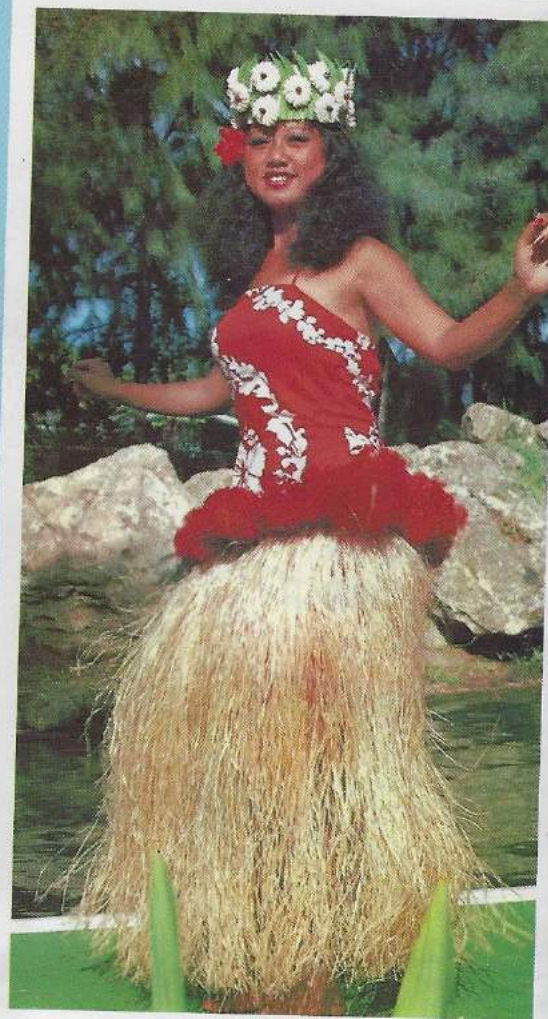
EN3 ANDERSON
 EMFN MITCHELL
 AD2 BEMIS
 HT2 SAWTELLE
 OSC PETERSON
 FTM2 MCALPIN
 SN WELLS
 AS2 STEELE
 ETC NADDY

ENS DAVIS
 EM3 HIGAZI
 ADAN PRINGLE
 LTJG PASARILLA
 BM2 SABINS
 LTJG BOOTH

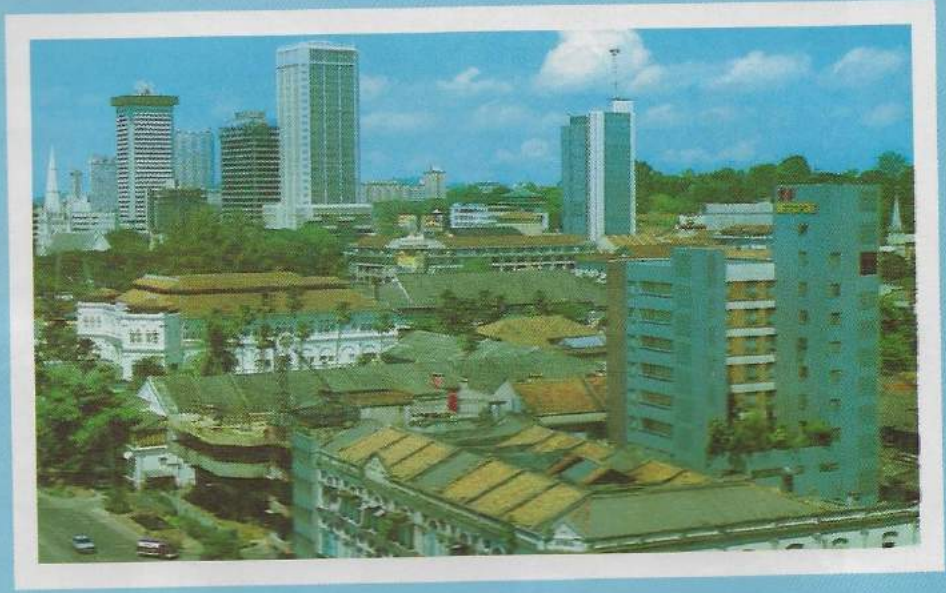
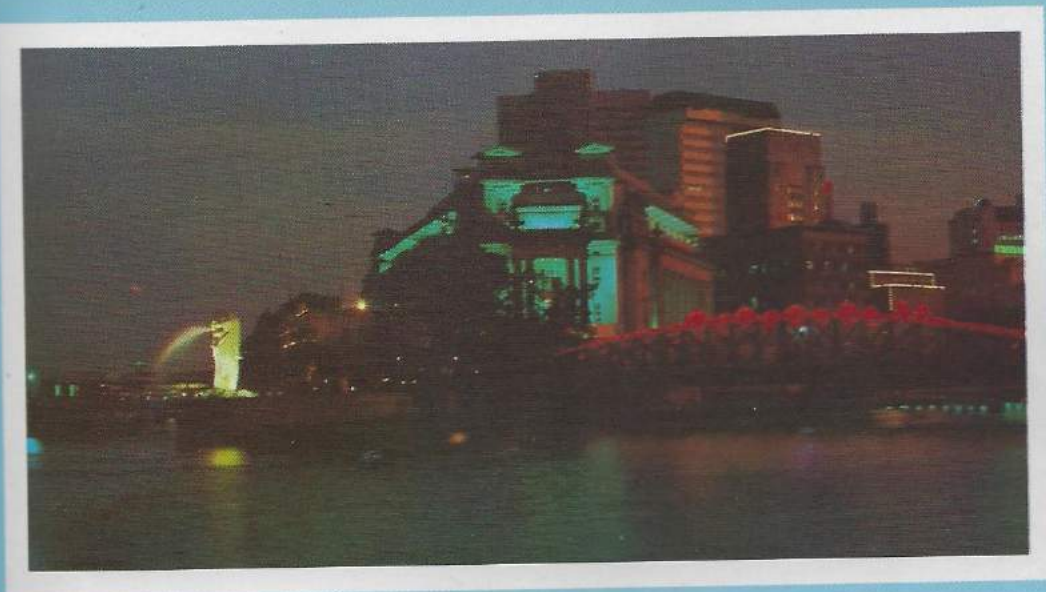




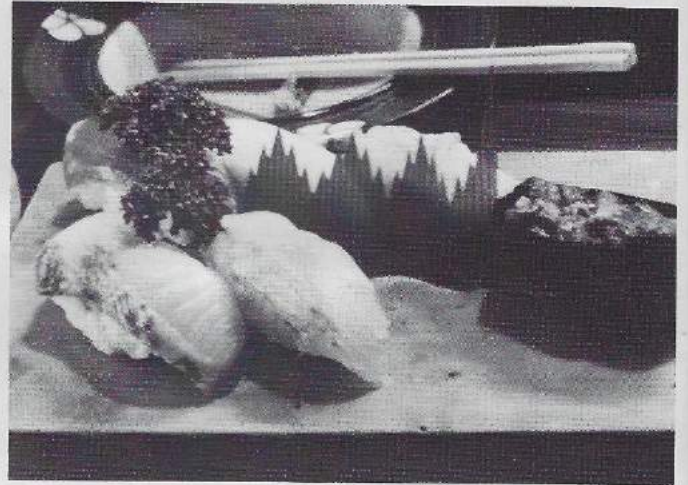
*Pearl Harbor,
Hawaii*

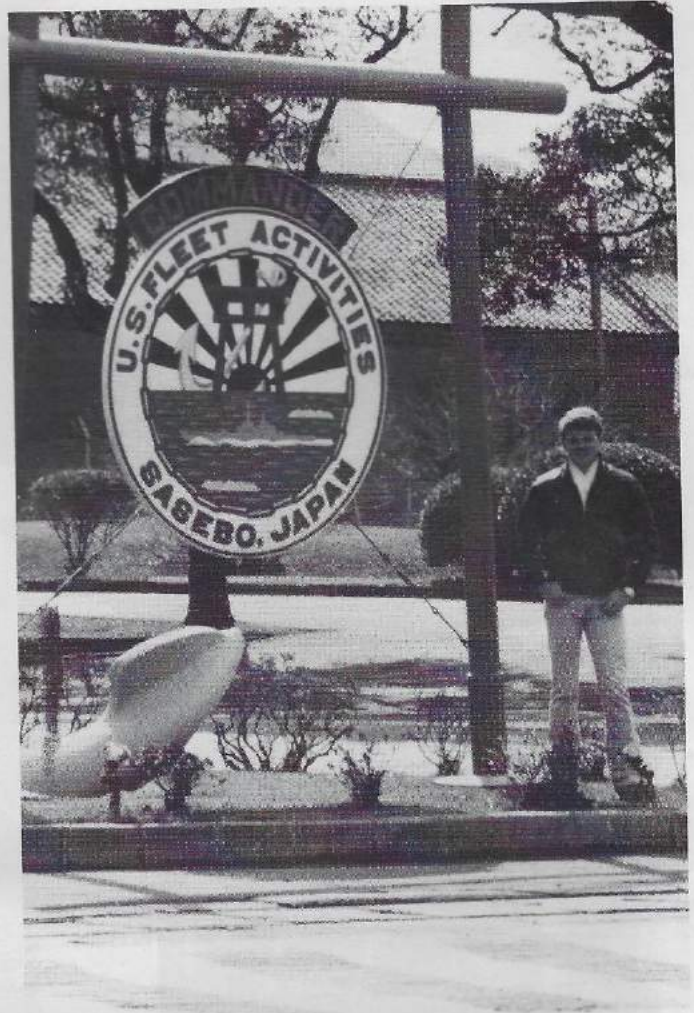


S
i
n
g
a
p
o
r
e



Beppu

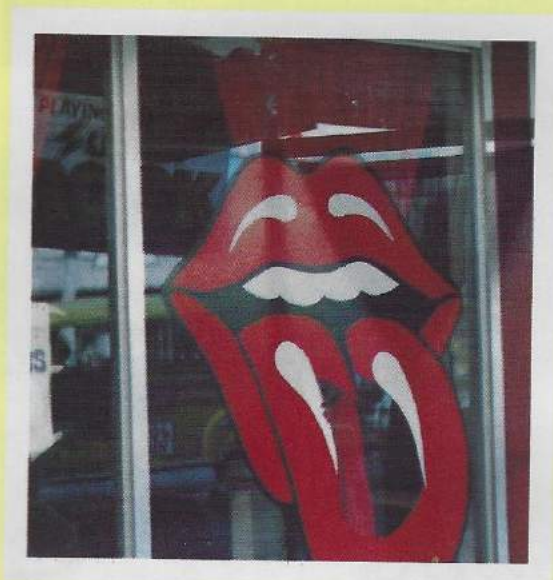


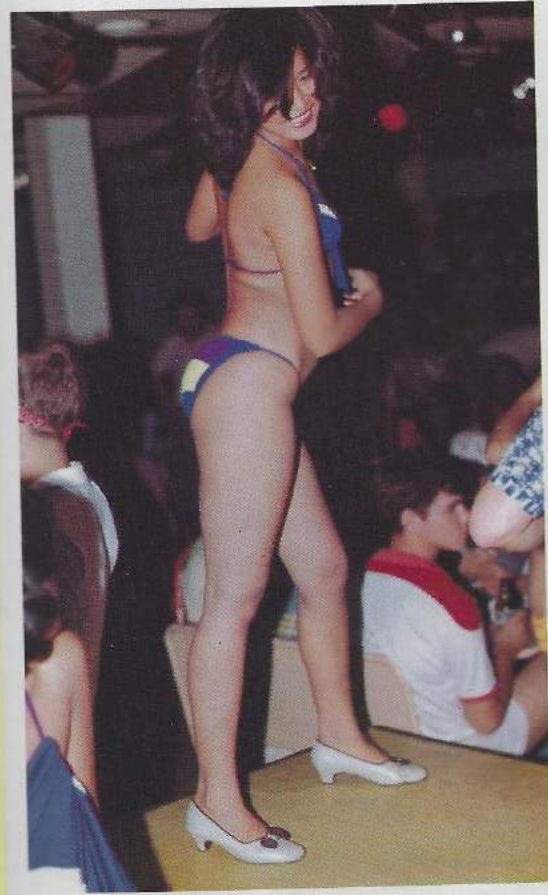


Sasebo

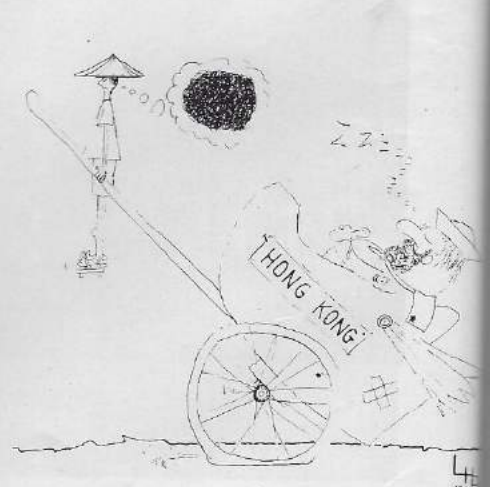
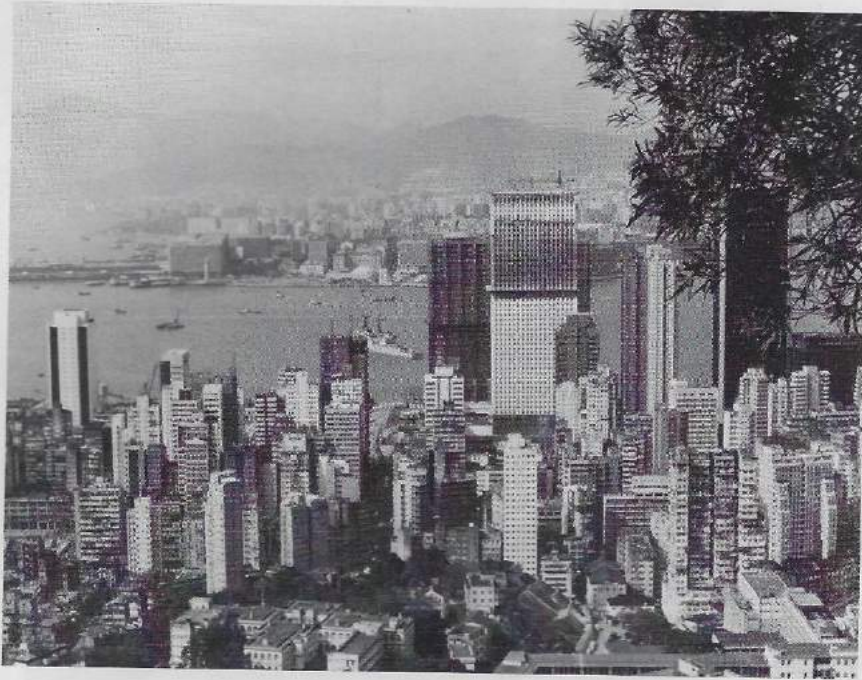


Subic Bay





Hong Kong

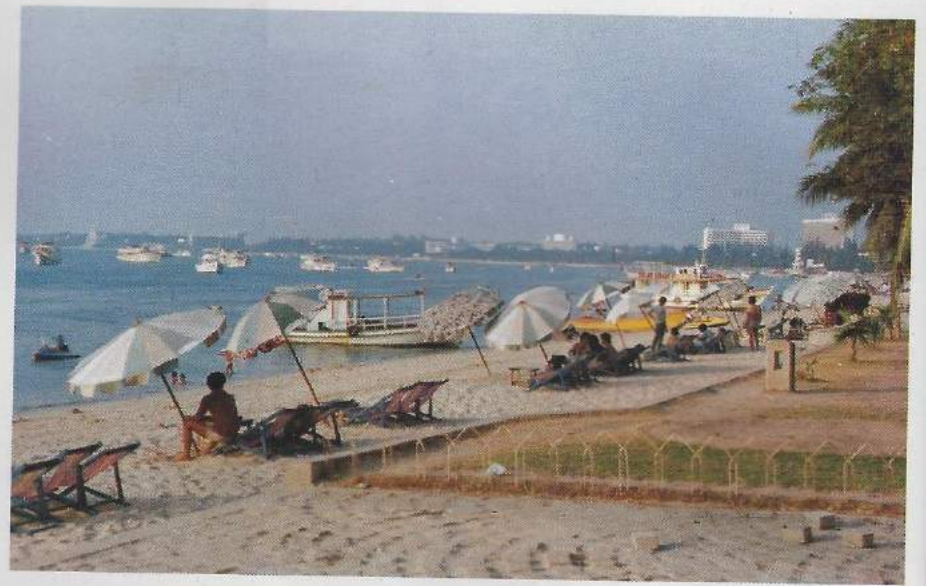


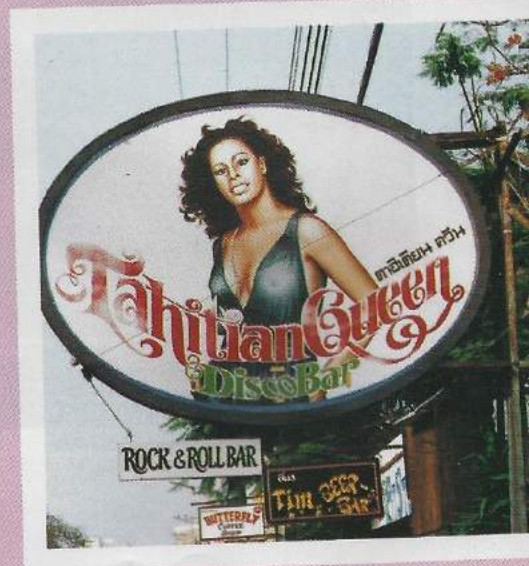
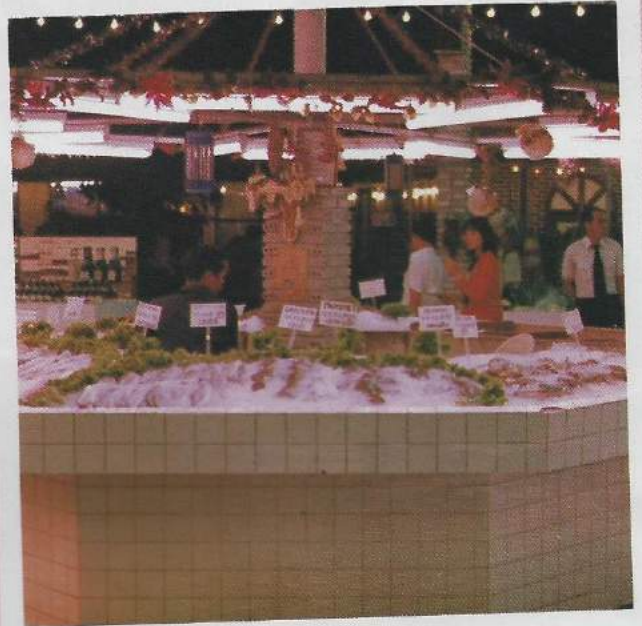


Pusan

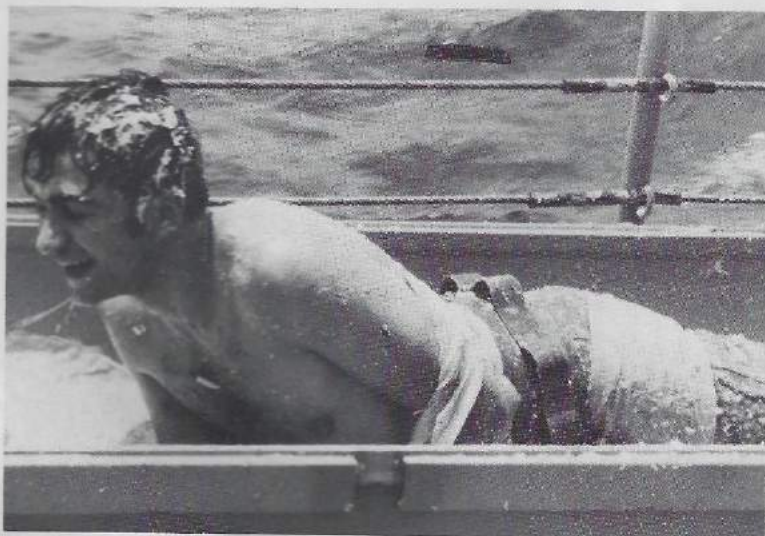
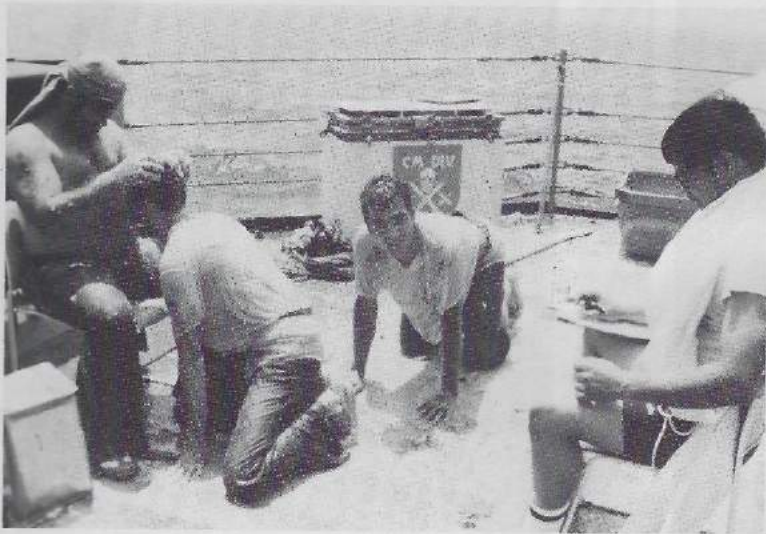


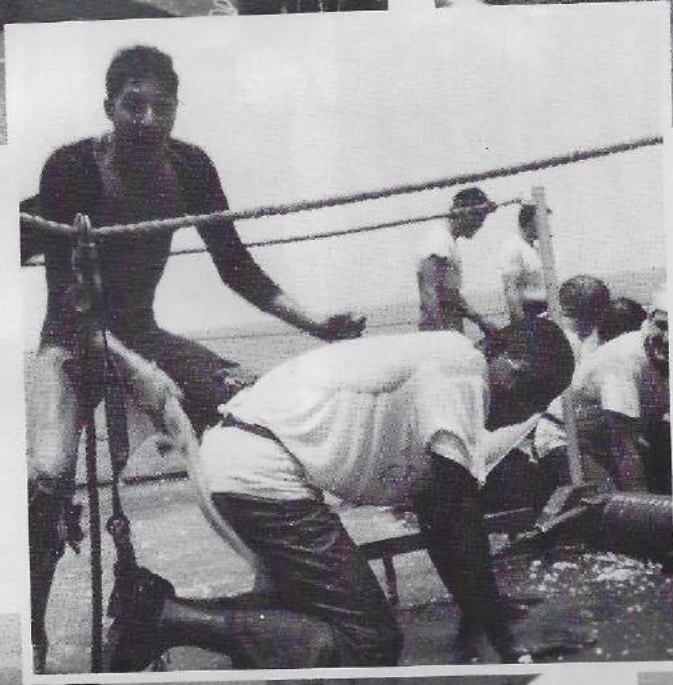
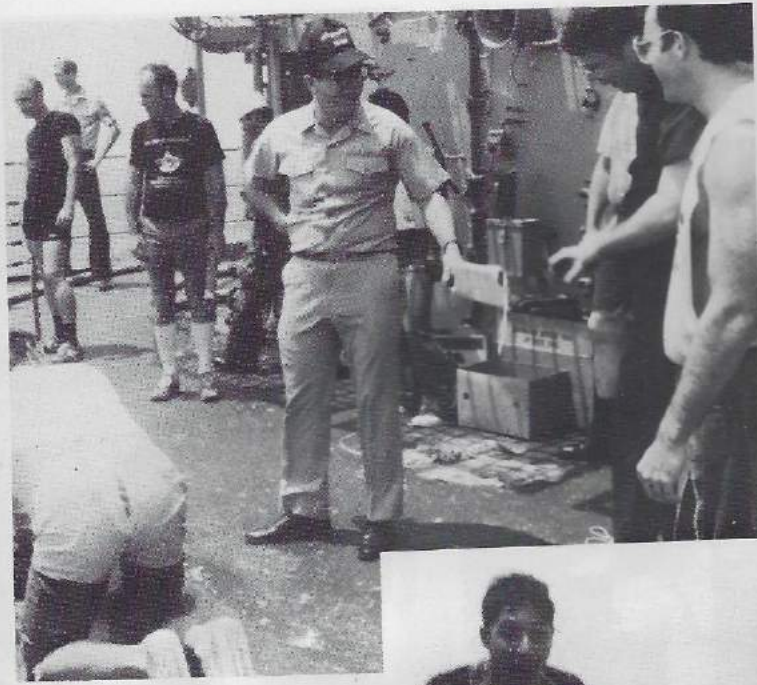
Pattaya Beach





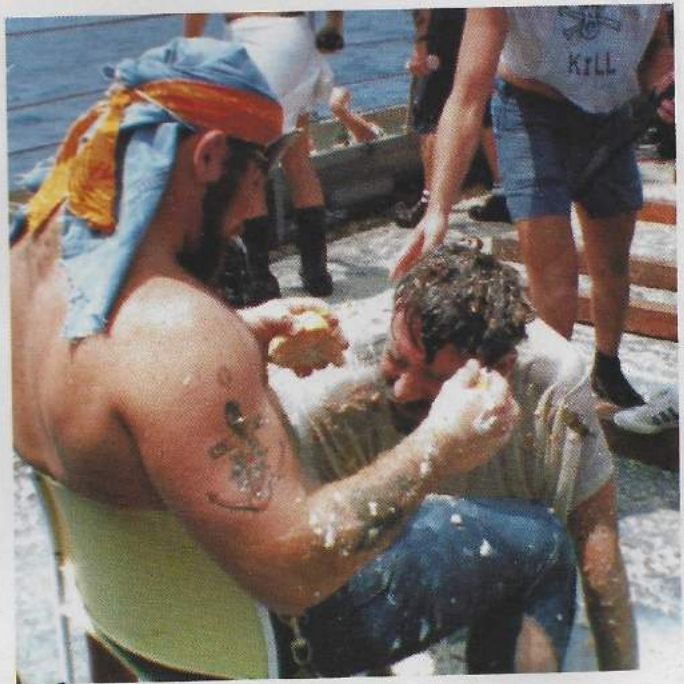
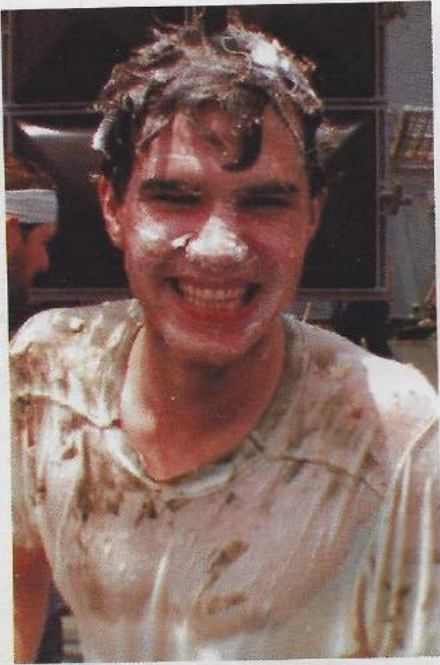
Crossing the Line Ceremony



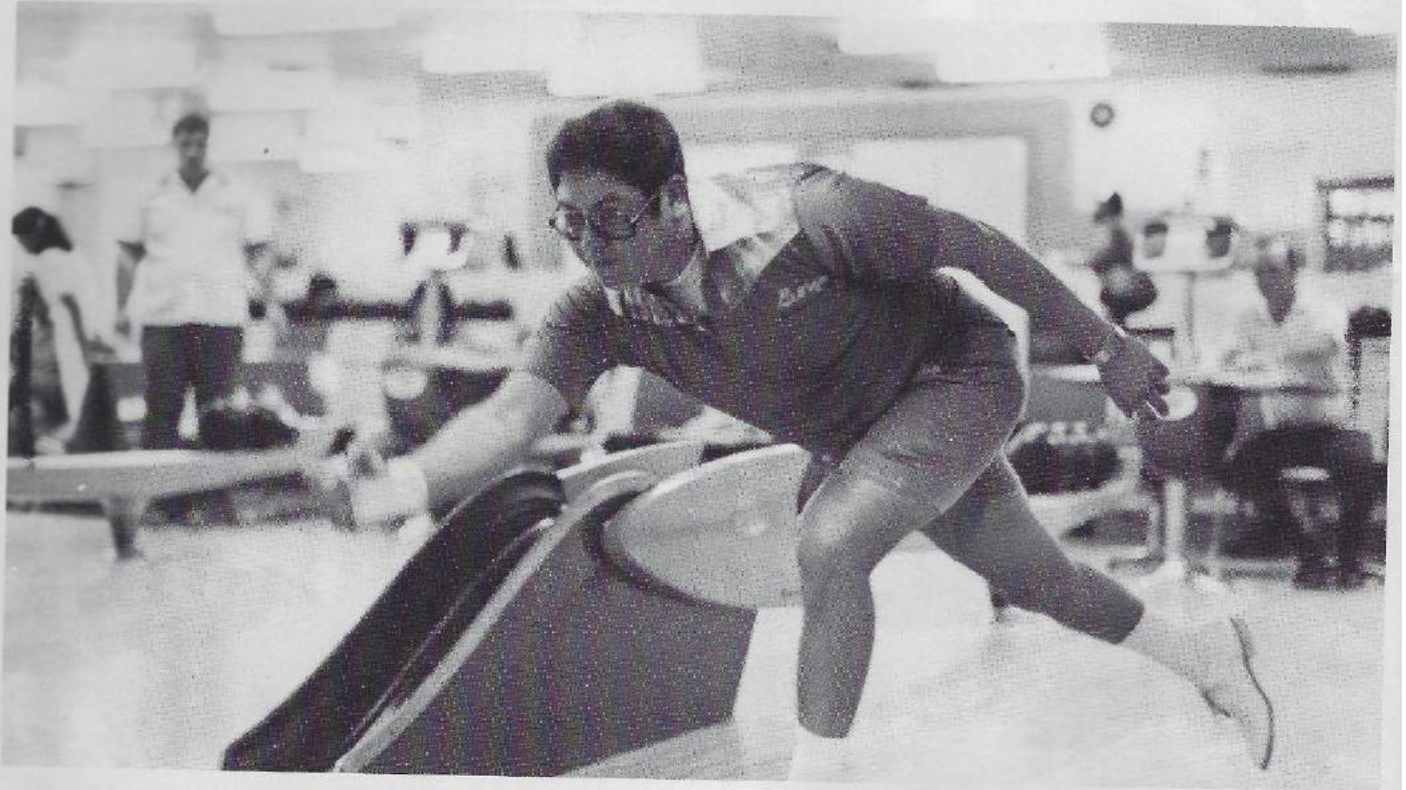


Crossing the Line Ceremony





Leftwich Athletics





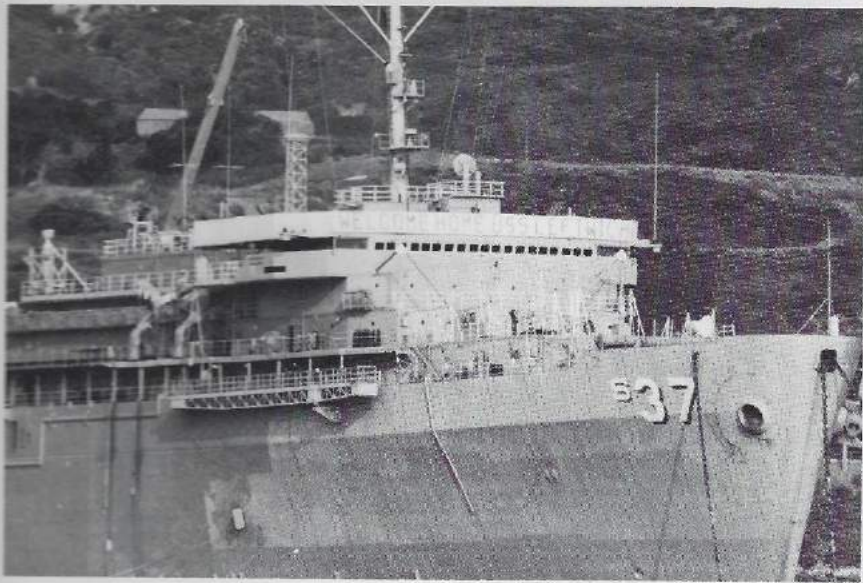
Home Run!!!



Yes, XO, we won AGAIN!!!

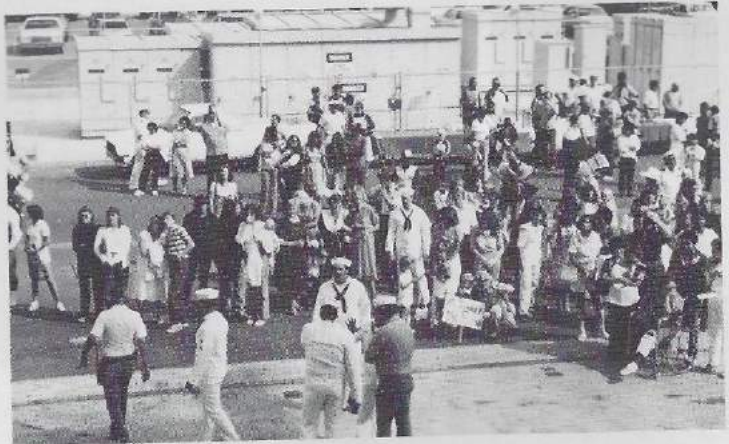
What, only 3 strikes!!!

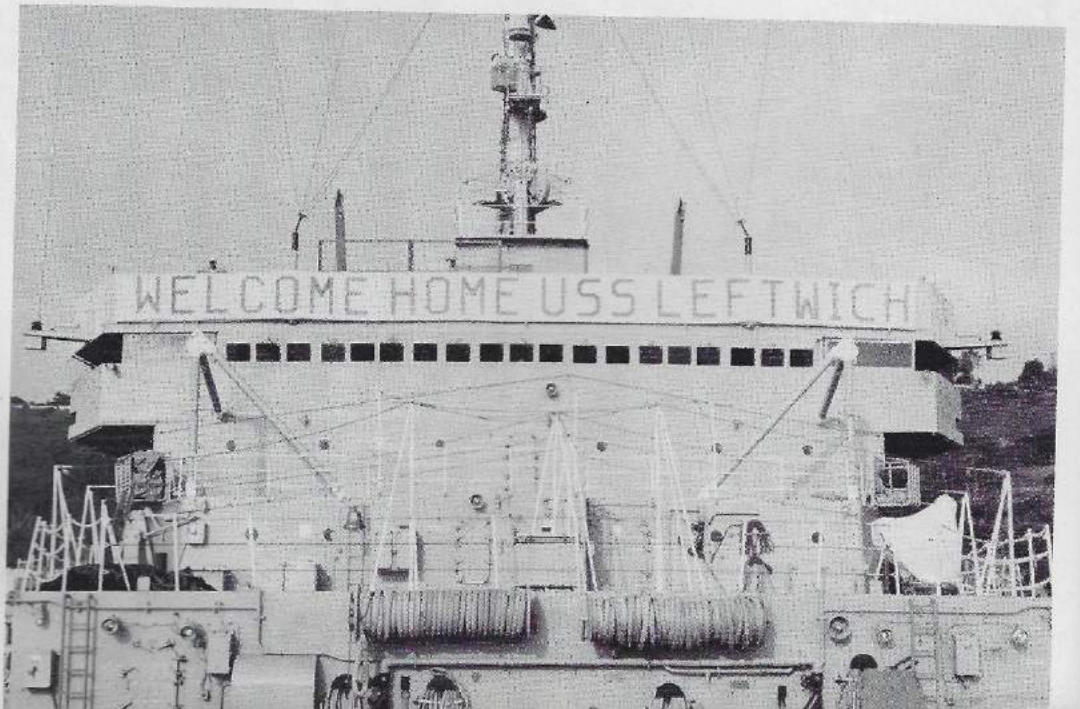
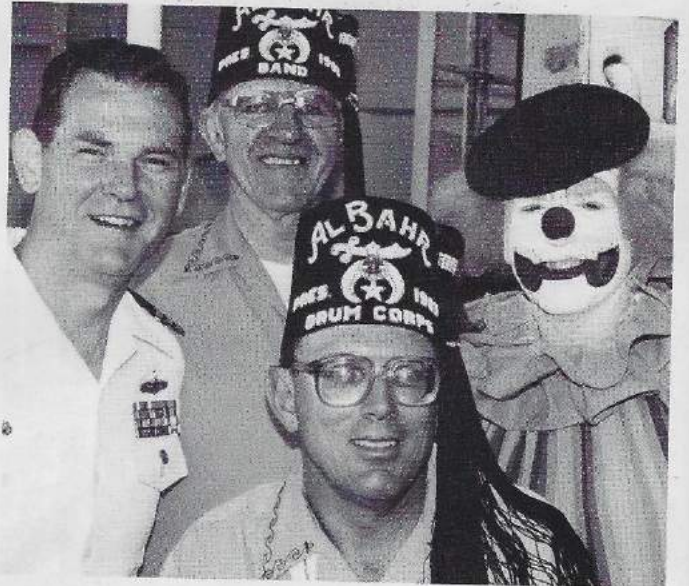
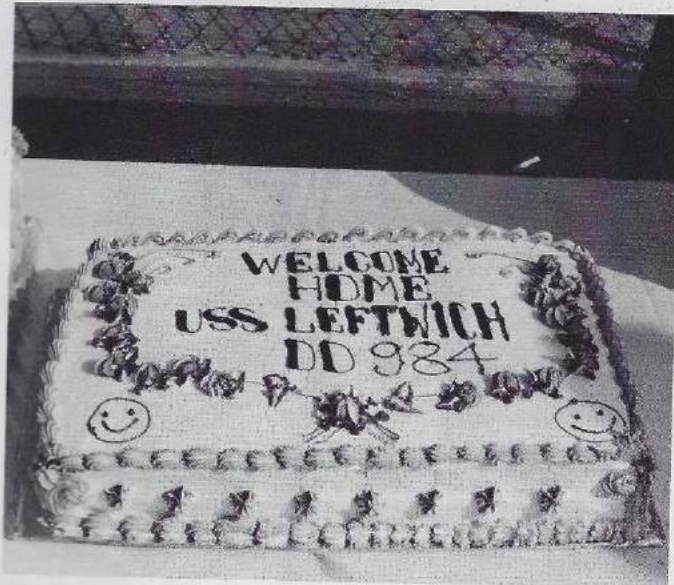




Homecoming San Diego









The Crew





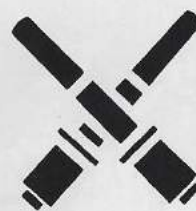
WestPac Snapshots



Sonar Technician
(ST)



Fire Control
Technician (FT)



Gunner's Mate
(GM)



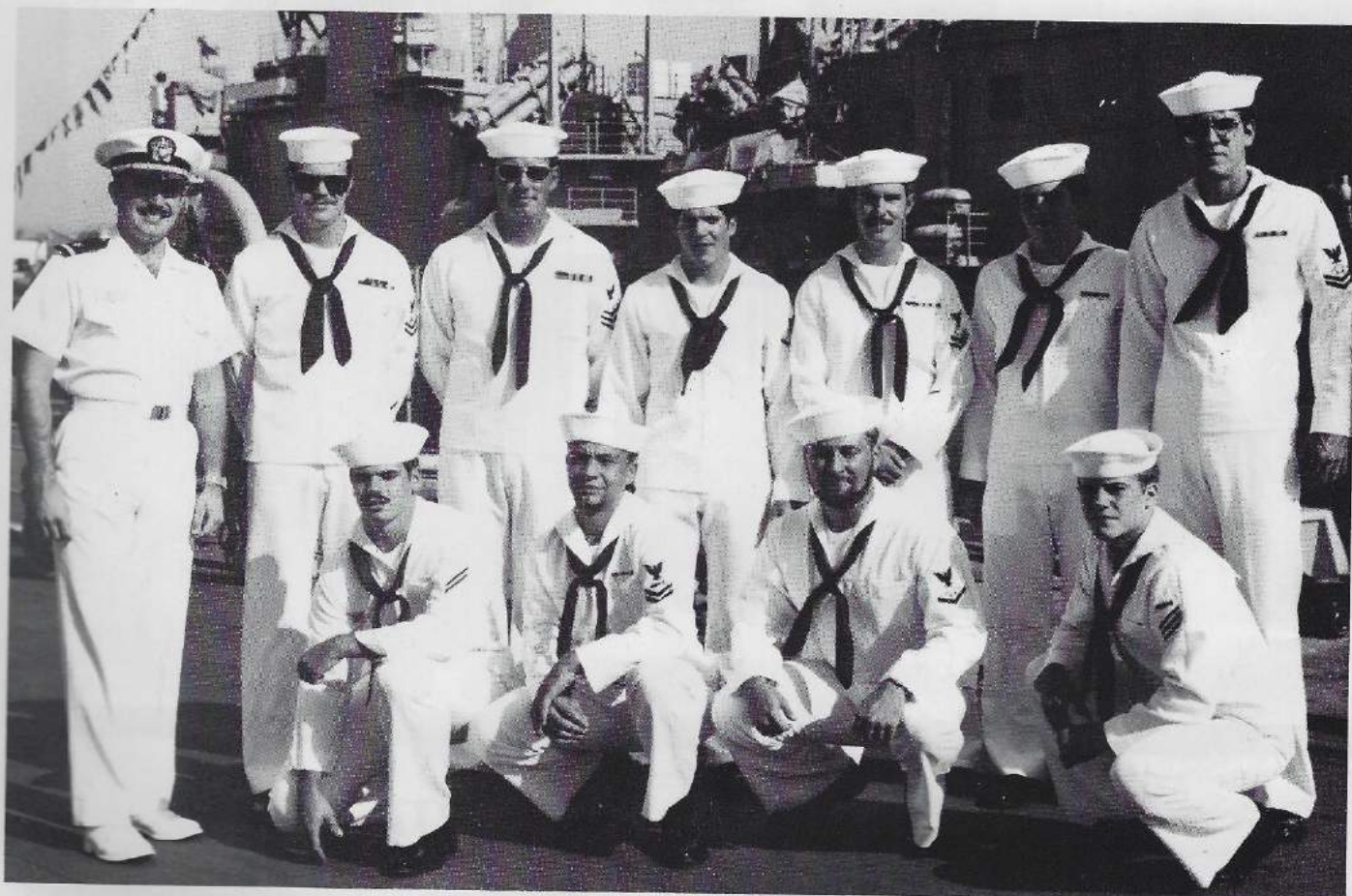
Torpedoman's
Mate (TM)

Combat Systems

CA Division

Personnel

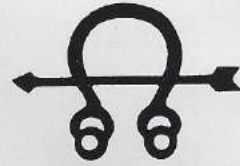
ENS FAIRBANKS, STGCS MARTIN, STG1 VANOOSBREE, STG1 DAVIS, STG1 MIX, STG2 MACDONALD, STG2 HYDE, STG2 SULLIVAN, STG3 ANTONELLIS, STG3 FARRELL, STG3 HURLEY, STG3 HOLLOWAY, STG3 LANE, STG3 WALTZ, STG3 WALTERS, STGSN ASQUITH, STGSN FREY, STGSN FUCCI, STGSN WEBER, GMT2 BLANTON, GMT2 PIPES, GMT3 GILBERT, GMT3 BERENT, TM3 DAWSON, TMSN LYERLA, TMSN WILCOX



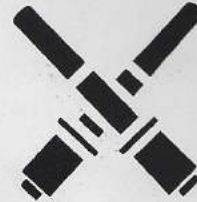
Standing left to right ENS Fairbanks, STG2 Blanton, MacDonald, STG3 Hurley. Kneeling STGSN Fucci, TM2 Wilfong, STG3 Walters, TMSN Lyerla



LTJG Fairbanks



Sonar Technician
(ST)



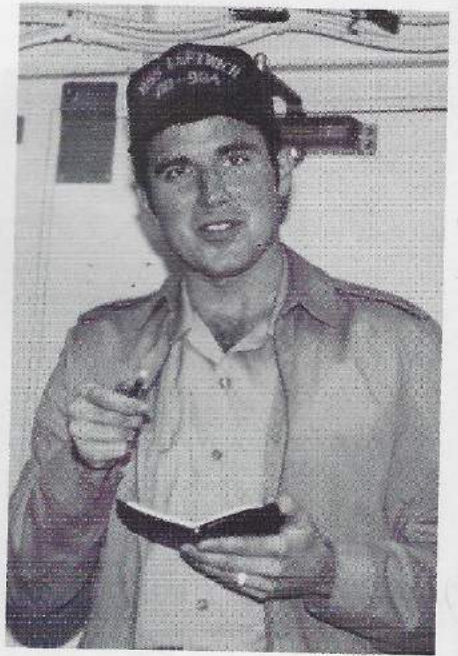
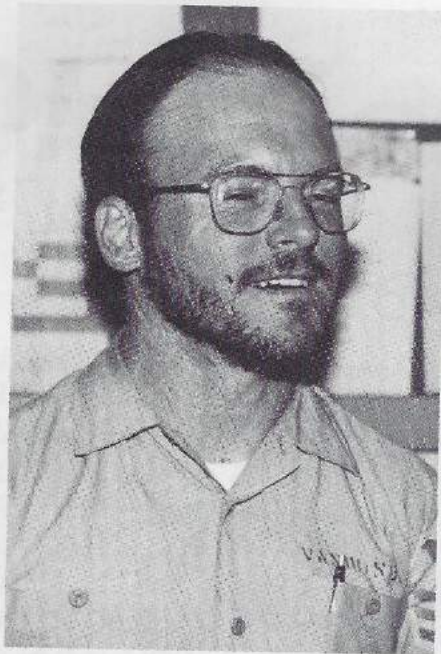
Gunner's Mate
(GM)

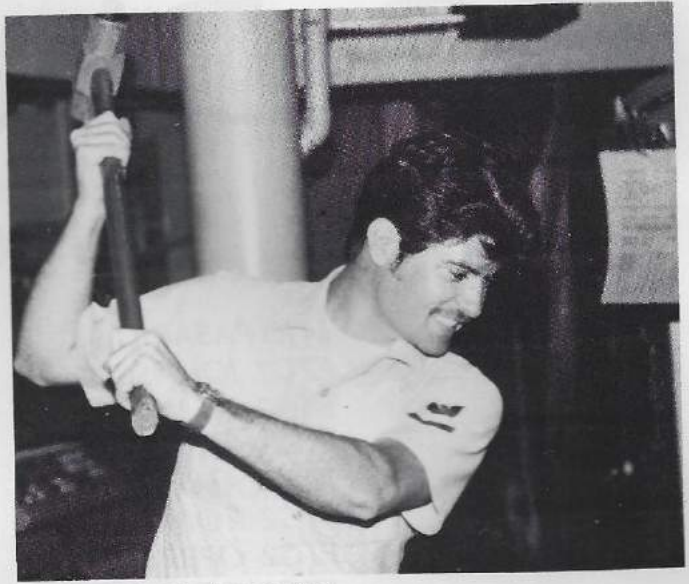
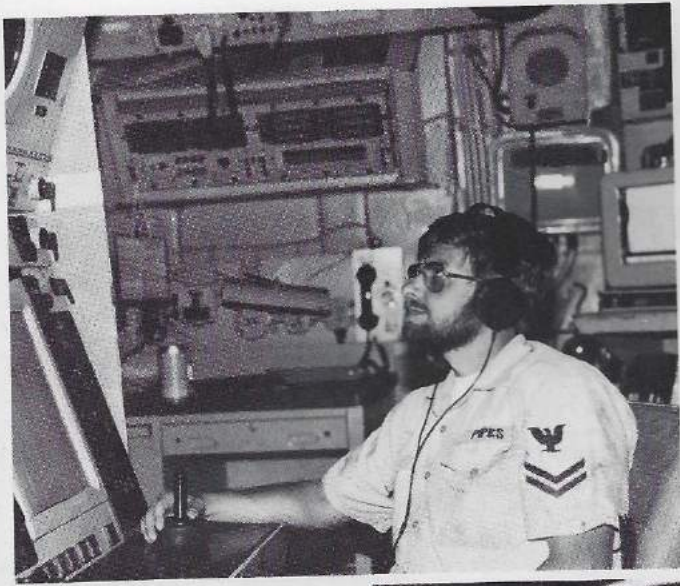


Torpedoman's
Mate (TM)



L/R CMT3 Pipes, GMT3 Killian, STG3 Waltz, STG3 Weber, STG2 Hyde, STG2 MacDonald, STG2 Hol- loway, STG3 Asquith, STG2 Dahlstrand, STG2 Hurley, ENS Fairbanks





CG *Division*

Personnel

LTJG PASARILLA
FTG1 JOHNSON
FTG1 WENGER
FTG1 ZIEBA
FTG2 ALLEN
FTG2 ROBINSON
FTG2 OPBROEK
FTG3 GOMES
FTG3 GEISLER
FTGSN MEYER
FTGSN HUX

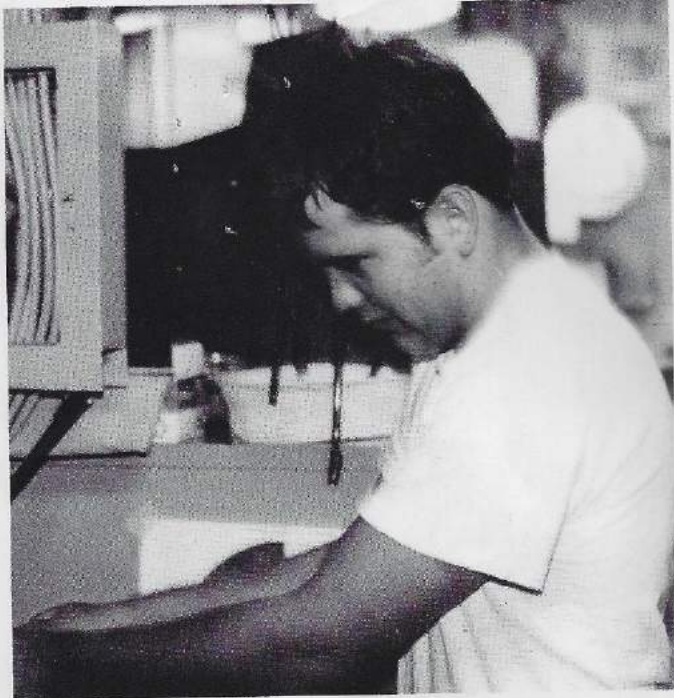
GMGC SNIDER
GMGC JONES
GMG1 BURPO
GMG2 MERICLE
GMG2 ROBINSON
GMG2 CHRISTY
GMG3 CARDONA
GMG3 MILLER
GMG3 SYNHORST
GMGSN YEATON
GMGSN HOWIE



BACK ROW: LTJG Pasarilla, FTG1 Wenger, FTGSN Hux, FTG2 Allen, GMGSN Synhorst. FRONT ROW: FTG1 Zieba, GMG3 Christy, FTG3 Gomes, GMGSN Yeaton



*Division Officer
LTJG Pasarilla,*



FTGSN Meyer hard at work



**Gunner's Mate
(GM)**



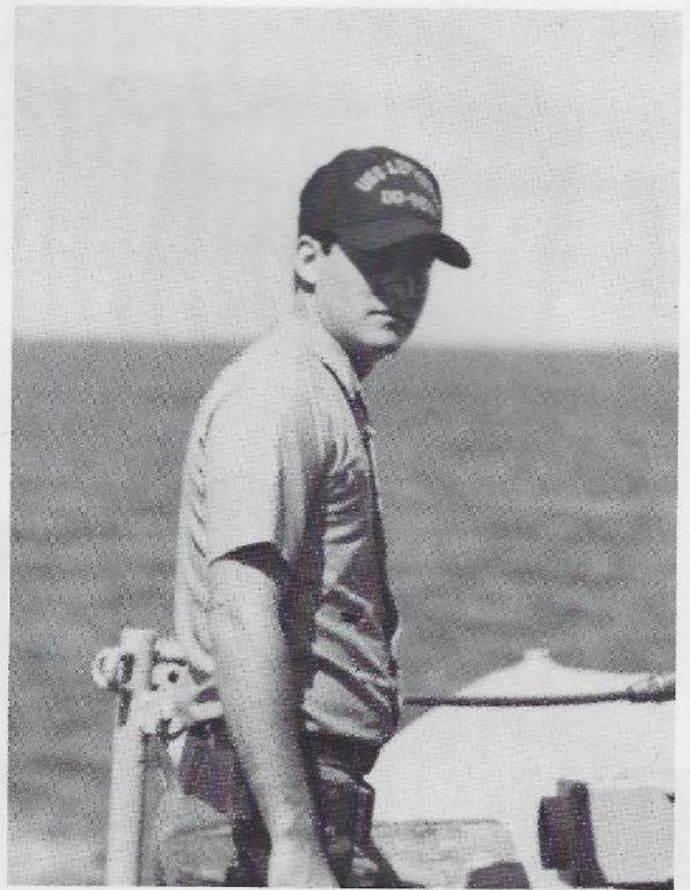
**Fire Control
Technician (FT)**



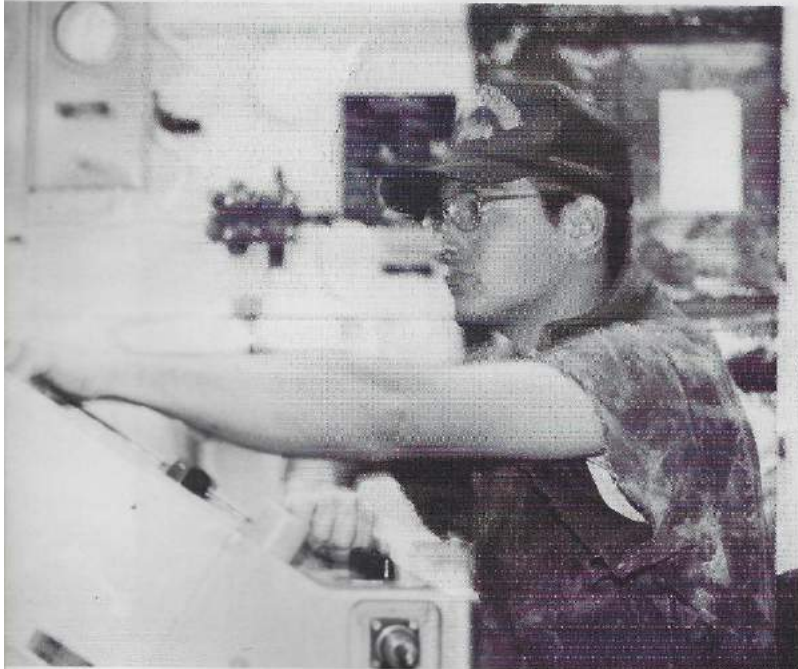
FTG1 Zieba



GMG3 Synhorst



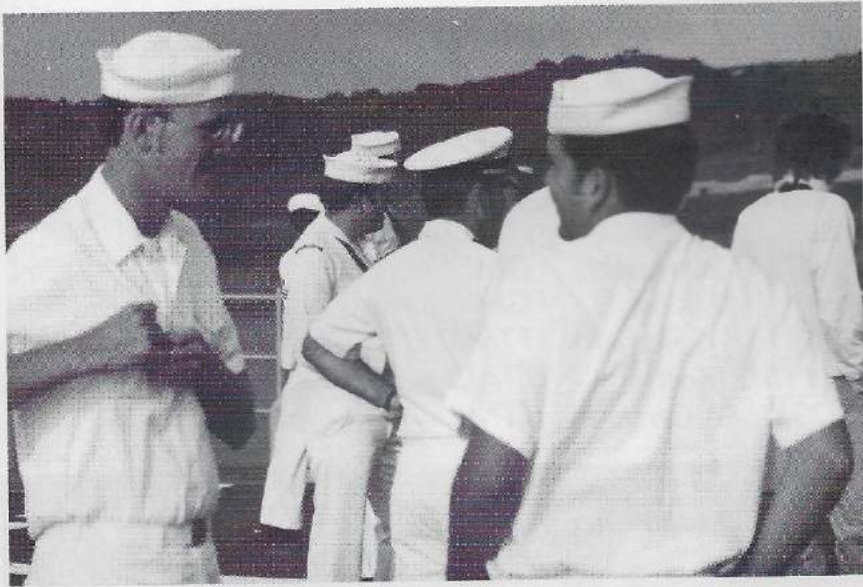
GMG3 Miller



FTG2 Opbroek



GMGSN Yeaton

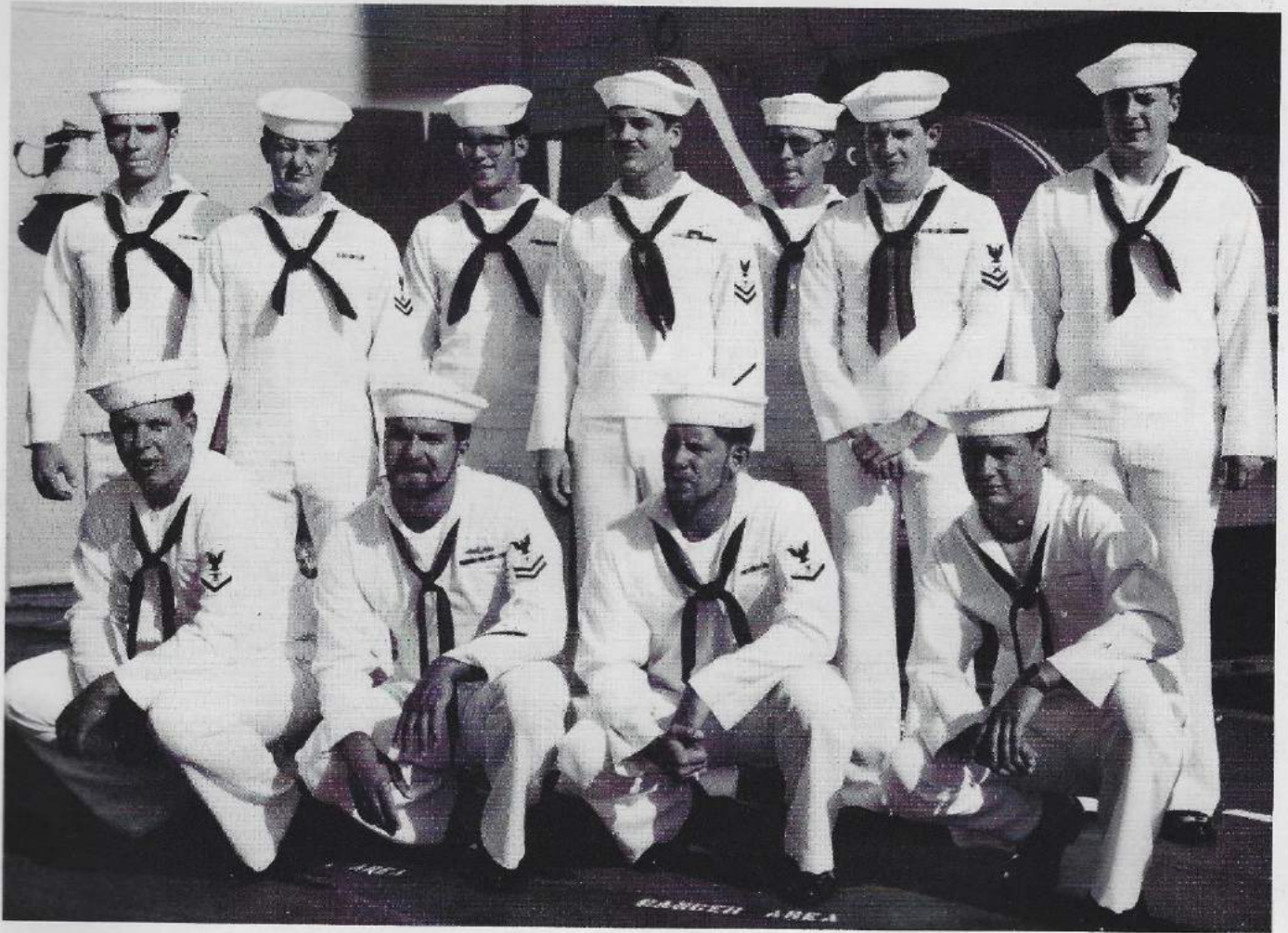


CM Division Personnel

LTJG Arpin
FTMC Dewell
FTM1 Hanner
FTM2 Grant
FTM2 McAlpin

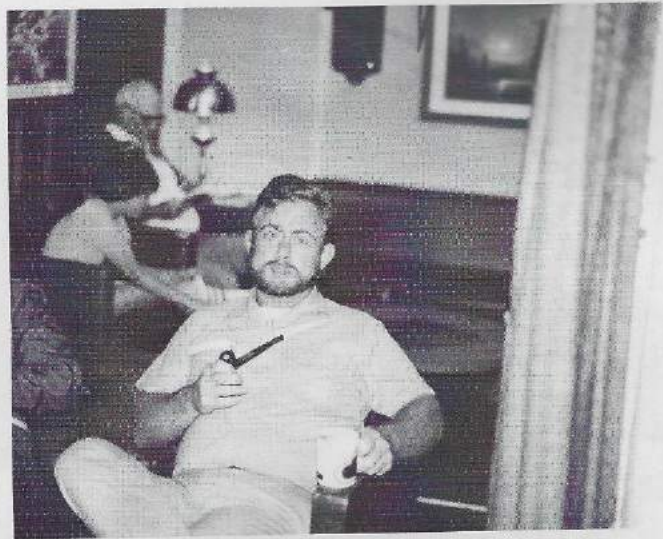
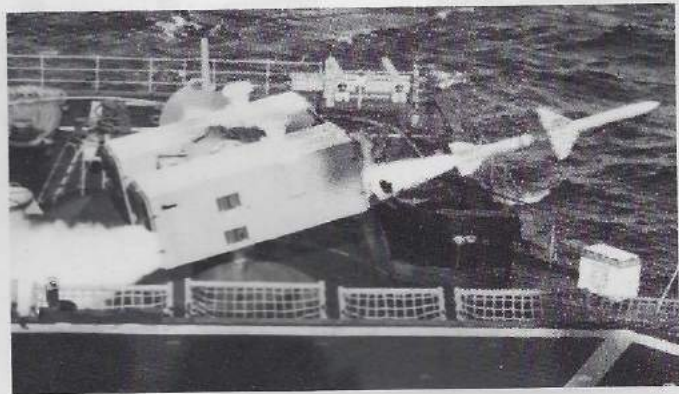
FTM2 Karboski
GMM2 Kost
FTM2 Coleman
FTM2 Bothe
GMM2 Carter

GMM3 Benson
GMM3 Pressley
FTM3 Carter
FTMSA Bishop
FTMSA Wigginton



Left to Right standing, FTMSN Harlos, GMM2 Carter, GMM3 Pressley, FTM2 McAlpin, FTM1 Hanner, GMM2 Kost, FTMSA Wigginton. Kneeling:

FTM2 Coleman, FTM2 Grant, FTM2 Bothe, FTMSA Bishop.



LTjg Arpin FTMC Dewell



Standing left to right. FTM2 Coleman, FTM2 Bothe, FTM2 Grant, FTM2 McAlpin, FTMSN, Harlos, FTM3 Carter, FTM2 Karboski, GMM2 Carter. Kneeling: GMM3 Benson, GMM2 Kost, GMM3 Pressley, LTjg Arpin.

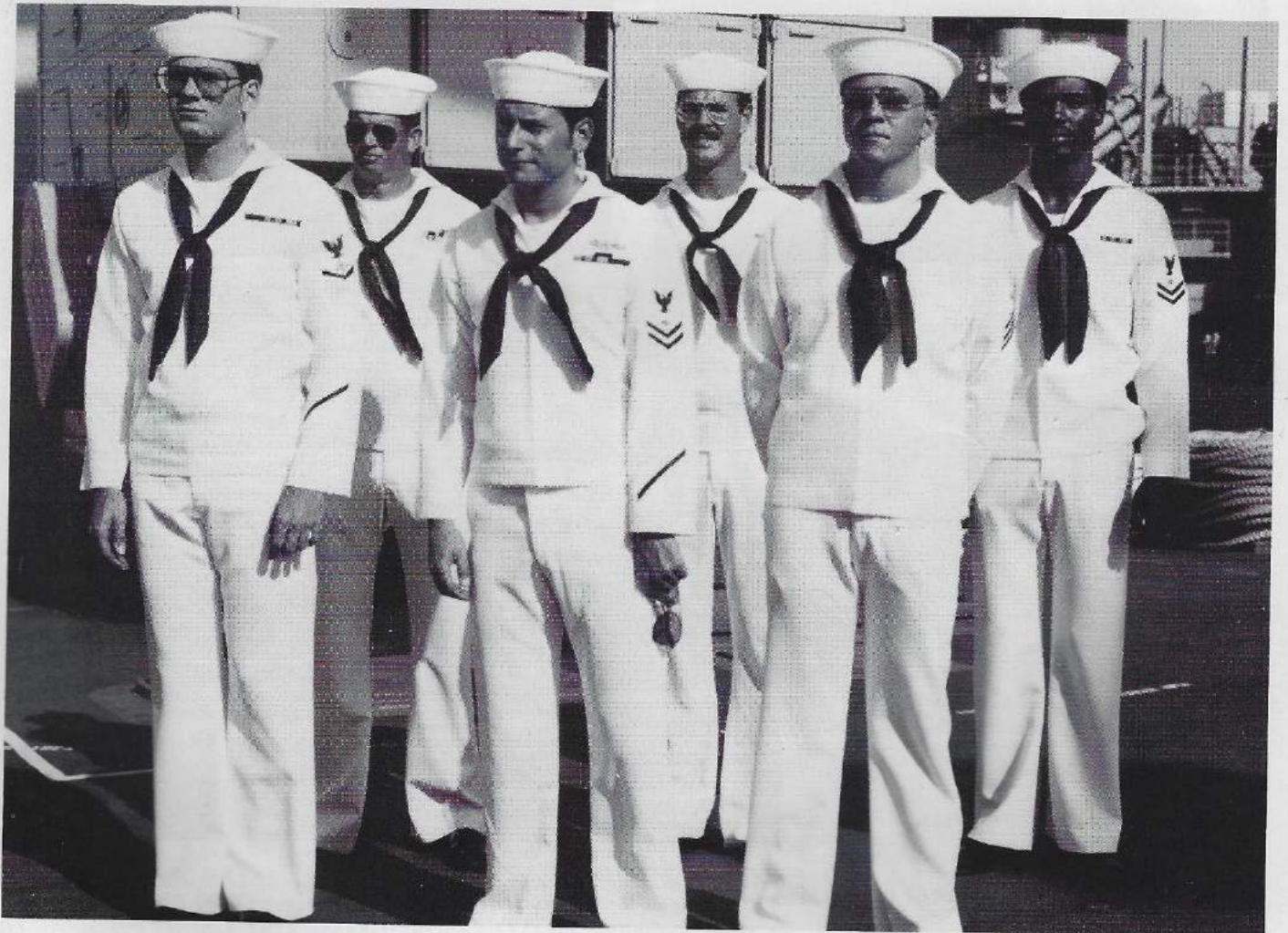
FTM1 Hanner

CE Division

Personnel

*LTJG BOOTH
DSC GUSTAFSON
ETC NADDY
ET1 PINEDA
DS1 BERRY
ET2 JERRARD
DS2 STEELE
ET2 FRISBEE
DS2 VGA
ET2 SMITH*

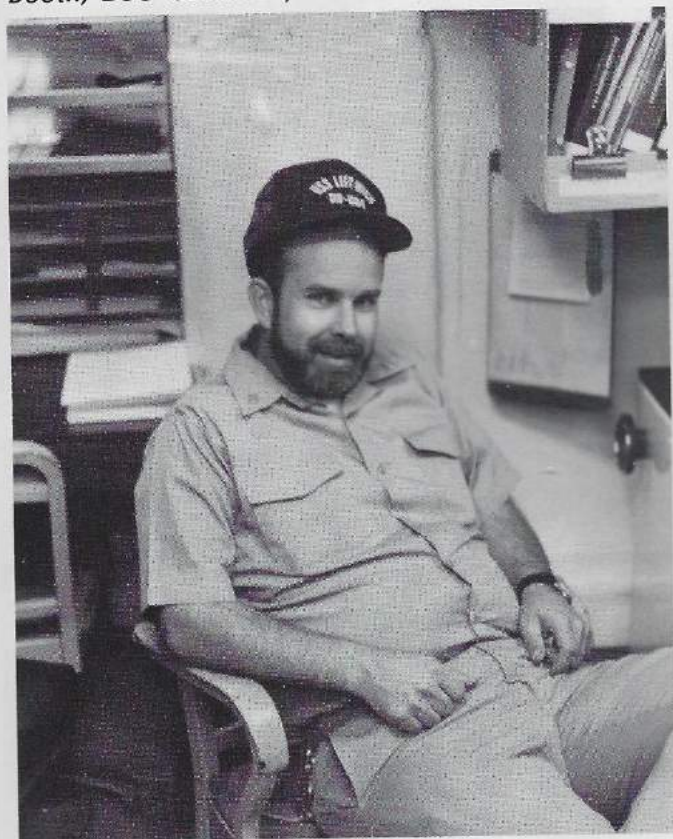
*ET2 RINGER
ET2 HOPKINS
DS3 LOSSASO
ET3 SMITH
ET3 SWALLOW
ET3 MITCHELL
DSSN HASENOHRL
DSSN MARCHBANKS
DSSN LECROY
DSSN DOWNING*



DS3 Lossaso, ET3 Mitchell, DS1 Berry, DS2 Emig, DSSN Lecroy, ET2 Smith



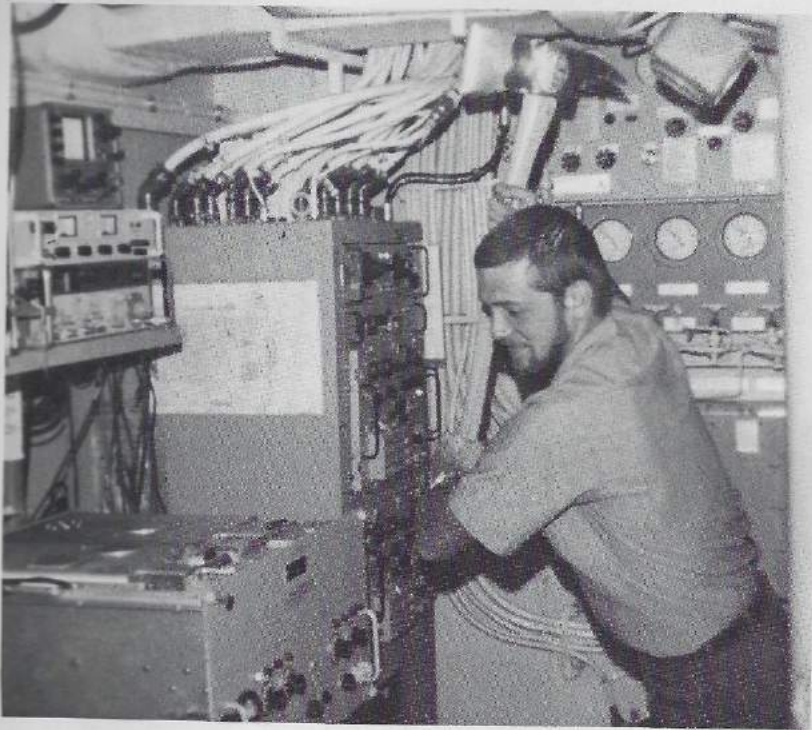
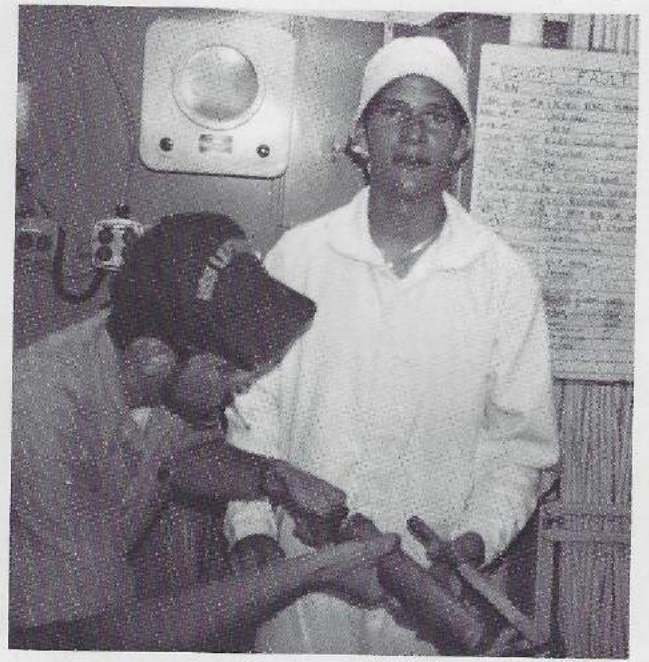
ET1 Pineda, ETC Naddy, DS2 Veiga, ET3 Mitchell, DS1 Berry, ET2 Jerrard, DS3 Lossaso, ET3 Smith, LTjg Booth, DSC Gustafson, B/R DSSN Marchbanks, DS2 Steele, ET2 Bartlett



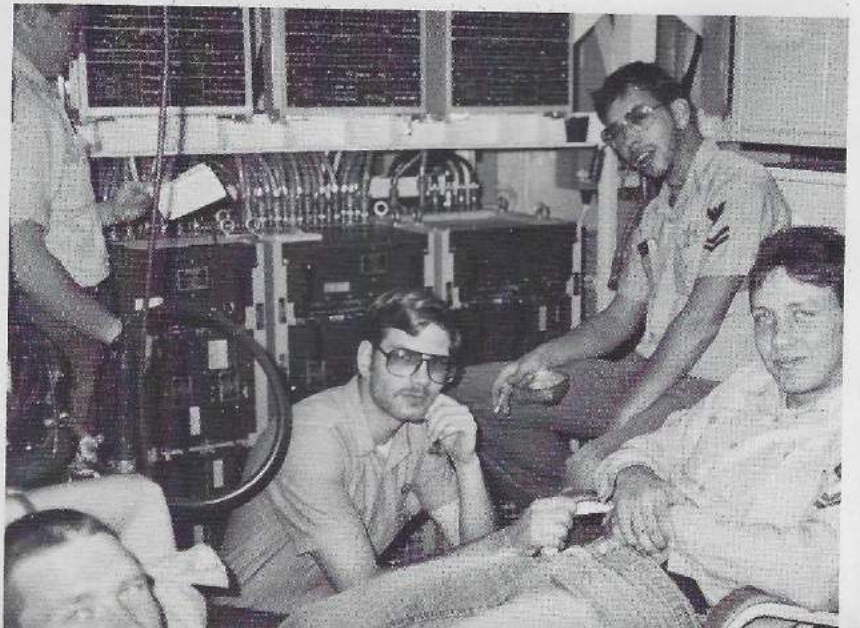
What am I grinning about?



Hi, I'm Gus!



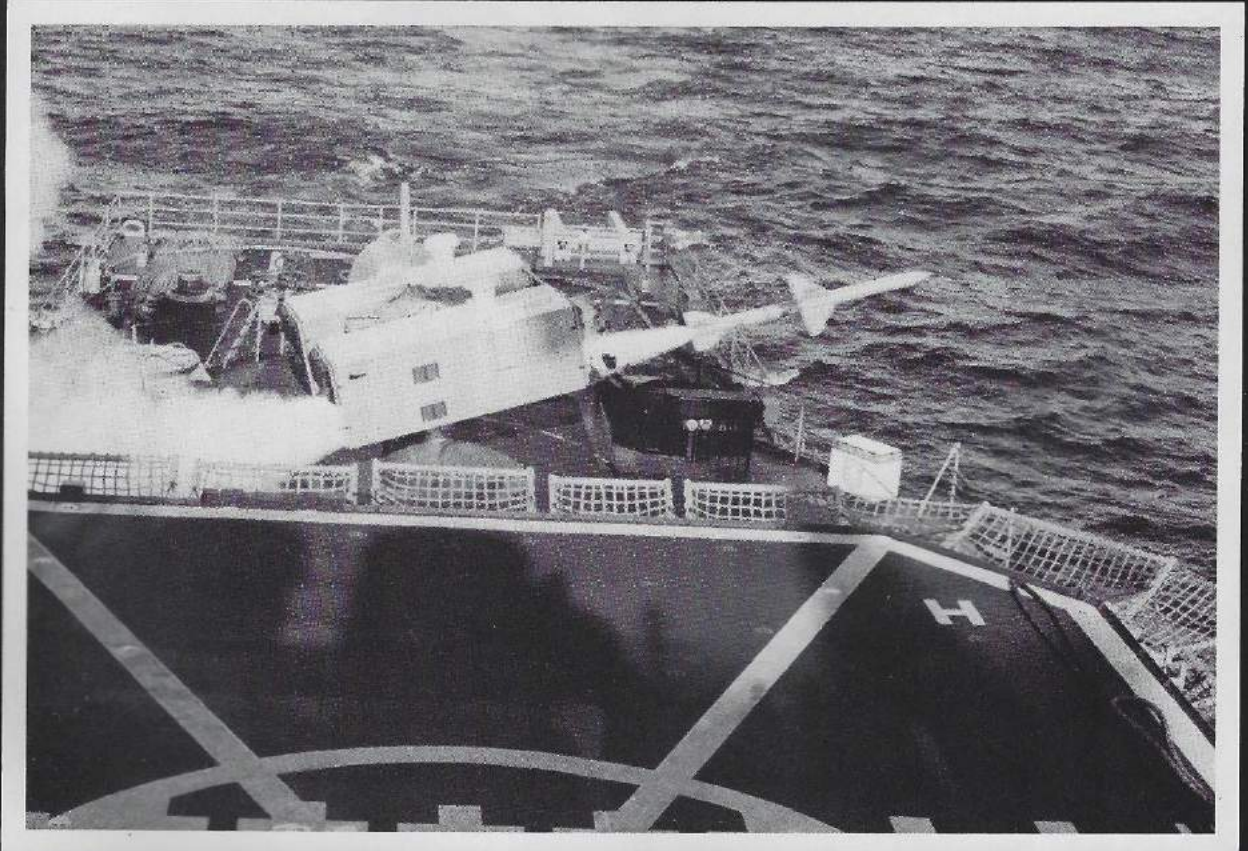
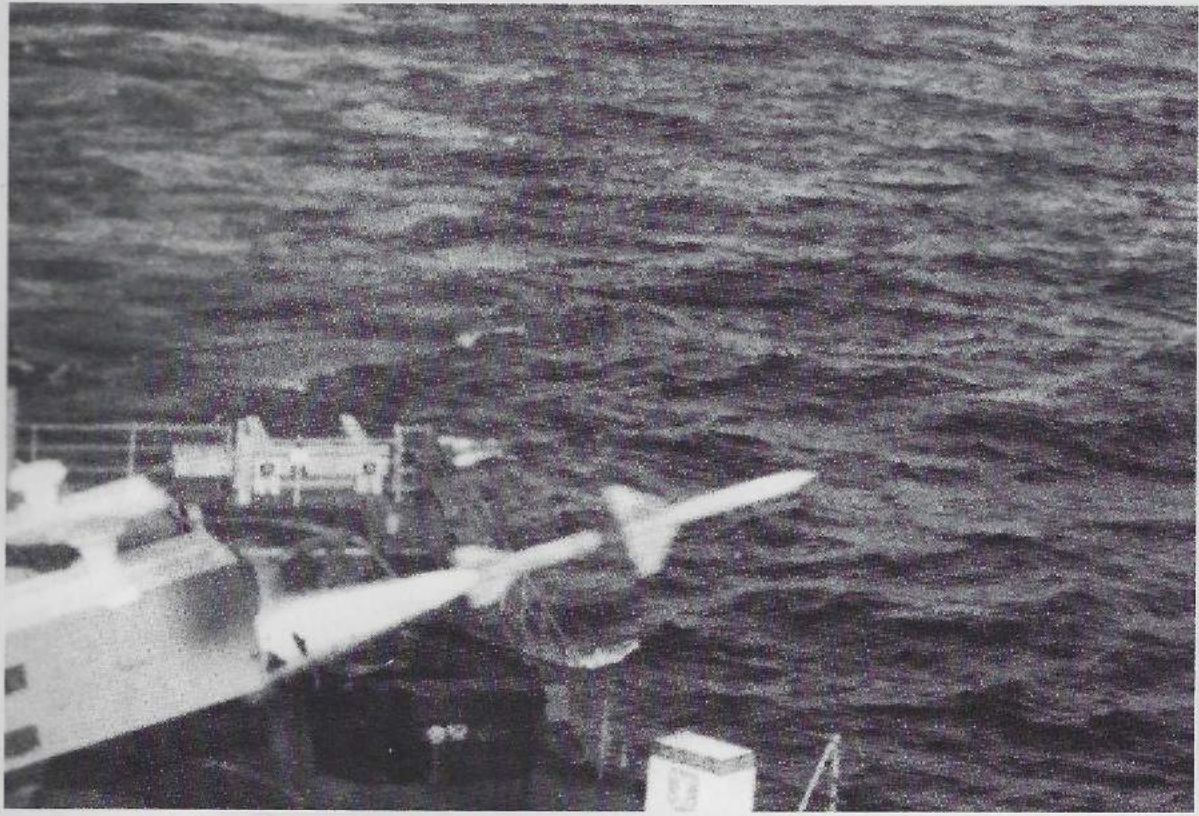
At Work ...





... At Play







Engineman (EN)



Gas Turbine
System
Technician (GS)



Interior
Communications
Electrician (IC)



Hull Maintenance
Technician (HT)



Electrician's
Mate (EM)

Engineering

A Division

Personnel

*ENS MATHÉ
EN1 LeJUENE
EN1 GUNGN
EN1 KEENER
EN2 REINHARDT*

*EN2 HEATH
EN2 WIEDNER
EN2 LEHOE
EN2 LAMBERT
EN3 CLARK*

*EN3 ANDERSON
EN3 ELLIOTT
EN3 WIGAL
ENFN SARLES
ENFN PATTON*



ENS Mathé, EN1 Lejuene, ENFN Lionberg, EN1 Heath, EN3 Clark, EN2 Reinhardt, EN3 Elliott.



ENS Mathe



Engineman (EN)



EN3 Wigal, EN3 Anderson, EN3 Clark, ENFN Patton, ENFN Sarles, EN1 Lejuene, EN2 Lehoe, EN1 Keener.

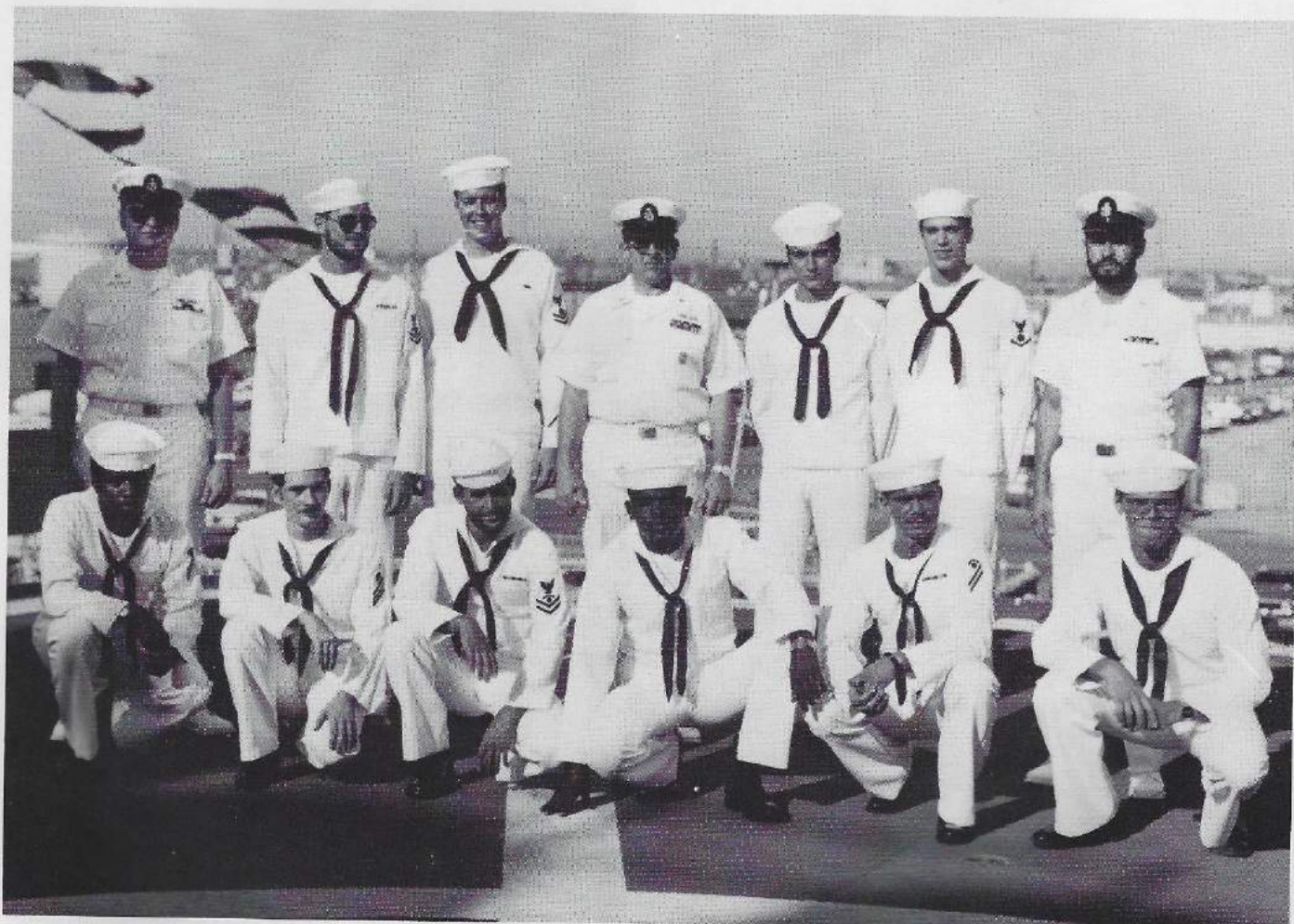
E Division

Personnel

ENS COPEMAN
EMCS KIRKHUFF
ICC JENKINS
EMC HEMPEL
EM2 STRATTON
EM3 HICAZI

EM3 BROWN
EM3 WALKER
FN ROSSI
FN MITCHELL
FA SHAKO
EMFR HENSLEY

FA SWOAP
IC2 SCHREIMAN
1C2 CHISHOLM
IC3 HERRICK
ICFN CLAY
FA CARDINAS



Standing ICC Jenkins, IC2 Schreiman, EM2 Stratton, EMC5 Kirkhuff, FN Rossi, EM3 Walker, EMC Rodriguez. Kneeling ICFN Clay,

EMFN Hensley, IC2 Chisholm, FA Shako, ICFN Herrick, FA Fink.



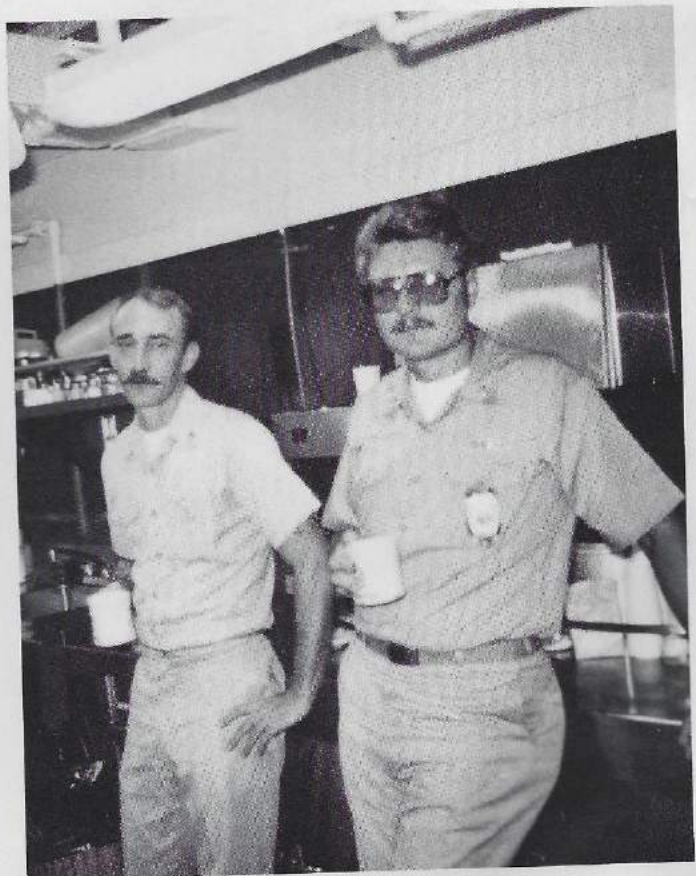
ENS Copeman



Electrician's
Mate (EM)



Interior
Communications
Electrician (IC)



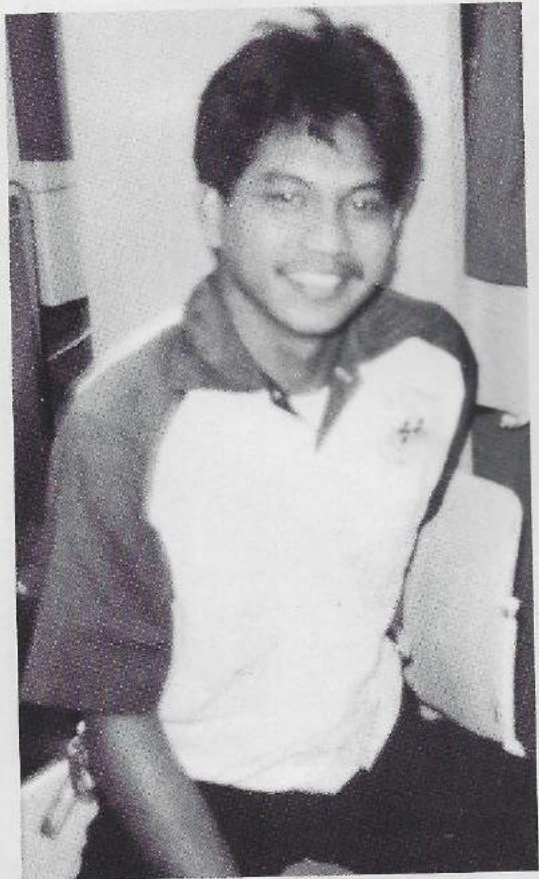
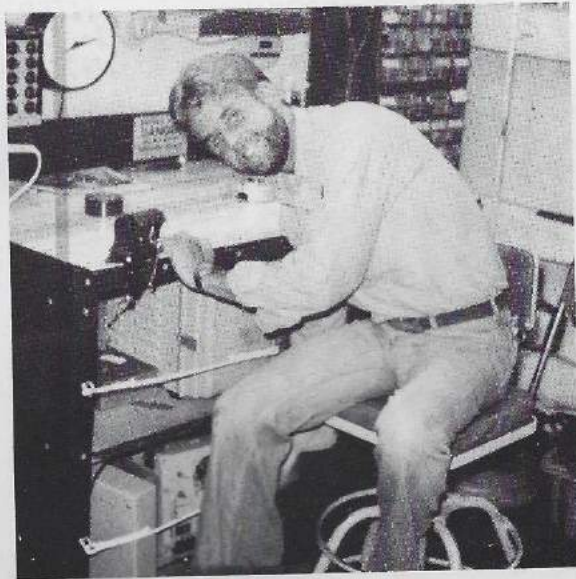
EMC Hempel, ICC Jenkins

IC Shop



EM Shop





R Division

Personnel

ENS Richter
HT1 Williams
HT3 Robung
HT3 Butler
HTFN Wright
MRFR Roberts
HTC Wilkin
HT1 McKinney
HT3 Horton

MR3 Sturtz
HTFN Williams
HT3 Henderson
HT1 Anderson
HT2 Sawtelle
HT3 Sherrill
HTFN Connett
HTFR Garelle



Kneeling L to R HTFR Garelle, MRFR Roberts, HT3 Sherrill, HTFN Connett, HT2 Sawtelle, HT3 Butler,

Standing HT1 Anderson, HT3 Horton, MR3 Sturtz, HTFN Wright, HT2 Robling, HT1 Williams.

PICS SWITCHED

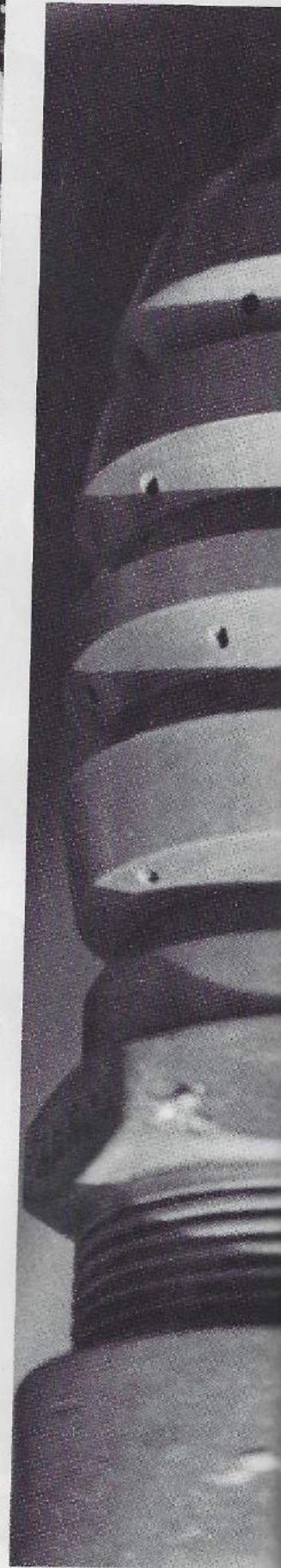
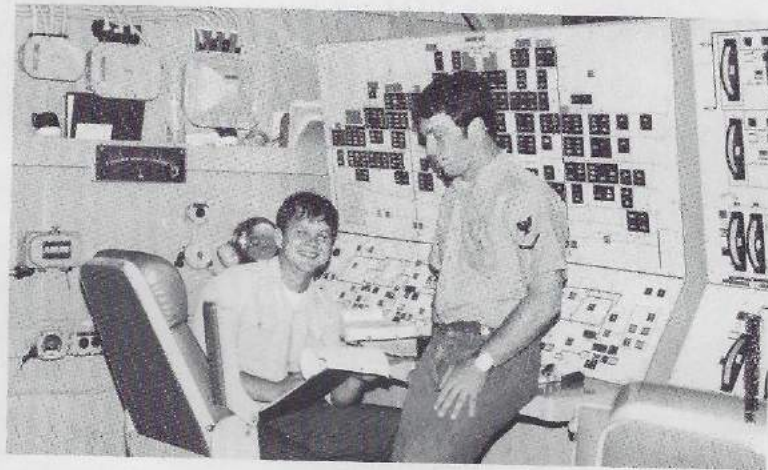


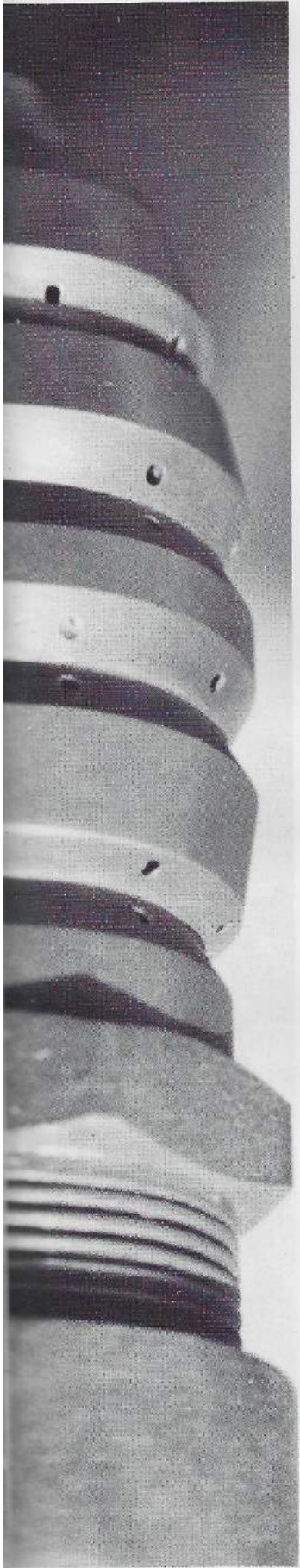
Hull Maintenance
Technician (HT)



Standing HT1 Anderson, HTFN Williams, HT3 Robling, HT3 Horton, HTFN Wright, HTC Wilkin. Front HT3 Connett, HT3 Henderson, HT3 Sherrill, HT1 McKinney.







MP Division

Personnel

GSM1 ED BAKER
GSM1 DAVID COKER
GSM1 BOB DAVIS
GSM1 DAVID KLOPHER
GSM1 RON STOUT
GSM2 ROY BANKSTON
GSE2 RICH BOLL
GSE2 RON CHARMASSON
GSE2 BOB JAMES
GSE2 MICHAEL NOEL
GSM2 GREG SCHULZ

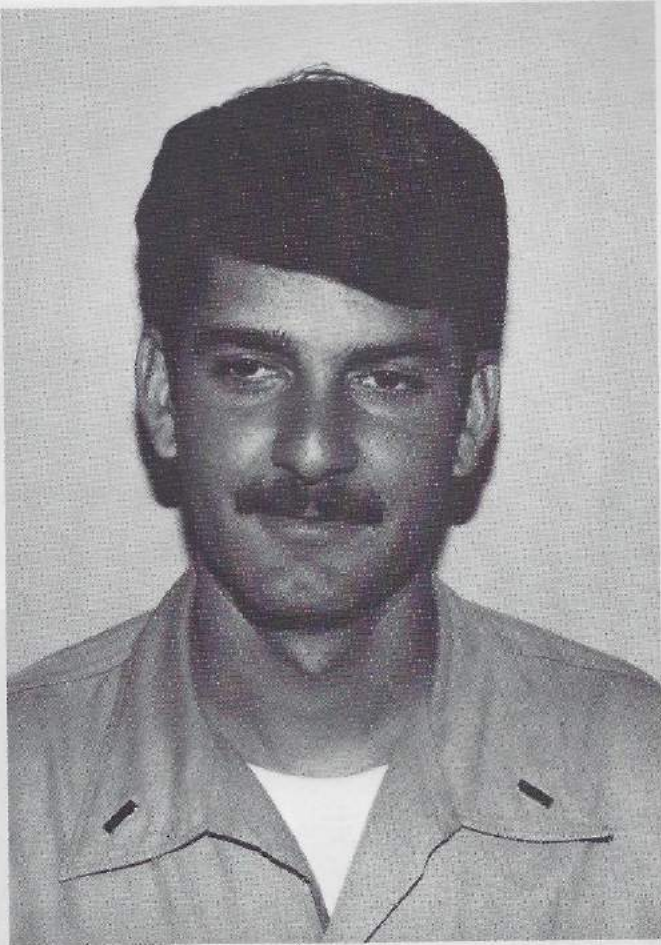
GSM2 KARL SCHULZ
GSM2 GENE VINLOVE
GSM2 BOB VRABEL
GSM3 DAVID ANDERSON
GSE3 RALPH BENNING
GSM3 DON BENNINGFIELD
GSM3 JIMMY HARMON
GSM3 CHRIS MOREY
GSM3 BOB PATE
GSM3 THOMAS RATTLE
GSM3 DAN SADLER

GSM3 KEVIN SMITH
GSM3 DAVID VASS
GSEFN MICK LESCH
GSMFN MIKE PIKEY
FN KEN BASS
FN DAVID DICKHART
FN DON LEE
FN JOHN NICKOLAS
FN MARK STANDIFORD





Gas Turbine
System
Technician (GS)



LTJG Talwar



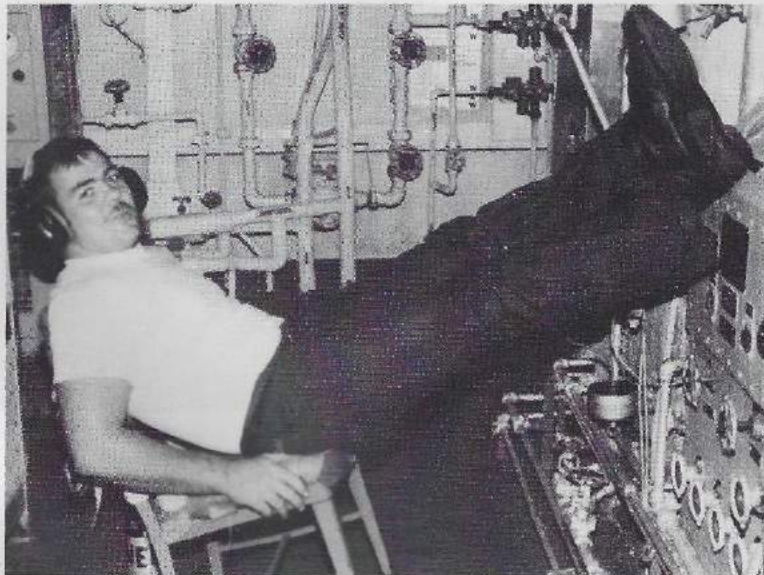
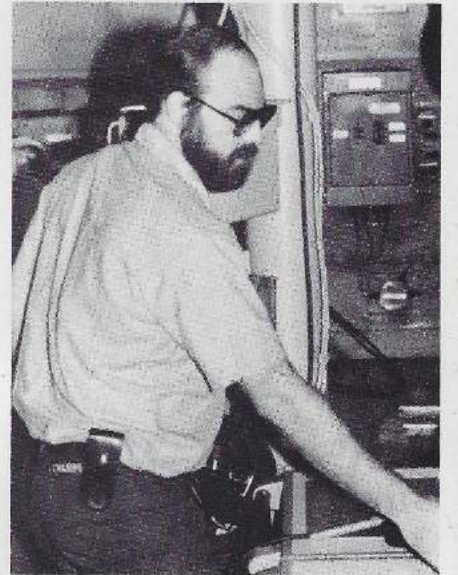
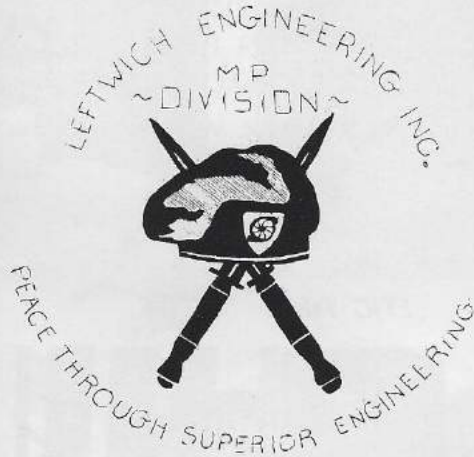
GSEC Cook



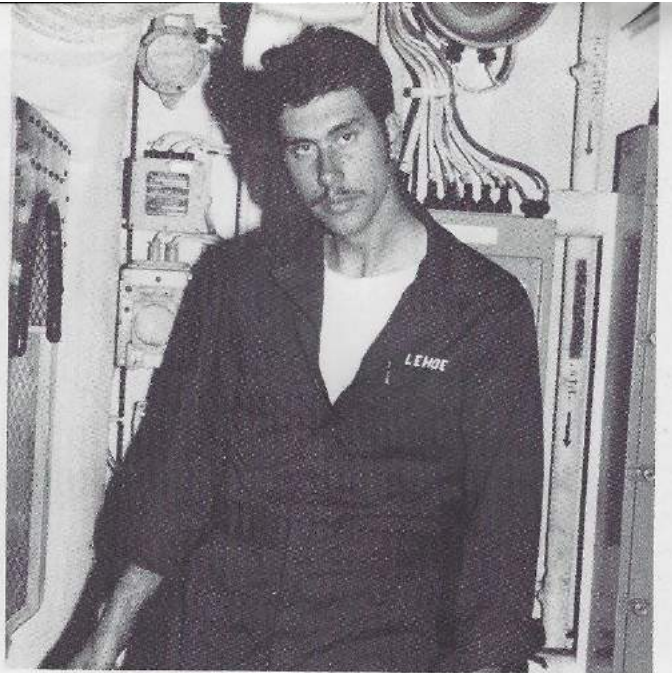
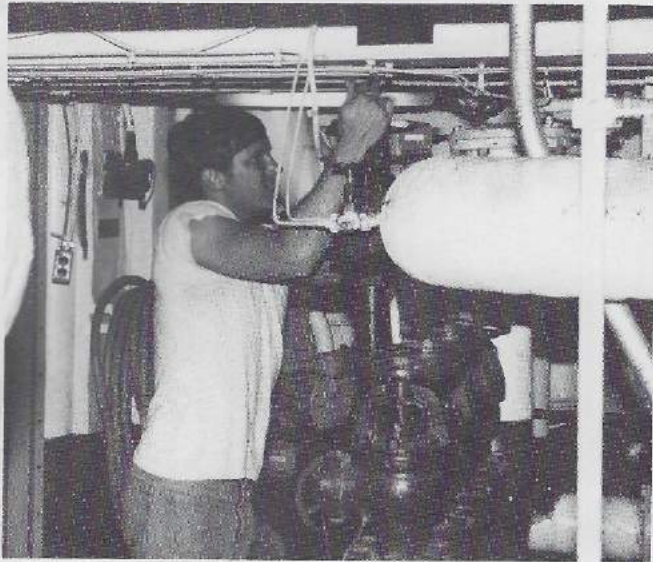
GSMC Wade



GSCS Henson





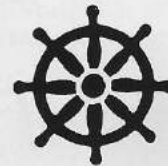




Master-at-Arms
(MA)



Hospital
Corpsman (HM)



Quartermaster
(QM)



Postal Clerk (PC)

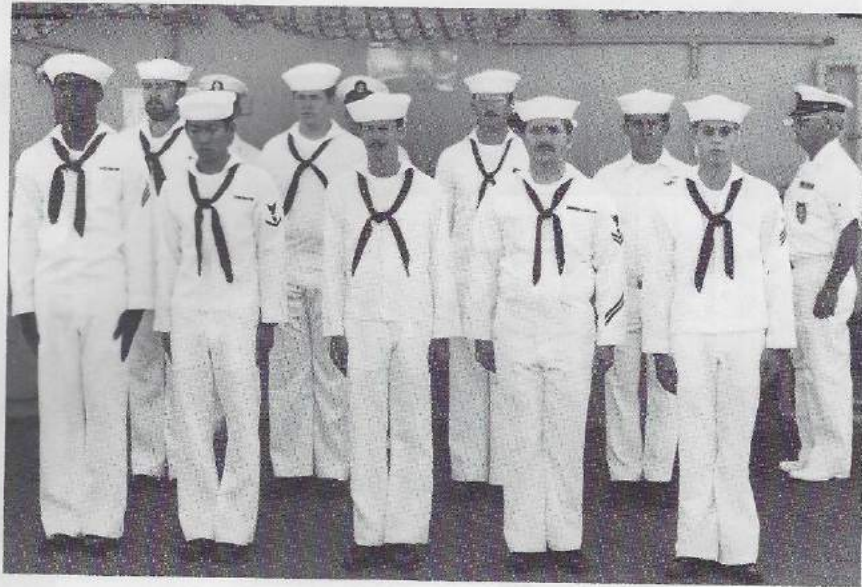


Yeoman (YN)



Personnelman
(PN)

Navigation



First Row: SN Cephas, PN3 Lau, PNSR MacMillan, QM2 Taylor, QMSN Woodruff Second Row PC3 Conrad, YNSN Davis, QM1 Kellogg, NC1 Engleman, BMC Lucy



Quartermaster
(QM)

Department

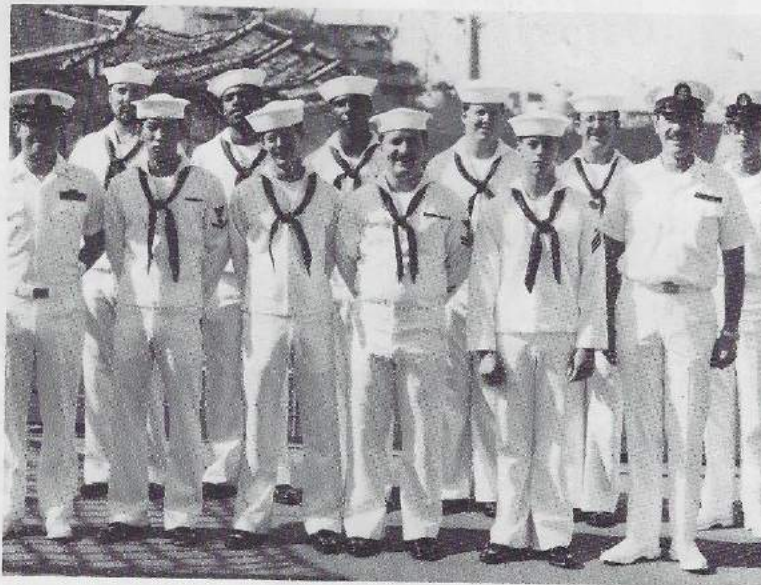
N
X



Personnelman
(PN)



Master-at-Arms
(MA)



Yeoman (YN)



Postal Clerk (PC)

First Row PNC Castro, PN3 Lay, PNSR MacMillan, QM2 Taylor, QMSN Woodruff, HMC Bogart Second Row PC3 Conrad, YNSN Jackson, SN Cephas, YNSN Davis, QM1 Kellogg, YNC Hayes

A
d
m
i

Navigation



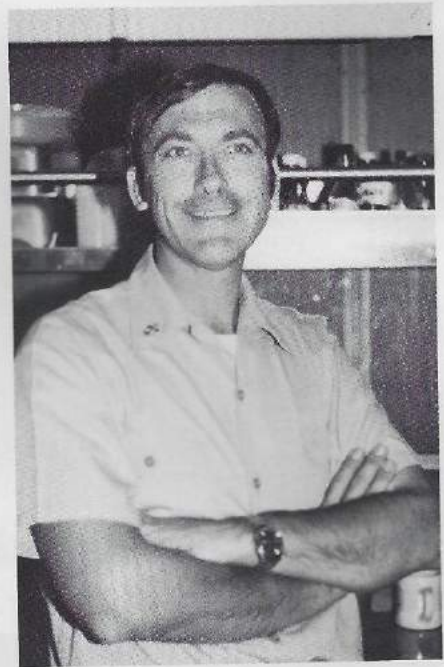
Hospital
Corpsman (HM)



PNC Castro



YNC Hayes



HMC Bogart



"Aren't Unreps Fun"



QM1 Kellogg



Ever Vigilant MA1 Centers



HM3 Gleason



"Who me? On weight control"



"Moored, shift colors"



PC3 Conrad



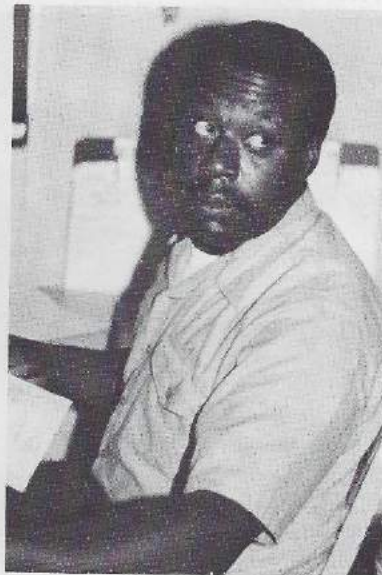
PN2 Lay



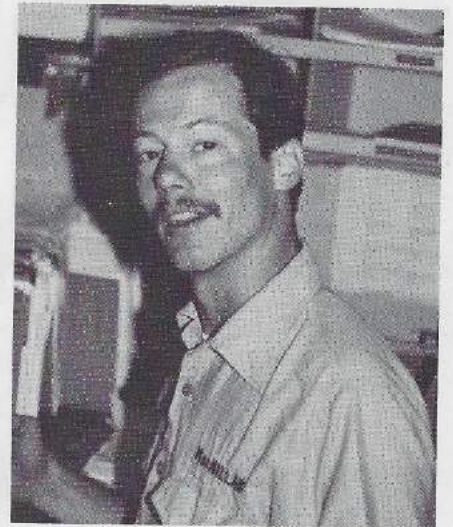
YN3 Diaz



YNSN Braden



SN Pichon



PNSR MacMillan



YN3 Jackson



SN Cephas



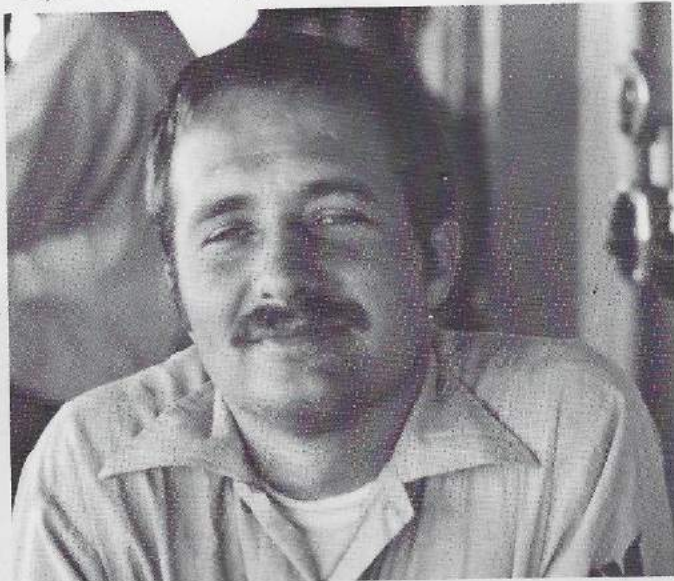
"Haze Grey, and Underway"



"Paperwork, what paperwork?"



QM3 Eastgate



QM2 Taylor



QM3 Whitting and Scruffy



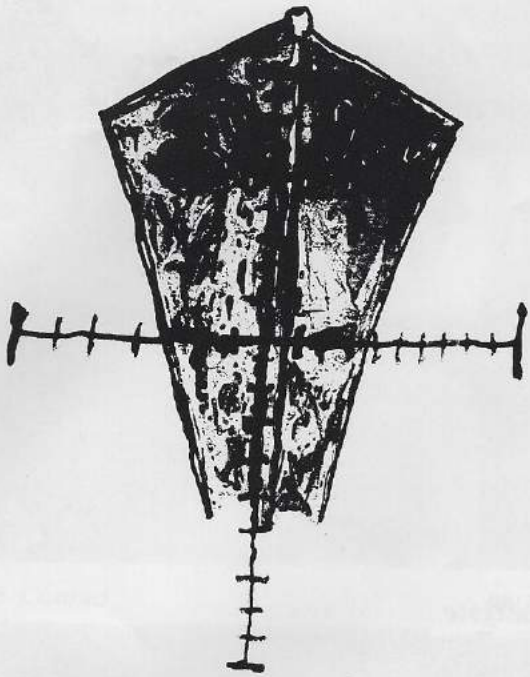
QMSN Woodruff



QM2 Ortega

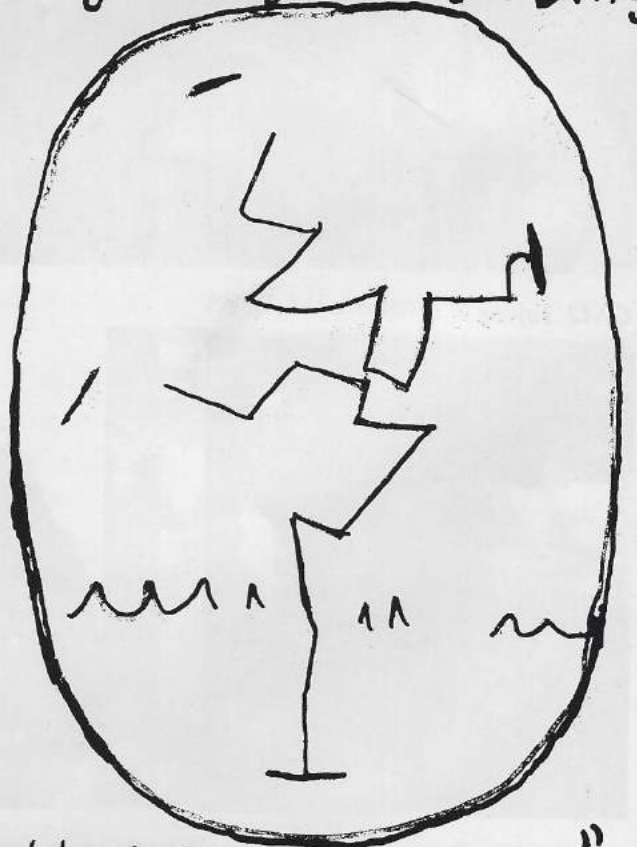


QMSA Allen

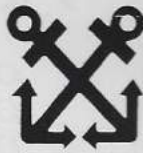


WHAMI!

"Ding - Ding, Ding - Ding"



"Lettwich,..... Crossing"



Boatswain's
Mate (BM)



Electronic
Warfare
Technician (EW)



Operations
Specialist (OS)

Operations

OI Division

Personnel



Operations
Specialist (OS)

OSC Ronald Petersen
OS1 Rick Anderson
OS1 Pete Baumgartner
EW1 Walter Rienemer
OS2 Tim Brookbank
OS2 Wyatt Chidester
OS2 Tim Davis
OS2 Bill Goedelman
OS2 Dan Lovegrove
OS2 Jerry McWilliams
OS2 Bill Parr

OS2 Kevin D. Pool
OS2 J. R. Richards
OS2 John Serna
EW2 Al Tansey
OS2 Dave Wiggins
EW3 John Caudill
OS3 Harry Simon
EW3 Lou Strowger
OS3 Brian Tremblay
OSSN Lloyd Beard
OSSN Jim Bridges

OSSN Michael P. Brophy
OSSN Kevin Buffard
OSSN Charles Cross
OSSN Tony Fox
OSSN Ed Hilleshiem
OSSN George Mattie
OSSN Jeff Prather
OSSN Gary Simpson
OSSN Chuck Storm
OSSN Ken Weber
OSSA Mark Cantrell



Electronic
Warfare
Technician (EW)



Kneeling: OSC Petersen, OSSN Hilleshiem, OSSA Cantrell, OS1 Baumgartner, OS3 Tremblay. Standing: OSSN Mattie, OSSN Buffard, OSSN Fox, OSSN Prather,

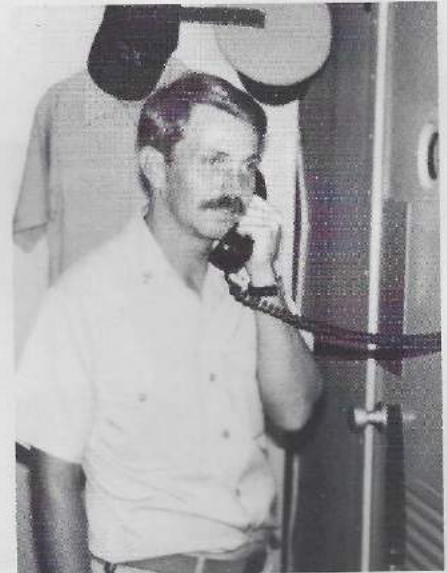
OS2 Goedelman, OS3 Simon, OSSN Bridges, OSSN Cross, OS2 Chidester, OSSN Brophy, OSSN Beard, OS2 Wiggins.



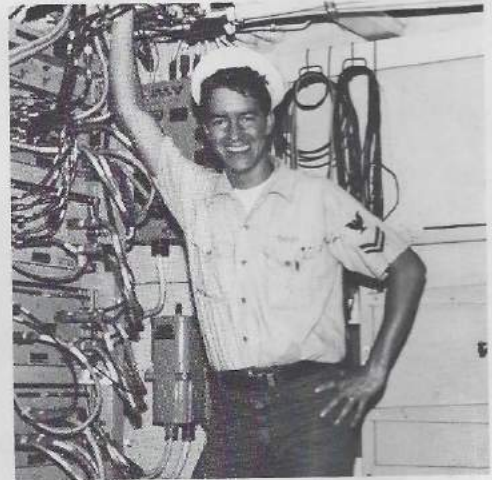
CIC Officer
LT. Gear

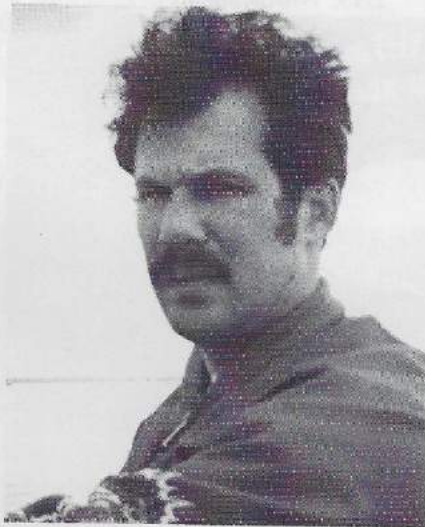
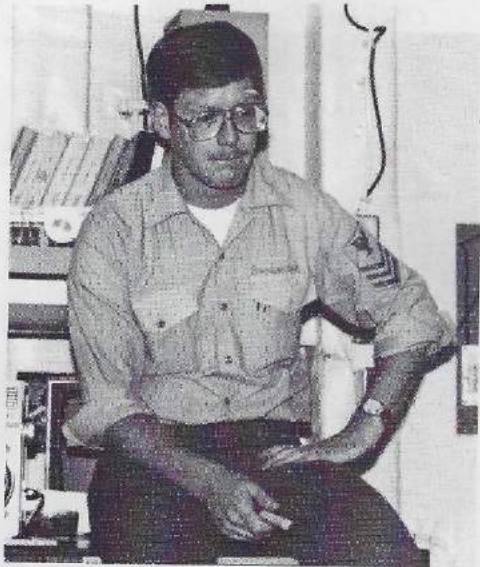


Division Officer
ENS. Mooshagian



LCPO
OSC Petersen







USS Leftwich



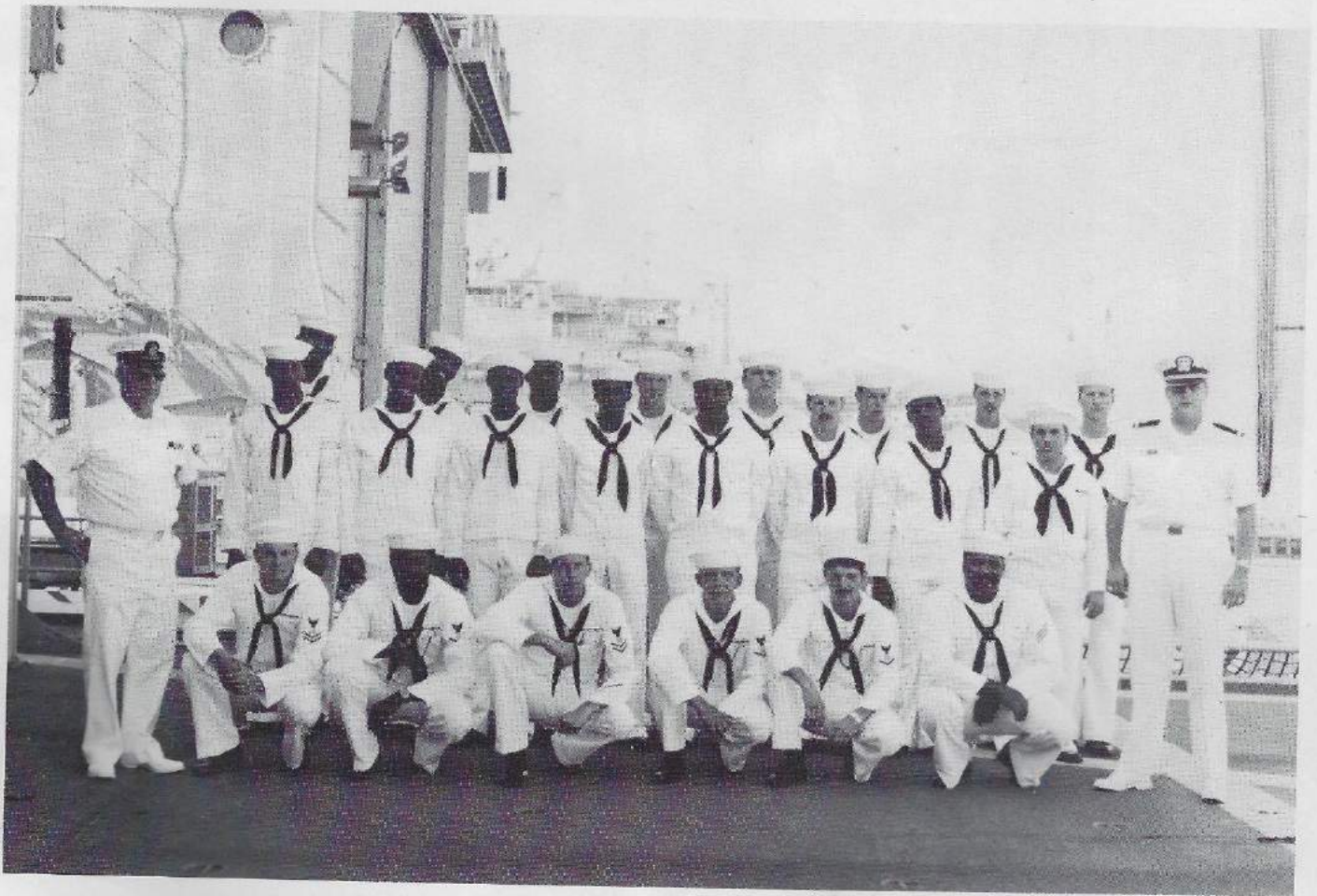
West Pac '82-'83 Softball Champions



OD Division

Personnel

LTJG STIEHL	BM2 GOYNG	SN MILLS	SA GOODINE
BMC HOWARD	BM2 BROOKS	SN NELSON	SA JONES
BMC LUCY	BM2 KNUDSEN	SN OSTENDORF	SA MARTIN
BM1 ESCOMIENDO	BM3 BOERGER	SN PAYNE	SA RICHMAN
BM2 BERZAC	BM3 MONROIG	SN PINCHON	SA RICHMOND
BM2 BEERS	BM3 JENSEN	SN STEVENS, G.	SA VANDYKE
BM2 REILLY	SN BETTIS	SN STEVENS, J.	SR CHANEY
BM2 THOMAS	SN BROWN	SN WELLS	SR GUERRO
BM2 SABINS	SN DARDEN	SA ANDERSON	SR HUTTON, C.
BM2 HEISKANEN	SN KILEY	SA ELLORIN	SR HUTTON, S

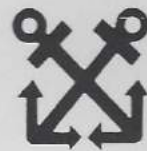


Front (Kneeling): BM2 Beers, BM2 Brooks, BM2 Sabins, BM2 Knudsen, BM2 Heiskanen, SN Boseman. Second Row (Standing): BMC Lucy, SN Bragg, SR Hutton, SR Hutton, SR Davis, SN Pinchon, SN Stevens,

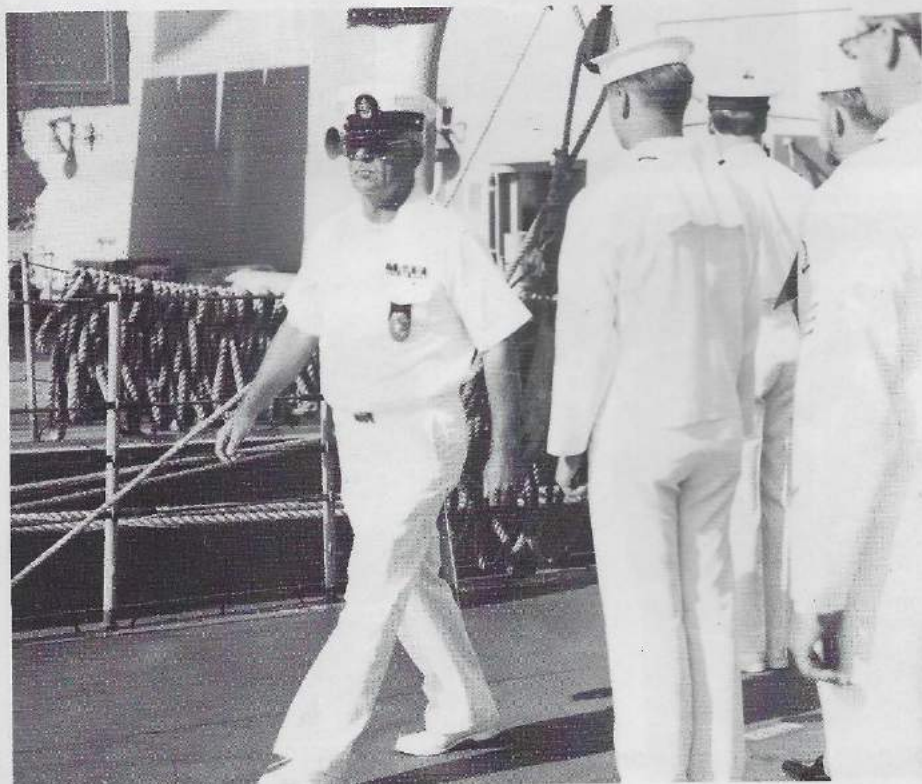
SA Chaney, SA Jones, ENS Stiehl. Third Row (Standing): SN Brown, SA Richmond, SA White, SA Richman, SN VanDyke, SN Darden, SN Payne, SN Bettis.



LTjg Stiehl, Division Officer



Boatswain's
Mate (BM)



BMC Lucy, Division Chief



Refueling at sea station three (L. to R.): SN Bettis, BM3 Sabins, SN Kiley, BM3 Jensen, SA Richman



Refueling at sea station seven (L. to R.): SN Ostendorf, LCDR Ames, BMSA VanDyke, BM2 Heiskanen, LTJG Stiehl.



(L. to R.): SA Pate, SA Jones, SA Yeaton



BM2 Brooks, Landing Signalman enlisted



SA Richman



(L to R): SA Pate, SA Ellorin, SN Nelson, BM2 Goynes, SA Martin



SN Nelson

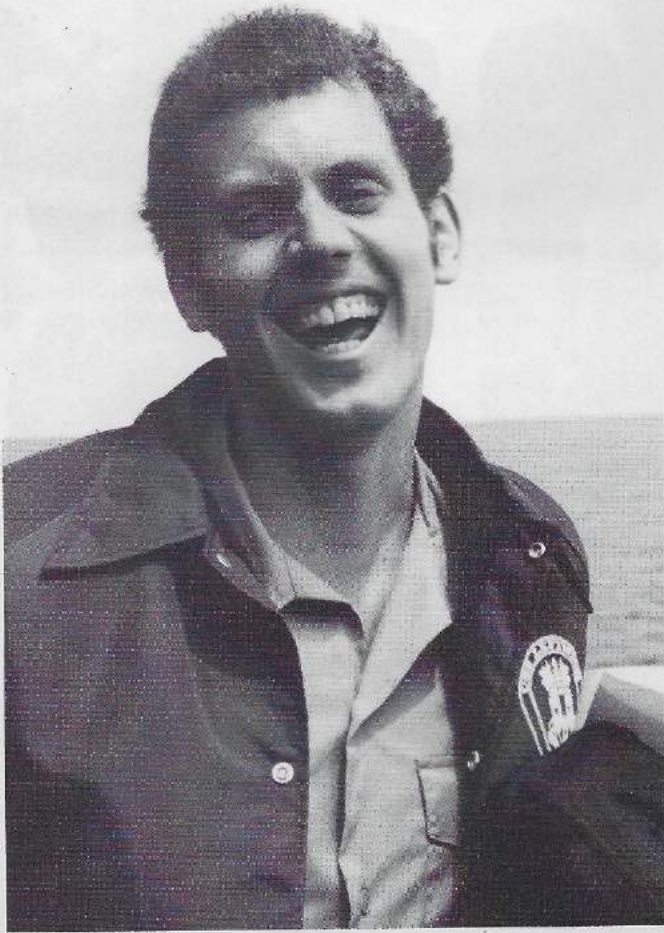


OC Division

Personnel

ENS KEHOE, RMC STEEN, RM1 MILLER, RM1 PERNA, SM1 VASSAR, SM2 MECUM, RM2 MILLER, RM2 GAMBLIN, SM3 RIFENBARK, SM3 ROSENGARTH, RM3 MARSHALL, RM3 GRANGER, RM3 BECK, RM3 GARDNER, SN SMITH, SMSN PEEBLES, SMSN MOORE, SMSN HOLMES, SMSN ROBERTS, RMSN PAYNE, RMSN DENNIS.

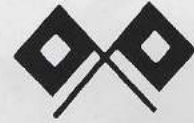




Division Officer, ENS Kehoe



Radioman (RM)



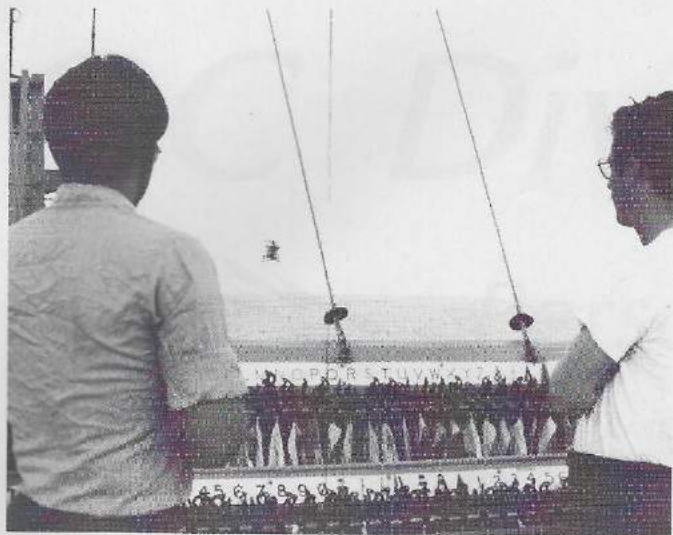
Signalman (SM)



RMC Steen



SM1 Jassar, RM1 Miller, RM1 Perna



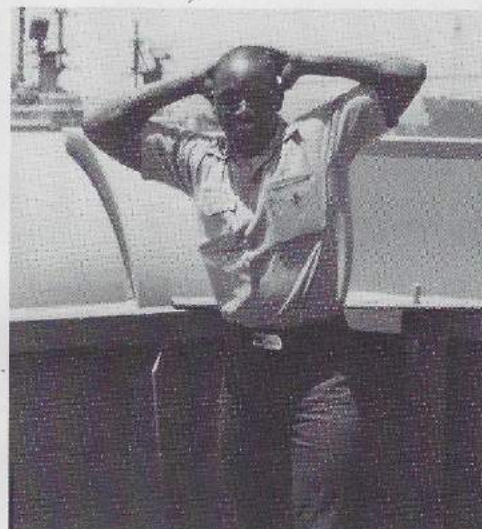
SM3 Rifembark awaits a incoming helo



SM3 Rifembark confures with his Supervisor, SM3 Mecum



RM1 Perna



RMSN Adams



RM3 Granger



SM3 Rifembark, SM3 Rosengarth, and SM2 Mecum, prepare to answer a flag hoist signal



Newcomer, RM2 Hanf



RMSN Dennis



RM1 Miller, seldom seen out of radio, enjoys the adventure of getting underway



SMSN Holmes spots a contact



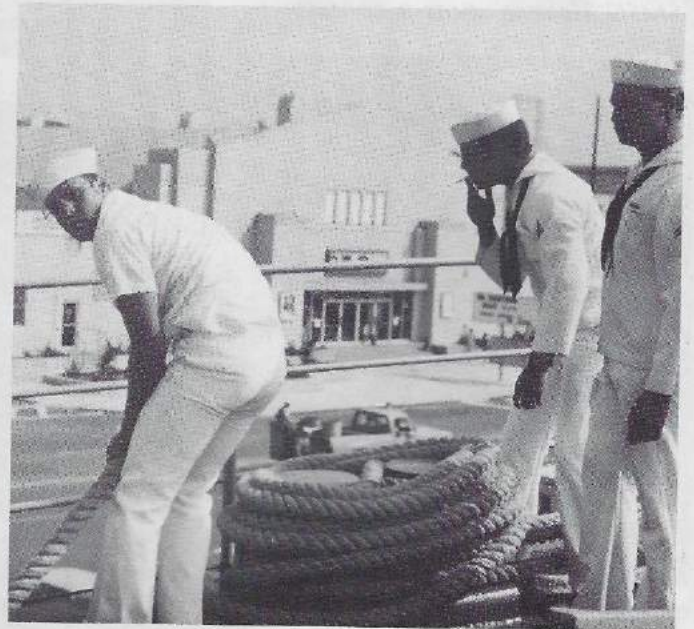
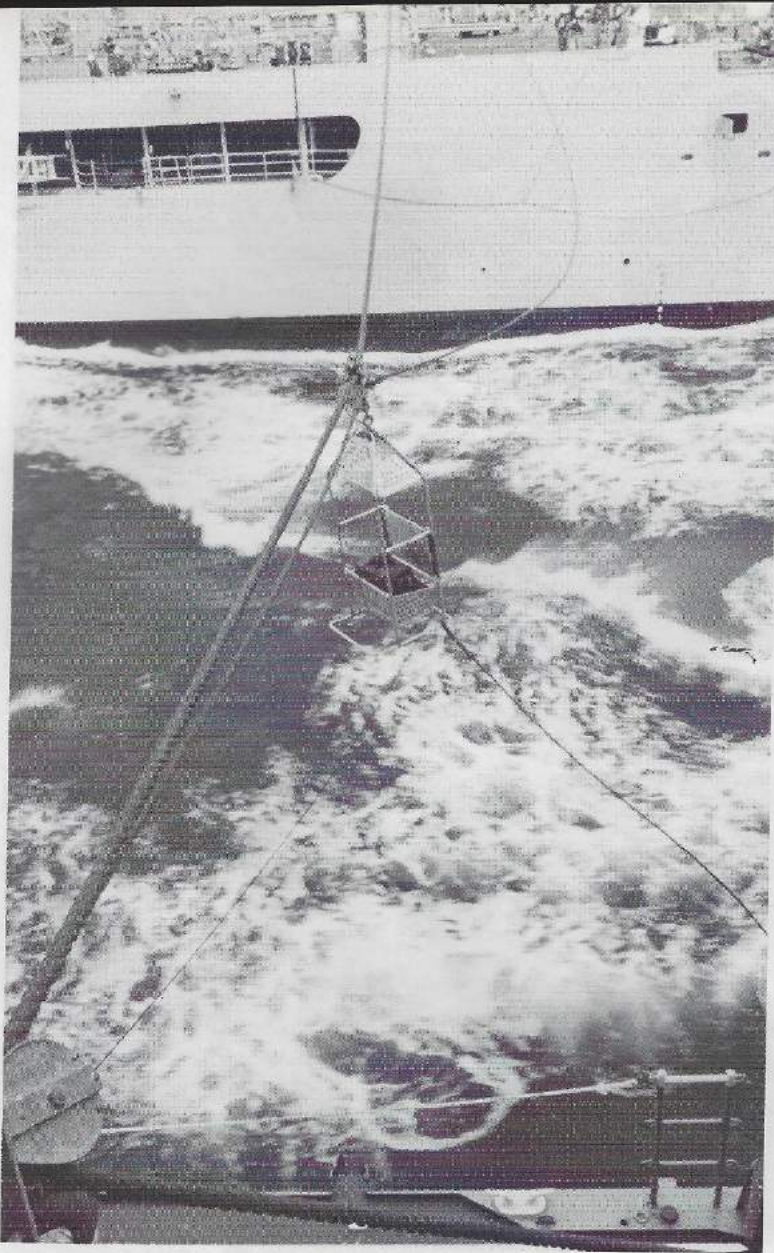
(L to R) SM1 Jassar, SM3 Rosengarth, SM2 Mecum, SM3 Rifenbark, SMSN Roberts.



SM3 Rosengarth, takes a break after a hard day of signaling



SM3 Rifenbark ponders life





Disbursing Clerk
(DK)



Ship's Service-
man (SH)



Mess
Management
Specialist (MS)



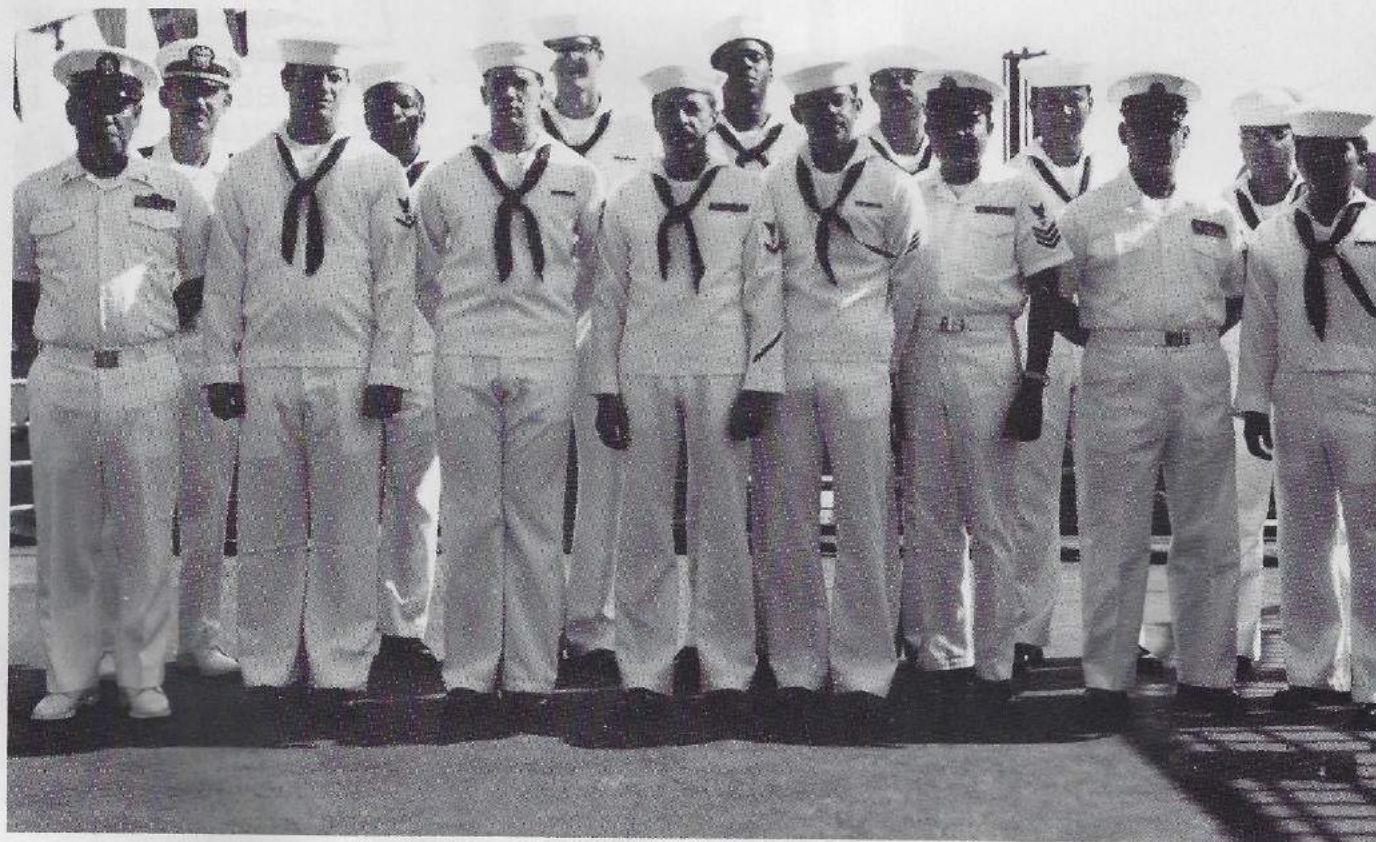
Storekeeper (SK)

Supply

Supply

Personnel

LT PETRILL	SH3 TORRES
LTJG DUDLEY	SHSN KNUDSON
SKC LOPEZ	SHSN REA
MSC GASMEN	SHSA PALMER
DK1 MAONGDO	MS1 QUINTOS
DK3 SKILLMAN	MS1 DAVIS
DKSN CHURCH	MS1 NACNAC
SK1 SORALLES	MS2 RAMERUS
SK2 DORNBOS	MS3 SALAS
SK2 POQUIZ	MSSN MALIC
SKSN KAVANAUGH	MSSN MATHENEY
SKSA HARVEY	MSSN GERRERD
SHSN BIXLER	MSSN MACNEW
SH2 ARMSTRONG	MSSA BOSEMAN
SH3 RODRIGUIZ	MSSN RUDY

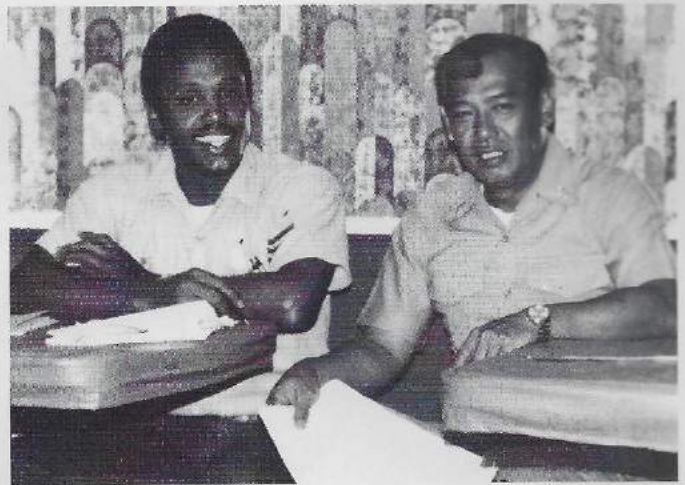


Left to right MSC Gasmen, LTjg Dudley, SKSN Bixler, DK3 Skillman, DKSN Church, SK2 Dornbos, SHSA Palmer, SH3 Scott, SH3 Torres, SH2 Armstrong,

SH1 Tubig, SK2 Viliana, SH1 Markham, SH3 Rodriguiz, SK2 Poquiz.



*Division Officer
LTJG Dudley*



MS1 Davis, MSC Gasmen

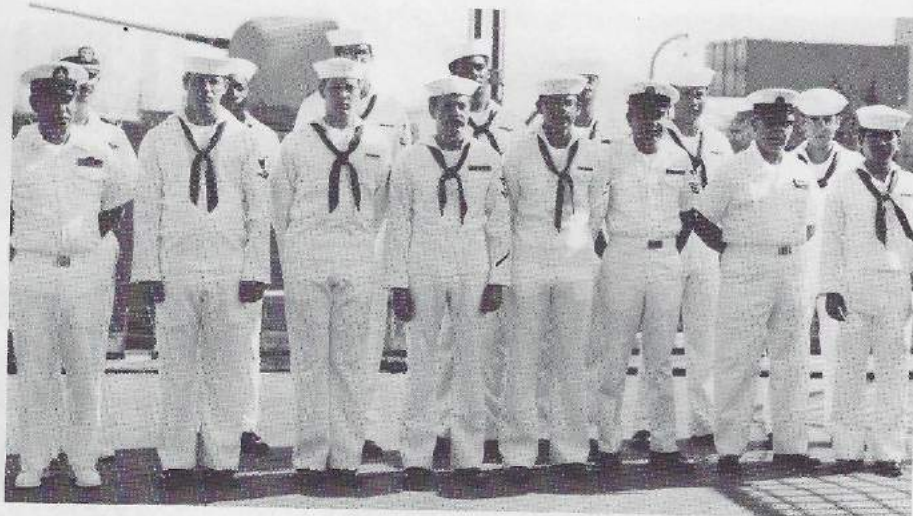


SKC Lopez

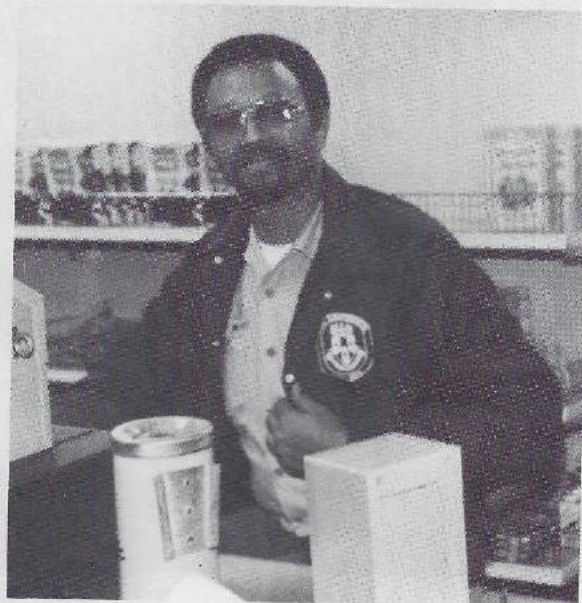
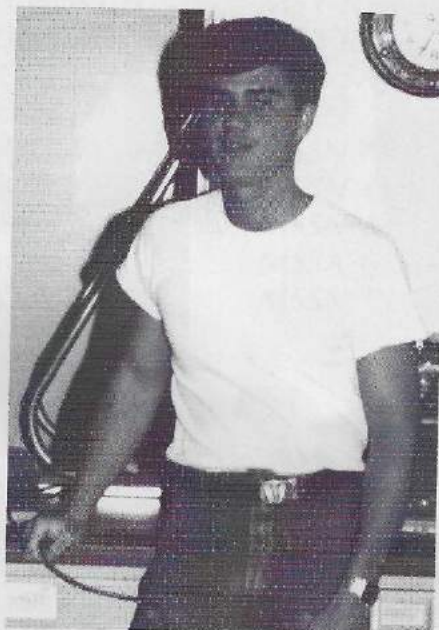


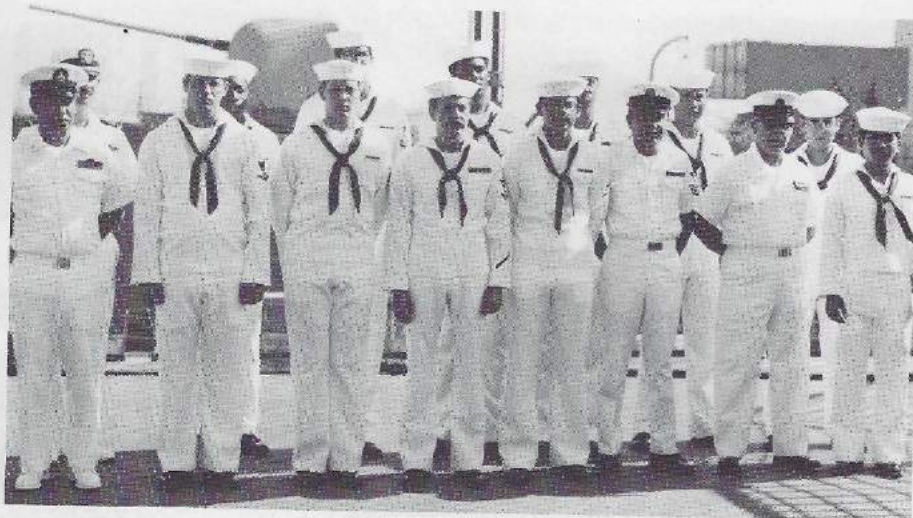
Above L/R MS1 Quintos, MS2 Rameres, MSSN Matheney, MSSN Malic, MSSN Rucy, MS3 Salas, MSSN

Gerard, MS1 Nacnac, MSSN Boseman, MS1 Davis OJ, GSM1 Davis R

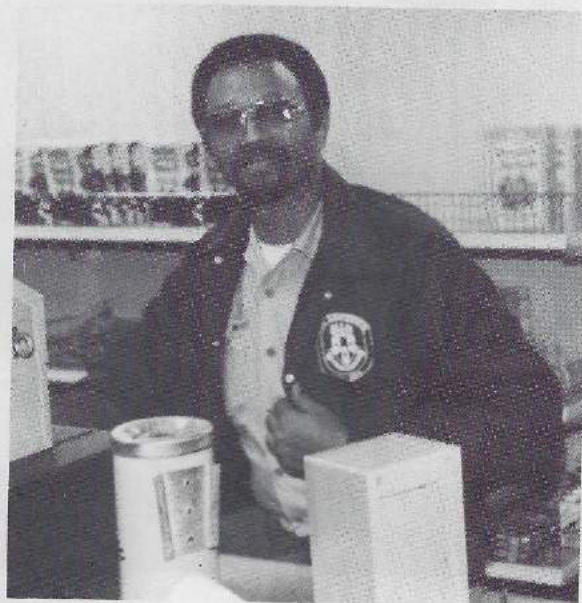


*Service
To The
Fleet*





*Service
To The
Fleet*



HSL-35 Det. 2

Personnel

LCDR KEN KRAPER, LT PAUL R. DORIN, LT ROBIN RATHBUN, LT DOUG BERG, LT JOHN J. RENDINE, LTJG GREG GALLAGHER, AXC KAROLY SZASZ, AE1 SAL ARTATES, AMH2 GERRY AQUINO, AD2 MARK BEMIS, AW2 WALDO KEYS, AE2 JEFF HALVORSON, AT2 CURT HOLLOWAY, AT3 DOUG HOLMES, AW3 WAYNE CLARK, AW3 RICHIE COLBY, ADAN STAN PRINGLE, AMHAN BRYAN KATT



Standing L/R LT John J. Rendine, AXC Karoly Szasz, ADAN Stan Pringle, AMHAN Bryan Katt, AE1 Sal Artates, LT Paul R. Dorin, LCDR Ken Kraper. Kneeling

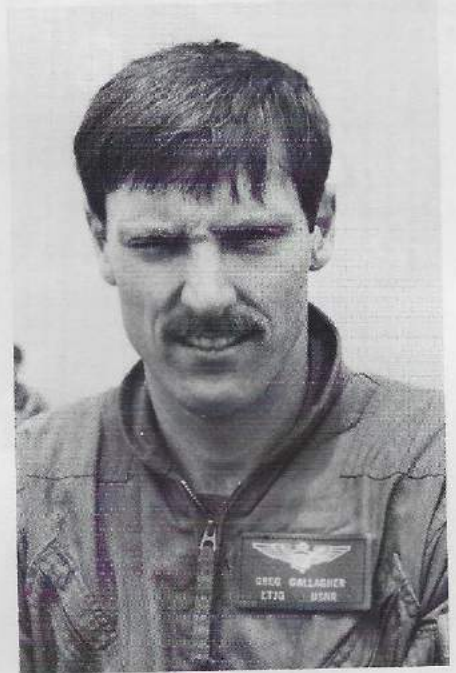
AW3 Wayne Clark, AW3 Richie Colby, AW2 Waldo Keys, AMH2 Gerry Aquino, AD2 Mark Bemis, AT3 Doug Holmes, AT2 Curt Holloway.



LT John J. Rendine

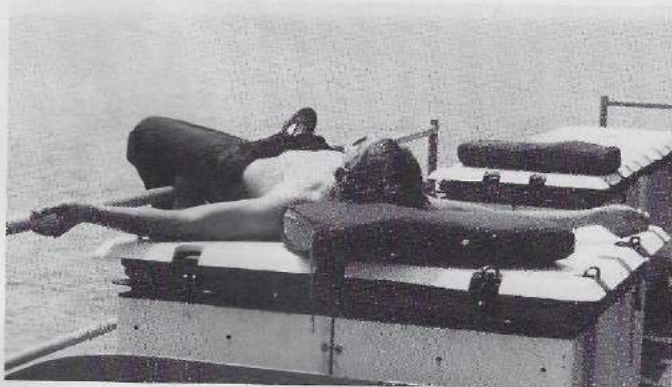


LT Robin Rathbun



LTjg Greg Gallagher







The Staff

*LTJG Dudley
ENS Greg Lundeen
QM2 Taylor
ET3 Smith
OS3 Parr
EM3 Brown
GSM2 Schulz K.
EN2 Lehoe
OSSN Matti
GMGC Snyder
GSM2 Vrabel
OS1 Baumgartner
EW2 Tansey
EN2 Heath
SKC Lopez
LTJG Talwar
ENS Copeman
ICC Jenkins
HT2 Sawtelle*

*And the support of many
others too numerous to mention.*

