

IRAN

PAKISTAN

GULF OF OMAN

SAUDI
ARABIA



OPERATION:
NIMBLE ARCHER

INDIAN OCEAN

WESTPAC '88

INDIA



7

DRAWN BY ETS MAUPIN & ETS DWIGSEN

BATTLE GROUP SIERRA



BATTLE GROUP ECHO



USS LEFTWICH DD 984



USS LEFTWICH (DD 984) is the twenty-second SPRUANCE Class Destroyer to be designed and built by Ingalls Shipbuilding Division of Litton Industries in Pascagoula, Mississippi. Homeported in Pearl Harbor, Hawaii, LEFTWICH is assigned to Destroyer Squadron Twenty-Five.

The SPRUANCE Class Destroyer is unique among today's warships in that it is the first major class to be powered strictly by gas turbine engines. LEFTWICH, as her sister ships, is powered by four General Electric LM-2500 engines. Designed originally for large aircraft (C-5A/747), these engines have been modified for marine use and produce 20,000 horsepower each. Her engines, in conjunction with twin controllable-reversible pitch propellers, are capable of moving LEFTWICH through the water at speeds in excess of 30 knots and give her a degree of maneuverability unequalled by any other warship her size. LEFTWICH's electrical generation plant is also driven by gas turbine engines (three Allison 501's) which are designed to output 2000 KW each.

Crew comfort and habitability were also of prime consideration in LEFTWICH's design. Berthing areas are spacious and considerable care was taken to equip the ship with features uncommon to most destroyers. Such features include a ship's library, crew lounge, a well equipped gymnasium and many other items aimed at crew's comfort.

As a highly versatile multi-mission destroyer, LEFTWICH is capable of operating independently or in company with amphibious or carrier task forces. Although equipped to handle a wide variety of mission areas, LEFTWICH's primary missions are Anti-

Submarine Warfare (ASW) and Strategic Strike Operations. LEFTWICH possesses some of the most advanced ASW equipment coupled with extensive sound silencing features to facilitate her accomplishment of these complex and demanding tasks. The ship is equipped with a sophisticated bow-mounted sonar, the SQS 53A, that is capable of active or passive detection and tracking of submarine contacts. In addition to her sonar, LEFTWICH's ASW weapons suite consists of one or two helicopters, an Anti-Submarine Rocket (ASROC) launching system and two triple barreled Mark 32 torpedo tubes. All of these systems integrate with a digital computer system, the Naval Tactical Data System (NTDS). For the Strategic Strike mission area, LEFTWICH is equipped with TOMAHAWK, the Navy's latest cruise missile system. This integrated combat system with its enhanced target information processing capability and resultant reaction time provides LEFTWICH with an accurate, long-range strike capability against surface targets unprecedented in destroyer-sized ships.

LEFTWICH also boasts two 5-inch/54 caliber Mark 45 fully automatic gun mounts controlled by the digital Mark 86 Fire Control System. Additionally, the Harpoon antiship cruise missile, NATO Seasparrow Missile System and two Close-in Weapons System (CIWS) mounts are consolidated into the weapons suite providing offensive and defensive fire-power. Integrated with NTDS, these systems allow LEFTWICH to excel in her secondary missions of Naval Gunfire Support, Surface Warfare, and Anti-Air Warfare.

USS LEFTWICH (DD984) began her 5 1/2 month deployment to the North Arabian Sea and the Indian Ocean on July 27, 1987. Embarked on LEFTWICH was Commander, Destroyer Squadron THIRTY-FIVE and his staff, also homeported out of Pearl Harbor. Also, embarked were the Air Crew and Pilots of Helicopter Squadron (HSL-37) Detachment 5 based out of Barbers Point, Hawaii. LEFTWICH is the first SPRUANCE Class destroyer to deploy with two SH-2F Light Airborne Multi-Purpose System (LAMPS) MK I Helicopters.

The ship's 400-man crew steamed across the Pacific to Subic Bay, Republic of the Philippines for last minute preparations for the deployment. LEFTWICH then traveled to the North Arabian Sea where she spent 102 straight days at sea as part of the MISSOURI Battleship Battle Group SIERRA prior to entering its first port. LEFTWICH steamed in company with USS MISSOURI (BB 63), USS BUNKER HIL (CG 52), USS LONG BEACH (CGN 9), USS KANSAS CITY (AOR 3), USS CURTS (FFG 38), AND USS HOEL (DDG 13). LEFTWICH conducted several operations in support of the reflagged tanker escort missions.

The highlight of the cruise was LEFTWICH's participation in Operation NIMBLE ARCHER, the naval gunfire attack on Iran's Rashadat Oil Platform in the Persian Gulf on October 19, 1987. The operation was the first direct retaliation for an Iranian attack against a U.S.-flagged vessel. LEFTWICH was the lead ship of a four ship Surface Action Group (SAG) tasked with the attack. The destroyers that took part in the attack were USS LEFTWICH (DD 984), USS KIDD (DDG 993), USS HOEL (DDG 13), and USS JOHN YOUNG (DD 973). Over 1000 rounds were fired against the platform, over 460 were from LEFTWICH. Commander of the SAG was Commander, Destroyer Squadron THIRTY-FIVE, Captain I. Larguer, Jr. onboard LEFTWICH.

During the transit home, LEFTWICH made port visits to Fremantle, Western Australia; and Sydney, Australia. Crewmembers enjoyed sightseeing and shopping during the Holiday Season. Many crewmembers opened their hearts to make donations and to visit some of the orphanages and children's hospitals during our visits in Australia.

USS LEFTWICH



DD-984

THE SHIP'S CREST

The colors blue and red are symbolic of loyalty and courage, attributes of Lt. Col. Leftwich who was killed in action in Vietnam. The areas of blue refer to the lowlands or delta areas of Vietnam and the yellow sections rising toward center allude to the highlands. The chevron-like shape, simulating a mountain, stands as a symbol of Lt. Col. Leftwich's courageous effort during an emergency extraction by helicopter from enemy infested territory during which he met his death. The vertical band refers to the numerical designation of the First Marine Division, the organization with which he served. The gold stars allude to the awards of the Silver Star Medal.

The gold cross patty represents the award of the Navy Cross. The trident and dolphins are symbolic of vigilance and maritime dominance.

SHIP DESIGN CHARACTERISTICS

Built By	Ingalls Shipbuilding Division of Litton Industries Pascagoula, Mississippi
Keel Laid	12 November 1976
Christened	27 May 1978
Commissioned	25 August 1979
Sponsor	Mrs. Jane (Leftwich) Michael
Length	563 Feet 4 Inches
Beam	55 Feet
Draft	30 Feet
Displacement	8500 Tons
Complement	Officers-21 Enlisted-310
Speed	30+ Knots
Armament	Two 5 inch 54 Caliber Gun Mounts Mk 112 ASROC Launcher Two Mk 32 Torpedo Tubes NATO Seasparrow Harpoon Close In Weapons System (CIWS) Tomahawk
Aircraft	One SH-3 or Two SH-2 Helicopters
Propulsion . Four General Electric LM 2500 Marine Gas Turbine Engines (Total - 80,000 Shaft Horsepower)	



LCOL W. G. Leftwich, Jr., USMC

Lieutenant Colonel William G. Leftwich, Jr., was born on April 28, 1931 in Memphis, Tenn., and graduated from Central High School in that city. He was commissioned a Marine Second Lieutenant on June 5, 1953 upon graduation from the United States Naval Academy. As brigade captain in his senior year at the Naval Academy, he was specially commended at graduation for exemplary officer like qualities which contribute "to the development of naval spirit and loyalty within the Brigade."

Upon entering the Marine Corps, he completed The Basic School at Marine Corps Schools, Quantico, VA., in January 1954, and later served as a rifle platoon commander with the 2nd Marine Division at Camp Lejeune, N. C. During 1955-56, he served with the 3rd Marine Division on Okinawa. On his return to the United States, he was stationed at Camp Pendleton, California, where he was promoted to captain in July 1957. He then began a three-year assignment at the Naval Academy, serving as a company officer. An excellent athlete himself, he also voluntarily performed collateral duty as assistant varsity tennis coach and battalion football coach.

In 1960, he rejoined the 2nd Marine Division, serving as a company commander until 1962 when he was named aide-de-camp to the Commanding General. In June 1963, he was assigned as aide to the Commandant, Marine Corps Schools, Quantico. He was promoted to major in July 1964. He later completed a course of study in the Vietnamese Language prior to reporting for duty in Vietnam in January 1965 as Assistant Senior Advisor to the Vietnamese Marine Brigade.

Joining Task Force Alfa, he participated in 27 major operations against the Viet Cong in the central highlands of Vietnam, and spent more than 300 days in the field. He was wounded in the battle of Hoai An, March 9, 1965 and, besides the Purple Heart, was awarded the Navy Cross for extraordinary heroism. According to his citation, he "... played a major part in all phases of the successful relief of the village of Haoi An, which was under heavy enemy attack by two Viet Cong battalions ... By his own personal example ... he led the attack ... Despite injuries by enemy machine-gun bullets in the back, cheek, and nose, he went to the aid of a mortally wounded comrade ... and delayed his own evacuation until he could call for

additional air strikes and brief the task force commander of the situation."

He returned to the United States in January 1966, served as an instructor at the Basic School, then completed the Command and Staff College in June 1967 and was promoted to Lieutenant Colonel in November 1967 while serving as a systems analyst with the Manpower Management Information Branch, G-1 Division. He later became head of the Systems Analysis Section.

In 1968, LtCol. Leftwich was selected by the Under Secretary of the Navy to be his Special Assistant and Marine Corps Aide. He served in this capacity under the Honorable Charles F. Baird, and Mr. Baird's successor as Under Secretary of the Navy, the Honorable John W. Warner.

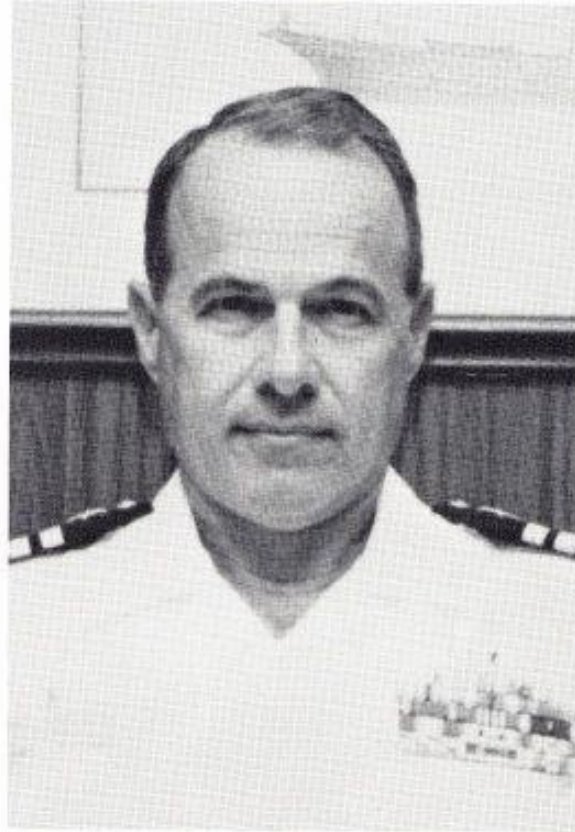
In April 1970, he began his second tour of duty in Vietnam, serving initially as an infantry battalion commander with the 2nd Battalion, First Marines. On June 30, he assumed duty as Commanding Officer of the 1st Reconnaissance Battalion, 1st Marine Division (Reinforced).

On November 18, 1970, LtCol. Leftwich was killed in a helicopter crash during an emergency extraction of one of his reconnaissance teams. In accordance with his practice of accompanying every emergency extraction called for by his reconnaissance teams, he was serving as senior "extract officer" for such a mission on the day of his death. The team had incurred casualties and requested an emergency extraction from enemy-infested territory in an area beginning to be enveloped by dense fog. The team was extracted under LtCol. Leftwich's personal supervision, then, the helicopter began its ascent, it crashed into a mountainside in enemy territory, killing all aboard.

A partial list of his medals and awards includes: The Navy Cross, the Silver Star (posthumous), the Legion of Merit with Combat "V" and two gold stars, the Meritorious Service Medal, the Air Medal with one gold star, the Purple Heart with two gold stars, and various personal awards from the Republic of Vietnam.

LtCol. Leftwich was survived by his wife, the former Jane Ferrer, and two sons, William G. III, and Scott F. He was also survived by his mother, Mrs. Mattie H. Leftwich of Memphis. His father was deceased.

COMMANDER DESTROYER SQUADRON THIRTY FIVE



CAPTAIN I. LARGUIER, JR., USN

Captain Larguier was born in Baton Rouge, Louisiana. He was commissioned in the U.S. Navy upon graduation from Officer Candidate School, Newport, Rhode Island on 18 December 1964. Past assignments include tours as Communications Officer and Combat Information Officer on USS FLOYD B. PARKS (DD 884), Executive Officer on USS CLARION RIVER (LSMR-409) and Operations Officer and Engineer Officer on USS BRONSTEIN (FF 1037). In 1970, he assumed duties as Commanding Officer, USS ENDURANCE (MSO 435). From 1972 to 1974, Captain Larguier was a student at the U.S. Naval War College in Newport, Rhode Island and at the Defense Language Institute in Monterey, California. From 1974 to 1976, he served as an exchange officer at the Brazilian Navy Training Center in Rio de Janeiro, Brazil. Following his return from Brazil he served as Executive Officer, USS MORTON (DD 948) homeported in Pearl Harbor, Hawaii. In 1978, he reported to the Staff, Commander in Chief United States Pacific Command where he served until 1979. From 1979 to 1980, Captain Larguier was a student at the U.S. Army War College in Carlisle, Pennsylvania. Following graduation from the U.S. Army War College he was ordered to the Organization of the Joint Chiefs of Staff, where he served in the Western Hemisphere Division, Plans and Policy Directorate. Captain Larguier assumed command of USS OUELLET (FF 1077) in September 1982. Following that tour he served on the Staff of Commander in Chief U.S. Pacific Fleet from February 1985 until July 1986.

Captain Larguier is authorized to wear the Defense Meritorious Service Medal, Meritorious Service Medal, Joint Staff Commendation Medal, Navy Commendation Medal, Navy Achievement Medal, Meritorious Unit Commendation, Navy Unit Commendation, Vietnam Service Medal with seven stars, Vietnam Navy Distinguished Service Medal (second class), and the Vietnam Cross of Gallantry with Palm Unit Citation. He is a proven subspecialist in Politico-Military Affairs (Latin America), and holds a Master's Degree from the George Washington University.

He is married to the former Masil Richard of Lafayette, Louisiana and they have two children, Christina and Monique.

COMMANDING OFFICER



COMMANDER DANIEL R. BOWLER, USN

Commander Daniel R. Bowler, a native of Annapolis, Maryland, attended the U.S. Naval Academy, graduating with the class of 1970.

Following commissioning, he served aboard USS TURNER JOY (DD 951) as the Main Propulsion Assistant. From November 1971 to August 1973, he served as Engineer Officer and Executive Officer of USS WELCH (PG 93). Commander Bowler then attended Georgetown University in Washington, DC, in 1973-1974 as a participant in the Junior Line Officer Science Education Program (Burke Program), earning a M.A. in International Relations. Returning to sea in November 1975, he served as Engineer Officer, USS ALBERT DAVID (FF 1050) through August 1977. After attending the Prospective Engineering Officer Course at the Nuclear Power Training Unit in Idaho Falls, he reported for duty as an Engineer Instructor, Department Head Course, and Plant Manager, 1200 PSI Propulsion Plant Trainer, Surface Warfare Officers School Command where he served from 1978-1980.

From April 1981 to October 1982, Commander Bowler served as Executive Officer, USS OUELLET (FF-1077). Following this tour, he served as Chief Staff Officer, Destroyer Squadron THIRTY-THREE from December 1982 to June 1984. He then served as Fleet Schedules and Services Officer on the staff of Commander, THIRD Fleet from July 1984 to November 1986.

Commander Bowler's awards include the Meritorious Service Medal, Navy Commendation Medal with Gold Star in lieu of second award, and the Navy Achievement Medal. He is married to the former Susan Maier of Adelphia, Maryland. They have two children, Shane and Brandy.

EXECUTIVE OFFICER



LCDR RICHARD R. ARNOLD, USN

LCDR Richard Arnold, a native of Boonville, Missouri, attended the U.S. Naval Academy, graduating with the class of 1975.

Following commissioning, he served aboard USS FANNING (FF-1076) as the Gunnery Officer. LCDR Arnold then attended the Naval Postgraduate School in Monterey, California from 1978 to 1980. He earned an M.S. degree in Administrative Science. Returning to sea in October 1980, he served as Combat Systems Officer aboard USS MERRILL (DD 976) through 1984. In July 1984, LCDR Arnold reported as Assistant Officer in Charge of the COMNAV-SURFPAC/LANT Tomahawk Tactical Qualification Team. In September 1985, LCDR Arnold was transferred to Fleet Combat Training Center, Atlantic, Dam Neck, Virginia as their first Cruise Missile Officer. LCDR Arnold assumed duties as Executive Officer, USS LEFTWICH (DD 984) in May 1987.

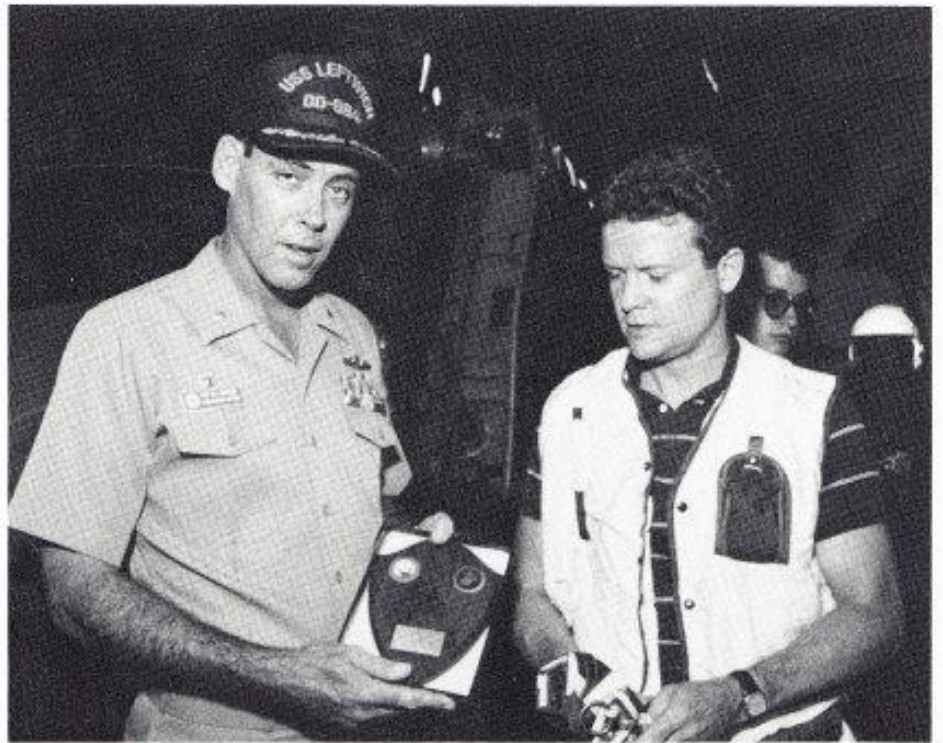
LCDR Arnold's home is Aiea, Hawaii. He is married to Jeannette Cutino of Monterey, California. They have two children, Katherine and John.

LCDR Arnold's Awards include the Meritorious Service Medal with Gold Star in lieu of second award and the Navy Commendation Medal.



CO







COMMAND MASTER CHIEF

A native of Lewiston, Idaho, Machinist Mate Master Chief Henry T. Carman enlisted in the Navy on 24 June 1958. During his thirty years of active service, he has served aboard the following commands: USS LOS ANGELES (CA 135), USS OZBORNE (DD 846), USS RICHARD B. ANDERSON (DD-786), USS INGERSOLL (DD652), USS ORLECK (DD886), USS ORISKANY (CVA-34), USS HANCOCK (CVA-19), USS CORRY (DD-817), Recruiter-in Charge Navy Recruiting Station Santa Monica, California, USS GOLDSBOROUGH (DDG-20), Fleet Training Group, Pearl Harbor Hawaii, Ship Intermediate Maintenance Activity (SIMA), San Diego, California, and Command Master Chief, Commander, Amphibious Group THREE.

Master Chief Carman wears the Navy Commendation Medal, the Navy Achievement Medal, two Navy Unit Commendation Medals, Seven Good Conduct Medals, and various service medals. He is married to the former Linda Kay Eller of Clarkston, Washington.

The Command Master Chief is the principal enlisted advisor to the Commanding Officer keeping the command aware of existing or potential situations and procedures which affect the welfare and morale, job satisfaction, and utilization of the enlisted crew members. He reports to the Commanding Officer via the Executive Officer.



NAVY CAREER COUNSELOR

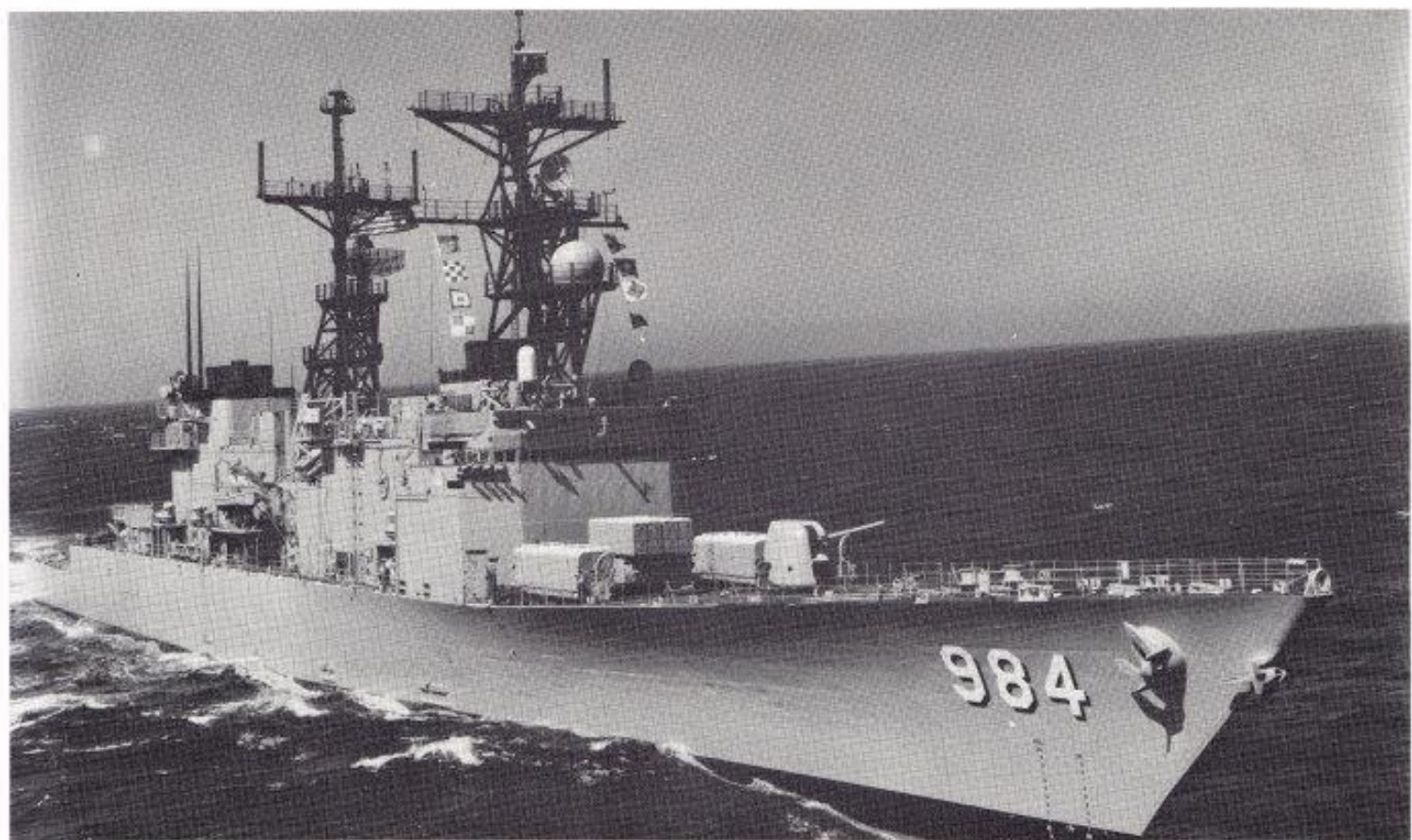
NCC (SW) Ralph Otto Taylor was born in Susanville, California on 1 September 1939. Chief Taylor enlisted in the US Marine Corps from November 1956 to June 1958. He later enlisted in the US Navy from June 1958 to May 1962 as a boatswain's mate. In November 1968, he enlisted again in the US Navy's Civil Engineering Corps. He later became a Navy Counselor in 1973. In his 26 years of service his tours have been aboard the following commands: 49th Special Light Infantry USMC, USS BENNINGTON (CVA 20), USS CORAL SEA (CVA 43), Chu Lai RVN, Adak AK, CBU 406, Recruiting Duty, VA-113, Naval Air Station Lemoore, and USS LEFTWICH (DD 984).

Navy Career Counselor Chief Taylor wears the Enlisted Surface Warfare Specialist Pin, Navy Achievement Medal, five Good Conduct Medals, and various unit and service medals. He is married to the former Anacoreta B. De Los Reyes of Balayan Batangas, Republic of the Philippines.

The Command Career Counselor is the principal advisor to the Commanding Officer on policies and regulations related to Navy Career planning matters, and a primary technical assistant supporting the Command's Retention Team.



THE CREW



OFFICERS



Front Row, L-R: LCDR Denton, LT Cooley, LT Butler, LT Carroll, LT Schueffele, LT Haupt Back Row, L-R: LT Huey, LTJG Alfaro, LCDR Prenzlou, LT Brown, ENS Burbeau, ENS Brown, LT Gray, LT Hunter, LT Matlock, LTJG McNear



L-R: LT Adamo, LT Phillips, LT Gray, ENS Eddingfield, ENS Cooper, LCDR Myers, ENS Burns, LT Waring, ENS Foret, ENS Goodwin, ENS Keutel, LTJG Kelley, LT O'Keefe, LT Flanagan, ENS Nickerson, CDR Spencer



CHIEF PETTY OFFICERS



L-R: AEC Konopacek, BMC Tanksley, DSC Gross



L-R: SKC Mercado, ICC Stephenson, GMC Kinard



L-R: MAC George, FCC Benninghaus



L-R: HMC Cajudo, STGC Gates, MSC Navarro, EMC Domingo



L-R: RMCS Homan, ETC Swope



L-R: EWC Couch, GSEC Parsons, ETC Hatfield, MSC Navarro, RMC White



L-R: GSMC McGhee, ETC Doody, OSCS Miller, FCCM Wooten, FCC Benninghaus



OPERATIONS DEPARTMENT



Operations Specialist



Radioman



Signalman



Boatswain's Mate



Electronic Warfare Technician

LCDR ELMER C. PRENZLOW, USN

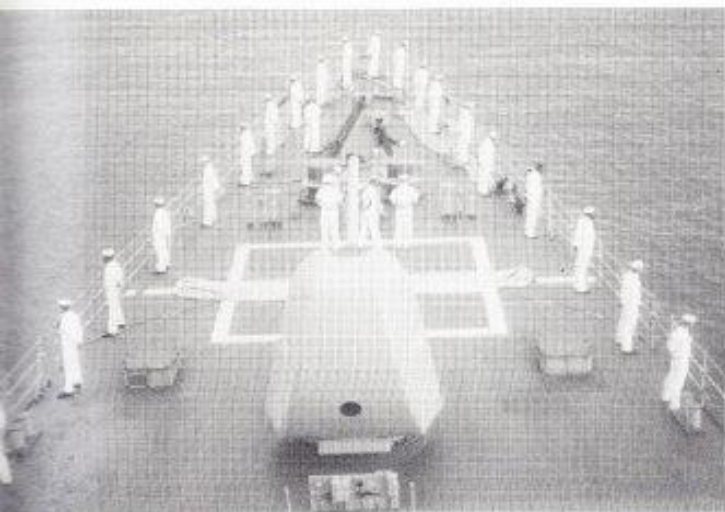
The Operations Officer is responsible for the general operations of the ship including the development of the ship's long range schedule. He is also the ship's principal training coordinator and is responsible for all deck and electronic surface warfare equipment, aviation, and communications facilities, and the proper performance of the Combat Information Center (CIC). The department is composed of four divisions: Combat Information Center-CIC (OI), Communications (OC), Deck (OD), and Electronic Signals Warfare (OW).

OI Division is manned by Operations Specialists (OS's) who are responsible for the operation of radar detection and identifications systems, management of various external communications including intership data links, and the operations in the ship's Combat Information Center.

OC Division is responsible for external communication via voice, teletype, data link, flashing light, semaphore, and signal flags. It is manned by Radiomen (RM's) who manage all electronic communications received by and transmitted from the ship, and Signalmen (SM's) who conduct visual communications.

OD Division is manned by Boatswain's Mates (BM's) who maintain the anchors, boats, mooring lines, and underway replenishment rigs. They stand bridge watches underway and man stations during various evolutions ranging from lookout to helmsman.

OW Division is manned by Electronic Warfare Technicians (EW's) who operate and maintain the AN/SLQ-32(V)2 Electronic Signals Warfare System. It is used in the detection, collection, and evaluation of electronic warfare information.





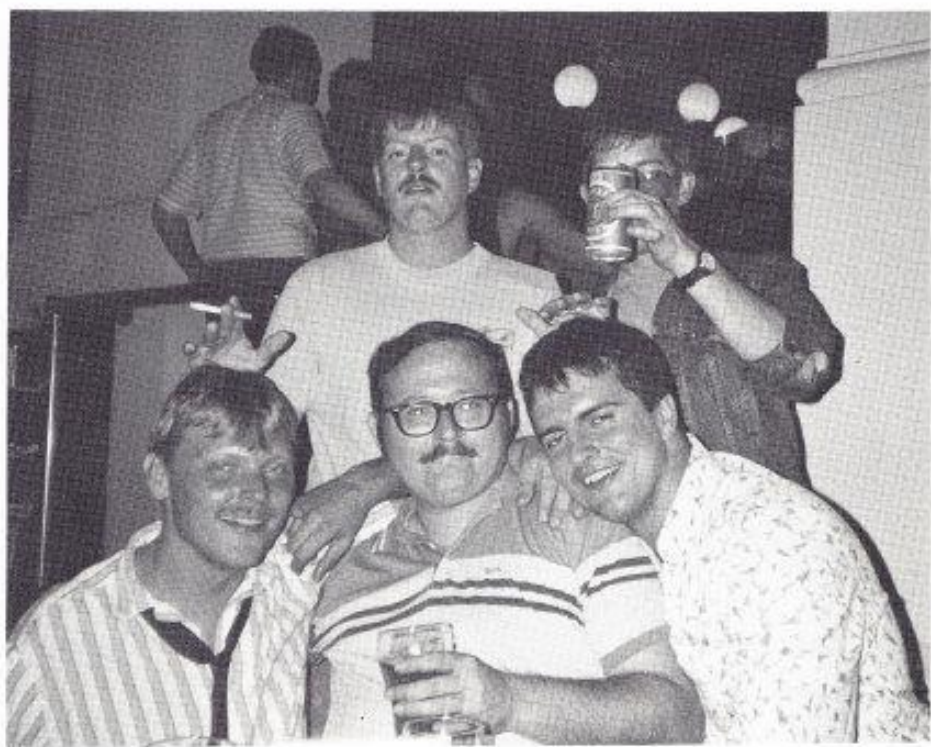
Front Row, L-R: LTJG Alfaro, OS2 Hunt, OS2 Ellis, OS3 Hayes, LTJG Kelley Back Row, L-R: OS2 Cogbill, OS2 Goatley, OS3 Crumes, OSSN Beam, OSCS Miller

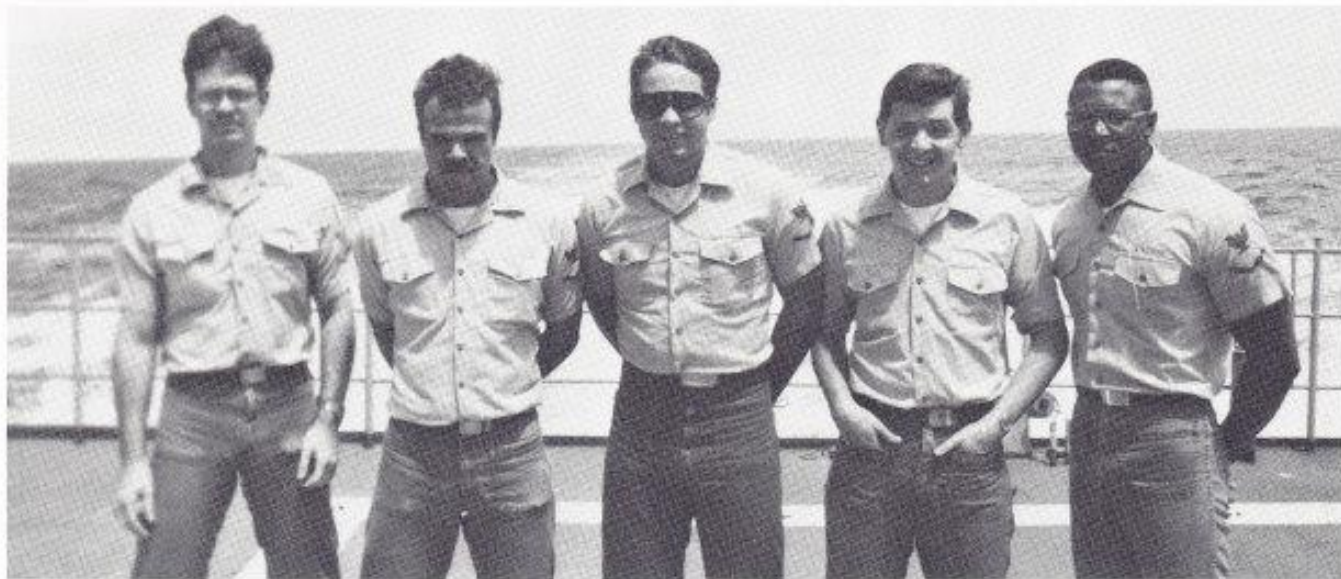
O
I

D
I
V
I
S
I
O
N



Front Row, L-R: OS3 Blake, OS3 York, OS1 Albritton, OSSN Azevedo, OS3 Froehle Back Row, L-R: OS3 Garrett, OS2 Bonwell, OS2 Sullivan, OSC Shelton, OS1 Sheridan, OS3 Henning





L-R: RM3 Conley, RM3 Bryant, RM3 Ferland, RMSN Madden, RM3 Benbow



L-R: RM2 Talbot, RM1 Huot, RM3 Lujan



Front Row, L-R: SM1 Jones, SM2 Drexler, RM2 Graham, SMSN Neal, ENS Goodwin Back Row, L-R: RM3 Banks, RM3 Floyd, RM2 Henson, SMSN Wysocki, SM2 Kerlin, RM3 Diaz-Pellot





**OD
DIV**

Front Row, L-R: SN Jarvis, BM3 Callaway, BM3 Smith Back Row, L-R: SN Jones, BM2 McIvor, SN Gray, SN Reardon, SN Combs, BM1 Junk



Front Row, L-R: SN Pascual, SN Strouse, SN Nolan Back Row, L-R: BM3 Elsken, BM1 Perry, BM2 Carlson, BM2 Haegele



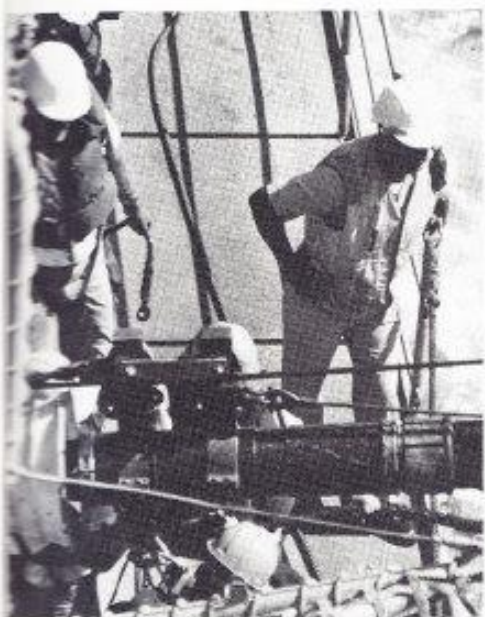
L-R: BMC Tanksley, BM3 Walz, BM2 Carlson, BM2 Haegele



L-R: SN Strouse, SN Swinney, SN Cardamone, SN Graham, SN Costigan, SN Alvarez, BM2 Rankin



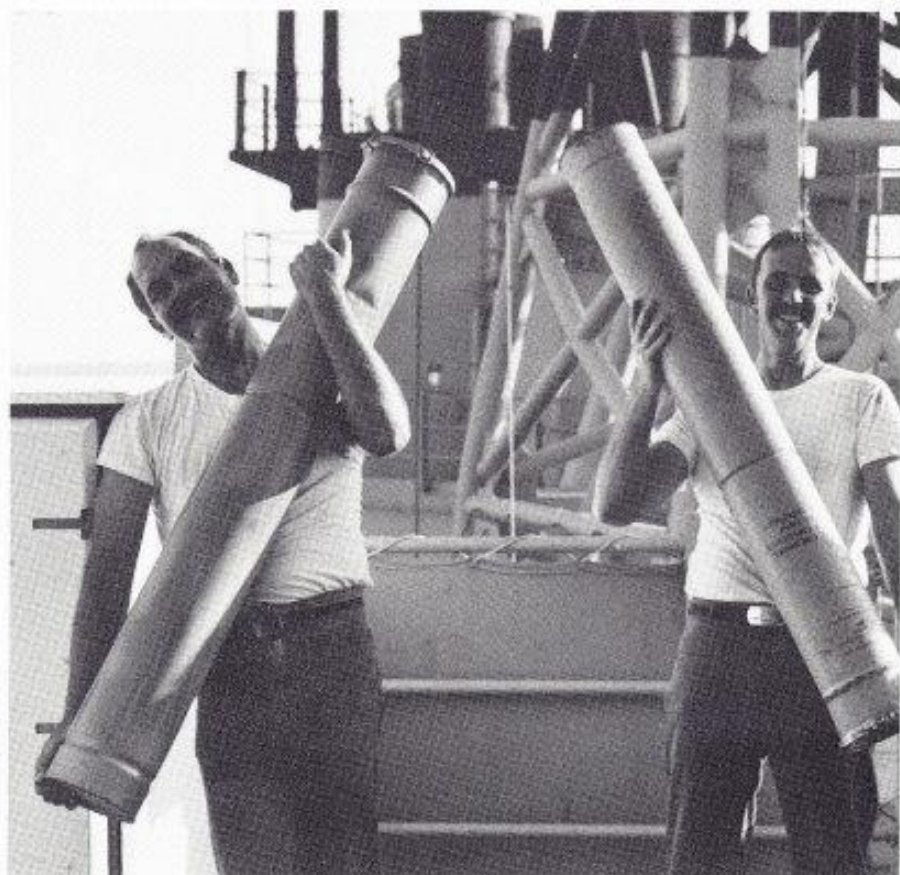
DECK

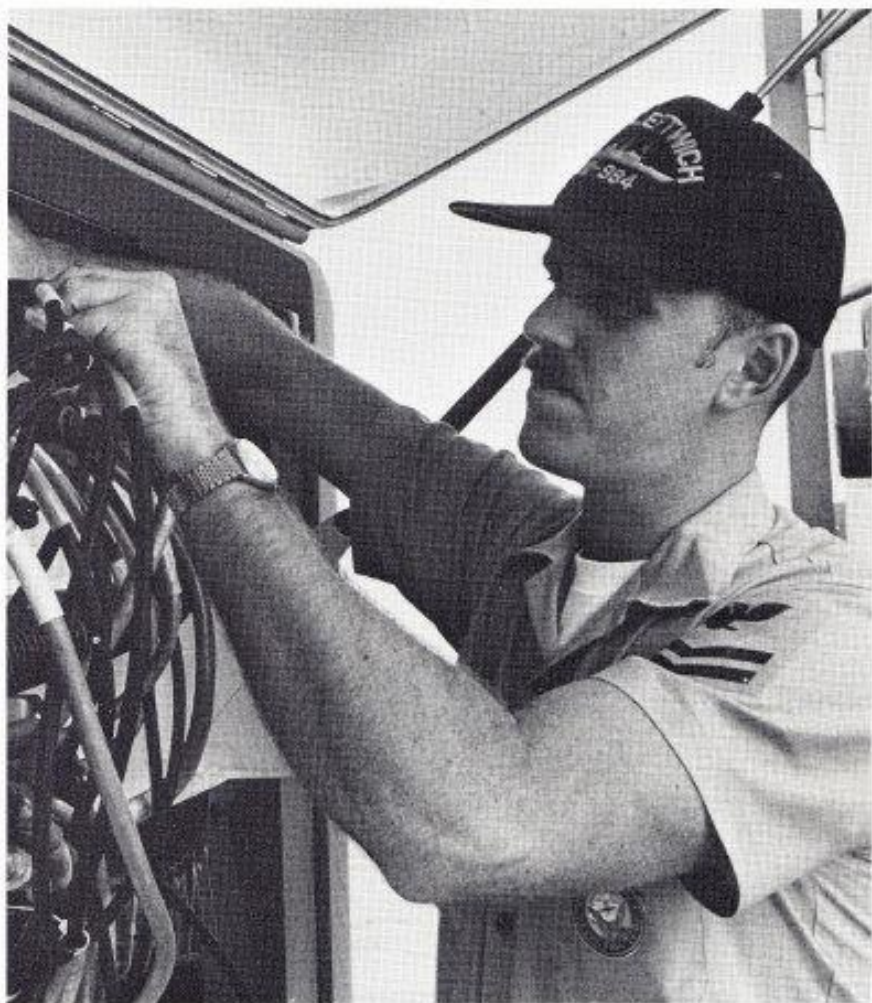




L-R: EW3 Cappiello, EW1 Erickson, EWSN Stillwell, EW2 Everett, EW2 Mullins, EW1 Lundgren, EWC Couch

OW DIVISION





COMBAT SYSTEMS DEPARTMENT



Fire Control Technician (Guns/Missiles)



Gunner's Mate (Guns/Missiles)



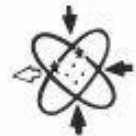
Sonar Technician



Torpedoman



Electronic Technician



Data Systems Technician

LCDR PATRICK D. MYERS, USN

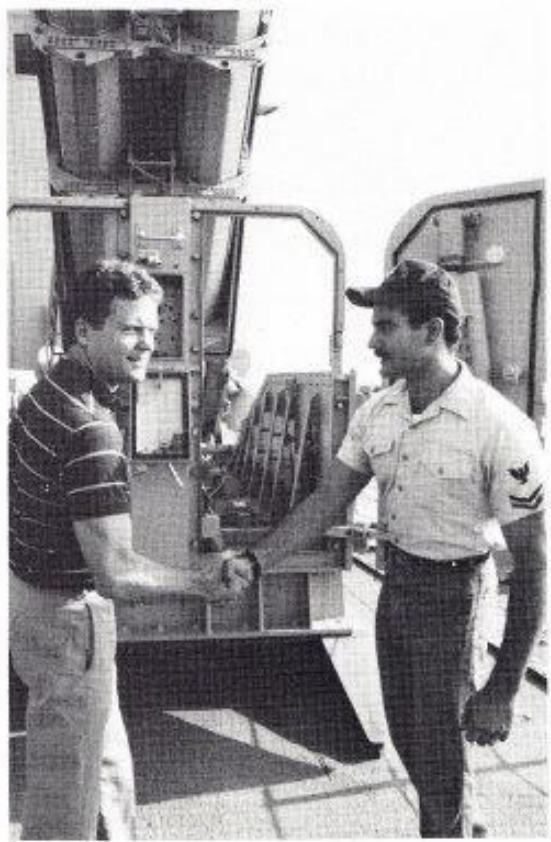
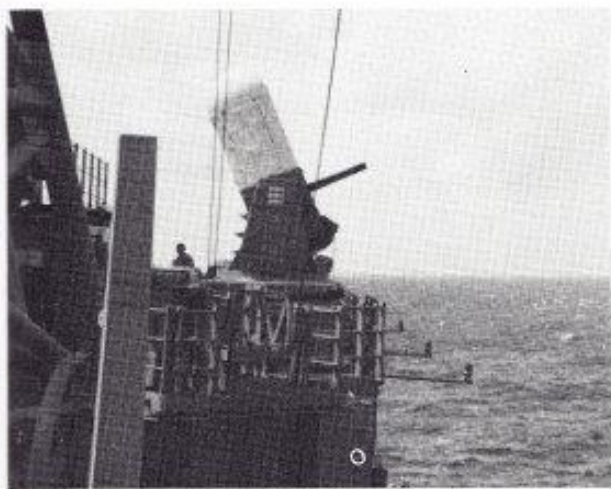
The Combat Systems Officer is responsible for the operational readiness of all the ship's combat systems equipment. He is charged with the readiness and maintenance of all radars, underwater surveillance equipment, and weapons systems. The department is composed of four divisions: Anti-Submarine Warfare-Gunnery (CG), ASW (CA), Missiles (CM), and Electronics (CE).

CG Division is manned by Gunner's Mates (GMG's) who maintain the 2-5" guns, and the various small arms carried aboard ship, MK 86 Gun Fire Control Technicians (FC's) who maintain the tracking radars and control systems for the 5" guns, and Close-In Weapons System (CIWS) Fire Control Technicians (FC's) who maintain the 2 CIWS mounts.

CA Division is manned by Sonar Technicians (STG's) who maintain the ASW sensors and equipment required to identify and track submarine contacts; ASROC Gunner's Mates (GMM's) who maintain the Anti-Submarine Rocket (ASROC) weapon system; and Torpedomen (TM's) who maintain the Torpedo Tubes.

CM Division is manned by Fire Control Technicians (FC's) who maintain the Tomahawk, Harpoon, and Seasparrow Missile systems.

CE Division is manned by Electronic Technicians (ET's) who maintain the radars, electronic communications, and test and support equipment; and Data Systems Technicians (DS's) who maintain the ship's computer systems.



C
G

D
I
V
I
S
I
O
N



L-R: GMG1 Lewis, GMG2 Casas, GMGSN Empey, GMG2 Mazzarella, GMG3 Koehler, GMG1 Kane, GMG3 Lee, GMG3 Schweers, GMC Kinard



L-R: FC1 Musters, FC2 Stevenson, FC3 Henke, FC2 Floe, FC3 White, FC3 Emery, FCSN Dalrymple



Front Row, L-R: FC3 Cook, FC2 Dumars Back Row, L-R: FC1 Steele, FC1 Lanfredi, FC1 VanNorman, FC2 Moorehouse



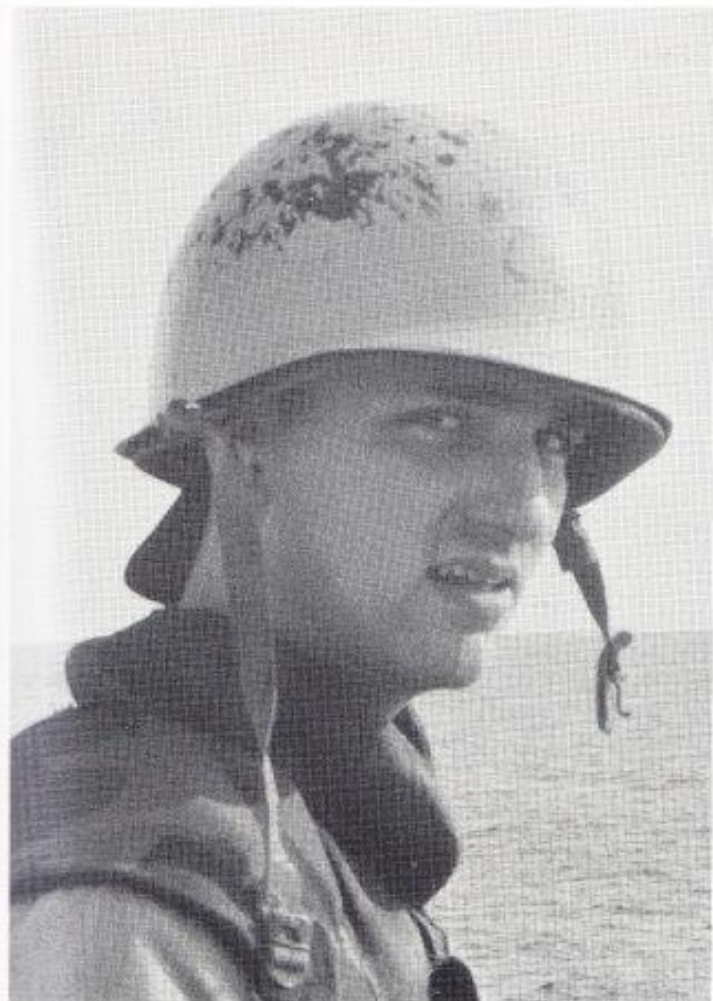
CA DIVISION



Front Row, L-R: STG3 Detone, STGSN Andreas, STG2 Dietrich, STG3 Pustulka, STG3 Raposa, TM3 Lobre Back Row, L-R: LTJG Alfaro, STG3 Duncan, TM2 Barker, STG3 Semachko, STG2 Koch, STG3 Stark, TM1 Clay, STGC Gates



Front Row, L-R: GMC Dutton, STG2 Dietrich, STGSN Andreas, TM1 Clay, STG2 Hazard, GMM2 Harrison, STG3 Raposa Middle Row, L-R: STG3 Pustulka, GMM2 Shaffer, GMM2 Hayeck, TM3 Lobre, TM2 Barker, STG2 Bishop, STG2 Chilton Back Row, L-R: STG2 Koch, STGC Gates



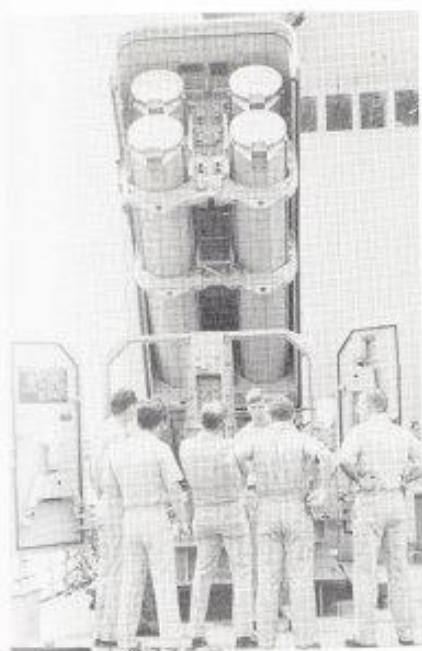
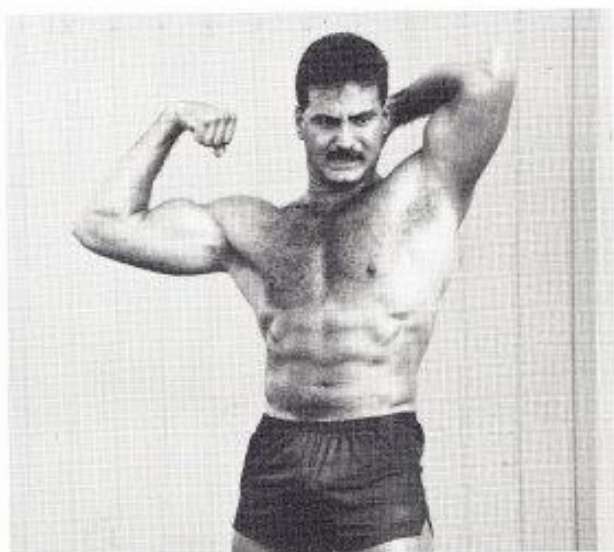


L-R: FCC Rhodes, FCSN Fladung, FC2 Trice, FC2 Onstott, FCSN Nystrom, FC2 Geiyer, FCCM Wooten

CM DIVISION



L-R: FC3 Nelson, FC2 Heffner, FC2 Stevenson, FC2 Evans, FC2 Mellick, FC2 Bitner, ENS Nickerson, FC2 Calantropio, FC2 Napier, FC3 Drew





Front Row, L-R: ETC Hatfield, ET3 Maupin, ET3 Lopiccicolo, ET2 Kircher, ET3 Danahy, ETC Doody Back Row, L-R: ET1 Morgan, ET2 Lewis, ET3 Little, ET2 Birzes, ETSN Ludwigsen, ET3 Barrett

CE DIVISION



Front Row, L-R: DS2 Magnani, DS2 Wolfgram, DS3 Hoskins Back Row, L-R: DS2 Cunningham, DS2 Birmingham, DS3 Krader, DS1 Stevens



ENGINEERING DEPARTMENT



Gas Turbine Systems Technician



Electrician's Mate



Interior Communications Technician



Engineman



Damage Controlman
Hull Technician



Machinery Repairman

LT JAMES L. O'KEEFE III, USN

The Engineering Officer is responsible for the operation and maintenance of all propulsion, electrical, mechanical and auxiliary systems, and maintaining damage control equipment. The department is composed of four divisions: Main Propulsion (MP), Repair (R), Electrical (E), and Auxiliaries (A).

MP Division is manned by Gas Turbine Systems Technicians-(GSM's) Mechanical and (GSE's) Electrical who are responsible for operating and maintaining the propulsion equipment and its control systems.

R Division is manned by Damage Controlmen (DC's) who maintain the various fire fighting and flooding equipment throughout the ship; Hull Technicians (HT's) who maintain and repair the ship's hull and fittings and fabricate, cut and weld to repair damage to the ship; and Machinery Repairmen (MR's) who manufacture from stock various components of the ship's machinery.

E Division is manned by Electrician's Mates (EM's) who are responsible for providing electrical power throughout the ship; and Interior Communications Technicians (IC's) who are responsible for maintaining the ship's gyro compass, alarm systems, and interior communications.

A Division is manned by Engineman (EN's) who maintain the auxiliary equipment required for refrigeration, air conditioning, and high and low pressure air throughout the ship.



SNIPES STORY



HEAVEN DON'T WANT
US. HELL'S AFRAID
WE'LL TAKE OVER



Front Row, L-R: FN Payne, GSMC McGhee, GSMFA Brown
 Back Row, L-R: FN Boren, GSM2 Apicello, GSM3 Martin, FN Rother, GSMFN Hinshaw, GSM1 Russell, GSM3 Nordberg, LT Waring



Front Row, L-R: FN Kennedy, FN Gist, GSM3 Carmona,
 FN Gonyea, ENS Foret
 Back Row, L-R: GSM2 Metz, GSM1 Avenenti, GSM2 Foran, FN Pantaleo, GSMFN Herubin

MP

DIVISION

Front Row, L-R: GSM3 Milakovich, GSMC McGhee, FN Luhrs, FN Gordon
 Back Row, L-R: GSM2 Raybuck, GSM3 Schroff, GSM3 Hess, GSM2 Mueller, GSM2 Anderson



Front Row, L-R: GSE2 Delparte, GSE2 Jackson, GSEC Parsons, FN Bergeron
 Back Row, L-R: FN McCoy, GSE2 Bogнар, GSE2 Burke, GSE1 Barnes, GSE2 Pikini, GSE2 Laporte, FN McKenzie

Front Row, L-R: FN Payne, GSMC McGhee, GSMFA Brown Back Row, L-R: FN Boren, GSM2 Apicello, GSM3 Martin, FN Rother, GSMFN Hinshaw, GSM1 Russell, GSM3 Nordberg, LT Waring



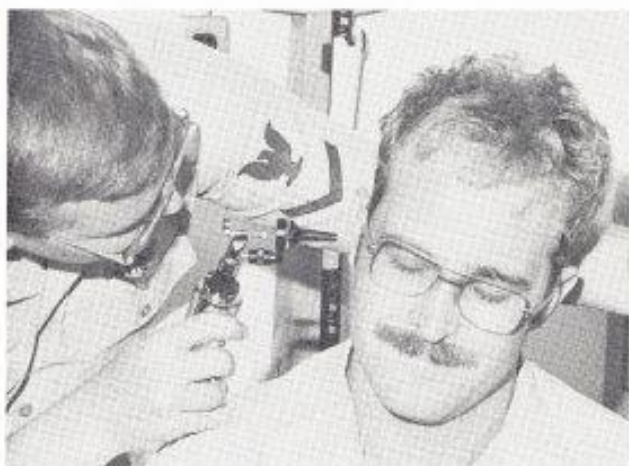
Front Row, L-R: FN Kennedy, FN Gist, GSM3 Carmona, FN Gonyea, ENS Foret Back Row, L-R: GSM2 Metz, GSM1 Avenenti, GSM2 Foran, FN Pantaleo, GSMFN Herubin

MP

Front Row, L-R: GSM3 Milakovich, GSMC McGhee, FN Luhrs, FN Gordon Back Row, L-R: GSM2 Raybuck, GSM3 Schroff, GSM3 Hess, GSM2 Mueller, GSM2 Anderson



Front Row, L-R: GSE2 Delparte, GSE2 Jackson, GSEC Parsons, FN Bergeron Back Row, L-R: FN McCoy, GSE2 Bogнар, GSE2 Burke, GSE1 Barnes, GSE2 Pikini, GSE2 Laporte, FN McKenzie

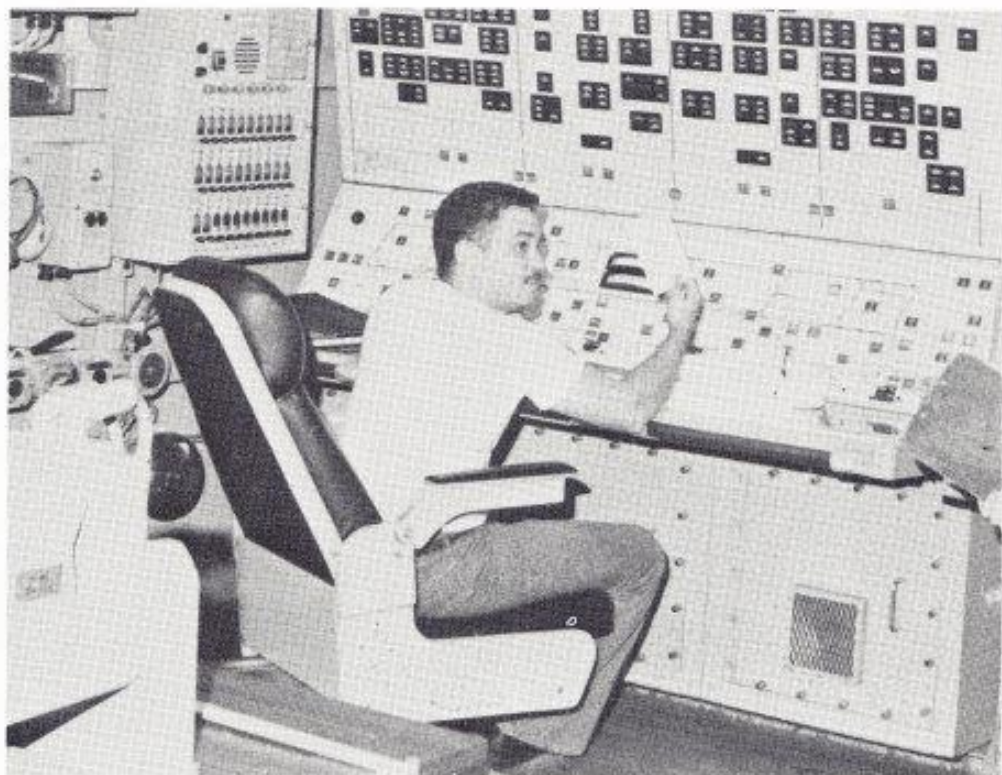




Front Row, L-R: FN Davis, DC3 Sparks, DC2 Smith, FN VanBever, DC2 Marable, HT2 Davis, DC2 Dunn, DC3 Mitchell Back Row, L-R: DCC Mitchell, DC2 Franceschina, HTFN Cox, HT2 Boyle, HT2 Zortman, MR1 Patten, DC1 Scherer, LTJG Brown

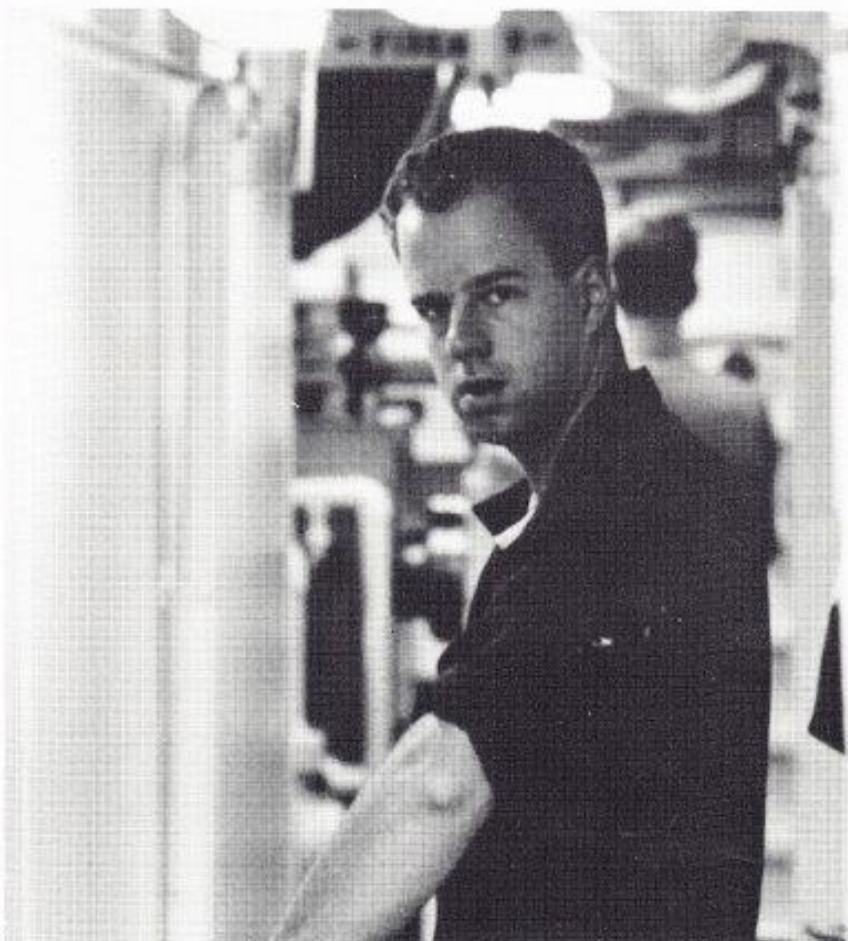
R DIVISION

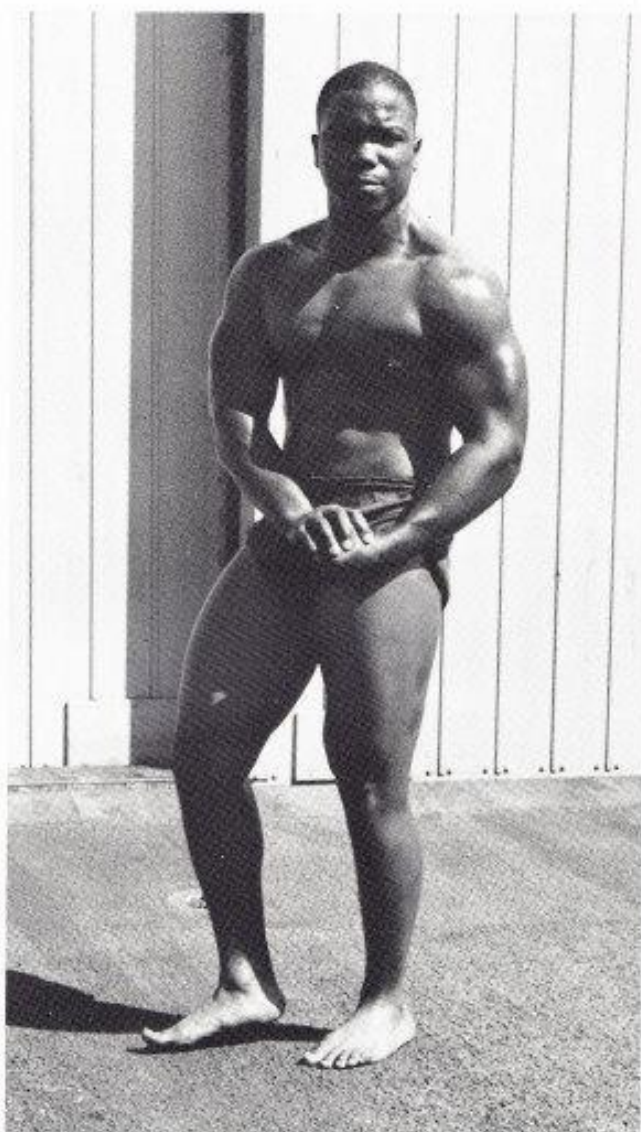






Front Row, L-R: FN Craig, IC2 Brown Back Row, L-R: IC2 Cravens, ICC Stephenson, EM3 Coquia, IC3 Grundon, IC3 Pryor, EM1 Fajota, FR Collazo, EM3 Grubis, EM2 Tobita, EM2 Daily, IC3 Berry, IC2 Taylor, ENS Keutel, EMC Domingo





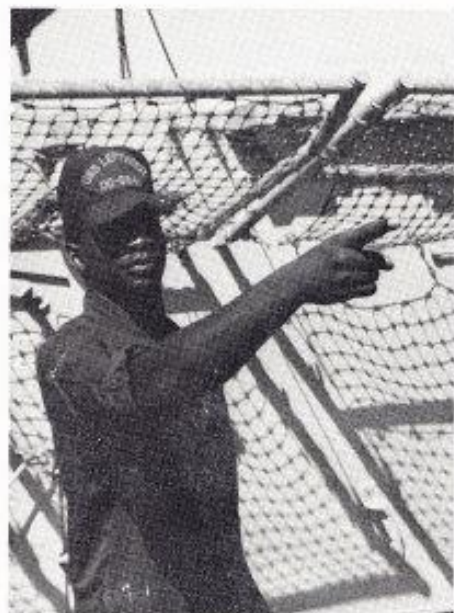


Front Row, L-R: EN3 Williams, EN3 Torgerson, ENFN James, ENFN Mosley, EN3 Sandoval Back Row, L-R: EN3 Miller, EN2 Wagner, EN2 George, EN2 Keener

A GANG



Front Row, L-R: EN2 Spaulding, ENFN Brown, EN3 Wilcox, EN3 Murnan Back Row, L-R: EN2 Luciani, EN3 Moore, EN2 Iten, ENFN Snow, ENS Cooper



AIR DEPARTMENT



Aviation Machinist's Mate



Aviation Electrician's Mate



Aviation Structural Mechanic



Aviation Electronics Technician



Aviation ASW Operator



Aviation ASW Technician



Aviation Maintenance Administrationman

LT JAY BUTLER, USN

The Air Department Officer is responsible for the maintenance and operation of the helicopters and equipment embarked onboard. LEFTWICH is the first Spruance Class Destroyer to deploy with a two helicopter detachment. In order to fulfill its mission additional pilots and maintenance crewmen were embarked.

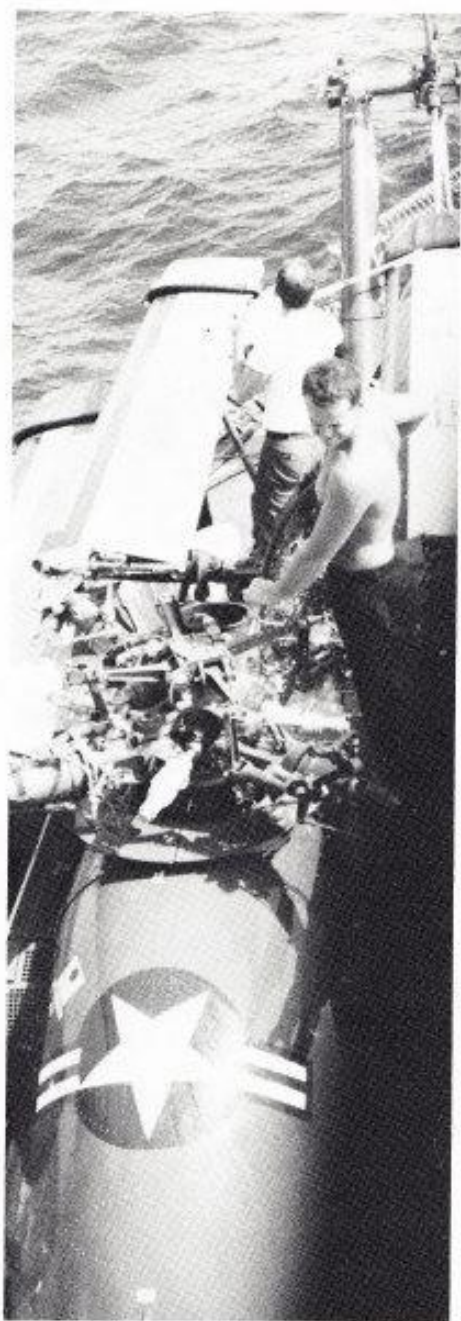
The Air Department is manned as follows: Pilots who operate the helicopters; Aviation Machinist's Mates (AD's) who maintain, service, adjust, and perform the duties of flight engineers; Aviation Electrician's Mates (AE's) who maintain, adjust, and repair aircraft electrical power generating and converting systems, lighting, and control and indicating systems; Aviation Structural Mechanics (AM's) who maintain and repair aircraft parts (wings, fuselage, tail, control surfaces, landing gear, and attending mechanisms); Aviation Electronics Technician (AT's) who test, maintain, and repair radio, radar, navigation, and other electronic equipment; Aviation Anti-Submarine Warfare (ASW) Operator (AW's) who operate airborne radar and electronic equipment used in detecting, locating, and tracking submarines; Aviation ASW Technician (AX's) who inspect and maintain ASW systems and equipment; and Aviation Maintenance Administration men (AZ's) who plan, schedule, and coordinate the maintenance workload, including inspection and modifications to aircraft and equipment.





Front Row, L-R: LT Haupt, LT Butler, LTJG Schueffele, LTJG McNear, LT Hunter Middle Row, L-R: LT Carroll, AW3 Roesler, AT2 Swaney, AE2 Temple, AD1 Wiuff, AD2 Delmendo, AMS1 Graham, AEC Konopacek, AW3 Sanborn, AW2 Vasquez Back Row, L-R: AZ2 Foster, AE2 Hicks, AX1 Jones, AMH2 Riese, AN Marx, AE2 Borgmeyer, AD2 Gray





SUPPLY DEPARTMENT



Disbursing Clerk



Mess Management Specialist



Ship's Serviceman

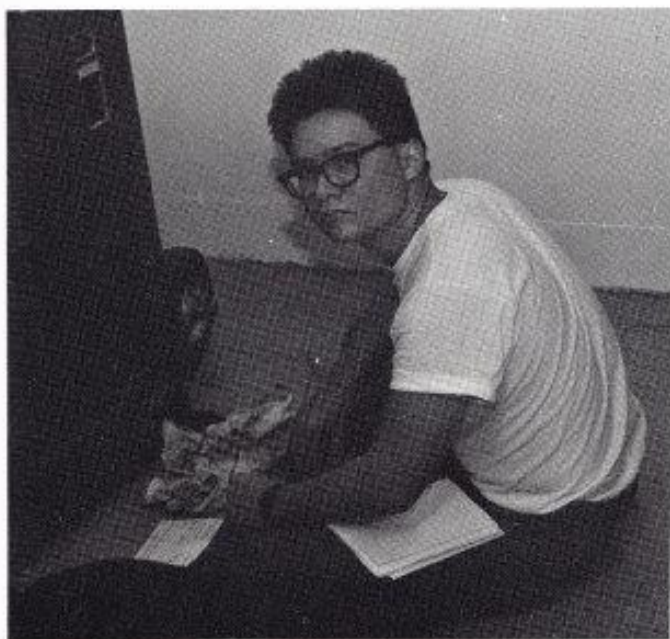
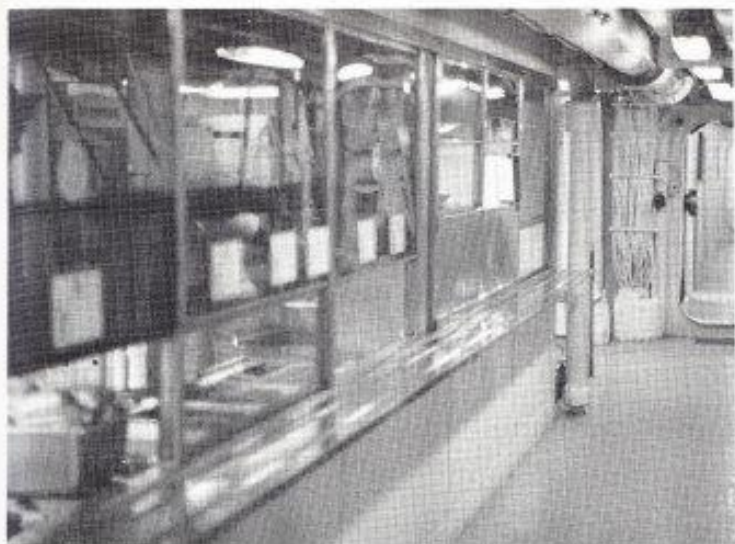


Storekeeper

LT WILLIAM A. BROWN, USN

The Supply Officer is responsible for the procurement of all ship's supplies. This includes all spare parts as well as food, linen, and cleaning supplies. He is also responsible for the operation of the ship's food, laundry, barber, vending, and store services.

The Supply Department is manned as follows: Disbursing Clerks (DK's) who oversee the payment of the crew; Mess Management Specialists (MS's) who handle the procurement, receipt, storage, and preparation of all the food for the crew; Ship's Servicemen (SH's) who provide barber and laundry services, and operate the ship's store and vending machines; and Storekeepers (SK's) who procure, store, and handle spare parts and consumable items.





Front Row, L-R: SH1 Vito, SHSN Cawthorne, DK1 Salazar, DKSN Loverin Back Row, L-R: SHSN Remolano, SH3 Jones, SH2 Libowski, SH2 Fleming, ENS Burpeau



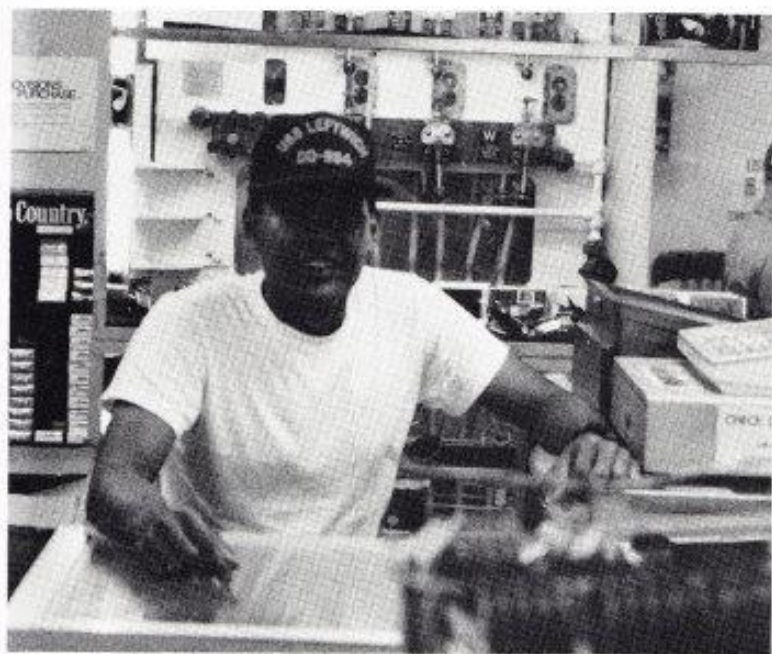
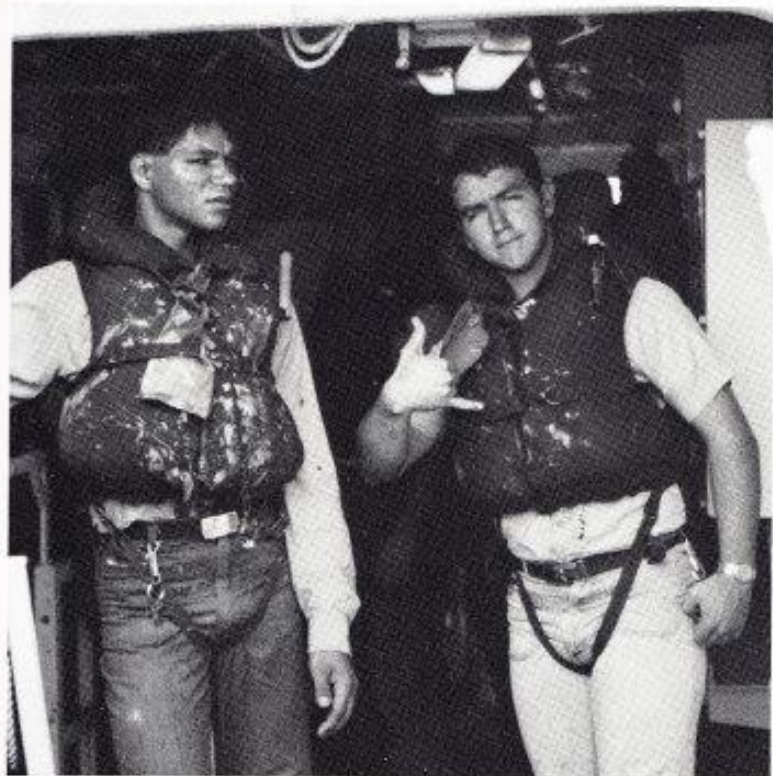
Front Row, L-R: MSSN Adamos, MS2 Cayabyab, MS3 Martinez, MSSN Hicks, MSSN Jones Back Row, L-R: MS3 Parsons, MS1 Malec, MS2 Baker, MS2 Moyle, MSC Navarro



L-R: MS2 Stegmaier, MS3 Clements



Front Row, L-R: SK2 Galope, SKC Mercado, SK3 Cook Back Row, L-R: SK2 Kavanaugh, SK2 Williams, SK1 Tilghman



**S
U
P
P
L
Y**



NAVIGATION/ADMIN DEPARTMENT



Quartermaster



Yeoman



Personnelman



Hospital Corpsman



Postal Clerk

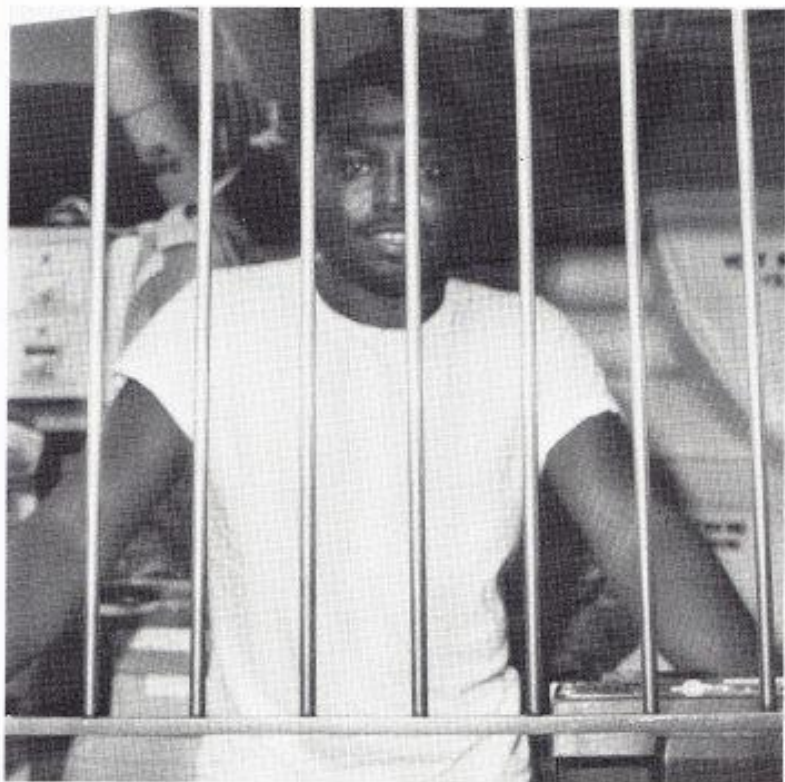


Master-at-Arms

LT JOSEPH S. HUEY, USN

The Navigator is responsible for the safe navigation and piloting of the ship. He advises the Commanding Officer and Officer of the Deck of the ship's position; and if the ship is running into danger, the safe course to be steered. As the Administrative Officer, he acts as principal assistant to the Executive Officer in implementing the ship's administrative programs.

The Navigation/Administration Department is manned as follows: Quartermasters (QM's) who assist in the safe navigation of the ship; Yeomen (YN's) who provide administrative and clerical support for the crew; Personnelmen (PN'a) who provide personnel accounting of the crew; Hospital Corpsman (HM's) who handle the medical needs of the crew; Postal Clerks (PC's) who operate the ship's post office; and Master-at-Arms (MA) who ensures ship's security and safety.





L-R: QMSN Mengarelli, QM2 Farthing, QMSN Joliff, QMSN Scull, QM3 Milroy, QM2 Moore



L-R: YN1 Case, PCSN Utsey



L-R: HM3 DAVIS, HMC Murphy, HMC Cajudo, LT McCarthy, HM2 Heath



L-R: PN2 Coffman, YNSN Renfrow, PNSA Piatt, YNSR Ciak, PN1 Jacobs, YNSN Wojtechowski, YNSA Knight



Lt Michael J. Collins, USN



DESRON 35 STAFF



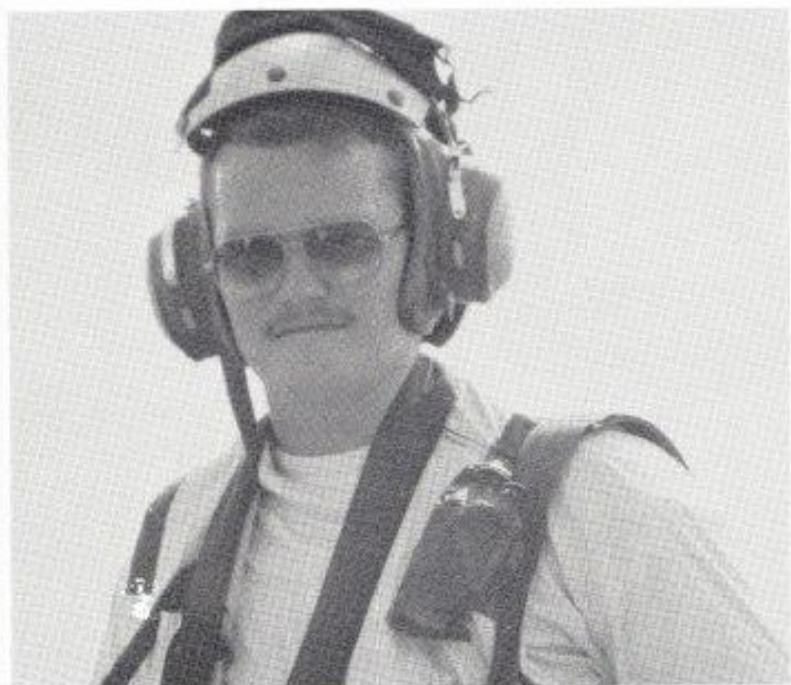
Front Row, L-R: OSSN Morgan, CDR Spencer, YN1 Riojas, ISC Evans, LT Phillips Back Row, L-R: LT Gray, OS2 Dingee, LT Dodson, LT Adamo, OSCS Shelp, RMCS Homan







QUARTERS

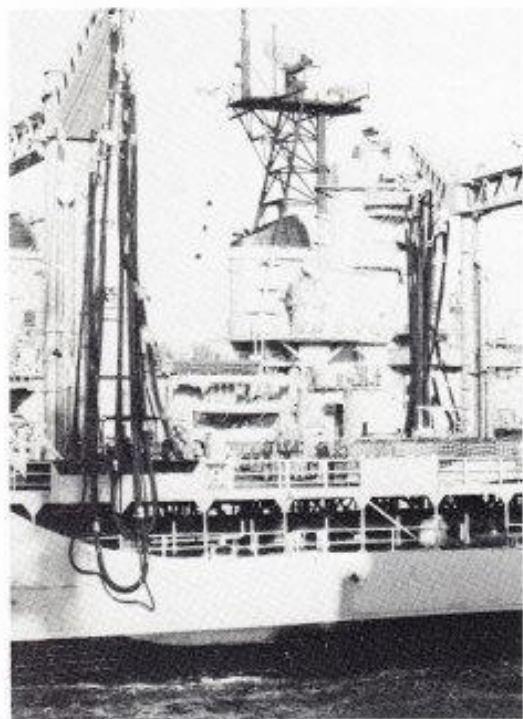




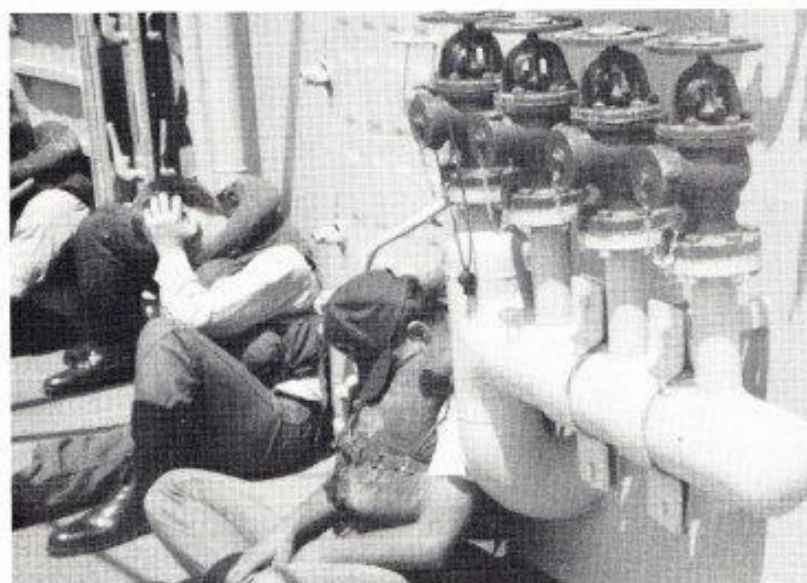
REPLENISHMENT

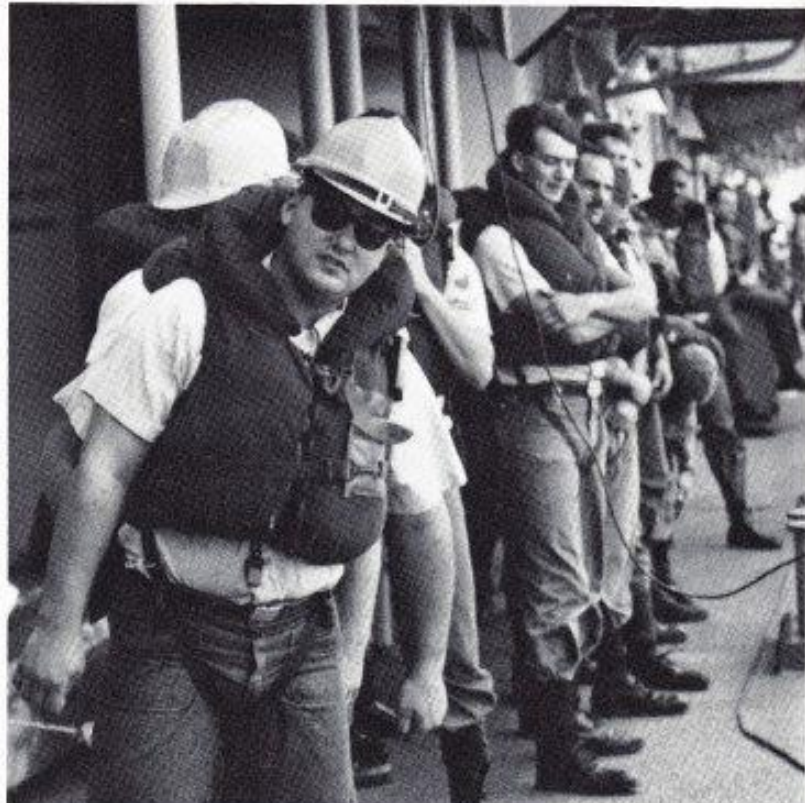


UNDERWAY



REPLENISHMENT

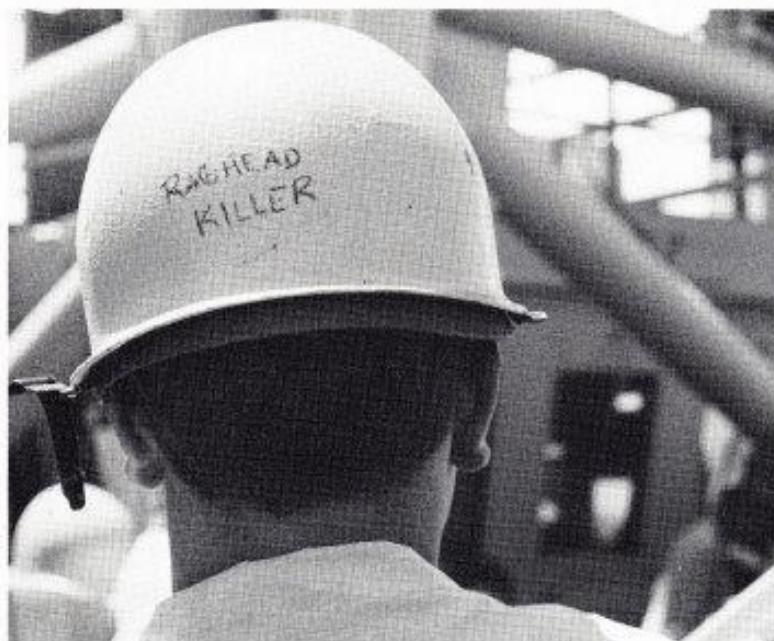




UNREP WITH USS INFLICT



SELF DEFENSE

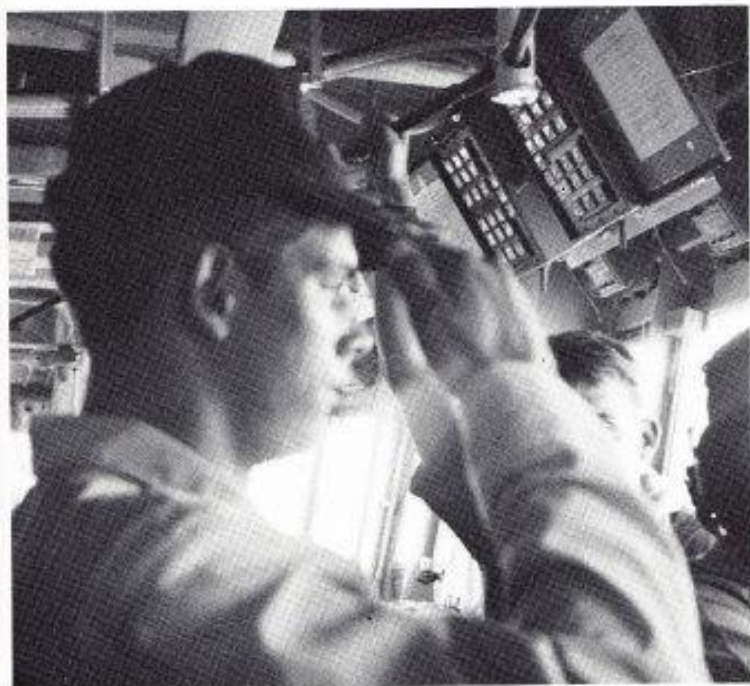


FORCE





THE BRIDGE







We are the crew of the USS LEFTWICH (DD 984)
From the Captain to the most junior Seaman Recruit
Setting out on our first "WESTPAC" since the end of overhaul
Embarked for our journey is COMDESRON 35 and his Staff
As is the Air Det of HSL 37

We are the crew of the USS LEFTWICH (DD 984)

This "WESTPAC" unlike most, had a mission

It's mission was one of serious nature

Yet, each man has been trained to do a job

Not only perform a task, but to perform it well

We are the crew of the USS LEFTWICH (DD 984)

Each man had his ideas of what a "WESTPAC" was all about

Some dreamed of foreign ports and beautiful women

Others thought about the return home and future plans

However, others dealt with insecurities and anticipation

WE are the crew of the USS LEFTWICH (DD 984)

One good thing about a "WESTPAC", they come to an end

All of us looking forward to pulling back into our homeport

Pearl Harbor, Hawaii

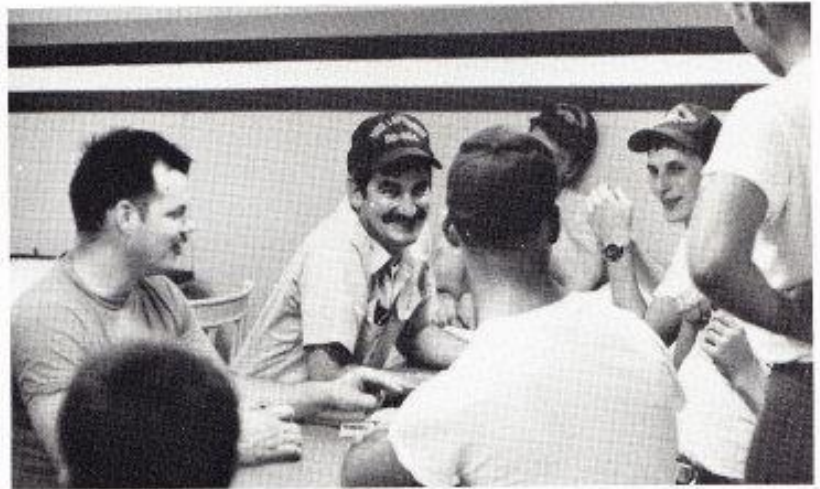
Shine she must, run she will

For we are the crew of the USS LEFTWICH (DD 984)

By

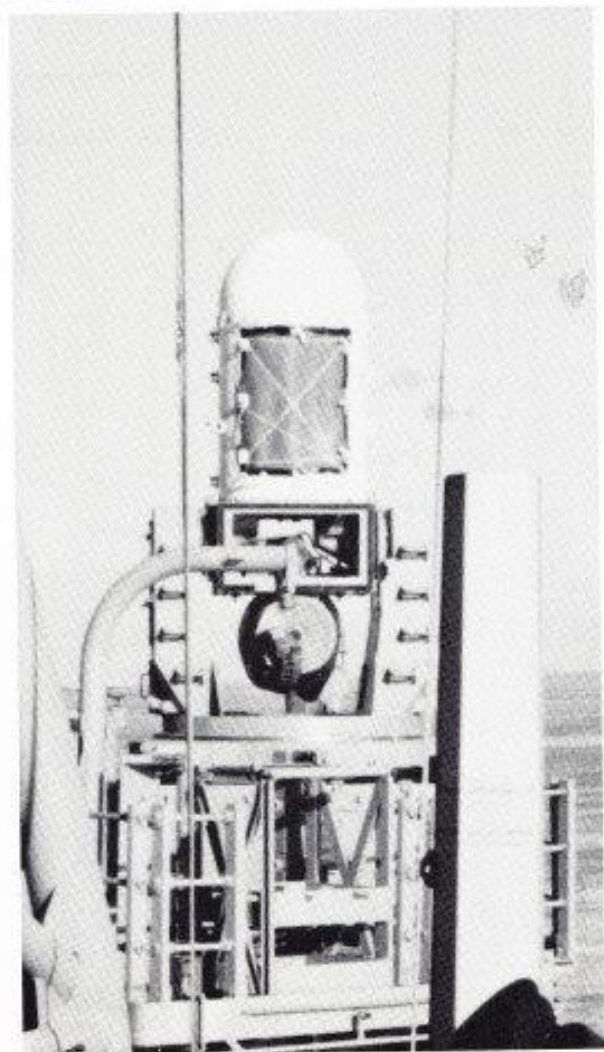
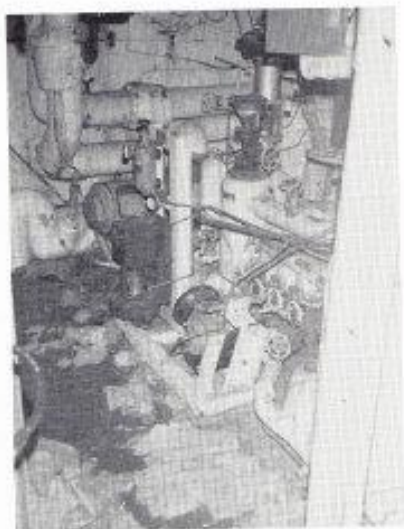
R.L. Heath

HM2 USN





OOPS!



BIRTHDAYS



USS LEFTWICH's 8th Birthday 25 August 1987



United States Navy's 212th Birthday 13 October 1987

United States Constitution's Bicentennial Celebration 17 September 1987

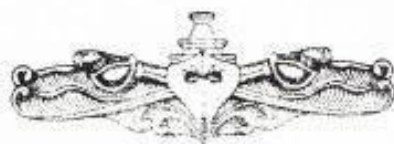
SURFACE WARFARE OFFICER



LT Pat Cooley
LT Steve Matlock
ENS Martin Keutel
ENS James Brown
ENS Robert Goodwin
ENS Brian Nickerson

16 Oct
24 Oct
27 Oct
27 Nov
09 Jan
09 Jan

ENLISTED SURFACE WARFARE SPECIALIST

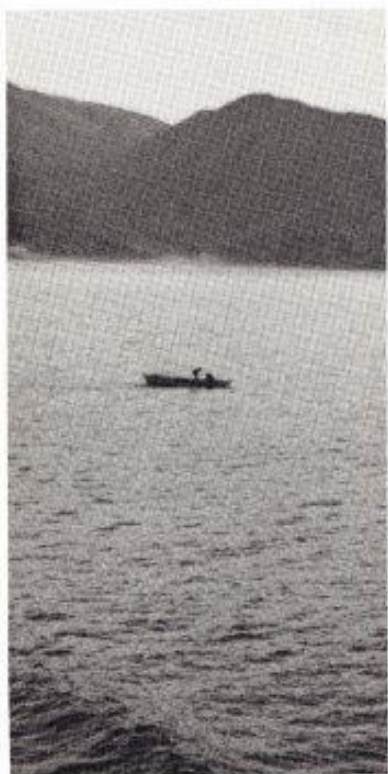


OS1 Michael Martin
EN2 Brian Luciani
EWC Ralph Couch
SM1 Gary Jones
ET2 Keith Krug
FC1 Rory Steele
GSEC Daniel Parsons
GMC Leneave Kinard
GSMC Douglas McGhee
BMC Howard Tanksley
FC2 Chris Cox
MR1 Patrick Patten
FC2 Daniel Melick
STGC John Gates
EW3 Kevin Everett
GMG2 Steven Mazzarella
ETC John Doody
YN1 Gerardo Riojas
RMCS John Homan
IC2 Billy Cravena
DC2 Michael Franceschina
MAC Dwight George
GSM1 Ralph Avenenti
DC1 David Scherer
SK1 James Tilghman
RM1 William Huot
GSE2 Paul Pikini
GMG1 Barry Kane
FC2 Charles White
FC1 Earl Van Norman
EN2 Roger Keener
IC3 Greggory Grundon

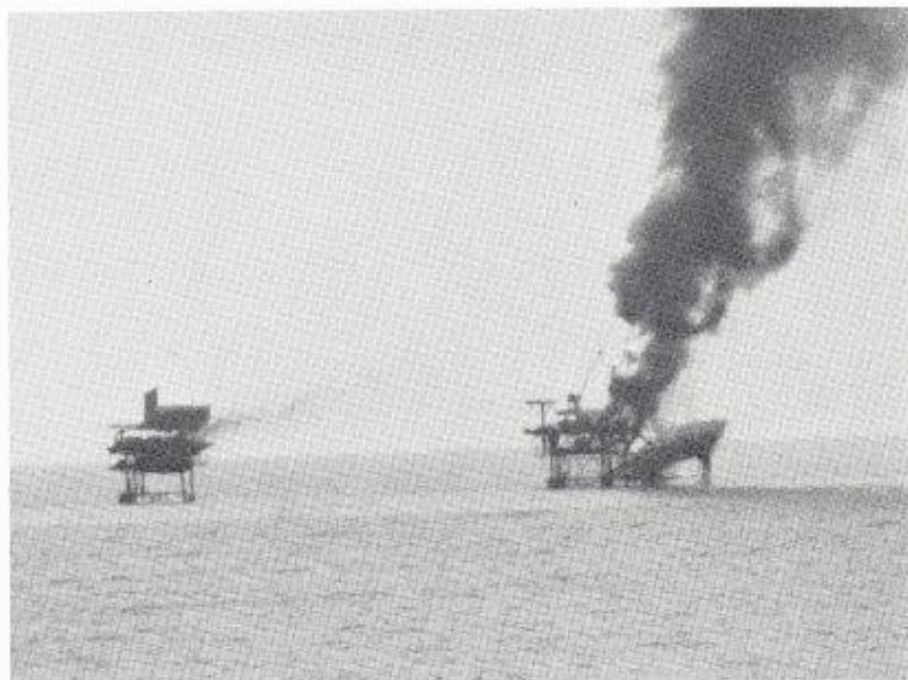
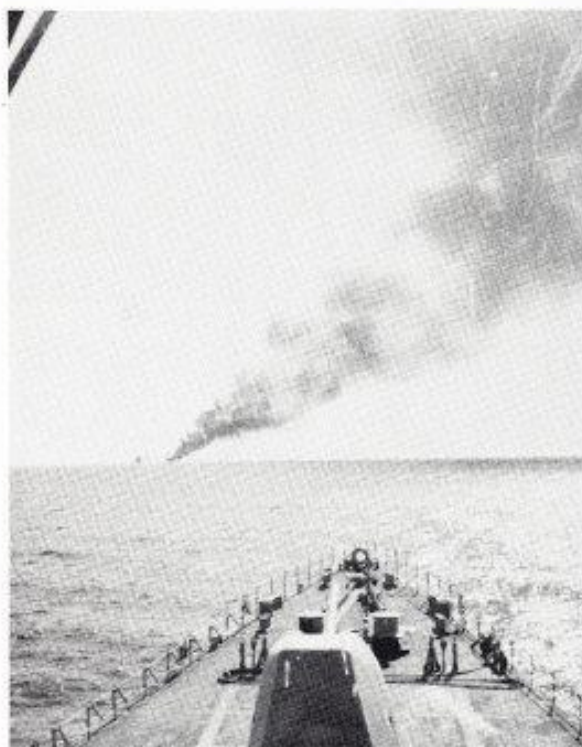
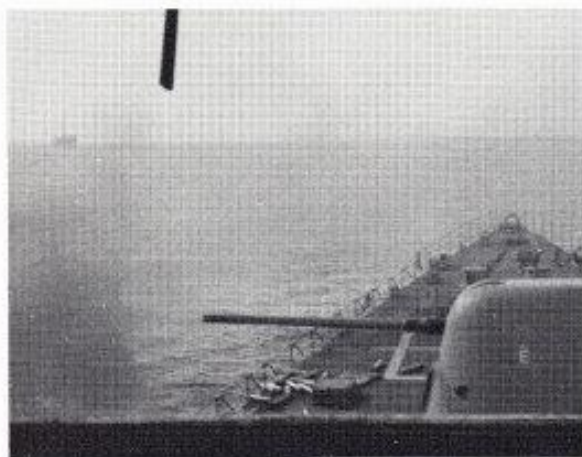
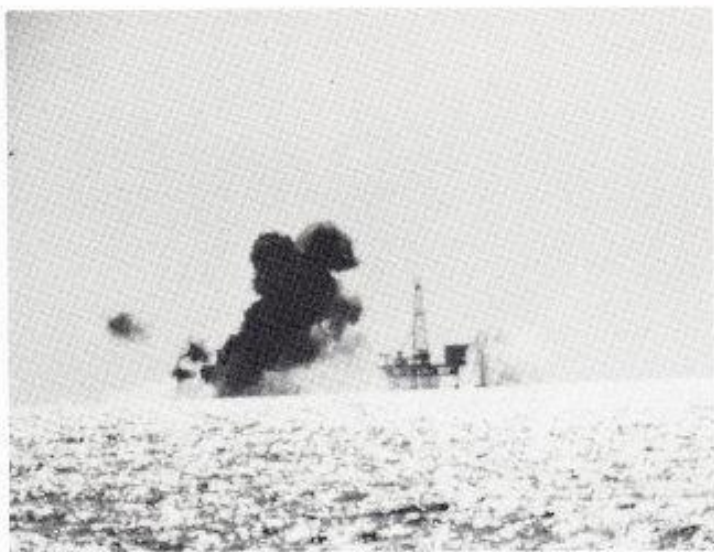
12 Aug
12 Aug
04 Sep
04 Sep
09 Sep
09 Sep
17 Sep
17 Sep
21 Sep
21 Sep
21 Sep
24 Sep
09 Oct
26 Oct
30 Oct
30 Oct
07 Nov
07 Nov
08 Nov
08 Nov
07 Dec
07 Dec
08 Dec
08 Dec
22 Dec
22 Dec
06 Jan
06 Jan
06 Jan
09 Jan
09 Jan
11 Jan



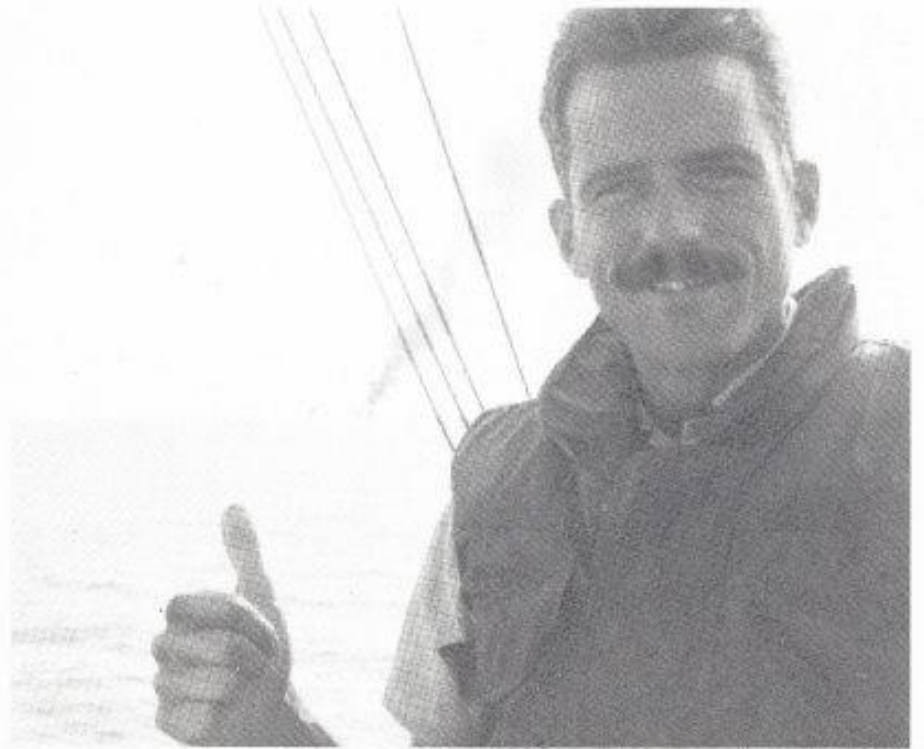
SUBIC BAY



REPUBLIC OF THE PHILIPPINES



MONDAY 19 OCTOBER 1987



RASHADAT OIL PLATFORM



THE WHITE HOUSE

WASHINGTON

November 17, 1987

Dear Captain Larguier:

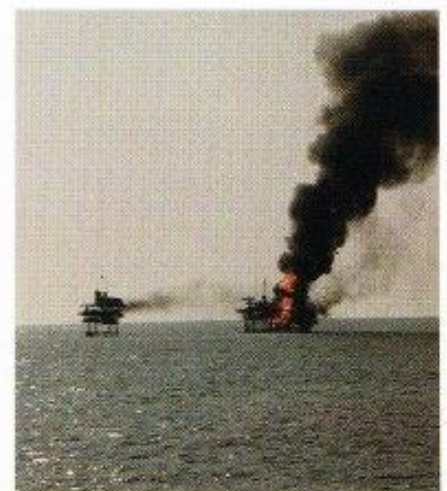
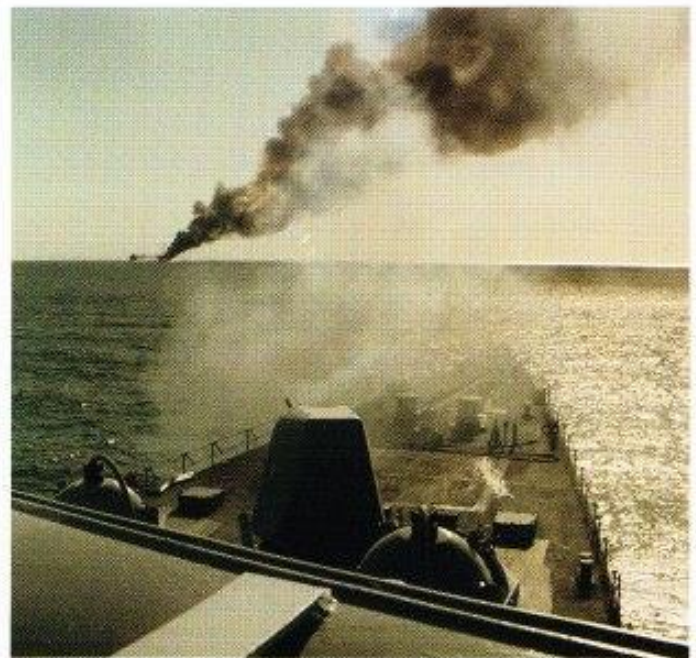
I would like to convey my hearty congratulations and profound admiration for the highly professional manner in which the ships and men under your command executed NIMBLE ARCHER on October 19. The esprit, elan and consummate expertise exhibited during this critical operation--as well as in other operations in support of vital U.S. interests in the Gulf--are a source of great pride for all Americans. Your command's steady, resourceful execution of a difficult mission continues to serve as an important signal of U.S. resolve and commitment to our regional friends, as well as our adversaries. As your Commander-in-Chief, I salute you and the fine men under your able command.

Please pass on my enthusiastic praise to all of them. BRAVO ZULU!

Sincerely,

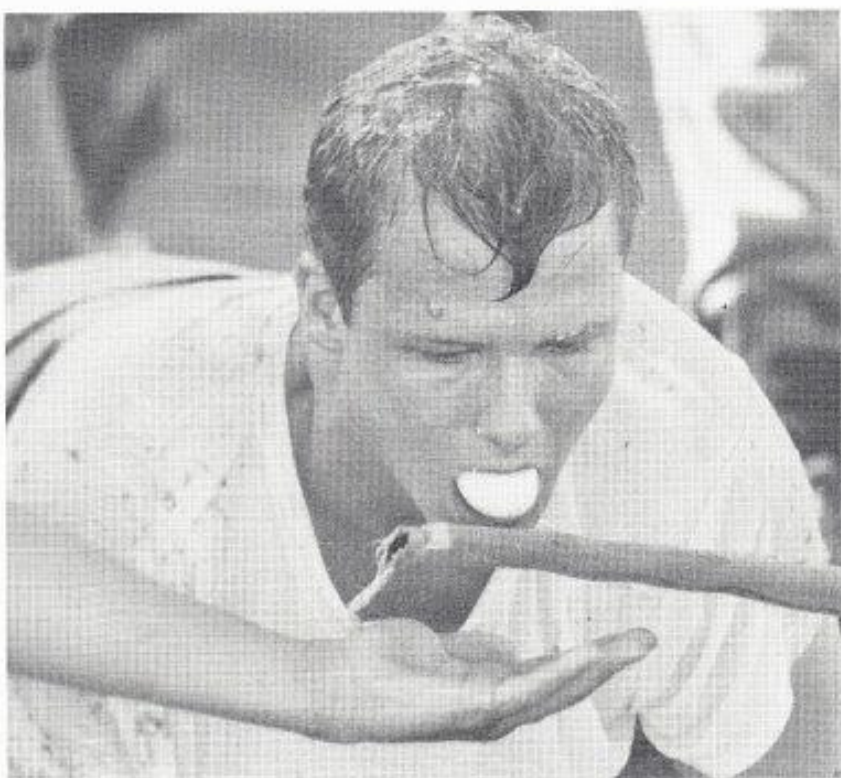
Ronald Reagan

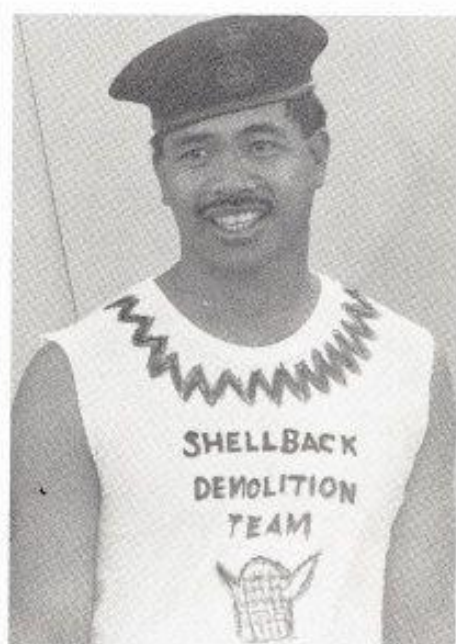
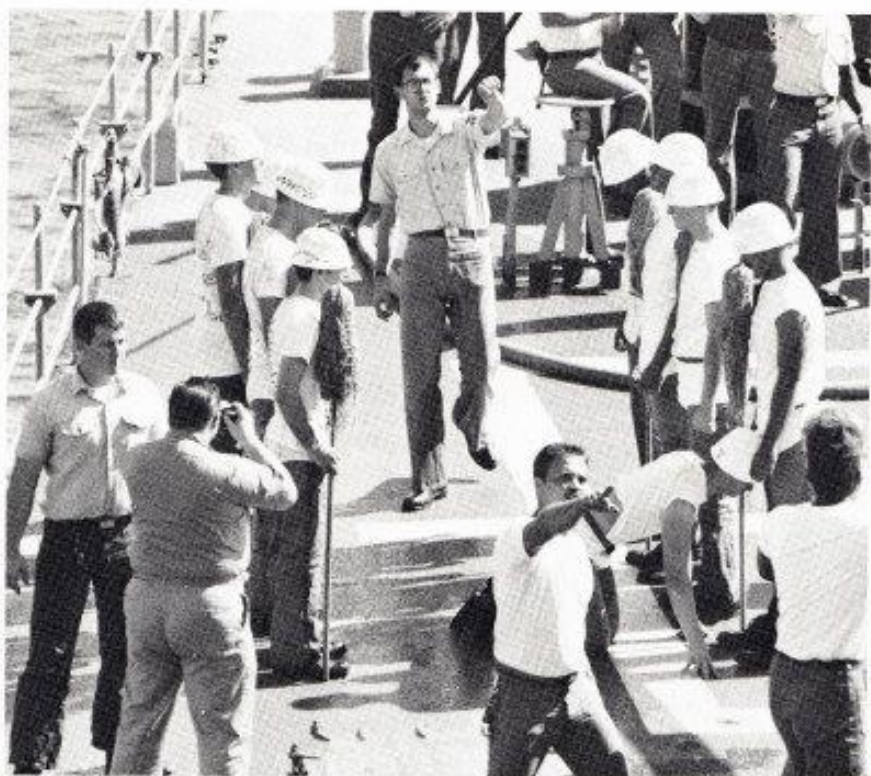
Captain Isidore Larguier, Jr., USN
Commander, Destroyer Squadron 35
APO San Francisco 96601 - 4729



OPERATION NIMBLE ARCHER

CROSSING THE LINE

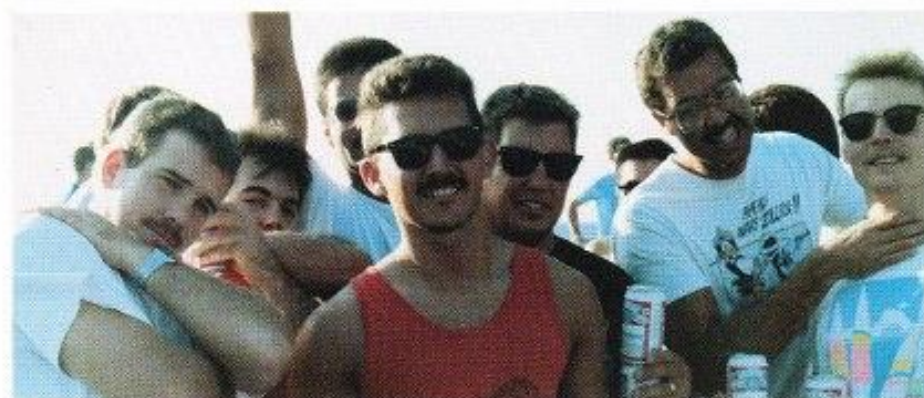
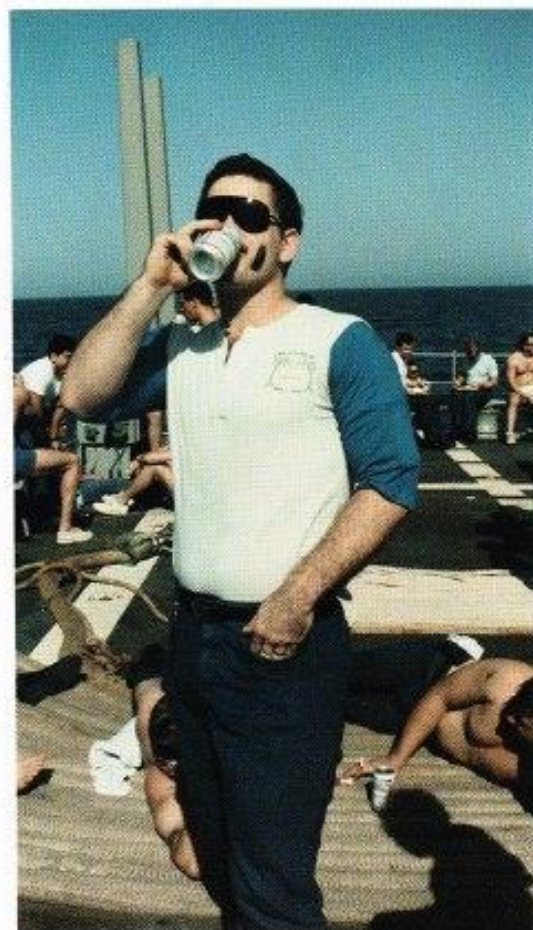
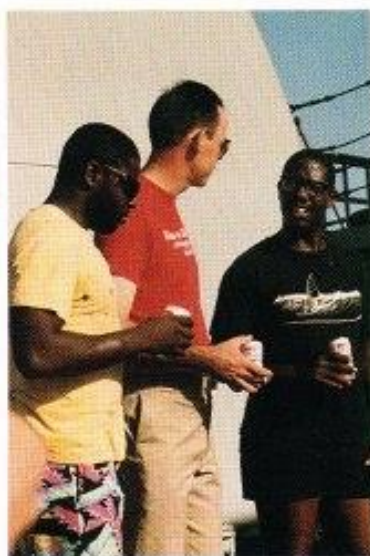
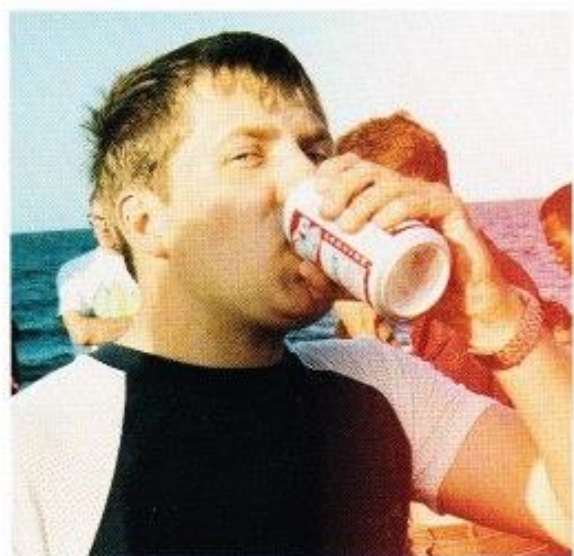
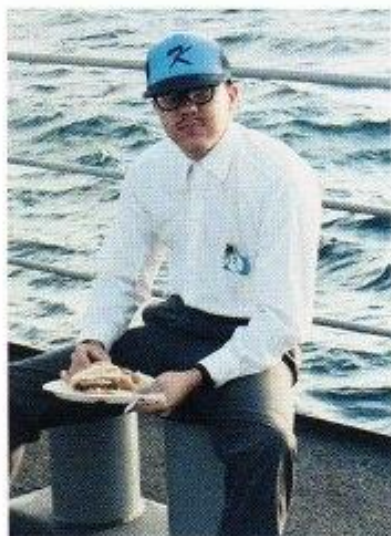




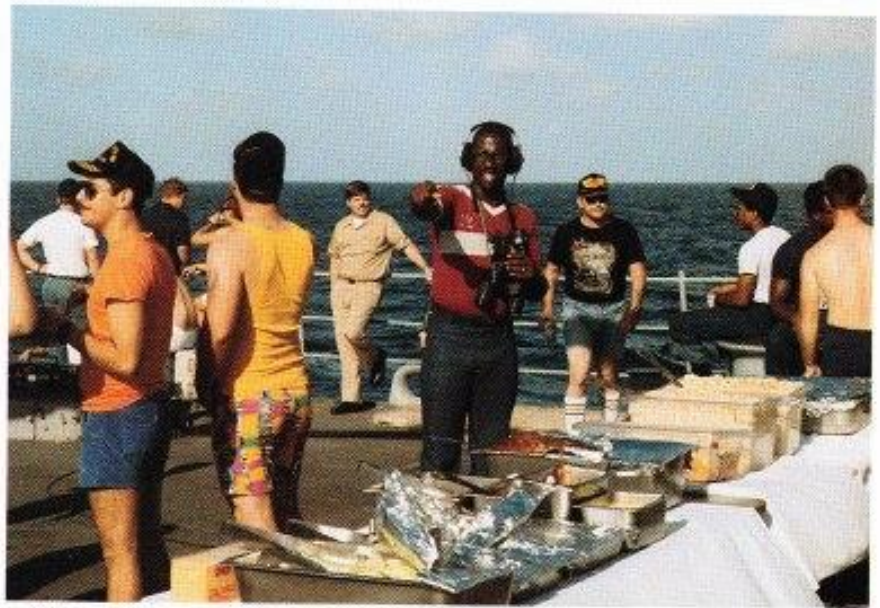
On 28 November 1987, LEFTWICH crossed the equator. Historically, Neptune, the mythological god of the seas, was appeased by the seaman, and marks of respect were paid those of his under-water domain. It is plausible that a part of the present ceremony grew out of the superstitions of those days, even though Viking sailors had come to doubt the physical existence of Neptune. Nevertheless, Neptunus Rex is today the "Majesty" who rules in the ceremonies. Those who have crossed the line are called Sons of Neptune or "Shellbacks". Bona fide Sons of Neptune always compose the cast for present-day ceremonies. Our sailors will treasure their Neptune certificates issued "in Latitude 00-00 and Longitude 068-57.3E," addressed to "all Mermaids, Sea Serpents, Whales, Sharks, Porpoises, Dolphins, Skates, Eels, Suckers, Lobsters, Crabs, Pollywogs and other living things of the sea, ..." and stating that he "has been found worthy to be numbered as one of our trusty Shellbacks, has been gathered to our fold and duly initiated into the solemn mysteries of the ancient order of the deep."

BEER DAY

The U. S. Navy is one of the few "dry" navies in the world in which drinking alcohol is not authorized. However, ships on deployment spending over 45 days at sea without an anticipated port visit in the next 5 days are authorized to serve each man 2 cans of beer on what is called "beer day." LEFTWICH spent over 100 straight days underway while on deployment in the North Arabian Sea and as a result, received two beer days. On 4 October and on 15 November, we celebrated Oktoberfest with both "beer day" and a fantail cookout.



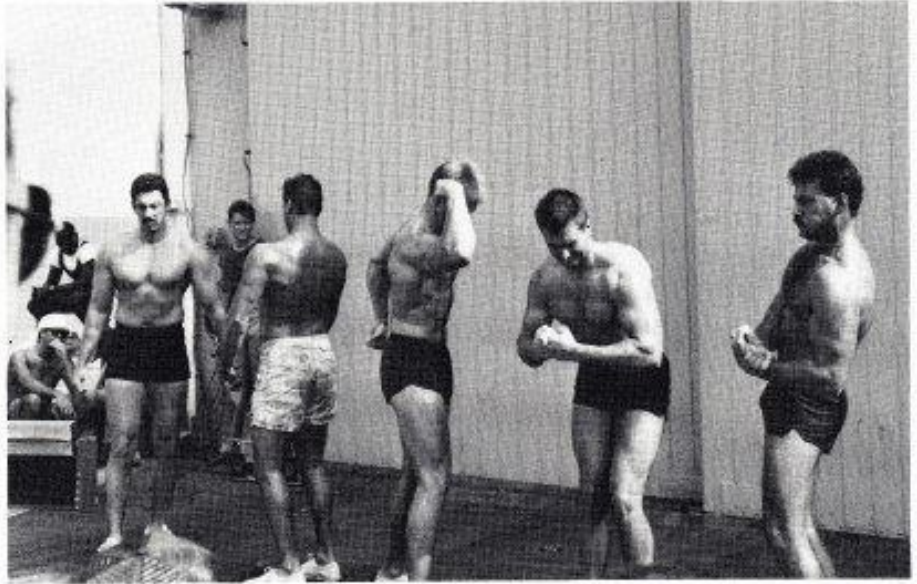
FANTAIL COOKOUTS



TALENT SHOW AND



Music Winners



On 29 November, we held a Talent Show and a Mr. LEFTWICH Body Building competition. The categories and winners for the talent show were Overall-FC3 Brian Cook who told humorous short stories, Music-BM2 William Carlson and IC3 Greg Grundon, Comedy-GSMFN Ricky Brown and OS3 Gary Lesiege, and Miscellaneous-STGSN Peter Andreas with impersonations. Five contestants entered each division of the Mr. LEFTWICH competition. The categories and winners were Overall-GMM3 Casey Connor, Heavy Weight-FC3 Keith Henke, and Light Weight-FC2 Daniel Helick, Jr.



Comedy Winner



Mr. LEFTWICH

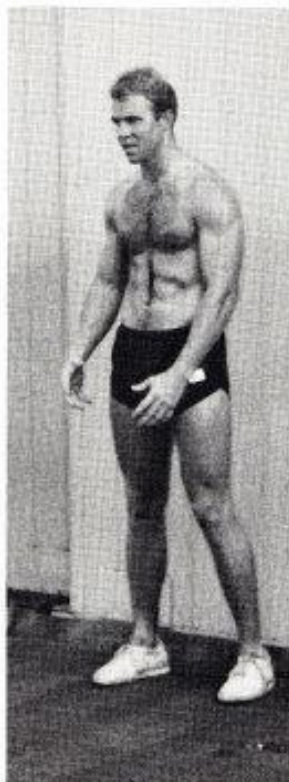
MR. LEFTWICH COMPETITION



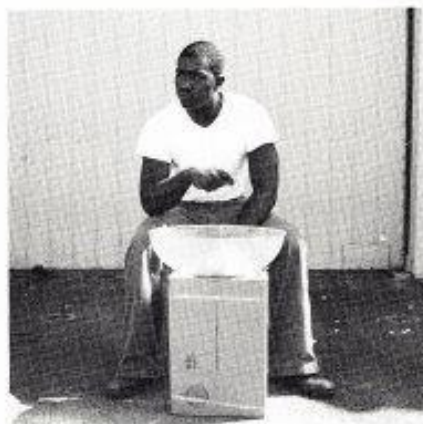
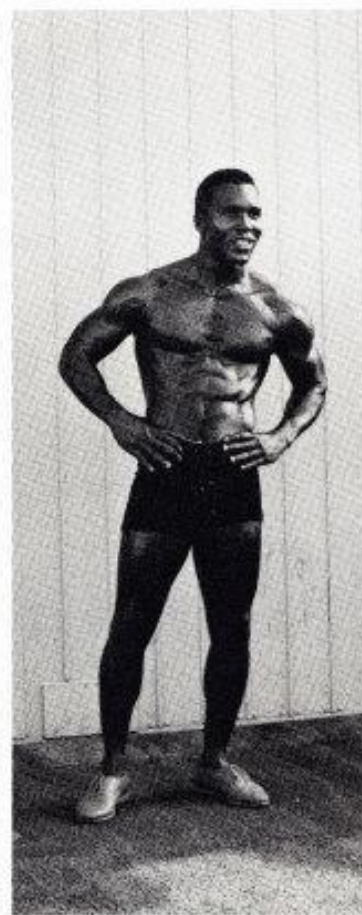
Overall Talent Winner



Impersonations



Heavy Weight Division Winner



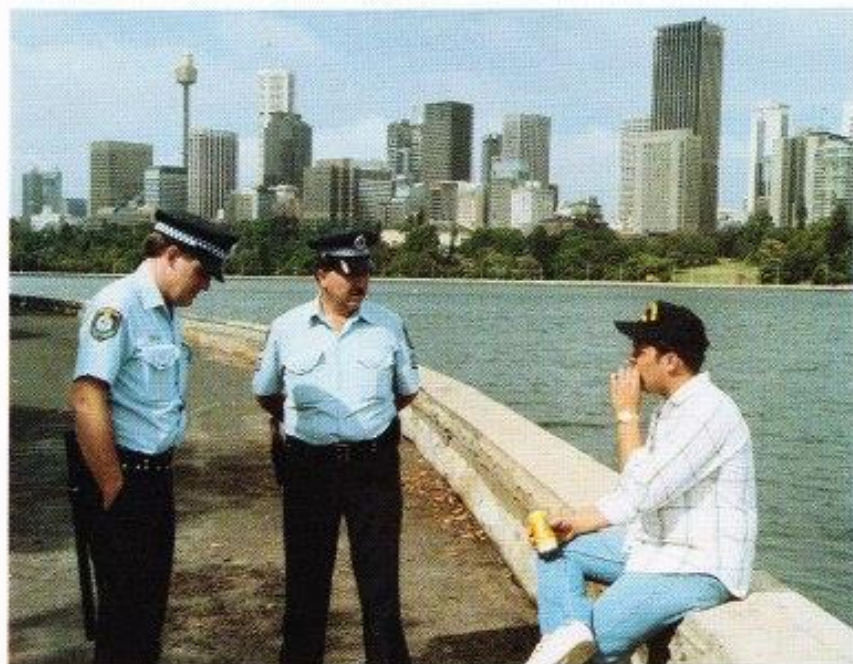
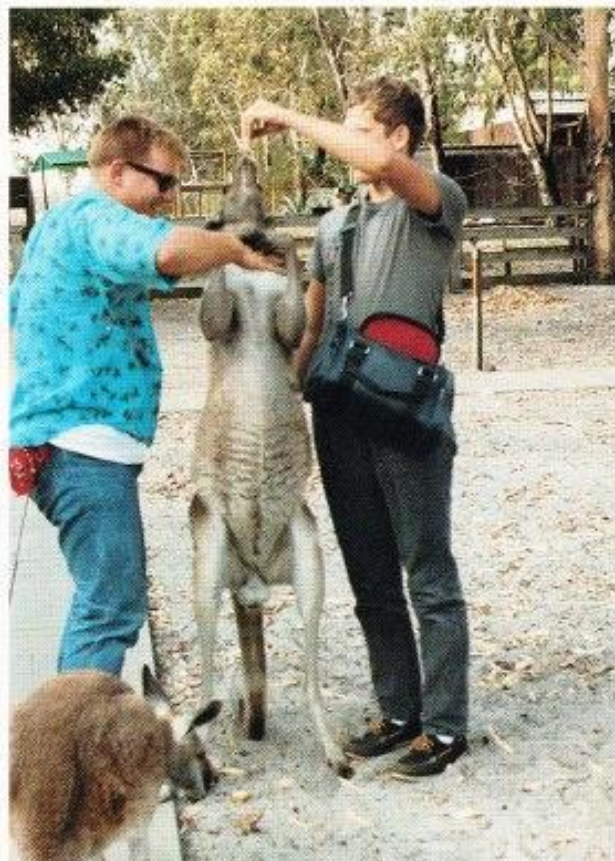
Comedy Winner



Light Weight Division Winner 89

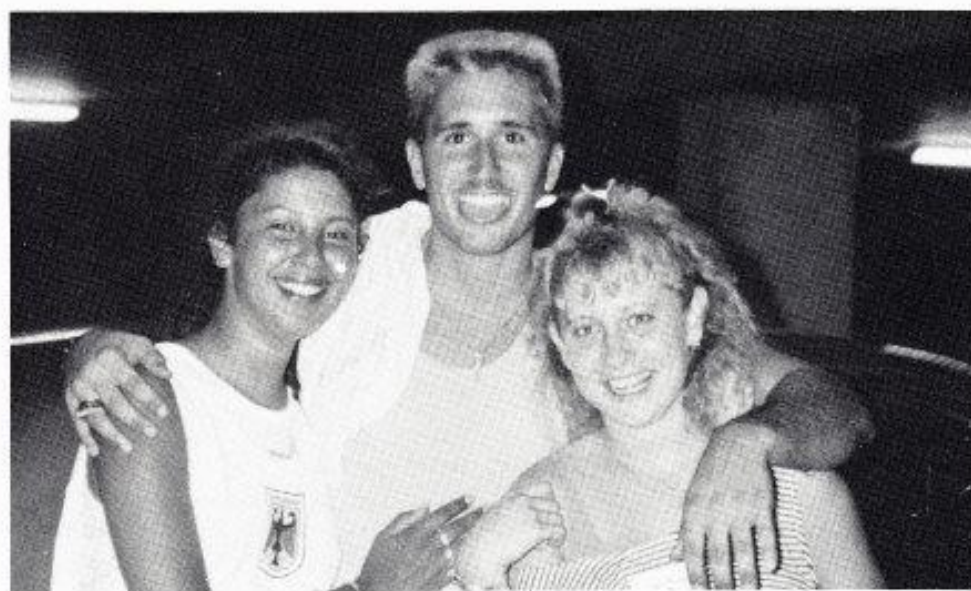
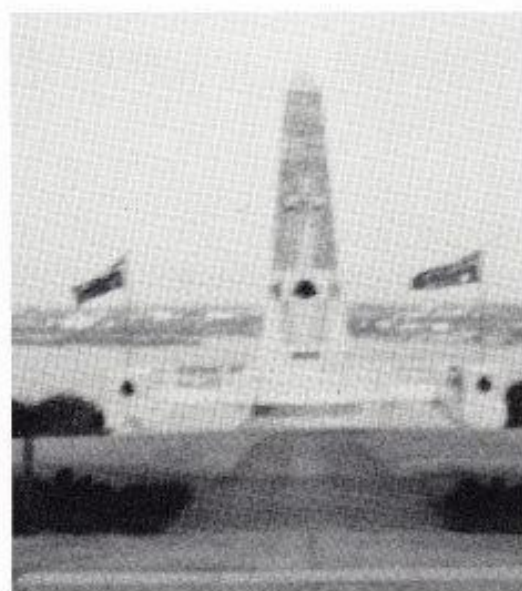
FREMANTLE/PERTH





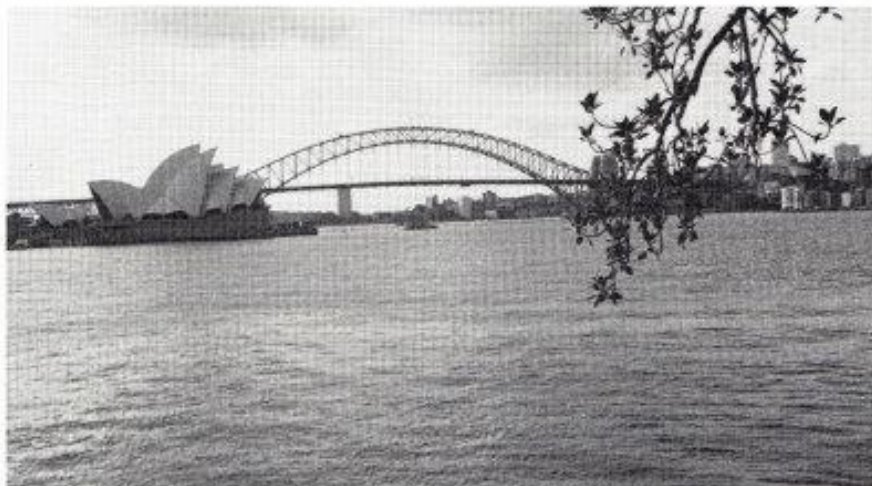
SYDNEY, AUSTRALIA

FREMANTLE



PERTH

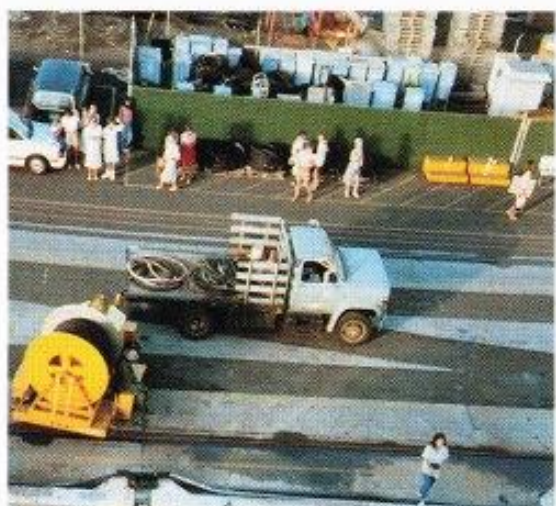
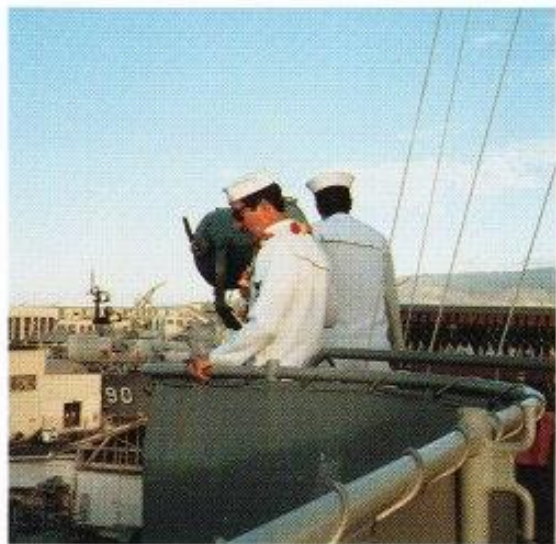
SYDNEY

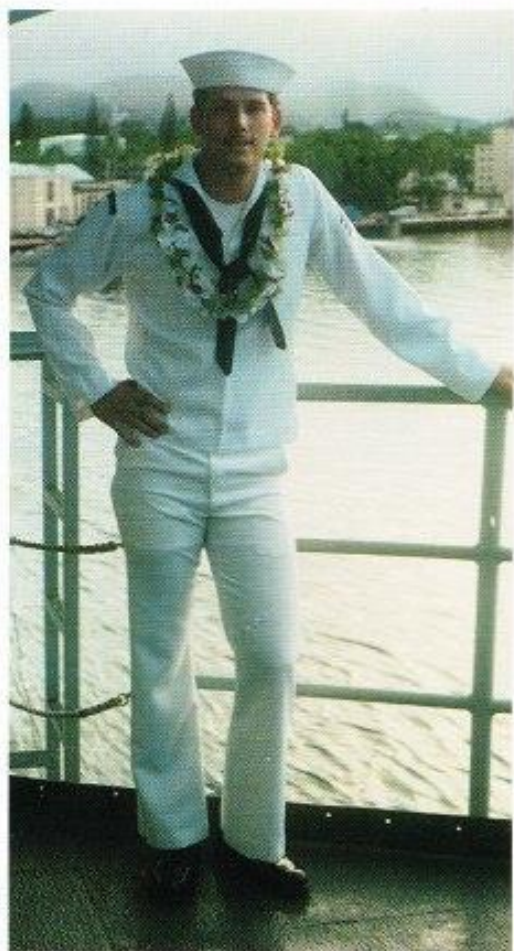
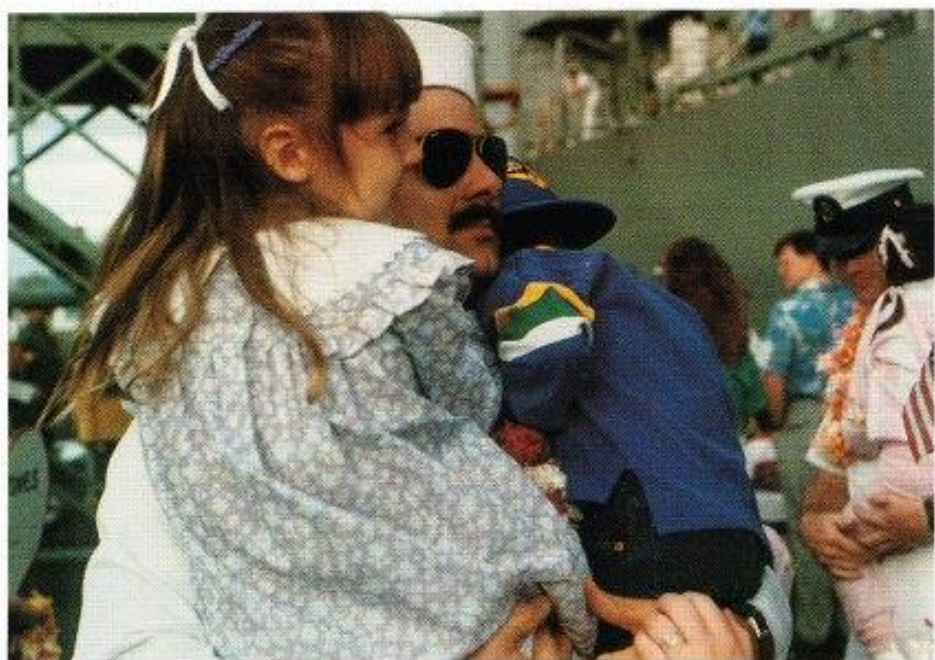


AUSTRALIA

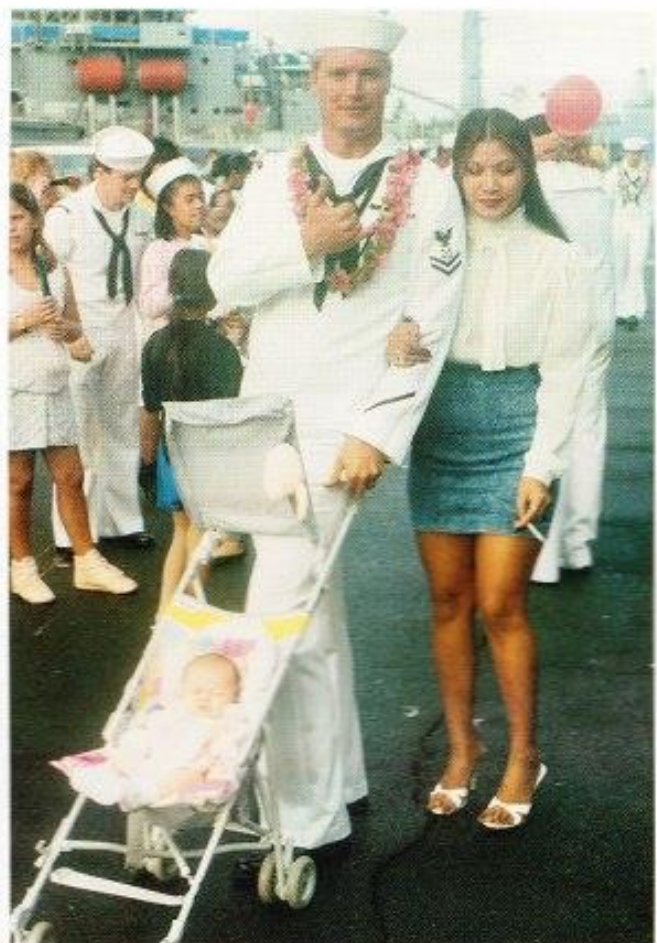
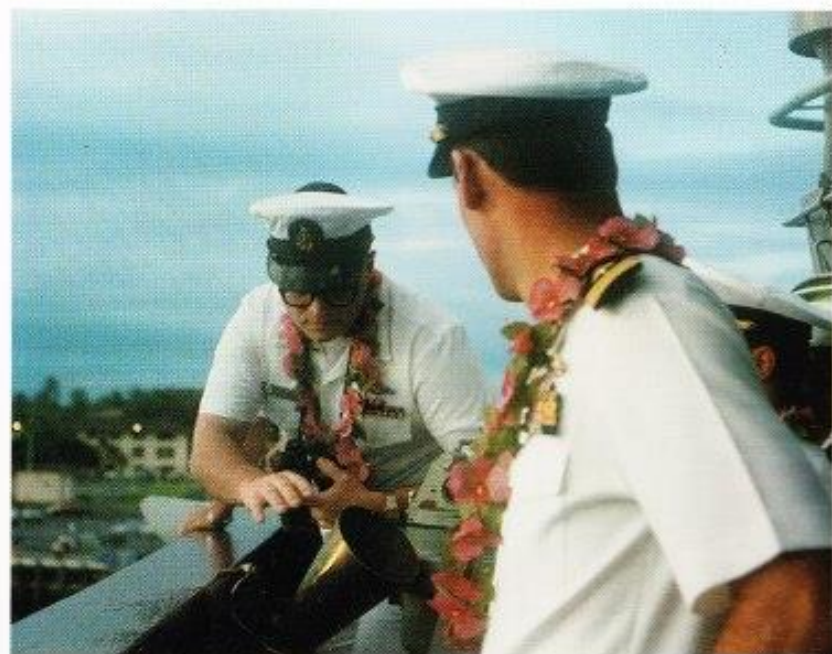


ALOHA MEANS GOODBYE





AND
H
E
L
L
O



CRUISE BOOK STAFF

LTJG Raymond Alfaro

GSMC Douglas McGhee

QM2 Mark Farthing

GSM2 Phillip Nordberg

STG3 Michael McCubbin

GSM3 Andrew Herubin

OSSN Eric Seman

