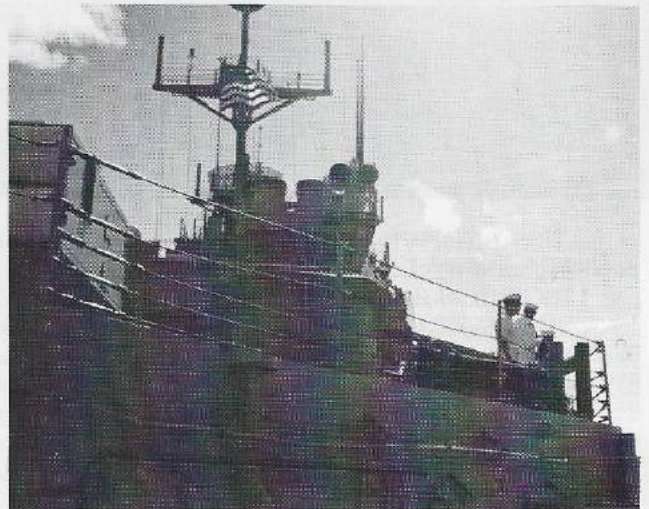
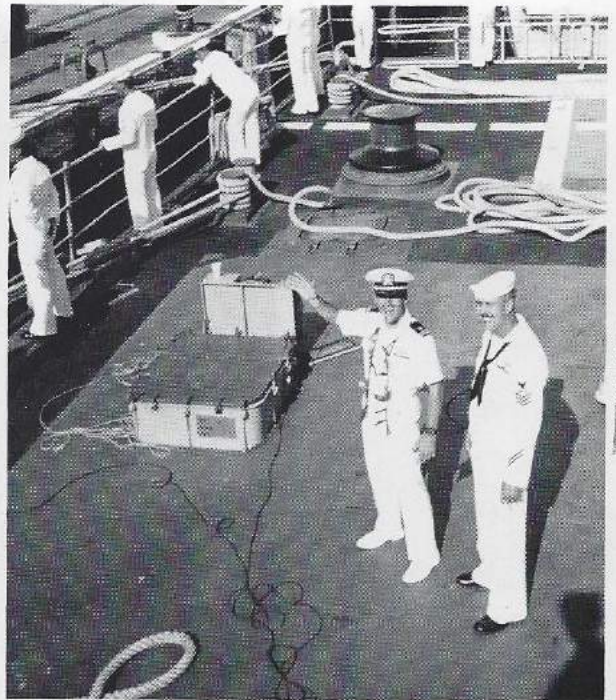
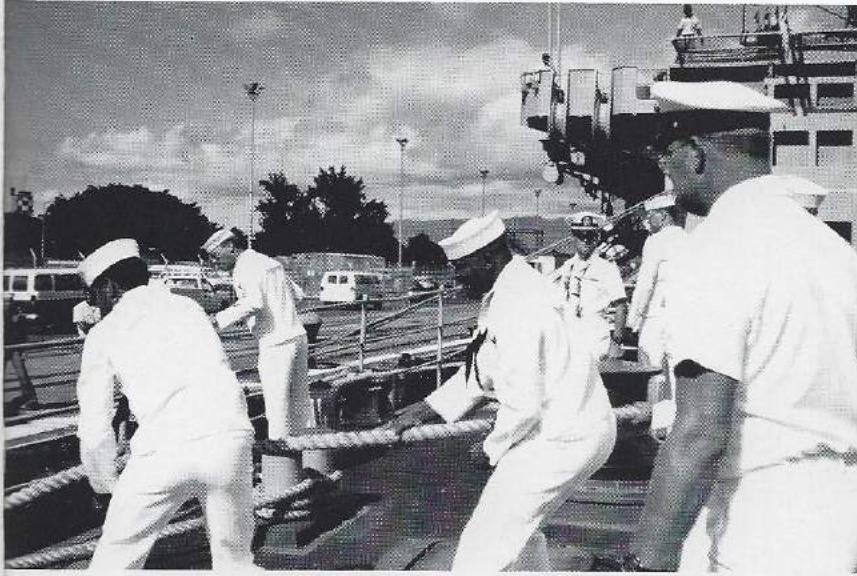




OPERATION
DESERT STORM

ARABIAN GULF
1990-1991

Underway-Shift Colors



Top, left: "Take in all lines." Line 5 is hauled aboard as LEFTWICH deploys.

Top, right: LTJG Pratt and TMI Dieckman wave goodbye to family and friends.

Middle, left: friends and families of LEFTWICH see us off.

Above: "Underway, shift colors." The Ensign flies proudly over LEFTWICH.

Left: Our last look at Pearl Harbor for quite a while!

Westpac 1990-91

USS LEFTWICH DD 984



USS LEFTWICH (DD 984) is the twenty-second SPRUANCE Class Destroyer to be designed and built by Ingalls Shipbuilding Division of Litton Industries in Pascagoula, Mississippi. Homeported in Pearl Harbor, Hawaii, LEFTWICH is assigned to Destroyer Squadron Twenty-Five.

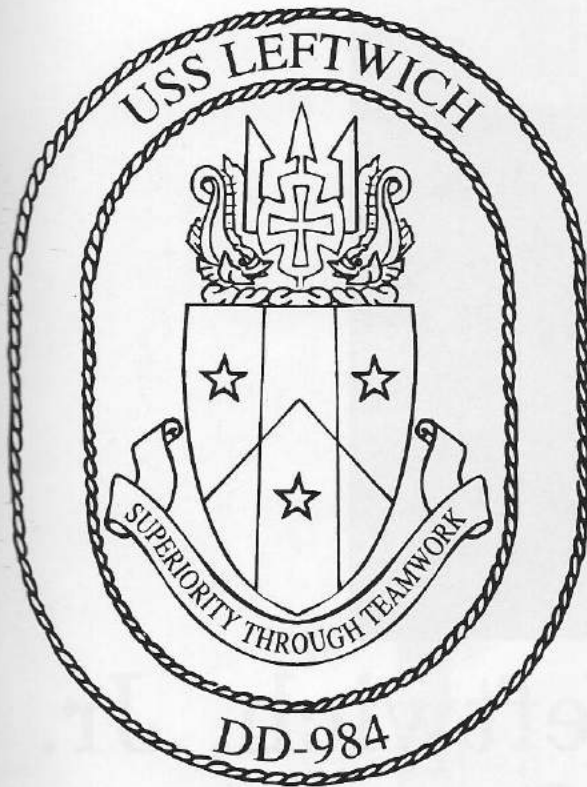
SPRUANCE Class Destroyers are unique among today's warships in that it is the first major class to be powered strictly by gas turbine engines. LEFTWICH, as her sister ships, is powered by four General Electric LM-2500 engines. Designed originally for large aircraft, these engines have been modified for marine use and produce 20,000 horsepower each. Her engines, in conjunction with twin controllable-reversible pitch propellers, are capable of moving LEFTWICH through the water at speeds in excess of 30 knots and give her a degree of maneuverability unequalled by any other warship her size. LEFTWICH's electrical generation plant is also driven by gas turbine engines which are designed to output 200 KW each.

Crew comfort and habitability were also of prime consideration in LEFTWICH's design. Berthing areas are spacious and considerable care was taken to equip the ship with features uncommon to most destroyers. Such features include a ship's library, crew's lounge, a well-equipped gymnasium and many other items at crew's comfort.

As a highly versatile multi-mission destroyer, LEFTWICH is capable of operating independently or in company with amphibious or carrier task forces. Although equipped to handle a wide variety of mission areas, LEFTWICH's primary missions are Anti-Submarine Warfare (ASW) and Strategic Strike Operations. LEFTWICH possesses some of the most advanced ASW equipment coupled with extensive sound silencing features to facilitate her accomplishment of these complex and demanding tasks. The ship is equipped with a sophisticated bow-mounted sonar, the SQS-53A, that is capable of active or passive detection and tracking of submarine contacts. In addition to her sonar, LEFTWICH's ASW weapons suite consists of one or two helicopters, an Anti-Submarine Rocket (ASROC) launching system and two triple barrelled MARK 32 torpedo tubes. All of these systems integrate with a digital computer system, the Naval Tactical Data System (NTDS). For the Strategic Strike mission area, LEFTWICH is equipped with TOMAHAWK, the Navy's latest cruise missile system. This integrated combat system with its enhanced target information processing capability and resultant reaction time provides LEFTWICH with an accurate, long-range strike capability against surface targets unprecedented in destroyer-sized ships.

LEFTWICH also boasts two 5-inch/54 caliber Mark 45 fully automatic gun mounts controlled by the digital Mark 86 Fire Control System. Additionally, the Harpoon antiship cruise missile and the NATO Seasparrow surface to air missile consolidated into the weapons suite provide offensive and defensive firepower. Integrated with NTDS, these systems allow LEFTWICH to excel in her secondary missions of Naval Gunfire Support, Surface Warfare, and Anti-Air Warfare.

The Ship's Crest



The colors blue and red are symbolic of loyalty and courage, attributes of Lt. Col. Leftwich who was killed in action in Vietnam. The areas of blue refer to the lowlands or delta areas of Vietnam and the yellow sections rising toward center allude to the highlands. The chevron-like shape, simulating a mountain, stands as a symbol of Lt. Col. Leftwich's courageous effort during an emergency extraction by helicopter from enemy infested territory during which he met his death. The vertical band refers to numerical designation of the First Marine Division, the organization with which he served. The gold stars allude to the awards of the Legion of Merit, and the silver star in base to the posthumous award of the Silver Star Medal.

The gold cross patty represents the award of the Navy Cross. The trident and dolphins are symbolic of vigilance and maritime dominance.

Ship Design Characteristics

Built By	Ingals Shipbuilding Division of Litton Industries Pascagoula, Mississippi
Keel Laid	12 November 1976
Christened	27 May 1978
Commissioned	25 August 1979
Sponsor	Mrs. Jane (Leftwich) Michael
Length	563 Feet 4 Inches
Beam	55 Feet
Draft	31 Feet
Displacement	8500 Tons
Complement	Officers-24 Enlisted-310
Speed	30 Knots
Armament	Two 5 inch 54 Caliber Gun Mounts MK 112 ASROC Launcher Two Mk 32 Torpedo Tubes NATO Seasparrow Harpoon Close in Weapon System (CIWS) Tomahawk
Aircraft	One SH-3 or Two SH-2 Helicopters
Propulsion	Four General Electric LM 2500 Marine Gas Turbine Engines (Total-80,000 Shaft Horsepower)



LCOL W. G. Leftwich, Jr. USMC

Lieutenant Colonel William G. Leftwich, Jr., was born of April 28, 1931 in Memphis, Tenn., and graduated from Central High School in that city. He was commissioned a Marine Second Lieutenant on June 5, 1953 upon graduation from the United States Naval Academy. As brigade captain in his senior year at the Naval Academy, he was specially commended at graduation for exemplary officer like qualities which contribute "to the development of naval spirit and loyalty within the Brigade."

Upon entering the Marine Corps, he completed The Basic School at Marine Corps Schools, Quantico, VA. in January 1954, and later served as a rifle platoon commander with the 2nd Marine Division at Camp Lejeune, NC. During 1955-56, he served with the 3rd Marine Division on Okinawa. On his return to the United States, he was stationed at Camp Pendleton, California, where he was promoted to captain in July 1957. He then began a three-year assignment at the Naval Academy, serving as a company officer. An excellent athlete himself, he also voluntarily performed collateral duty as assistant varsity tennis coach and battalion football coach.

In 1960, he rejoined the 2nd Marine Division, serving as a company commander until 1962 when he was named aide-de-camp to the Commanding General. In June 1963, he was assigned as aide to the Commandant Marine Corps Schools, Quantico. He was promoted to major in July 1964. He later completed a course of study in the Vietnamese language prior to reporting for duty in Vietnam in January 1965 as Assistant Senior Advisor to the Vietnamese Marine Brigade.

Joining Task Force Alfa, he participated in 27 major operations against the Viet Cong in the central highlands of Vietnam, and spent more than 300 days in the field. He was wounded in the battle of Hoai An, March 9, 1965 and, besides the Purple Heart, was awarded the Navy Cross for extraordinary heroism. According to his citation, he "... played a major part in all phases of the successful relief of the village of Hai An, which was under heavy enemy attack by two Viet Cong battalions ... By his own personal example ..., he led the attack ... Despite injuries by enemy machine gun bullets in the back, cheek, and nose, he went to the aid of a mortally wounded comrade ... and delayed his own evacuation until he could call for additional air strikes and brief the task force

commander of the situation."

He returned to the United States in January 1966, served as an instructor at the Basic School, then completed the Command and Staff College in June 1967 and was promoted to Lieutenant Colonel in November 1967 while serving as a systems analyst with the Manpower Management Information Branch, G-1 Division. He later became head of the Systems Analysis Section.

In 1968, LtCol. Leftwich was selected by the Under Secretary of the Navy to be his Special Assistant and Marine Corps Aide. He served in this capacity under the Honorable Charles F. Baird, and Mr. Baird's successor as Under Secretary of the Navy, the Honorable John W. Warner.

In April 1970, he began his second tour of duty in Vietnam, serving initially as an infantry battalion commander with the 2nd Battalion, First Marines. On June 30, he assumed duty as Commanding Officer of the 1st Reconnaissance Battalion, 1st Marine Division (Reinforced).

On November 18, 1970, LtCol. Leftwich was killed in a helicopter crash during an emergency extraction of one of his reconnaissance teams. In accordance with his practice of accompanying every emergency extraction called for by his reconnaissance teams, he was serving as senior "extract officer" for such a mission on the day of his death. The team had incurred casualties and requested an emergency extraction from enemy-infested territory in an area beginning to be enveloped by dense fog. The team was extracted under LtCol. Leftwich's personal supervision, then, the helicopter began its ascent. However, it crashed into a mountainside in enemy territory, killing all aboard.

A partial list of his medals and awards includes: The Navy Cross, the Silver Star (posthumous), the Legion of Merit with Combat "V" and two gold stars, the Meritorious Service Medal, the Air Medal with one gold star, the Purple Heart with two gold stars, and various personal awards from the Republic of Vietnam.

LtCol. Leftwich was survived by his wife, the former Jane Ferrer, and two sons, William G. III, and Scott F. He was also survived by his mother, Mrs. Mattie H. Leftwich of Memphis. His father was deceased.

Commander Destroyer Squadron Thirty-Five



Captain William L. Putnam, USN

Captain William L. Putnam is a native of California. Upon graduation from Stanford University in 1967, he was commissioned in the Naval Reserve via Officer Candidate School. From 1967 to 1971, he served in USS NEPTUNE (ARC-2), USS JOHN PAUL JONES (DDG-32), and on the staff of Commander Destroyer Squadron THIRTEEN.

In 1972, Captain Putnam augmented to the regular Navy and was ordered to USS JOSEPHUS DANIELS (CG-27) as Operations Officer. From 1975 to 1978, he served as electronic warfare and cryptology analyst in the Systems Analysis Division of the Office of the Chief of Naval Operations. He then attended the Graduate School of Business at Stanford University as a Sloan Fellow, receiving a Masters degree in 1979. Returning to sea, he was the commissioning Executive Officer in USS WADSWORTH (FFG-9), the lead ship of the class in the Pacific fleet.

From 1981 to 1984, Captain Putnam served as a budget analyst for the Deputy Chief of Naval Operations (Surface Warfare), then as Administrative Assistant to the Director, Navy Program Planning. In May 1985, he assumed command of USS SCOTT (DDG-995), Deploying to the Mediterranean Sea from August 1985 to April 1986 during Achille Lauro and Gulf of Sidra operations. In July 1987, Captain Putnam joined the CNO's Strategic Studies Group at Newport, Rhode Island. From July 1988 until May 1990, Captain Putnam served as Executive Assistant to the Comptroller of the Department of Defense.

Captain Putnam's awards include the Defense Superior Service Medal, the Defense Meritorious Service Medal, the Meritorious Service Medal with gold star, the Navy Commendation Medal with gold star, and the Navy Achievement Medal.

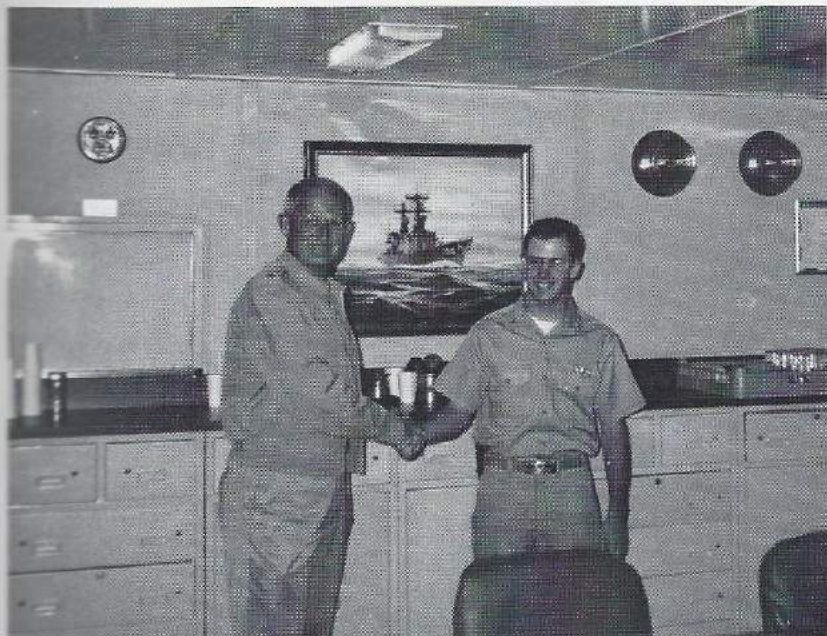
Commanding Officer



Commander Patrick M. Garrett, USN

Commander Garrett received his commission in August 1972 via Navy ROTC at the University of Utah. His initial sea assignments were USS CHEWAUCAN (AOG-50) and USS HORNE (DLG-30) which included several deployments to the Sixth and Seventh Fleets. Following a tour as an instructor at the Surface Warfare Officer's School, Coronado, he completed tours as Weapons Officer, USS OBRIEN (DD-975) and Engineering Officer, USS LEAHY (CG-16). He then served in the Pentagon on the Staff of the Deputy Chief of Naval Operations (Surface Warfare) as Branch Head for New Construction Manpower, Logistics, and Training Requirements. Returning to sea, Commander Garrett completed tours as Executive Officer, USS WORDEN (CG-18) and Chief Staff Officer for Commander, Destroyer Squadron Twenty-Five. While assigned to COM-DESRON 25, he was ordered to command of USS RATHBURNE (FF-1057) as interim Commanding Officer pending arrival of the next regularly assigned Commanding Officer.

Commander Garrett's awards include two Meritorious Service Medals, two Navy Commendation Medals, the Navy Achievement Medal and various campaign and service awards. He is married to the former Kathleen Roll of San Diego and they have two children, Colleen and Devin.



Left: Commander Garrett presents LTJG Bourke with his Surface Warfare Officers' Pin.

Below: Commander Garrett catches up on some reading in the pilot-house while pierside Bahrain.



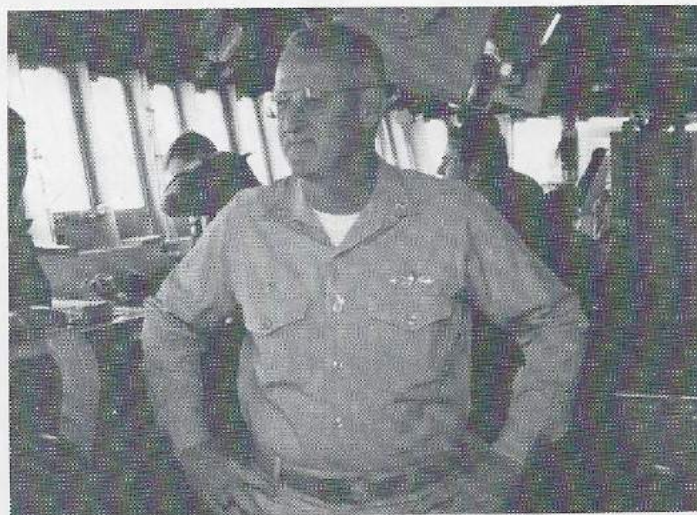
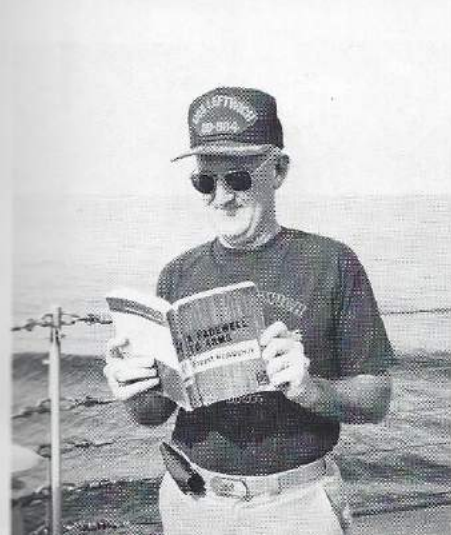
Above: Commander Garrett finds time for lunch on the bridgewing during an Underway Replenishment evolution.

Right: Relaxing on the bridgewing, Commander Garrett looks back on a very successful deployment as well as his tour as Commanding Officer of LEFTWICH as we near Pearl Harbor.



Lower, right: Commander Garrett surveys the situation on the bridge.

Below: Commander Garrett poses with Hemingway's A FAREWELL TO ARMS perhaps wondering when Hussein's edition will hit the shelves!



Executive Officer



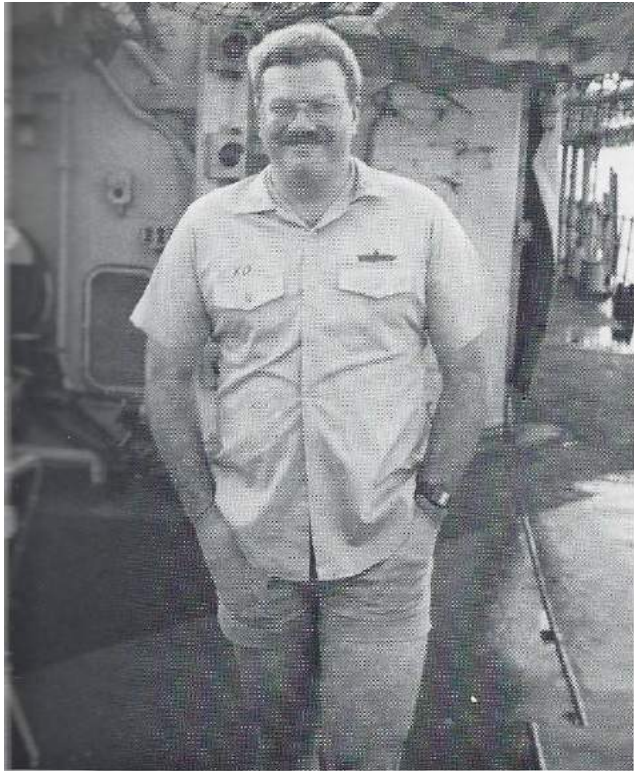
Lt Commander Michaels Frick, USN

Lieutenant Commander Michael S. Frick is a native of Panama City, Florida. He served on active duty as a Machinist Mate Third Class, USN prior to being appointed a Midshipman, USN. He graduated from the U.S. Naval Academy in 1977.

Following the Surface Warfare Officer Basic Course LCDR Frick served on USS CARPENTER (DD 825) as Main Propulsion Assistant and Weapons Officer from February 1978 until February 1981. After serving as Officer-In-Charge of a Mobile Training Team on ex-USS CARPENTER to the Turkish Navy he reported to the Naval Post Graduate school in Monterey Ca. in May 1981. Upon receiving a Master of Science Degree in ASW Systems Technology in September 1983 he reported to Department Head Course in Newport, R.I. from October 1983 to May 1984. Following a TAD assignment to Commander, Destroyer Squadron Three One he served on USS HENRY B. WILSON (DDG-7) as Engineer Officer from September 1986 until February 1988. LCDR Frick next served at Naval Ocean Systems Center, San Diego, CA. as Deputy Program Manager for the MK 46 MOD 7 Torpedo Development Program from February 1988 until March 1990. He reported as Executive Officer, USS LEFTWICH (DD 984) in June 1990.

Lieutenant Commander Frick's award's includes the Navy Commendation Medal (2 Gold Stars in lieu of Third award) and Navy Achievement Medal.

Lieutenant Commander Frick is married to the former Lisa Mason Powell of Severna Park, Maryland. The Frick's have four children, Jennifer (9), Shannon (7), Brian (4) and Meghan (3).



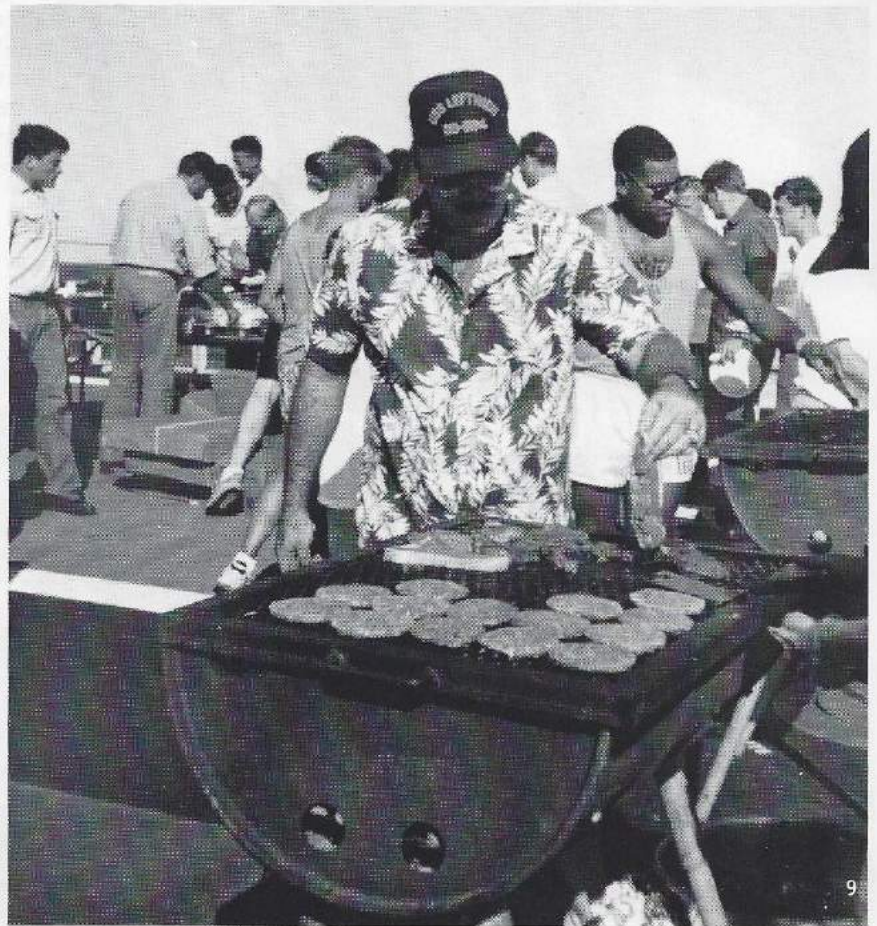
Top, left: Honorable Shellback XO enjoying the Wog Day festivities.

Above: LCDR Frick offering guidance to a junior officer while alongside for fuel.

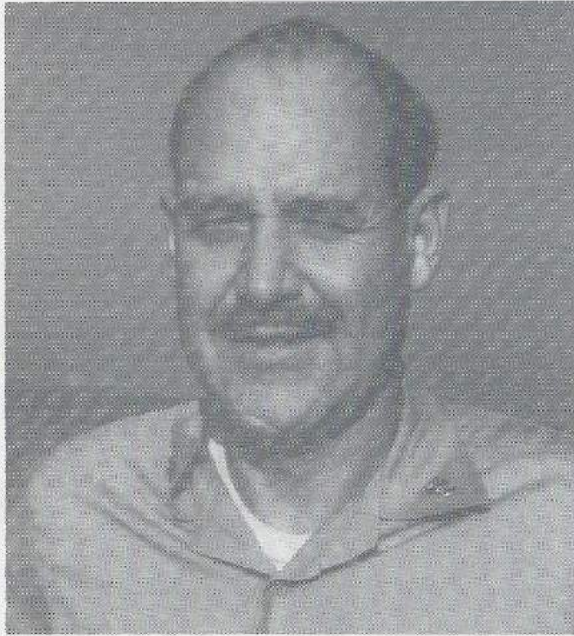
Middle, left: XO leads the choir at the Wardroom's Dining In in Subic Bay.

Lower, left: Was that the XO I saw smiling?

Below: Cooking 'em up just right at one of our many Fantail Cookouts.



Command Master Chief



Master Chief Petty Officer
Wooten

Master Chief Petty Officer Wooten joined the Navy in November 1965. After serving as a seaman, he was selected to attend Missile Technician "A" school. On completion of "A" school, he was converted to FTM and became a TALOS Missile Technician. Primary career assignments have been: USS Long Beach (CGN 9), where he served from 1968 to 1974, made four tours in Vietnam and earned the Navy Achievement Medal and Meritorious Unit Citation; Navy recruiting duty; USS Detroit (AOE 4, from 1974 to 1976, where he earned the Navy expeditionary medal and made two Indian Ocean tours and two Med cruises; Senior instructor at Guided Missile School, Dam Neck, Virginia, where he was the Navy liaison for installation of the NATO Seasparrow 7-M system. He reported to LEFTWICH in August 1985 and became the Command Master Chief in June 1988. While serving on LEFTWICH, he has earned the Armed Forces Expeditionary Medal, Battle E Ribbon, and Navy Commendation Medal.



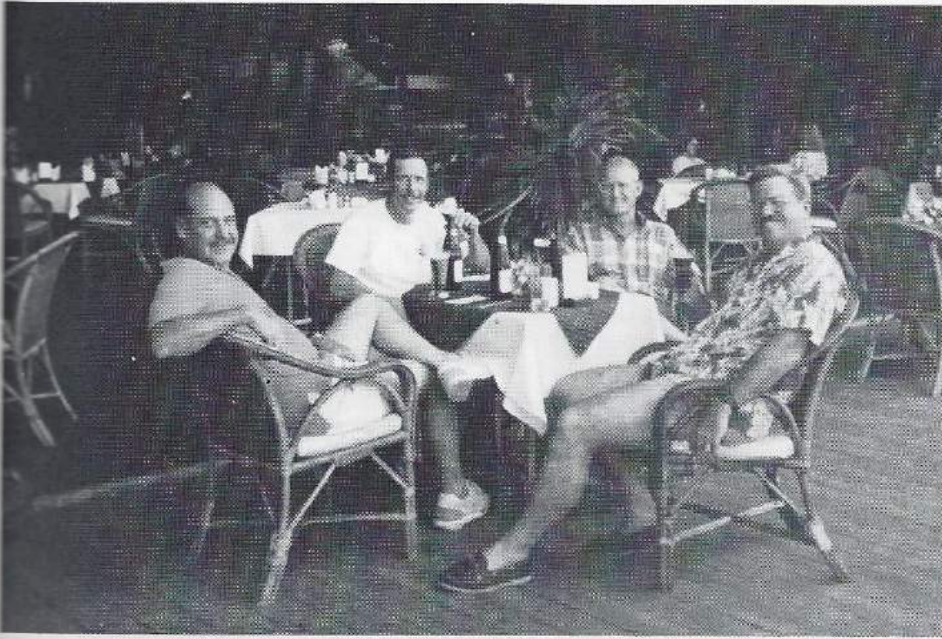
FCCM Terry Ashenfelter

Originally from Baltimore, Maryland, Fire Controlman Master Chief Terry M. Ashenfelter enlisted in the Navy on 12 January 1972 at Fort McHenry, MD for a period of two years in the Naval Reserve. In his almost twenty years of service, the Master Chief has served onboard the following commands: USS NIMITZ (CVN 68), USS BRISCOE (DD 977), NAVAL SEA SUPPORT CENTER ATLANTIC, Portsmouth, VA; GUIDED MISSILES SCHOOL, Dam Neck, VA and FLEET TRAINING UNIT MOBILE COMBAT SYSTEMS TRAINING TEAM, Little Creek, VA.

Master Chief Ashenfelter wears the Navy Achievement Medal, Four Good Conduct Medals and various service medals.

The Master Chief reported to LEFTWICH in February 1990 as the senior Fire Controlman and was selected for the Command Master Chief position in November 1990.





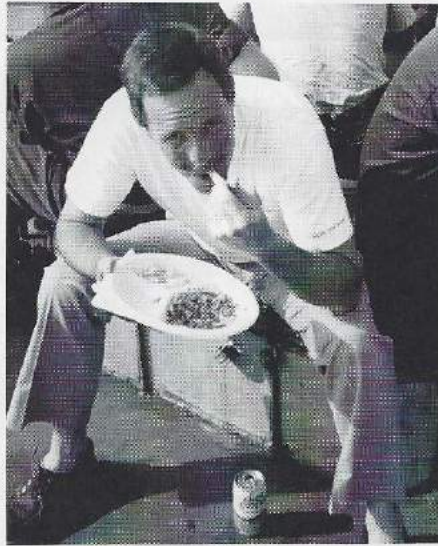
FCCM Wooten, FCCM Ashenfelter, Commander Garrett, and LCDR Frick relaxing in Phuket, Thailand.



Alright, how do you want your steak?



Before



Hmmm, he's not eating those steaks, is he?



Overconfident Master Wog!

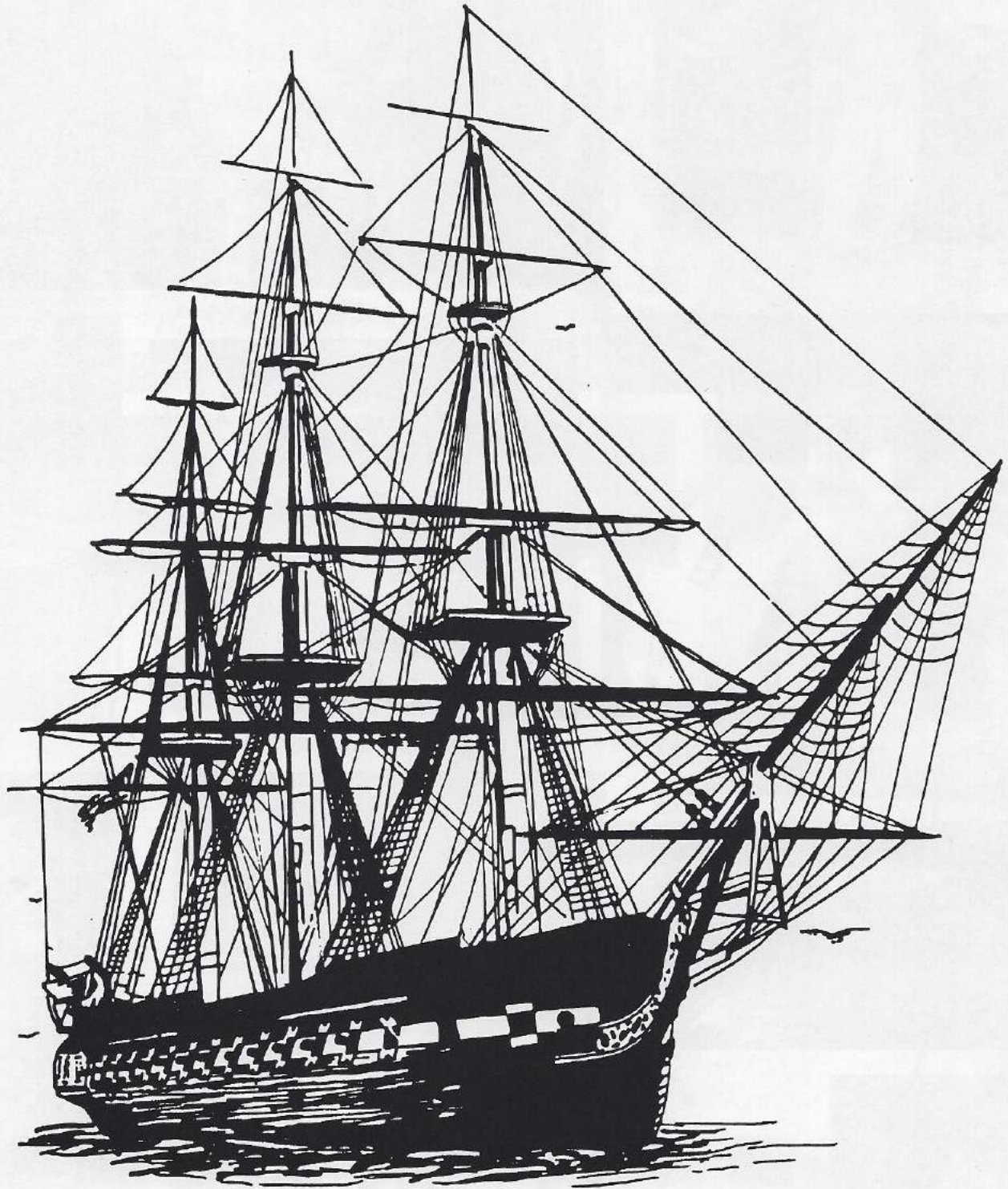
After



Greatly humbled Wog!!

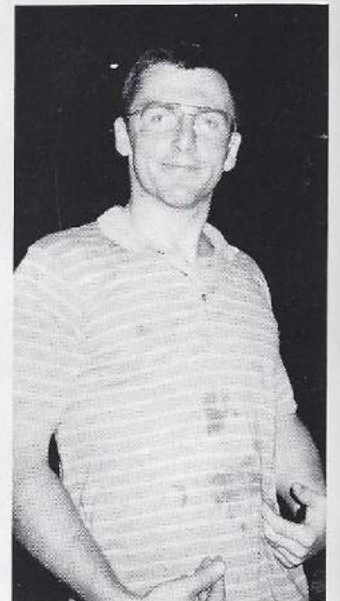
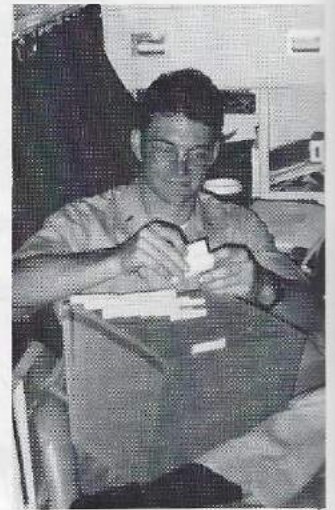


Our Crew

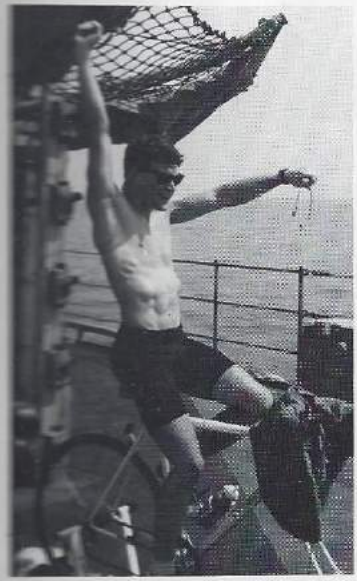
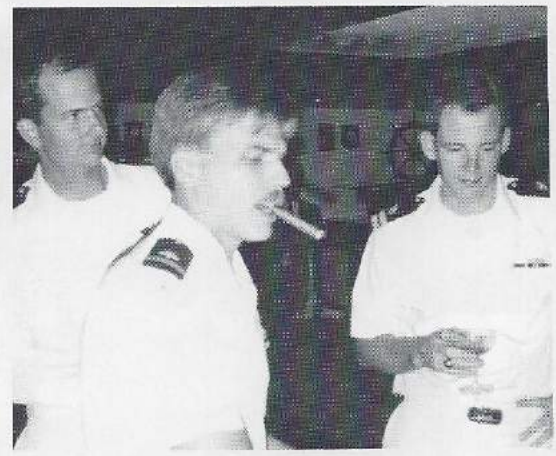


Expect The Best

Officers

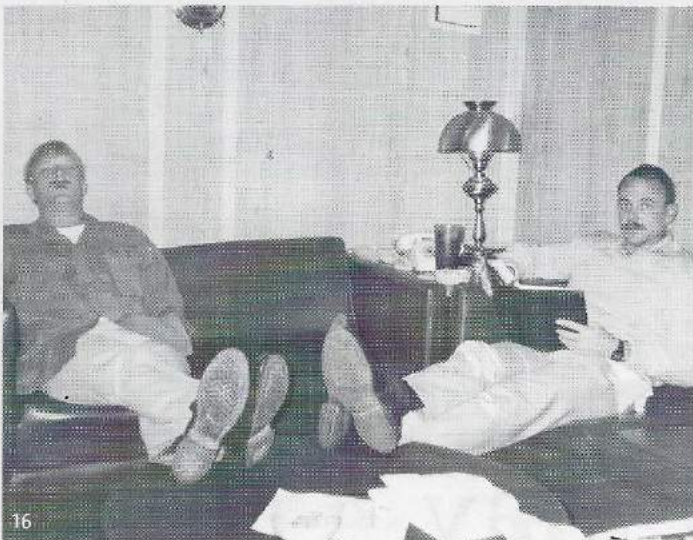
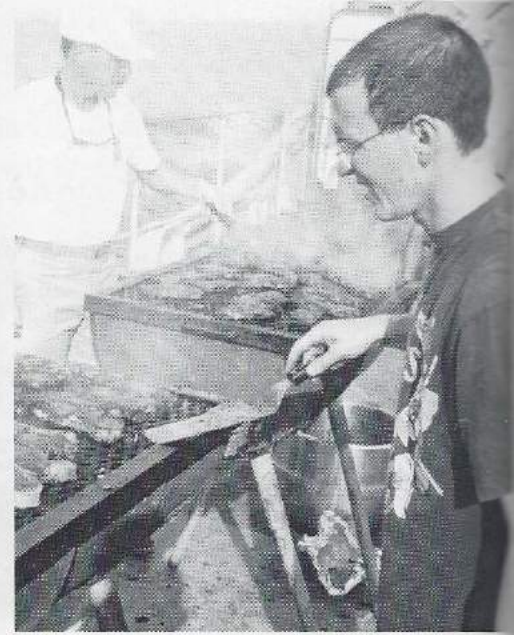


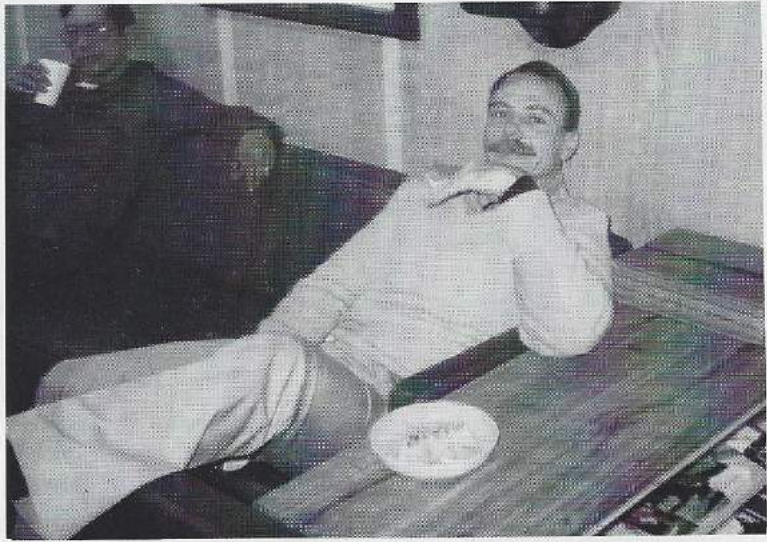
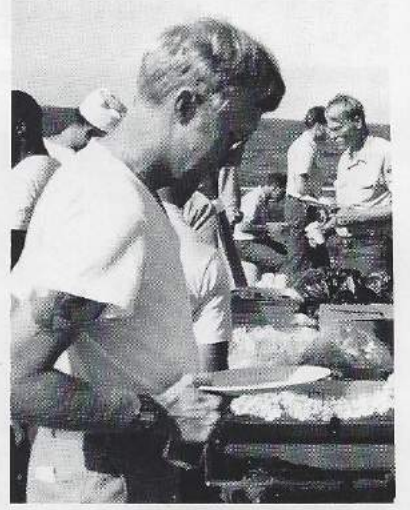
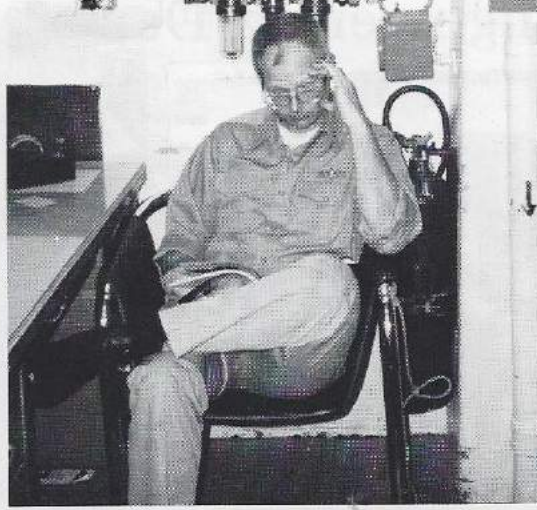
At Work



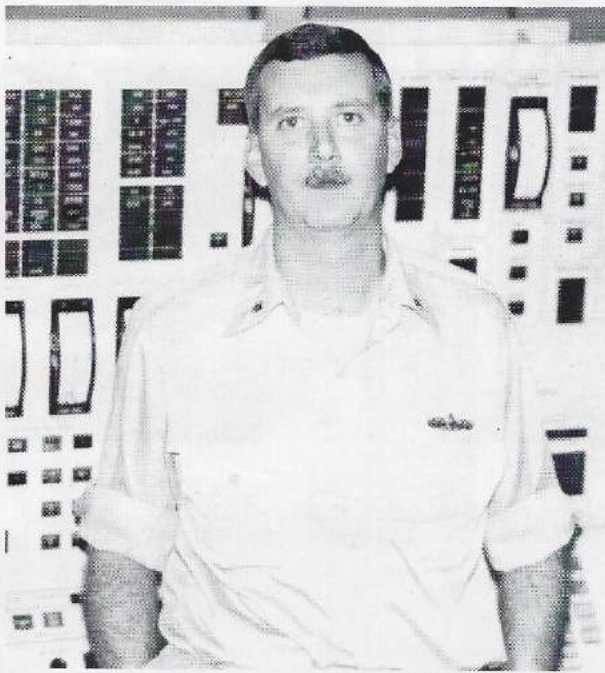
And At Play

Chief Petty Officers





Engineering Department



LCDR Robert L. Beattie, USN

C
h
e
n
g



LT Durwood L. Lewis, USN

The Engineering Officer is responsible for the operation and maintenance of all propulsion, electrical, mechanical and auxiliary systems, and maintaining damage control equipment. The department is composed of four divisions: Main Propulsion (MP), Repair (R), Electrical (E), and Auxiliaries (A).

MP Division is manned by Gas Turbine Systems Technicians-(GSM's) Mechanical and (GSE's) Electrical who are responsible for operating and maintaining the propulsion equipment and its control systems.

R Division is manned by Damage Controlmen (DC's) who maintain the various fire fighting and flooding equipment throughout the ship; Hull Technicians (HT's) who maintain and repair the ship's hull and fittings and fabricate, cut and weld to repair damage to the ship; and Machinery Repairmen (MR's) who manufacture from stock various components of the ship's machinery.

E Division is manned by Electrician's Mates (EM's) who are responsible for providing electrical power throughout the ship; and Interior Communications Technicians (IC's) who are responsible for maintaining the ship's gyro compass, alarm systems, and interior communications.

A Division is manned by Enginemen (EN's) who maintain the auxiliary equipment required for refrigeration, air conditioning, and high and low pressure air throughout the ship.



Left: Turning Over. "Oh sure, everything works great!"

Below: After 30 months as CHENG, he'd probably settle for Baghdad.



Left: Alright, who forgot CHENG's wake-up call?

Below: A normal watch in Central.

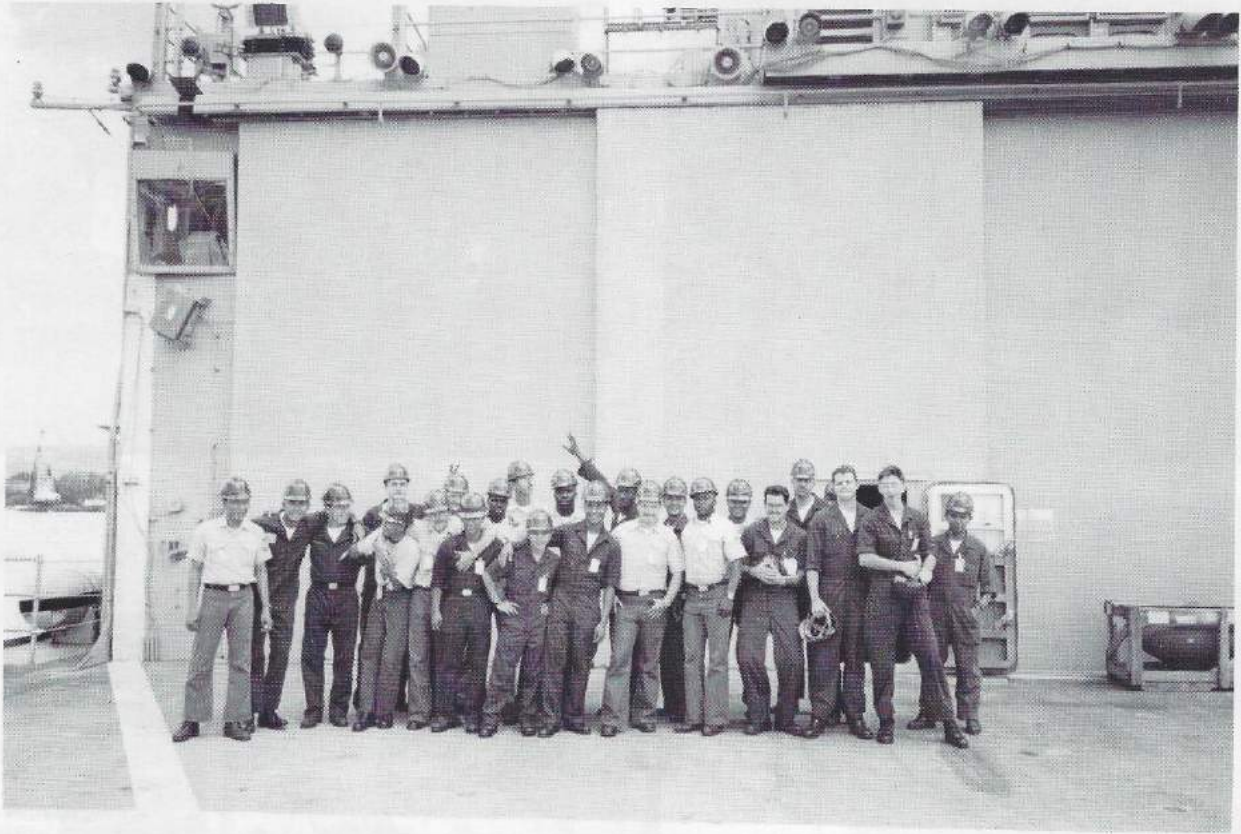


Left: That's way too close to the pool for a *dry* department head.

Below: Don't worry CHENG, it'll get worse. Oh by the way, we're out of ketchup.



MP Division



MP Division: Back Row Left to Right: GSM3 Cousineau, GSM2 Sturgill, GSM2 Sellers, GSM2 Crim, GSMFN Lewis, GSM3 Joseph, GSE3 Duran, GSM3 Celebrado, GSM2 Hansen, GSE2 Biscocho Front Row Left to Right: GSM2 Bulseco, GSE3 Bui, GSM3 Barraza, GSEFN Banh, FN Laughlin, GSMFN Ibarra, GSM3 Flores, GSM3 Rrig, FN Pinnell, GSM3 Jones, GSM1 McEldowney, GSE1 Russell, GSE2 McKenzie



ENS Carpenter and LTJG Pratt making up fuel figures for the OPSUM.



ENS Carpenter's last watch as a Snipe!



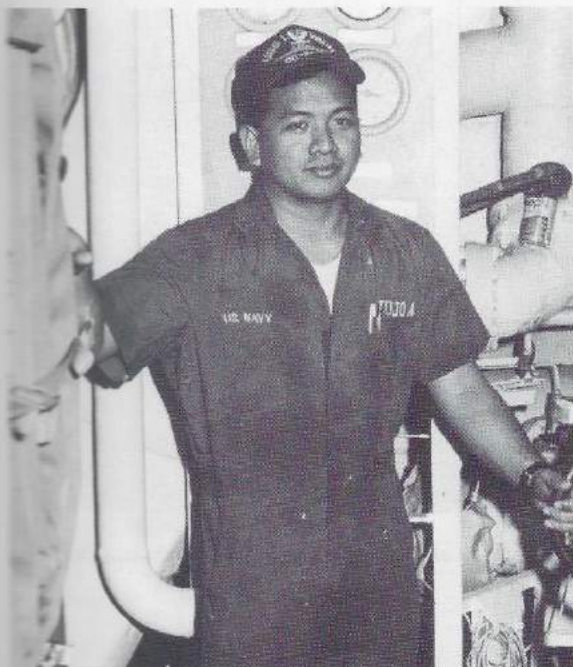
GSM2 Crim trying to con GSE2 McKenzie into helping him



FN Pinnel loves mornings

FN Laughlin having a learning experience

GSM3 Aglugub hangin in the hole



GSE2 McKenzie about to lose his camera

A rare trip outside for the engineers



A Division

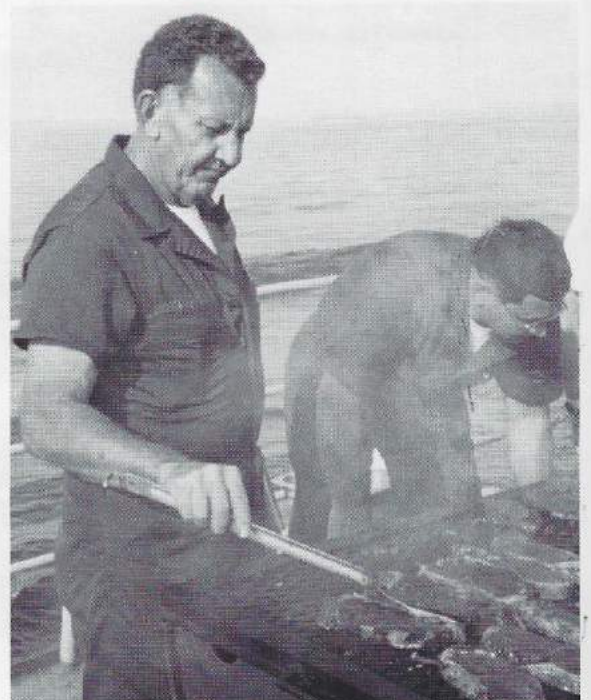


Auxiliaries Division: Standing Left to Right EN1 Norstadt, ENCS Leyva, EN3 Waddel, EN3 Peck, EN3 Rosenberg, EN3 Kidd
Kneeling Left to Right EN2 Sousa, EN3 Jones, EN3 Ascino



LTJG Johnson hiding from the CHENG.

A G a n g

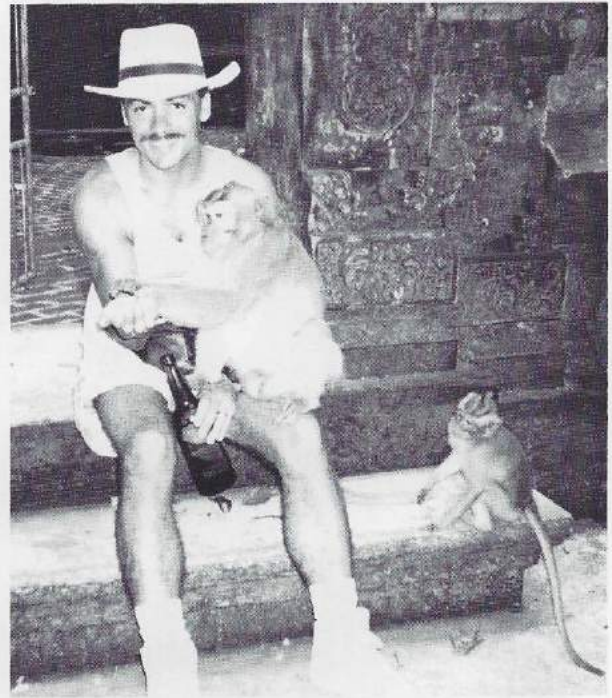


ENC Norstadt and ENCS Leyva cooking steaks at a Fantail cookout.



Slimy wogs

EN2 Sousa sharing his beer with a friend



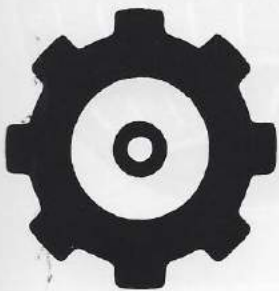
Slimier wogs



EN2 Sousa and his new friend Lunch



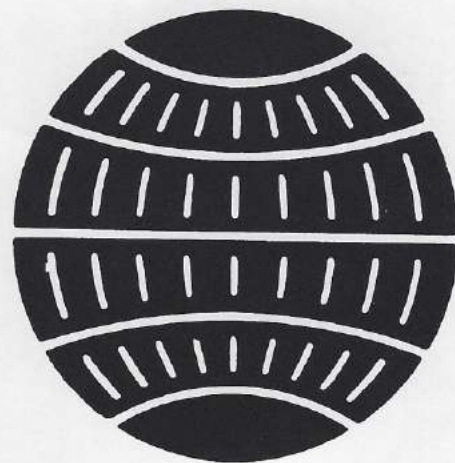
EN3 Waddel, EN2 Sousa and EN3 Kidd have fun with duct tape

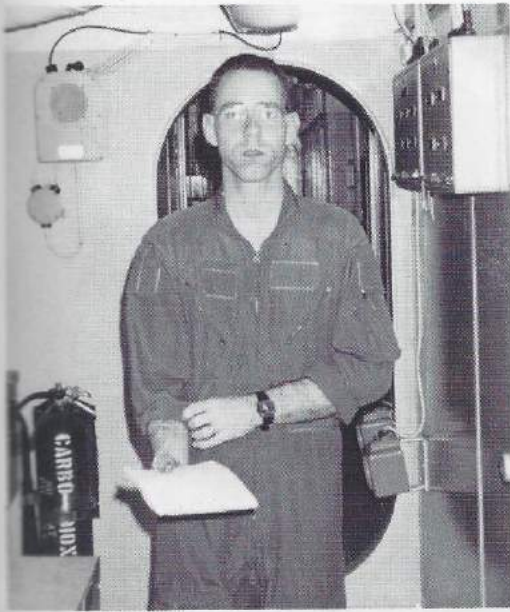


E Division



Electrical Division: (Left to Right) EMCS Manalo, EM1 Farrar, EMFN Baldovino, EMFN Vanbennekom, EN2 Gonyea, EN3 Koontz Not Pictured: EM3 Polanco

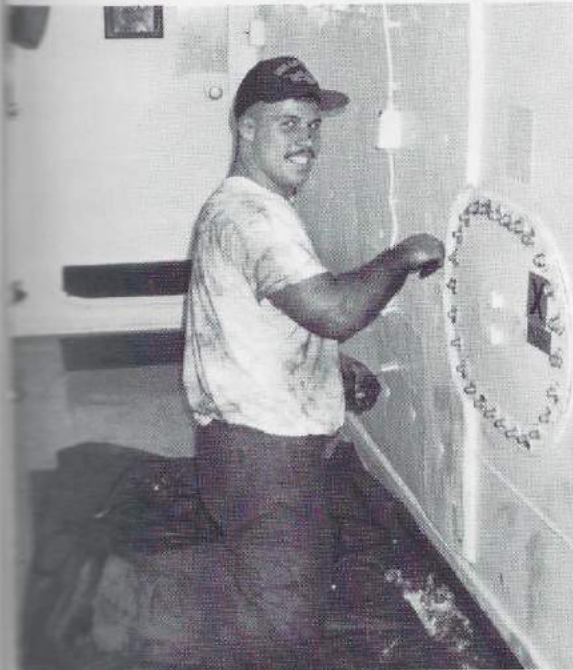




LTJg Carpenter looking somewhat lost



IC2 Berry, GSM2 Gist and EN3 Jones hanging out in CCS



You'd be surprised what you find behind these hatches



DeeJay Simmons always had the right tunes



Still watching.

R Division



Repair Division: Standing Left to Right HT1 Kirsch, DC2 Sparks, MR2 Drew, HTFN Lashbrook, DC2 Waters, HTFN Bruce, FN Bedgood, DC1 Steele. Kneeling Left to Right: FN Crayton, FN Ayers, FN Mishko, FN Guerrero, DC2 Davidson, HT2 Fife

Before

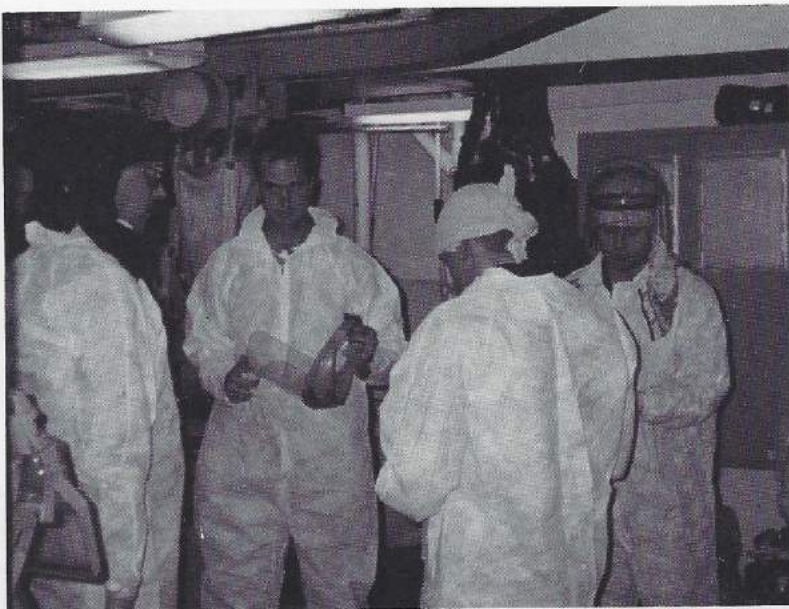


"Alright, tomorrow's Wog Day and I'm sure that I can depend on you guys to look after me."

After



"Yeah, RIGHT!"



Top, left: DC1 Steele verifying that Condition Modified Zebra is set on the Main Deck.

Above: HT1 Kirsch and MR2 Drew show LT Lewis the newest in springtime fashions.

Left: DCFN Guerrero catches up on the war with CNN while enjoying a game of darts.

Right: HT3 Bruce invites everyone to DC2 Davidson's blanket party.



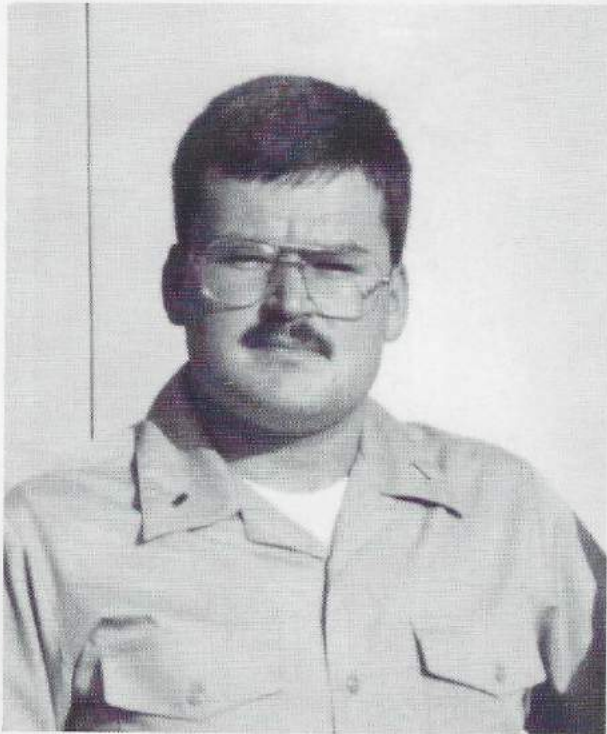
Left: Damage Control gear was always laid out and ready while LEFTWICH was in the Arabian Gulf.

Above: DC3 Miklian takes a break from Flight Quarters.

Right: HT3 Bruce surveys the captured arms and ammunition from Iraqi held Qaruh Island.



Combat Systems Department



C
S
O



LCDR Steven J. Haussmann, USN

LT Michael E. Smith, USN

The Combat Systems Officer is responsible for the operational readiness of all the ship's combat systems equipment. He is charged with the readiness and maintenance of all radars, underwater surveillance equipment, and weapons systems. The department is composed of four divisions: Anti-Submarine Warfare-Gunnery (CG), ASW (CA), Missiles (CM), and Electronics (CE).

CG Division is manned by Gunner's Mates (GMG's) who maintain the two 5 inch guns, and the various small arms carried aboard ship, MK 86 Gun Fire Control Technicians (FC's) who maintain the tracking radars and control systems for the 5 inch guns, and Close-In Weapons System (CIWS) Fire Control Technicians (FC's) who maintain the two CIWS mounts.

CA Division is manned by Sonar Technicians (STG's) who maintain the ASW sensors and equipment required to identify and track submarine contacts; ASROC Gunner's Mates (GMM's) who maintain the Anti-Submarine Rocket (ASROC) weapon system; and Torpedomen (TM's) who maintain the Torpedo Tubes.

CM Division is manned by Fire Control Technicians (FC's) who maintain the Tomahawk, Harpoon, and Seasparrow Missile systems.

CE Division is manned by Electronic Technicians (ET's) who maintain the radars, electronic communications, and test and support equipment; and Data Systems Technicians (DS's) who maintain the ship's computer systems.



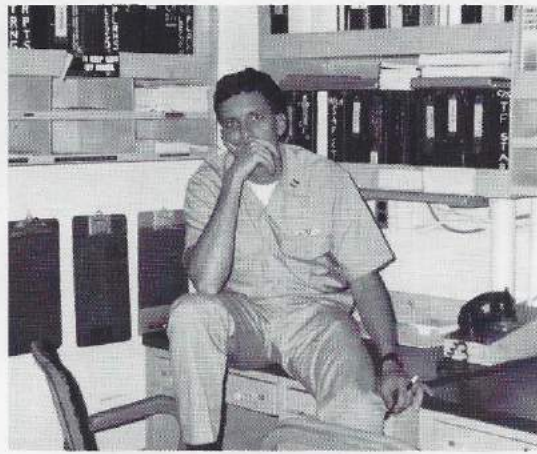
What makes you think we have an alcohol problem?



We get drunk, we pass out, trees grow out of our heads, no problem



The big cheese and porkchop sort mail



Give him a tech manual, that'll shut him up



Mr. Smith's big night out



Next thing you know, he'll be dancing on tables!

Well done or really well done?



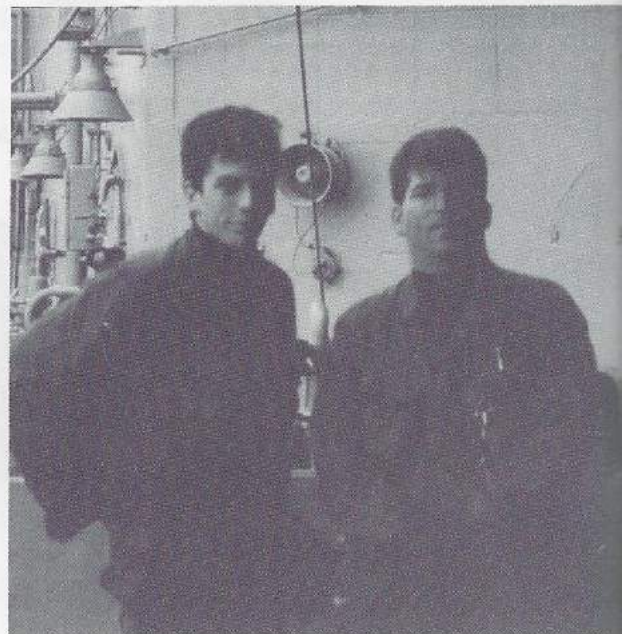
CA Division



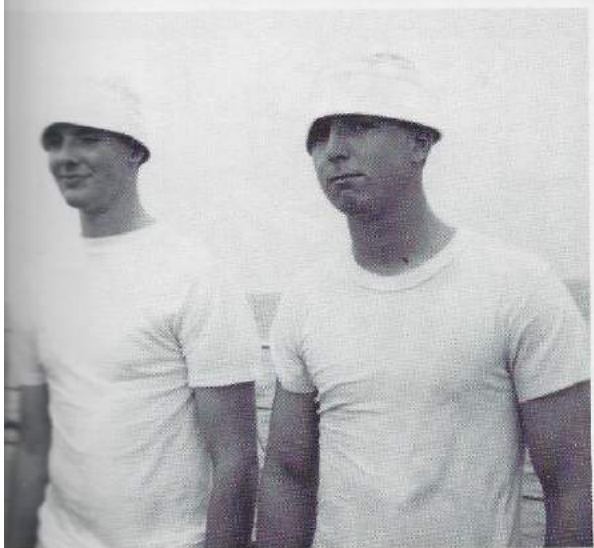
CA Division is (Left to right, standing) TM1 Diekman, STG2 Kinney, STG2 Moynihan, STGNS Smith, GMM3 Lamouthe, STG3 Wrocklege, LTJg Bourke, STG2 Johnson, STG3 Margolis, STGNS Fraizer, STG3 Cook, STGCS Johnson, STG1 Sorboen, (Left to right kneeling) StG1 Fenton, STG2 Nimmo, STG1 Hunt, GMM3 Smith, STG2 Rasmussen, STG3 Hiyane



STG3 Margolis and STG3 Moynihan pose with a friend in Bali.



STG3 Lamothe and TMZ Bessey manning the ship's self-defense force.



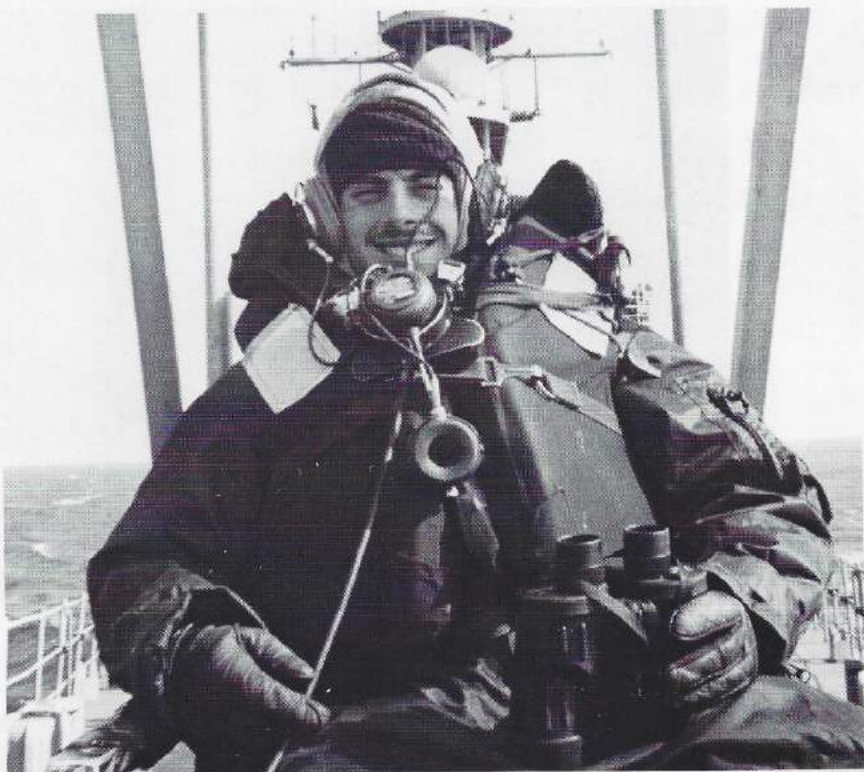
At work

And

At Play



CA division served as ship's self defense force, manning 40MM guns and watching for mines

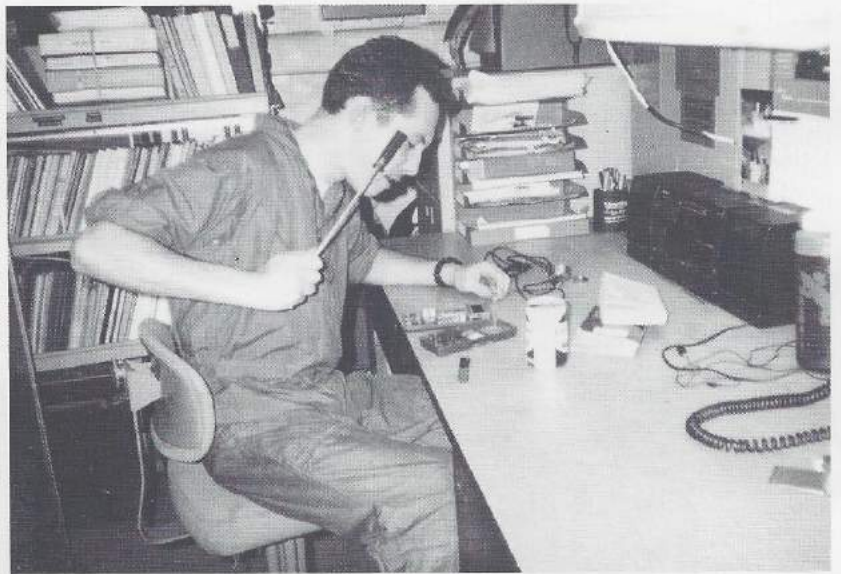
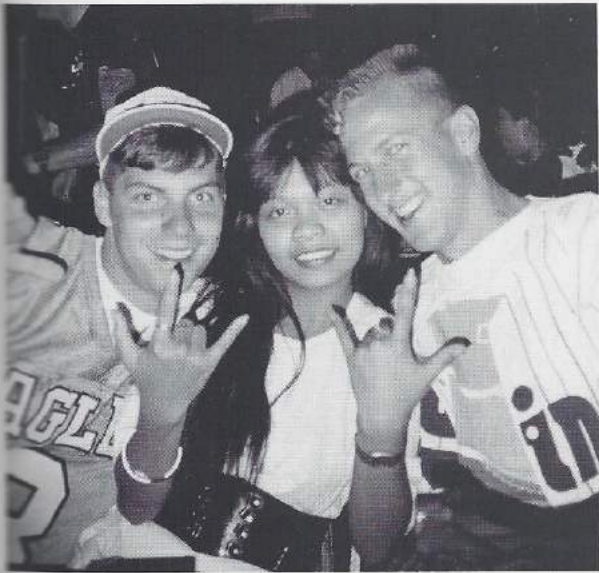


CE Division



Kneeling: ET3 Newell, DS2 Hoskins, ET1 Coker, DSC Faddis, ET1 Bayer, and DS2 Tousignant. Standing: ET3 Canady, ET2 Goodwin, DS2 Leach, ET3 Priest, and DS3 McCabe.





Top, left: ET3 Priest, DS2 Tousignant, and friend partying in Subic.

Above: ET2 Goodwin exhibiting the newest in calibration techniques.

Far Left: ET1 Bayer caught holding sweepers.

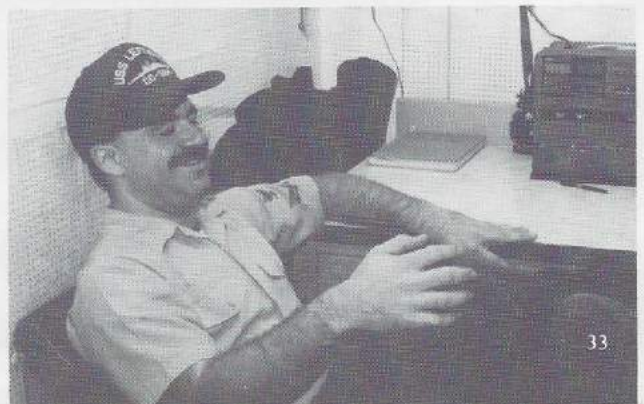
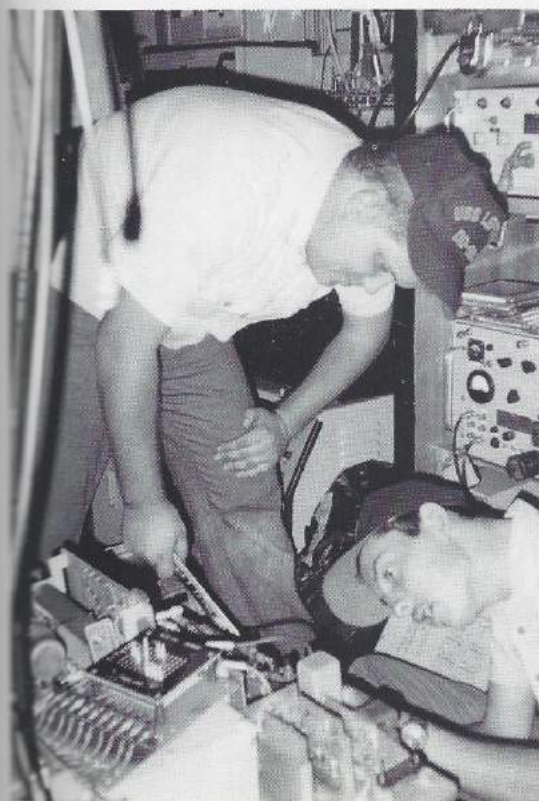


Left: Father Dunham, DS2 Widener, and ET3 Kaletta sightseeing in Bali.

Bottom, left: DS2 Widener and ET2 Goodwin trying to figure out why "It ain't working."

DS2 Hoskins and DS2 Tousignant hard at work in DPC.

Bottom, right: ET2 Culpepper kicks back and relaxes.

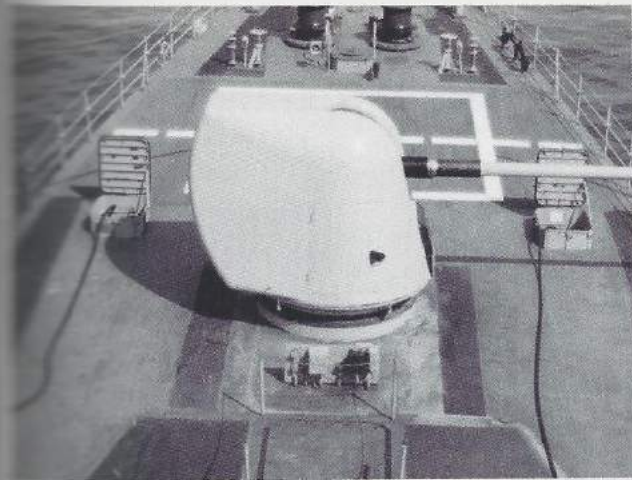


CG Division



Kneeling: GMG2 Dwyer, GMG2 Albano. Standing: GMG3 Clyde, FC2 Henke, FC3 Coley, FC3 Krouth, FC2 Emery, FC3 Santerfeit, FC2 Cook, GMG3 Kriebaum, GMC Salas. Back Row: FC3 Pinegar, FC1 Malaret, GMG2 Foster, GMG3 Zohner, FCCS Jenson.



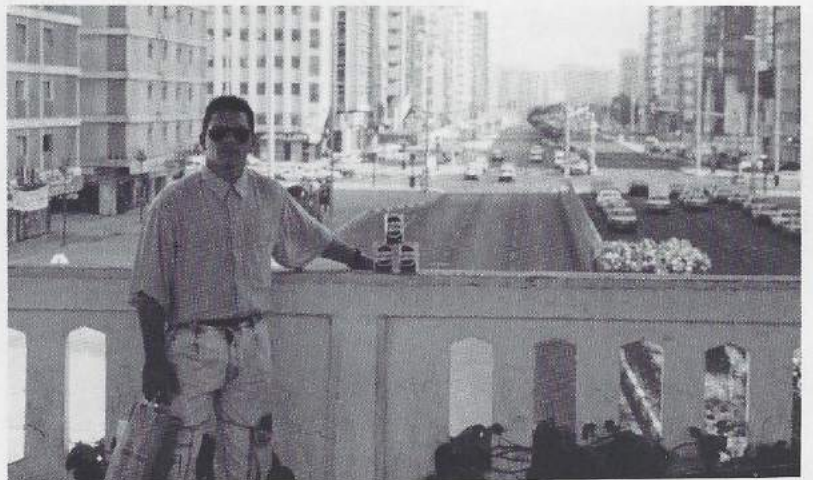


Top, right: Mount 51 trained to starboard.

Above: GMG3 Zohner and GMG2 Dwyer roughing it in Bali.

Left: FC3 Unkel at the mast-mounted sight console where he spotted a freefloating Iraqi laid mine in the middle of the night, perhaps saving LEFTWICH.

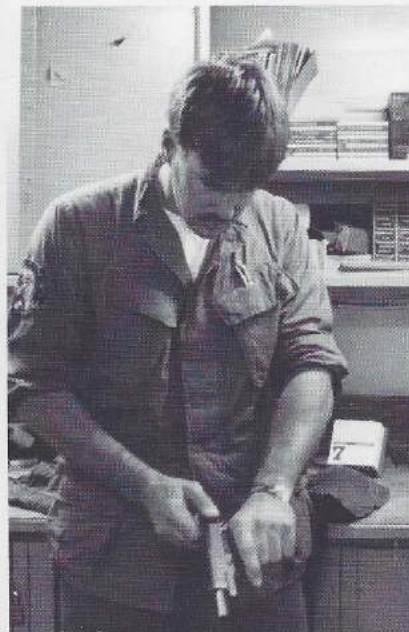
Below: GMG3 Kriebaum stops for a picture in downtown Abu Dhabi, UAE.



Above: FC2 Emery, OS2 Cahill, and FC3 Santerfeit looking the part for Wog Day.

Left: GMG2 Dwyer cleans and inspects one of LEFTWICH's .45 caliber weapons.

Far left: FC3 Santerfeit: Never a dull moment.

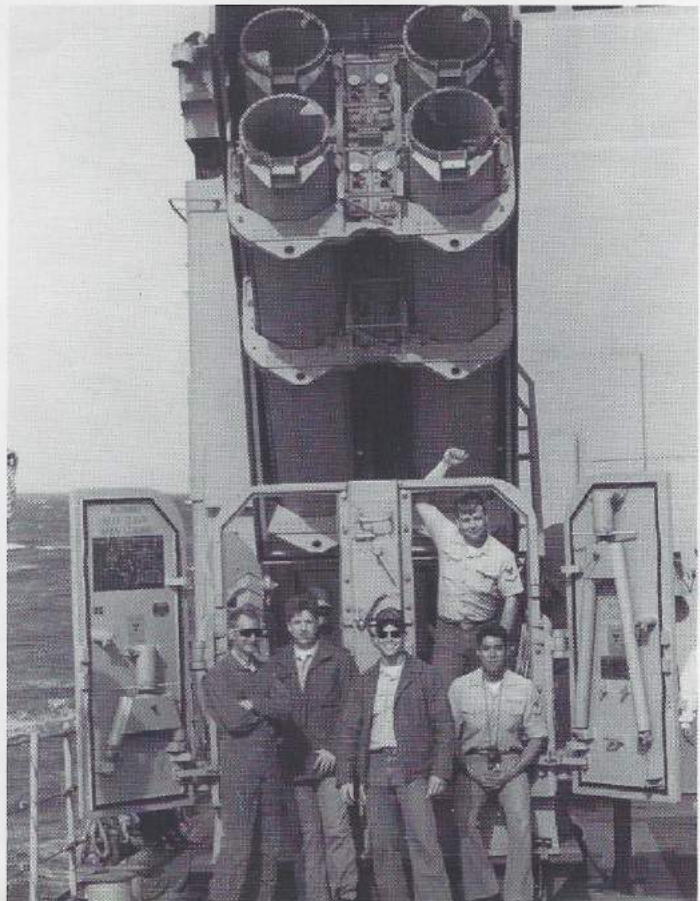


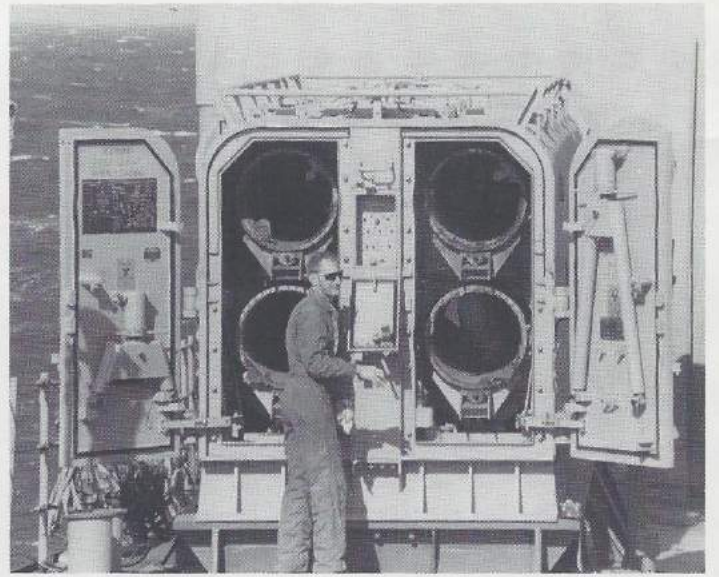
CM Division



Combat Missiles Division: (Left to Right) LT Johnson, FC3 Sikenger, FC3 Fletcher, FC2 Hildenbrandt, FC1 Barnes, FC3 Hill, FC3 Venegas, FC3 Cook, FC3 Mackey, FC3 Old Coyote Missing: FCC Rudder, FC2 Drew, FC2 Cupps, FC3 Henson Below: FC2 Cupps, FC3 Hill, FC2 Drew, FC3 Old Coyote and FC3 Mackey celebrate a successful offload, into Baghdad.

T
O
E
A
T
A
E
H





Top, left: FC1 Rutter is keeping score on the side of LEFTWICH's armored box launchers.

Above: FC2 Cupps performs maintenance on an empty ABL getting ready for a reload just in case.

Far left: FC1 Rutter, LT Smith, LTJG Anderson, and FC2 Drew look into an elevated ABL.

Left: FC3 Henson knows that even at war, you still have to take care of the little things.

Bottom, left: FC2 Hildenbrandt keeps a watchful eye on the lowly Wogs.

Below: The Tomahawkers take time for a few historical photos.



Operations Department



LT Peter R. Grause, USN

The Operations Officer is responsible for the general operations of the ship including the development of the ship's long range schedule. He is also the ship's principal training coordinator and is responsible for all deck and electronic surface warfare equipment, aviation, and communications facilities, and the proper performance of the Combat Information Center (CIC). The department is composed of four divisions: Combat Information Center-(OI), Communications (OC), Deck (OD), and Electronic Signals Warfare (OW).

OI Division is manned by Operations Specialists (OS's) who are responsible for the operation of radar detection and identifications systems, management of various external communications including intership data links, and operations in the ship's Combat Information Center.

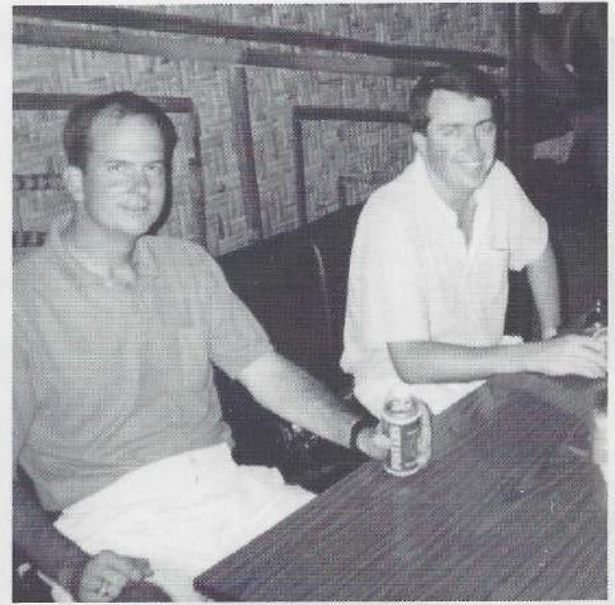
OC Division is responsible for external communication via voice, teletype, data link, flashing Light, semaphore, and signal flags. It is manned by Radiomen (RM's) who manage all electronic communications received by and transmitted from the ship, and Signalmen (SM's) who conduct visual communications.

OD Division is manned by Boatswain's Mates (BM's) who maintain the anchors, boats, mooring lines, and underway replenishment rigs. They stand bridge watches underway and man stations during various evolutions ranging from lookout to helmsman.

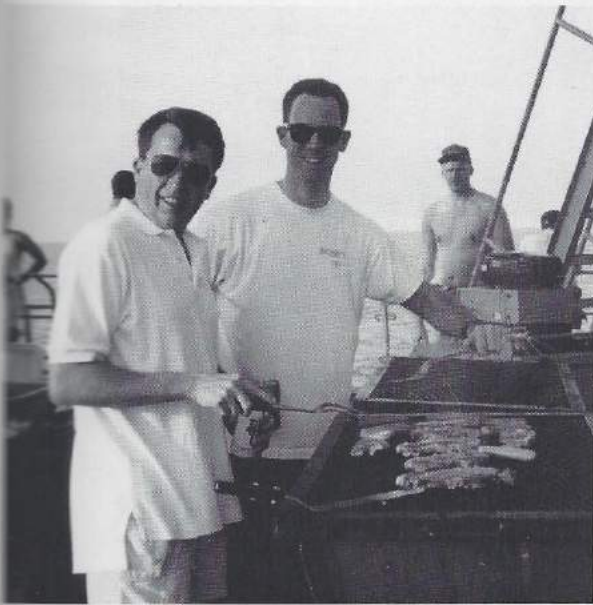
OW Division is manned by Electronic Warfare Technicians (EW's) who operate and maintain the AN/SLQ-32(V)2 Electronic Signals Warfare Systems. It is used in the detection, collection, and evaluation of electronic warfare information.



LT Grause trying to get the Cheng to relax

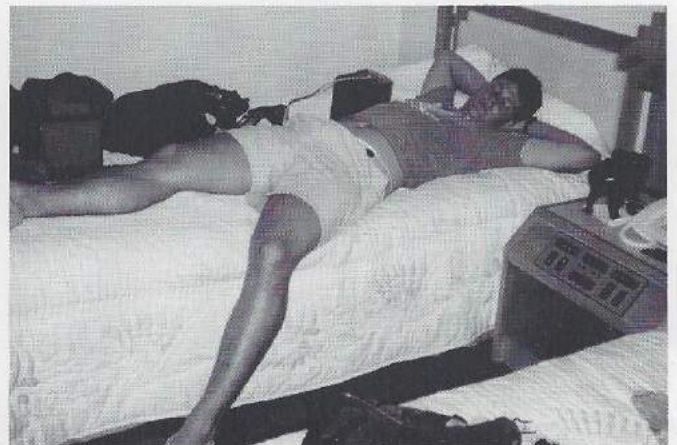


Our in house movie critic LT Grause prepares for another night of work



LT Johnson and guess who

OSCS O'Neil, "It's just like a video game"



LT Anderson gets what rides he can ... And Ens Churchill doing what he does best

OI Division



OI Division: (Kneeling Left to Right) OS2 Ferguson, OS3 McDonald, OS2 Cahill, OSSN Hale, IS1 Reese, OS2 Whitsel, OS2 Blake, OS3 Knocker, (Standing Left to Right) OS1 Stevens, OS3 McAbee, OS2 Gonzaga, OSSN Williams, OS3 Hilla, OS1 Ricks, OS2 Veach, OS2 Carter, OS3 Sharp, OS2 McCall, OS2 George, OS2 McKenzie, OS3 Bedinger, OSSN Sharp, OS3 Gallon, OS1 Clements



Electronic Warfare Specialists: EW2 Matrella, EW1 Taylor, EW2 McCune, EW2 Worthy, EW3 Gallman



EW3 Worthy, EW2 Matrella, OS2 Ferguson, OS3 McAbee, OS3 Sharp, and SN Pratt slow down just long enough for a picture in Singapore.



OS2 Carter, OSSN Crain, OSSN Nocker, OS3 Whitsell, and OS2 Blake hanging out at Hollywood and Vine.



Above: OS2 Veatch, OS3 Sharp, OS2 Cahill, and OS3 McAbee heading into Olongapo.

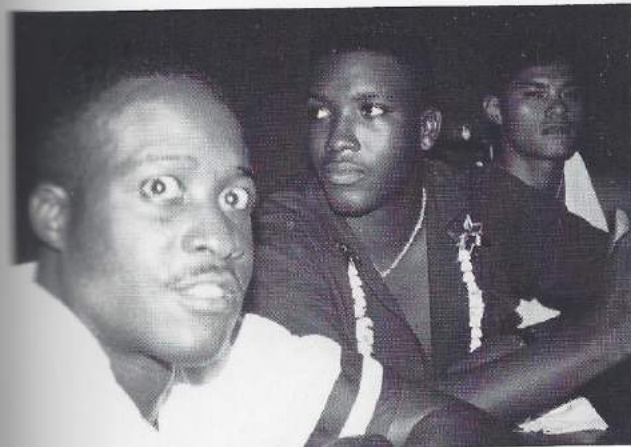
Below: OS2 Holmes, OS3 McWilliams, and OS3 Gonzaga just hangin' out.



Above: Slimy Wogs Worthy and Gallman just prior to the fun beginning.



Right: Getting ready to hit the beach.



Above: OSSN McDonald and OSSN Sharp headed for Subic for the first time.

Above, right: OS3 Sharp in his working uniform.

Left: OS3 Bias, OSSN Hale, and OSSN Nocker having a couple in Singapore.

Right: SN Pratt, OS3 McAbee, OSSN Hale, OSSN Nocker, EW3 Worthy, and OS2 Ferguson hittin' the streets of Singapore.





EW3 Worthy, EW2 Matrella, OS2 Ferguson, OS3 McAbee, OS3 Sharp, and SN Pratt slow down just long enough for a picture in Singapore.



OS2 Carter, OSSN Crain, OSSN Nocker, OS3 Whitsell, and OS2 Blake hanging out at Hollywood and Vine.



Above: OS2 Veatch, OS3 Sharp, OS2 Cahill, and OS3 McAbee heading into Olongapo.

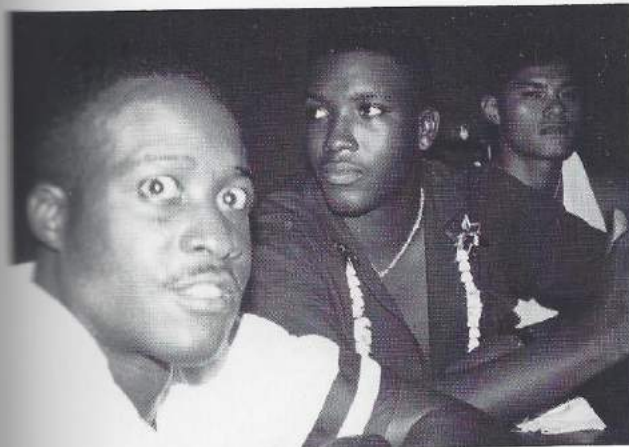
Below: OS2 Holmes, OS3 McWilliams, and OS3 Gonzaga just hangin' out.



Above: Slimy Wogs Worthy and Gallman just prior to the fun beginning.



Right: Getting ready to hit the beach.



Above: OSSN McDonald and OSSN Sharp headed for Subic for the first time.

Above, right: OS3 Sharp in his working uniform.

Left: OS3 Bias, OSSN Hale, and OSSN Nocker having a couple in Singapore.

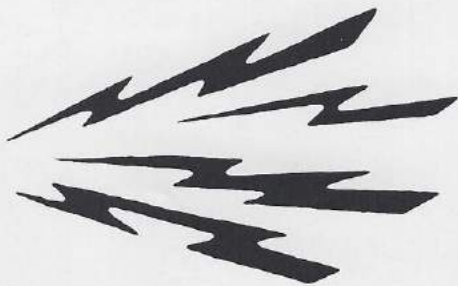
Right: SN Pratt, OS3 McAbee, OSSN Hale, OSSN Nocker, EW3 Worthy, and OS2 Ferguson hittin' the streets of Singapore.



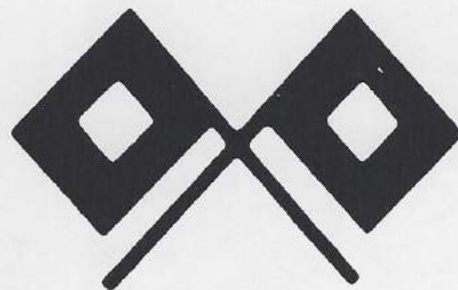
OC Division



Operations Communications Division is (Left to Right, front to back) RMSN Weiler, SMSN Mata, Ens A-Z, RM2 Tidwell, RM2 Nagal, SM2 Knox, RM3 Howard, RM2 Thomas, RMSN Quast, RM3 Consolver, RM2 Wade, RM3 Krause, SM2 Wise



Radioman



Signalman



Signalmen are the primary lookouts on board and were critical to identifying merchant ships during Desert Shield.

Above: RMSN Qaust, "WOW, I've never been in one of these here helicopters before."
Right: Coming home.



Below: SM2 Wise and SM2 Knox taking down a message the old fashioned way



OD Division

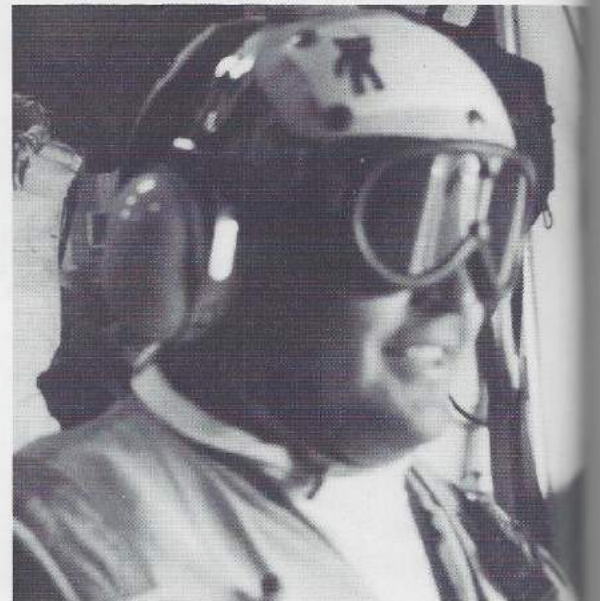


Operation Deck Division is (Standing Left to Right) BMC Powell, BM3 Patterson, SN Hairston, SN Green, SN Peralta, SN Becton, SN Williams, SN Weber, SN Boxleitner, BM2 Coleman, SN Zastrow, BM2 Elsken, SN Bethke, SN Dzeskewicz, SN Jones, G.F., SN Pratt, SN Clark, SN Ster, BM1 Marier, (Kneeling Left to Right) BM3 Velasquez, BM1 Peralez, BM3 Dawson, BM3 Ciak, SN Jones, J.R., SN Vespo, BM3 Nunez



Hauling the phone and distance line during UNREP is SN Littlejohn, BM3 Patterson, GSE3 Bui and SN Peralta

BM1 Peralez LSE extraordinaire, and Gum...

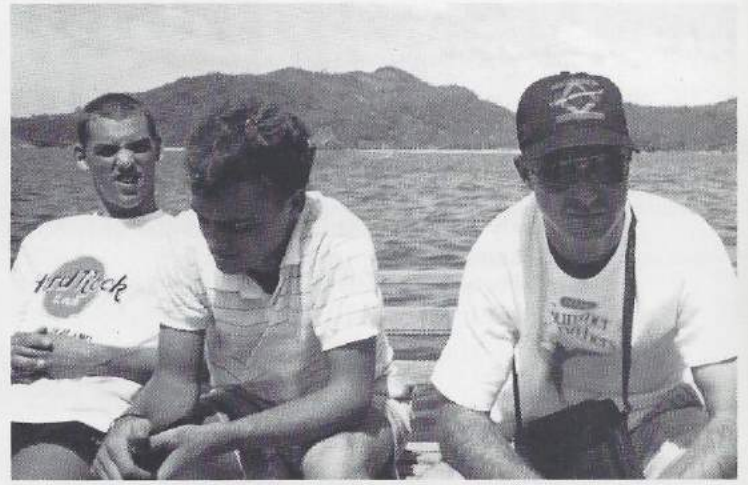




Above: More wog day frivolities

Left: Lowering the Captain's Gig

Right: BM2 Rayl, Watching as Leftwich takes on fuel



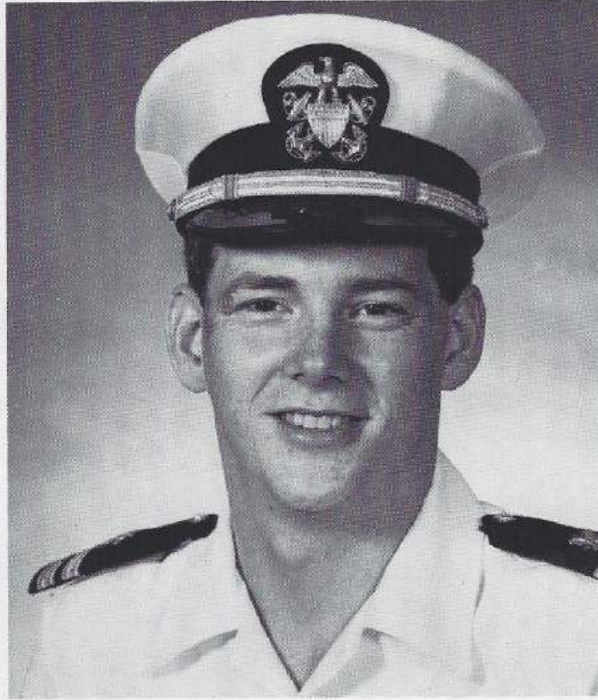
Above: Deck Div's winning entries to the Queen and Dog show

Above Right: SN Yost, BM3 Jansen and BM2 Rayl head for the beach

Best: The guys who kept all the UN-REPs and CONREPS safe

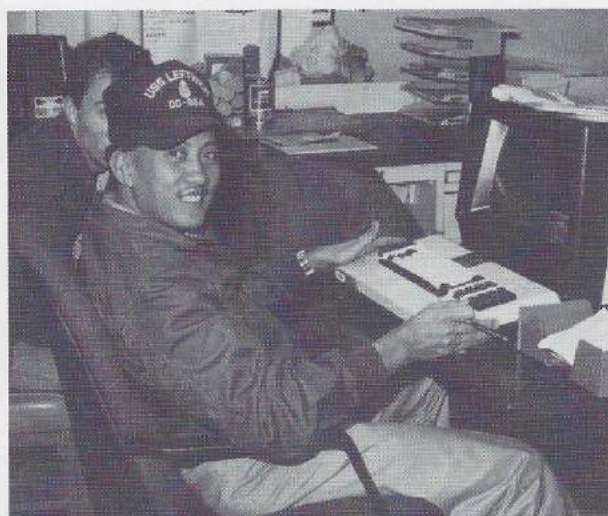


Supply Department



LT Terence S. Purcell, USN

Supply Department has the responsibility of not only feeding the crew, but also run the laundry and ship's store, handle all pay matters, and provide parts support for all on board equipment. Ratings include MSs, SKs, SHs, and DKs. During the Gulf deployment they also served as members of the ship's self defence force. The Supply Officer is LT Terry Purcell.



Above Left: Supply Department gets together for a few photos in Jebel Ali.

Above: MSC Navarro ensures the crew gets nothing but the best.

Far Left: DirectDeposit Man.

Left: SKCS Mendoza looking for parts.

Below Left: These guys keep it running.

Below: LTJG Iliakis counting his money.

Bottom: SK1 Manibog, SK2 Simpson, and SH2 Remolano taking a break.



Supply Groups

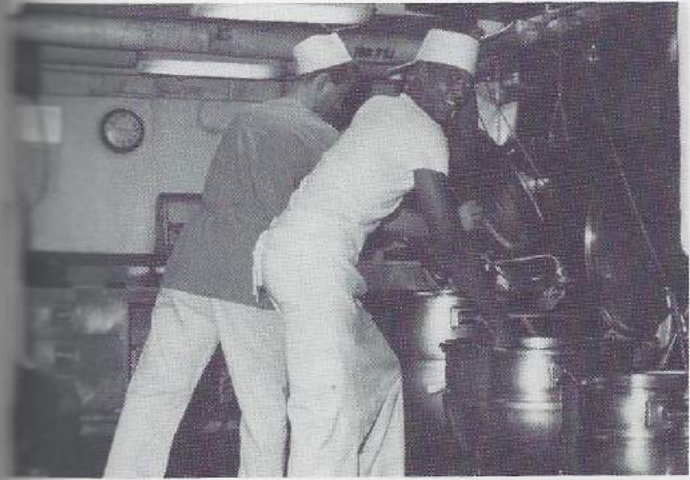


Supply Department (Standing Left to Right) MSC Navarro, SH1 Nowicki, MSSA Elliot, DK1 Houser, MS2 Lawton, SH3 Hussain, MS3 Trabue, LT Purcell, SK2 Ganther, ENS Iliakis, SK2 Coar, MSSA McCallum, SKSN Brown, SK3 Stark, SKCS Mendosa, SH1 Doty, (Kneeling Left to Right) MS1 Hefner, SH2 Remolano, DK2 Wheeler, SK2 Simpson, SH3 Roof, MS2 Montanez, SK1 Manibog, MS3 Munro, MS2 Abuluyan

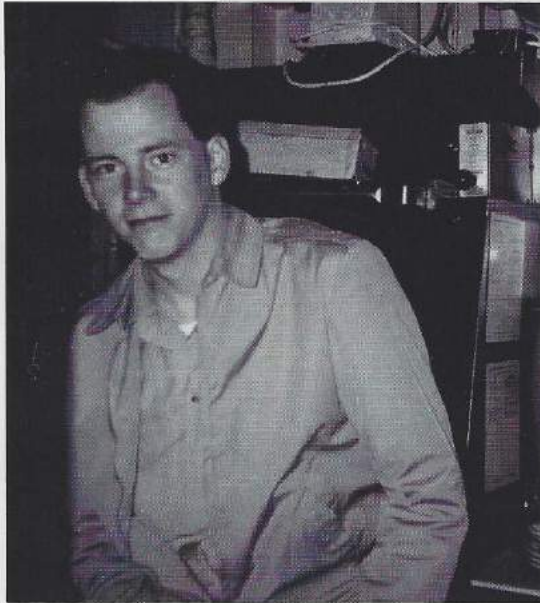
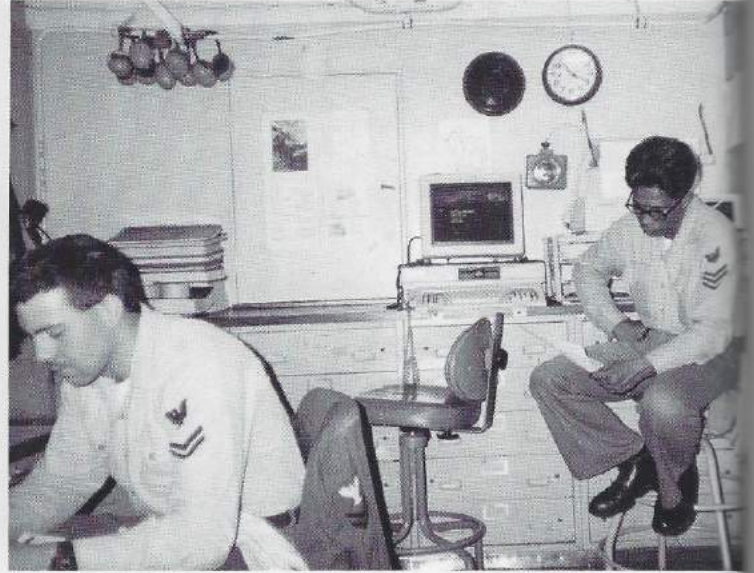


Just the Store Keepers (Standing Left to Right) SKSN Brown, SK2 Ganther, SK3 Stark, SK2 Coar, (Kneeling Left to Right) SK2 Simpson, SK1 Manibog, SKCS Mendosa

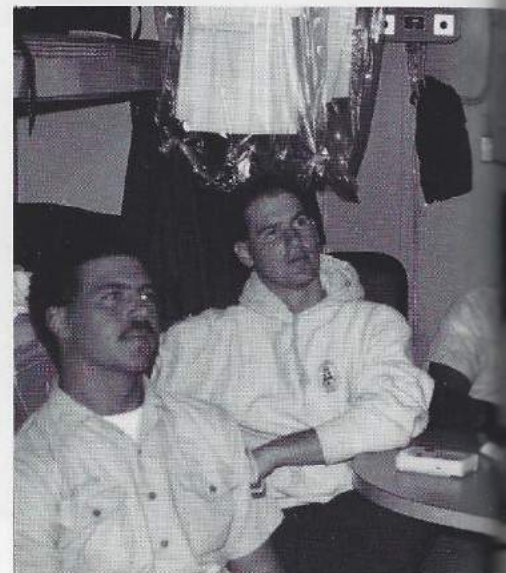
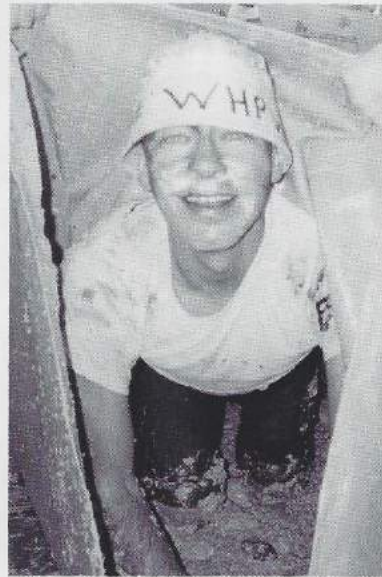
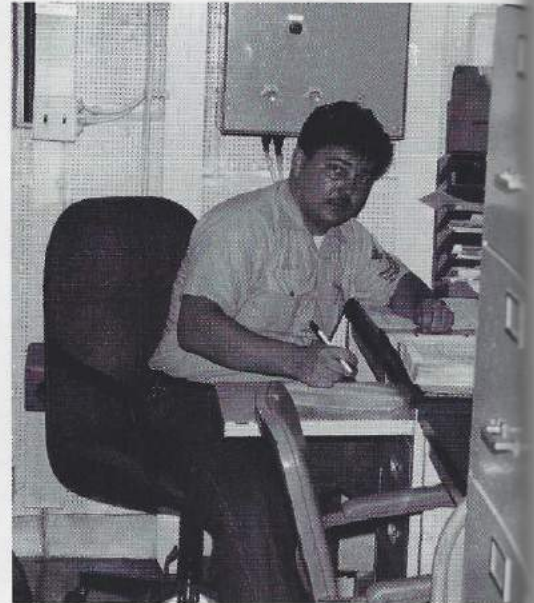
Food Service

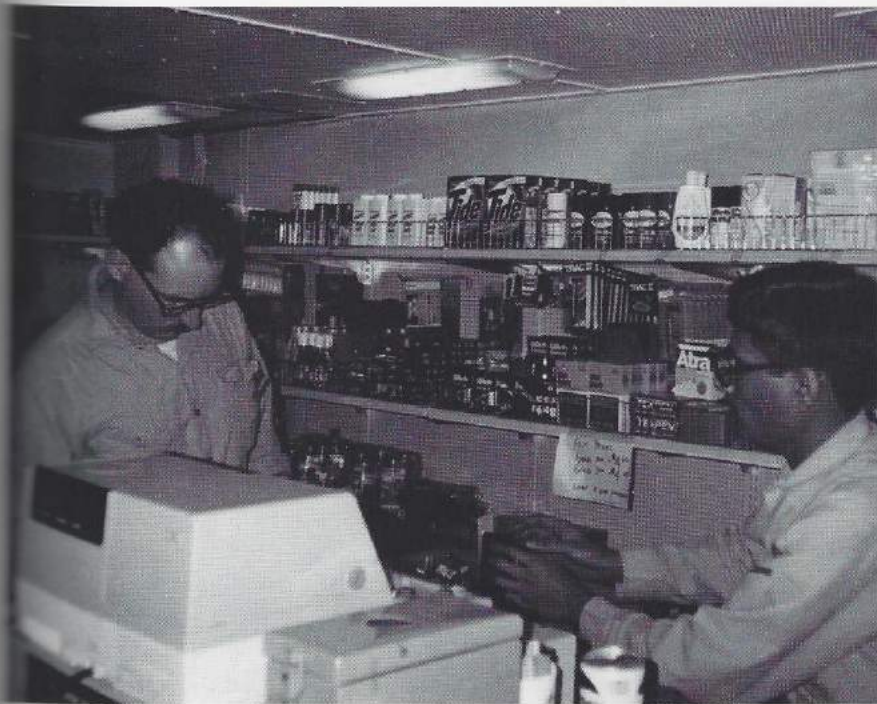


Supply



Clockwise from top: GMM1 Smith showing uncommon valor, SK1 Manbog looking for a part, MS1 Hefner caught in a rare moment of work, the gang watching a flick, just a wog, PMS never ends, Suppo looking dapper

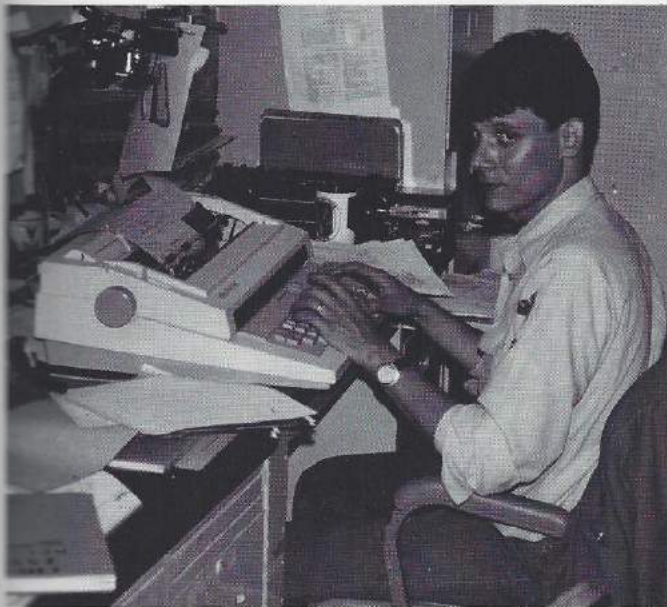




SH3 Hussein kept the store open through everything but field days

Top Right: Never too busy to whack a wog

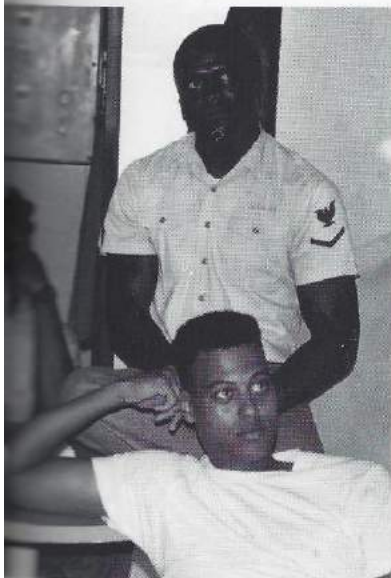
Below: SK2 Simpson mans the 25MM chain gun



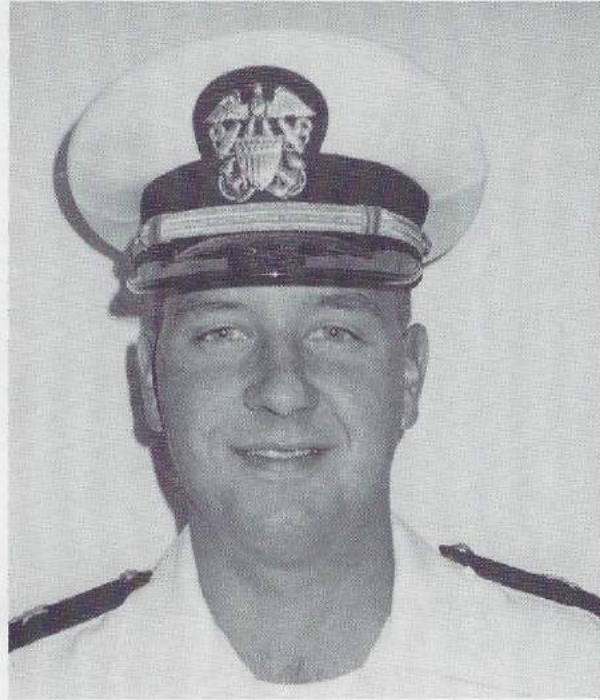
Above: DK1 Houser working to get everyone a paycheck

Right: Workout animals

Below: DK1 Houser taking a pre-bowling sobriety test



Nav/Admin Department



LT David F. Foster, USN

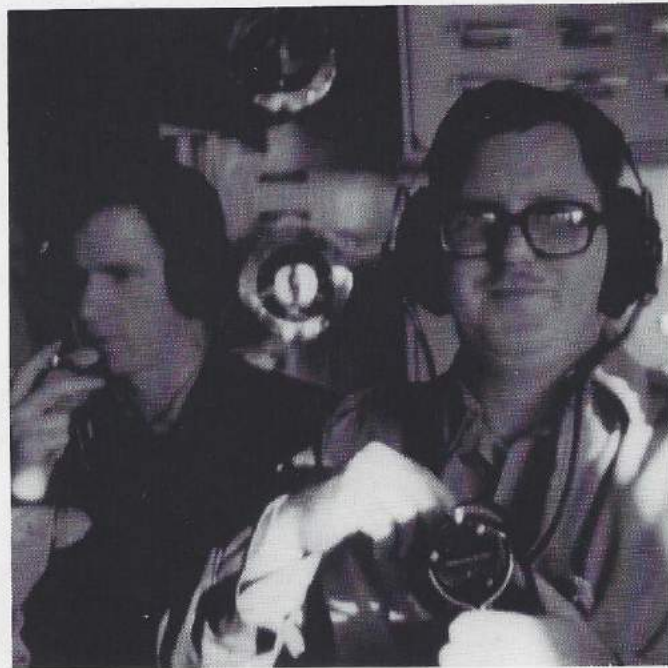
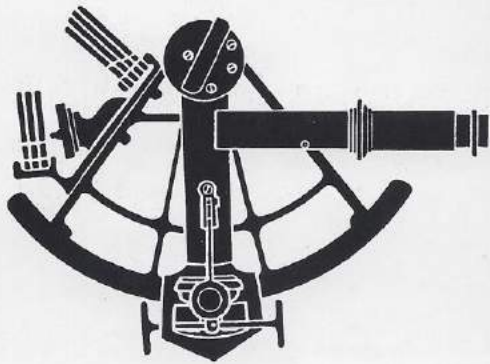




The Navigator, LT Foster, having a beer ...

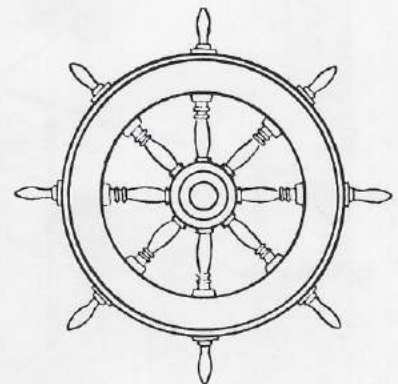


And getting lost on the bus.



Chief Stype mans the phones during nav detail

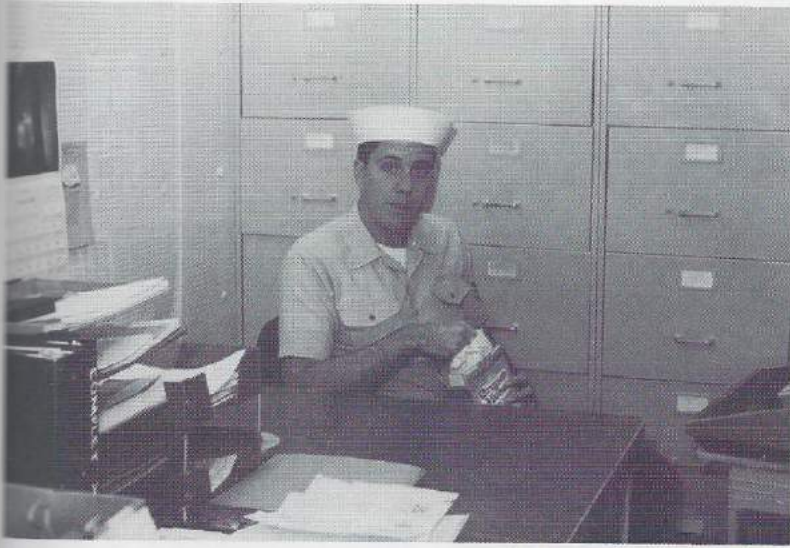
When it came to carrying mail, there was never a shortage of volunteers



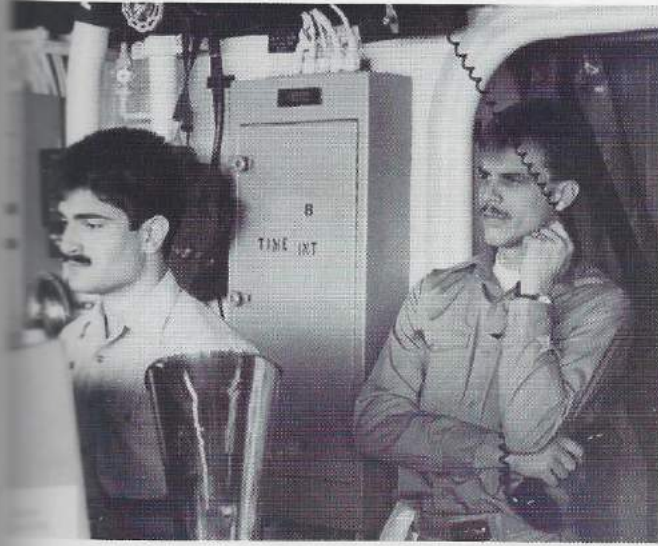
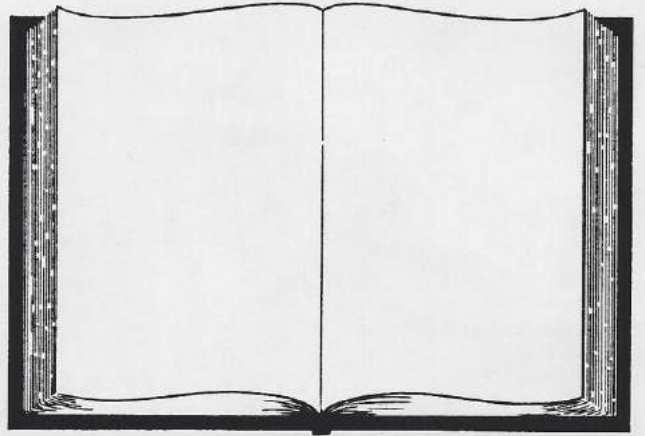


NX Division: Top Row: PN1 Carty, MAC Crawford, HM2 Schnaupfer, FCCM Ashenfelter, STC Vollstedt, QMC Stype Bottom Row: QMSN Martin, NC1 Porter, QMSN Rodrigues, YN3 Grandberry, HM1 Clark, YN3 Mabone

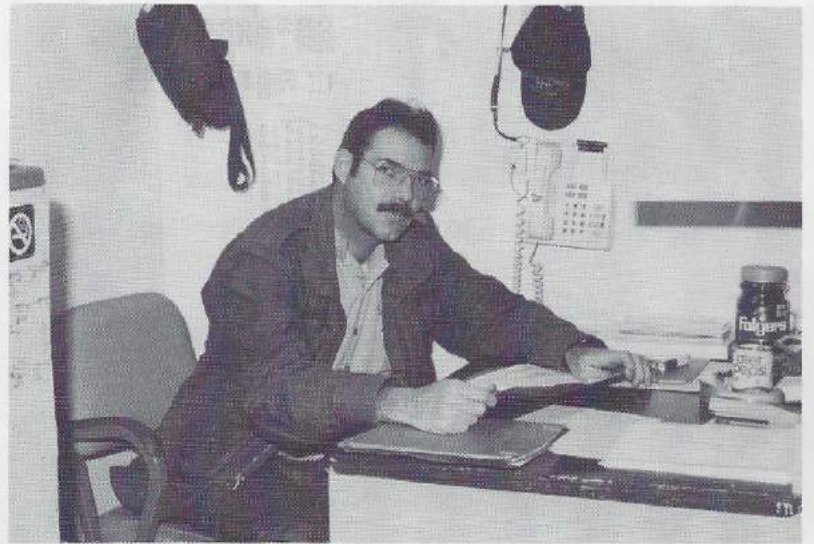




PN1 Carty takes a break from the typewriter wars



QM2 Mengarelli steers during an UNREP while Ens A-Z watches



YN1 Manning, wishing perhaps that war stopped paperwork



QMSN Martin giving instruction to CCS



HMI Clark to the rescue

HSL-37 Detachment 5

OIC



LCDR Terry Druffel, USN

F
L
E
X



HSL-37 Det 5 under the command of LCDR "Flex" Druffel logged thousands of safe flying hours under the most hazardous conditions, although at times the stress seemed to get to Flex.





LT Turner thinking a bit beyond the moment at hand

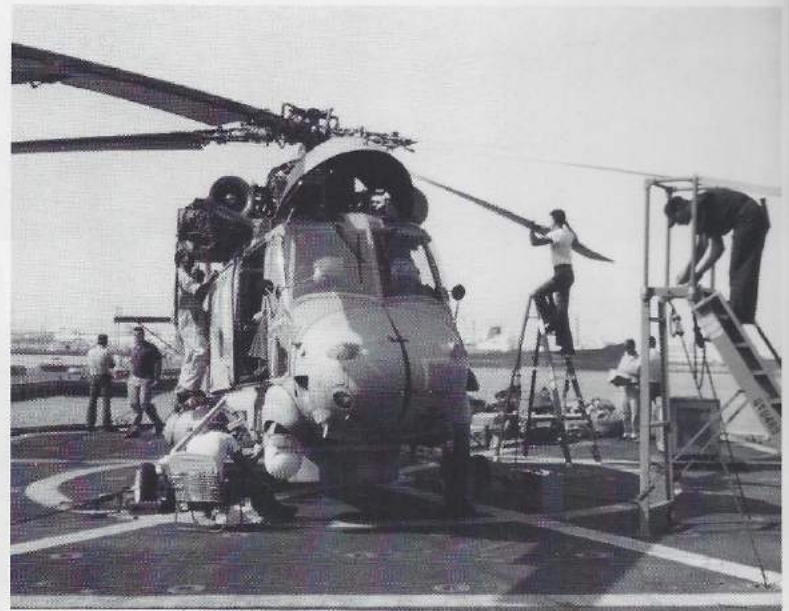
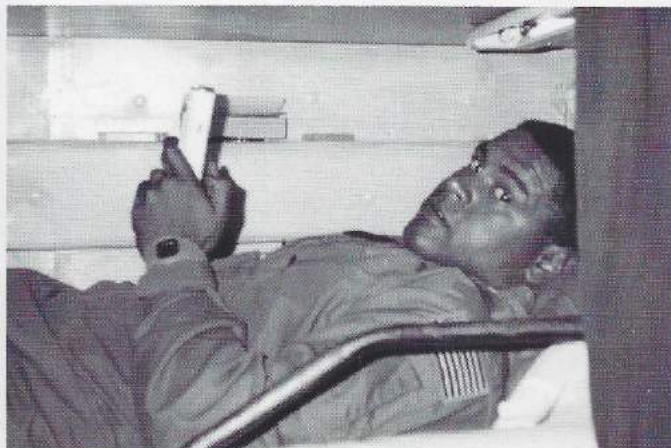


No bar too far, no beer too cold



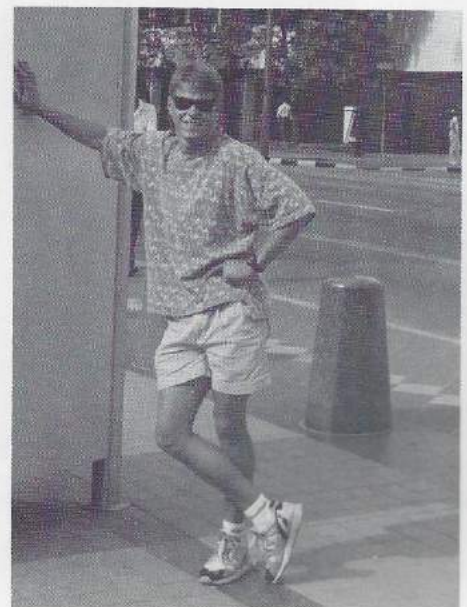
Would you want this guy working on your helo?

LT Eddy Reed assures us that GameBoy improves a pilot's reflexes, really



The techs are the ones who kept the birds flying

LT Greg Ralston on the town



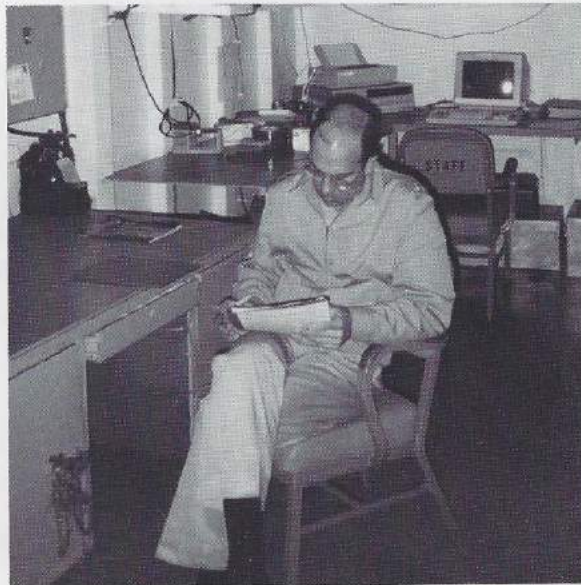
Destroyer Squadron 35



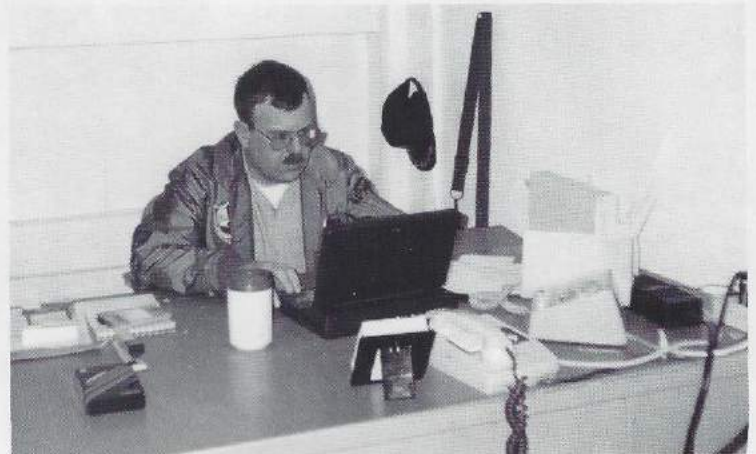
Desron Staff: Left to Right MMC Hesse, MS Roberts, LCDR Lehue, LCDR Bowdish, LT Nielan, Chaplain Brown, OSC Martin, RCMC Rangal, HMCS Delaney, CDR Ketchum, LCDR Gallagher



Above: Commodore Putnam addresses the crew

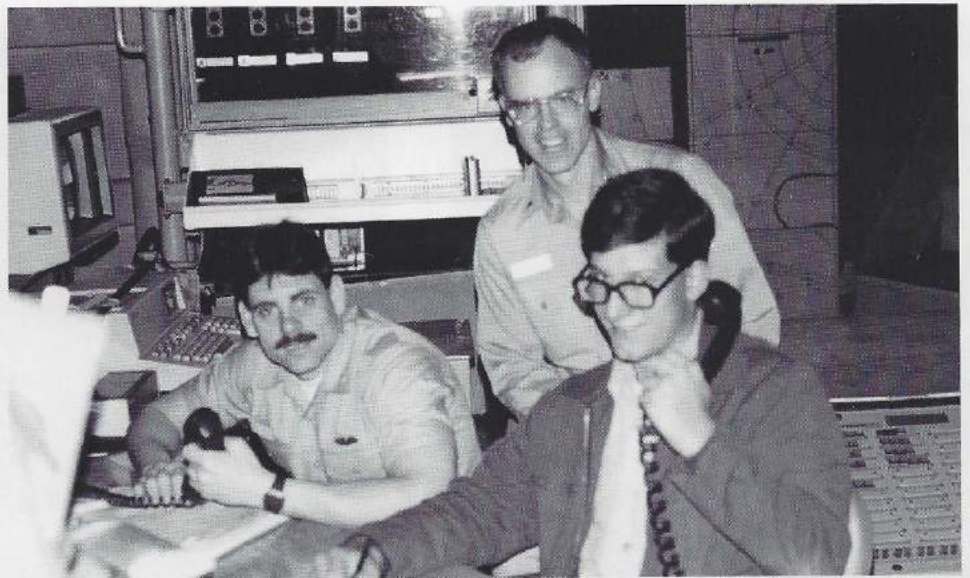


Chief of Staff CDR Ketchum





Chaplain Brown prays for pizza



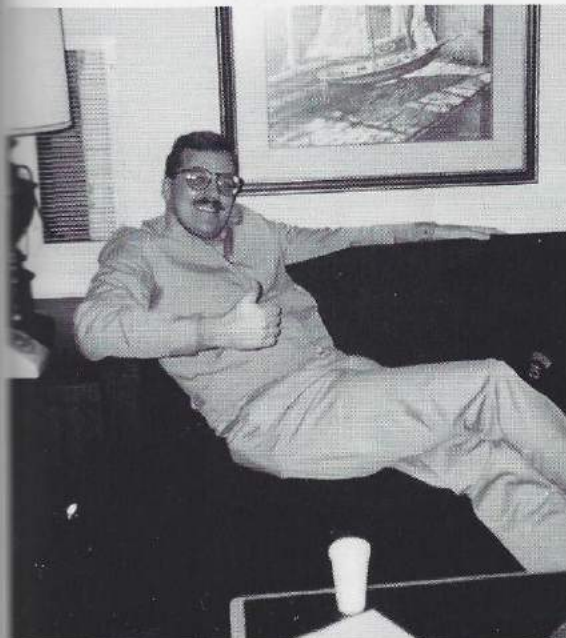
You're not dealing with ATT



Commander Ketchum and the XO talk about sweepers



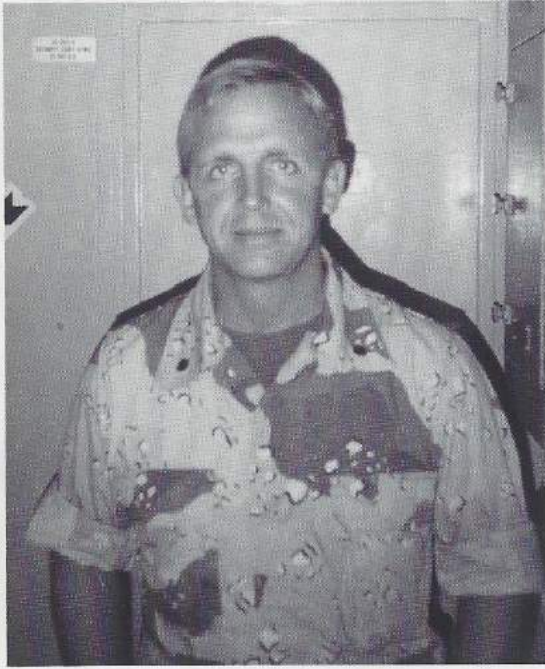
Commodore Putnam, congratulates LTJG Mike Kunkel for attaining his surface warrior qualification



Above: Taking a break from the war, Commodore Putnam celebrates a birthday

Left: LCDR Bowdish assumes the staff position, why is this man smiling?

Detachments



CDR Olson Seal Team One



HS-12 Spearguns

CO, HS-12 Spearguns



The S-3 Dets did everything from carrying cargo to destroying mines



CDR Roulstone





LCDR Mothershead was our senior medical advisor for the combat search and rescue mission.

The support team for EasyRider 62



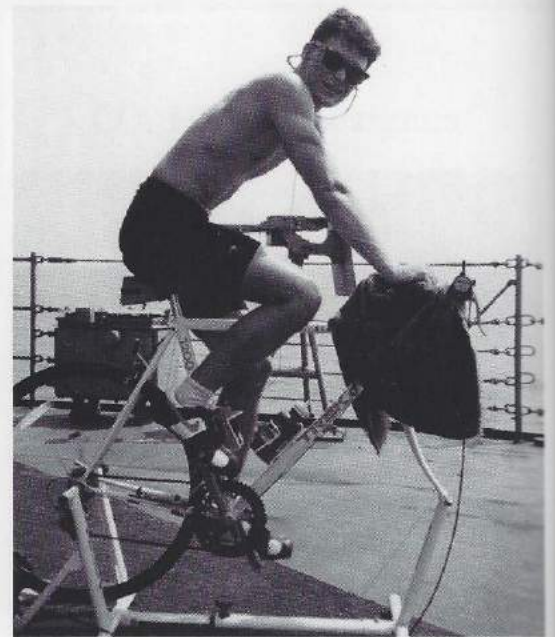
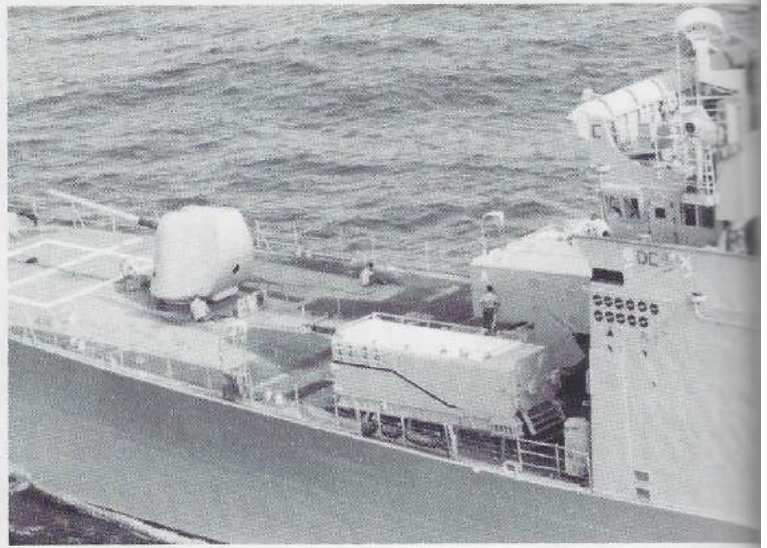
Coast Guard LT Teak "Papa Sar" Williams. Expert on search and rescue from the shallow water navy.

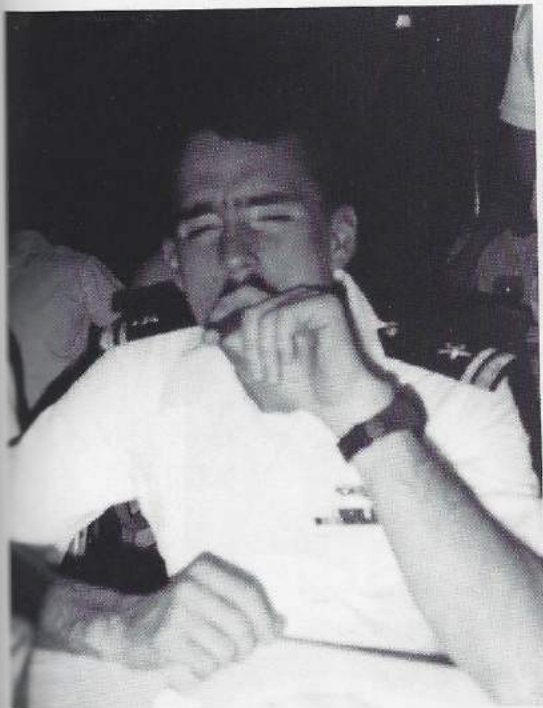
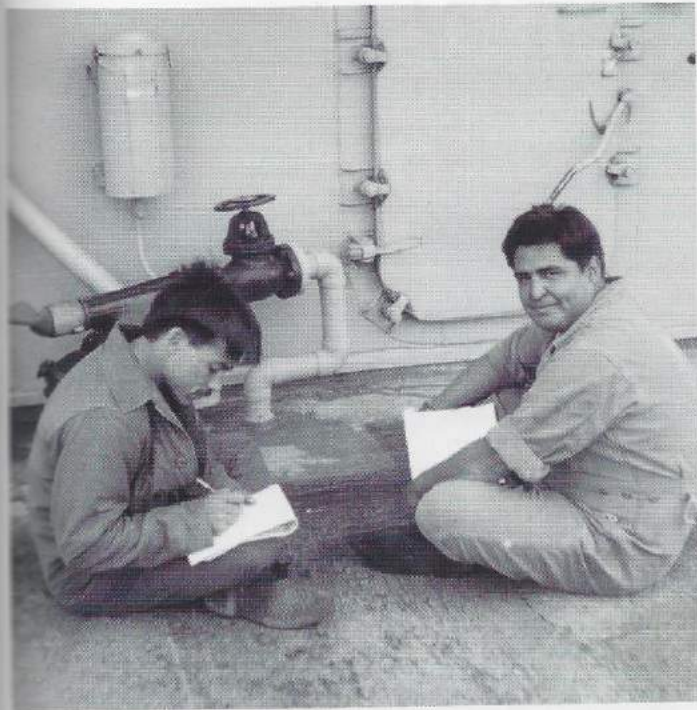


NAVAL AVIATOR

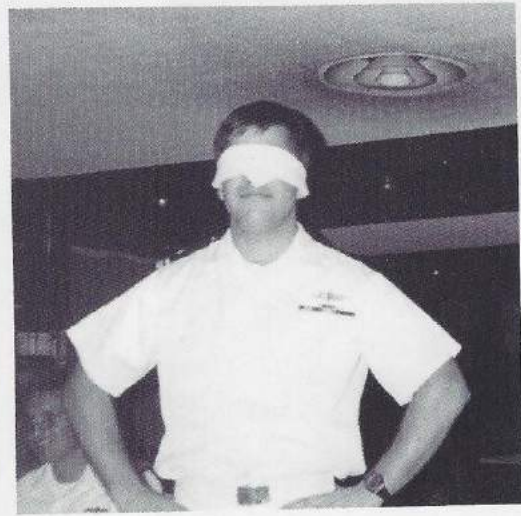
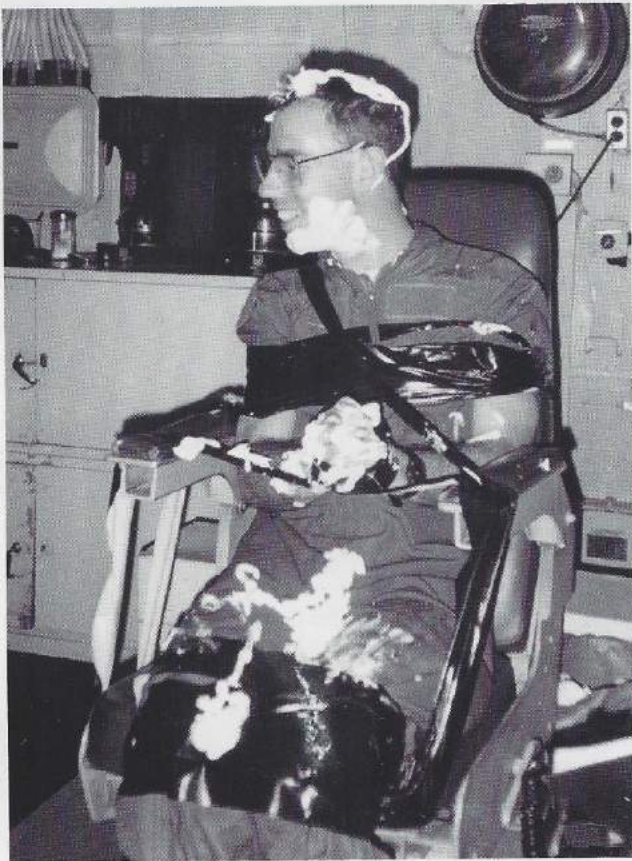
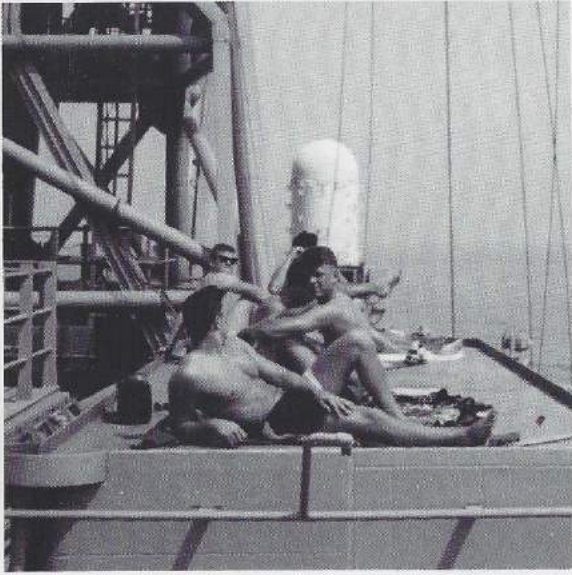


Snapshots

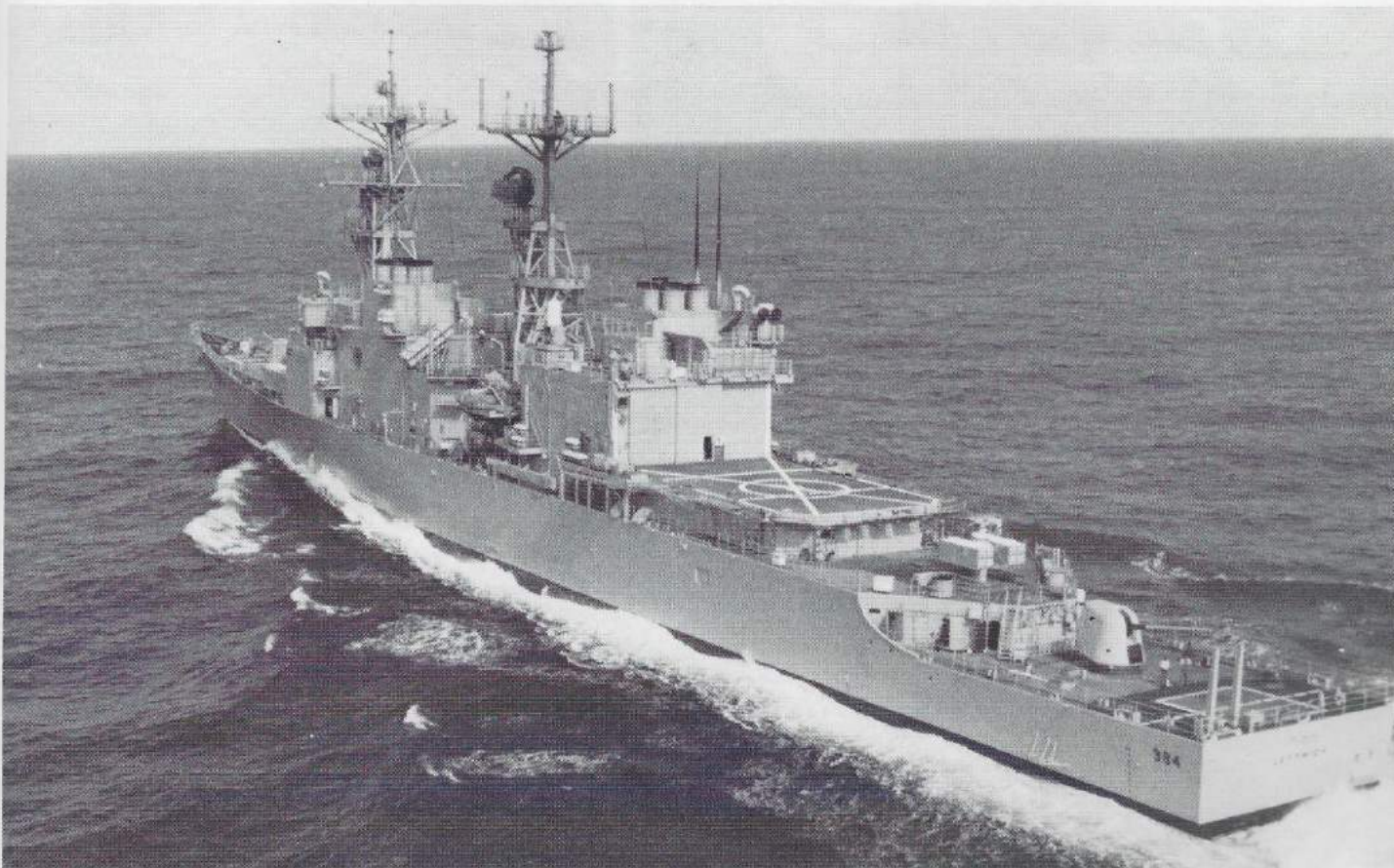




Images

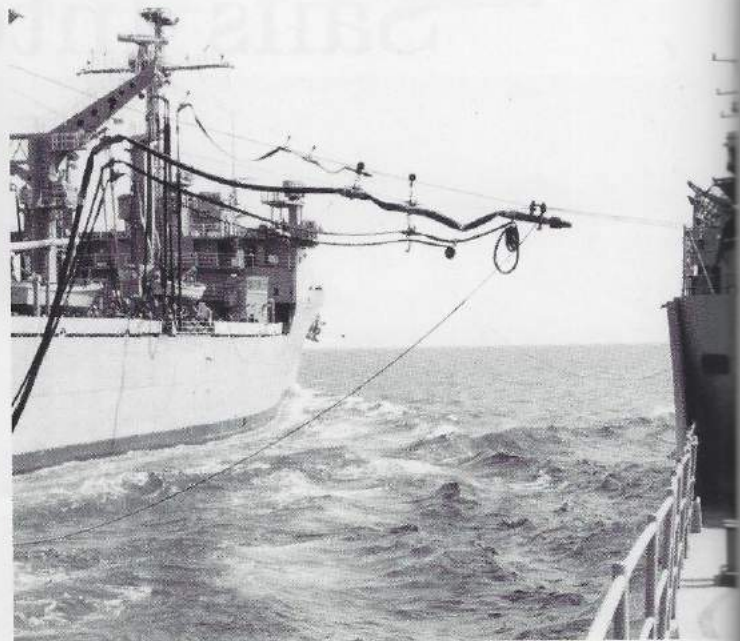
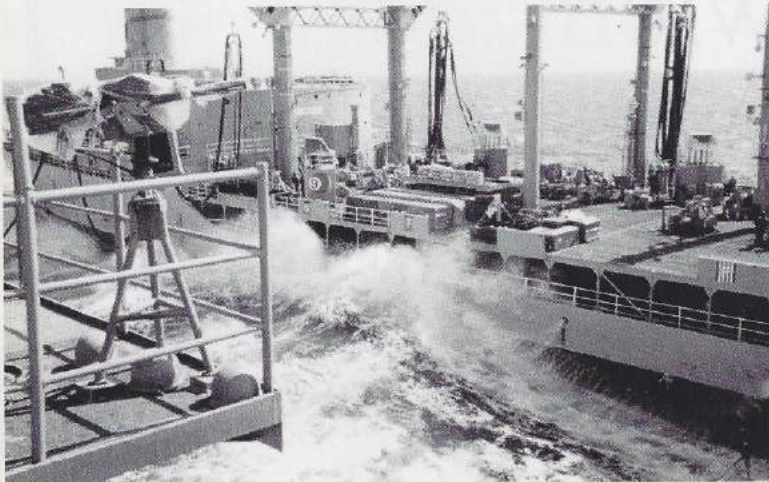
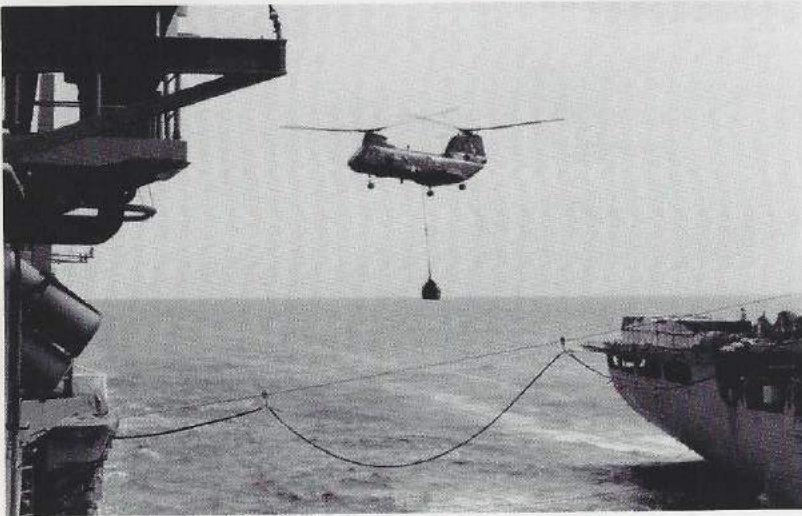


Westpac 1991

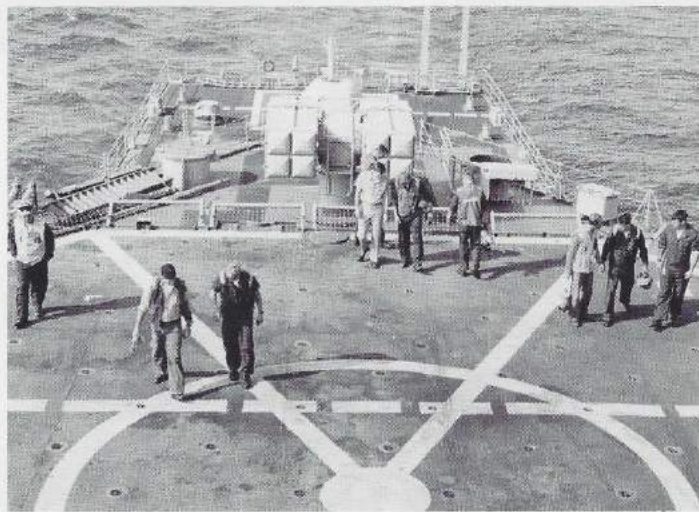


Leftwich Sails Into History

Replenishment At Sea



Flight Quarters



Leftwich operated all kinds of helicopters, all with different capabilities, during Desert Storm and Shield. They all had one thing in common though, they all required round the clock support from the Flight Deck Crew. Clockwise from top left: DC2 Sparks, BM2 Peralta and their hero, Easyrider coming home, FOD walkdown, British Lynx, Saberhawk using FWD vertrep, DC3 Waters in crash position, Easyrider taking on fuel, H-46 getting some gas



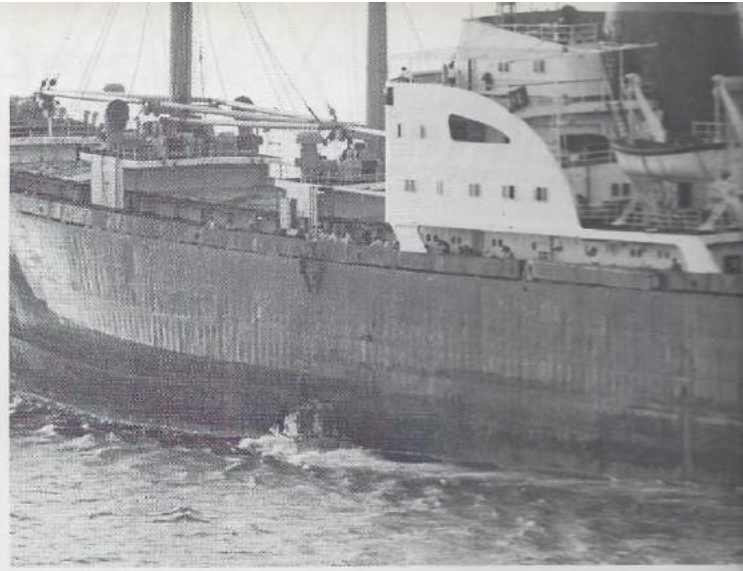


Leftwich's mission during Desert Shield was maritime interdiction. During Desert Shield Leftwich conducted over 200 maritime intercepts while in support of UN resolution 660. Helping out were embarked AHIP's and S-3 helicopters.

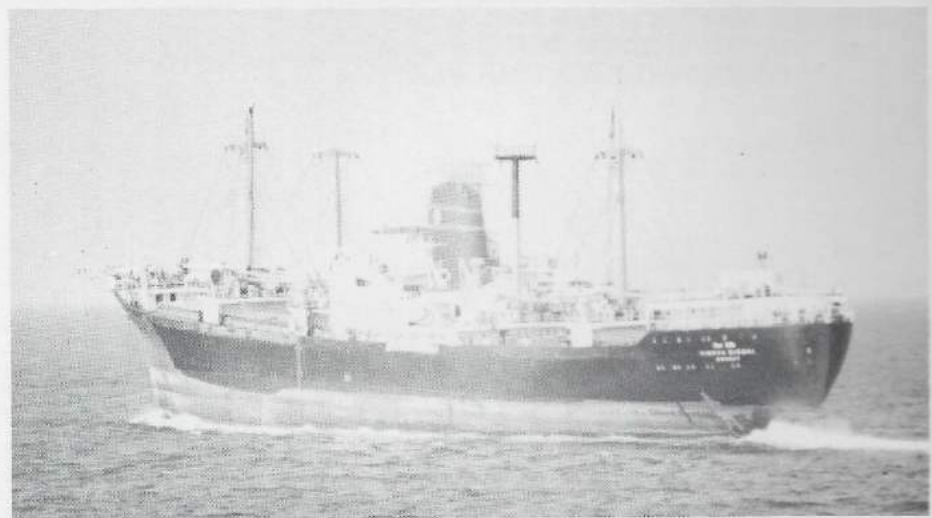
O
p
e
r
a
t
i
o
n



Desert Shield



The Visit, Board, Search and Seizure Team got a chance to put their training to use during the boarding of the Vishna Siddhi. They verified that the cargo wasn't contraband and provided assistance to passengers that required medical attention. The VBSS team included members of the coast guard and a squadron doctor. Leftwich members left to right: FC1 Emery, LT Grause, LT Holmes, FC2 Cook, LT Johnson, FC2 Henke, GMG2 Dwyer.



Operation

To say that all of us are proud of your outstanding performance during operations Desert Shield and Desert Storm would be an understatement. Despite the incessant pressure, danger, and challenge of being continuously on the "Cutting Edge" of offensive operations in the Arabian Gulf, you acquitted yourselves with courage and unfailing professionalism.

RADM W.A. Earner
COMNAVSURFGRUMIDPAC

As your deployment draws to a close and you head for Pearl Harbor, my best wishes go with you for a continued safe voyage and a joyous reunion with family and loved ones. You have been in the thick of the action since your arrival in the middle east. From start to finish, your performance in meeting every challenge has been superb. As a flagship and as a combatant at the point of the sword, you must take credit for much of the stunning success that was operation Desert Shield/Storm. You have my congratulations and thanks for a job well done.

VADM S.R. Arthur COMUSNAVCENT

As you depart the Arabian Gulf let me extend a personal congratulations and farewell to you. Your performance in the Northern Arabian Gulf with COMDESRON 35 embarked and as a primary tomahawk strike platform contributed significantly to the final outcome of this conflict. Your service at the point was a shining example of how to fight a ship. You should be justifiably proud of your efforts and I salute each and every one of you. We have shown the world what we are made of and you are at the heart of that impression. Fair winds and following seas.

RADM D.P. March CTF ONE FIVE ONE

The only consolation in watching you sail from Bahrain was the knowledge that I will see this great ship again soon at home in Hawaii. The shopworn superlatives fall short of describing my appreciation and respect for the performance of ship and crew during the war. You can be content in the knowledge that when the time came, your diligent preparation resulted in the finest performance any ship anywhere could have rendered.

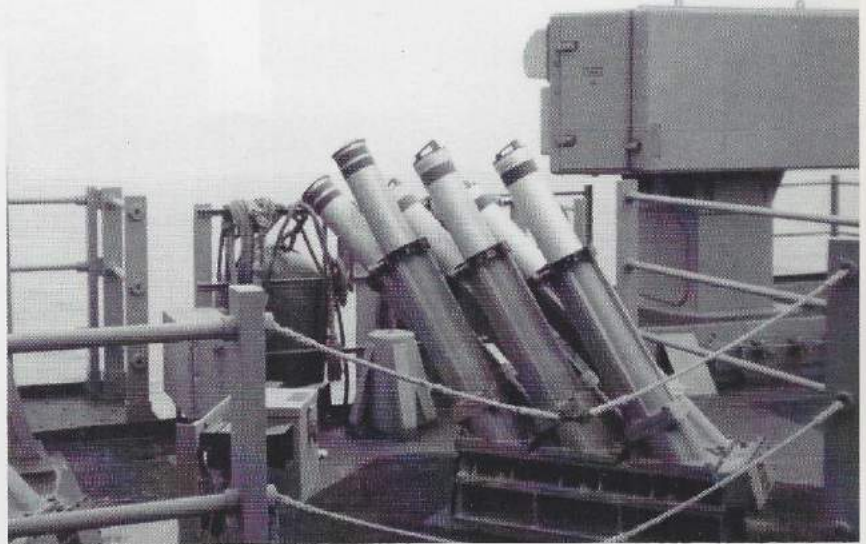
CAPTAIN W.L. Putnam COMDESRON
THREE FIVE

Desert Storm

USS LEFTWICH (DD-984), WITH HELICOPTER ANTI-SUBMARINE SQUADRON THREE SEVEN DETACHMENT FIVE EMBARKED, WILL RETURN TO PEARL HARBOR ON 11 APRIL 1991 AFTER A FIVE AND ONE HALF MONTH DEPLOYMENT TO THE ARABIAN GULF WHICH BEGAN ON 30 OCTOBER 1990. ARRIVING IN THE GULF ON 4 DECEMBER 1990, LEFTWICH OPERATED FOR CONTINUOUS DAYS AS A MEMBER OF MIDDLE EAST FORCE AND BATTLE FORCE ZULU WITH COMMANDER, DESROYER SQUADRON THIRTY FIVE EMBARKED. DURING OPERATION DESERT SHIELD LEFTWICH CONDUCTED OVER 200 MERCHANT SHIP INTERCEPTS AND ONE BOARDING IN SUPPORT OF THE UNITED NATIONS EMBARGO AGAINST IRAQ SUBSEQUENT TO THE IRAQI INVASION OF KUWAIT. ON 17 JANUARY 1991, LEFTWICH WAS ONE OF THE FIRST SHIPS TO LAUNCH TOMAHAWK MISSILES AGAINST TARGETS IN IRAQ AS THE OPERATION DESERT STORM OFFENSIVE BEGAN WITH HISTORY'S FIRST TOMAHAWK POWER PROJECTION STRIKE. LEFTWICH WAS FARTHEST NORTH IN THE ARABIAN GULF OF ALL TOMAHAWK STRIKE SHIPS MAKING HER THE FIRST TARGET FOR ANY EXPECTED IRAQI RETALIATORY STRIKE. IMMEDIATELY THEREAFTER LEFTWICH PROCEEDED FURTHER NORTH TO BE IN OPTIMUM POSITION TO SUPPORT FOLLOW-ON AIRCRAFT CARRIER STRIKES AS THE PRIMARY COMBAT SEARCH AND RESCUE SHIP FOR DOWNED PILOT RESCUE. TO SUPPORT THIS MISSION LEFTWICH HAD TWO SH-3 HELICOPTERS EMBARKED FROM USS MIDWAY'S HELICOPTER ANTI-SUBMARINE SQUADRON TWELVE AND USS THEODORE ROOSEVELT'S HELICOPTER ANTI-SUBMARINE SQUADRON NINE, A SEAL PLATOON FROM NAVAL SPECIAL WARFARE GROUP ONE, A MEDICAL RESCUE TEAM AND A COAST GUARD COMBAT SAR EXPERT. COMMANDER DESTROYER SQUADRON THIRTY FIVE WAS ALSO EMBARKED AS THE COMBAT SAR COMMANDER. DURING THE BEST 22 DAYS OF THE WAR, LEFTWICH OPERATED AT THE TIP OF THE SWORD, FAR BEYOND THE SURFACE ANTI-AIR PROTECTIVE LINE OF CRUISERS AND FACED CONTINUOUS, AROUND THE CLOCK DANGER FROM ENEMY ATTACK BY AIR, SURFACE AND SHORE FORCES. SHE WAS INVOLVED IN SIXTEEN CSAR CASES, TWO OF WHICH RESULTED IN THE CAPTURE OF ENEMY PRISONERS OF WAR. ON 24 JANUARY 1991, LEFTWICH USED HER HELICOPTERS AND SEALS, ALONG WITH HELO'S AND SEALS FROM OTHER UNITS, TO CAPTURE QARUH ISLAND, THE FIRST IRAQI TERRITORY REPATRIATED IN THE WAR. THIS OPERATION RESULTED IN THE CAPTURE OF 29 ENEMY PRISONERS AND A SUBSTANTIAL AMOUNT OF ORDNANCE AND WEAPONS. AS THE WAR PROGRESSED, LEFTWICH OPERATED FAR TO THE NORTH SEEKING OUT ENEMY SURFACE SHIPS AND SUPPORTING HELICOPTER SEARCH AND ATTACK GROUPS, THE FARTHEST NORTH OF ANY SHIP DURING THE FIRST MONTH OF THE WAR. ON 30 JANUARY 1991, DURING THE BATTLE OF BUBIYAN, LEFTWICH MOUNTED AN OPERATION OFF THE IRAQI COAST WHICH RESULTED IN THE CAPTURE OF 20 ENEMY PRISONERS OF WAR FROM THEIR HEAVILY DAMAGED WARSHIP. THE FOLLOWING DAY 15 MORE ENEMY PRISONERS WERE CAPTURED BY LEFTWICH AFTER THEY HAD SOUGHT REFUGE ON AN OIL PLATFORM SUBSEQUENT TO THEIR SHIP BEING SUNK. DURING THE OPERATION AN IRAQI WARSHIP ATTEMPTED TO INTERFERE AND WAS SEVERELY DAMAGED BY AN ATTACK HELICOPTER UNDER LEFTWICH'S CONTROL. NO FRIENDLY CASUALTIES WERE INCURRED DURING ANY OF THESE OPERATIONS. THESE CAPTURED PRISONERS REPRESENTED MORE THAN HALF OF THE PRISONERS TAKEN BY THE NAVY IN THE FIRST MONTH OF THE WAR AND PROVIDED INVALUABLE INFORMATION AS TO IRAQI NAVY INTENTIONS AND MINEFIELD LOCATIONS IN THE NORTH ARABIAN GULF. THROUGHOUT THESE OPERATIONS LEFTWICH WAS CONSTANTLY IN MINE INFESTED WATERS. ON THREE OCCASIONS LEFTWICH ALMOST STRUCK DRIFTING MINES. ONE PASSED LESS THAN THREE FEET FROM THE HULL AFTER AN EMERGENCY MANEUVER. IN ALL LEFTWICH LOCATED AND DESTROYED ELEVEN MINES AND ASSISTED IN THE DESTRUCTION OF TWO OTHERS. AFTER OPERATIONS IN THE NORTHERN GULF LEFTWICH RECEIVED A BRIEF RESPITE IN A SOUTHERN GULF PORT WHERE SHE BECAME THE FIRST COMBATANT TO CONDUCT A WARTIME RELOAD OF TOMAHAWK MISSILES IN PREPARATION FOR CONTINUED OFFENSIVE OPERATIONS. AS OPERATION DESERT STORM OFFENSIVE ACTION CEASED, LEFTWICH HAD BEEN BACK ON STATION FOR TWO WEEKS IN THE NORTHERN GULF AS FLAGSHIP FOR THE NORTH ARABIAN GULF SURFACE WARFARE COMMANDER, PARTICIPATING IN CONTINUED ATTRITION TO THE IRAQI NAVY TO SUPPORT MINE CLEARANCE EFFORTS AND PREPARATIONS FOR A POSSIBLE AMPHIBIOUS INVASION OF KUWAIT. FOR HER ACTIONS IN COMBAT LEFTWICH HAS BEEN NOMINATED FOR THE COMBAT ACTION RIBBON AND A UNIT CITATION. ADDITIONALLY, HER CREW HAS QUALIFIED FOR THE NATIONAL DEFENSE SERVICE MEDAL AND THE SOUTHWEST ASIA SERVICE MEDAL. A SUBSTANTIAL NUMBER OF THE CREW HAVE ALSO BEEN NOMINATED FOR COMBAT RELATED PERSONAL DECORATIONS. DURING THE ENTIRE DEPLOYMENT LEFTWICH VISITED SUBIC BAY, PHILIPPINES, PHUKET, THAILAND, SINGAPORE AND BALI, INDONESIA.



Another sunset means another safe day for LEFTWICH during operation Desert Storm. But, the enemy never sleeps . . .

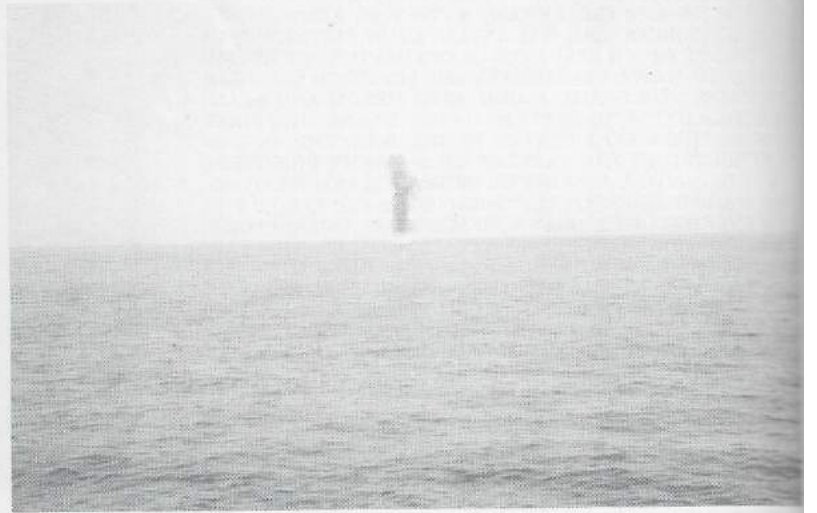
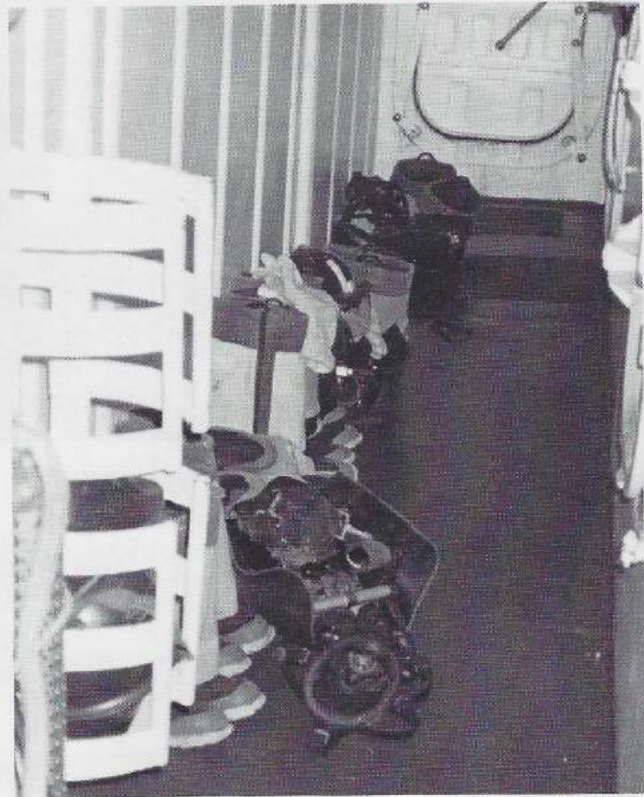
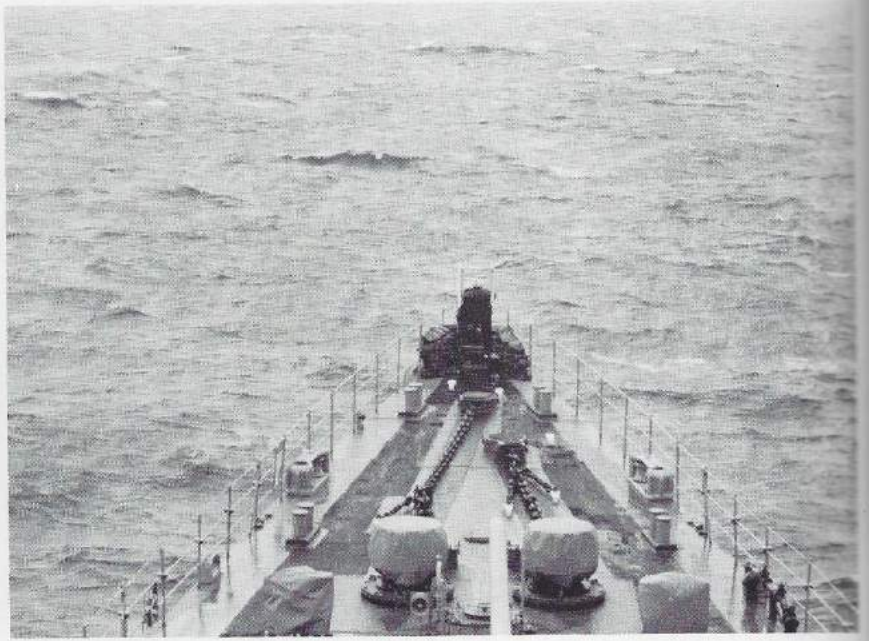


Chaff launchers remained loaded and ready throughout our stay in the Gulf.



A Leftwich sailor gets a souvenir snapshot as another mine is detonated harmlessly in the Arabian Gulf.

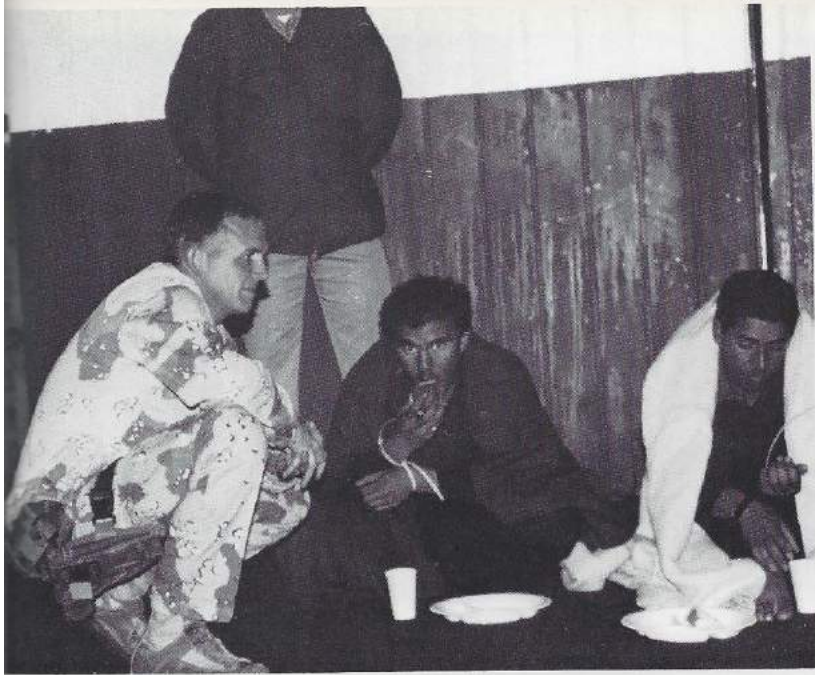
Most of the time was spent being ready, watching and waiting ...



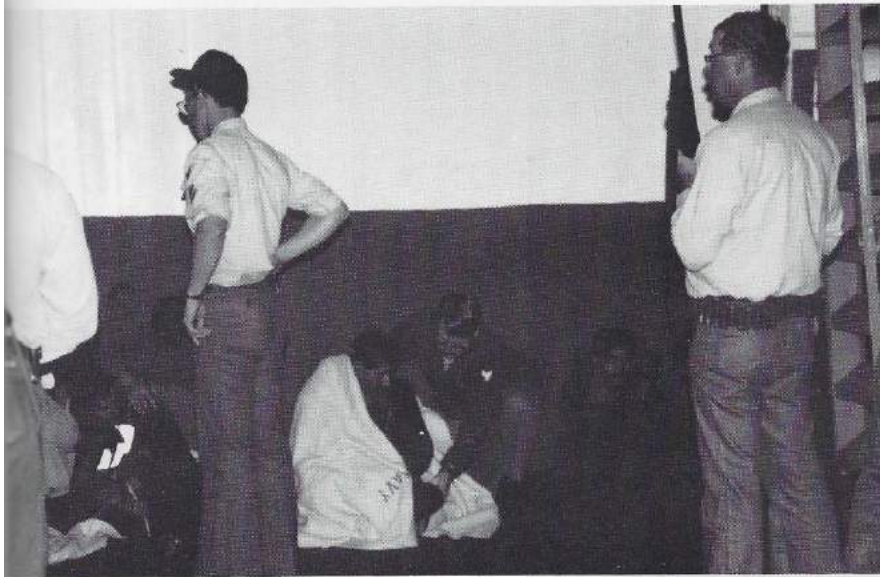
FOR MINES

Desert
Storm





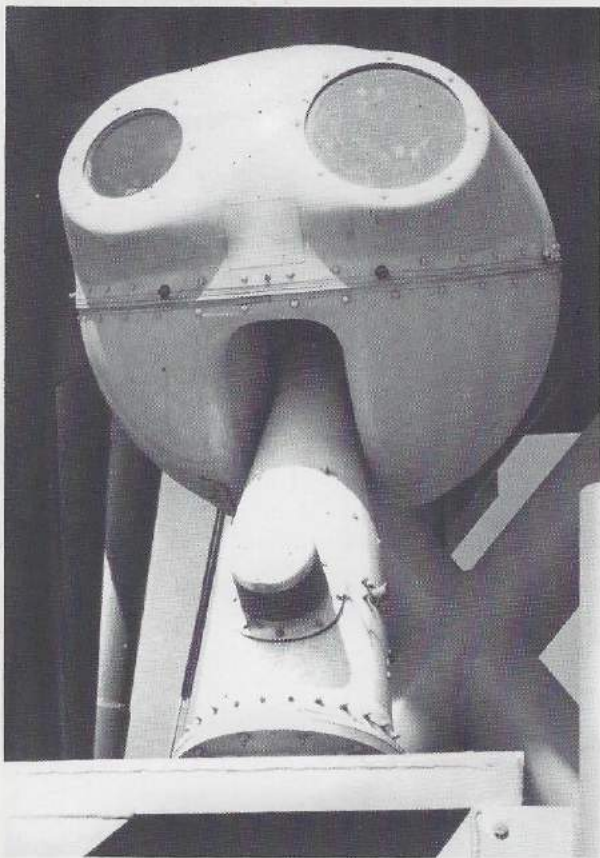
Above and below: Captured Iraqi weapons



Enemy POWs got a brief stop onboard Leftwich before heading for more permanent facilities

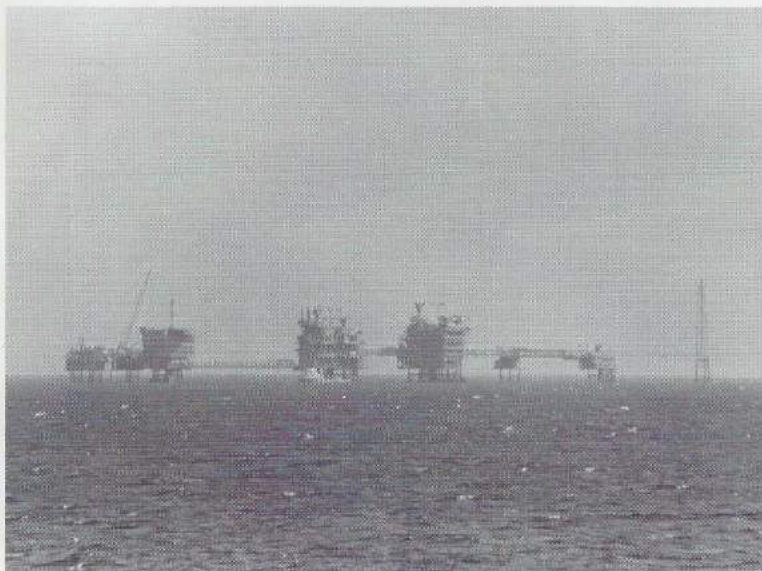


Desert Storm



A Saudi Corvette patrols the gulf

ET lives! The mast mounted sight that saved



So this is what everybody's fighting about

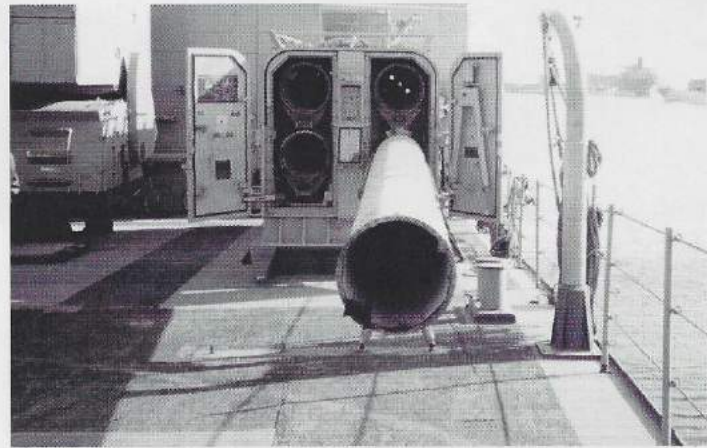
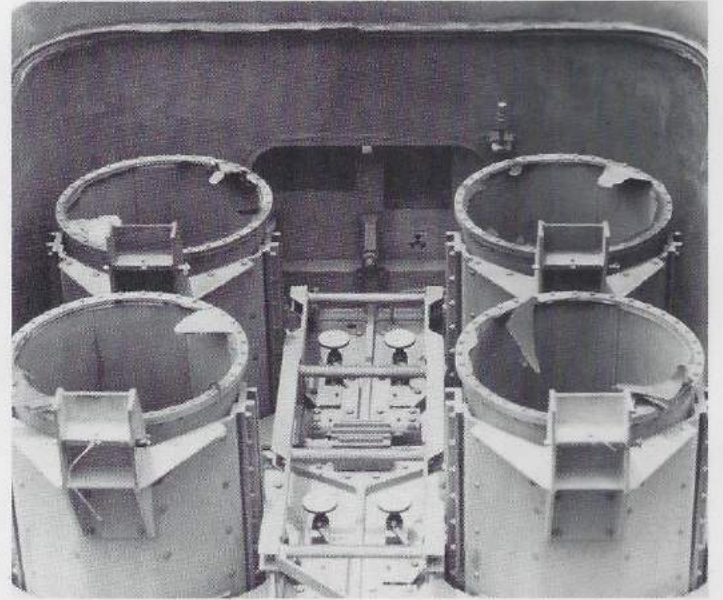


A sober moment at General Quarters

Desert Storm

America was not alone out there

The day after



Above: Harbor security in Jebal Ali Right: Leftwich comes back for seconds Below: Mine watch celebrates the end of the war



Desert Storm

Crossing The Line

Crossing the line is an ancient and dignified ceremony that ships conduct when they cross the equator. Those that have crossed before are known as shellbacks, those that haven't are wogs. Shellbacks make the wogs wear strange clothing and are given free reign to mentally harass and physically pummel them.



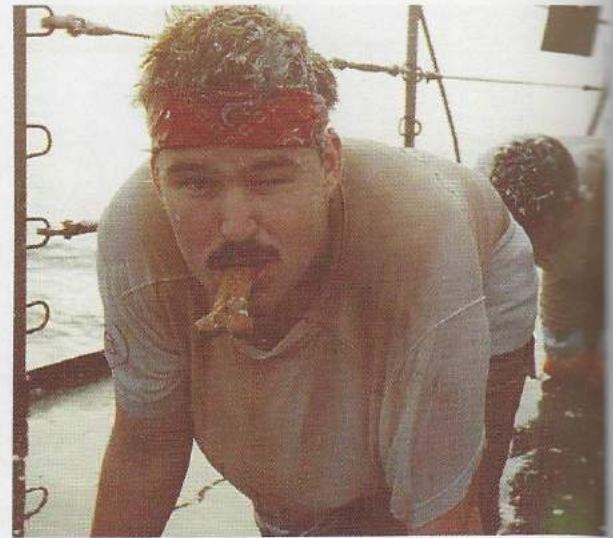
Above: Shellbacks in a wog stomping sort of mood

Top Right: It probably tastes better than it looks

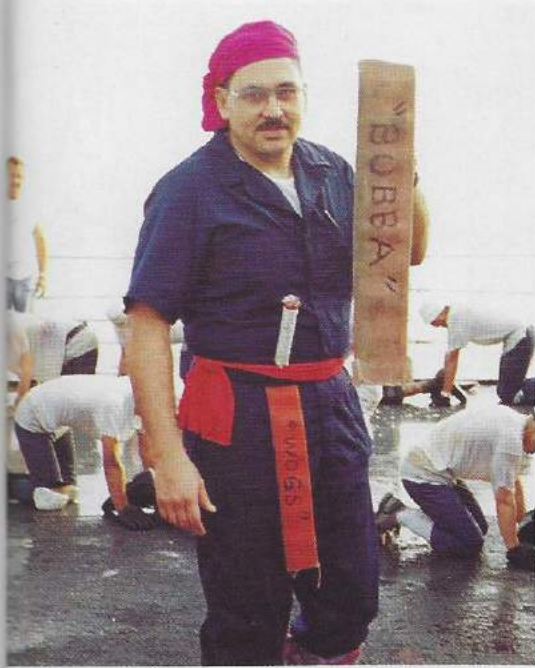
Middle Right: See, he's thinking about seconds

Bottom Right: Starting the day right, Wog aerobics

Below: Wogs making the ship go faster



Wog Day



ENCS Leyva would like to introduce all you slimy wogs to "BUBBA".

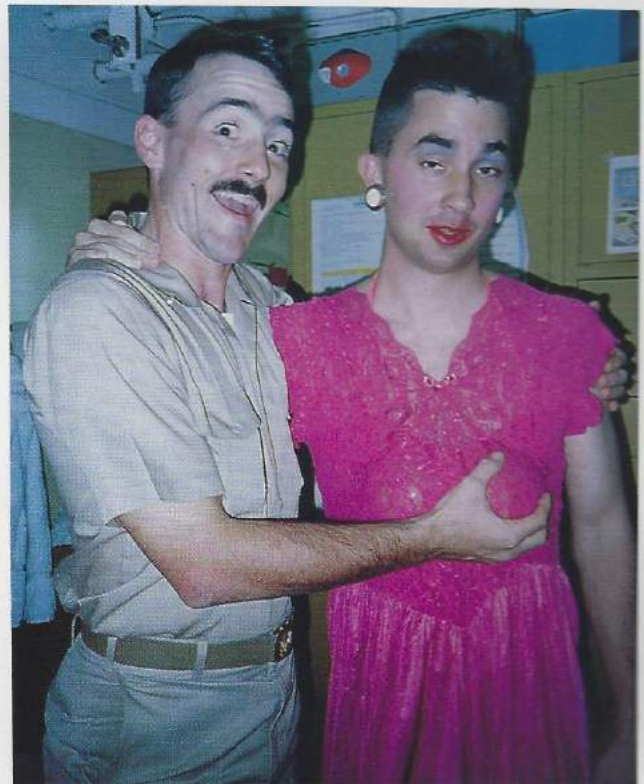
Above: A few Honorable Shellbacks having their way with Wog Queen GMM3 Smith.



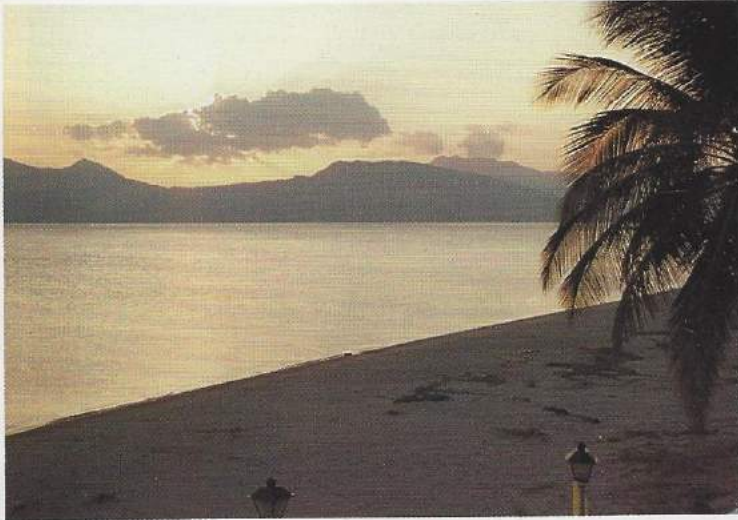
Left: Davy Jones, Wog Queen, Wog Dog, and King Neptune look on as a slimy Wog approaches to seek their forgiveness.

Bottom, left: OS2 Cahill checking out Wog Queen candidates GMM3 Smith, EW2 Ma-trella, and SN Pratt.

Below: LTJG Pratt has his hands full with Wog Queen candidate LTJG Rehor.



Subic Bay



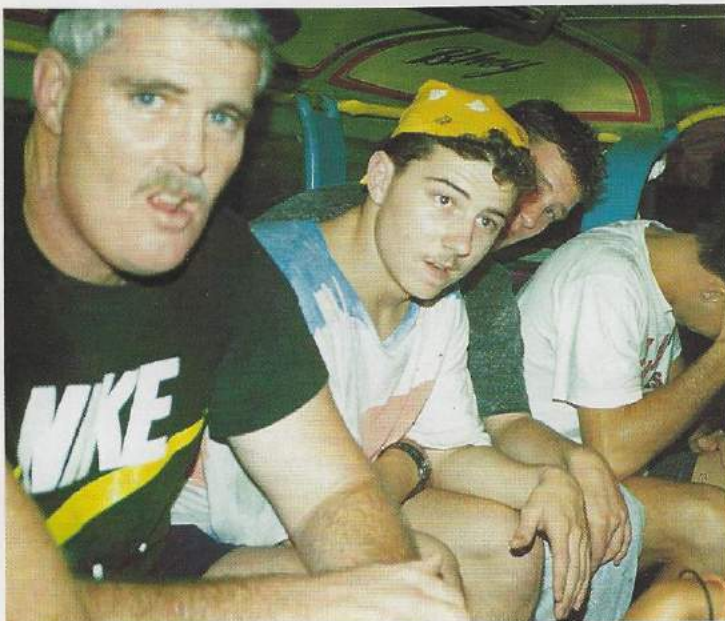
Above: A side of Subic Bay, Phillipines not often talked about, but always enjoyed.

Top, right: OS3 McAbee, OS2 Veatch, and OS2 Cahill partying at the Metallica Club in Subic.

Right: A side of Subic Bay, Phillipines often talked about, and always enjoyed!

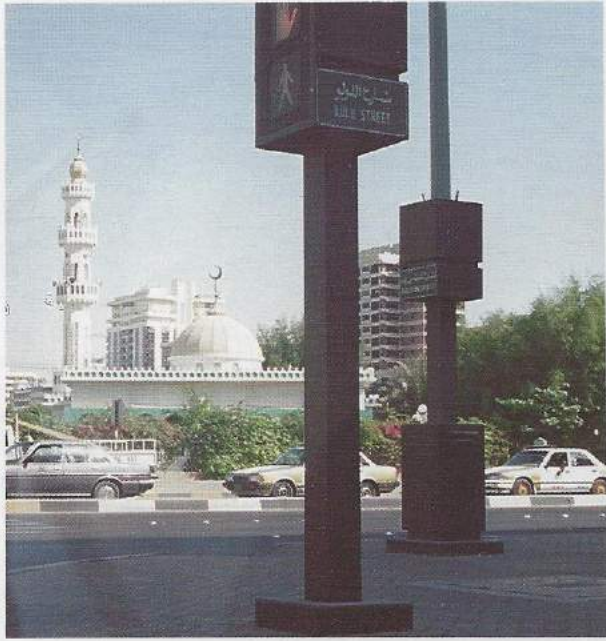
Below: OSCS O'Neill and OSSN Crain enjoying one of Subic's world-famous Jeepney rides.

Bottom, right: A look into downtown Olongapo.

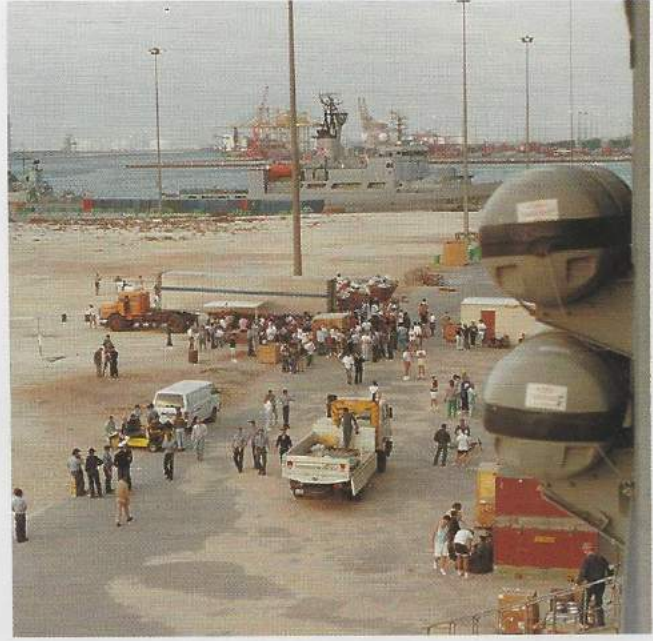


Middle East

B
a
h
r
a
i
n

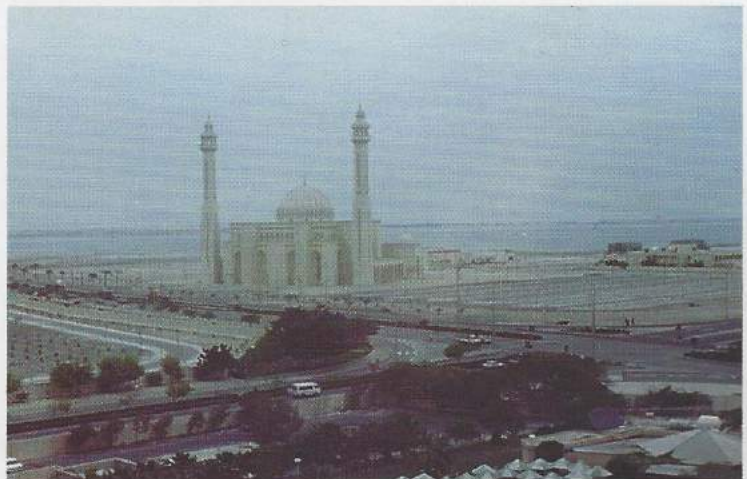


One of the many beautiful temples seen in downtown Abu Dhabi, UAE.



Beer on the pier in Jebel Ali.

A
b
u
D
h
a
b
i



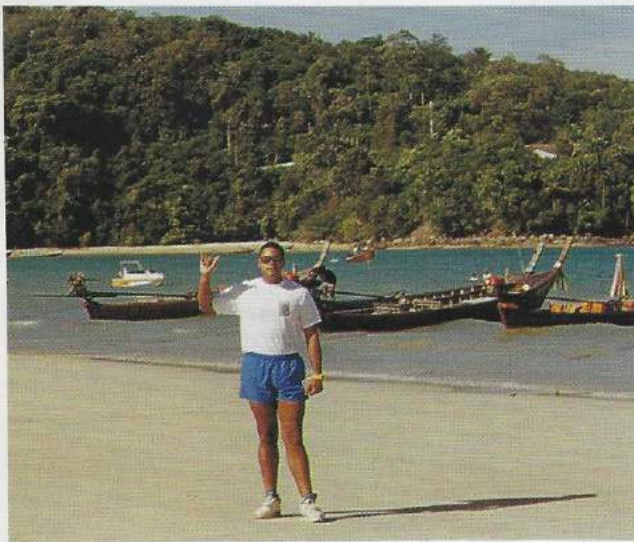
Jebel Ali

Phuket



The land of Thailand awaits our arrival!

Thailand, formerly Siam is a constitutional monarchy bordered by Burma, Laos, Cambodia, and Malaysia. Bangkok is the capital. The climate of Thailand is tropical monsoonal. Thailand's economy is heavily agricultural with rice being the primary crop. Industry is minor and handicraft production exceeds factory output. Tourism is an important source of foreign exchange. Phuket offered LEFTWICH sailors an excellent variety of foods and entertainment, as well as some of the best shopping of the deployment. Beautiful beaches and an exciting night life also added to the crew's enjoyment.

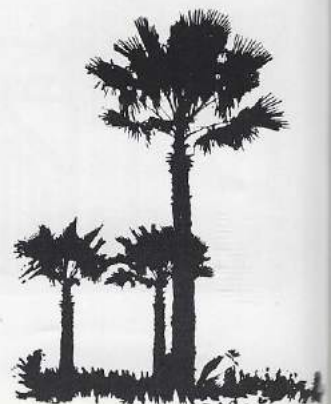


Above: LT Reed checks out the beach in Phuket.

Below: A look down the main street along the beach in Phuket.



LTJG Pratt, LTJG Johnson, and ENS Iliakis stop to relax at the Hard Rock Cafe in downtown Phuket.



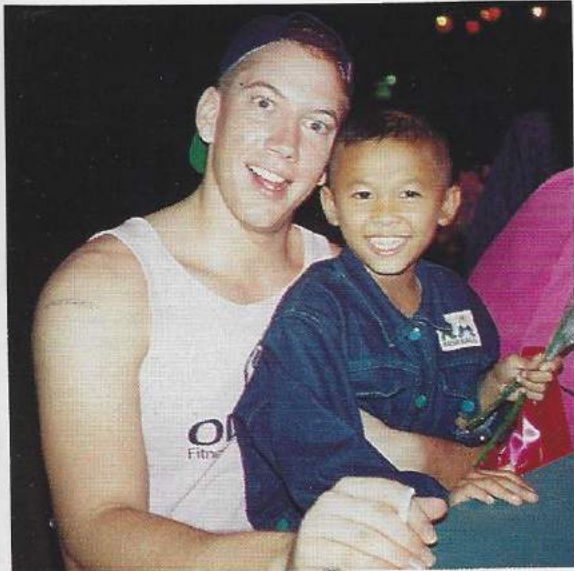
Thailand



Many crewmembers checked into this hotel across the beach from the boat landing for some rest and relaxation away from the ship.



Below: OSSN Gallon poses with one of the many Thai children who were selling everything from peanuts to roses.



ENS Carpenter, LT Turner, LTJG Nagales, LTJG Rehor, and ENS Hindsman enjoy a liquid lunch in Phuket. What's in that bag anyway?



A look at some of the beautiful accommodations that were available in Phuket.

Singapore



Above: Seen here are a few of the many Christmas decorations seen throughout downtown Singapore.

Right: Singapore offered a very diverse culture as seen here. In the foreground are very old, small shops and cottages while in the distance, the modernization of an advanced society is visible.



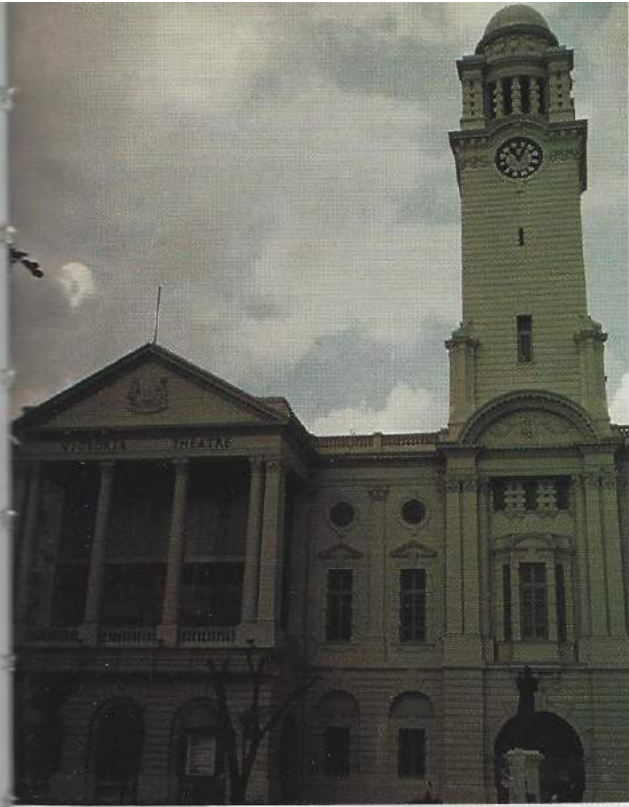
Above: The Singapore skyline.

Left: The many faces of a Hindu temple.

Bottom, left: This colorful "hearse" is a part of every funeral in Singapore's Chinatown.

Below: The Singapore skyline as seen from our anchorage on the return trip.





Above: The Victoria Theatre, one of the many beautiful landmarks in Singapore.

Top, right: Christmas lights.

Right: One stop on the tour many crewmembers enjoyed was this Chinese temple.



Left: We wouldn't be needing these ferry boats as we went pierside in Singapore.

Below: Modern high-rise buildings were prominent in this growing trading center of the world.

Singapore city, the capital of Singapore, is one of the world's largest and busiest ports. Singapore island is largely low-lying and fringed by mangrove swamps; it has a tropical rain-forest climate. Singapore is one of the world's great commercial centers; the economy is supported primarily by manufacturing, service industries, and trade. Agriculture plays a minor role, and the country imports most of its food. The predominantly urban population is mainly Chinese; Malays and Indians constitute large minorities. Buddhism, Islam, Hinduism, and Christianity are the major religions.



Bali



Above: This rough looking group of natives known primarily for wearing feminine attire was photographed while on a tour of Bali.

Right: The food in Bali was delicious and very fresh!

Below: Whether it was sun or shopping you were looking for, the beaches in Bali offered a little of everything.



Above: One of the many Picturesque sights in Bali.

Left: DC2 Waters, HT1 Kirsch, MR2 Drew, and DC2 Sparks take a break from shopping.

Right! LT Holmes with his newfound companion.



Economically and culturally, Bali is one of the most important islands of Indonesia. Rice is grown on irrigated, terraced hillsides; other crops include sugarcane, coffee, copra, tobacco, and fruits. The Balinese are skilled artisans, particularly in wood carving, and in fashioning objects of tortoiseshell and of gold, silver, and other metals. The women of Bali are noted for their beauty and for their skill in weaving cloth of gold and silver threads and in embroidering silk and cotton clothing. The principal religion on the island is a type of Hinduism that incorporates Polynesian religious rites.



Top, right: STGC Vollstedt, QM2 Robinson, and SM1 Kujiuji relax in the pool.

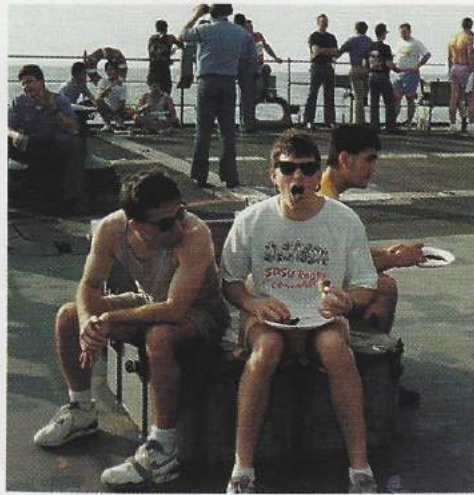
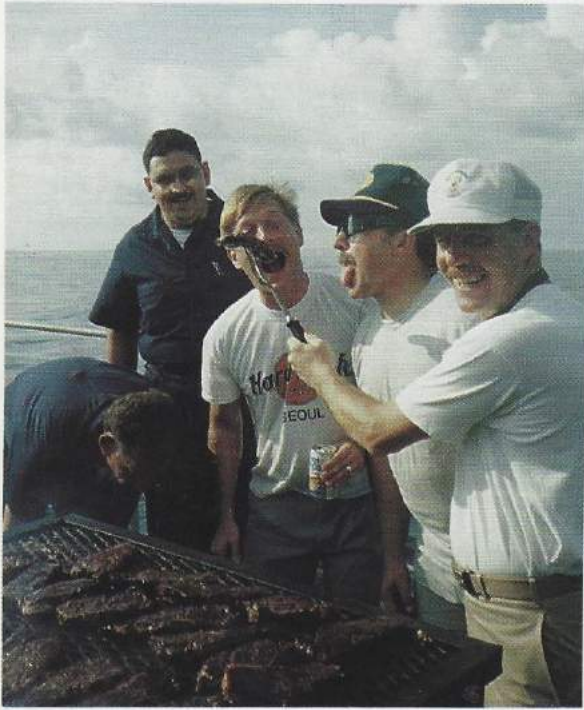
Above: The hotels in Bali where most crewmembers stayed offered breathtaking landscaping such as that seen here.

Middle, right: BM1 Marier, TM1 Dieckman, and LTJG Pratt slow down long enough for this shot in Bali.

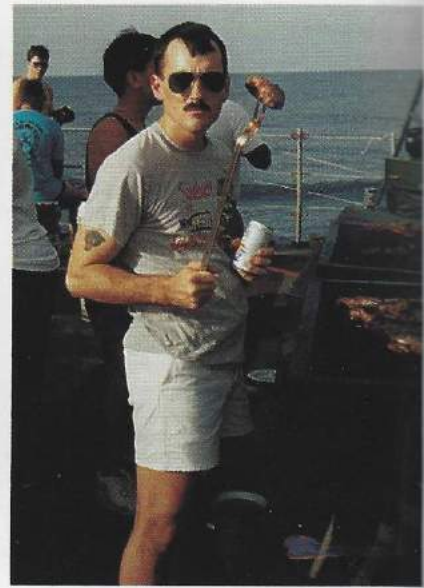
Right: This view from a hotel balcony shows the unbelievable accommodations enjoyed during our stay in Bali.



Fantail Cookouts



Above: ENS Medved shows LT Holmes what he's having for dinner.



"Special orders piss me off!"

Left: Chiefs Vollstedt and Crawford sampling some of FCCM Ashenfelter's cooking as ENCS Leyva waits for his share.



LEFTWICH crewmembers enjoying the time off to relax.

Fantail festivities.



LTJG Iliakis can't even get the sharks to eat his cooking.





There's always plenty of food on the fantail.

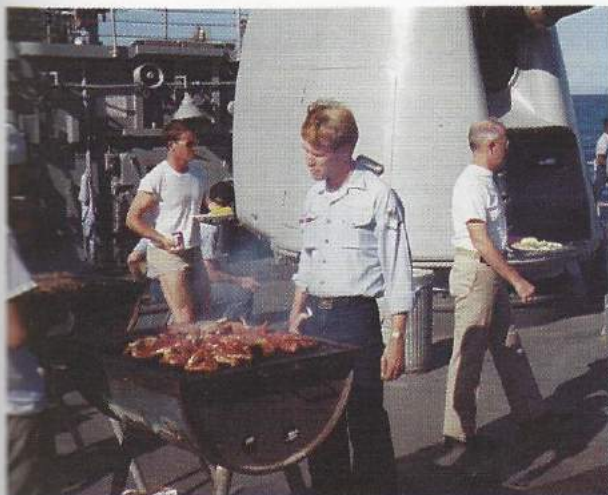
LTJG Anderson comes up for a breath after his fourth plate as ENS Churchill looks on in amazement.



OS3 Gallon relaxes in LEFTWICH'S hot tub.



OS2 Blake, alias BUG waves for the camera as EW1 Taylor looks on.



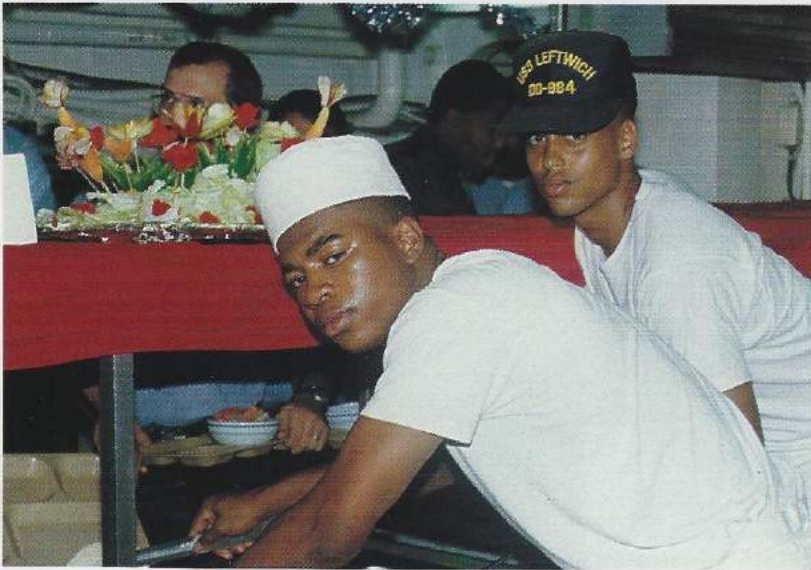
DK3 Wheeler wondering when the chicken will be ready.

Hey, it beats the hell out of working!



A LEFTWICH Tradition

Snapshots



Santa couldn't make it to the Gulf in his sleigh, so this British Lynx helicopter painted for the occasion helped spread Christmas cheer.

MSSN McCollum and MSSN Elliot serving up Christmas dinner.



We're a long way from Dixie!



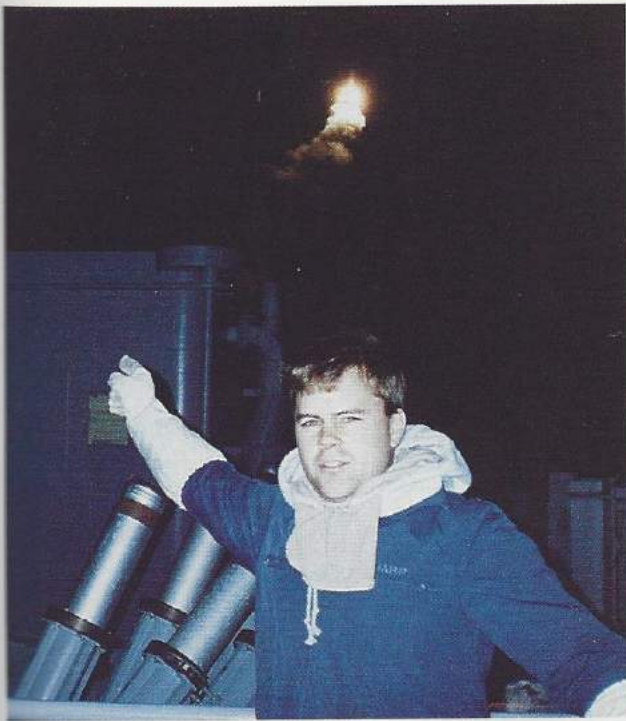
Father Dunham and Chaplain Brown lead Christmas carols on the Pacific Inn.



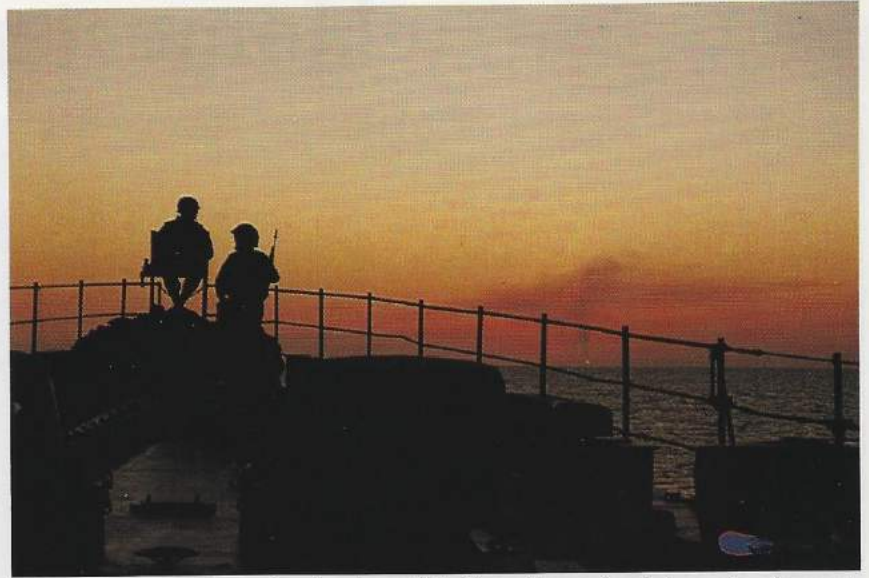
Another day draws to a close.

LTJG Anderson, LTJG Nagales, and LTJG Johnson sightseeing in Bali.





EW3 Worthy watches a Tomahawk cruise missile fly into the night on the morning of 17 January.



Although the setting sun makes for a beautiful picture, the coming darkness simply meant that the deadly Iraqi laid floating mines would be harder to see.



LTJG Anderson and LTJG Nagales monkeying around in Bali.



Colors took on a whole new meaning of pride during Operation Desert Storm. This photo was taken in Jebel Ali.



LTJG Medved calls home from our anchorage in Singapore.



This pigeon made the trip from Pearl Harbor to the Philippines onboard LEFTWICH during the early days of our deployment.

Homecoming



Top, left: SA Boxleitner, LCDR Frick, CDR Garrett, and SMSA Nguyen getting ready to hit the beach.

Above: Hundreds of LEFTWICH's family and friends turned out to welcome us home from our historic deployment.

far left: Commander, Third Fleet met LEFTWICH at Papa Hotel and congratulated the crew for a job well done.

Left: A Hawaiian war canoe escorts LEFTWICH into the harbor as a local Hula dancer looks on.

Bottom, left: SK3 Stark, BM2 Coleman, SA Jones, SA Heth, SN Peralta, and SR Williams are all happy to be home.

Below: One of the beautiful Hula dancers stops for a picture with friends.



When LEFTWICH got underway on October 30, 1990, no one could have imagined the events that would take place over the next six months. But, in the early hours of January 17th, an ordinary WESTPAC deployment turned into Operation Desert Storm, a full-scale war with Iraq. Family and friends of the crew were glued to CNN trying to get word about LEFTWICH. Phone calls and mail were scarce due to the circumstances. LEFTWICH and her crew performed admirably in the Gulf, but so did family and friends back home, the unsung heroes of Operation Desert Storm. Thank you.



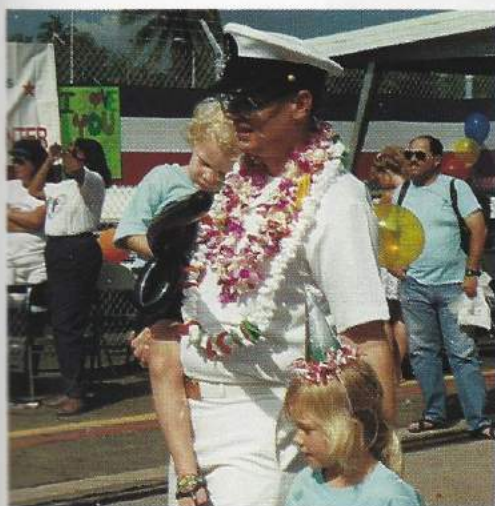
Pearl Harbor, Hawaii

hi daddy
BRICARDY



Far left: DSC Faddis, Daddy to these two, is happy to be home with his family.

ENS Hindsman, LTJG Pratt and Sons.



A real Hawaiian welcome!

Bottom, left: Hawaiian music welcomed us home.

Below: LEFTWICH proudly enters Pearl Harbor as flag-waving family and friends greet us.

This little girl will see her Daddy for the first time but doesn't yet realize the significance of the day.



April 11, 1991

USS LEFTWICH DD-984



Expect The Best