

Iron-On Transfers & Labels

Application Instructions



Iron On
a Table



Use FIRM
Pressure



Iron Entire
Graphic



Cotton/Poly
Setting



No Steam



No Ironing
Board



IMPORTANT: Wash and dry your garment before applying your iron-on transfer or label. This will avoid any dye from the fabric from bleeding through onto your iron-on Transfer. Colors will appear more vibrant after iron-on process is completed.

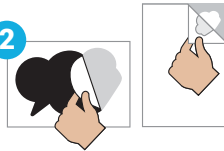
Our Iron-On Transfers & Labels have been washer tested and will not come off when applied properly.

1



PREHEAT Use a dry iron (no steam), set to between cotton & polyester (one point less than maximum heat setting). Preheat for 3 minutes. Iron on a hard surface like a table. We recommend placing a pillowcase under the garment, this will allow pressure to be spread evenly. Iron the area where the iron-on graphic will be applied for 5 seconds to remove wrinkles and moisture in the garment.

2



PEEL your iron-on graphic off of the backing very slowly.

NOTE: Bend or fold the page to find the edge of your die-cut and peel graphic off the backing paper. Alternatively, you can remove the excess material around your graphics by peeling one of the corners of the page. If your graphic gets stuck to itself, it can easily be un-stuck. Ironing will remove any wrinkles.

3



PLACE the iron-on graphic on the garment, image side facing up.

IMPORTANT: Cover the iron-on graphic fully with the parchment paper provided and smooth out edges and wrinkles. If you did not receive parchment paper, you can use any household parchment or wax paper.

DO NOT iron directly on the iron-on graphic.

4



IRON using FIRM pressure for 12-15 seconds in a circular motion to get maximum opacity.

5



REMOVE parchment paper. If the iron-on graphic has not fully adhered to the garment, replace the parchment paper and iron for additional 5 second intervals. Larger graphics may require more than 25 seconds per section of the transfer, especially around the corners and edges.

6



CARE INSTRUCTIONS

- Wait 24 hours before first wash.
- Wash the garment inside out.
- Machine wash COLD using a mild detergent.
- Do not dry clean.
- No chlorine bleach.
- For best result hang to dry.

Can be applied to T-Shirts, Pillow Cases, Blankets, etc.! Show us what you've made in the ARMS Facebook group, we'd love to see it.