

Help Your CPAP Intolerant Patients

Talk to them about Inspire



- A small device inserted in an outpatient procedure
- Patient controlled with the Inspire sleep remote
- Cloud-based adherence monitoring
- Covered by most U.S. insurance companies

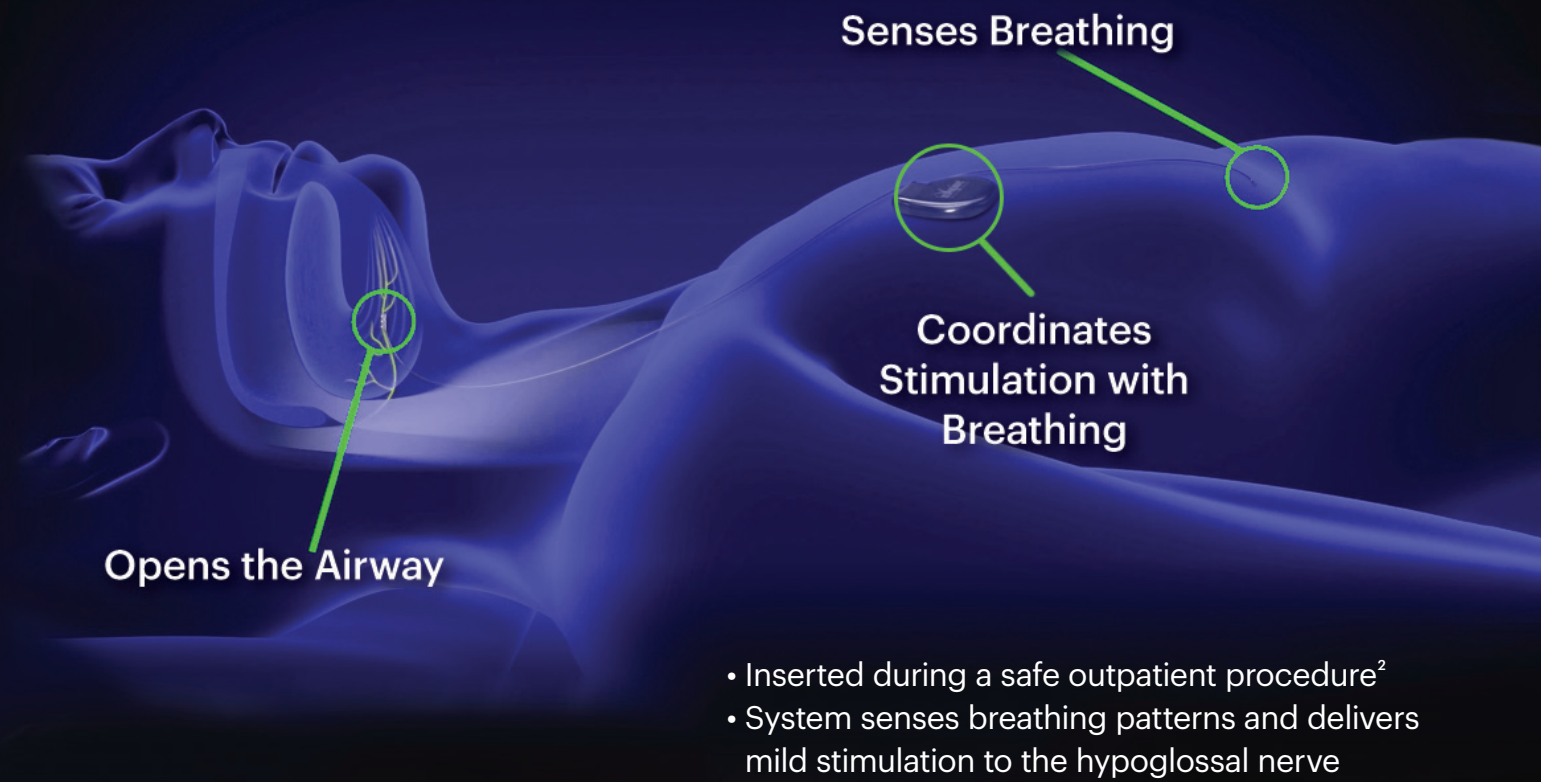
79%¹

reduction in sleep apnea events

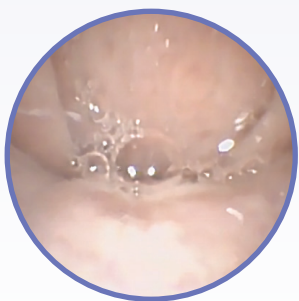
94%²

of patients are satisfied with Inspire

Inspire Delivers Motor Nerve Stimulation



Inspire Restores Muscle Tone & Opens The Upper Airway During Sleep



Palate



Tongue Base

Obstructed Airway



Palate

180% increase
in airway dimension



Tongue Base

130% increase
in airway dimension

Open Airway

At therapeutic titrated levels, Inspire therapy prevents the airway from collapsing to facilitate unobstructed breathing

Inspire Is Simple To Use



The Inspire Remote

Patient Control

- Inspire is controlled by a hand-held sleep remote
- Patients simply turn Inspire on before bed and off upon waking

In Office Activation Visit

- A healthcare professional programs initial settings for comfort and effectiveness

Sleep and Fine Tuning

- Patients use Inspire at home for a few months and self-optimize
- A sleep study confirms settings for best results

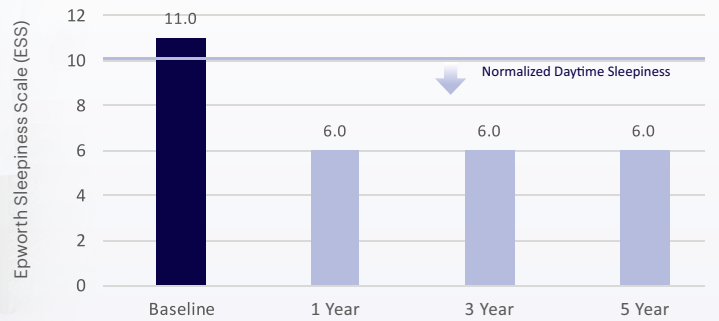
Inspire Workflow Mirrors CPAP



Sustained Clinical Results

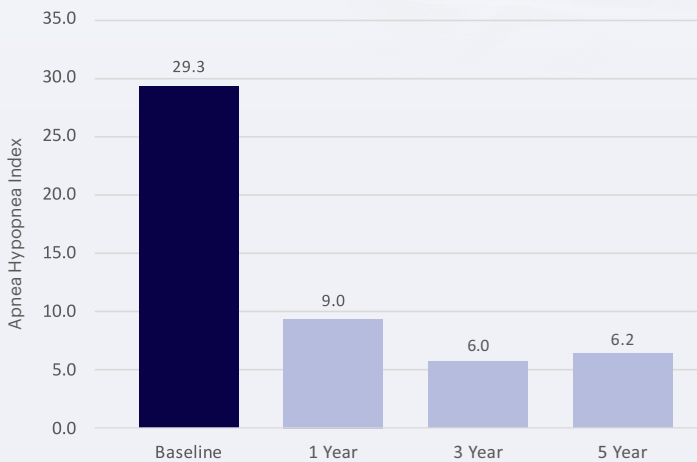


Significant decrease in daytime sleepiness¹



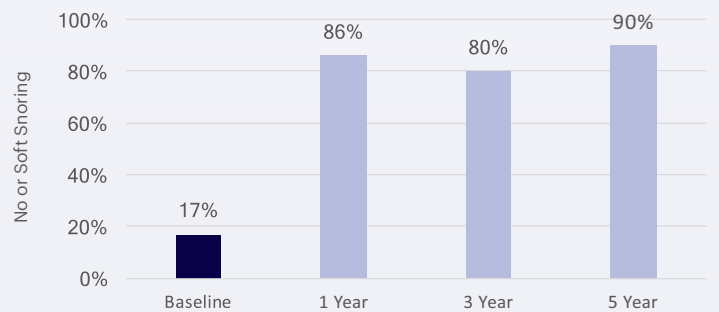
All p values < 0.01 vs. baseline. Results in median.

Significant decrease in apnea events maintained over 5yrs¹



Significant reduction in snoring¹

% of Bed Partners Reporting No or Soft Snoring



Over 100 peer-reviewed publications

- STAR Trial; 5-Year follow-up data
- ADHERE Registry; Over 1,200 enrolled

Most US Insurance Covers Inspire

- Broad commercial coverage
- Medicare coverage across the US
- Many VA and military hospitals

Many of your patients may be eligible for Inspire

- Moderate to severe OSA (AHI 15-65 with <25% central and mixed apnea)
- Unable to get consistent CPAP benefit
- Not significantly obese
- At least 22 years of age

Risks associated with the surgical implant procedure are low but may include infection and temporary tongue weakness. Most patients acclimate well to the presence of the Inspire system and to the therapeutic stimulation. Some patients may require post implant adjustments to the system's settings in order to improve effectiveness and ease acclimatization. For complete indications, contraindications, and important safety information visit:

Professionals.InspireSleep.com



¹1-year STAR data: Strollo et al., NEJM 2014 ²Heiser, ERJ 2019 ³Woodson et al., OTO-HNS 2018