

OPMI® Sensera™/S 7 System

Step into the light



We make it visible.



"red dot" award for high design quality: in an international competition for product design, OPMI Sensera impressed the jury with its high degree of innovation, excellent functionality and superb ease of use.

reddot design award
winner 2003



Ease of Use

Always a step ahead

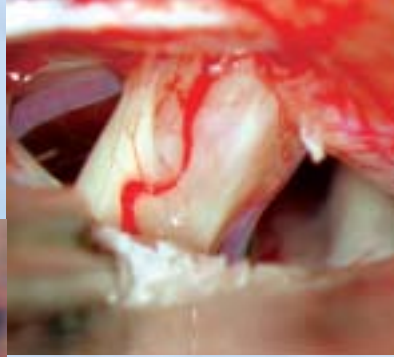
Since the introduction of the first surgical microscope in 1953, the field of otorhinolaryngology has been at the forefront of microsurgery. For almost 50 years Carl Zeiss, in collaboration with surgeons, has strived to produce the best possible visualization solutions, thereby helping surgeons improve the quality of life for countless patients.

This tradition of excellence is clearly evident in the OPMI Sensera/S7 System. Feather-light maneuverability, combined with extraordinarily bright illumination and high-quality image clarity, creates a unique combination of features for use in ear, nose, or throat procedures.



*Clear lines and precise form
signal a new era in ENT surgery*

*Below: Papillomatosis of the left vocal cord region.
Source: Hannover School of Medicine,
Prof. Dr. Th. Lenarz*



*Above: Acoustic Neuroma.
Source: Gruppo Otologico-Piacenza,
Prof. Dr. Sanna*

For the ear, precision is key

The OPMI Sensera/S 7 System is specifically optimized for the delicate and precise techniques demanded in ear and skullbase surgery. With the optional TwinER laser attachment, contact-free surgery in the middle ear can be performed with minimal thermal or collateral damage.

Just follow your nose

Varioscope optics, combined with the inclinable binocular tube, enable the surgeon to maintain a comfortable position, particularly in paranasal sinus surgery, where the working distance changes frequently. Refocusing is as simple as pushing a button and surgeons also have the ability to adjust the spot size of the illumination to see down narrow nasal passages.



Preserving functionality in throat procedures

The compact design of the OPMI Sensera permits a high degree of comfort during laryngoscopy procedures or even when a micromanipulator is used to attach a CO₂ laser to the microscope. Using the OPMI Sensera's optional external focus, the laser and microscope are synchronized without interrupting the surgical workflow.





Optical Excellence

Optics at their best

Few surgical tools play as important a role as the surgical microscope. The more challenging the procedural requirements, the more the need for Carl Zeiss optics with their legendary image quality, improved resolution and color fidelity.

An exciting feature of the OPMI Sensera is its internal focusing mechanism, the Varioscope. Now a surgeon can focus from 200 mm to 415 mm without changing lenses. By using a handgrip, the surgeon can move up or down the focal plane. No more delays and no more limitations – focus quickly and precisely.

The renowned Zeiss Zoom System ensures optimal use of the optics at all times. With the OPMI Sensera, magnification is continuously variable instead of pre-set to 3–5 positions. Zeiss is also proud to include the Superlux 180, the answer to surgeons' repeated requests for more light. Xenon illumination, once restricted to more expensive systems, brilliantly illuminates even the finest details without distorting their natural colors.

Balance at the push of a button

An unbalanced microscope can cause unnecessary distractions and frustrations. The innovative, push-button balancing system ensures that the microscope is balanced quickly and easily even when using the maximum number of accessories.



Form and function redefined



Ergonomic handgrips include four programmable buttons in addition to zoom and focus controls.

Ease of documentation

MediLive Video Systems provide excellent documentation and observation for the surgical team. Options include the integrated 1CCD camera or the easily adapted MediLive Advanced Digital 3CCD camera. When combined with the MediLive ImageBox, still images can easily be recorded on CDs, for patient records or for presentation purposes.

Adaptability is key

A dovetail adapter allows CO₂ micromanipulators and the TwinER to be attached to the OPMI Sensera.



Perfect Integration



Noticeable convenience

Clearly designed lines, form and functionality define the OPMI Sensera/S 7 System. No expense was spared to make convenience possible, yet invisible. Internal zoom and focus, the Superlux 180 Xenon illumination, and the optional integrated 1CCD camera are all built in and hidden from view, thus eliminating bothersome cable clutter that can affect the movement of the microscope and make it easier to clean.

Feather-light maneuverability

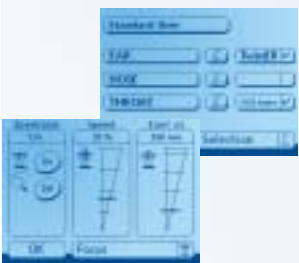
The floorstand has four freely rotating casters that facilitate easy movement during repositioning in the

OR or for transfer between different rooms. OPMI Sensera is also available on the S7 ceiling mount with a fixed height column or an optional power column.

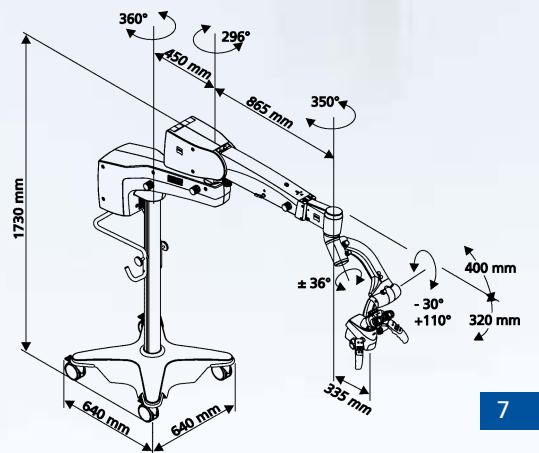
Individual settings

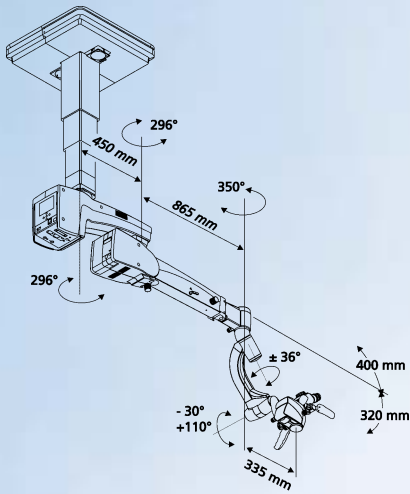
In today's increasingly crowded ORs, the OPMI Sensera easily and quickly adapts to the varying procedural needs of the ENT surgeon. The touch of a button on the S 7 graphic interface quickly configures an optimized setup for ear, nose or throat surgery. Plus, three surgeons can store their personal preferences for magnification, focus and illumination.

At Carl Zeiss we view it as our responsibility to not just recognize new surgical trends, but to provide solutions that seamlessly and comfortably enable surgeons to apply and evolve these new techniques. Our goal is to provide surgeons with instruments that will help them to perform procedures that improve outcomes and the quality of life for patients around the world. And this is exactly what the OPMI Sensera will do.



The outstanding features of the S7 ceiling mount include not only its precise positioning above the operating table, but also the ample headroom provided in its standby position by the optional power column.





Technical Data

OPMI Sensera

Magnification Motorized Zeiss Zoom, 1:6 ratio, adjustable via handgrips or foot control panel.

Focus System Internal, motorized, continuously variable, adjustable via handgrips or foot control panel.

Working Range 200–415 mm

Main Binocular Tube

Inclinable 0-180° with 12.5x or 10x wide-angle eyepieces.

S 7 Floorstand and Ceiling Mount

Line Voltage 115 / 230 V $\pm 10\%$

Frequency 50-60 Hz

Power Consumption Max. 115 V, 10 A

Max. 230 V, 8 A

Line Protection Automatic Circuit Breaker

Weight


Floorstand: Approx. 165 kg (complete with OPMI)

Ceiling Mount: Approx. 120 kg (complete with OPMI)

Optional Power Column of the S7 Ceiling Mount

Lifting range: max: 350 mm

Compliance

- DIN EN ISO 9001
- EN 46001
- ISO 13485
-  

Superlux 180 Light Source

Main and Backup Illumination

180 Watt Xenon daylight lamp via light guide in fast action lamp changer.

S e n s e r a



*Impressive details &
perfect balance*



The amazing line of ENT microscopes from Carl Zeiss:

1. OPMI pico/S100 System
2. OPMI 1FC/S21 System
3. OPMI 111/S21 System
4. OPMI Sensera/S7 System
5. OPMI Vario/S88 System
6. Prism Loupes

Carl Zeiss

Surgical Products Division
73446 Oberkochen
Germany

Fax: +49 (0) 7364/20-4823
E-mail: surgical@zeiss.de
www.zeiss.de/ent

30-421/II-e/USA Printed in Germany W-TS-V/2003 UTo
Subject to change in design and scope of delivery and as a result of ongoing technical development.



The amazing line of ENT microscopes from Carl Zeiss:

1. OPMI pico/S 100 System
2. OPMI 1FC/S 21 System
3. OPMI 111/S 21 System
4. OPMI Senseira/S 7 System
5. OPMI Vario/S 88 System
6. Prism Loupes

Carl Zeiss Surgical, Inc.
One Zeiss Drive
Thornwood, NY 10594

Phone: 800.442.4020 Customer Service
Fax: 800.882.1554
E-mail: surgical@zeiss.com
www.zeiss.com/ent

OPMI is a registered trademark of Carl Zeiss.
©2002 Carl Zeiss