



***surgiForce***

**SURGEON'S CHAIR**



ENJOY QUALITY AND DESIGN

# surgiForce



Item No. : 2600 0002 with Dynamic seat (Illustration)

Item No. : 2600 0004 with Comfort seat

That is high tech & high precision.

The ultimate surgeon's chair for microsurgery.

Sophisticated engineering, design and function down to the smallest detail. Amazing range of armrest adjusting functions: Turn it, tilt it, rotate it, extend it - to support each of the surgeon's arm movements with the greatest of ease! Ultra-precise navigation within the operating field, sterile operation, and a comfortable, non-fatiguing work environment - for a work flow worthy being rated "Premium de luxe".



## MED.TEC at its highest level

### Double castors

The five high-grade double castors are smooth-running and rotated by 360 degrees. This means no-limits mobility, especially in confined operating room spaces. *surgiForce*'s central front castor in particular gives extra stability to keep the treating surgeons safely in place whenever they shift their bodyweight forward.



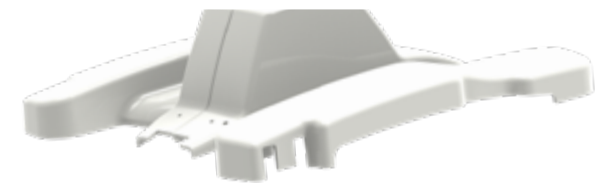
### Chassis

The drive mechanism's base is made of cast aluminum. This means maximum stability and longevity and no-limits mobility. The material and workmanship meet the strictest sanitary requirements.



### Plastic cover panels

The high-shine plastic cover panels with their scratch-resistant and impact-modified surface finish are extremely hygienic and easy to disinfect. Abrasion-resistant corner guards (orange) made of synthetic rubber take the stress out of maneuvering *surgiForce* even at close quarters to other medical equipment.



# Mains-free operation

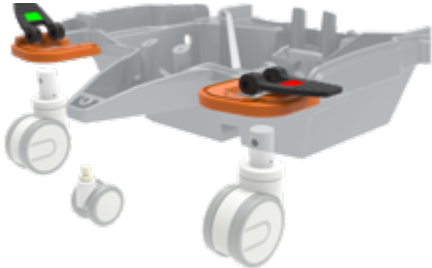
## Accumulators

The charger-battery-control unit integrated in the drive mechanism permits mains-free operation at protective low voltage. Splash-protected charging socket on the bottom of the drive mechanism.



## Braking system

The easy-to-reach and easy-to-use central brake acts on all four double castors to keep the *surgiForce* safely and reliably in the desired position.



# Multi-function unit

## Foot operated

To activate the multi-function unit, tap it with your foot. It allows the effortless powered height adjustments of the seats and armrests, independently of each other.

Intuitive footswitch operation of the multi-function unit for powered seat height and armrest adjustment. Activation is signaled by acoustic and visual signals.



## Sterile operation

Black pedal: seat height adjustment



Gray pedal: arm height adjustment



PREMIUM LINE

## Armrests with „de luxe“ feature



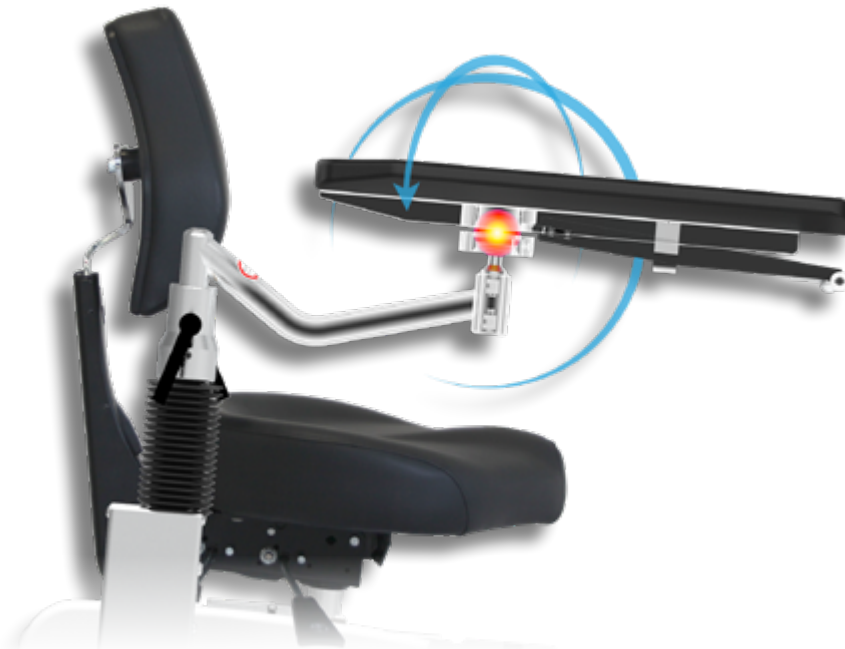
### 3D freedom of movement

High-precision, maintenance-free ball joint for full 360-degree range armrest movements around all axes. Ultra-lightweight guide system for fast, efficient and vibration-proof adjustment of individual underarm positions.

Need to readjust *surgiForce* while maintaining sterile conditions?

Not a problem! In addition to the footswitch, *surgiForce* features so-called "one-hand triggers" underneath the armrests. Lift them briefly to adjust the height!

Angled armrest support for increased freedom of armrest movement around the lateral axis.



## Seating systems



Comfort

The seating system Comfort: With mechanical individual adjustment functions. For a correct, back-friendly sitting and working posture, the seat surface or the seat depth can be adjusted by a sliding mechanism located underneath the seat.



Dynamic

The seating system Dynamic: With autodynamic tilting mechanism. By shifting one's body weight, the lumbar support moves "automatically" in the backrest area. The intensity of ergonomic support can be adjusted underneath the seat.

Seat angle adjustment



Back angle adjustment



Back height adjustment



Dynamic-function



Lumbar support angle adjustment



Lumbar support height adjustment



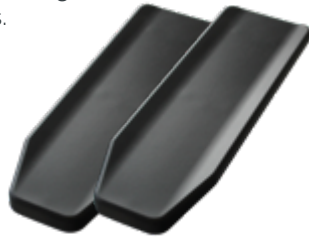
### Linear guides

To give you that extra margin of flexibility: Armrests with linear guides! Applying pressure with your forearm will make the arms "glide" effortlessly in longitudinal direction while letting go will stop them by self-locking mechanism - available as an option.



### Armrests

Made of molded PUR foam - Pleasant to the touch, no slick leatherette cover - for guaranteed secure hold. Suitable for disinfectants.



### Upholstery



**Comfort**

"Perline"  
Page 111



**Dynamic**

"Stamskin top"  
Page 110

## Technical specifications

### Lifting column

- Lifting height of the seat 200 mm
- Lifting height of the armrests 130 mm
- Electromotive adjustment via the foot control elements

### Dimensions

- Max W x L x H (incl. armrests) 750 x 860 x 1270 mm

### Chassis

- Castors ø 100 mm
- 5th castor ø 65 mm
- Central brake acting on all four castors
- Emergency stop button

### Battery unit

- Lead-gel battery, 2 pcs. 12 V, 2,9 A
- Universal battery charger:
  - Input 100 - 240 V
  - Output 24 V

### Sitzsysteme: Comfort ( Dynamic )

- Min. sitting height 600 mm (620 mm)
- Max. sitting height 800 mm (820 mm)
- Seat position adjustment (forward/back) 120 mm
- Seat angle adjustment +6° (+12°)
- Back angle adjustment -10° (-16°)

### Weight

74 kg

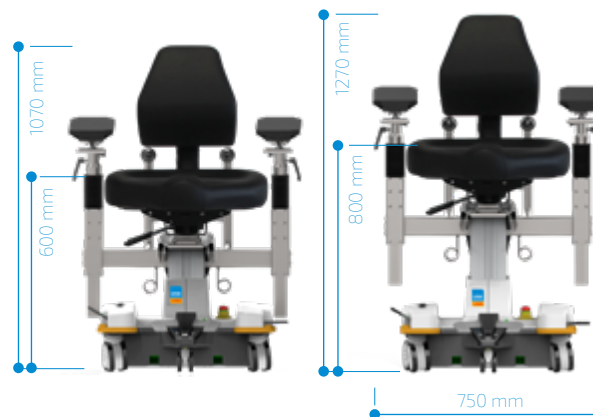
### Max. load

150 kg

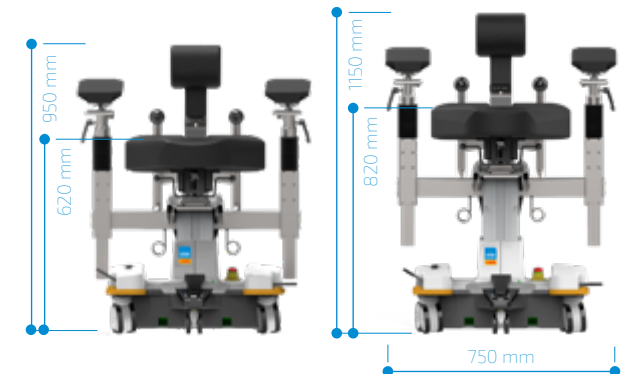
Techn. Änderungen vorbehalten.

## Technical dimensions

### Seating system Comfort



### Seating system Dynamic



PREMIUM  
LINE

# Accessories



**surgiForce**  
Dynamic seat **Item No. :** 2600 0002



**surgiForce**  
Comfort seat **Item No. :** 2600 0004



**surgiForce light**  
Dynamic seat **Item No. :** 2600 0005



**surgiForce light**  
Comfort seat **Item No. :** 2600 0006



Footswitch plate adapter

Item No.: 3317 0000



**surgiForce**  
Arm rest pair with one-hand  
release for neurosurgery  
( angular ), retrofit kit

Item No.: 3351 1010



Arm rest pair with linear  
guide and one-hand release,  
factory-fitted

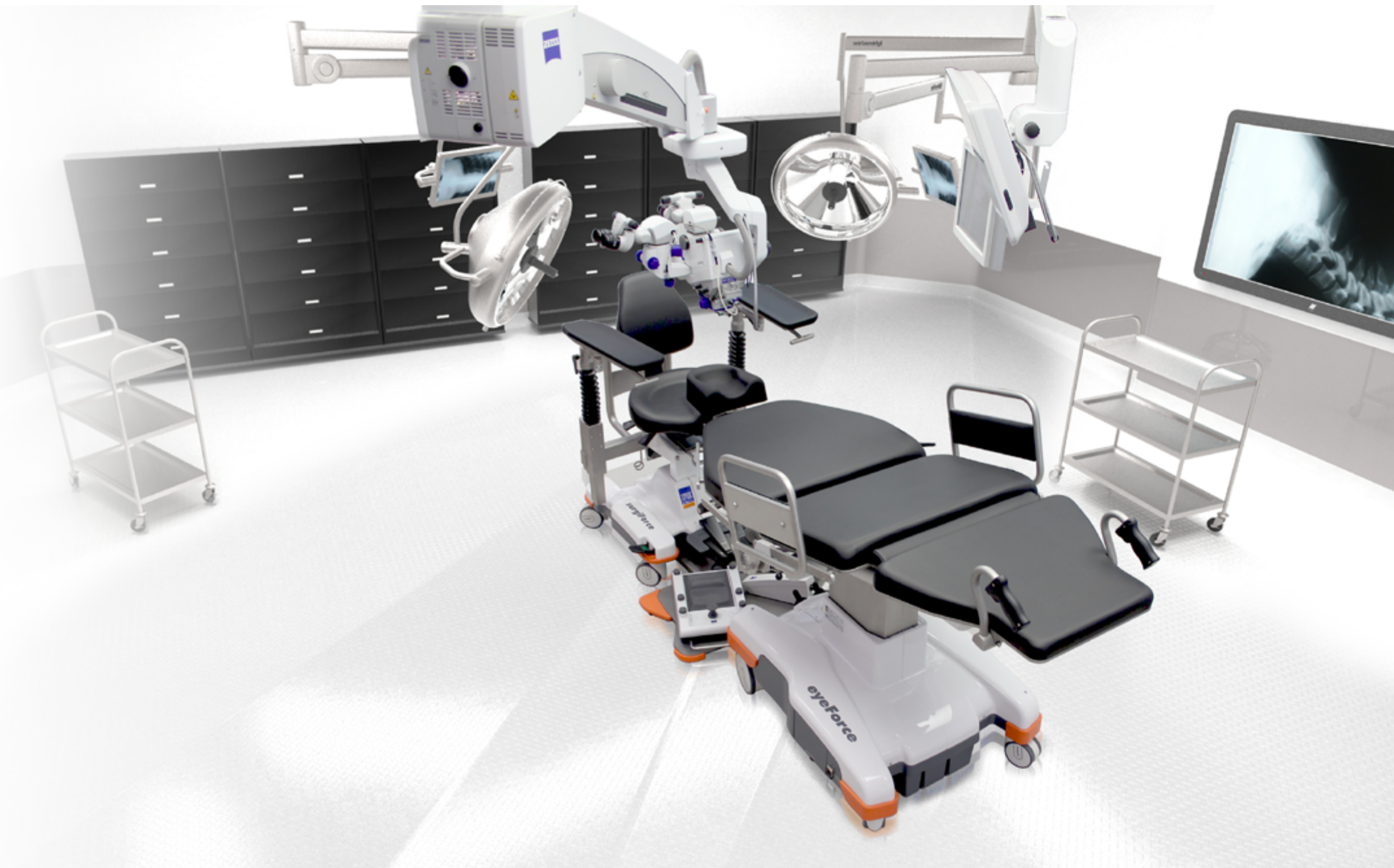
Item No.: 3351 1008



**surgiForce light**  
Seat adjustment mechanism  
for optimum access to the  
operating field,  
factory-fitted

Item No.: 3351 1013

PREMIUM  
LINE



PREMIUM  
LINE

# "Stamskin top"



**surgiForce**

Dynamic seat 2600 0002



**surgiForce light**

Dynamic seat 2600 0005



**surgiTrend**

Dynamic seat 2200 0010



**assistTrend**

2500 0002

+ Item No.: 30370....



F4340-10120  
Item No.: .....023



F4340-07422  
Item No.: .....016



F4340-20130  
Item No.: .....084



F4340-20156  
Item No.: .....207



F4340-50622  
Item No.: .....215



F4340-50623  
Item No.: .....216



F4340-20162  
Item No.: .....205



F4340-20161  
Item No.: .....206



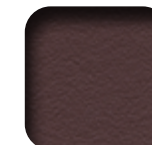
F4340-20150  
Item No.: .....204



F4340-5015  
Item No.: .....198



F4340-07496  
Item No.: .....046



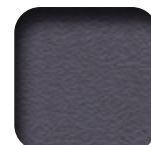
F4340-20129  
Item No.: .....146



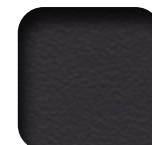
F4340-07432  
Item No.: .....002



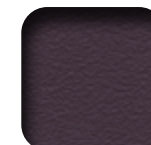
F4340-20154  
Item No.: .....208



F4340-07445  
Item No.: .....030



F4340-00002  
Item No.: .....021



F4340-50621  
Item No.: .....199



F4340-07436  
Item No.: .....020



F4340-50620  
Item No.: .....213



F4340-50454  
Item No.: .....210



F4340-5347  
Item No.: .....209



F4340-20157  
Item No.: .....211



F4340-07459  
Item No.: .....028



F4340-10295  
Item No.: .....044



F4340-07485  
Item No.: .....034



F4340-50618  
Item No.: .....220



F4340-07476  
Item No.: .....035



F4340-07477  
Item No.: .....036



F4340-20127  
Item No.: .....079



F4340-50619  
Item No.: .....214



F4340-07480  
Item No.: .....039



F4340-20149  
Item No.: .....212



F4340-07479  
Item No.: .....038



F4340-07478  
Item No.: .....037



# "Periline"



**surgiForce**  
Comfort seat 2600 0004

**surgiForce light**  
Comfort seat 2600 0006

**surgiTrend**  
Comfort seat 2200 0012

**surgiLine**  
Comfort seat 2200 0013

**assistPro F** 2400 0005

**assistPro H** 2400 0009

**easyPro F** 2400 0010

**easyPro H** 2400 0006

**easyPro R** 2400 0013



kastanie 015817  
Item No.: .....240



light brown 016037  
Item No.: .....239



creme 015812  
Item No.: .....225



weiß 010881  
Item No.: .....224



stein 015813  
Item No.: .....236



saphir 015814  
Item No.: .....231



delft 010766  
Item No.: .....241



antistatisch schwarz  
Item No.: .....223



schwarz 011499  
Item No.: .....235



anthracit 016046  
Item No.: .....234



azur 015815  
Item No.: .....230



aubergine 016041  
Item No.: .....229



lavendel 016042  
Item No.: .....228



rot 010878  
Item No.: .....238



orange 016040  
Item No.: .....237



kiwi 015816  
Item No.: .....233



lime green 016043  
Item No.: .....232



lemon 016039  
Item No.: .....226



safran 010879  
Item No.: .....227

+ Item No.: 30370...

The printed colours may differ slightly from the original colours. If you wish to receive original colour charts, please contact us at [info@ufsk-osys.com](mailto:info@ufsk-osys.com).

*Upgrade your OR to perfection.*



*eyeForce*



*500 XLE*



*500 XLE comfort*



*500 bariatric*



*500 XLS*



*500 ECO*



*400 XL*



*motionLine*



*motionLine-E*



*surgiForce*



*surgiForce light*



*surgiTrend*



*surgiLine*



*stayClean wipes*



*stayClean*



*staySoft*



*stayClean roll*



*assistTrend*



*assistPro F*



*assistPro H*



*easyPro F*



*easyPro H*



*easyPro R*



*assistLine*



*supportLine*



*supportLine plus*



## CONTACT US

UFSK-International OSYS GmbH  
Kirchhoffstraße 1  
93055 Regensburg  
Germany

Phone +49(0)941 78862 15  
Fax +49(0)941 78862 35  
Mail [info@ufsk-osys.com](mailto:info@ufsk-osys.com)  
Web [ufsk-osys.com](http://ufsk-osys.com)

**MADE IN GERMANY**  
Design | Construction | Manufacturing