

## Ruby Theater Demo Event at LMC Tempe

Review by David Das

I had the pleasure of attending the Ruby Theater Demo Event at the LMC Tempe Showroom on Thursday, March 27, 2025.

This is located at 1705 W Ruby Drive, Suite 109, Tempe AZ 85284.



Paul Henningsen and his wife were the hosts for this evening. Paul manages this Showroom with his support team Monday through Saturday.

This was a highly anticipated event for me as it gave me an opportunity to compare Paul's Ruby Theater with John Akers' Cinematic Home AV Theater that I attended on January 16, 2025.

At the very start of the demo Paul explained his design philosophy behind building this system.

Ideally, one needs to have two rooms, one dedicated for 2-channel audio listening and the other designed as a Home Theater for enjoying immersive multi-channel audio and movies.

The acoustic treatment is different in each scenario. Some reflections are desirable for a 2-channel audio setup to add the extra ambience whereas you need a dead room free of all reflections to accurately pinpoint the audio signals moving from speaker to speaker all around you in a well-designed home theater.

What about clients who do not have an extra room? Can a high-end 2 channel audio system be integrated within a multi-channel Home Theater sharing the same room?

Paul designed his Ruby Theater to showcase how this can be accomplished without breaking the budget.

The Ruby Theater measures 17'4" wide x 24'4" long with 12' high ceilings, slightly larger than the 16' x 20' x 7' Cinematic Home AV Theater.



This luxurious interior with polished wood comfortably seats 8 people.

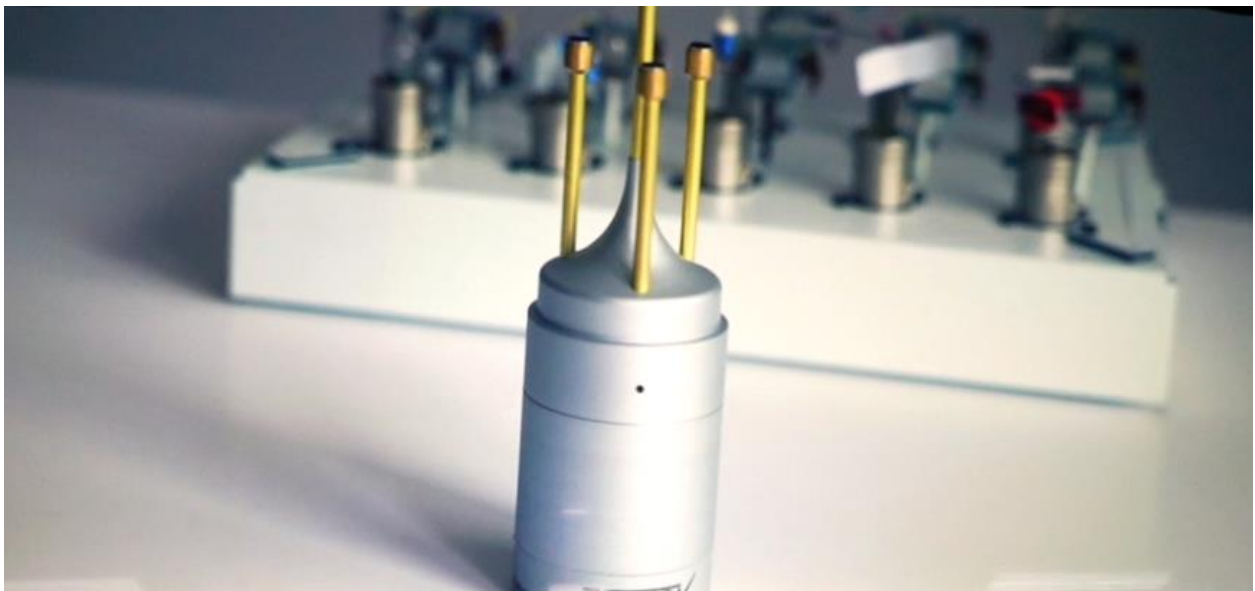
Paul began his demo showing the extra picture clarity you get with Kaleidescape Movies encoded at 65Mb/sec. Streaming videos on the other hand suffer from lack of detail, color accuracy and added noise.

Kaleidescape is the only product that offers visually lossless video quality with no perceptible difference from the master copies released by the movie studios.

This makes a big difference when watching movies on a large projection screen along with true multi-channel lossless audio.



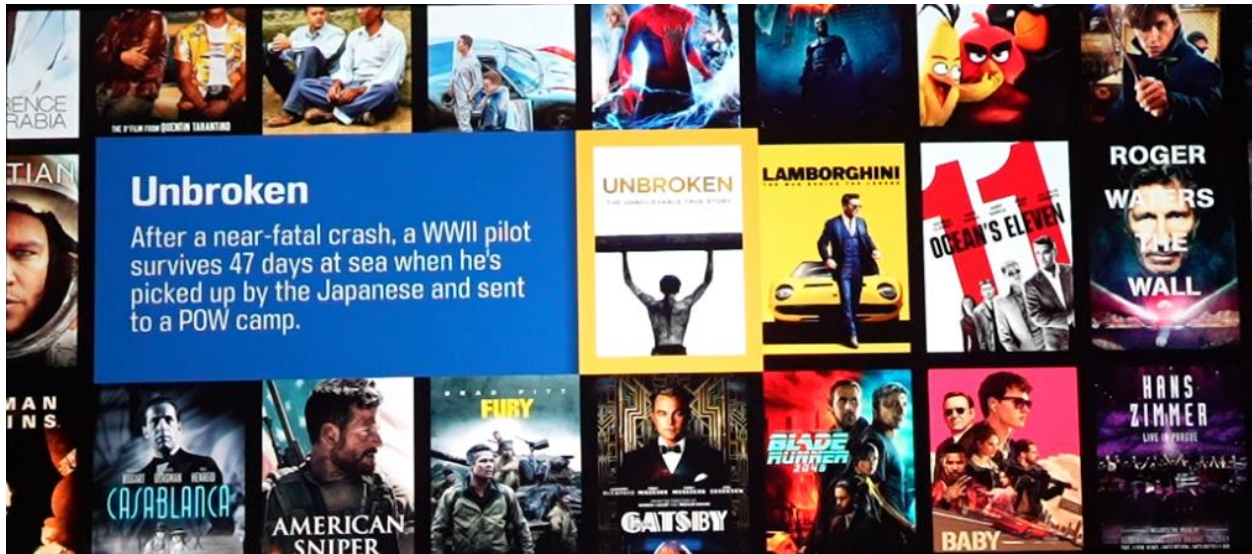
In the next clip Paul demonstrated what a well-executed Dolby ATMOS surround system can sound like.



You are looking at the \$800 TRINNOV measurement microphone used for calibrating the multi-channel setup.

This was put together by the TRINNOV engineers. You immediately felt immersed in a 360 degree sound field with precise imaging.

In the 3<sup>rd</sup> demo clip Paul played a scene from the action movie Unbroken.



You can see the amazing sharpness of the text on the projection screen.

**UNBROKEN**  
THE UNBELIEVABLE TRUE STORY

Rated PG-13 for war violence including intense sequences of brutality, and for brief language; 2 hours 18 minutes, HD download, 2.40 aspect ratio, Color, USA, 2014

**Synopsis**  
After a near-fatal crash, a WWII pilot survives 47 days at sea when he's picked up by the Japanese and sent to a POW camp.

**Genres** Drama, War, Biography

**Cast** Jack O'Connell, Domhnall Gleeson, Takamasa Ishihara, Garrett Hedlund, Finn Wittrock, Jai Courtney

**Director** Angelina Jolie

Return  
Resume Movie  
Play Movie

What stood out immediately was the excellent contrast and black levels which gave the picture a cinematic quality.



After watching Paul's 9.2.6 Dolby ATMOS Ruby Theater you would have no reason to visit your local multiplex.

In the second half of the demo, Paul demonstrated the capabilities of his system in a strict 2-channel audio mode.

He played our club favorite audiophile demo track, "**Keith Don't Go**" by Nils Lofgren. The breathtaking transparency, smoothness, imaging, resolution, transients and bass control on the Wilson Audio ALEXX Vs completely outclassed the Wisdom Audio [Sage Cinema Line 2](#) main speakers at Cinematic AV. You must have free standing speakers to achieve this level of performance. In-wall speakers cannot compete. It is a matter of physics.

Paul surprised us with a demo of what a high-end 2 channel setup can sound on a Q Sound Mix recording with clever phase shifts. He played “**Vogue**” by Madonna. I was startled to hear voices coming from my hard left and right and even behind my ears far away from the physical boundaries of the main speakers. When a speaker is accurately time aligned like these ALEXX Vs, these intentional phase shifts in the mix can fool your brain into believing you are hearing a full blown multi-channel speaker system.

“**Nightshift**” from The Commodores was another demo track that impressed me.

The Wilson Audio ALEXX Vs absolutely aced it when it came to handling 2-channel audio.

This is the left main speaker with a Wilson Audio WATCH Dog Subwoofer next to it.



This is the right main speaker with the second Wilson Audio WATCH Dog Subwoofer.



The Wilson Audio ALEXX Vs are end-game speakers for most audiophiles. You would not find many being used in a home theater setting.

Paul decided to use them to demonstrate how one can enjoy a state of the art 2-channel audio system within a Home Theater build.

The ALEXX Vs have a high sensitivity rating of 92dB with a nominal impedance of 4 ohms. They stand 63" tall and weight 500 lbs each. They can play down to 20 Hz.

The Wilson Audio WATCH Dog subwoofers sporting a single 12" bass driver weighs 281 lbs and brings the bass response of the system down to 15Hz. The extra bass reinforcement helps in a home theater setup.

Paul is using a Wilson Audio Mezzo CSC speaker for his center channel.



The polished surfaces generate some unwanted reflections during movie playback.



The in-wall Focal Surround Speakers are hidden behind the side panels.



There are 2 surround speakers mounted on each side wall along with 2 more on the back wall.



All the electronics are neatly arranged in a 2 column stack on the back wall with easy access to all the controls.

The ornamental wooden panels were designed by Paul to accentuate the Projector Lens.



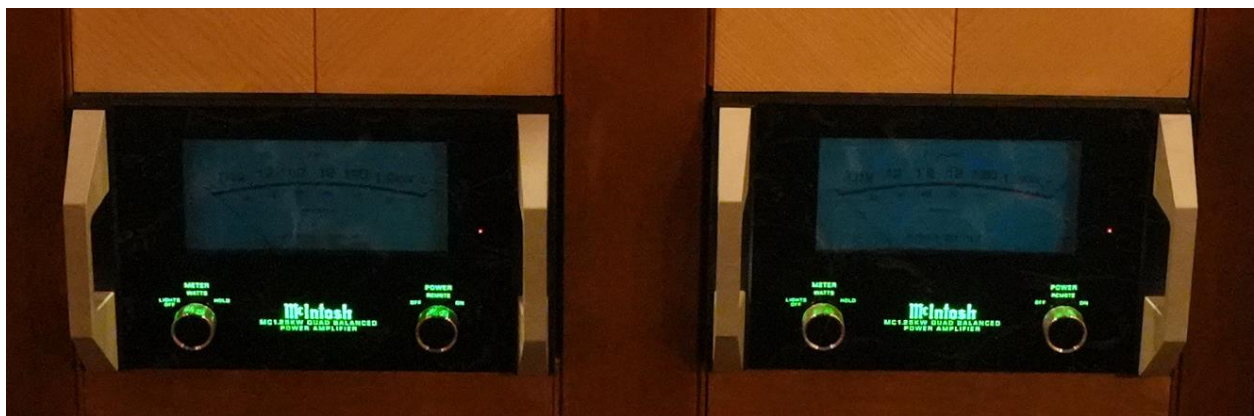
Here is a close up of the Trinnov Audio Altitude 32-24 multi-channel processor and the McIntosh C12000 Pre Amplifier, McIntosh C12000 Controller, McIntosh MC611 Quad Balanced Power Amplifier and McIntosh MC255 Five Channel Power Amplifier.



Here is a close up of the Kaleidescape Movie Player and Sony 4K Bluray player. Below that you see the McIntosh MC8207 Seven Channel Power Amplifier.



At the very bottom of the rack rest two massive McIntosh MC1.2KW Quad Balanced Power Amplifiers. They are powering the 2 ALEXX V Main Speakers.



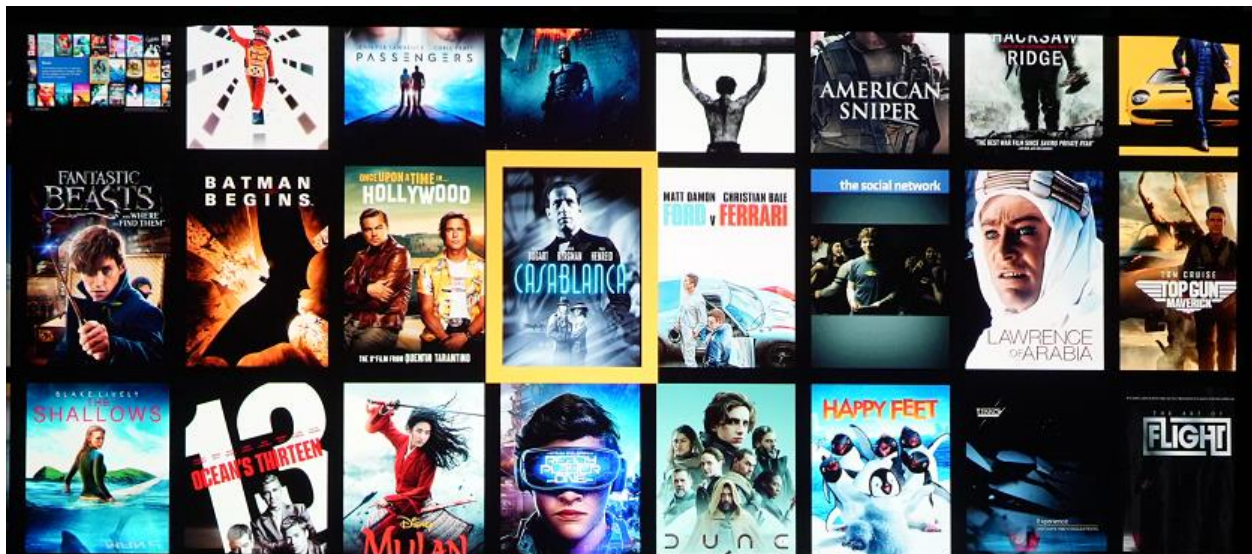
## EQUIPMENT LIST

### PROJECTOR

Paul is using a [Sony VPL-VW995ES](#) native 4K projector that outputs 2,200 Lumens. The [Barco Residential Njord Cinemascope Projector](#) is capable of a scorching bright 9,000 Lumens. John Akers was running that Barco projector at 60% brightness.

I felt the Sony Projector had better contrast and deeper blacks although not quite as bright as the much more expensive Barco Projector.

The text was razor sharp. This is how the Kaleidescape home page appeared on the screen.



### SCREEN

This was a Stewart 175" Diagonal 2.40:1 Masking Screen.

Since Paul is not using the madVR Video Processor, the aspect ratio changes from 2.40:1 to 16:9 needed to be handled by mechanically sliding in the masks to prevent black bars along the sides.

Including a \$6,000 madVR [Envy Core](#) would make it ideal for aspect ratio management.

## MAIN SPEAKERS

Paul designed this theater with the audiophile in mind. He did not cut corners. The [Wilson Audio ALEXX Vs](#) were the stars of the show. They retail for \$157,000 a pair.

## CENTER CHANNEL SPEAKER

Paul chose the [Wilson Audio Mezzo CSC](#). They are the best Center Channel speaker Wilson makes. They retail for \$21,250.

## SURROUND SPEAKERS

The Ruby Theater has 6 [Focal Electra IW1003 BE](#) 3-way In-Wall speakers. They are not in production any more. They can be purchased for \$4,000 each.

## DOLBY HEIGHT SPEAKERS

There are 4 Wisdom Audio [Sage Series ICS7a](#) In-Ceiling speakers. They are priced at \$3,600 each.

## SUBWOOFERS

There are 2 [Wilson Audio WATCH Dog](#) subwoofers priced at \$5,000 each.

This brings the costs of all 15 speakers to a grand total of \$226K.

## VIDEO PROCESSOR

Paul is using the [Trinnov Audio Altitude 32-24](#) unit. This retails for \$42,000.

## AUDIO PROCESSOR

McIntosh [C-12000 Hybrid Preamplifier](#) comprising of the C12000 Controller Module and the C12000 Preamplifier Module. This combo retails for \$16,000.

## MOVIE PLAYER

A Kaleidescape [Stato V Movie Player](#) provides 4K Dolby Vision, HDR10 and SDR playback with lossless audio decoding of Dolby Atmos, DTS:X, Dolby TrueHD and DTS-HD Master Audio.

The internal storage can fit about 10 reference quality 4K movies in standalone mode.



This is the only digital movie player that offers lossless audio with full reference video quality. It retails for \$3995.

## MOVIE SERVER

A Kaleidescape [Terra Prime 8TB Movie Server](#) is used for additional storage.

This retails for \$4,995.

## BLU-RAY PLAYER

There is a Sony 4K Blu-ray Player.

## POWER AMPS FOR MAIN SPEAKERS

McIntosh [MC1.25KW](#) Solid State Monoblocks x2



## POWER AMP FOR SURROUND SPEAKERS

McIntosh [MC255](#) 5-channel Solid State Amplifier.



## POWER AMPS FOR DOLBY HEIGHT SPEAKERS

McIntosh [MC8207](#) 7-channel Solid State Amplifier.



## POWER AMP FOR SUBWOOFERS

Procella Audio [DA5000-DSP](#)



Paul mentioned it cost him around \$485K to build the Ruby Theater. He talked about the special room treatment he had to apply to make this room work for both music and movies.

The cost of this setup is comparable to the Cinematic Home AV Reference Theater. However, while John's objective was to build a no-compromise dedicated Home Theater, Paul was able to include a reference 2-channel audio system in the mix that would appeal to audiophiles. John's in-wall Wisdom Audio speakers cannot compete with the Wilson Audio ALEXX Vs for 2-channel music. The matching array of Wisdom Speakers does do a brilliant job while watching movies in providing that seamless immersive experience.

Paul acknowledged that if he were to start from scratch he would utilize the [WaveForming](#) technology from Trinnov Audio. There is no question that this gives the listener the best immersive experience. He has used WaveForming in several customer projects.

Building a multi-channel home theater around a reference 2-channel audio setup always results in making compromises. The free standing front main speakers, center channel and exposed subwoofers appear distracting while watching a movie. There are unwanted reflections around brightly lit scenes. Ideally, one would want all these speakers hidden behind an acoustically transparent screen like John has done. However, you sacrifice sound quality in 2-channel listening mode.

There is no right or wrong way in approaching your dream theater build. An audiophile will adopt Paul's approach. A movie lover would appreciate the cleaner look and immersive sound of John's reference Home Theater.

A person with enough resources and passion would enjoy both in separate dedicated rooms.

As members of the Arizona Audio Video Club we feel very fortunate to have access to such high-end showrooms utilizing the cutting-edge of audio and video technology.

## A Tour of the LMC Tempe Showroom

Paul has packed his Tempe Showroom with products from several high-end brands.

As you enter the showroom you are greeted with gorgeous set of Sonus Faber floorstanders and McIntosh amplifiers



Along the hallway you see McIntosh, Wilson Audio, Martin Logan and Magnepan speakers.



I call this the Sonus Faber display room.



Here is a close up of the Sonus Faber towers powered by McIntosh amplifiers.



Here you see a pair of massive McIntosh mono blocks against the side wall.



Paul carries the entire line of Sonus Faber speakers.



LMC carries the entire line of Wilson Audio speakers. They can be ordered in any custom finish. Here are some samples.



This is one of their cheaper Wilson Audio setups.



This is the Wilson Audio display room featuring the [AlexiaV](#) speakers.



They are paired with Dan D'Agostino amplifiers.



This is the rear view of the Wilson Audio AlexiaV.



Here is a pair of Wilson Audio [SashaV](#) speakers powered by Burmester amps.



This is the rear view of the Wilson Audio SashaV.



All speakers are connected with Transparent Audio speaker cables.

These are the Wilson Audio [TuneTot](#) bookshelf speakers in Crimson Satin resting on the matching TuneTod Stands.



This is the second Sonus Faber display room.





Paul and his wife were gracious hosts for the evening and had lots of refreshments and drinks.



Nobody wanted to leave and we stayed till 10pm way past their normal closing time.

Paul is always welcoming to all our club members. We should make this into a yearly event to explore and learn from all the advancements in this industry.

On behalf of all club members I wish to thank Paul and his wife for their time and hospitality.

Should you wish to plan a visit, you can contact Paul at [paul@lmche.com](mailto:paul@lmche.com) or call him at (480) 403-0010.

Best regards,

David Das