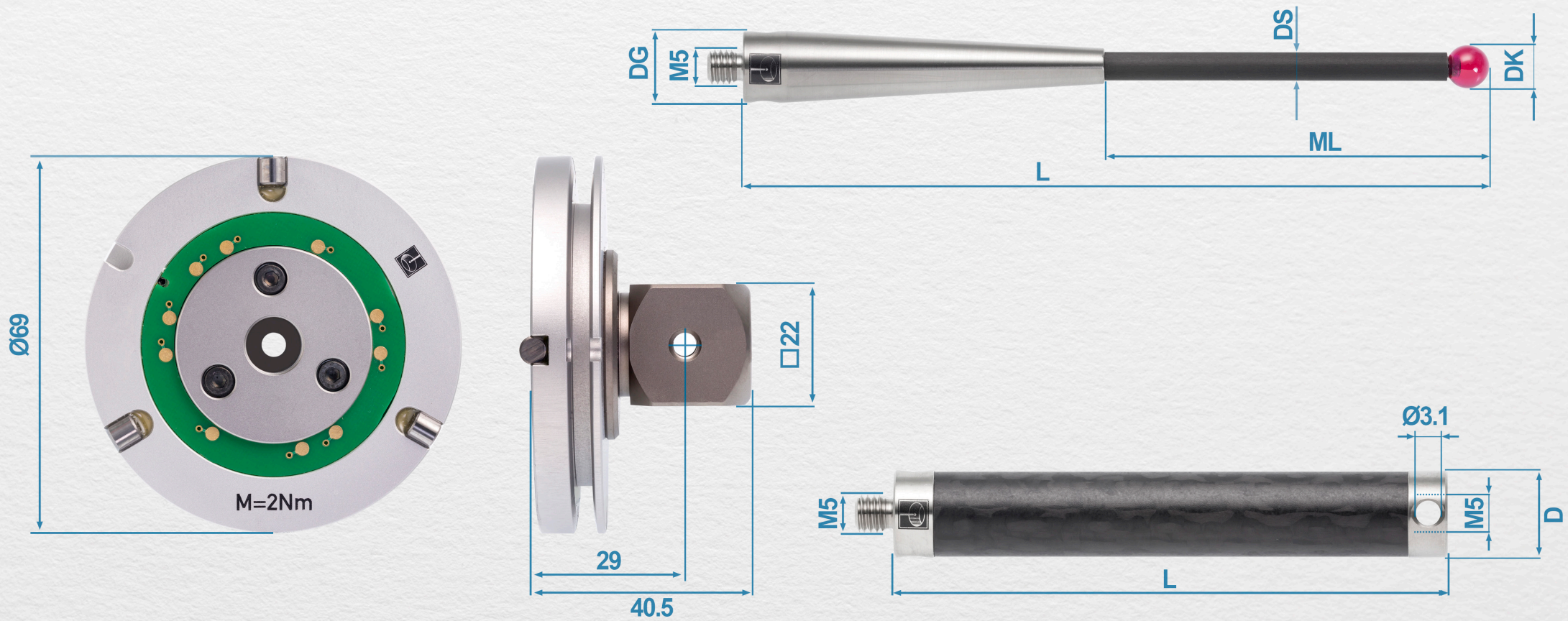


# Styli for Zeiss applications





<b>Contents</b>	Page
<b>Renishaw M5 styli, adaptors and accessories for Zeiss analogue probe systems</b>	<b>5</b>
Carbide styli	5
Styli for ScanMax	6
Tungsten carbide styli with silicon nitride ball	7
Reference styli (red dot)	8
Carbon fibre styli, thermostable	8
Reference styli (red dot)	8
Carbon fibre styli, thermostable	8
Carbon fibre styli thermostable with silicon nitride ball	9
Ceramic styli	9
Micro ball styli	10
Cube star	11
Styli for star configuration, thread length 12.5 mm	11
Long threaded styli, thread length 5 mm	12
Flat washer for star styli	13
Grooved washer for star styli	13
Pin for star styli	14
Styli for holder	14
5 way stylus holder	15
Stylus holder 90°	15
Angle for styli 90°	16
Holder for swivel styli	16
Styli for swivelling configurations	17
Spherical disc styli	17
Spherical disc styli ScanMax	18
Styli for thread measurement	18
Styli pointer	19
Star styli	19
Spherical disc	20
Rotary adaptor	21
Styli with conical stem base	21

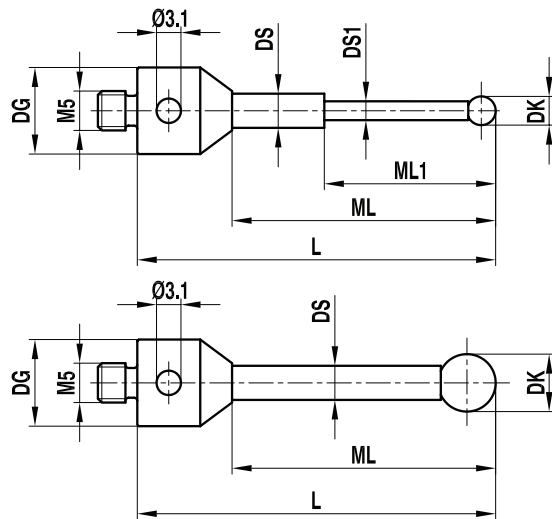
Knuckle, swing range 180°	22
Rotary knuckle, slewing range 360°, swing range 180°	22
Cube, titanium	23
4-way cube, titanium	24
Cube with angle, titanium	24
Double cube, titanium	25
Cube extension, titanium	25
Extension, titanium	26
Extension, thermostable	27
Extension, aluminium	28
Extension, stainless steel	28
Thread measuring gauge	29
Screw for cube and spherical disc	29
Adaptor	30
Adaptor with thread/conical shaft base	30
Holder for digitilisation styli	31
Pin type spanner 2.9 for M5 thread, stainless steel	31
Calibration sphere with stand	31
Magnet base for calibration sphere	32
<b>Renishaw adaptor plates for Zeiss probe heads</b>	<b>33</b>
Adaptor plate for measuring systems VAST/MT	33
Adaptor plate for dynamic systems (ST)	33
Adaptor plate for Prismo dynamic systems (ST)	34
Extension for adaptor plate	35
<b>Renishaw M3 styli, adaptors and accessories for Zeiss analogue probe systems</b>	<b>36</b>
Carbide styli XXT	36
Reference styli XXT (red dot)	37
Carbon fibre styli XXT, thermostable	37
Carbon fibre styli XXT thermostable with silicon nitride ball	38
Carbon fibre clamping styli XXT, thermostable	38
Carbon fibre clamping styli XXT, thermostable with silicon nitride ball	38
Carbon fibre styli for 1/4 star styli XXT thermostable	39
Carbon fibre styli for 1/4 star styli carbon fibre XXT thermostable with silicon nitride ball	39

Carbon fibre styli for 1/2 star styli XXT 90° thermostable	40
Carbon fibre styli for 1/2 star styli XXT 90° thermostable with silicon nitride ball	40
Carbon fibre styli for 1/2 star styli XXT 180° thermostable	41
Carbon fibre styli for 1/2 star styli XXT 180° thermostable with silicon nitride ball	41
Carbon fibre extension XXT	41
Adaptor plate VAST XXT TL1	42
Reference adaptor plate VAST XXT TL1	42
Adaptor plate VAST XXT TL1 with star adaptor	43
Adaptor plate for XXT TL2	43
Reference adaptor plate for XXT TL2	43
Adaptor plate VAST XXT TL3	44
Reference adaptor plate VAST XXT TL3	44
Adaptor plate VAST XXT TL3 with star adaptor	45
Clamping screw XXT	45
Clamping screw XXT with internal M3 thread	45
Cube XXT 90°, 1-way	46
Cube XXT 180°, 2-way	46
Cube XXT, 4-star	46
Cube XXT, 6-star	47
Cube XXT, 8-star	47
Knuckle XXT	48
Carbide styli	49
Ceramic styli	50
Cylinder styli	50
Extension	51
5-way styli holder, rotary	52
Holder for styli 90°	52
Rotary knuckle	53
Adaptor	53

<b>Renishaw tools and accessories for assembly of M2, M3 and M5 styli to Zeiss measuring probe heads</b>	<b>54</b>
Stylus tool	54
Stylus assembly tool	54
Allen keys	54
<b>Renishaw M2 styli, adaptors and accessories for Zeiss analogue probe systems</b>	<b>55</b>
Carbide styli	55
Ceramic styli	55
Stainless steel styli	56
Star styli	56
Styli for star configuration	57
Spherical disc styli	57
Cylinder styli	58
Extension	59
5-way styli holder, rotary	60
5-way styli holder, small/large	60
Holder for styli 90°	61
Rotary knuckle	62
Rotary knuckle, slewing range 360°, swing range 180°	62

**Part and description  
(schematic not shown to scale)**

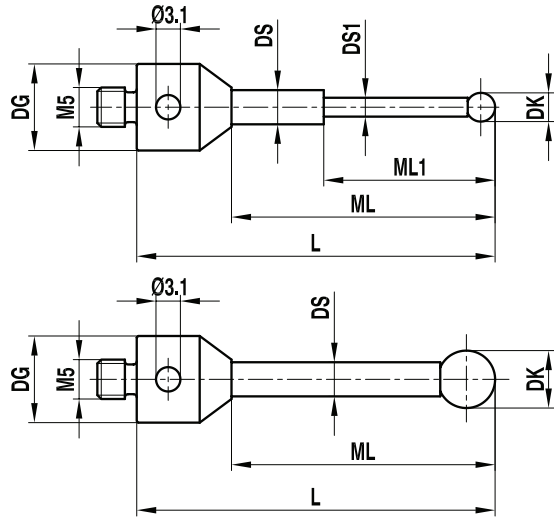
**Carbide styli**  
M5 thread, titanium base, tungsten carbide stem, ruby ball, peg mounted, balls from 12 mm diameter are ceramic



Item number	Renishaw part number	Zeiss part number	DK (mm)	ML1/ML (mm)	DG/D (mm)	L (mm)	DS1/DS (mm)	EAL/B (mm)	Weight (g)
1	A-5555-2388	–	1	10	11	20	0.8		6
2	A-5555-1495	–	1	20	11	30	0.8		6
3	A-5555-1679	–	1	5.0/10.0	11	20	0.8/1.0		6
4	A-5555-1054	–	1	5.0/15.0	11	25	0.8/1.0		6
5	A-5004-4166	–	1	5.0/20.0	11	30	0.8/1.0		6
6	A-5003-0145	–	1.5	8.0/20.0	11	30	1.0/1.5		6
7	A-5555-1077	–	2	10	11	20	1		6
8	A-5555-1563	–	2	15	11	25	1		6
9	A-5555-1060	–	2	20	11	30	1.5		7
10	A-5555-0952	–	2	30	11	40	1.5		7
11	A-5555-0018	602030-9010-000	3	15	11	25	2		4
12	A-5555-0019	600342-8020-000	3	23.5	11	33.5	2		4.5
13	A-5555-0020	602030-9011-000	3	40	11	50	2		5.2
14	A-5555-0021	600342-8021-000	3	48	11	58	2		5.5
15	A-5555-1508	–	3.5	48	11	58	2		6
16	A-5003-7499	–	3.5	65	11	75	2.5		6.5
17	A-5555-1425	–	3.5	85	11	100	2.5		7
18	A-5555-0974	–	4	20	11	30	2		4.4
19	A-5555-0022	600342-8025-000	4	23.5	11	33.5	2		4.5
20	A-5555-0023	602030-9012-000	4	54	11	64	2		5.9
21	A-5555-0498	612030-9661-000	4.5	43	11	53	3.5		8
22	A-5555-0805	–	5	20	11	30	3.5		8
23	A-5555-0024	602030-9013-000	5	40	11	50	3.5		9
24	A-5555-0025	600342-8022-000	5	43	11	53	3.5		9.8
25	A-5555-0026	602030-9015-000	5	65	11	75	3.5		12.5
26	A-5555-1271	–	5	90	11	100	3.5		15
27	A-5555-0027	600342-8026-000	6	44	11	54	3.5		10
28	A-5555-0028	600342-8027-000	7	45	11	55	3.5		10
29	A-5555-0029	600342-8023-000	8	50.5	11	63.5	6		24.8
30	A-5555-0030	–	8	41.5	19	63.5	6		36.7
31	A-5555-0031	–	8	61	11	74	6		29.5
32	A-5555-0032	602030-9016-000	8	62	11	75	6		30
33	A-5555-0033	602030-9017-000	8	87	11	100	6		40
34	A-5555-0034	600342-8024-000	8	101.5	11	114.5	6		45.8
35	A-5555-0035	600342-8124-000	8	92.5	19	114.5	6		57.5
36	A-5555-0946	–	8	137	11	150	6		60
37	A-5555-1618	–	8	175	11	200	6		70
38	A-5555-0036	–	9	51.5	11	64.5	6		26.3
39	A-5555-0037	600342-8128-000	9	42.5	19	64.5	6		36.8
40	A-5555-0038	600342-8029-000	10	52.5	11	65.5	6		25.8

**Part and description**  
(schematic not shown to scale)

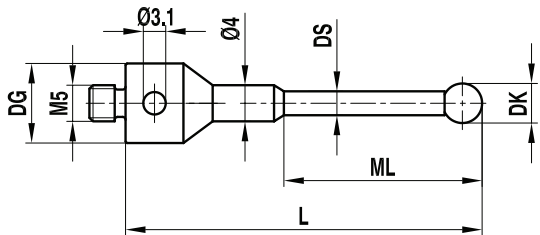
**Carbide styli**  
M5 thread, titanium base, tungsten carbide stem, ruby ball, peg mounted, balls from 12 mm diameter are ceramic



Item number	Renishaw part number	Zeiss part number	DK (mm)	ML1/ML (mm)	DG/D (mm)	L (mm)	DS1/DS (mm)	EAL/B (mm)	Weight (g)
41	A-5555-0039	-	10	43.5	19	65.5	6		37.8
42	A-5555-0040	602030-9018-000	10	105	11	118	6		47.3
43	A-5555-2389	-	10	137	11	150	6		62
44	A-5555-2390	-	10	175	11	200	6		75
45	A-5555-2391	626115-1200-065	12	52	11	65.5	6		28
46	A-5555-1628	626115-1200-118	12	105	11	118	6		49
47	A-5555-2392	-	12	175	11	200	6		76
48	A-5555-2144	-	15	52.5	11	65.5	6		29
49	A-5555-2270	-	15	105	11	118	6		50
50	A-5555-2393	-	15	175	11	200	6		78

**Part and description**  
(schematic not shown to scale)

**Styli for ScanMax**  
M5 thread, stainless steel base, tungsten carbide stem, ruby ball



Item number	Renishaw part number	Zeiss part number	DK (mm)	ML1/ML (mm)	DG/D (mm)	L (mm)	DS1/DS (mm)	EAL/B (mm)	Weight (g)
1	A-5555-2394	000000-1078-483	3	23.5	11	33.5	2		4.5
2	A-5555-3949	000000-1073-344	5	95	11	105	3.5		15
3	A-5555-2395	612030-9649-000	8	50.5	11	63.5	6		25

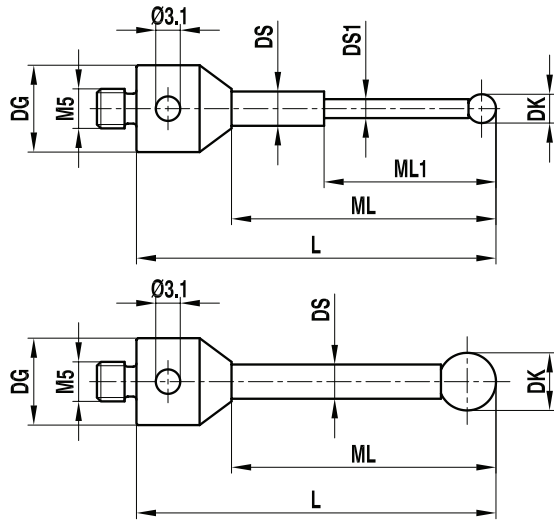


# Renishaw M5 styli, adaptors and accessories for Zeiss analogue probe systems



**Part and description  
(schematic not shown to scale)**

Tungsten carbide styli with silicon nitride ball  
M5 thread, titanium base, tungsten carbide stem,  
silicon nitride ball, cup mounted



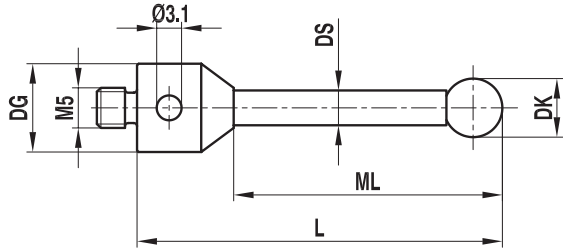
Item number	Renishaw part number	Zeiss part number	DK (mm)	ML1/ML (mm)	DG/D (mm)	L (mm)	DS1/DS (mm)	EAL/B (mm)	Weight (g)
1	A-5555-3777	-	1	5.0/10.0	11	20	0.8/1.0		3.5
2	A-5555-3778	-	1	5.0/15.0	11	25	0.8/1.0		3.5
3	A-5555-3779	-	1	5.0/20.0	11	30	0.8/1.0		3.8
4	A-5555-3780	-	1.5	8.0/20.0	11	30	1.0/1.5		3.5
5	A-5555-3781	-	2	10	11	20	1		3.5
6	A-5555-3782	-	2	15	11	25	1		3.5
7	A-5555-3783	-	2	20	11	30	1.5		3.8
8	A-5555-3784	-	2	30	11	40	1.5		4
9	A-5555-3785	626115-0303-025	3	15	11	25	2		4
10	A-5555-3786	626115-0300-033	3	23.5	11	33.5	2		4.5
11	A-5555-3787	626115-0302-050	3	40	11	50	2		5.3
12	A-5555-3734	626115-0300-058	3	48	11	58	2		5.5
13	A-5555-3788	626115-0400-034	4	23.5	11	33.5	2		4.5
14	A-5555-3789	626115-0401-064	4	54	11	64	2		5.9
15	A-5555-3790	-	5	20	11	30	3.5		8
16	A-5555-3791	626115-0501-050	5	40	11	50	3.5		9
17	A-5555-3792	626115-0501-053	5	43	11	53	3.5		9.8
18	A-5555-3793	626115-0500-075	5	65	11	75	3.5		12.5
19	A-5555-3794	626115-0500-100	5	90	11	100	3.5		18
20	A-5555-3795	-	6	44	11	54	3.5		10
21	A-5555-3796	-	7	45	11	55	3.5		10
22	A-5555-3797	626115-0800-064	8	50.5	11	63.5	6		36.6
23	A-5555-3798	626115-0800-075	8	62	11	75	6		29.4
24	A-5555-3799	626115-0801-100	8	87	11	100	6		39.9
25	A-5555-3800	626115-0800-115	8	101.5	11	114.5	6		45.7
26	A-5555-3801	-	9	51.5	11	64.5	6		26.3
27	A-5555-3802	-	10	52.5	11	65.5	6		25.8
28	A-5555-3803	-	10	105	11	118	6		47.3
29	A-5555-3804	-	10	135	11	150	6		60

# Renishaw M5 styli, adaptors and accessories for Zeiss analogue probe systems



**Part and description  
(schematic not shown to scale)**

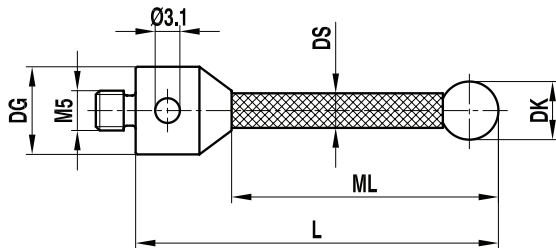
Reference styli (red dot)  
M5 thread, base and stem high strength stainless steel, ruby ball



Item number	Renishaw part number	Zeiss part number	DK (mm)	ML1/ML (mm)	DG/D (mm)	L (mm)	DS1/DS (mm)	EAL/B (mm)	Weight (g)
1	A-5555-3805	600342-8023-010	8	50.5	11	63.5	6		24.8

**Part and description  
(schematic not shown to scale)**

Carbon fibre styli, thermostable  
M5 thread, titanium base, carbon fibre stem  
thermostable, ruby ball, peg mounted



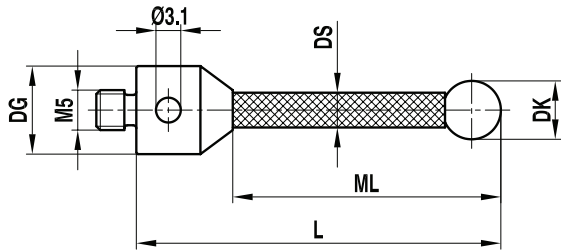
Item number	Renishaw part number	Zeiss part number	DK (mm)	ML1/ML (mm)	DG/D (mm)	L (mm)	DS1/DS (mm)	EAL/B (mm)	Weight (g)
1	A-5555-1916	626105-0300-025	3	15	11	25	2		4
2	A-5555-1847	626105-0300-033	3	23.5	11	33.5	2		4.2
3	A-5555-0730	626105-0300-050	3	40	11	50	2		4.5
4	A-5555-3806	626105-0300-058	3	48	11	58	2		4.9
5	A-5555-1917	626105-0400-033	4	23.5	11	33.5	2		4.2
6	A-5555-0731	626105-0400-064	4	54	11	64	2		4.6
7	A-5555-0732	626105-0510-050	5	40	11	50	3.5		4.8
8	A-5555-2013	-	5	43	11	53	3.5		4.9
9	A-5555-0735	626105-0510-075	5	65	11	75	3.5		5
10	A-5555-0410	626105-0510-100	5	90	11	100	3.5		5.4
11	A-5555-0733	626105-0610-054	6	44	11	54	3.5		4.9
12	A-5555-0734	626105-0710-055	7	45	11	55	3.5		4.9
13	A-5555-3807	626105-0820-063	8	50.5	11	63.5	6		7
14	A-5555-3997	626105-0820-075	8	62	11	75	6		7.3
15	A-5555-1918	626105-0820-100	8	87	11	100	6		7.5
16	A-5555-3808	626105-0820-114	8	101.5	11	114.5	6		9.5
17	A-5555-9361	626105-0820-150	8	137	11	150	6		11
18	A-5555-1112	626105-0820-200	8	187	11	200	6		13
19	A-5555-3809	-	9	51.5	11	64.5	6		7.2
20	A-5555-1027	626105-1020-065	10	52.5	11	65.5	6		8
21	A-5555-3998	626105-1020-118	10	105	11	118	6		14.5
22	A-5555-0643	626105-1020-150	10	137	11	150	6		16
23	A-5555-0644	626105-1020-200	10	187	11	200	6		19

# Renishaw M5 styli, adaptors and accessories for Zeiss analogue probe systems



**Part and description  
(schematic not shown to scale)**

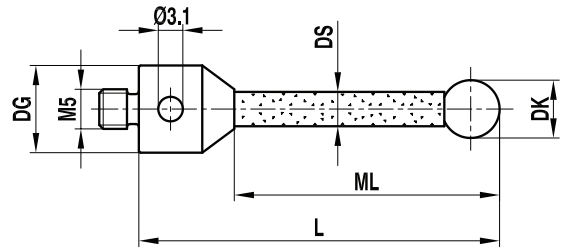
Carbon fibre styli thermostable with silicon nitride ball  
M5 thread, titanium base, carbon fibre stem  
thermostable, silicon nitride ball, peg mounted up to  
6 mm diameter



Item number	Renishaw part number	Zeiss part number	DK (mm)	ML1/ML (mm)	DG/D (mm)	L (mm)	DS1/DS (mm)	EAL/B (mm)	Weight (g)
1	A-5555-3812	626105-0301-025	3	15	11	25	2		4
2	A-5555-1828	626105-0301-033	3	23.5	11	33.5	2		4.2
3	A-5555-3813	626105-0301-050	3	40	11	50	2		4.5
4	A-5555-3814	626105-0301-058	3	48	11	58	2		4.9
5	A-5555-1828	626105-0301-033	4	23.5	11	33.5	2		4.2
6	A-5555-2396	626105-0401-064	4	54	11	64	2		4.6
7	A-5555-3817	626105-0511-050	5	40	11	50	3.5		4.8
8	A-5555-2397	-	5	43	11	53	3.5		4.9
9	A-5555-2012	626105-0511-075	5	65	11	75	3.5		5
10	A-5555-1065	626105-0511-100	5	90	11	100	3.5		5.4
11	A-5555-2398	-	6	44	11	54	3.5		4.9
12	A-5555-2399	-	7	45	11	55	3.5		4.9
13	A-5555-0720	626105-0821-063	8	50.5	11	63.5	6		7
14	A-5555-2400	-	8	62	11	75	6		7.3
15	A-5555-3820	626105-0821-100	8	87	11	100	6		7.5
16	A-5555-3821	626105-0821-114	8	101.5	11	114.5	6		9.5
17	A-5555-1169	626105-0821-150	8	137	11	150	6		11
18	A-5555-1179	626105-0821-200	8	187	11	200	6		13
19	A-5555-2402	-	9	51.5	11	64.5	6		7.2
20	A-5555-2403	626105-1021-065	10	52.5	11	65.5	6		8
21	A-5555-3824	626105-1021-118	10	105	11	118	6		14.5
22	A-5555-3825	626105-1021-150	10	137	11	150	6		16
23	A-5555-1171	626105-1021-200	10	187	11	200	6		19

**Part and description  
(schematic not shown to scale)**

Ceramic styli  
M5 thread, titanium base, ceramic stem, ruby ball, cup  
mounted



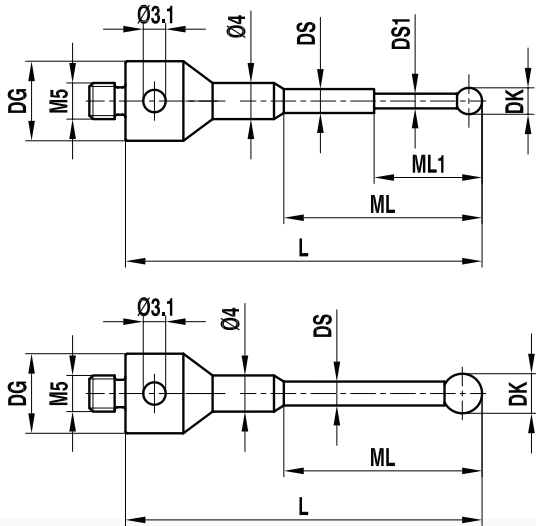
Item number	Renishaw part number	Zeiss part number	DK (mm)	ML1/ML (mm)	DG/D (mm)	L (mm)	DS1/DS (mm)	EAL/B (mm)	Weight (g)
1	A-5555-0041	600342-8013-000	5	43	11	53	3.5		4.6
2	A-5555-0042	600342-8016-000	6	44	11	54	3.5		4.7
3	A-5555-0043	600342-8017-000	7	45	11	55	3.5		5
4	A-5555-0044	600342-8014-000	8	50.5	11	63.5	6		8.3
5	A-5555-0049	-	8	41.5	19	63.5	6		33
6	A-5555-0050	600342-8115-000	8	101.5	11	114.5	6		11.8
7	A-5555-0051	-	8	92.5	19	114.5	6		38
8	A-5555-0045	600342-8118-000	9	51.5	11	64.5	6		8.4
9	A-5555-0046	-	9	42.5	19	64.5	6		21
10	A-5555-0047	600342-8019-000	10	52.5	11	65.5	6		9
11	A-5555-0048	-	10	43.5	19	65.5	6		38

# Renishaw M5 styli, adaptors and accessories for Zeiss analogue probe systems



**Part and description  
(schematic not shown to scale)**

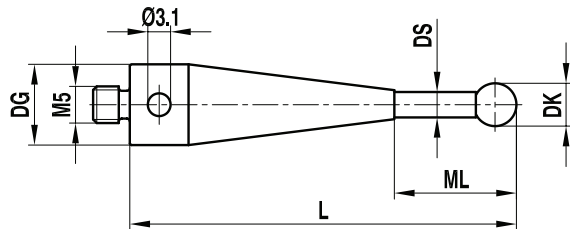
Micro ball styli  
M5 thread, stainless steel base, tungsten carbide stem, ruby ball, peg mounted except for ball diameters 0.2 mm – 0.6 mm



Item number	Renishaw part number	Zeiss part number	DK (mm)	ML1/ML (mm)	DG/D (mm)	L (mm)	DS1/DS (mm)	EAL/B (mm)	Weight (g)
1	A-5555-2404	–	0.2	2.3/12.0	11	32	0.18/1.0		6.5
2	A-5555-2405	–	0.25	2.3/12.0	11	32	0.18/1.0		6.5
3	A-5555-2407	–	0.3	2.3/12.0	11	32	0.2/1.0		6.5
4	A-5555-1773	–	0.5	2.5/12.0	11	32	0.3/1.0		6.5
5	A-5555-1095	000000-1120-407	0.6	4.6/12.0	11	32	0.4/1.0		6.5
6	A-5555-0052	602030-8060-000	0.8	4.8/12.0	11	32	0.6/1.0		6.8
7	A-5555-0053	602030-8061-000	1	5.0/12.0	11	32	0.8/1.0		6.8
8	A-5555-0054	602030-8062-000	1.35	12	11	32	1		6.9
9	A-5555-0055	602030-8063-000	1.35	19	11	44	1		7.5
10	A-5555-0056	602030-8064-000	1.5	12	11	32	1		6.5
11	A-5555-0057	602030-8065-000	1.5	19	11	44	1		7.5
12	A-5555-0058	602030-8066-000	2	12	11	32	1.5		7.3
13	A-5555-0059	602030-8067-000	2	19	11	44	1.5		8
14	A-5555-0060	602030-8068-000	2	33	11	58	1.5		8
15	A-5555-0061	602030-8069-000	2.5	12	11	32	1.5		7.3
16	A-5555-0062	602030-8070-000	2.5	19	11	44	1.5		8
17	A-5555-0063	602030-8071-000	2.5	33	11	58	1.5		8

**Part and description  
(schematic not shown to scale)**

Micro ball styli  
M5 thread, conic titanium base, tungsten carbide stem, ruby ball, peg mounted



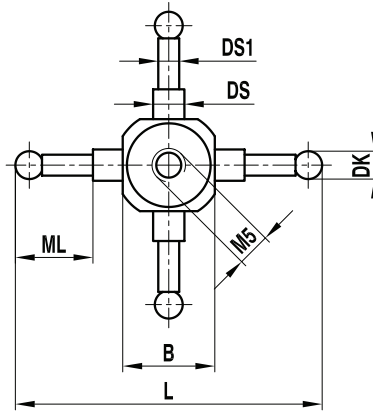
Item number	Renishaw part number	Zeiss part number	DK (mm)	ML1/ML (mm)	DG/D (mm)	L (mm)	DS1/DS (mm)	EAL/B (mm)	Weight (g)
1	A-5555-0064	602030-9019-000	1	5	11	55	0.8		11.9
2	A-5555-0065	602030-9020-000	1.5	5	11	55	1		11.9
3	A-5555-0066	602030-9021-000	2	5	11	55	1.5		11.9
4	A-5555-0067	–	2.5	5	11	55	2		11.9
5	A-5555-0068	602030-9023-000	3.5	10	11	55	2.5		11.9

# Renishaw M5 styli, adaptors and accessories for Zeiss analogue probe systems



**Part and description  
(schematic not shown to scale)**

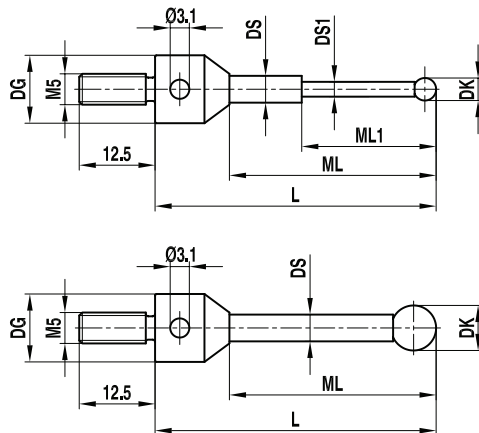
Cube star  
M5 thread, titanium cube base, tungsten carbide stems,  
ruby balls



Item number	Renishaw part number	Zeiss part number	DK (mm)	ML1/ML (mm)	DG/D (mm)	L (mm)	DS1/DS (mm)	EAL/B (mm)	Weight (g)
1	A-5555-0069	-	1	7		45	0.8/2.0	15	17.3
2	A-5555-0070	602030-9025-000	1.5	7.5		45	1.0/2.0	15	17.3
3	A-5555-0071	-	2	7.5		45	1.5/2.0	15	17.3
4	A-5555-0072	602030-9027-000	2.5	8		45	1.5/2.0	15	17.3
5	A-5555-0073	-	3.5	15		45	2	15	17.3

**Part and description  
(schematic not shown to scale)**

Styli for star configuration, thread length 12.5 mm  
M5 thread, stainless steel base, tungsten carbide stem,  
ruby ball, peg mounted except for ball diameters  
0.3 mm – 0.6 mm



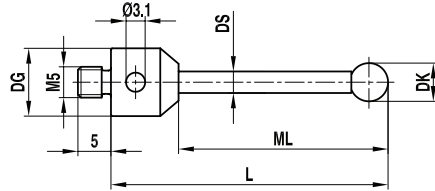
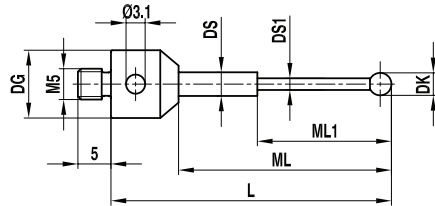
Item number	Renishaw part number	Zeiss part number	DK (mm)	ML1/ML (mm)	DG/D (mm)	L (mm)	DS1/DS (mm)	EAL/B (mm)	Weight (g)
1	A-5555-0084	600342-8250-000	0.3	2.3/12.8	11	21.8	0.2/1.0		6
2	A-5555-0085	600342-8251-000	0.5	2.5/13.0	11	22	0.3/1.0		6
3	A-5555-0086	600342-8252-000	0.6	4.6/13.1	11	22.1	0.4/1.0		6
4	A-5555-0087	600342-8253-000	0.8	4.8/13.3	11	22.3	0.6/1.0		6
5	A-5555-0088	600342-8254-000	1	5.0/13.5	11	22.5	0.8/1.0		6
6	A-5555-0078	600342-8200-000	1.35	23.85	11	32.85	1		6
7	A-5555-0079	600342-8201-000	1.5	24	11	33	1		7
8	A-5555-0080	600342-8202-000	2	24.5	11	33.5	1.5		7
9	A-5555-0081	600342-8203-000	2.5	25	11	34	1.5		7
10	A-5555-2408	-	3	16.5	11	25.5	2		7
11	A-5555-0082	600342-8221-000	3	16.5	19	34.5	2		20
12	A-5555-2409	-	5	25.5	11	34.5	3.5		9
13	A-5555-0083	600342-8222-000	5	25.5	19	43.5	3.5		23

# Renishaw M5 styli, adaptors and accessories for Zeiss analogue probe systems



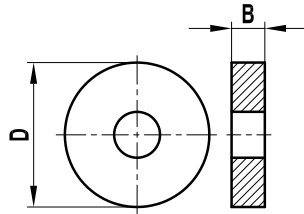
**Part and description  
(schematic not shown to scale)**

Long threaded styli, thread length 5 mm  
M5 thread, stainless steel base, tungsten carbide stem,  
ruby ball, peg mounted except for ball diameters 0.3 mm  
– 0.6 mm

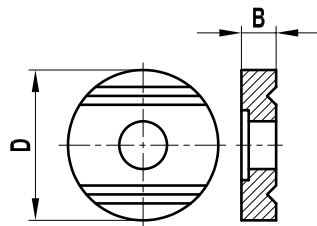


Item number	Renishaw part number	Zeiss part number	DK (mm)	ML1/ML (mm)	DG/D (mm)	L (mm)	DS1/DS (mm)	EAL/B (mm)	Weight (g)
1	A-5555-0331	626115-0030-022	0.3	2.3/12.8	11	21.8	0.2/1.0		6
2	A-5555-1157	626115-0050-022	0.5	2.5/13.0	11	22	0.3/1.0		6
3	A-5555-1842	626115-0060-022	0.6	4.6/13.1	11	22.1	0.4/1.0		6
4	A-5555-1844	626115-0080-022	0.8	4.8/13.3	11	22.3	0.6/1.0		6
5	A-5555-1843	626115-0100-022	1	5.0/13.5	11	22.5	0.8/1.0		6
6	A-5555-0799	626115-0140-033	1.35	23.85	11	32.85	1		6
7	A-5555-9324	626115-0150-033	1.5	24	11	33	1		7
8	A-5555-0965	–	1.5	7.0/24.0	11	33	1.0/1.5		7
9	A-5555-3826	–	2	24.5	11	33.5	1		7
10	A-5555-9325	602030-8066-000	2	24.5	11	33.5	1.5		7
11	A-5555-3827	–	2.5	25	11	34	1		7
12	A-5555-0686	602030-8066-000	2.5	25	11	34	1.5		7
13	A-5555-3828	–	3	16.5	11	25.5	2		9
14	A-555-2444	–	5	25.5	11	34.5	3.5		9

Part and description (schematic not shown to scale)	Item number	Renishaw part number	Zeiss part number	DK (mm)	ML1/ML (mm)	DG/D (mm)	L (mm)	DS1/DS (mm)	EAL/B (mm)	Weight (g)
Flat washer for star styli M5 thread, stainless steel	1	A-5555-0089	600341-0140-000			11			1.5	1
	2	A-5555-0090	600341-0141-000			19			2	4



Part and description (schematic not shown to scale)	Item number	Renishaw part number	Zeiss part number	DK (mm)	ML1/ML (mm)	DG/D (mm)	L (mm)	DS1/DS (mm)	EAL/B (mm)	Weight (g)
Grooved washer for star styli M5 thread, stainless steel	1	A-5555-0091	600341-0150-000			11			2	1
	2	A-5555-0092	600341-0151-000			19			4	7

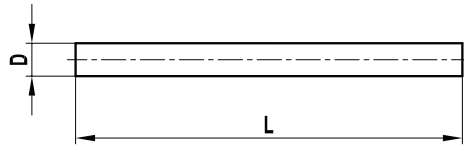


# Renishaw M5 styli, adaptors and accessories for Zeiss analogue probe systems



**Part and description  
(schematic not shown to scale)**

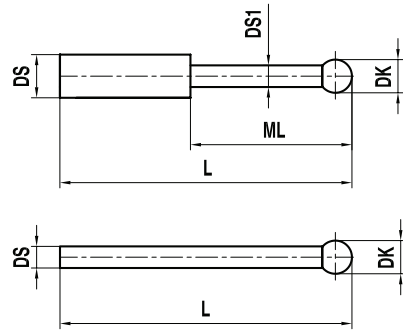
Pin for star styli  
M5 thread, tungsten carbide



Item number	Renishaw part number	Zeiss part number	DK (mm)	ML1/ML (mm)	DG/D (mm)	L (mm)	DS1/DS (mm)	EAL/B (mm)	Weight (g)
1	A-5555-0093	600341-0520-000			1	10			1
2	A-5555-0094	600341-0521-000			1.5	10			1
3	A-5555-0095	600341-0522-000			2	18			1
4	A-5555-0096	600341-0523-000			3.5	18			3

**Part and description  
(schematic not shown to scale)**

Styli for holder  
Tungsten carbide stem, ruby ball, peg mounted  
except for ball diameters 0.2 mm – 0.6 mm



Item number	Renishaw part number	Zeiss part number	DK (mm)	ML1/ML (mm)	DG/D (mm)	L (mm)	DS1/DS (mm)	EAL/B (mm)	Weight (g)
1	A-5555-1141	–	0.2	2.3		15.2	0.18/1.0		1
2	A-5555-2410	–	0.25	2.35		15.25	0.18/1.0		1
3	A-5555-0108	600341-8450-000	0.3	2.3		15.3	0.2/1.0		1
4	A-5555-2411	–	0.4	2.5		15.5	0.3/1.0		1
5	A-5555-0109	600341-8451-000	0.5	2.5		15.5	0.3/1.0		1
6	A-5555-0110	600341-8452-000	0.6	4.6		15.6	0.4/1.0		1
7	A-5555-1277	–	0.7	4.6		15.7	0.4/1.0		1
8	A-5555-0111	600341-8453-000	0.8	4.8		15.8	0.6/1.0		1
9	A-5555-0107	600341-8454-000	1	5		16	0.8/1.0		1
10	A-5555-0112	600341-8500-000	1.35			26.35	1		1
11	A-5555-0113	600341-8501-000	1.5			26.5	1		1
12	A-5555-2412	–	2			27	1		1
13	A-5555-0114	600341-8502-000	2			27	1.5		1
14	A-5555-2413	–	2.5			27.5	1.0		1
15	A-5555-0115	600341-8503-000	2.5			27.5	1.5		1
16	A-5555-0116	600341-8510-000	3			38	2		2
17	A-5555-0117	600341-8511-000	5			45	3.5		6

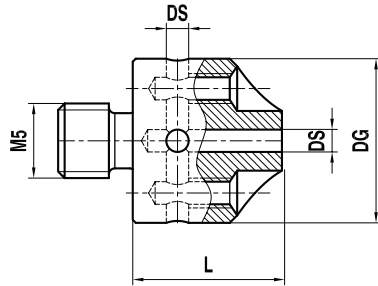


# Renishaw M5 styli, adaptors and accessories for Zeiss analogue probe systems



**Part and description  
(schematic not shown to scale)**

5 way stylus holder  
M5 thread, stainless steel

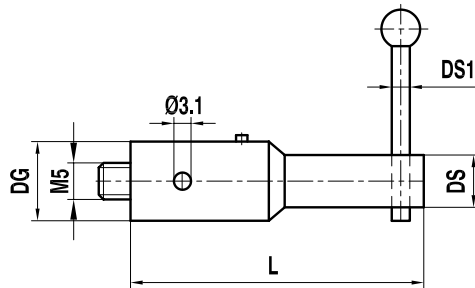


Item number	Renishaw part number	Zeiss part number	DK (mm)	ML1/ML (mm)	DG/D (mm)	L (mm)	DS1/DS (mm)	EAL/B (mm)	Weight (g)
1	A-5555-0105	600341-8367-000			11	10	1		3.2
2	A-5555-0106	600341-8368-000			11	10	1.5		3.2
3	A-5555-1245	626115-5000-199			11	10	2		3.2

Fits with styli A-5555-1141 - A-5555-0116

**Part and description  
(schematic not shown to scale)**

Stylus holder 90°  
M5 thread, stainless steel



Item number	Renishaw part number	Zeiss part number	DK (mm)	ML1/ML (mm)	DG/D (mm)	L (mm)	DS1/DS (mm)	EAL/B (mm)	Weight (g)
1	A-5555-0104	600341-8160-000			11	45	1-1.5/6		16

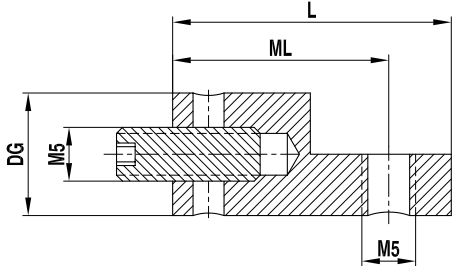
Fits with styli A-5555-1141 through to A-5555-0115

Renishaw M5 styli, adaptors and accessories for Zeiss analogue probe systems



**Part and description  
(schematic not shown to scale)**

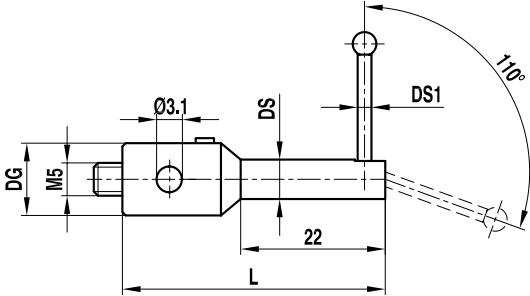
Angle for styli 90°  
M5 thread, titanium



Item number	Renishaw part number	Zeiss part number	DK (mm)	ML1/ML (mm)	DG/D (mm)	L (mm)	DS1/DS (mm)	EAL/B (mm)	Weight (g)
1	A-5555-1097	626105-6901-001		17	11	22.5			6

**Part and description  
(schematic not shown to scale)**

Holder for swivel styli  
M5 thread, stainless steel



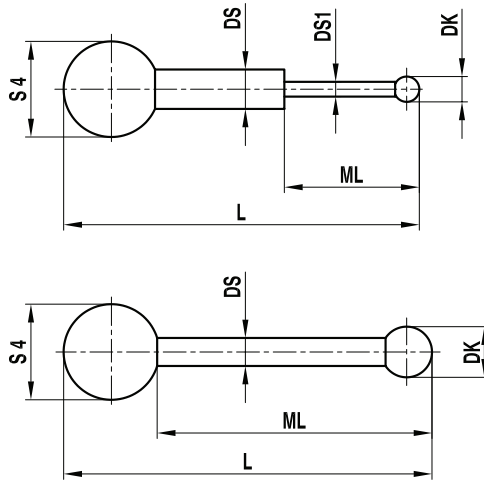
Item number	Renishaw part number	Zeiss part number	DK (mm)	ML1/ML (mm)	DG/D (mm)	L (mm)	DS1/DS (mm)	EAL/B (mm)	Weight (g)
1	A-5555-0118	600341-8180-000			11	40	1-1.5/6		15

# Renishaw M5 styli, adaptors and accessories for Zeiss analogue probe systems



**Part and description  
(schematic not shown to scale)**

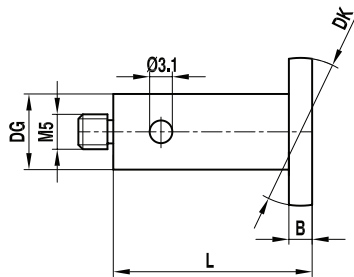
**Styli for swivelling configurations**  
M5 thread, S4 steel ball, tungsten carbide stem, ruby ball, peg mounted



Item number	Renishaw part number	Zeiss part number	DK (mm)	ML1/ML (mm)	DG/D (mm)	L (mm)	DS1/DS (mm)	EAL/B (mm)	Weight (g)
1	A-5555-0119	600341-8183-000	1	5	1	17.5	0.8/1.0		1
2	A-5555-0120	600341-8185-000	2	24.5	1.5	28.5	1.5		1

**Part and description  
(schematic not shown to scale)**

**Spherical disc styli**  
M5 thread, aluminium base, high strength steel disc



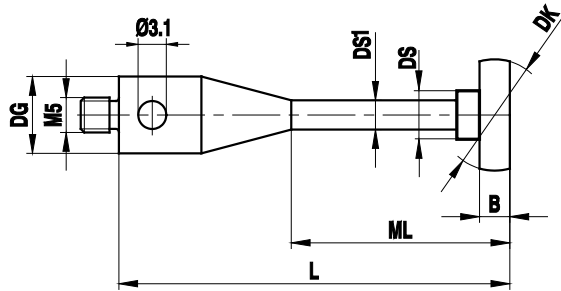
Item number	Renishaw part number	Zeiss part number	DK (mm)	ML1/ML (mm)	DG/D (mm)	L (mm)	DS1/DS (mm)	EAL/B (mm)	Weight (g)
1	A-5555-0121	600341-8090-000	10		7	21.5		1.5	3
2	A-5555-0122	600341-8095-000	15		10	21.5		1.5	6
3	A-5555-0124	000000-1165-629	15		7	40		1	5
4	A-5555-0123	602030-8091-000	20		7	60		1	8

# Renishaw M5 styli, adaptors and accessories for Zeiss analogue probe systems



**Part and description  
(schematic not shown to scale)**

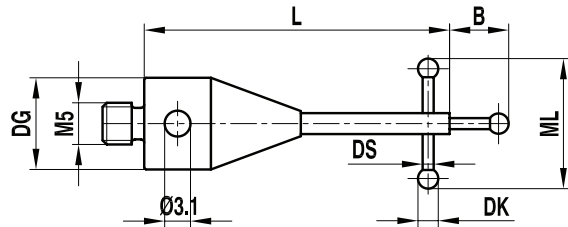
Spherical disc styli ScanMax  
M5 thread, titanium base, high strength steel disc



Item number	Renishaw part number	Zeiss part number	DK (mm)	ML1/ML (mm)	DG/D (mm)	L (mm)	DS1/DS (mm)	EAL/B (mm)	Weight (g)
1	A-5555-2415	632001-8209-000	10	55	11	65	3.5/5.5	1	11
2	A-5555-2416	626115-1505-065	15	55	11	65	3.5/5.5	1	18
3	A-5555-2417	632001-8207-000	20	55	11	65	3.5/5.5	1	19
4	A-5555-2418	632001-8208-000	25	55	11	65	3.5/10.0	1	22
5	A-5555-2419	632001-8210-000	30	55	11	65	3.5/10.0	2	39
6	A-5555-2420	632001-8213-000	40	55	11	65	3.5/10.0	2	57
7	A-5555-2421	000000-1019-819	10	55	11	65	3.5/5.5	2	17
8	A-5555-2422	000000-1019-820	15	55	11	65	3.5/5.5	2	20
9	A-5555-2423	000000-1019-822	20	55	11	65	3.5/5.5	2	25
10	A-5555-2424	000000-1019-824	25	55	11	65	3.5/10.0	2	32

**Part and description  
(schematic not shown to scale)**

Styli for thread measurement  
M5 thread, stainless steel base, tungsten carbide stems, ruby balls, peg mounted except for 0.5 mm ball diameters



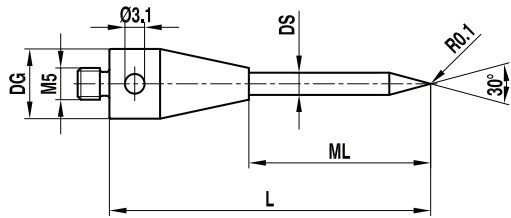
Item number	Renishaw part number	Zeiss part number	DK (mm)	ML1/ML (mm)	DG/D (mm)	L (mm)	DS1/DS (mm)	EAL/B (mm)	Weight (g)
1	A-5555-3999	–	0.5	3.5	11	40	0.4	1.9	7
2	A-5555-0077	–	0.8	5	11	40	0.6	1.9	7
3	A-5555-0074	–	1.35	9	11	40	1	2	11
4	A-5555-0076	–	1.8	10	11	40	1	2	12
5	A-5555-0075	–	2.3	12	11	40	1	2.5	13

# Renishaw M5 styli, adaptors and accessories for Zeiss analogue probe systems



**Part and description  
(schematic not shown to scale)**

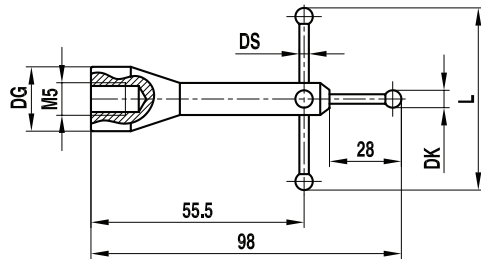
**Styli pointer**  
M5 thread, titanium base, tungsten carbide stem



Item number	Renishaw part number	Zeiss part number	DK (mm)	ML1/ML (mm)	DG/D (mm)	L (mm)	DS1/DS (mm)	EAL/B (mm)	Weight (g)
1	A-5555-0216	600342-8051-000	30°	39	11	61	3.5		12

**Part and description  
(schematic not shown to scale)**

**Star styli**  
M5 thread, aluminium base, tungsten carbide stems, ruby balls, peg mounted



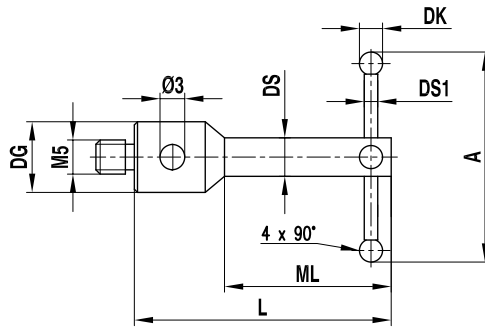
Item number	Renishaw part number	Zeiss part number	DK (mm)	ML1/ML (mm)	DG/D (mm)	L (mm)	DS1/DS (mm)	EAL/B (mm)	Weight (g)
1	A-5555-0215	600331-8093-000	5		19	80	3.5		70

# Renishaw M5 styli, adaptors and accessories for Zeiss analogue probe systems



**Part and description  
(schematic not shown to scale)**

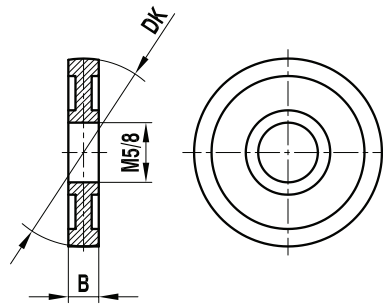
**Star styli**  
M5 thread, stainless steel base, tungsten carbide stems, rudy balls, peg mounted except for 0.6 mm ball diameters



Item number	Renishaw part number	Zeiss part number	DK (mm)	ML1/ML (mm)	DG/D (mm)	L (mm)	DS1/DS (mm)	A (mm)	Weight (g)
1	A-5555-1153	–	0.6	30	11	40	0.4/4.0	8	9
2	A-5555-1135	–	0.8	30	11	40	0.6/4.0	8	9
3	A-5555-3839	–	1	30	11	40	0.8/4.0	8	9

**Part and description  
(schematic not shown to scale)**

**Spherical disc**  
M5 thread, high strength steel



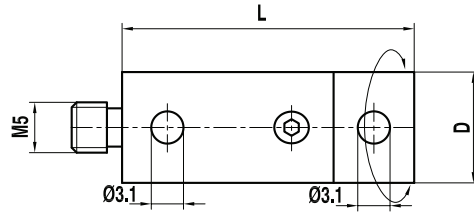
Item number	Renishaw part number	Zeiss part number	DK (mm)	Thread/bore hole (mm)	EAL/B (mm)	Weight (g)
1	A-5555-0196	602030-0004-000	15	M5	4	5
2	A-5555-0197	602030-0005-000	20	M5	4	9
3	A-5555-0198	602030-0006-000	30	M5	4	21
4	A-5555-0199	602030-0007-000	40	M5	5	42
5	A-5555-0200	602030-0008-000	50	M5	5	64
6	A-5555-0201	602030-0009-000	60	M5	5	89
7	A-5555-0203	602030-0011-000	20	8	4	8
8	A-5555-0204	600341-0200-000	20	8	2	4
9	A-5555-0205	600341-0203-000	30	8	4	10
10	A-5555-0206	600341-0204-000	40	8	4	21
11	A-5555-0207	600341-0205-000	50	8	5	36
12	A-5555-0208	600341-0206-000	60	8	6	59

# Renishaw M5 styli, adaptors and accessories for Zeiss analogue probe systems



**Part and description  
(schematic not shown to scale)**

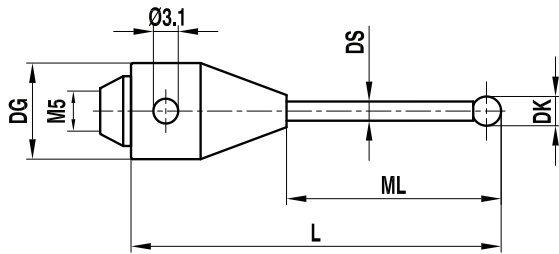
Rotary adaptor  
M5 thread, titanium



Item number	Renishaw part number	Zeiss part number	DK (mm)	ML1/ML (mm)	DG/D (mm)	L (mm)	DS1/DS (mm)	EAL/B (mm)	Weight (g)
1	A-5555-0713	612030-9737-000			11	29			13
2	A-5555-0099	602030-9095-000			18	30			43

**Part and description  
(schematic not shown to scale)**

Styli with conical stem base  
M5 thread, titanium base, tungsten carbide stem,  
ruby ball, peg mounted



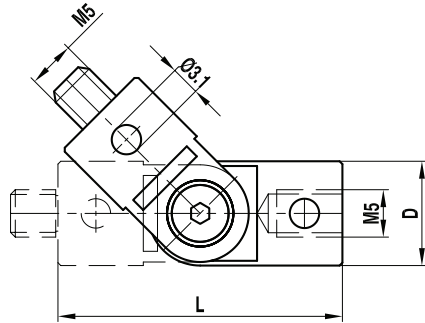
Item number	Renishaw part number	Zeiss part number	DK (mm)	ML1/ML (mm)	DG/D (mm)	L (mm)	DS1/DS (mm)	EAL/B (mm)	Weight (g)
1	A-5555-0001	–	3	21.5	19	50	2		23
2	A-5555-0002	–	3	35	19	75	2		30
3	A-5555-0003	–	3	50	19	75	2		22
4	A-5555-0004	–	3	18	19	115	2		56
5	A-5555-0005	–	5	35	19	75	3.5		34
6	A-5555-0006	–	5	50	19	75	3.5		28
7	A-5555-0007	–	5	60	19	100	3.5		38
8	A-5555-0008	–	8	57	19	80	6		45
9	A-5555-0009	–	8	60	19	100	6		57
10	A-5555-0010	–	8	56.5	19	115	6		68
11	A-5555-0011	–	8	100	19	140	6		74

# Renishaw M5 styli, adaptors and accessories for Zeiss analogue probe systems

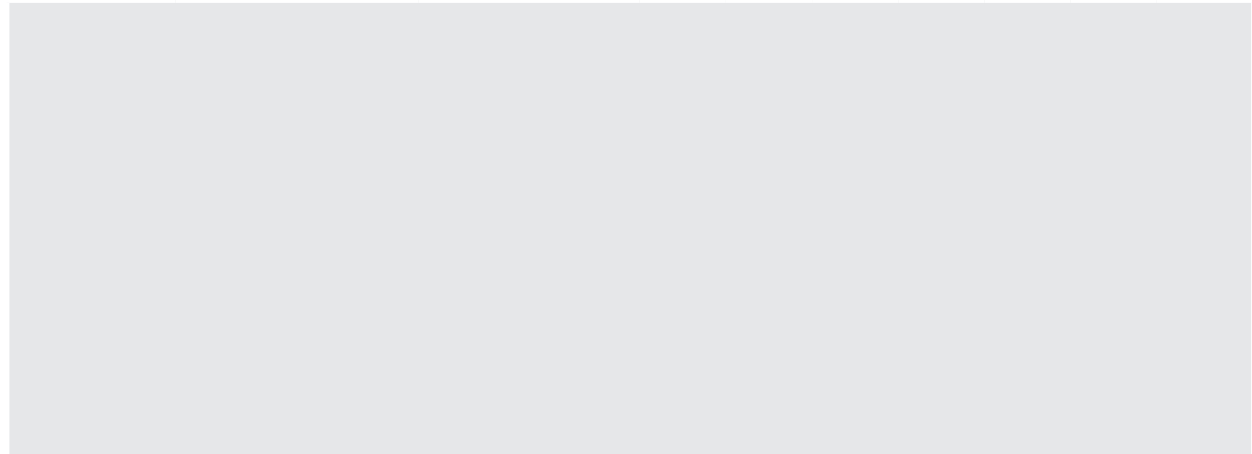


**Part and description  
(schematic not shown to scale)**

Knuckle, swing range 180°  
M5 thread, titanium

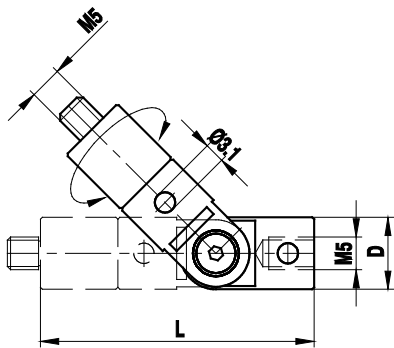


Item number	Renishaw part number	Zeiss part number	DK (mm)	ML1/ML (mm)	DG/D (mm)	L (mm)	DS1/DS (mm)	EAL/B (mm)	Weight (g)
1	A-5555-0218	600342-9002-000			11	30			11.2
2	A-5555-0219	600342-9003-000			18	36			37.2

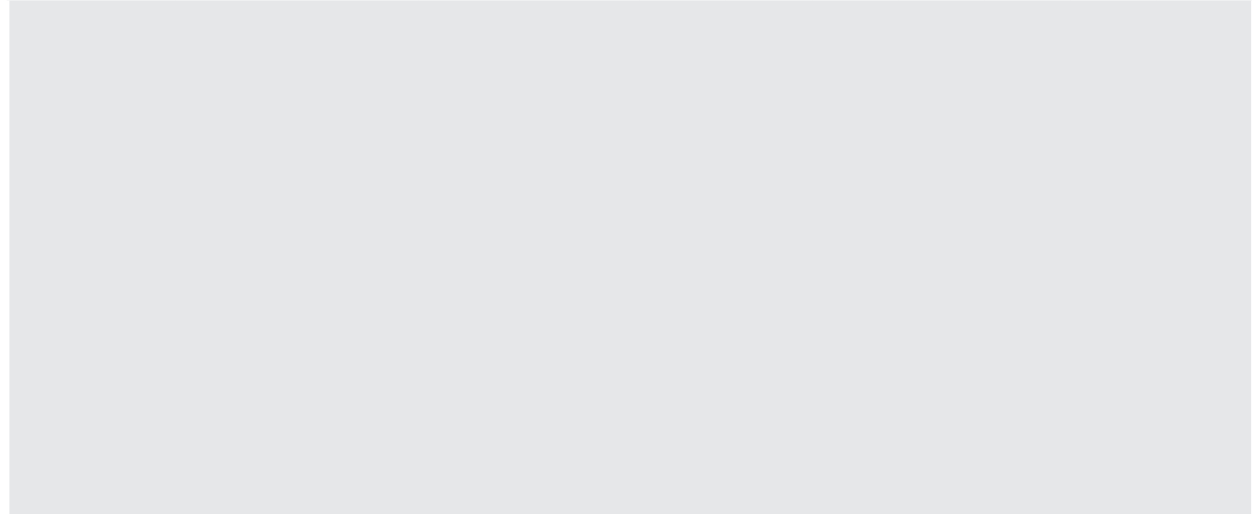


**Part and description  
(schematic not shown to scale)**

Rotary knuckle, slewing range 360°, swing range 180°  
M5 thread, titanium



Item number	Renishaw part number	Zeiss part number	DK (mm)	ML1/ML (mm)	DG/D (mm)	L (mm)	DS1/DS (mm)	EAL/B (mm)	Weight (g)
1	A-5003-1093	–			11	51			19
2	A-5555-3841	–			18	58			58



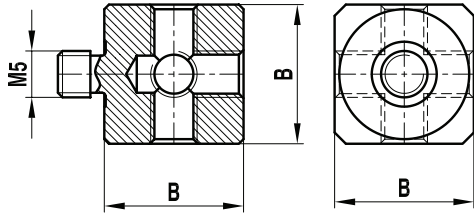


# Renishaw M5 styli, adaptors and accessories for Zeiss analogue probe systems



**Part and description  
(schematic not shown to scale)**

Cube  
M5 thread, titanium

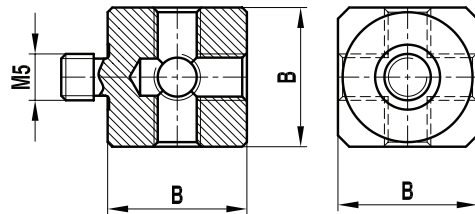


\*Screwset enclosed

Item number	Renishaw part number	Zeiss part number	DK (mm)	ML1/ML (mm)	DG/D (mm)	L (mm)	DS1/DS (mm)	EAL/B (mm)	Weight (g)
1	A-5555-0189	600341-8361-000						15	12.6
2	A-5555-1478*	626115-6110-001						15	12.6
3	A-5555-0190	600341-8002-000						20	31.5
4	A-5004-2109*	626115-6110-003						20	31.5

**Part and description  
(schematic not shown to scale)**

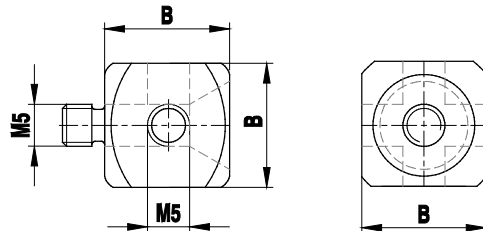
Cube  
M5 thread, aluminium



Item number	Renishaw part number	Zeiss part number	DK (mm)	ML1/ML (mm)	DG/D (mm)	L (mm)	DS1/DS (mm)	EAL/B (mm)	Weight (g)
1	A-5555-0191	602030-8363-000						15	7.5
2	A-5555-0192	602030-8362-000						20	20

**Part and description  
(schematic not shown to scale)**

Cube  
M5 thread, titanium



Item number	Renishaw part number	Zeiss part number	DK (mm)	ML1/ML (mm)	DG/D (mm)	L (mm)	DS1/DS (mm)	EAL/B (mm)	Weight (g)
1	A-5555-1892	626115-6110-002						15	13

# Renishaw M5 styli, adaptors and accessories for Zeiss analogue probe systems



Part and description (schematic not shown to scale)	Item number	Renishaw part number	Zeiss part number	DK (mm)	ML1/ML (mm)	DG/D (mm)	L (mm)	DS1/DS (mm)	EAL/B (mm)	Weight (g)
<b>4-way cube</b> M5 thread, titanium 	1	A-5555-1551	–						15	13

Part and description (schematic not shown to scale)	Item number	Renishaw part number	Zeiss part number	DK (mm)	ML1/ML (mm)	DG/D (mm)	L (mm)	DS1/DS (mm)	EAL/B (mm)	Weight (g)
<b>Cube with angle</b> M5 thread, titanium 	1	A-5555-2425	–					87.5	15	13
	2	A-5555-2426	–					85	15	13.4
	3	A-5555-2427	–					82.5	15	13.8
	4	A-5555-2428	–					80	15	14.2
	5	A-5555-2429	–					77.5	15	14.6
	6	A-5555-2430	–					75	15	15
	7	A-5555-2431	–					72.5	15	15.4
	8	A-5555-2432	–					70	15	15.8
	9	A-5555-2433	–					67.5	15	16.2
	10	A-5555-2434	–					65	15	16.6
	11	A-5555-2435	–					62.5	15	17
	12	A-5555-2436	–					60	15	17.4
	13	A-5555-2437	–					57.5	15	17.8
	14	A-5555-2438	–					55	15	18.2
	15	A-5555-2439	–					52.5	15	18.6
	16	A-5555-2440	–					50	15	19
	17	A-5555-2441	–					47.5	15	19.4
	18	A-5555-2442	–					45	15	19.8

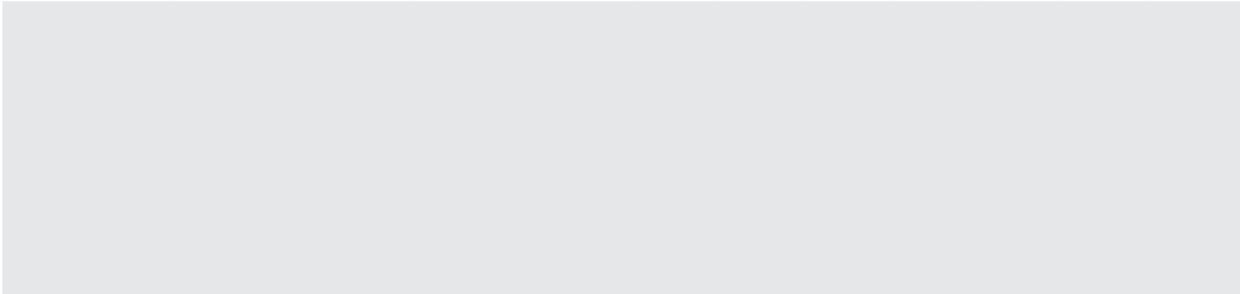
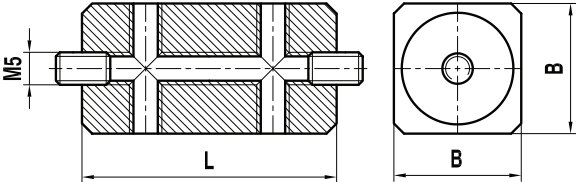
Renishaw M5 styli, adaptors and accessories for Zeiss analogue probe systems



**Part and description  
(schematic not shown to scale)**

Item number	Renishaw part number	Zeiss part number	DK (mm)	ML1/ML (mm)	DG/D (mm)	L (mm)	DS1/DS (mm)	EAL/B (mm)	Weight (g)
1	A-5555-0194	-				40		20	64

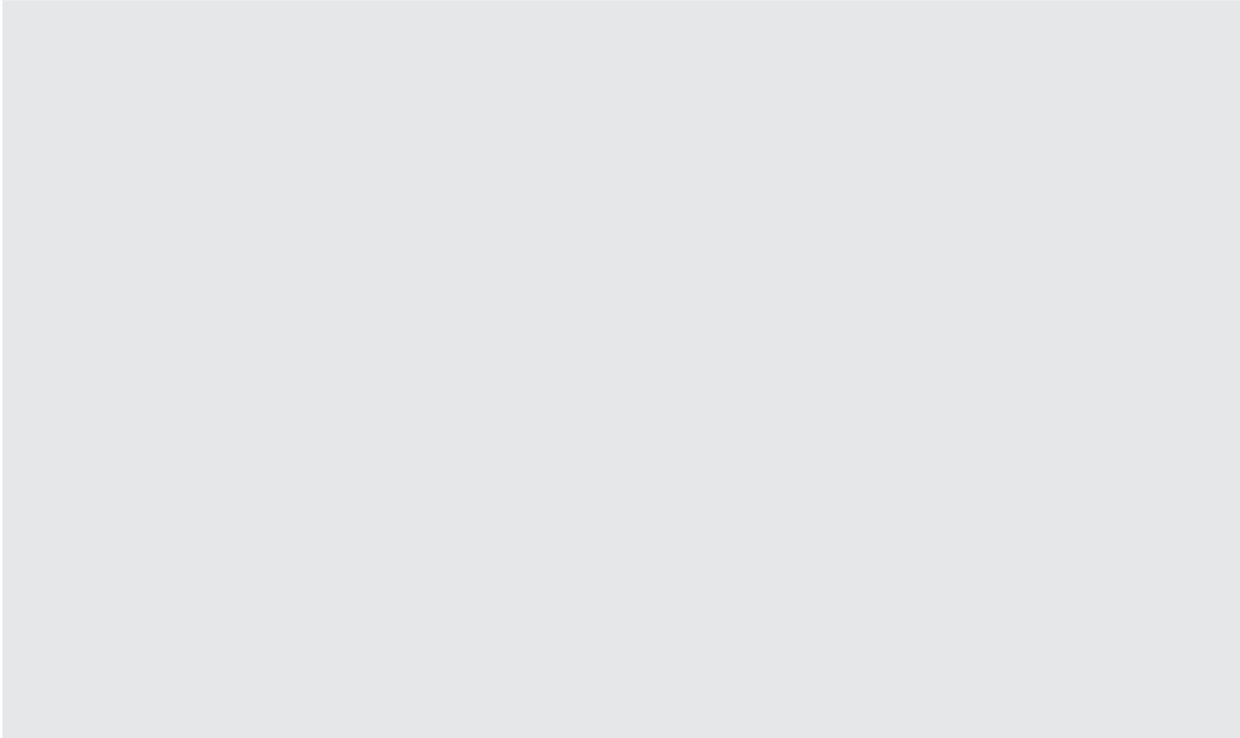
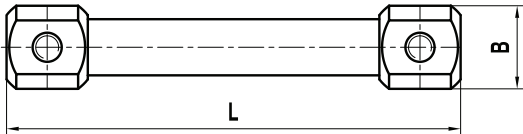
Double cube  
M5 thread, titanium



**Part and description  
(schematic not shown to scale)**

Item number	Renishaw part number	Zeiss part number	DK (mm)	ML1/ML (mm)	DG/D (mm)	L (mm)	DS1/DS (mm)	EAL/B (mm)	Weight (g)
1	A-5555-0217	-				120		20	87

Cube extension  
M5 thread, titanium

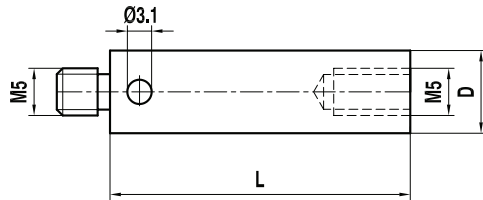


# Renishaw M5 styli, adaptors and accessories for Zeiss analogue probe systems



**Part and description  
(schematic not shown to scale)**

**Extension  
M5 thread, titanium**



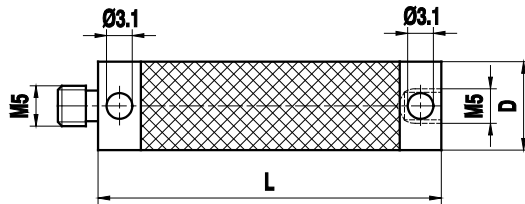
Item number	Renishaw part number	Zeiss part number	DK (mm)	ML1/ML (mm)	DG/D (mm)	L (mm)	DS1/DS (mm)	EAL/B (mm)	Weight (g)
1	A-5555-0143	602030-9044-000			11	10			3.6
2	A-5555-0144	602030-9045-000			11	15			5.7
3	A-5555-0145	602030-9046-000			11	20			7.8
4	A-5555-0146	602030-9047-000			11	25			9.7
5	A-5555-0950	00000-1251-674			11	30			12.1
6	A-5555-0619	—			11	35			13.9
7	A-5555-0148	602030-9049-000			11	40			16.1
8	A-5555-0150	602030-9051-000			11	50			12.7
9	A-5555-0152	602030-9053-000			11	60			13.6
10	A-5555-0154	602030-9055-000			11	75			15
11	A-5555-0156	602030-9057-000			11	80			15.6
12	A-5555-0158	602030-9059-000			11	90			16.2
13	A-5555-0160	602030-9061-000			11	100			17.3
14	A-5555-0162	602030-9063-000			11	120			19.4
15	A-5555-0164	602030-9065-000			11	150			22.4
16	A-5555-0147	602030-9048-000			18	25			27.3
17	A-5555-0149	602030-9050-000			18	40			44.7
18	A-5555-0151	602030-9052-000			18	50			36.3
19	A-5555-0153	602030-9054-000			18	60			38.3
20	A-5555-0155	602030-9056-000			18	75			42.8
21	A-5555-0157	602030-9058-000			18	80			44.2
22	A-5555-0159	602030-9060-000			18	90			47.3
23	A-5555-0161	602030-9062-000			18	100			49.4
24	A-5555-0163	602030-9064-000			18	120			55.1
25	A-5555-0165	602030-9066-000			18	150			65
26	A-5555-0166	602030-9067-000			18	200			79.3
27	A-5555-0167	602030-9068-000			18	250			92.4
28	A-5555-0168	602030-9069-000			18	300			107

# Renishaw M5 styli, adaptors and accessories for Zeiss analogue probe systems



**Part and description  
(schematic not shown to scale)**

**Extension**  
M5 thread, thermostable black carbon fibre,  
titanium ends



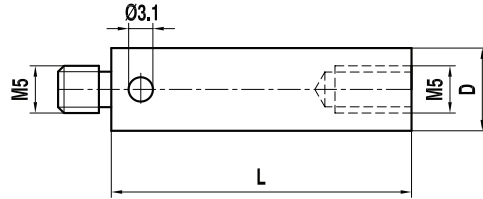
Item number	Renishaw part number	Zeiss part number	DK (mm)	ML1/ML (mm)	DG/D (mm)	L (mm)	DS1/DS (mm)	EAL/B (mm)	Weight (g)
1	A-5555-0647	626107-1040-100			11	40			9
2	A-5555-0648	626107-1050-100			11	50			10
3	A-5555-0649	626107-1060-100			11	60			11
4	A-5555-0623	626107-1070-100			11	70			11
5	A-5555-0650	626107-1080-100			11	80			12
6	A-5555-0651	626107-1090-100			11	90			13
7	A-5555-0652	626107-1100-100			11	100			14
8	A-5555-0425	626107-1020-100			11	120			15
9	A-5555-0424	626107-1150-100			11	150			17
10	A-5555-0653	626107-1180-100			11	180			19
11	A-5555-0654	626107-1200-100			11	200			21
12	A-5555-0655	626107-1250-100			11	250			24
13	A-5555-0642	626107-1300-100			11	300			27
14	A-5555-0656	626107-1400-100			11	400			34
15	A-5555-0520	626107-2040-100			20	40			26
16	A-5555-0657	626107-2050-100			20	50			28
17	A-5555-0658	626107-2060-100			20	60			29
18	A-5555-0621	626107-2080-100			20	80			32
19	A-5555-0659	626107-2100-100			20	100			34
20	A-5555-0660	626107-2120-100			20	120			37
21	A-5555-0661	626107-2150-100			20	150			41
22	A-5555-0662	626107-2180-100			20	180			45
23	A-5555-0663	626107-2200-100			20	200			48
24	A-5555-0427	626107-2250-100			20	250			55
25	A-5555-0664	626107-2300-100			20	300			62
26	A-5555-0665	626107-2400-100			20	400			75
27	A-5555-0667	626107-2500-100			20	500			89
28	A-5555-0668	626107-2600-100			20	600			103

# Renishaw M5 styli, adaptors and accessories for Zeiss analogue probe systems



**Part and description  
(schematic not shown to scale)**

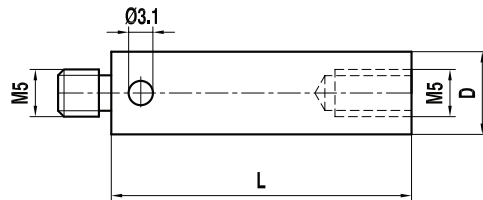
**Extension**  
M5 thread, aluminium, stainless steel ends



Item number	Renishaw part number	Zeiss part number	DK (mm)	ML1/ML (mm)	DG/D (mm)	L (mm)	DS1/DS (mm)	EAL/B (mm)	Weight (g)
1	A-5003-0850				11	20			5.7
2	A-5555-0135	600341-8261-000			11	40			10.3
3	A-5555-0134	600341-8262-000			11	60			15.4
4	A-5555-0133	600341-8263-000			11	80			20.6
5	A-5555-0132	600341-8264-000			11	100			25.6
6	A-5555-0131	600341-8265-000			11	120			30.9
7	A-5555-0130	600341-8465-000			20	40			29
8	A-5555-0671	-			20	50			33.3
9	A-5555-0129	600341-8424-000			20	60			37.7
10	A-5555-0128	600341-8423-000			20	80			44.8
11	A-5555-0127	600341-8422-000			20	100			50.7
12	A-5555-0126	600341-8421-000			20	150			67.4
13	A-5555-0125	600341-8420-000			20	200			84.7

**Part and description  
(schematic not shown to scale)**

**Extension**  
M5 thread, stainless steel



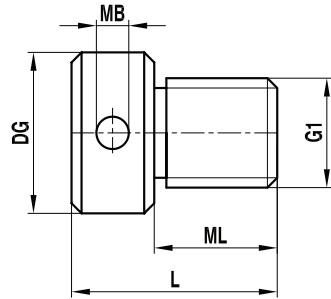
Item number	Renishaw part number	Zeiss part number	DK (mm)	ML1/ML (mm)	DG/D (mm)	L (mm)	DS1/DS (mm)	EAL/B (mm)	Weight (g)
1	A-5555-0142	600341-0250-000			11	10			6
2	A-5555-0141	600341-0251-000			11	15			9
3	A-5555-0140	600341-0252-000			11	20			13
4	A-5555-0139	600341-0254-000			11	40			28
5	A-5555-0138	600341-0256-000			11	60			42
6	A-5555-0137	600341-0258-000			11	80			58
7	A-5555-0136	600341-0260-000			11	100			73

# Renishaw M5 styli, adaptors and accessories for Zeiss analogue probe systems



**Part and description  
(schematic not shown to scale)**

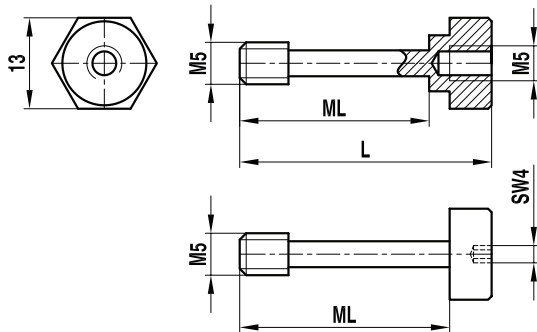
Thread measuring gauge  
M5 thread, stainless steel



Item number	Renishaw part number	Zeiss part number	DK (mm)	ML1/ML (mm)	DG/D (mm)	L (mm)	MB (mm)	G1 (mm)	Weight (g)
1	A-5555-0209	–		10	10	16	1.8	M4	4
2	A-5555-0210	–		10	10	16	1.8	M5	4
3	A-5555-0211	–		12	12	18	1.8	M6	7
4	A-5555-0212	–		12	15	20	3	M8	13
5	A-5555-0213	–		15	18	25	3	M10	25
6	A-5555-0214	–		15	20	25	3	M12	33

**Part and description  
(schematic not shown to scale)**

Screw for cube and spherical disc  
M5 thread, stainless steel



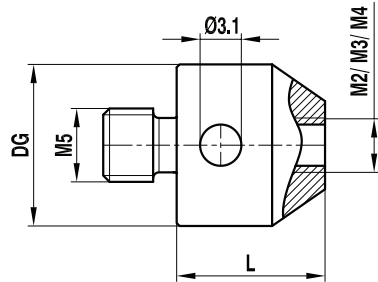
Item number	Renishaw part number	Zeiss part number	DK (mm)	ML1/ML (mm)	DG/D (mm)	L (mm)	DS1/DS (mm)	EAL/B (mm)	Weight (g)
1	A-5555-0223	600341-0212		9		17.5			7
2	A-5555-0222	600341-0211		21		30			9
3	A-5555-0221	600341-0210		26		35			9
4	A-5555-0225	–		21					3
5	A-5555-0224	–		26					4

# Renishaw M5 styli, adaptors and accessories for Zeiss analogue probe systems



**Part and description  
(schematic not shown to scale)**

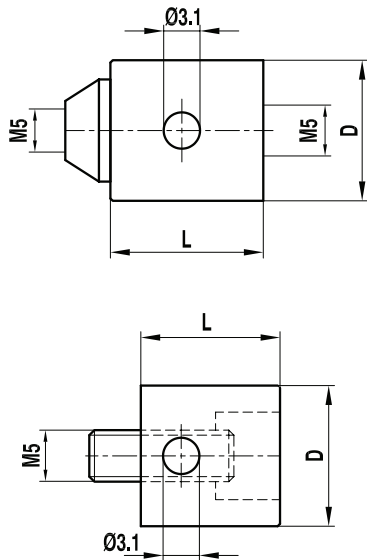
Adaptor  
M5 thread, stainless steel



Item number	Renishaw part number	Zeiss part number	DK (mm)	ML1/ML (mm)	DG/D (mm)	L (mm)	DS1/DS (mm)	From/to (mm)	Weight (g)
1	A-5555-0226	602030-0215-000			11	10	M5/M2		5.2
2	A-5555-0227	602030-0315-000			11	10	M5/M3		5.2
3	A-5555-0228	-			11	10	M5/M4		5.2

**Part and description  
(schematic not shown to scale)**

Adaptor with thread/conical shaft base  
M5 thread, stainless steel



Item number	Renishaw part number	Zeiss part number	DK (mm)	ML1/ML (mm)	DG/D (mm)	L (mm)	DS1/DS (mm)	EAL/B (mm)	Weight (g)
1	A-5555-0013	600331-0001-000			18	10			12
2	A-5555-0014	602030-0018-000			18	12			10

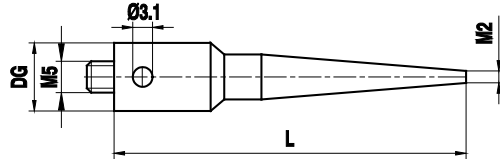


# Renishaw M5 styli, adaptors and accessories for Zeiss analogue probe systems



**Part and description  
(schematic not shown to scale)**

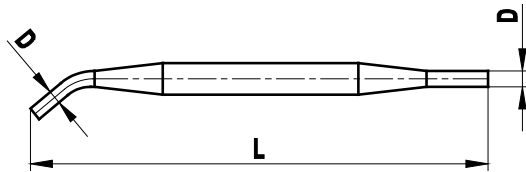
Holder for digitilisation styli  
M5 thread, stainless steel



Item number	Renishaw part number	Zeiss part number	DK (mm)	ML1/ML (mm)	DG/D (mm)	L (mm)	DS1/DS (mm)	Thread (mm)	Weight (gr)
1	A-5555-0231	602030-9113-000			15.81	119		M2	126
2	A-5555-0232	602030-9115-000			9.52	127		M2	87

**Part and description  
(schematic not shown to scale)**

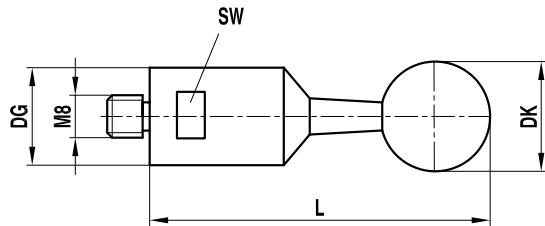
Pin type spanner 2.9 for M5 thread, stainless steel



Item number	Renishaw part number	Zeiss part number	DK (mm)	ML1/ML (mm)	DG/D (mm)	L (mm)	DS1/DS (mm)	Qty	Weight (gr)
1	A-5555-0240	000000-0015-323			2.9	70		1 off	
2	A-5555-0238	600341-8596-000			2.9	70		2 off	

**Part and description  
(schematic not shown to scale)**

Calibration sphere with stand  
M8 thread, stainless steel, ceramic ball including certificate

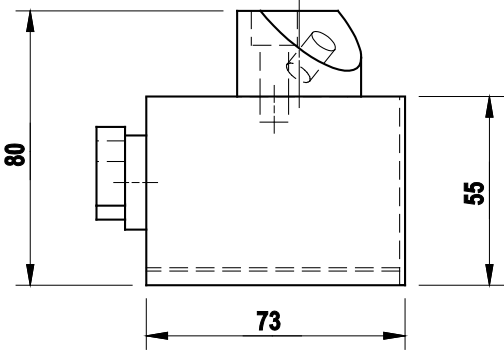
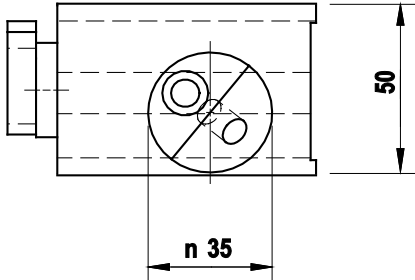


Item number	Renishaw part number	Zeiss part number	DK (mm)	ML1/ML (mm)	DG/D (mm)	L (mm)	DS1/DS (mm)	SW (mm)	Weight (g)
1	A-5555-3842	-	15		24	130		22	
2	A-5555-3843	-	20		24	135		22	
3	A-5555-3844	-	25		24	140		22	
4	A-1034-0124	-	30		24	145		22	

**Part and description  
 (schematic not shown to scale)**

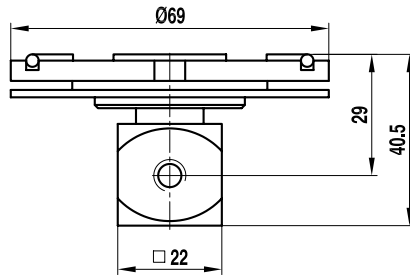
Magnet base for calibration sphere  
 M5 thread, for calibration below 45°

Item number	Renishaw part number	Zeiss part number	DK (mm)	ML1/ML (mm)	DG/D (mm)	L (mm)	DS1/DS (mm)	EAL/B (mm)	Weight (g)
1	A-5555-2443	-							



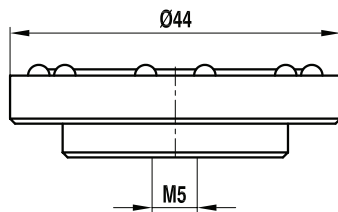
## Renishaw adaptor plates for Zeiss probe heads

Part and description (schematic not shown to scale)	Item number	Renishaw part number	Zeiss part number	DK (mm)	ML1/ML (mm)	DK (mm)	L (mm)	DS/D (mm)	Number of pieces	Weight (g)
Adaptor plate for measuring systems VAST/MT M5 thread, aluminium, with active ID chip and engraved 15° scale	1	A-5555-0255	600667-9601-000						1	153
	2	A-5555-0256	600667-9611-000						2	306
	3	*A-5555-0258	600667-8571-000						1	130



\* Adaptor plate instead of cube.

Part and description (schematic not shown to scale)	Item number	Renishaw part number	Zeiss part number	DK (mm)	ML1/ML (mm)	DG/D (mm)	L (mm)	DS1/DS (mm)	Number of pieces	Weight (g)
Adaptor plate for dynamic systems (ST) M5 thread, aluminium	1	A-5555-0322	–						1	72
	2	A-5555-0251	600660-8251-000						2	144



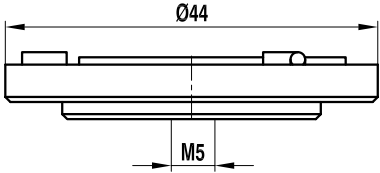
Renishaw adaptor plates for Zeiss probe heads



**Part and description  
(schematic not shown to scale)**

Adaptor plate for Prismo dynamic systems (ST)  
M5 thread, aluminium

Item number	Renishaw part number	Zeiss part number	DK (mm)	ML1/ML (mm)	DG/D (mm)	L (mm)	DS1/DS (mm)	Number of pieces	Weight (g)
1	A-5555-3900	-						1	72
2	A-5555-0253	620660-8251-000						2	144

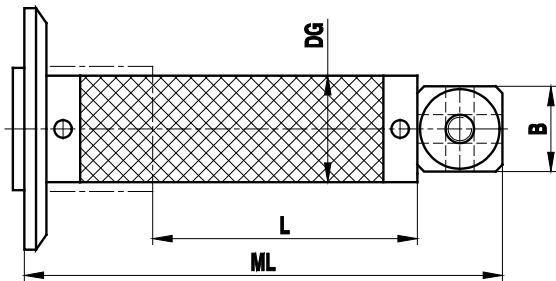
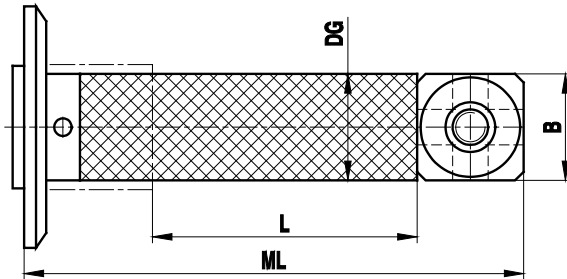


# Renishaw adaptor plates for Zeiss probe heads



**Part and description  
(schematic not shown to scale)**

Extension for adaptor plate  
M5 thread, thermostable carbon fibre, black,  
titanium cube and plate adaptor



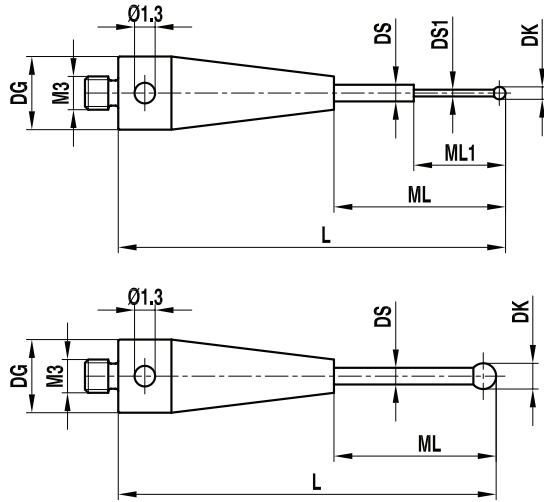
Item number	Renishaw part number	Zeiss part number	DK (mm)	ML1/ML (mm)	DG/D (mm)	L (mm)	DS1/DS (mm)	EAL/B (mm)	Weight (g)
1	A-5555-3845	–		66.5	11	25		15	60
2	A-5555-3846	–		81.5	11	40		15	62
3	A-5555-3847	–		91.5	11	50		15	64
4	A-5555-3848	–		101.5	11	60		15	66
5	A-5555-3849	–		121.5	11	80		15	68
6	A-5555-3850	–		141.5	11	100		15	70
7	A-5555-3851	–		161.5	11	120		15	72
8	A-5555-3740	–		191.5	11	150		15	77
9	A-5555-3852	–		241.5	11	200		15	84
10	A-5555-0699	626107-2025-130		66.5	20	25		15	60
11	A-5555-1985	626107-2040-130		81.5	20	40		15	62
12	A-5555-1986	626107-2050-130		91.5	20	50		15	64
13	A-5555-1987	626107-2060-130		101.5	20	60		15	66
14	A-5555-0700	626107-2080-130		121.5	20	80		15	68
15	A-5555-1988	626107-2100-130		141.5	20	100		15	70
16	A-5555-1989	626107-2120-130		161.5	20	120		15	72
17	A-5555-0701	626107-2150-130		191.5	20	150		15	77
18	A-5555-1990	626107-2200-130		241.5	20	200		15	84
19	A-5555-1979	626107-2025-110		71.5	20	25		20	74
20	A-5555-1980	626107-2040-110		86.5	20	40		20	76
21	A-5555-1855	626107-2050-110		96.5	20	50		20	78
22	A-5555-1981	626107-2060-110		106.5	20	60		20	80
23	A-5555-1982	626107-2080-110		126.5	20	80		20	82
24	A-5555-1983	626107-2100-110		146.5	20	100		20	84
25	A-5555-1938	626107-2120-110		166.5	20	120		20	86
26	A-5555-1937	626107-2150-110		196.5	20	150		20	91
27	A-5555-1984	626107-2200-110		246.5	20	200		20	98

# Renishaw M3 styli, adaptors and accessories for Zeiss analogue probe systems



**Part and description  
(schematic not shown to scale)**

**Carbide styli XXT**  
M3 thread, titanium base, carbide stem, ruby ball, peg mounted except for ball diameters 0.3 mm – 0.6 mm



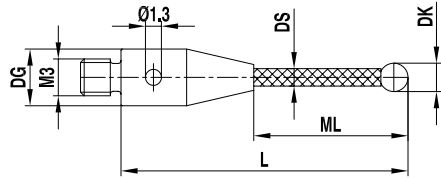
Item number	Renishaw part number	Zeiss part number	DK (mm)	ML1/ML (mm)	DG/D (mm)	L (mm)	DS1/DS (mm)	EAL/B (mm)	Weight (g)
1	A-5004-3176	626113-0030-013	0.3	2.3/4.0	5	13	0.2/1.0		0.62
2	A-5004-2185	626113-0030-020	0.3	2.3/11	5	20	0.2/1.0		0.69
3	A-5004-1702	626113-0050-013	0.5	2.3/4.0	5	13	0.3/1.0		0.61
4	A-5004-2186	626113-0050-020	0.5	2.3/11	5	20	0.3/1.0		0.69
5	A-5555-3853	626113-0060-014	0.6	4.6/5.0	5	14	0.4/1.0		0.61
6	A-5004-3179	626113-0060-020	0.6	4.6/11	5	20	0.4/1.0		0.68
7	A-5004-3273	626113-0080-014	0.8	5	5	14	0.6		0.62
8	A-5004-3274	626113-0080-020	0.8	4.8/11	5	20	0.6/1.0		0.69
9	A-5004-1883	626113-0080-034	0.8	4.1/25	5	34	0.6/1.0		0.8
10	A-5004-3187	626113-0100-014	1	5	5	14	0.8		0.63
11	A-5555-3854	626113-0101-020	1	5.1/11	5	20	0.6/1.0		0.7
12	A-5004-1863	626113-0100-020	1	5.0/11	5	20	0.8/1.0		0.69
13	A-5004-3519	626113-0103-020	1	11	5	20	0.8		0.7
14	A-5004-3427	626113-0100-030	1	5.0/21	5	30	0.8/1.0		0.8
15	A-5555-9341	626113-0100-040	1	5.0/31	5	40	0.8/1.0		1.5
16	A-5004-3272	626113-0150-014	1.5	5	5	14	1		0.65
17	A-5004-4653	626113-0150-020	1.5	11	5	20	1		0.72
18	A-5555-9339	626113-0151-030	1.5	21	5	30	1		0.84
19	A-5555-9340	626113-0150-030	1.5	22.5	5	30	1		0.9
20	A-5004-1779	626113-0151-040	1.5	31	5	40	1		1.6
21	A-5004-3188	626113-0200-014	2	5	5	14	1		0.66
22	A-5004-1861	626113-0200-020	2	11	5	20	1		0.72
23	A-5004-0656	626113-0200-030	2	21	5	30	1		0.83
24	A-5555-3855	626113-0201-040	2	31	5	40	1.5		1.7
25	A-5555-3856	626113-0250-020	2.5	11	5	20	1.5		1
26	A-5555-3857	626113-0250-030	2.5	21	5	30	1.5		1.5
27	A-5004-3428	626113-0250-040	2.5	31	5	40	1.5		2

# Renishaw M3 styli, adaptors and accessories for Zeiss analogue probe systems



**Part and description  
(schematic not shown to scale)**

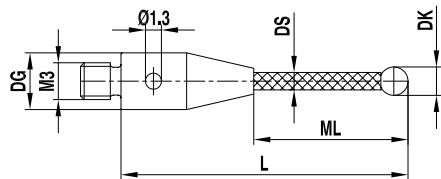
Reference styli XXT (red dot)  
M3 thread, titanium base, thermostable carbon fibre stem, ruby ball



Item number	Renishaw part number	Zeiss part number	DK (mm)	ML1/ML (mm)	DG/D (mm)	L (mm)	DS1/DS (mm)	EAL/B (mm)	Weight (g)
1	A-5555-2033	626103-0501-030	5	21	5	30	3.5		1.1
2	A-5555-3858	626103-0501-050	5	41	5	50	3.5		1.4

**Part and description  
(schematic not shown to scale)**

Carbon fibre styli XXT thermostable  
M3 thread, titanium base, thermostable carbon fibre stem, ruby ball, peg mounted



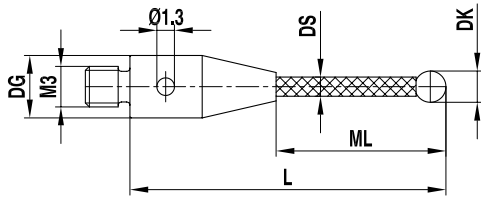
Item number	Renishaw part number	Zeiss part number	DK (mm)	ML1/ML (mm)	DG/D (mm)	L (mm)	DS1/DS (mm)	EAL/B (mm)	Weight (g)
1	A-5555-3859	626103-0300-025	3	16	5	25	2		0.65
2	A-5004-0802	626103-0300-033	3	24	5	33	2		0.7
3	A-5555-1251	626103-0300-040	3	31	5	40	2		0.8
4	A-5004-1884	626103-0300-042	3	33	5	42	2		0.8
5	A-5004-0803	626103-0300-050	3	41	5	50	2		0.8
6	A-5555-3860	626103-0300-058	3	49	5	58	2		1
7	A-5555-3861	626103-0300-059	3	50	5	59	2		1
8	A-5555-3862	626103-0300-075	3	66	5	75	2		1
9	A-5004-2786	626103-0401-050	4	41	5	50	2		1
10	A-5004-2108	626103-0500-030	5	21	5	30	3.5		1.1
11	A-5555-0863	626103-0500-040	5	31	5	40	3.5		1.2
12	A-5004-0806	626103-0500-050	5	41	5	50	3.5		1.4
13	A-5555-3864	626103-0500-060	5	51	5	60	3.5		1.5
14	A-5555-1114	626103-0501-075	5	66	5	75	3.5		1.8
15	A-5004-3429	626103-0600-050	6	40	5	50	3.5		1.5
16	A-5555-3865	626103-0610-070	6	61	5	70	3.5		1.8
17	A-5555-1115	626103-0600-100	6	91	5	100	3.5		2.4
18	A-5555-3866	626103-0800-030	8	30	5	30	5		1.86
19	A-5555-3867	626103-0830-050	8	50	5	50	5		2.1
20	A-5555-3868	626103-0830-070	8	70	5	70	5		2.6
21	A-5555-3869	626103-0830-100	8	100	5	100	5		2.7
22	A-5004-0808	626103-0800-125	8	125	5	125	5		2.9

# Renishaw M3 styli, adaptors and accessories for Zeiss analogue probe systems



**Part and description  
(schematic not shown to scale)**

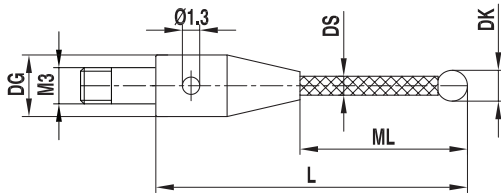
Carbon fibre styli XXT thermostable with silicon nitride ball  
M3 thread, titanium base, thermostable carbon fibre stem, silicon nitride ball, cup mounted



Item number	Renishaw part number	Zeiss part number	DK (mm)	ML1/ML (mm)	DG/D (mm)	L (mm)	DS1/DS (mm)	EAL/B (mm)	Weight (g)
1	A-5555-3870	626103-0301-033	3	24	5	33	2		0.7
2	A-5555-3871	626103-0301-050	3	41	5	50	2		0.8
3	A-5555-3872	626103-0502-050	5	41	5	50	3.5		1.4
4	A-5004-1858	626103-0500-075	5	66	5	75	3.5		1.8
5	A-5004-4635	626103-0801-070	8	70	5	70	5		2.6
6	A-5555-3874	626103-0801-125	8	125	5	125	5		2.9

**Part and description  
(schematic not shown to scale)**

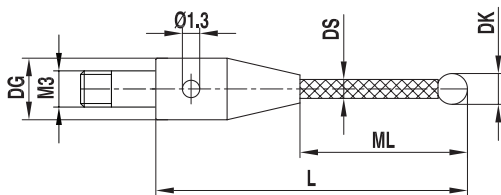
Carbon fibre clamping styli XXT thermostable  
M3 thread, titanium base, thermostable, carbon fibre stem, ruby ball, peg mounted



Item number	Renishaw part number	Zeiss part number	DK (mm)	ML1/ML (mm)	DG/D (mm)	L (mm)	DS1/DS (mm)	EAL/B (mm)	Weight (g)
1	A-5555-3875	626103-0301-020	3	11	5	20	2		0.7
2	A-5555-3876	626103-0301-030	3	21	5	30	2		0.75
3	A-5004-3282	626103-0301-040	3	31	5	40	2		0.8

**Part and description  
(schematic not shown to scale)**

Carbon fibre clamping styli XXT thermostable with silicon nitride ball  
M3 thread, titanium base, thermostable carbon fibre stem silicon nitride ball, cup mounted

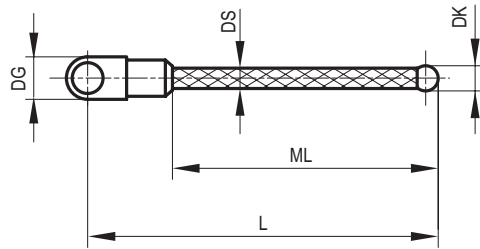


Item number	Renishaw part number	Zeiss part number	DK (mm)	ML1/ML (mm)	DG/D (mm)	L (mm)	DS1/DS (mm)	EAL/B (mm)	Weight (g)
1	A-5555-3877	626103-0311-020	3	11	5	20	2		0.7
2	A-5555-2445	626103-0311-030	3	21	5	30	2		0.75
3	A-5004-4546	626103-0311-040	3	31	5	40	2		0.8



**Part and description  
(schematic not shown to scale)**

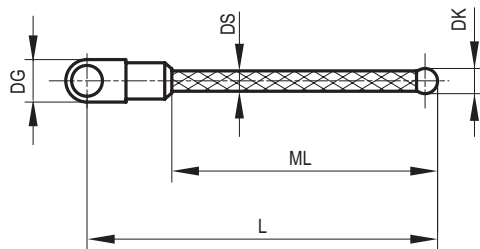
Carbon fibre styli for 1/4 star styli XXT thermostable M3 thread, titanium base, thermostable carbon fibre stem, ruby ball, peg mounted



Item number	Renishaw part number	Zeiss part number	DK (mm)	ML1/ML (mm)	DG/D (mm)	L (mm)	DS1/DS (mm)	EAL/B (mm)	Weight (g)
1	A-5555-1273	626103-0302-020	3	11	5	20	2		0.8
2	A-5555-1274	626103-0302-030	3	21	5	30	2		0.9
3	A-5555-1275	626103-0302-040	3	31	5	40	2		1

**Part and description  
(schematic not shown to scale)**

Carbon fibre styli for 1/4 star styli carbon fibre XXT thermostable with silicon nitride ball M3 thread, titanium base, thermostable carbon fibre stem, silicon nitride ball, cup mounted



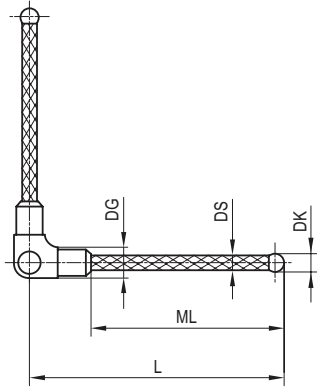
Item number	Renishaw part number	Zeiss part number	DK (mm)	ML1/ML (mm)	DG/D (mm)	L (mm)	DS1/DS (mm)	EAL/B (mm)	Weight (g)
1	A-5555-3880	626103-0312-020	3	11	5	20	2		0.8
2	A-5555-3881	626103-0312-030	3	21	5	30	2		0.9
3	A-5555-3901	626103-0312-040	3	31	5	40	2		1

# Renishaw M3 styli, adaptors and accessories for Zeiss analogue probe systems



**Part and description  
(schematic not shown to scale)**

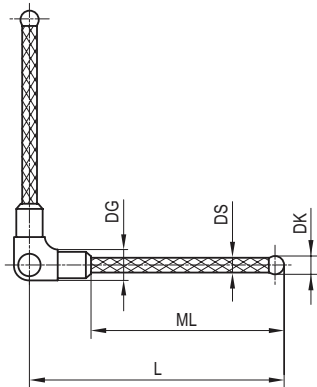
Carbon fibre styli for 1/2 star styli XXT 90° thermostable M3 thread, titanium base, thermostable carbon fibre stem, ruby ball, peg mounted



Item number	Renishaw part number	Zeiss part number	DK (mm)	ML1/ML (mm)	DG/D (mm)	L (mm)	DS1/DS (mm)	EAL/B (mm)	Weight (g)
1	A-5555-3882	626103-0303-020	3	11	5	20	2		1.4
2	A-5555-3883	626103-0303-030	3	21	5	30	2		1.5
3	A-5004-3284	626103-0303-040	3	31	5	40	2		1.6

**Part and description  
(schematic not shown to scale)**

Carbon fibre styli for 1/2 star styli XXT 90° thermostable with silicon nitride ball M3 thread, titanium base, thermostable carbon fibre stem, silicon nitride ball, cup mounted



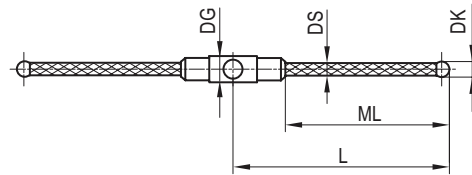
Item number	Renishaw part number	Zeiss part number	DK (mm)	ML1/ML (mm)	DG/D (mm)	L (mm)	DS1/DS (mm)	EAL/B (mm)	Weight (g)
1	A-5555-3884	626103-0313-020	3	11	5	20	2		1.4
2	A-5555-3885	626103-0313-030	3	21	5	30	2		1.5
3	A-5555-3886	626103-0313-040	3	31	5	40	2		1.6

# Renishaw M3 styli, adaptors and accessories for Zeiss analogue probe systems



**Part and description  
(schematic not shown to scale)**

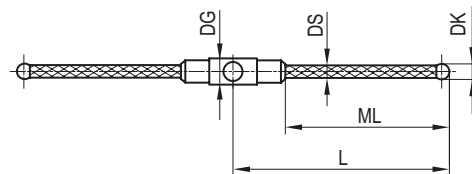
Carbon fibre styli for 1/2 star styli XXT 180° thermostable M3 thread, titanium base, thermostable carbon fibre stem, ruby ball, peg mounted



Item number	Renishaw part number	Zeiss part number	DK (mm)	ML1/ML (mm)	DG/D (mm)	L (mm)	DS1/DS (mm)	EAL/B (mm)	Weight (g)
1	A-5555-3887	626103-0304-020	3	11	5	20	2		1.4
2	A-5555-3888	626103-0304-030	3	21	5	30	2		1.5
3	A-5004-0654	626103-0304-040	3	31	5	40	2		1.6

**Part and description  
(schematic not shown to scale)**

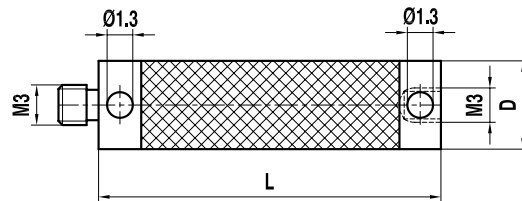
Carbon fibre styli for 1/2 star styli XXT 180° thermostable with silicon nitride ball M3 thread, titanium base, thermostable carbon fibre stem, silicon nitride ball, cup mounted



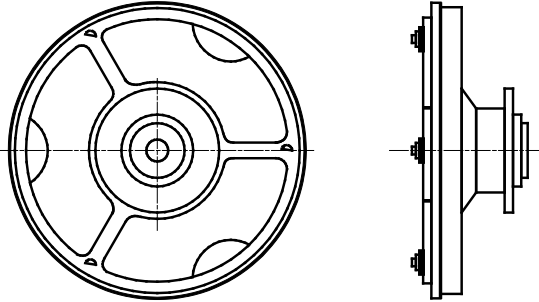
Item number	Renishaw part number	Zeiss part number	DK (mm)	ML1/ML (mm)	DG/D (mm)	L (mm)	DS1/DS (mm)	EAL/B (mm)	Weight (g)
1	A-5555-3889	626103-0314-020	3	11	5	20	2		1.4
2	A-5555-3890	626103-0314-030	3	21	5	30	2		1.5
3	A-5555-3891	626103-0314-040	3	31	5	40	2		1.6

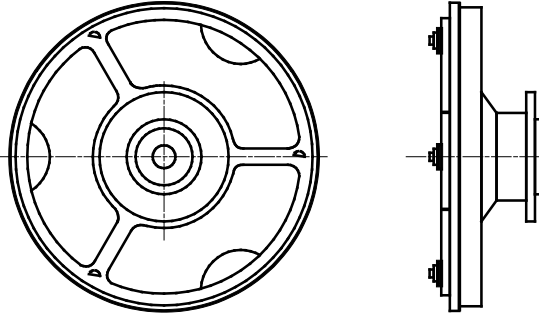
**Part and description  
(schematic not shown to scale)**

Carbon fibre extension XXT M3 thread, thermostable black carbon fibre



Item number	Renishaw part number	Zeiss part number	DK (mm)	ML1/ML (mm)	DG/D (mm)	L (mm)	DS1/DS (mm)	EAL/B (mm)	Weight (g)
1	A-5555-3892	626103-5020-000			5	20			1.2
2	A-5555-1947	626103-5025-000			5	25			1.25
3	A-5004-3430	626103-5030-000			5	30			1.3
4	A-5555-3893	626103-5040-000			5	40			1.4
5	A-5004-0002	626103-5050-000			5	50			1.5
6	A-5555-3894	626103-5060-000			5	60			1.7
7	A-5555-1948	626103-5075-000			5	75			1.7
8	A-5004-2001	626103-5080-000			5	80			1.8
9	A-5004-1859	626103-5100-000			5	100			2
10	A-5555-3895	626103-5130-000			5	130			2.5
11	A-5555-1276	626103-5150-000			5	150			2.7

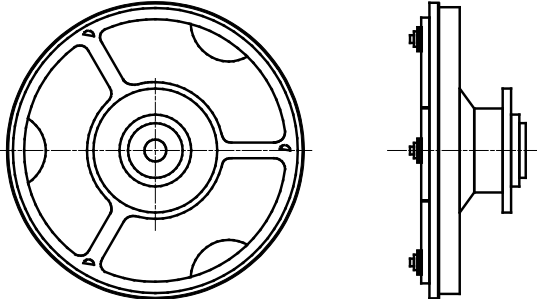
Part and description (schematic not shown to scale)	Item number	Renishaw part number	Zeiss part number	DK (mm)	ML1/ML (mm)	DK (mm)	L (mm)	DS/D (mm)	Number of pieces	Weight (g)
<p>Adaptor plate VAST XXT TL1 M3 thread, aluminium.</p> 	1	A-5555-1235	620161-8055-000						1	

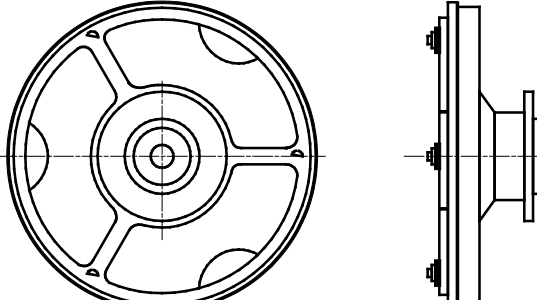
Part and description (schematic not shown to scale)	Item number	Renishaw part number	Zeiss part number	DK (mm)	ML1/ML (mm)	DK (mm)	L (mm)	DS/D (mm)	Number of pieces	Weight (g)
<p>Reference adaptor plate VAST XXT TL1 M3 thread, aluminium.</p> 	1	A-5555-1236	620161-8058-000						1	

# Renishaw M3 styli, adaptors and accessories for Zeiss analogue probe systems

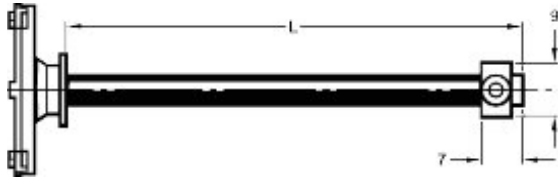


Part and description (schematic not shown to scale)	Item number	Renishaw part number	Zeiss part number	DK (mm)	ML1/ML (mm)	DK (mm)	L (mm)	DS/D (mm)	Number of pieces	Weight (g)
<p>Adaptor plate VAST XXT TL1 with star adaptor M3 thread, aluminium.</p>	1	A-5555-1241	626103-8031-055				55		1	6.3
<p>Adaptor plate for XXT TL2 M3 thread, aluminium.</p>	1	A-5555-1237	620161-8065-000				75		1	5.4
<p>Reference adaptor plate for XXT TL2 M3 thread, aluminium.</p>	1	A-5555-1238	620161-8068-000				75		1	5.4

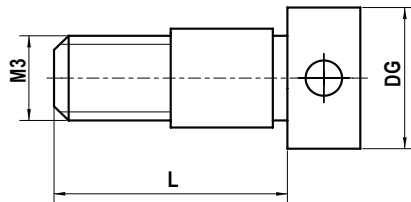
Part and description (schematic not shown to scale)	Item number	Renishaw part number	Zeiss part number	DK (mm)	ML1/ML (mm)	DK (mm)	L (mm)	DS/D (mm)	Number of pieces	Weight (g)
<p>Adaptor plate VAST XXT TL3 M3 thread, aluminium.</p> 	1	A-5555-1239	620161-8075-000						1	

Part and description (schematic not shown to scale)	Item number	Renishaw part number	Zeiss part number	DK (mm)	ML1/ML (mm)	DK (mm)	L (mm)	DS/D (mm)	Number of pieces	Weight (g)
<p>Reference adaptor plate VAST XXT TL3 M3 thread, aluminium.</p> 	1	A-5555-1240	620161-8078-000						1	

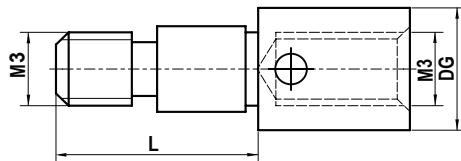
Part and description (schematic not shown to scale)	Item number	Renishaw part number	Zeiss part number	DK (mm)	ML1/ML (mm)	DK (mm)	L (mm)	DS/D (mm)	Number of pieces	Weight (g)
<b>Adaptor plate VAST XXT TL3 star</b> M3 thread, aluminium	1	A-5555-1242	626103-8033-055				55		1	6.3



Part and description (schematic not shown to scale)	Item number	Renishaw part number	Zeiss part number	DK (mm)	ML1/ML (mm)	DG/D (mm)	L (mm)	DS1/DS (mm)	EAL/B (mm)	Weight (g)
<b>Clamping screw XXT</b> M3 thread, titanium	1	A-5004-1856	626103-6110-004			5	8			0.5



Part and description (schematic not shown to scale)	Item number	Renishaw part number	Zeiss part number	DK (mm)	ML1/ML (mm)	DG/D (mm)	L (mm)	DS1/DS (mm)	EAL/B (mm)	Weight (g)
<b>Clamping screw XXT with internal M3 thread</b> M3, titanium	1	A-5004-1857	626103-6110-005			5	8			0.7

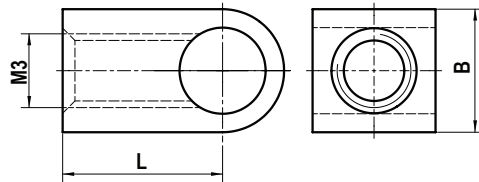


# Renishaw M3 styli, adaptors and accessories for Zeiss analogue probe systems



**Part and description  
(schematic not shown to scale)**

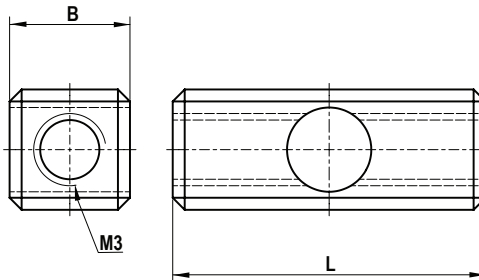
Cube XXT 90°, 1-way  
M3 thread, titanium



Item number	Renishaw part number	Zeiss part number	DK (mm)	ML1/ML (mm)	DG/D (mm)	L (mm)	DS1/DS (mm)	EAL/B (mm)	Weight (g)
1	A-5004-3437	626103-6110-001				6.5		5	0.64

**Part and description  
(schematic not shown to scale)**

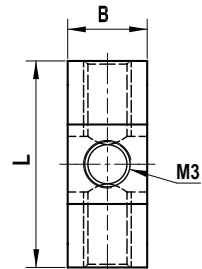
Cube XXT 180°, 2-way  
M3 thread, titanium



Item number	Renishaw part number	Zeiss part number	DK (mm)	ML1/ML (mm)	DG/D (mm)	L (mm)	DS1/DS (mm)	EAL/B (mm)	Weight (g)
1	A-5555-3896	626103-6110-002				13		5	1.05

**Part and description  
(schematic not shown to scale)**

Cube XXT star  
M3 thread, titanium

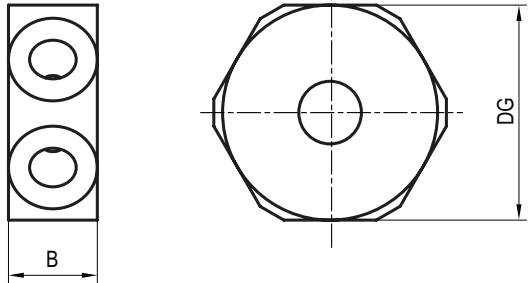


Item number	Renishaw part number	Zeiss part number	DK (mm)	ML1/ML (mm)	DG/D (mm)	L (mm)	DS1/DS (mm)	EAL/B (mm)	Weight (g)
1	A-5004-3185	626103-6110-003				13		5	1.8



**Part and description  
(schematic not shown to scale)**

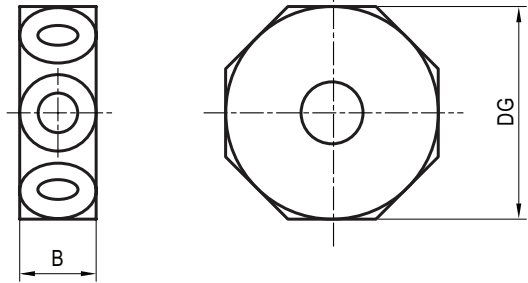
Cube XXT, 6-star  
M3 thread, titanium



Item number	Renishaw part number	Zeiss part number	DK (mm)	ML1/ML (mm)	DG/D (mm)	L (mm)	DS1/DS (mm)	EAL/B (mm)	Weight (g)
1	A-5555-3898	626103-6110-006			12			5	1.79

**Part and description  
(schematic not shown to scale)**

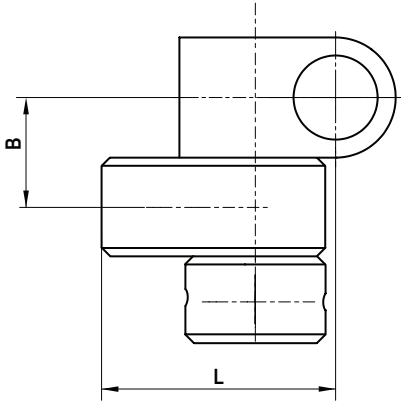
Cube XXT, 8-star  
M3 thread, titanium



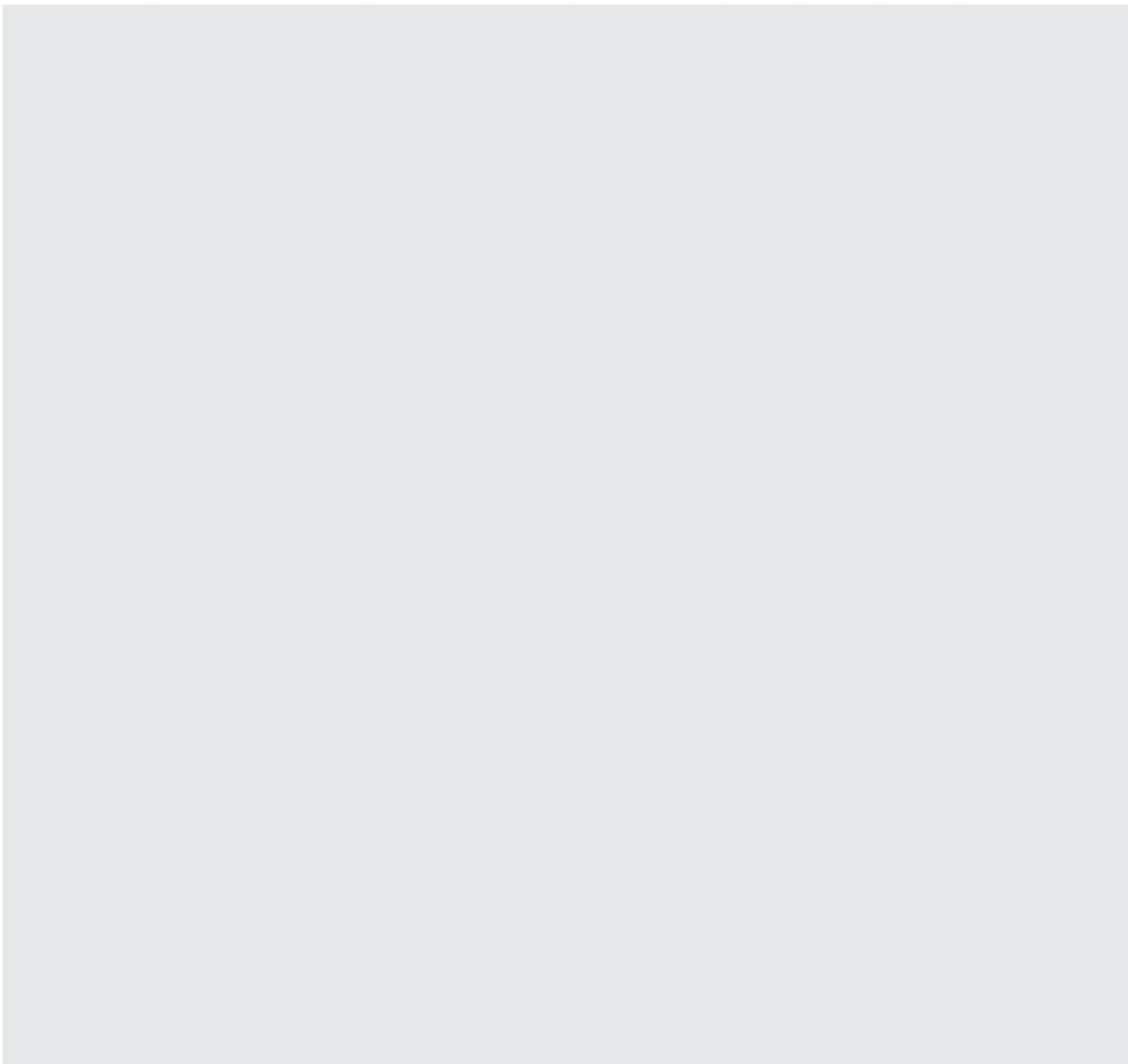
Item number	Renishaw part number	Zeiss part number	DK (mm)	ML1/ML (mm)	DG/D (mm)	L (mm)	DS1/DS (mm)	EAL/B (mm)	Weight (g)
1	A-5555-3899	626103-6110-007			14			5	2.31

**Part and description  
 (schematic not shown to scale)**

Knuckle XXT  
 M3 thread, titanium



Item number	Renishaw part number	Zeiss part number	DK (mm)	ML1/ML (mm)	DG/D (mm)	L (mm)	DS1/DS (mm)	EAL/B (mm)	Weight (g)
1	A-5004-3285	626103-6180-001				10		5	1.65

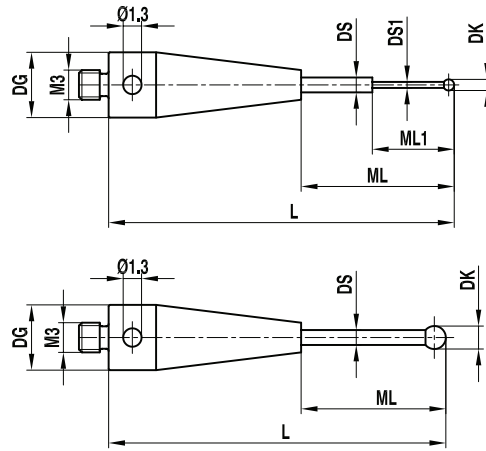


# Renishaw M3 styli, adaptors and accessories for Zeiss analogue probe systems



**Part and description  
(schematic not shown to scale)**

**Carbide styli**  
**M3 thread, stainless steel base, tungsten carbide stem,**  
**ruby ball, peg mounted**



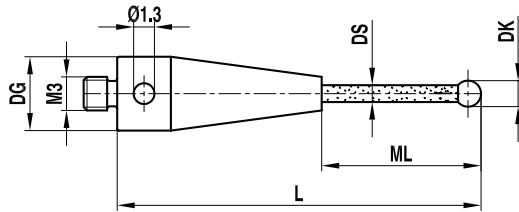
Item number	Renishaw part number	Zeiss part number	DK (mm)	ML1/ML (mm)	DG/D (mm)	L (mm)	DS1/DS (mm)	EAL/B (mm)	Weight (g)
1	A-5555-2446	–	0.2	2.3/9.0	4	22	0.18/1.0		1
2	A-5555-2447	–	0.25	2.3/9.0	4	22	0.18/1.0		1
3	A-5555-0273	602030-8121-000	0.3	2.3/9.0	4	22	0.2/1.0		1
4	A-5555-0267	602030-8115-000	0.5	2.5/11.25	4	21.25	0.3/1.0		1
5	A-5555-0268	602030-8116-000	0.6	4.6/9.0	4	22	0.4/1.0		1
6	A-5555-0269	602030-8117-000	0.8	4.8/9.0	4	22	0.6/1.0		1
7	A-5555-0272	602030-8120-000	1	5.0/5.5	4	10.5	0.8/1.0		1
8	A-5555-0270	602030-8118-000	1	5.0/9.0	4	22	0.8/1.0		1
9	A-5555-0271	602030-8119-000	1.5	9	4	22	1		1
10	A-5555-0274	602030-8023-000	2	15	4	21	1		1
11	A-5555-0261	602030-8104-000	2	14	4	22	1		1
12	A-5555-2448	–	2	34	4	40	1.5		1
13	A-5555-0277	602030-8106-000	3	13	4	21	2		1
14	A-5555-0276	602030-8021-000	3	15.5	4	21.5	1.5		1
15	A-5555-0262	602030-8113-000	3	21.5	5.5	40	2		4
16	A-5004-4513	–	3	31.5	5.5	50	2		4.5
17	A-5555-2449	–	4	22	4	30	2		2
18	A-5004-2785	–	4	32	4	40	2		2
19	A-5004-1008	–	4	42	4	50	2		2.9
20	A-5555-2450	–	5	22	4	30	2		2.1
21	A-5555-2451	–	5	32	4	40	2		2
22	A-5555-2452	–	5	42	4	50	2		3
23	A-5555-2453	–	5	52	4	60	2		3.5
24	A-5555-2454	–	6	22	4	30	2		2.3
25	A-5004-6728	–	6	32	4	40	2		2.7
26	A-5555-1118	–	6	42	4	50	2		3.2

# Renishaw M3 styli, adaptors and accessories for Zeiss analogue probe systems



**Part and description  
(schematic not shown to scale)**

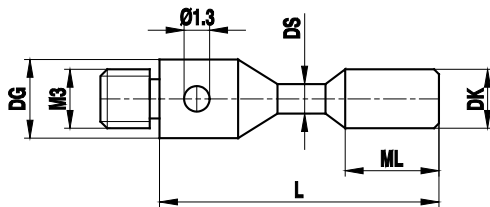
**Ceramic styli**  
M3 thread, stainless steel base, ceramic stem,  
ruby ball, peg mounted



Item number	Renishaw part number	Zeiss part number	DK (mm)	ML1/ML (mm)	DG/D (mm)	L (mm)	DS1/DS (mm)	EAL/B (mm)	Weight (g)
1	A-5555-0264	602030-8102-000	4	26	4	32	2		1
2	A-5555-0266	602030-8101-000	5	24.5	4	32.5	2		1
3	A-5555-0275	602030-8020-000	6	9	4	13	2		1
4	A-5004-4757	–	6	30.5	4	43.5	2		1.2
5	A-5004-2741	–	6	50.5	4	63.5	2		1.5
6	A-5555-2455	–	8	18.5	4	31.5	2		1.3

**Part and description  
(schematic not shown to scale)**

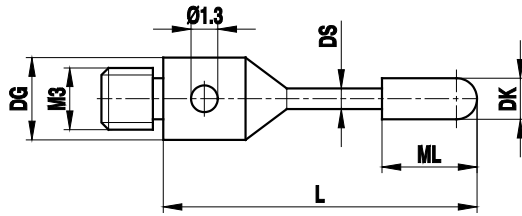
**Cylinder styli**  
M3 thread, stainless steel base, tungsten carbide stem,  
carbide cylinder



Item number	Renishaw part number	Zeiss part number	DK (mm)	ML1/ML (mm)	DG/D (mm)	L (mm)	DS1/DS (mm)	EAL/B (mm)	Weight (g)
1	A-5004-0254	602030-8097-000	1.5	1.5	4	11	1		0.4
2	A-5004-0255	602030-8099-000	3	4	4	13	1.5		0.7

**Part and description  
(schematic not shown to scale)**

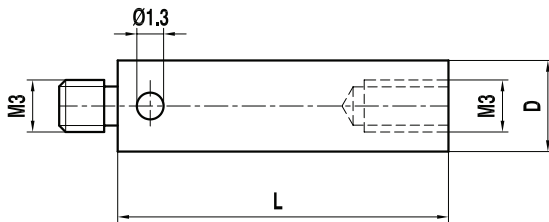
Cylinder styli  
M3 thread, stainless steel base, tungsten carbide stem,  
ruby cylinder



Item number	Renishaw part number	Zeiss part number	DK (mm)	ML1/ML (mm)	DG/D (mm)	L (mm)	DS1/DS (mm)	EAL/B (mm)	Weight (g)
1	A-5004-0256	602030-8107-000	2	7	4	21	1		0.7

**Part and description  
(schematic not shown to scale)**

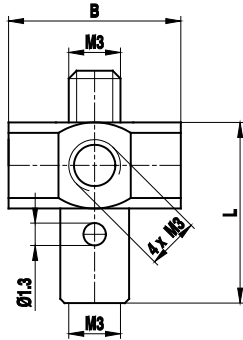
Extension  
M3 thread, stainless steel



Item number	Renishaw part number	Zeiss part number	DK (mm)	ML1/ML (mm)	DG/D (mm)	L (mm)	DS1/DS (mm)	EAL/B (mm)	Weight (g)
1	A-5004-7609	602030-8301-000			4	10			0.7
2	A-5004-7583	602030-8302-000			4	20			1.6
3	A-5555-0286	602030-8303-000			4	30			2.6
4	A-5555-0287	602030-8304-000			4	40			3.7
5	A-5555-0288	602030-8305-000			4	50			4.7

**Part and description  
(schematic not shown to scale)**

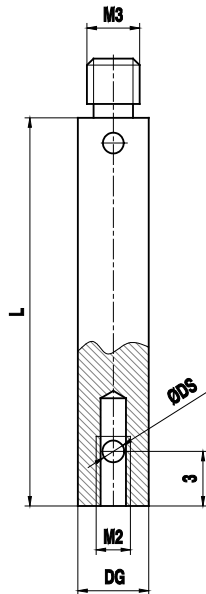
5-way styli holder, rotary  
M3 thread, stainless steel



Item number	Renishaw part number	Zeiss part number	DK (mm)	ML1/ML (mm)	DG/D (mm)	L (mm)	DS1/DS (mm)	EAL/B (mm)	Weight (g)
1	A-5555-0303	602030-8382-000				11.5		12	4.2

**Part and description  
(schematic not shown to scale)**

Holder for styli 90°  
M3 thread, stainless steel



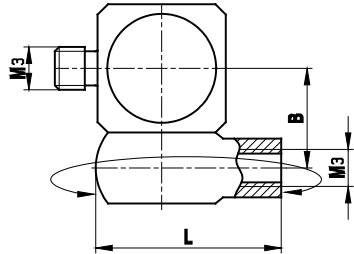
Item number	Renishaw part number	Zeiss part number	DK (mm)	ML1/ML (mm)	DG/D (mm)	L (mm)	DS1/DS (mm)	EAL/B (mm)	Weight (g)
1	A-5004-4561	–			4	30	1		2.9
2	A-5555-2456	–			4	30	1.5		2.9

# Renishaw M3 styli, adaptors and accessories for Zeiss analogue probe systems



**Part and description  
(schematic not shown to scale)**

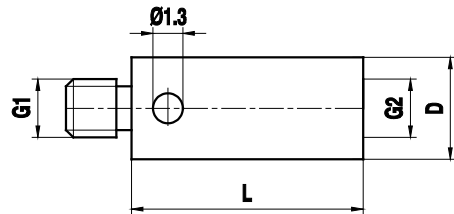
Rotary knuckle  
M3 thread, stainless steel



Item number	Renishaw part number	Zeiss part number	DK (mm)	ML1/ML (mm)	DG/D (mm)	L (mm)	DS1/DS (mm)	EAL/B (mm)	Weight (g)
1	A-5000-7616	602030-9102-000				12		6	3.6

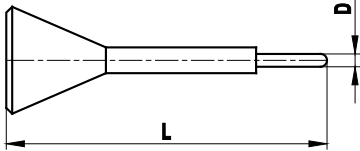
**Part and description  
(schematic not shown to scale)**


Adaptor  
M3/M2 thread, stainless steel




Item number	Renishaw part number	Zeiss part number	DK (mm)	ML1/ML (mm)	DG/D (mm)	L (mm)	DS1/DS (mm)	Thread from/to	Weight (g)
1	A-5004-7592	602030-8341-000			4	5		M3/M2	0.5
2	A-5555-0306	602030-8345-000			4	5		M2/M3	0.5
3	A-5555-2457	000000-1049-178			4	7		M2/M3	0.5

Renishaw tools and accessories for assembly of M2, M3 and M5 styli to Zeiss measuring probe heads

Part and description	Item number	Renishaw part number	Zeiss part number	DK (mm)	ML1/ML (mm)	DG/D (mm)	L (mm)	DS1/DS (mm)	EAL/B (mm)	Weight (g)
<b>Stylus tool</b> M2 and M3 styli, stainless steel 	1	A-5555-0233	602030-0001-000			1.2	23			1

Part and description	Item number	Renishaw part number	Zeiss part number	DK (mm)	ML1/ML (mm)	DG/D (mm)	L (mm)	DS1/DS (mm)	EAL/B (mm)	Weight (g)
<b>Stylus assembly tool</b> M3 styli, stainless steel 	1	A-5555-0307	000000-1018-201							

Part and description (schematic not shown to scale)	Item number	Renishaw part number	Zeiss part number	DK (mm)	ML1/ML (mm)	DG/D (mm)	L (mm)	DS1/DS (mm)	EAL/B (mm)	Weight (g)
<b>Allen keys</b> Steel 	1	A-5555-0235	602030-0042-000						0.9	
	2	A-5555-0234	602030-0002-000						1.5	
	3	A-5555-0328	000000-0015-245						2	
	4	A-5004-0236	602030-0021-000						2.5	
	5	A-5555-2458	000000-0015-247						3	
	6	A-5555-2459	000000-0015-248						4	
	7	A-5555-2460	–						5	
	8	A-5555-2461	–						10	

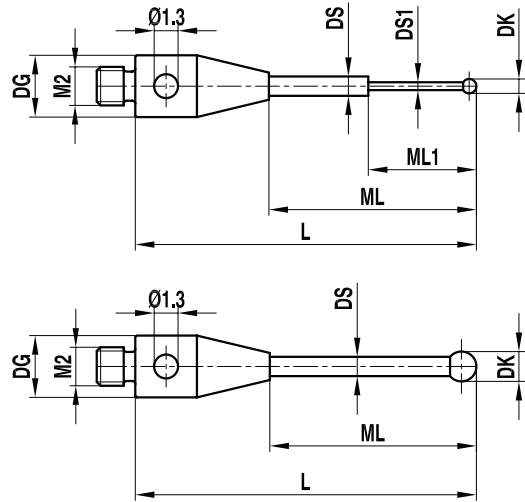


# Renishaw M2 styli, adaptors and accessories for Zeiss analogue probe systems



**Part and description**  
(schematic not shown to scale)

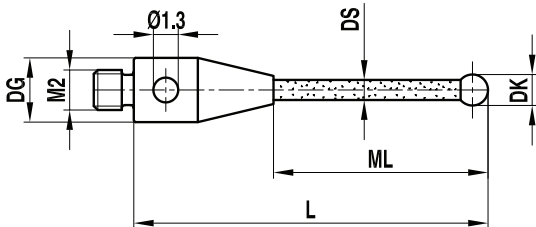
**Carbide styli**  
M2 thread, stainless steel base, tungsten carbide stem, ruby ball, peg mounted except for ball diameters 0.2 mm – 0.6 mm



Item number	Renishaw part number	Zeiss part number	DK (mm)	ML1/ML (mm)	DG/D (mm)	L (mm)	DS1/DS (mm)	EAL/B (mm)	Weight (g)
1	A-5004-5753	–	0.2	2.3/12.5	3	17	0.18/1.0		0.4
2	A-5555-2462	–	0.25	2.3/12.5	3	17	0.18/1.0		0.4
3	A-5555-9159	–	0.3	2.3/13.5	3	18	0.2/1.0		0.4
4	A-5555-1101	–	0.5	2.5/13.5	3	18	0.3/1.0		0.4
5	A-5555-9161	–	0.6	4.6/13.8	3	18.3	0.4/1.0		0.4
6	A-5555-9162	–	0.8	4.8/13.8	3	18.3	0.6/1.0		0.4
7	A-5003-0308	602030-8006-000	1	6.5	3	10.5	0.8		0.3
8	A-5555-0309	–	1	11.5	3	15.5	0.8		0.3
9	A-5555-2463	–	1	5.0/14.0	3	18.5	0.8/1.0		0.4
10	A-5555-0282	602030-8001-000	2	5	3	11	1		1
11	A-5555-0310	602030-8008-000	2	7	3	11	1		1
12	A-5555-0311	602030-8009-000	2	12	3	16	1		1
13	A-5003-3822	602030-8005-000	2	15	3	21	1		1
14	A-5555-2465	–	2.5	6	3	12	1.5		1
15	A-5555-2466	–	3	6	3	12	2		1
16	A-5003-0938	602030-8003-000	3	15.5	3	21.5	1.5		1
17	A-5555-0312	602030-8015-000	4	6	3	12	2		1
18	A-5555-0313	602030-8016-000	4	16	3	22	2		1
19	A-5555-0283	602030-8034-000	5	16.5	3	22.5	2		1

**Part and description**  
(schematic not shown to scale)

**Ceramic styli**  
M2 thread, stainless steel base, ceramic stem, ruby ball, peg mounted



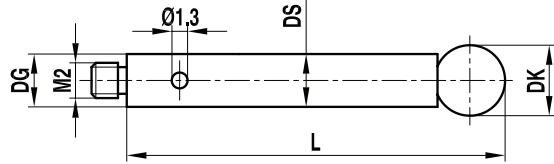
Item number	Renishaw part number	Zeiss part number	DK (mm)	ML1/ML (mm)	DG/D (mm)	L (mm)	DS1/DS (mm)	EAL/B (mm)	Weight (g)
1	A-5555-2467	–	4	12	3	16	2		0.8
2	A-5555-2468	–	4	30	3	36	2		1
3	A-5555-2469	–	5	10	3	14	2		0.8
4	A-5555-0279	–	5	16.5	3	22.5	2		1
5	A-5555-2470	–	5	32	3	38	2		1
6	A-5555-0278	602030-8002-000	6	9	3	13	2		1

# Renishaw M2 styli, adaptors and accessories for Zeiss analogue probe systems



**Part and description  
(schematic not shown to scale)**

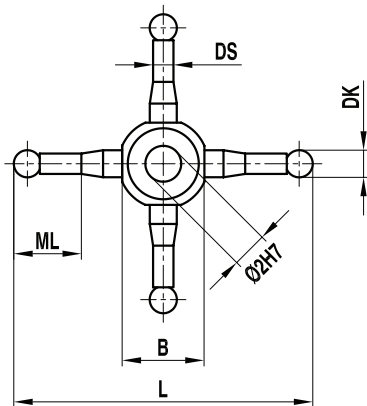
**Stainless steel styli**  
M2 thread, stainless steel base, stainless steel stem, ruby ball, peg mounted



Item number	Renishaw part number	Zeiss part number	DK (mm)	ML1/ML (mm)	DG/D (mm)	L (mm)	DS1/DS (mm)	EAL/B (mm)	Weight (g)
1	A-5555-2471	–	4	32	3	32	3		1.7
2	A-5555-2472	–	4	42	3	42	3		2.4
3	A-5555-2473	–	4	52	3	52	3		2.9
4	A-5555-2574	–	5	22	3	22	3		1.3
5	A-5555-2475	–	5	32	3	32	3		1.9
6	A-5555-2476	–	5	42.5	3	42.5	3		2.5
7	A-5555-2477	–	5	52.5	3	52.5	3		3.1
8	A-5555-0314	–	6	13	3	13	3		0.9
9	A-5555-0315	–	6	28	3	28	3		1.8
10	A-5555-0316	–	8	13	3	13	3		2

**Part and description  
(schematic not shown to scale)**

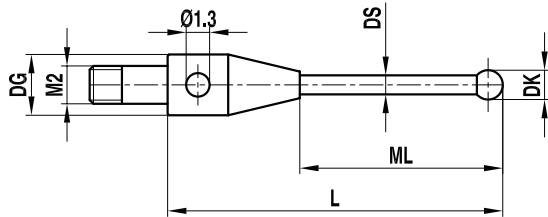
**Star styli.**  
M2 thread, stainless steel base, stainless steel stems, ruby balls, peg mounted



Item number	Renishaw part number	Zeiss part number	DK (mm)	ML1/ML (mm)	DG/D (mm)	L (mm)	DS1/DS (mm)	EAL/B (mm)	Weight (g)
1	A-5555-0295	602030-8010-000	2	4.5		22	1.4	5.5	1
2	A-5555-0294	602030-8011-000	2	9.5		32	1.4	5.5	1

**Part and description  
(schematic not shown to scale)**

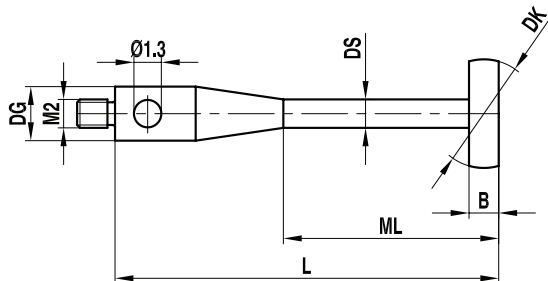
**Styli for star configuration**  
M2 thread, stainless steel base, stainless steel stem, ruby ball, peg mounted



Item number	Renishaw part number	Zeiss part number	DK (mm)	ML1/ML (mm)	DG/D (mm)	L (mm)	DS1/DS (mm)	EAL/B (mm)	Weight (g)
1	A-5555-0296	602030-8012-000	2	13.5	3	19.5	1.5		1

**Part and description  
(schematic not shown to scale)**

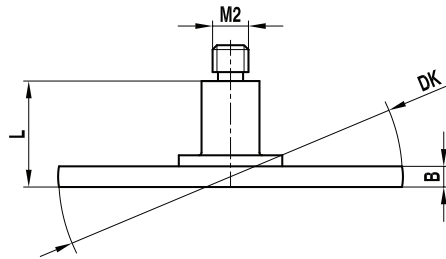
**Spherical disc styli**  
M2 thread, stainless steel base, tungsten carbide stem, ceramic disc



Item number	Renishaw part number	Zeiss part number	DK (mm)	ML1/ML (mm)	DG/D (mm)	L (mm)	DS1/DS (mm)	EAL/B (mm)	Weight (g)
1	A-5555-0298	602030-8202-000	4	19	3	32	1	1	1
2	A-5555-0297	602030-8201-000	8	19	3	32	1.5	1.5	1

**Part and description  
(schematic not shown to scale)**

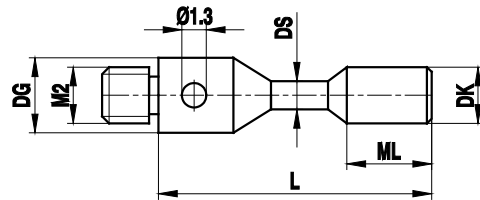
Spherical disc styli  
M2 thread, stainless steel base, stainless steel stem,  
ceramic disc



Item number	Renishaw part number	Zeiss part number	DK (mm)	ML1/ML (mm)	DG/D (mm)	L (mm)	DS1/DS (mm)	EAL/B (mm)	Weight (g)
1	A-5555-0299	602030-8203-000	14			5.5		2	1
2	A-5555-0300	602030-8204-000	20			5.5		2.5	3

**Part and description  
(schematic not shown to scale)**

Cylinder styli  
M2 thread, stainless steel base, tungsten carbide stem,  
tungsten carbide cylinder



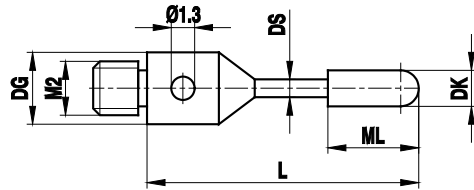
Item number	Renishaw part number	Zeiss part number	DK (mm)	ML1/ML (mm)	DG/D (mm)	L (mm)	DS1/DS (mm)	EAL/B (mm)	Weight (g)
1	A-5004-0936	602030-8096-000	1.5	1.5	3	11	1		0.3
2	A-5004-0937	602030-8098-000	3	4	3	13	1.5		0.6

# Renishaw M2 styli, adaptors and accessories for Zeiss analogue probe systems



**Part and description  
(schematic not shown to scale)**

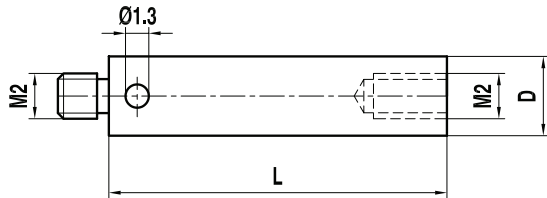
**Cylinder styli**  
M2 thread, stainless steel base, tungsten carbide stem, ruby cylinder.



Item number	Renishaw part number	Zeiss part number	DK (mm)	ML1/ML (mm)	DG/D (mm)	L (mm)	DS1/DS (mm)	EAL/B (mm)	Weight (g)
1	A-5000-7812	602030-8100-000	2	7	3	21	1		0.6

**Part and description  
(schematic not shown to scale)**

**Extension**  
M2 thread, stainless steel



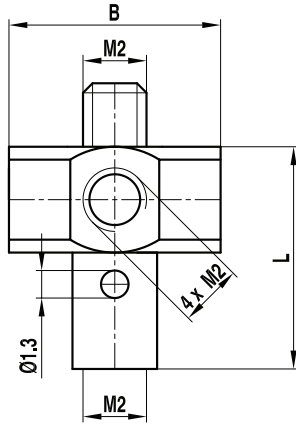
Item number	Renishaw part number	Zeiss part number	DK (mm)	ML1/ML (mm)	DG/D (mm)	L (mm)	DS1/DS (mm)	EAL/B (mm)	Weight (g)
1	A-5004-7610	602030-8321-000			3	5			0.2
2	A-5004-7585	602030-8322-000			3	10			0.5
3	A-5004-7586	602030-8323-000			3	20			1
4	A-5004-7591	602030-8324-000			3	30			1.4
5	A-5555-1308	-			3	35			1.8
6	A-5004-7611	602030-8325-000			3	40			2.2
7	A-5555-2481	-			3	50			2.7

# Renishaw M2 styli, adaptors and accessories for Zeiss analogue probe systems



**Part and description  
(schematic not shown to scale)**

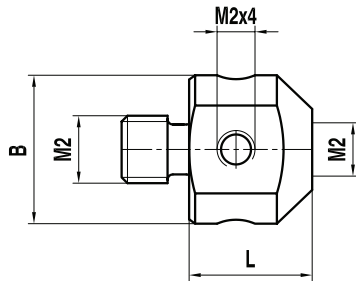
5-way styli holder, rotary  
M2 thread, stainless steel



Item number	Renishaw part number	Zeiss part number	DK (mm)	ML1/ML (mm)	DG/D (mm)	L (mm)	DS1/DS (mm)	EAL/B (mm)	Weight (g)
1	A-5000-3627	602030-8381-000				7.5		7	1.2

**Part and description  
(schematic not shown to scale)**

5-way styli holder, small/large  
M2 thread, stainless steel

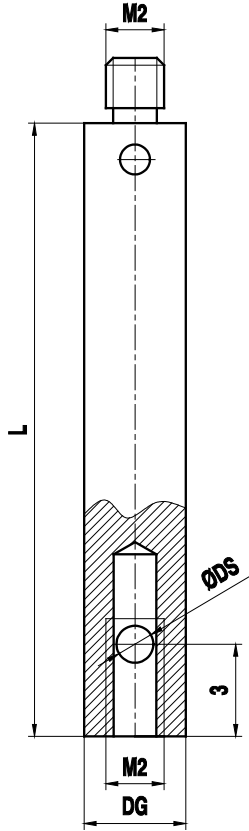


Item number	Renishaw part number	Zeiss part number	DK (mm)	ML1/ML (mm)	DG/D (mm)	L (mm)	DS1/DS (mm)	EAL/B (mm)	Weight (g)
1	A-5555-0320	602030-9103-000				5.4		7	1
2	A-5555-0319	602030-9104-000				9.1		10.5	3.4

**Part and description  
 (schematic not shown to scale)**

Holder for styli 90°  
 M2 thread, stainless steel

Item number	Renishaw part number	Zeiss part number	DK (mm)	ML1/ML (mm)	DG/D (mm)	L (mm)	DS1/DS (mm)	EAL/B (mm)	Weight (g)
1	A-5555-2478	–			3	30	1		2.9
2	A-5555-2479	–			3	30	1.5		2.9

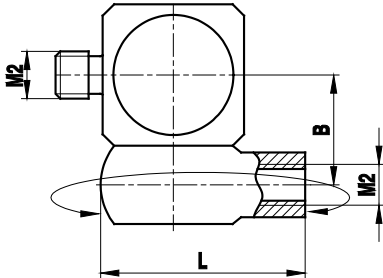


Renishaw M2 styli, adaptors and accessories for Zeiss analogue probe systems



**Part and description  
(schematic not shown to scale)**

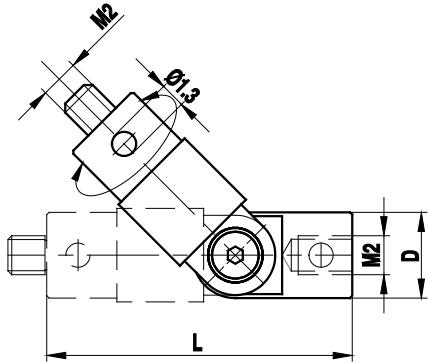
Rotary knuckle  
M2 thread, stainless steel



Item number	Renishaw part number	Zeiss part number	DK (mm)	ML1/ML (mm)	DG/D (mm)	L (mm)	DS1/DS (mm)	EAL/B (mm)	Weight (g)
1	A-5000-7534	602030-9101-000				8		4.5	2

**Part and description  
(schematic not shown to scale)**

Rotary knuckle, slewing range 360°, swing range 180°  
M2 thread, stainless steel



Item number	Renishaw part number	Zeiss part number	DK (mm)	ML1/ML (mm)	DG/D (mm)	L (mm)	DS1/DS (mm)	EAL/B (mm)	Weight (g)
1	A-5000-9902	602030-9105-000			4	16.5			1.5









**Renishaw plc**

New Mills, Wotton-under-Edge  
Gloucestershire, GL12 8JR  
United Kingdom

**T** +44 (0) 1453 524524  
**F** +44 (0) 1453 524901  
**E** [uk@renishaw.com](mailto:uk@renishaw.com)  
[www.renishaw.com](http://www.renishaw.com)

**RENISHAW**   
apply innovation™

## About Renishaw

Renishaw is an established world leader in engineering technologies, with a strong history of innovation in product development and manufacturing. Since its formation in 1973, the company has supplied leading-edge products that increase process productivity, improve product quality and deliver cost-effective automation solutions.

A worldwide network of subsidiary companies and distributors provides exceptional service and support for its customers.

### Products include:

- Additive manufacturing and vacuum casting technologies for design, prototyping, and production applications
- Dental CAD/CAM scanning systems and supply of dental structures
- Encoder systems for high-accuracy linear, angle and rotary position feedback
- Fixturing for CMMs (co-ordinate measuring machines) and gauging systems
- Gauging systems for comparative measurement of machined parts
- High-speed laser measurement and surveying systems for use in extreme environments
- Laser and ballbar systems for performance measurement and calibration of machines
- Medical devices for neurosurgical applications
- Probe systems and software for job set-up, tool setting and inspection on CNC machine tools
- Raman spectroscopy systems for non-destructive material analysis
- Sensor systems and software for measurement on CMMs
- Styli for CMM and machine tool probe applications



For worldwide contact details, visit [www.renishaw.com/contact](http://www.renishaw.com/contact)

RENISHAW HAS MADE CONSIDERABLE EFFORTS TO ENSURE THE CONTENT OF THIS DOCUMENT IS CORRECT AT THE DATE OF PUBLICATION BUT MAKES NO WARRANTIES OR REPRESENTATIONS REGARDING THE CONTENT. RENISHAW EXCLUDES LIABILITY, HOWSOEVER ARISING, FOR ANY INACCURACIES IN THIS DOCUMENT.

© 2004–2015 Renishaw plc. All rights reserved.

Renishaw reserves the right to change specifications without notice.

**RENISHAW** and the probe symbol used in the RENISHAW logo are registered trade marks of Renishaw plc in the United Kingdom and other countries. **apply innovation** and names and designations of other Renishaw products and technologies are trade marks of Renishaw plc or its subsidiaries.

All other brand names and product names used in this document are trade names, trade marks or registered trade marks of their respective owners.



H - 1000 - 3036 - 05

Part no.: H-1000-3036-05-A  
Issued: 11.2015