



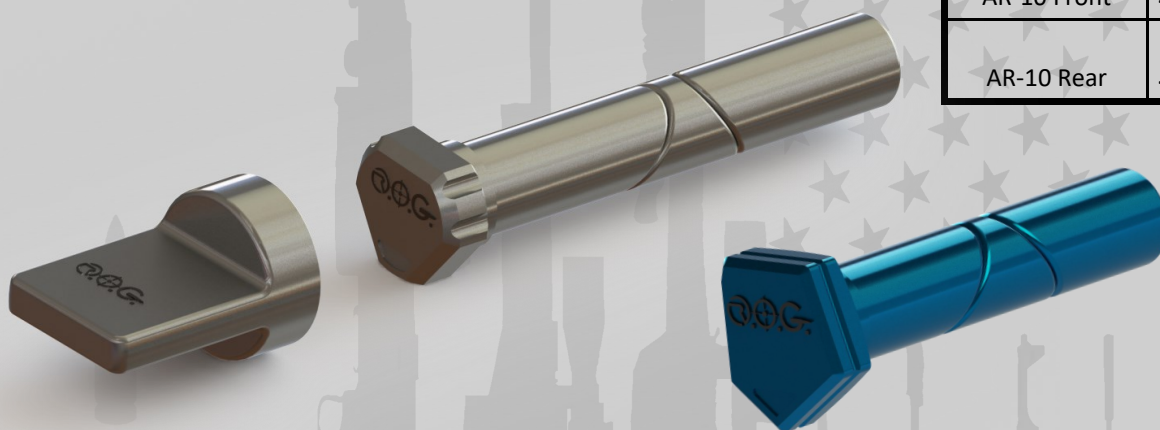
The **LOCKDOWN** 3 piece takedown pin

Key Features:

- Expanding geometry
- 3 piece Ti6 AL 4v ,Gr5 construction
- No Springs or Detents needed
- Removes free play between upper and lower
- Improves Shot to Shot accuracy
- Several anodized and Cerakote finishes to complement your build's performance and appearance.

Technical Specifications

Material	Ti 6AL 4v Gr. 5
Weight	.3-.4 oz
Available for both AR-15 & AR10 Platforms	
AR-15 Front	.245od—1.175 lg
AR-15 Rear	.245od—1.320 lg
AR-10 Front	.274od—1.685lg
AR-10 Rear	.274od—1.320 lg



Does your AR-15 or AR-10 have the shakes? Do you have slop in the upper to lower? Do you get frustrated every time you break down your gun and the takedown pin sticks or you fully take them out only to have the spring and detent fly across the room?

You now have the ultimate solution to your frustration. The LOCKDOWN is a patented new pin assembly produced from Titanium Grade 5, precision machine finished and assembled for smooth operation. The center section of the LOCKDOWN when tightened by the internal T10 screw pulls the upper tight to the lower receiver eliminating any free play, tightening the overall feel of your rifle and increasing the accuracy between shots.





The **LOCKDOWN** 3 piece takedown pin



Installation instructions:

Remove the old Takedown pins, springs and brass detents, these are no longer needed. Prior to installation inspect the takedown pin holes insuring they are clean and free of damage (No large nicks or burs in hole) Loosen the T10 torx screw in the **LOCKDOWN**, (Do Not Remove) lightly slide the **LOCKDOWN** pin into the upper and lower receiver (Do Not Force) if needed use the T10 Torx wrench to help guide the pin through. Using the included wrench, insure the UP marking is pointing toward the upper receiver, tighten the T10 Torx screw until the pin is not easily turned with the custom wrench.

(Assemble at your own risk or seek the help of a professional gunsmith)

Warning: make sure the firearm is unloaded before installation, removal or maintenance. Visually inspect the chamber magazine and firing mechanism to be certain no ammunition is in the firearm. If the **LOCKDOWN** becomes loose or rotates during use stop shooting and immediately unload the firearm and repeat the install instructions. Never use any type of Loctite on the threads during installation.. **Happy shooting.**

