



An Innovative Outdoor Experience



*Pergola Awning- Double Glazing and Fixed Glass Ceiling Systems –
Jointed Awning Bioclimatic Ceiling System- Folding Glass Systems -
Guillotine Glass Systems*

Making your outdoor time both comfortable and aesthetically valuable with professional works and advanced technological designs, our Zara Group US team, are developing the finest solutions for seasonal problems.

Pergola systems, awning systems, zip curtain systems, double glazing systems and more: Our passion to make you meet the dynamism you have always dreamt is reflected in all our designs.



You can have world-class standards in your own garden, balcony and roof with the help of our systems that provide you an optimal level of heat and light while enjoying either sunny and warm or rainy and calm days



WORLD-CLASS SEASONAL SOLUTIONS



Pergola Awning

Being of choice thanks to its tunefulness with all living spaces besides offering the exact same comfort for years, pergola awning shines out with its weather- resistance.

Bioclimatic Ceiling System

Operating based on a specific tensioning system and shining out with its weather-resistance, bioclimatic ceiling system is for the gardens and roofs within cafes and restaurants as well as the houses.

Zip Curtain System

Being preferred with its aesthetical and modern view and used primarily in the shading, zip curtain supports the durability and resistance of the setting as a motor system.

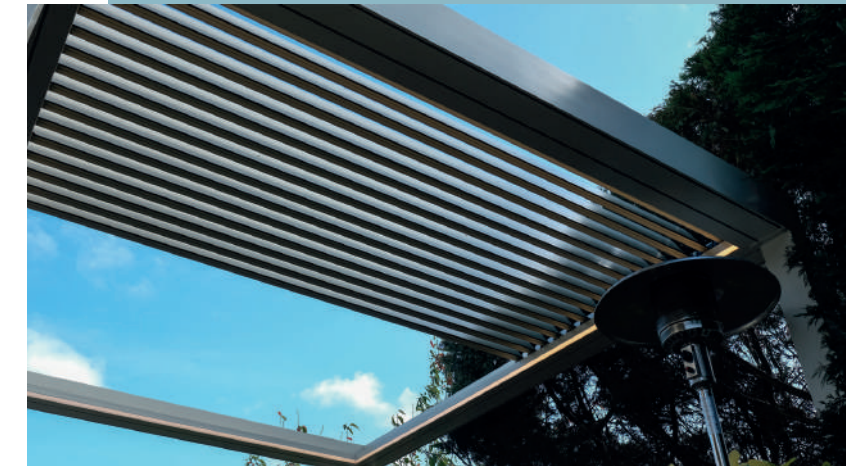
Glass Systems

Offering choices specific to the place, double glazing systems increase both functionality and aesthetical value incrementally with their various and elegant models.

WHAT WE OFFER?

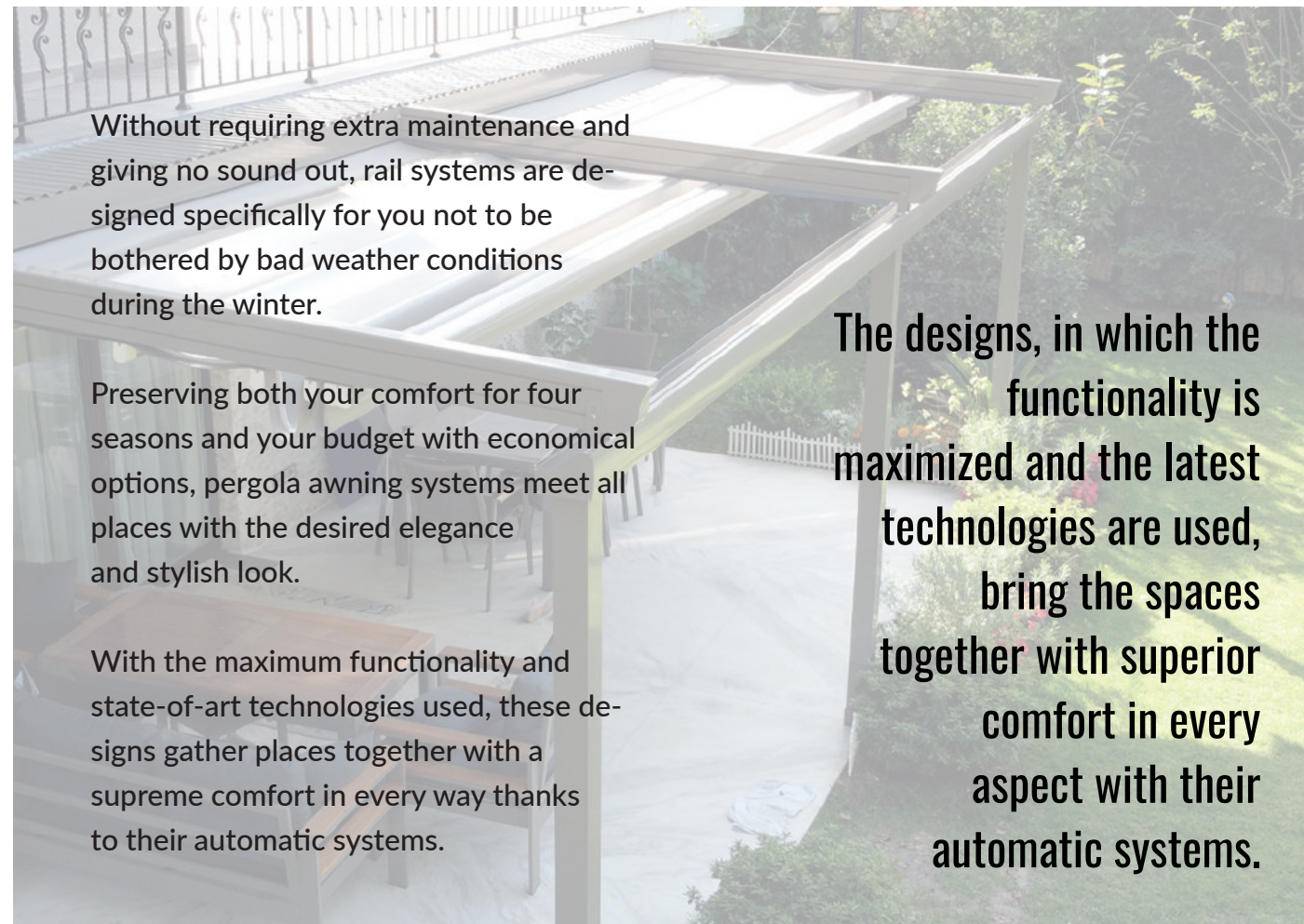
Just choose **Zara Group US** and our new age solutions, and then you will have a unique outdoor experience.

Working based on its experience and expertise of many years to offer its customers the best and youngest products, our team provides both a unique style and a matchless ease of use for both living spaces and workplaces.



PERGOLA SYSTEM

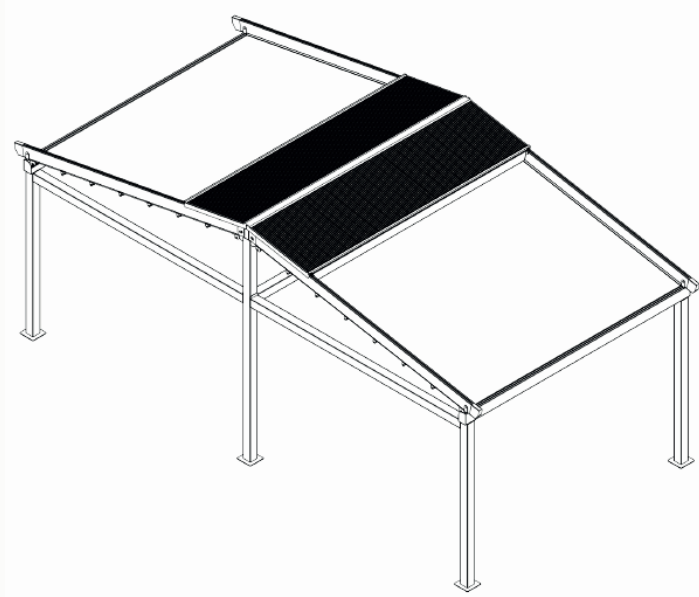
This awning system which operates based on a specific tensioning system both offers the same comfort for years and plays along with all living spaces. Protecting the optimal heat level no matter what the weather condition is, pergola awning system supports the modern coolness of the project while preserving your comfort and budget.















STANDARDS

| | | | |
|---|-----------------------|---|----------------|
|  | SOMFY MOTOR |  | REMOTE CONTROL |
|  | LED LIGHTS |  | PVC FABRIC |
|  | WATER DISPOSAL SYSTEM |  | RAL COLORS |



ADDITIONS

| | |
|--|---------------------------|
|  | WOODEN-LIKE COATING |
|  | RAIN SENSOR |
|  | RAIN SENSOR |
|  | SMARTPHONE REMOTE CONTROL |
|  | SMARTPHONE REMOTE CONTROL |
|  | SUNLIGHT SENSOR |
|  | GLASS SYSTEMS |
|  | VERTICAL ZIP SYSTEMS |
|  | WPC DECK FLOOR |
|  | IRON-STEEL STRUCTURES |

Protection

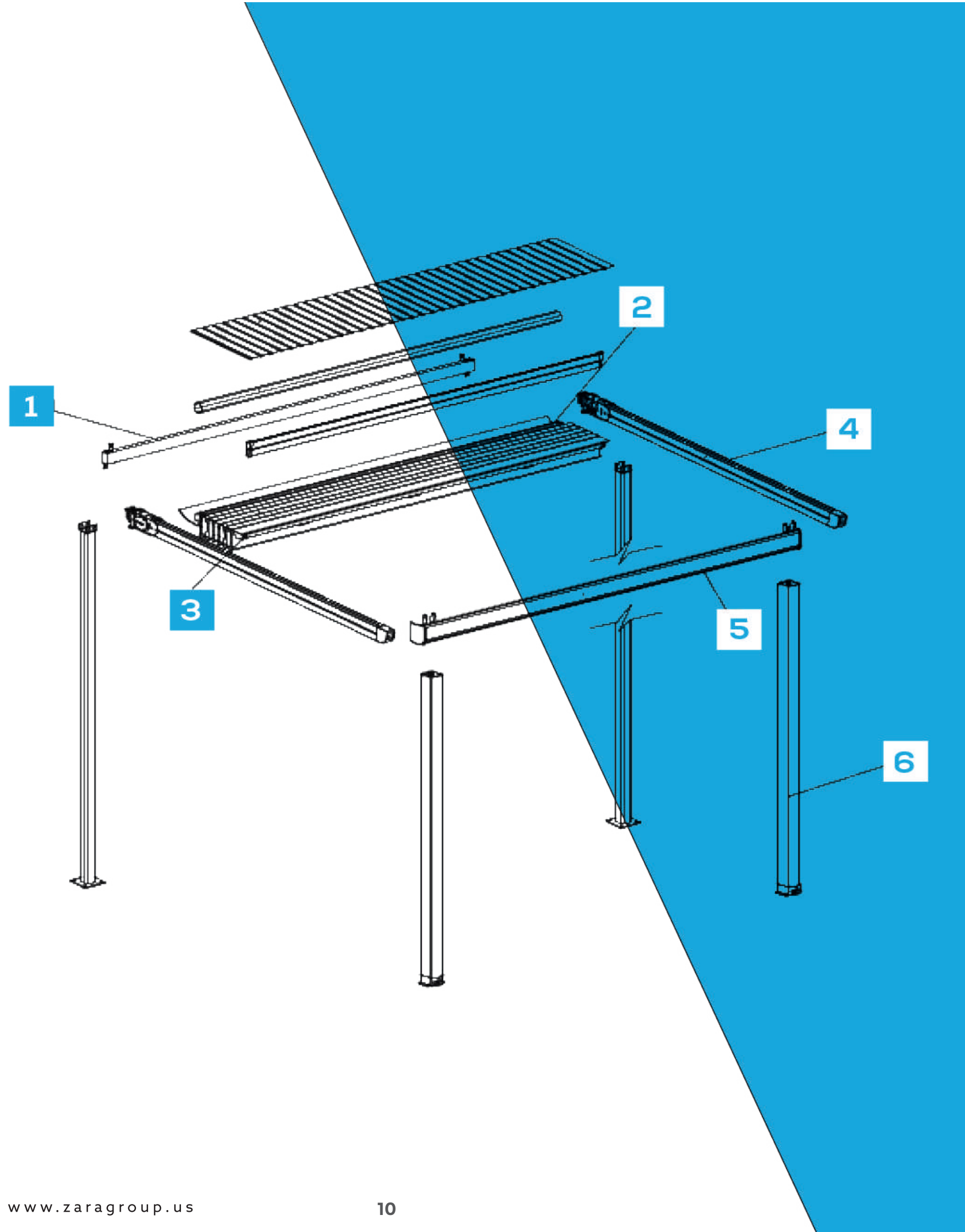
| | | |
|---|---|---|
|  |  |  |
|  |  |  |

Wind Drag

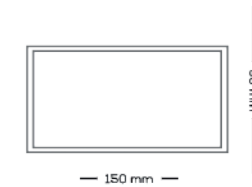
Our pergola models are resistant to wind force at 10 degrees (105 km/h) as per Beaufort Wind Index.

Water Disposal

Gutters have disposal capacity of 145L/h. Under heavy fall, it provides as per the standard of TS EN 12056-3 0,030l/h water disposal



Profile Group



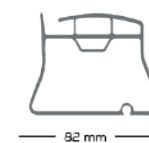
1 BACK BEAM PROFILE

WEIGHT
2.12 kg/m
THICKNESS
2 mm



PIPE PROFILE

WEIGHT
1.44 kg/m
THICKNESS
2.1 mm
Ø76 mm
Ø65 mm



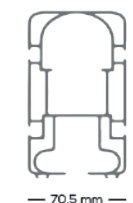
2 BIGGER FABRIC PROFILE

WEIGHT
1.85 kg/m
THICKNESS
2 mm



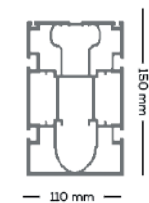
3 SMALLER FABRIC PROFILE

WEIGHT
1.37 kg/m
THICKNESS
2 mm



4 RAIL PROFILE

WEIGHT
4.49 kg/m
THICKNESS
2 mm



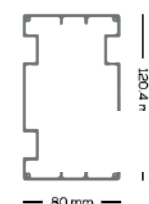
BIG RAIL PROFILE

WEIGHT
6.747 kg/m
THICKNESS
2.5 mm



5 GUTTER

WEIGHT
4.71 kg/m
THICKNESS
2.5 mm



6 SUPPORT

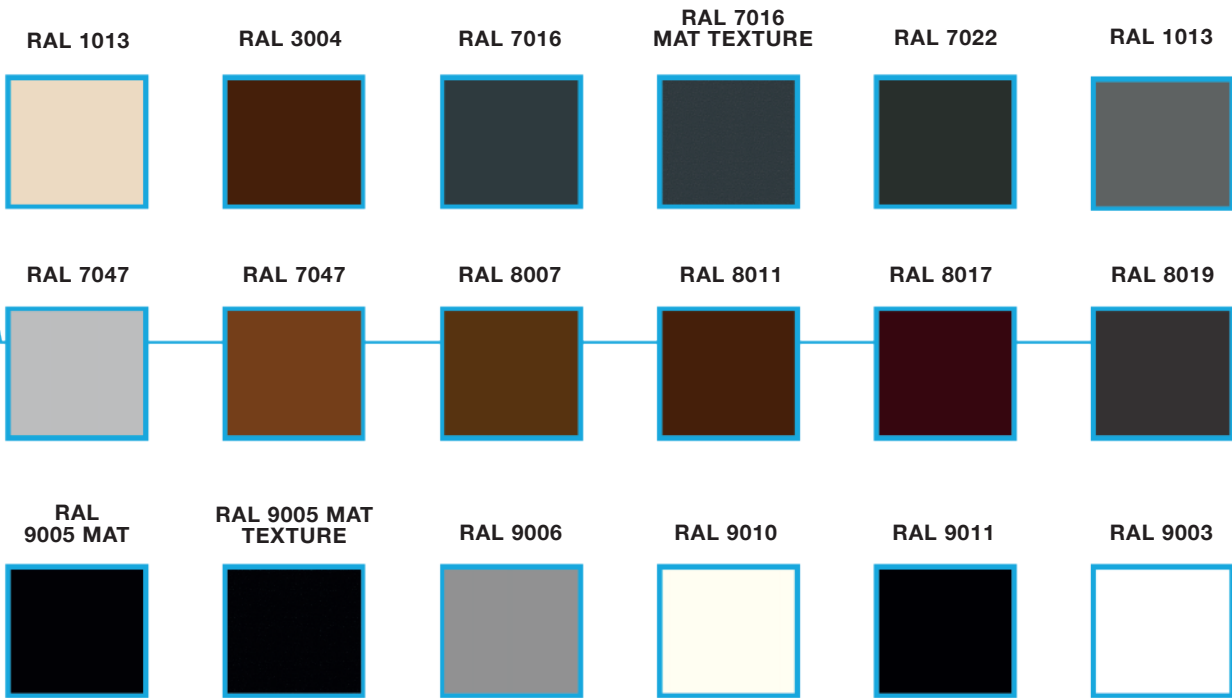
WEIGHT
3.70 kg/m
THICKNESS
2.8 mm

ALUMINIUM

Aluminium color options

The system profiled are painted by electrostatic powder coating

STANDARD COLORS

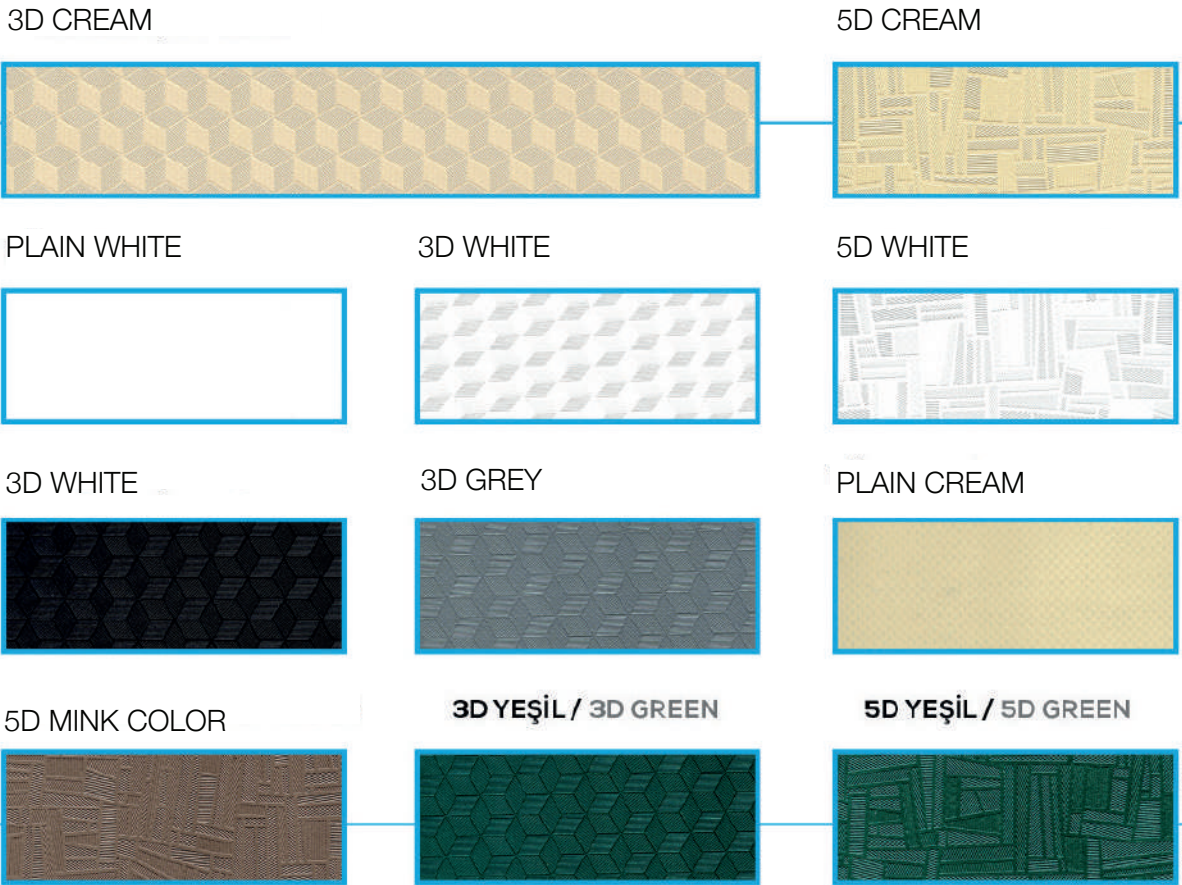


SPECIAL COLORS



FABRIC

This pergola system uses architectural blackout fabrics produced with PVC material. Blockout fabric is a membrane fabric comprised of high-quality PVC blocks with a 5 year guarantee and with all international quality documents and certificates. It is manufactured at an integrated facility in compliance with European standards.



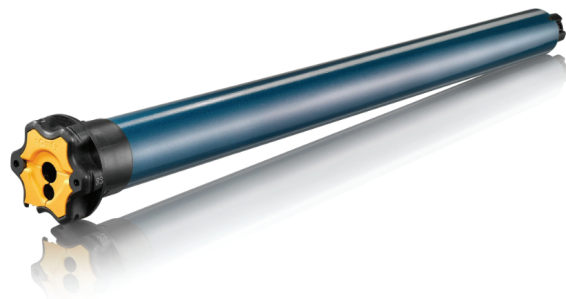
| B8118 / 1622 | | |
|---------------------|--------------------------|-------------------------|
| Fabric Structure: | 100% PES/ 1100 dtex | |
| Weight: | 850 g/m² | DIN EN ISO 2286/ 2 1998 |
| Characteristics: | ABUV / SOP | |
| Surface: | 1/1 Bright | |
| Tensile Strength | | |
| Warp Wrap: | 2500 N/ 5CM 2300 N/5CM | EN ISO 1421/11998 |
| Laceration Strength | | |
| Warp Wrap: | 250 N 200 N | DIN 53363 2003 |
| Conglutination: | 1000 N / 5CM | EN ISO 2411 2000 |
| Heat Resistance: | -30/ +70 C | DIN EN 1876/ 2 1998 |
| Light Sensitivity: | 7-8 | ISO 105 B02 1988 |
| Fire Resistance: | M2 | NFP 92 507 2004 |

MOTOR

The motor's durability has been tested in the most challenging climactic conditions. Somfy motors are inspected before leaving the factory and being sent to your home. These motors have a long-term reliability guarantee. Like all Somfy equipment, the motors naturally meet all the safety standards.

Somfy works side by side with various other manufacturers, adding quality electrical functionality to your awnings and shades. This equipment presents you with the productivity and reliability as a product of shared professional information and expertise. Everytime you see the "Powered by Somfy" label on your awning or shades, rest assured you have a guarantee product with a quality motor. Somfy Motors are guarantee for Five years.

somfy®



CONTROL | Situo® 1 RTS

Situo hand-held remotes control one individual window covering or one group of window coverings. Its modern finish complements any décor.



Comfort & Convenience

- Ideal to manage natural light.
- Instantly block glare or create instant privacy with a simple button press.
- Includes a discreet wall holder.

Radio Technology Somfy

- Compatible with all RTS-powered systems, controls, and accessories so you can mix and match options to maximize product performance.
- Exclusive Somfy "my" feature saves a favorite/preferred product position.
- RTS is omni-directional, so no need to aim the remote at the product being controlled.

CONTROL | Telis 16 RTS

The Telis 16 RTS hand-held remote extends control of motorized interior and exterior products to 16 different channels of control.

Comfort & Convenience

- Close and open groups of window treatments with a single gesture. The tedious task of raising and lowering a group of coverings is now simplified with the Telis 16 RTS.
- This 16-channel remote control features an on-screen display for easy navigation and offers the convenience of adjusting window coverings in multiple areas throughout the home.

Energy Savings

- Saves energy and reduces heat gain/loss depending on seasonal preferences.

Ease of Use

- Easy programming, greater personalization with a few presses of a button.



CONTROL | TaHoma®

TaHoma® is a WiFi to RTS gateway that can control up to 40 RTS channels. Create scenes and schedules using an app while home or away, or integrate with third-party systems. TaHoma works with Google Assistant and Amazon Alexa, allowing for natural voice commands to control shades.



Smart Home Convenience

- Maximize energy savings and privacy, and control glare by creating timed events to automatically position RTS shading as desired.
- Use multiple TaHomas to create a whole home control solution.
- Create an ideal setting by creating up to 40 scenes and 40 schedules to automatically operate multiple RTS applications such as shades, awnings, and screens.
- Remote access using a mobile app while home or away lets users control shades from virtually anywhere.

Reliable & Scalable

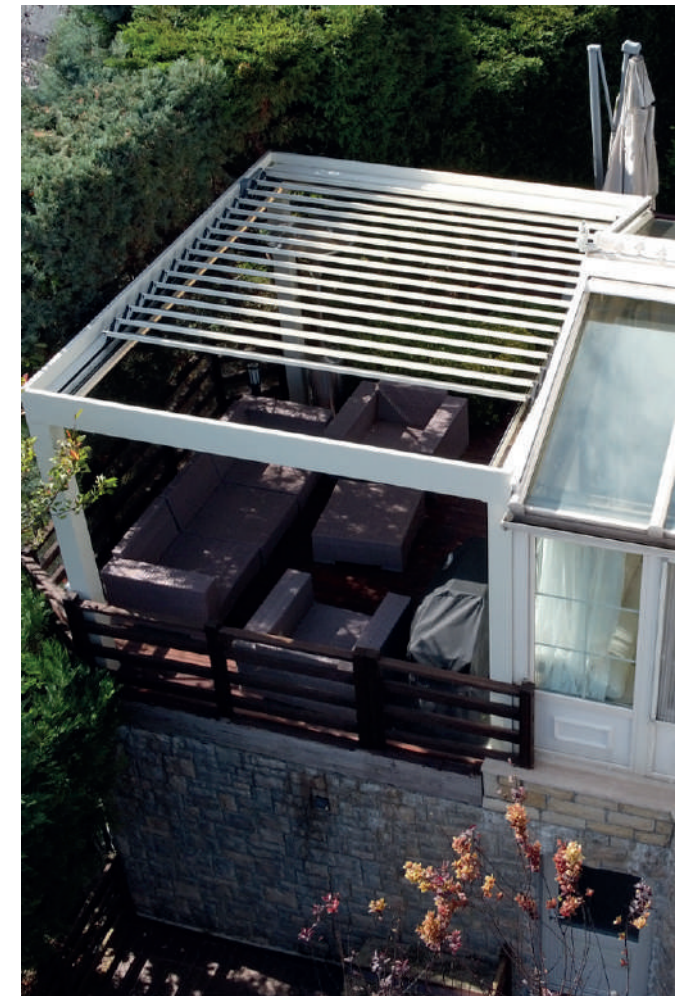
- Join up to 10 TaHoma interfaces for multi-zone control.
- Optional Ethernet Adaptor allows for a direct, wired connection to the internet for optimal connectivity.

Compatibility

- Compatible with most third-party systems such as Control4®, Crestron, Savant, Elan, RTI, URC, and Brilliant.
- Works with with Amazon Alexa, IFTTT, Phillips Hue, Samsung SmartThings, and Google Assistant.

BIOCLIMATIC AND ROOLING ROOF CEILING SYSTEM

It meets seasonal needs for the whole year. With their maximum functionality and state-of-art technologies, these designs gather places together with superios comfort



These designs, which you can use as how you desire be it fully closed or fully open in each season, has an ease and quick use option with remote control.

There are many profile options suitable for the general structure of architectural project. The great variety of pergola colors is connected to the structural variety for various needs. Generally used with a front supporter, the awning system can also be utilized as wall-mounted, if desired.

This pergola usage, which increases aesthetical value as well as functionality, makes it possible to renew outdoor creatively



A Unique Comfort
Lasting 4 Seasons

What is the Avail of Bioclimatic Ceiling System?

The system protects you from high temperatures and dense solar radiation during the summer, thanks to its rails system and special fabric made of three different layers. Additionally, this system has the same functionality during winter, isolating you from the harsh winter weather conditions.



Rails function quietly and do not require any extra maintenance.



These systems, maintain optimal heat level against all weather conditions, which represents an important tool for energy saving



These pergola not only offers comfort for four seasons and reduces expenses, it adds elegance, and value to your home



These Pergolas are one of the most important structures components compatible with new design trends were technology meets design, sophistication and functionality.



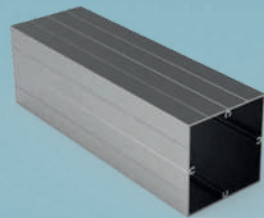
Motor tube
Profile Nr: 5410
Weight kg/m: 1,935
(58.55 x 83.90 x 1.7mm)



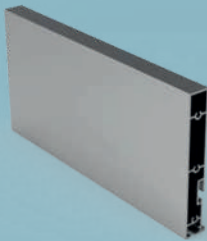
Rail upper belt
Weight kg/m: 0,845



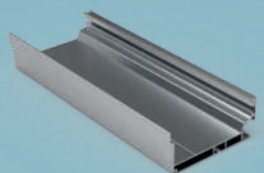
Trigger belt
Weight kg/m: 1,119



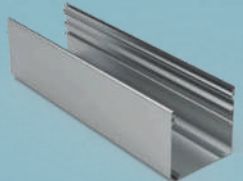
Supporter Profile
Profile Nr: 2067
Weight kg/m: 6,819



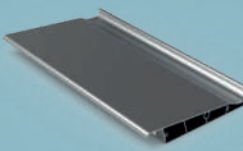
Carrier profile
Profile Nr: 2088
Weight kg/m: 7,213



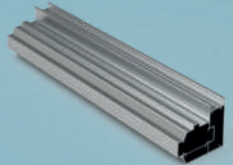
Gutter
Profile Nr: 2089
Weight kg/m: 4,900



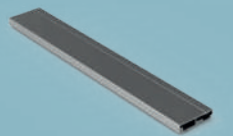
Motor box
Profile Nr: 2090
Weight kg/m: 3,075



Panel profile
Profile Nr: 2096
Weight kg/m: 3,997



Rails
Profile Nr: 2093
Weight kg/m: 2,106



Rail cover
Profile Nr: 2094
Weight kg/m: 0,833



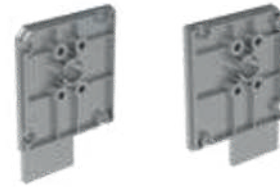
Supporter ground fixing



Supporter gutter fixing



Rails end cover



Motor box end covers



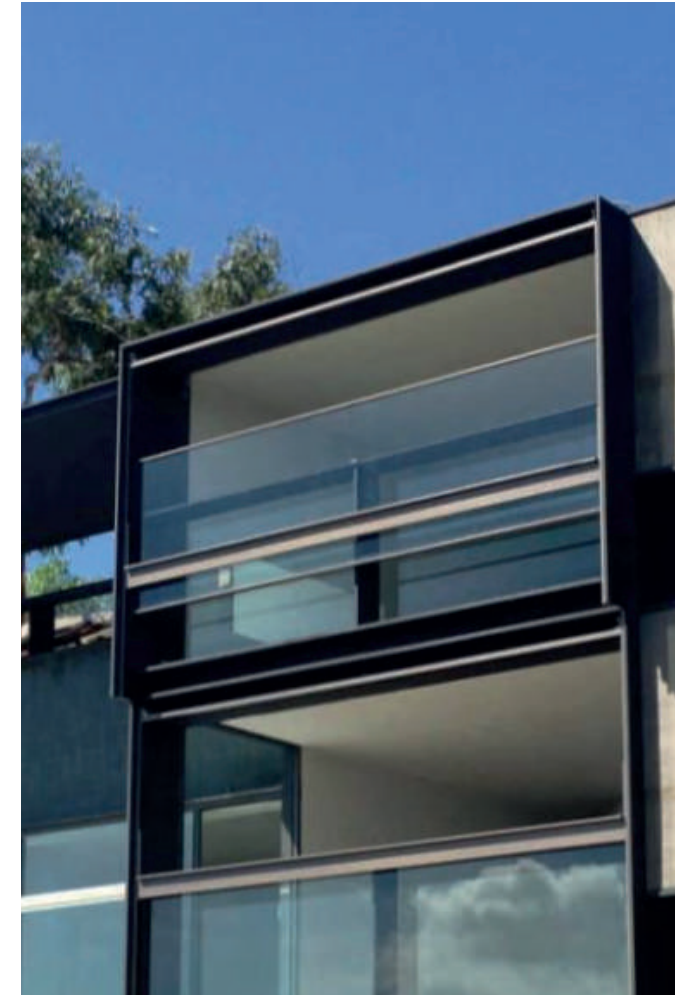
Motor box end cover
Profile Nr: 2091
Weight kg/m 0,915



Panel roof cover
Profile Nr: 2092
Weight kg/m 0,323

GUILLOTINE GLASS SYSTEMS

Meet guillotine glass thermal insulation systems shaped according to the desired color and design and built for creating new living spaces enclosing winter gardens, restaurants or roofs with beautiful views.



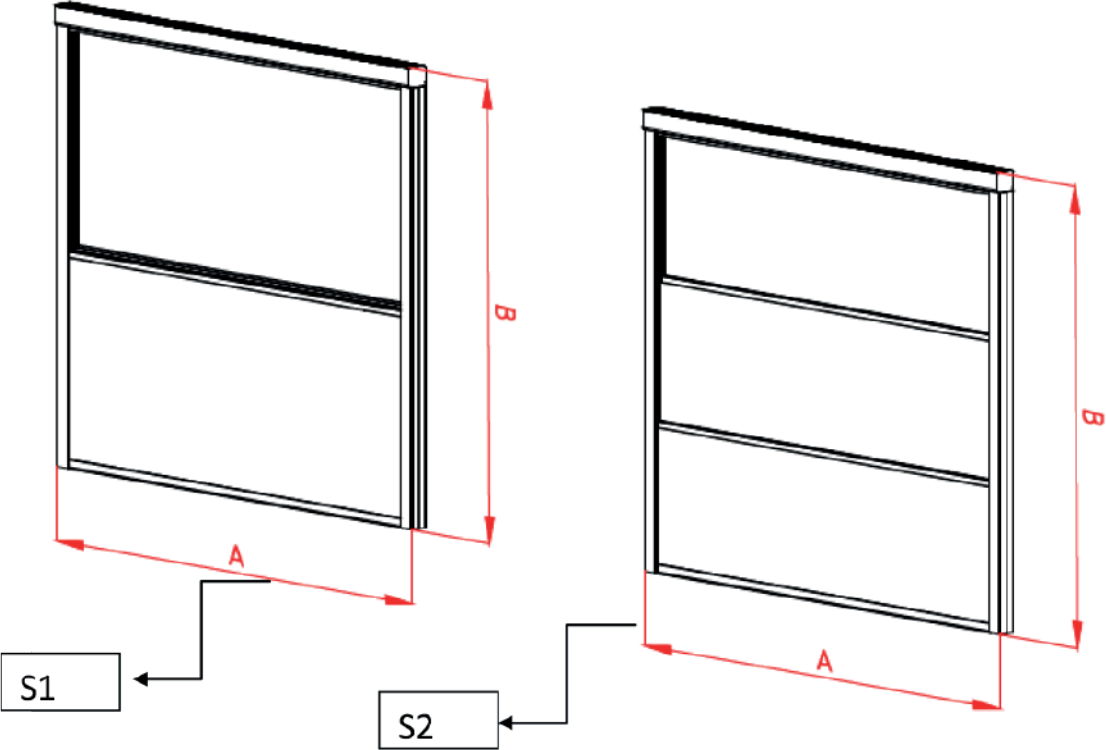
Guillotine glass systems which can be used for four seasons preserves the warmth in the winter and coolness in the summer thanks to their polyamide barriers.

Glass panels that can open easily in everywhere they are built give a great ease of use.

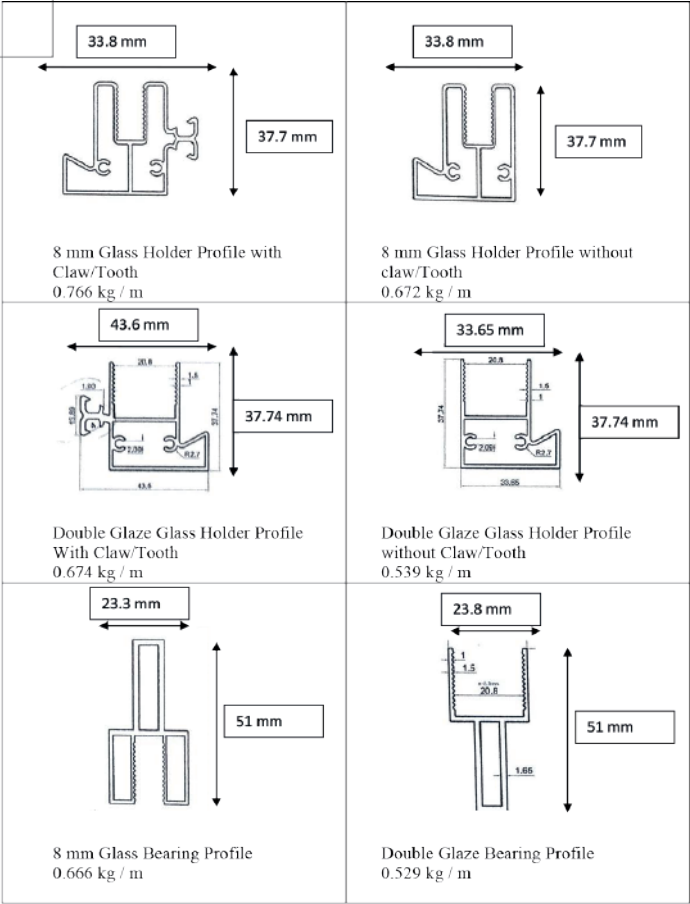
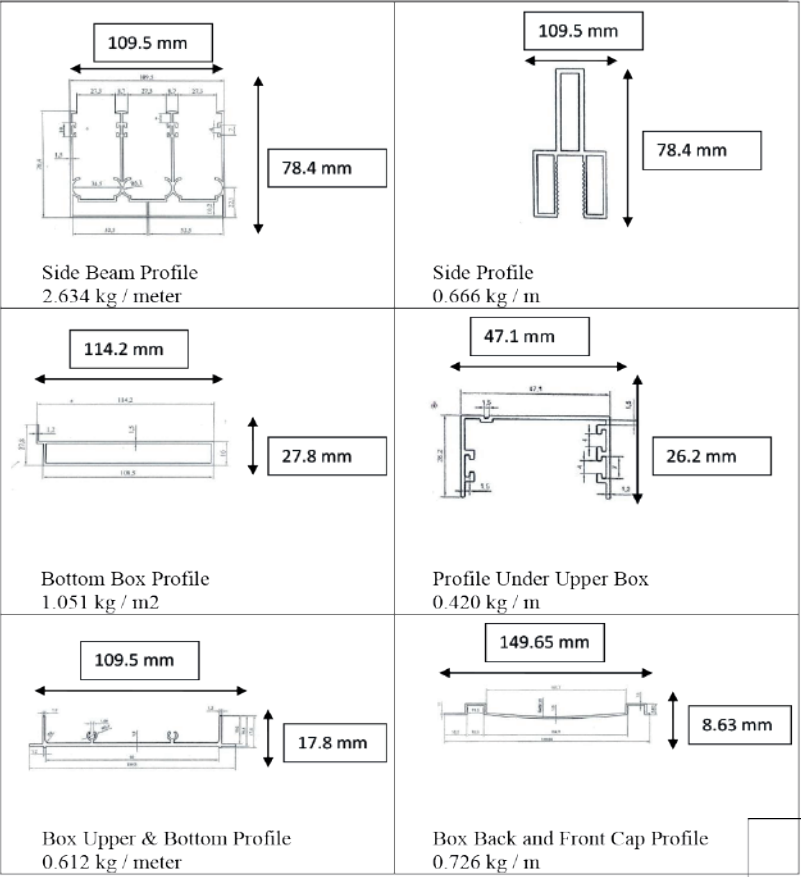
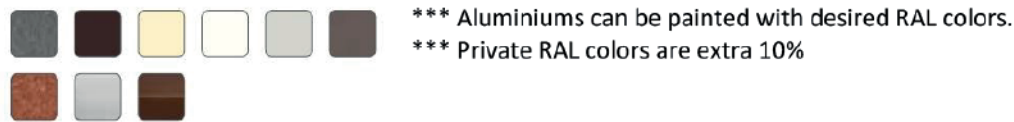
We install the desired glass system with our three different guillotine types based on our expertise



Technical Details

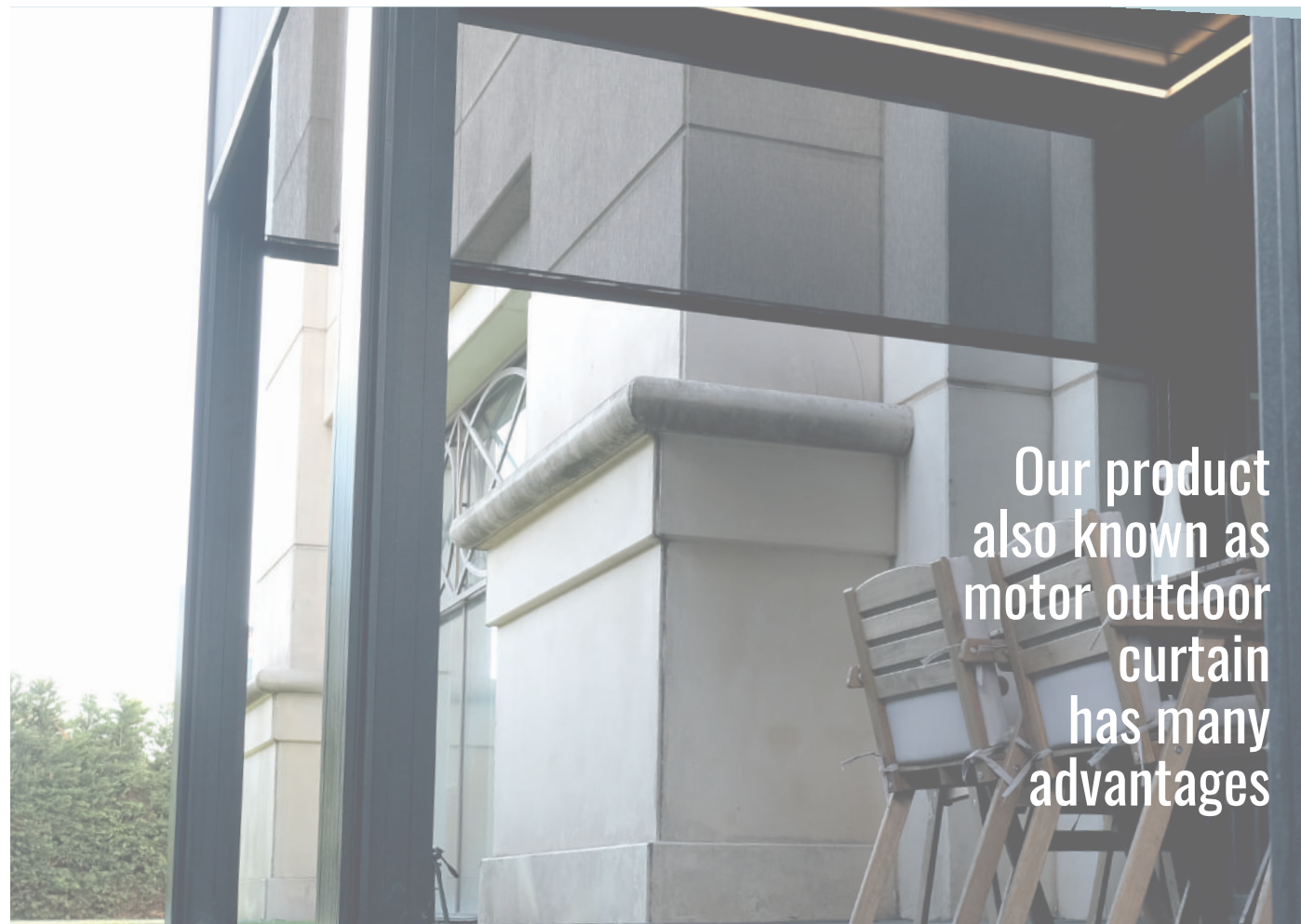
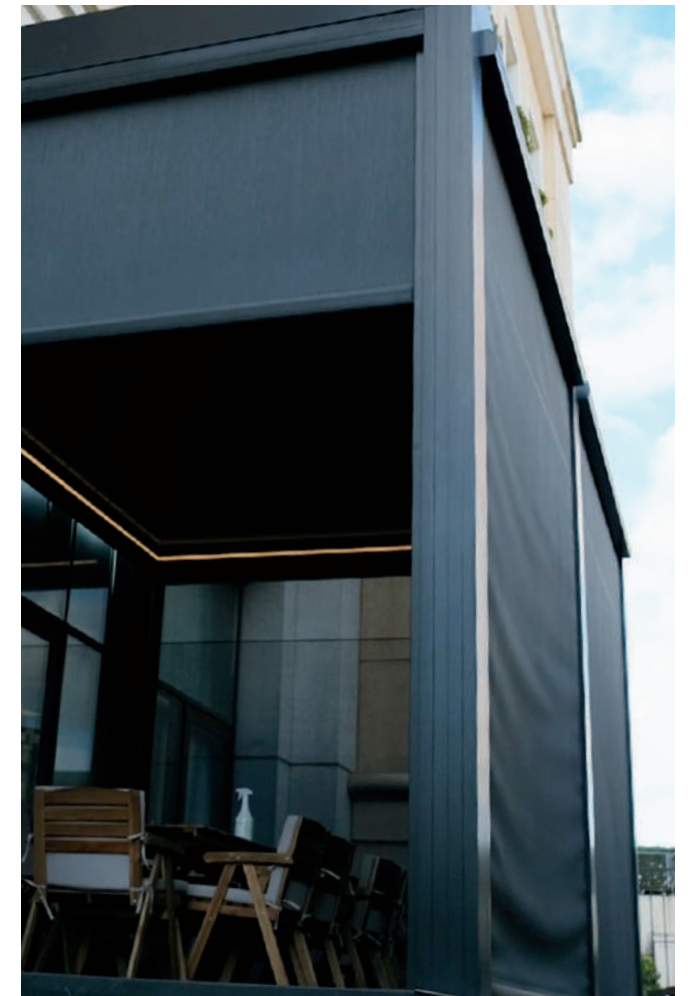


| TECHNICAL DETAILS | S1 | S2 |
|-------------------------|----------------------|----------------------|
| System Glasses | 1+1 | 1+2, 1+3 |
| Maximum Width (A) | 4500 mm | 3600 mm |
| Maximum Height (B) | 2400 mm | 3600 mm |
| Glass Thickness | 8 mm, 10 mm | 8 mm, 10 mm |
| Maximum Movable Weight | 150 kg | 260 kg |
| System Warranty | 5 Years | 5 Years |
| Insulation | Heat, cold | Heat, cold |
| Thermal Insulation | Uw value 1.1-1.5W/m2 | Uw value 1.1-1.5W/m2 |
| Air Permability | Class 4 En 12207 | Class 4 En 12207 |
| Rain | Class 7A En 12200 | Class 7A En 12208 |
| Resistance to Wind Load | Class C4/B5 En 12210 | Class C4/B5 En 12210 |
| Sound Insulation | Up to 39 dB | Up to 39 dB |
| Security | Up to RC2 En 1627 | Up to RC2 En 1627 |



ZIP CURTAIN SYSTEMS

Zip curtain systems, are motorized curtains controlled remotely offering shade and comfort beyond expectations. The curtains fabric is placed in the curtain mechanism unfurling the curtain through two thin rails.



Our product also known as motor outdoor curtain has many advantages

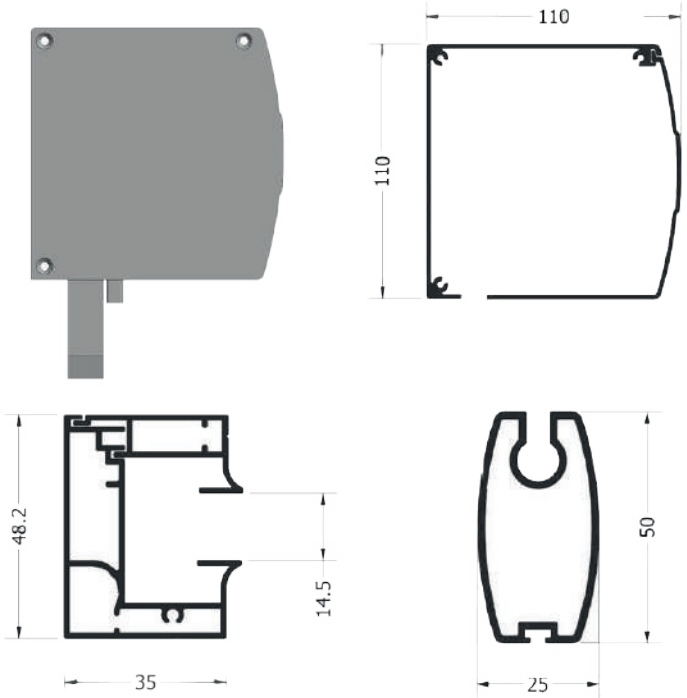
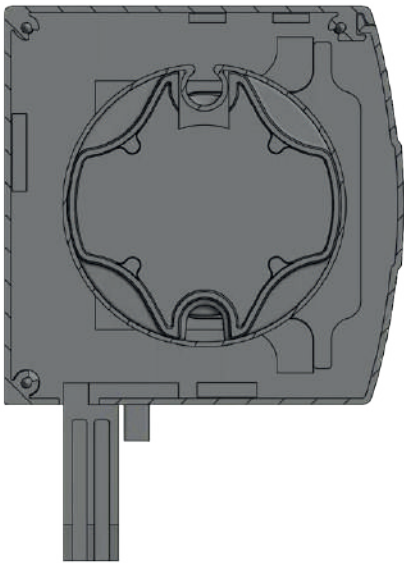
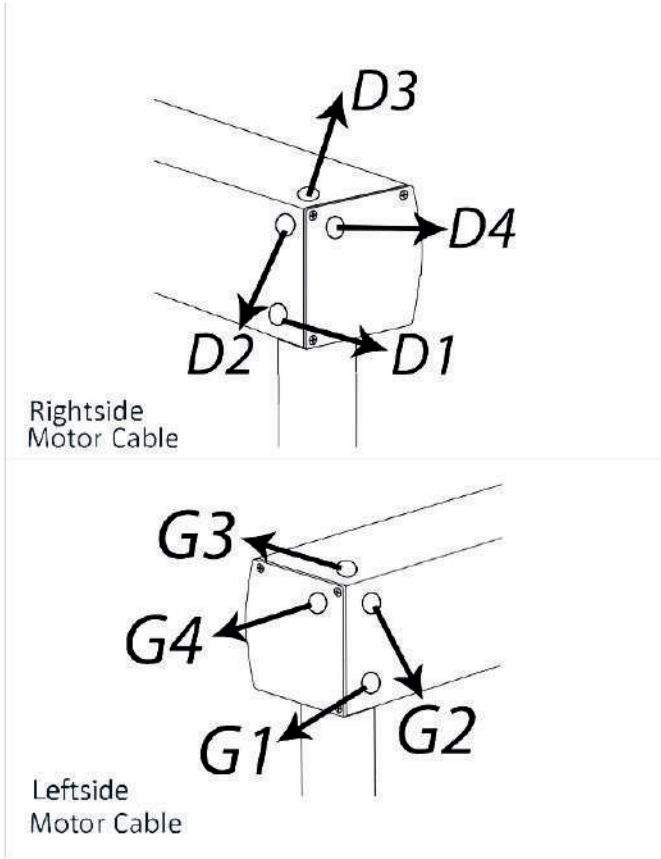
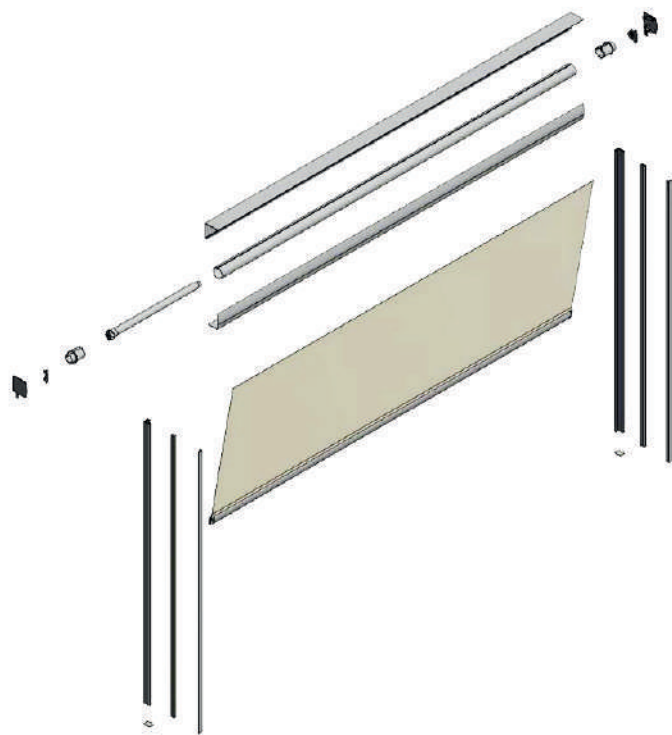
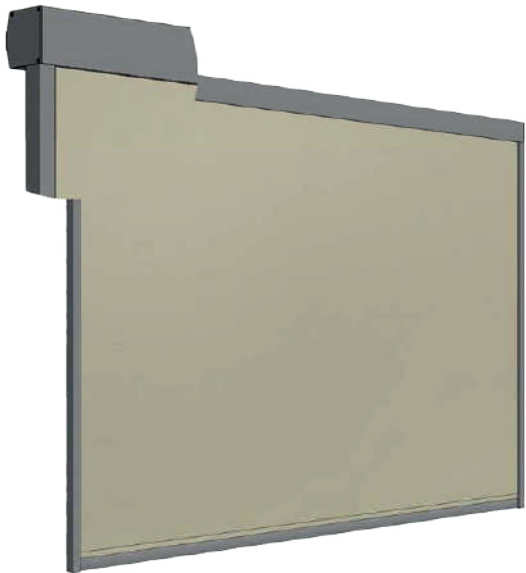


Technical Details

Front Face



Back Side





CONTACT

John AKKUS
john@zaragroup.us



ZARA GROUP

www.zaragroup.us