



Certificate of Analysis

CANNABUSINESS LABORATORIES, LLC

Customer:

Black Barn Holdings
2221 Jessamine Station Rd.
Wilmore, KY 40390

Sample ID **221103006**
Order Number **CB221103002**
Sample Name **Elektra**

External Sample ID

Received Date **11/3/2022**
COA Released **11/7/2022**

Batch Number
Product Type **Flower**
Sample Type **Flower**

Comments *Delta 9 THC: 0.066% Dry Weight, 0.659mg/g*

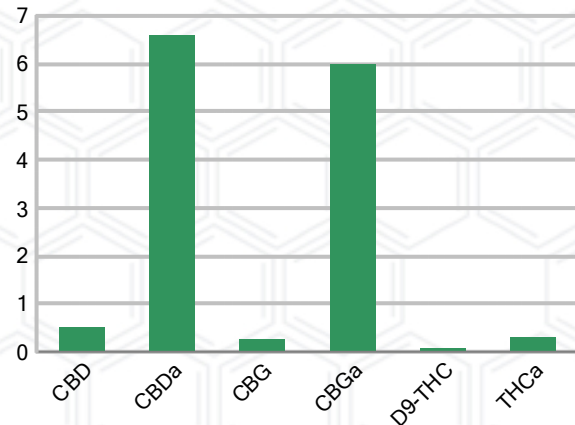
CANNABINOID PROFILE

Analyte	LOQ (%)	% Dry Weight	mg/g
CBC	0.01	ND	ND
CBD	0.01	0.515	5.153
CBDa	0.01	6.599	65.99
CBDV	0.01	ND	ND
CBG	0.01	0.262	2.623
CBGa	0.01	5.984	59.84
CBN	0.01	ND	ND
d8-THC	0.01	ND	ND
d9-THC	0.01	0.066	0.659
THCa	0.01	0.306	3.064
Total Cannabinoids		13.73	137.3
Total Potential THC		0.335	3.347
Total Potential CBD		6.303	63.03
Total Potential CBG		5.516	55.16
Ratio of Total Potential CBD to Total Potential THC			18.82 : 1
Ratio of Total Potential CBG to Total Potential THC			16.47 : 1

SAMPLE IMAGE



CANNABINOIDS % Dry Weight



*Total Cannabinoids refers to the sum of all cannabinoids detected.

*Total Potential CBD = (0.877 x CBDa) + CBD. *Total Potential THC = (0.877 x THCa) + THC. *Total Potential CBG = (0.877 x CBGa) + CBG.

*Total Potential THC/CBD are calculated to take into account the loss of an acid group during decarboxylation.



J. Hobgood
Laboratory Manager

SIGNATURE

Jamie Hobgood

LABORATORY MANAGER

11/07/2022 11:36 AM

DATE

This product has been tested by CannaBusiness Laboratories using validated testing methodologies and a quality system. Values reported relate only to the product tested. CannaBusiness Laboratories makes no claims as to the efficacy, safety, or other risks associated with any detected or non-detected levels of any compounds reported herein. This Certificate shall not be reproduced except in full, without the written permission of CannaBusiness Laboratories. Photo is of sample received by the lab and may vary from final packaging. The results apply to the sample as received.



Certificate of Analysis

CANNABUSINESS LABORATORIES, LLC

Customer

Black Barn Holdings
2221 Jessamine Station Rd.
Wilmore, KY 40390



Overall Batch Results	
Pesticide	Moisture Content
Potency	Water Activity
Mycotoxins	Heavy Metals
Microbial Screen	Residual Solvents
Terpenoids	

Sample Name: Elektra

Sample ID: 221103006

Order Number: CB221103002

Product Type: Flower

Sample Type: Flower

Received Date: 11/03/2022

Batch Number:

COA released: 11/07/2022 11:36 AM

Potency (mg/g) Dry Weight

Date Tested: 11/04/2022

Method: CB-SOP-028

Instrument:

0.335 %	6.303 %	13.73 %	137.3 mg/g
Total THC	Total CBD	Total Cannabinoids	Total Cannabinoids

Analyte	Result	Units	LOQ	Result	Units
CBC (Cannabichromene)	ND	%	0.010	ND	mg/g
CBD (Cannabidiol)	0.515	%	0.010	5.153	mg/g
CBDa (Cannabidiolic Acid)	6.599	%	0.010	65.99	mg/g
CBDV (Cannabidivarin)	ND	%	0.010	ND	mg/g
CBG (Cannabigerol)	0.262	%	0.010	2.623	mg/g
CBGa (Cannabigerolic Acid)	5.984	%	0.010	59.84	mg/g
CBN (Cannabinol)	ND	%	0.010	ND	mg/g
D8-THC (D8-Tetrahydrocannabinol)	ND	%	0.010	ND	mg/g
D9-THC (D9-Tetrahydrocannabinol)	0.066	%	0.010	0.659	mg/g
THCa (Tetrahydrocannabinolic Acid)	0.306	%	0.010	3.064	mg/g

Potency (mg/g) Dry Weight

Date Tested: 11/04/2022

Method: CB-SOP-028

Instrument:

Analyte	Result	Units	LOQ	Result	Analyte	Result	Units	LOQ	Result
Percent Moisture	11	%	0.010						



J. Hobgood
Laboratory Manager

Jamie Hobgood

11/07/2022 11:36 AM

SIGNATURE

DATE

NT = Not tested, ND = Not detected; LOQ = Limit of Quantitation; <LOQ = Detected; >ULOL = Above upper limit of linearity; CFU/g = Colony forming units per 1 gram; TNTC = Too numerous to count

This product has been tested by CannaBusiness Laboratories using validated testing methodologies and a quality system. Values reported relate only to the product tested. CannaBusiness Laboratories makes no claims as to the efficacy, safety, or other risks associated with any detected or non-detected levels of any compounds reported herein. This Certificate shall not be reproduced except in full, without the written permission of CannaBusiness Laboratories. Photo is of sample received by the lab and may vary from final packaging. The results apply to the sample as received.