

MECOX FIELDS

BRIDGEHAMPTON, NEW YORK
1988



General view

This project occupies fourteen acres of land that have been rezoned from agricultural to residential use. Our responsibilities included the overall site planning as well as architectural design. The site plan departs from the conventional subdivision pattern in that three acres have been retained as a reserve area at the northwest corner of the site. This reserve adjoins land that is to remain in farming.

In designing the seven houses, we endeavored to provide the potential buyer with a variety of plans whose individuality is obtained from the placement and layout of such amenities as stair halls, bay windows, and double height spaces. As we coordinated the planning of each house with the others, we were careful to maintain exposures of screened porches to catch prevailing ocean breezes. The exteriors of the houses attempt a similar individualized treatment while working within the common language of the local vernacular; interest arises from the extensive utilization of subsumed porches enveloped by broad hipped and gabled roofs punctuated by dormers, and from four over one double hung windows adapted from stock sash.



LOT 1 WEST ELEVATION



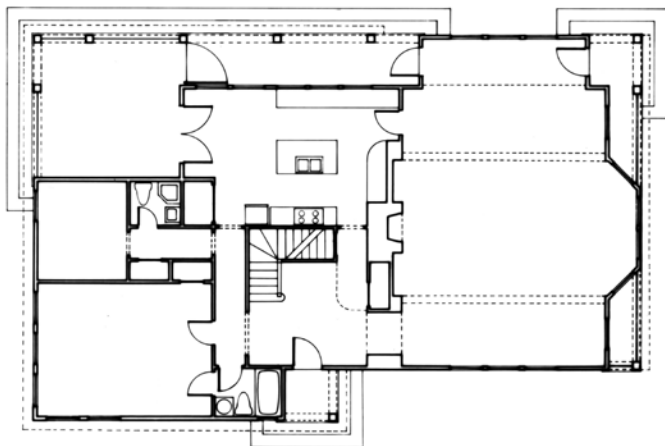
LOT 1 EAST ELEVATION



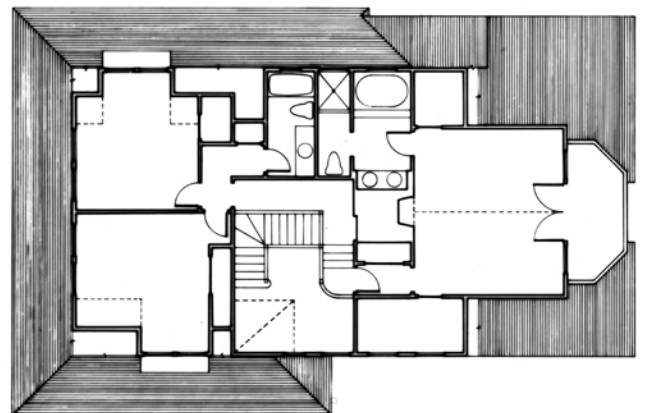
LOT 1 SOUTH ELEVATION



LOT 1 NORTH ELEVATION



LOT 1 FIRST FLOOR PLAN



LOT 1 SECOND FLOOR PLAN





Lot 1 house



LOT 7 WEST ELEVATION



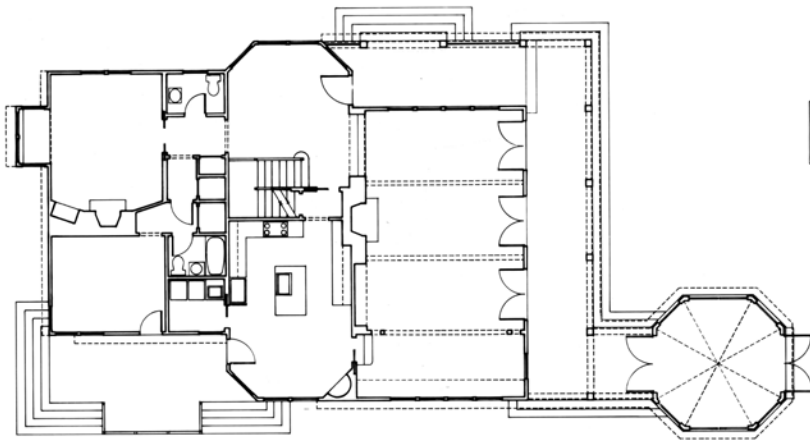
LOT 7 NORTH ELEVATION



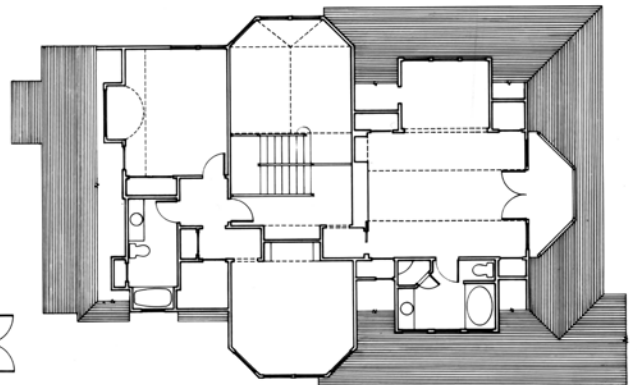
LOT 7 SOUTH ELEVATION



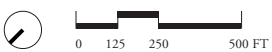
LOT 7 EAST ELEVATION



LOT 7 FIRST FLOOR PLAN



LOT 7 SECOND FLOOR PLAN





Lot 7 house