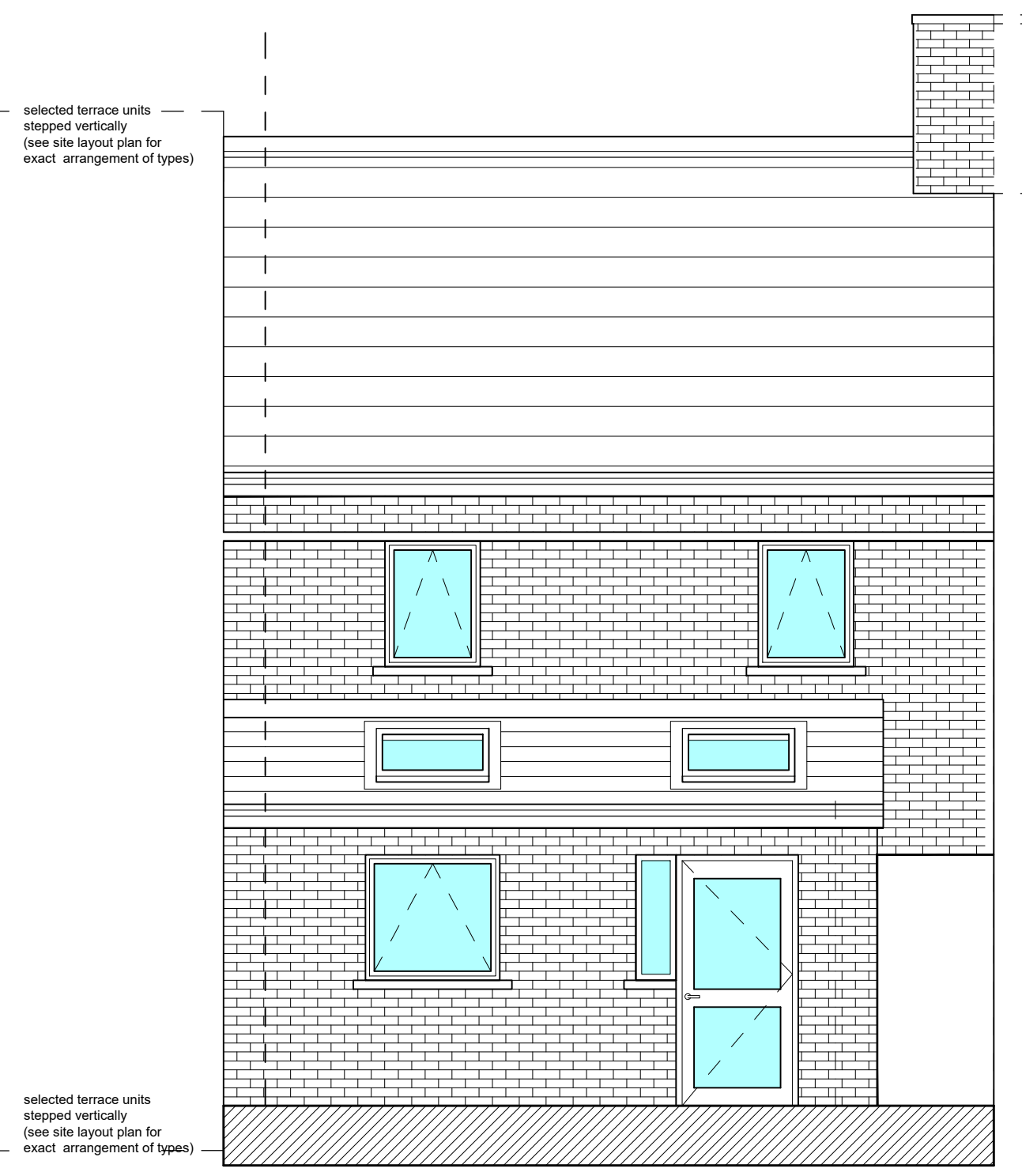
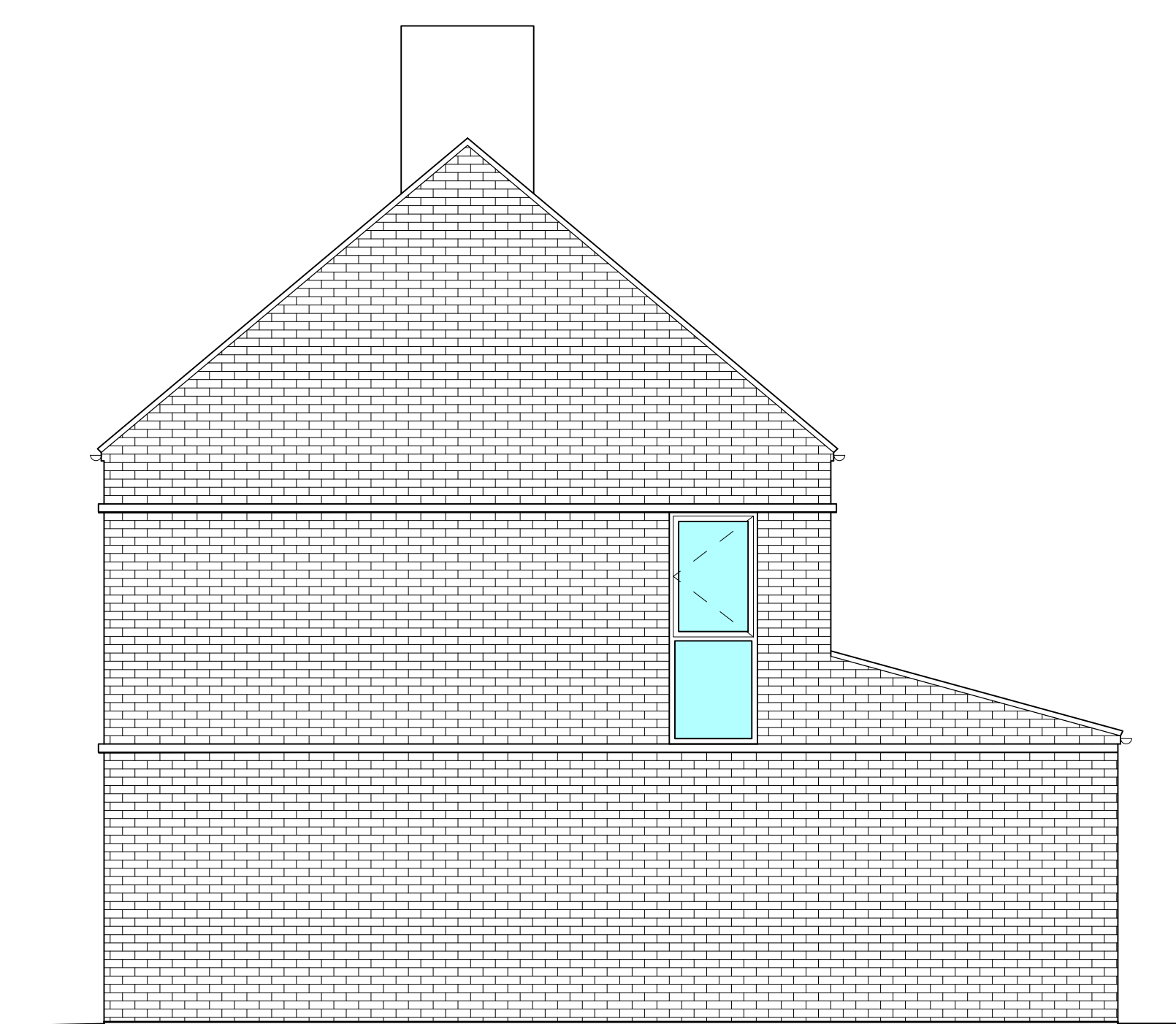


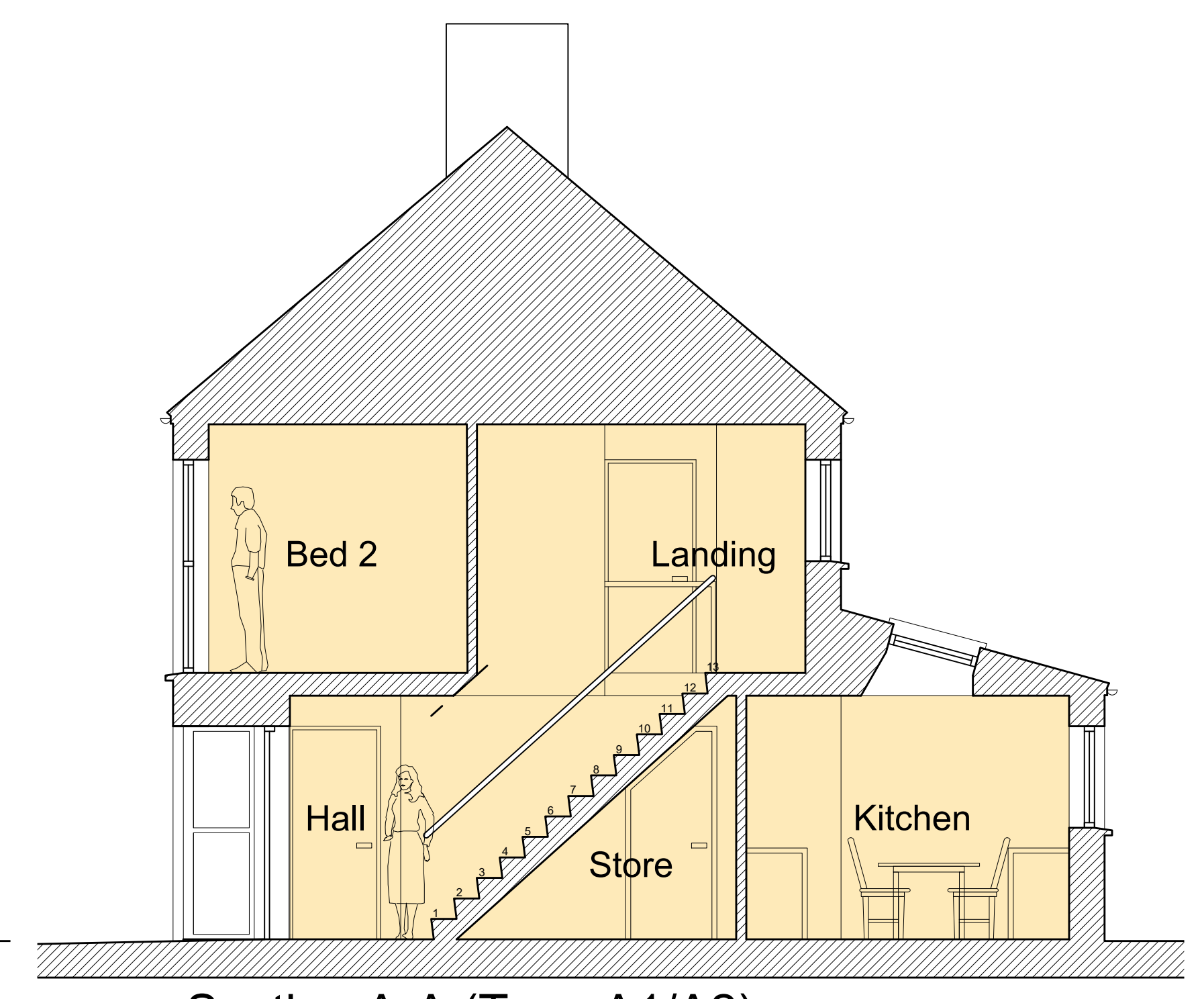
Front Elevation (Type A1/A2)



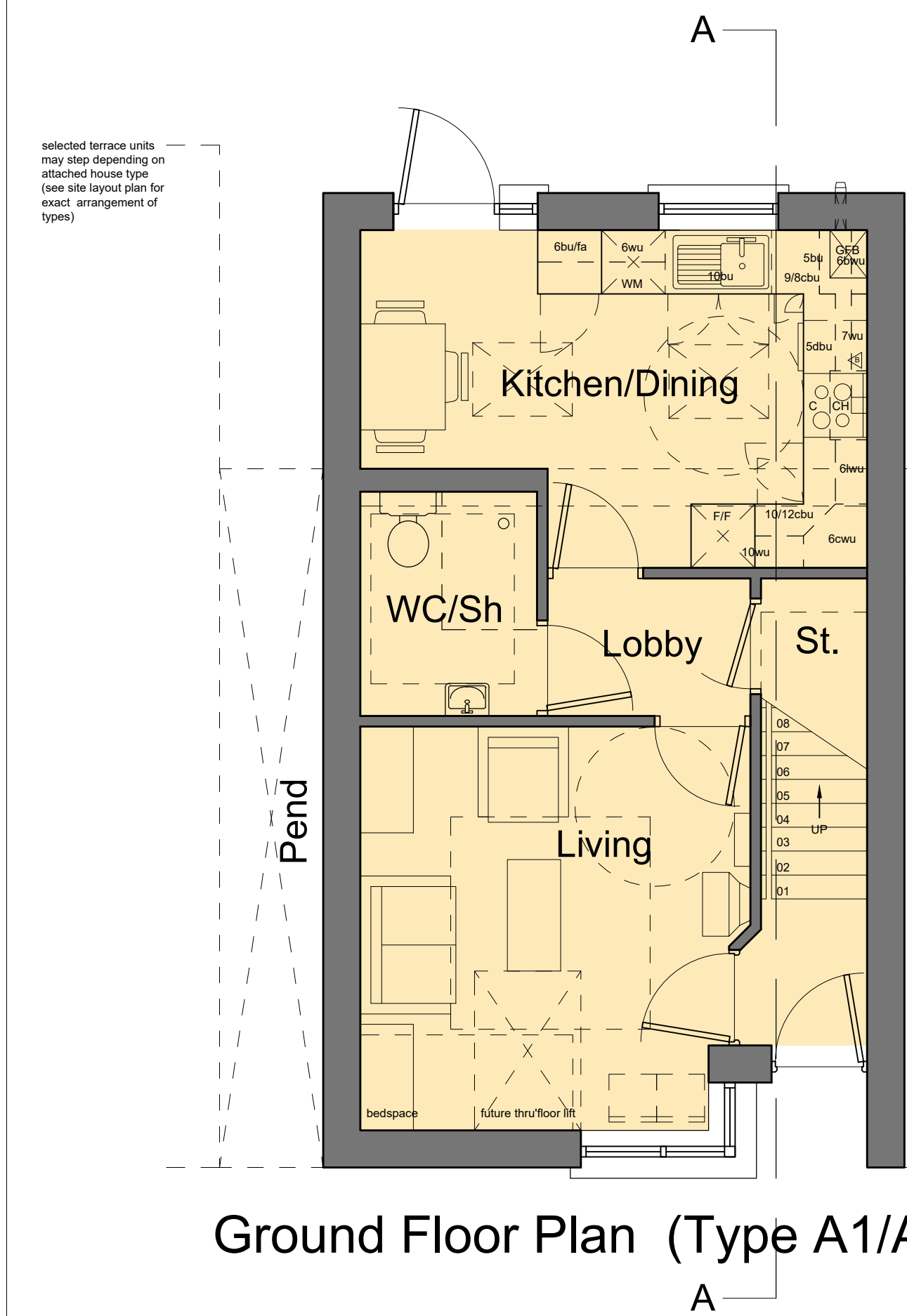
Rear Elevation (Type A1/A2)



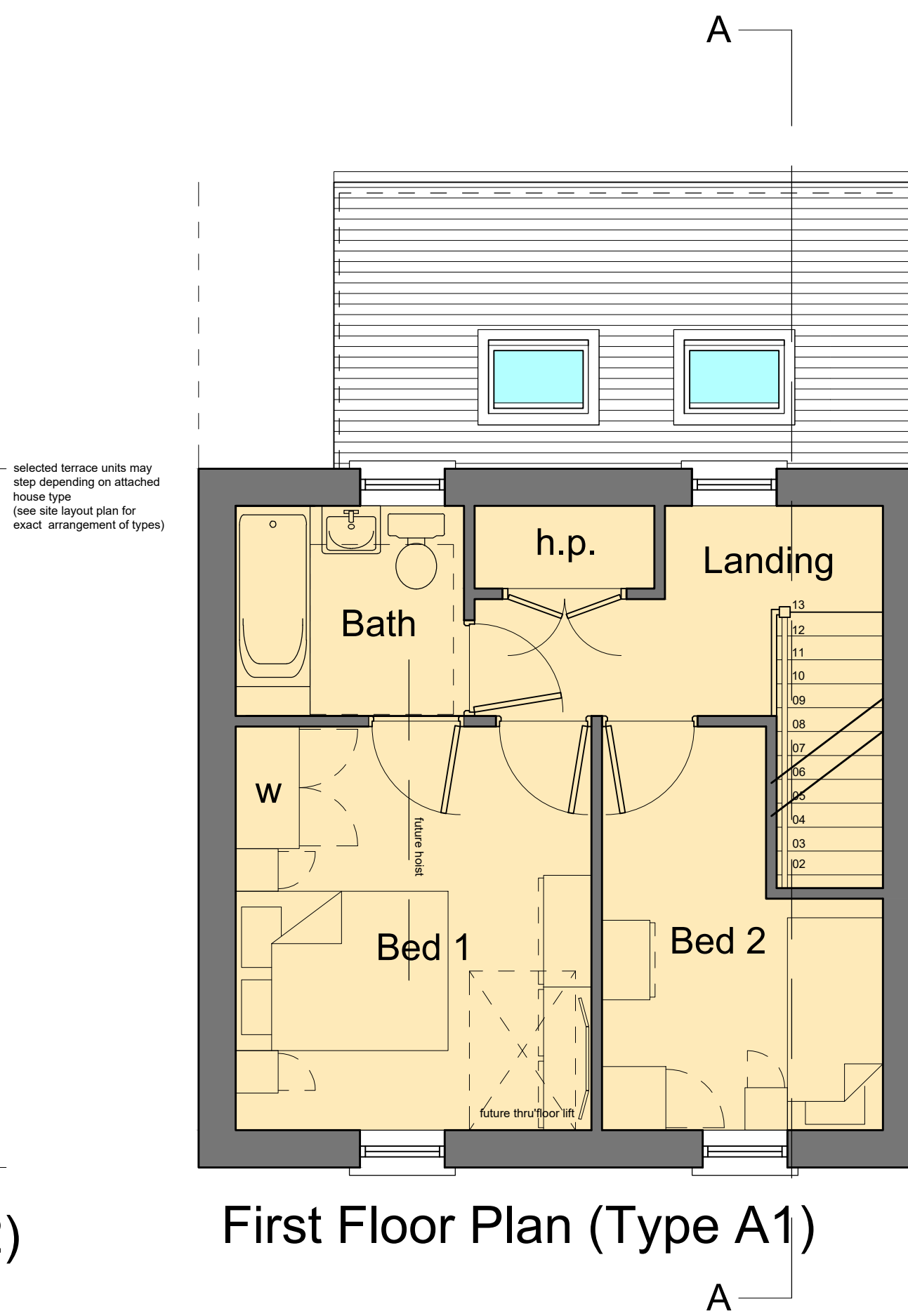
Gable Elevation (Type A2)



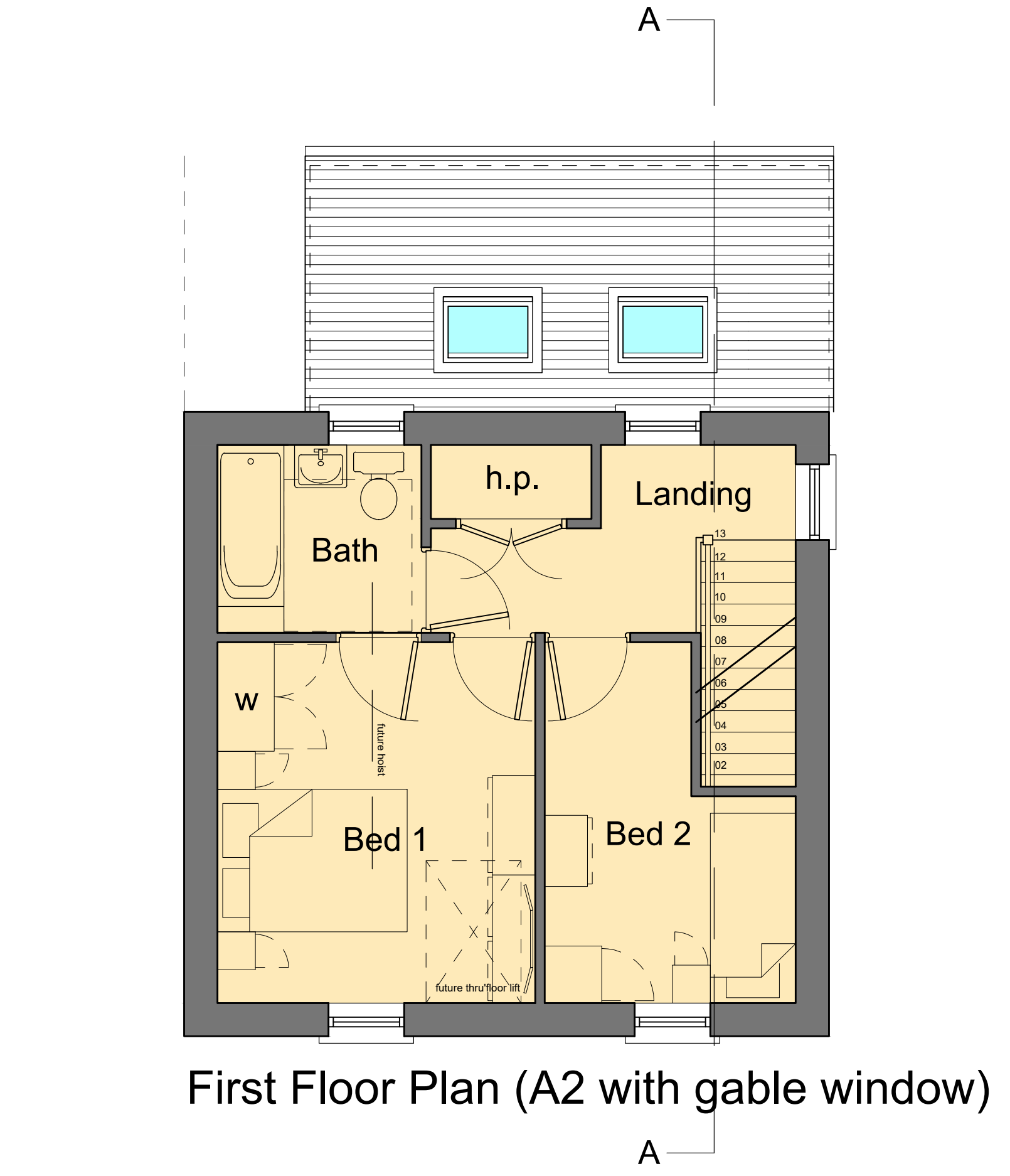
Section A-A (Type A1/A2)



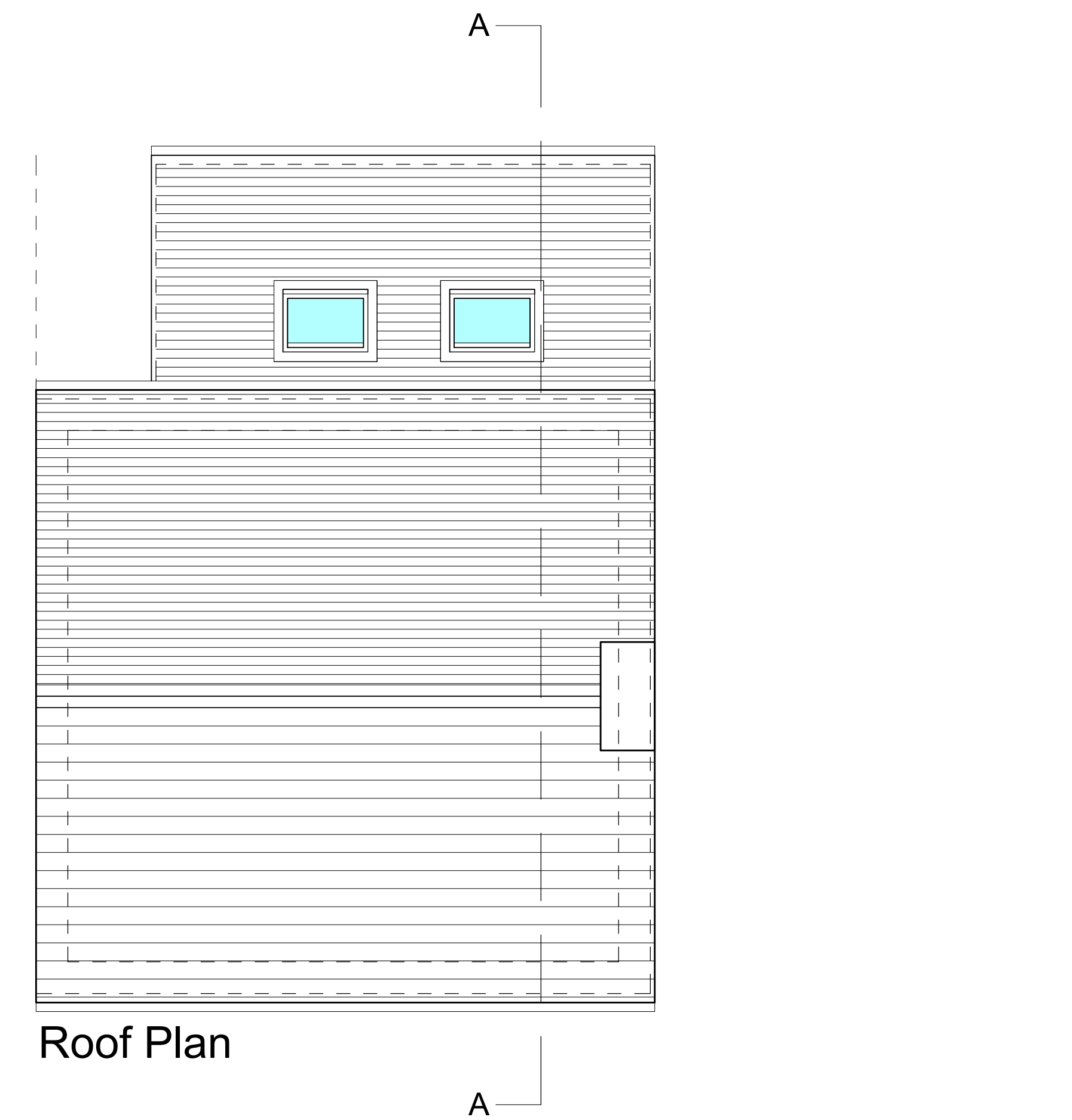
Ground Floor Plan (Type A1/A2)



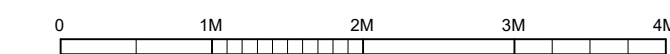
First Floor Plan (Type A1)



First Floor Plan (A2 with gable window)



Roof Plan



3P2B House Type A1 / A2

TOTAL FLOOR AREA: 75 M2

OUTLINE SPECIFICATION

- black ridge tiles
- blue black roof slates / tiles
- black cast aluminium rain water goods
- red clay facing bricks
- hardwood double glazed windows
- precast concrete cills
- hardwood double glazed doors/screens

C - General amendments	31 JUL 20 / JWC
B - Gable elevation indicated	16 JUN 19 / JMcC
A - General amendments	12 NOV 19 / JMcC

ROLSTON architects

49 Lisleen Road, Belfast, BT5 7SU . www.ROLSTONarchitects.com . info@ROLSTONarchitects.com . +44 (0) 28 9044 9814

PROPOSED NEW-BUILD RESIDENTIAL DEVELOPMENT ON EXISTING LAND AND PROPERTY.
 AT ALLOA STREET/MANOR ST, BELFAST, BT14 6EL.
 FOR CLANNIL DEVELOPMENTS LIMITED.
 PROJECT NUMBER: 19.941 SCALE: 1/100@A3 1/50@A1 16.AUG'19/JMcC.

house type A1 & A2 - plans and elevations

dwg.no. 19.941 SK.02C