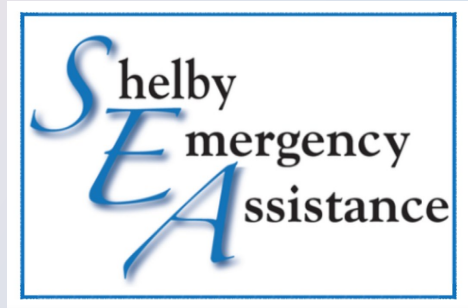


Shelby
Emergency
Assistance

Annual Report
2019



Shelby Emergency Assistance began in 1973 through the efforts of local individuals concerned about the needs of others in our community. These individuals, working as volunteers, developed the basic philosophy that guides our services today. In 1977 the agency became affiliated with United Way of Central Alabama, allowing us to expand our services to cover all of Shelby County.



C O N T E N T S

- 3 - Board of Directors
- 4 - Message from Executive Director
- 5 - Social Services
- 6 - Education Services
- 7 - Community Education
- 8 - STEP
- 9 - Agency Events
- 10 - Our Volunteers
- 11 - Our Supporters

Helping People Move From Crisis to Self-Sufficiency

BOARD OF DIRECTORS

2019



BOARD OFFICERS

President, Jim Hicks

Vice President, Amiee Mellon

Secretary, Charlene Robb Tucker

Treasurer, Herschel Hale

Immediate Past President, Tim Alexander

BOARD MEMBERS

Susan Lehman

Martha McMinn

Ervin Mickens

Adele Nelson

Tami Pickett

Jeffrey Purvis

Erica Roberts

JUNIOR BOARD MEMBERS

Rebecca Hill

Lizbeth Juareze

Rebekah Koen

Jason Perry

OUR VISION

To provide temporary emergency assistance to Shelby County residents who, due to a crisis, cannot meet their current basic needs. This is achieved by providing direct social services, utilizing and developing community resource referrals, training, and educational services.

MESSAGE FROM THE EXECUTIVE DIRECTOR

The year 2019 was a productive one for SEA, with new events and services that we were able to provide. We had our first Family Fun Day which was an opportunity to provide fun activities for parents and children, while also letting them see our new facility and meet our staff and board members. The Lion's Club Mobile Sight Unit was also available that day to provide vision exams. It was such a success that the Mobile Sight Unit began providing monthly visits to SEA to provide low-cost vision exams and glasses for our clients and the community. This has been an invaluable service helping people improve their vision and have more productive lives. For many it has meant being able to get a job and for others it has meant being able to help their children with school work.

Our Board of Directors were also very busy in organizing fundraisers and helping increase awareness of SEA's services, especially through social media. Their efforts resulted in our most successful year of fundraising. The Board also initiated the creation of the SEA Junior Board to assist with and support agency activities. These young members have demonstrated wonderful enthusiasm and creativity and we look forward to their continued participation.

It was a good year at SEA, but none of this would have been possible without the support of our community. We are so fortunate to have people who give of their time through volunteering and give of their resources through donations. SEA began through the efforts of community volunteers and donors and, still today, they remain vital to our continued operation and accomplishments.

Karen Pendleton



SEA STAFF

A FEW WORDS FROM OUR CLIENTS

"My Case Worker was very helpful and encouraging."

"This was a very positive experience in a stressful time."

"Thank you for your lovely attitudes, concern and understanding. Greatly, greatly, appreciated."

SOCIAL SERVICES

SEA's social services are provided by social service professionals who complete assessments, develop service plans, and provide assistance to stabilize the crisis situation. The case workers are knowledgeable of local resources and often collaborate with other agencies to better serve individuals and families in our community.

MAKING
AN
IMPACT

**1860 INDIVIDUALS ASSISTED THROUGH
OUR SOCIAL SERVICES DEPARTMENT**

697 NEEDS ASSESSMENTS

- Housing assistance provided for **67** individuals
- Home visits to provide services to **21** individuals
- Power assistance for **574** individuals
- Water assistance for **148** individuals
- Gas Heating assistance for **13** individuals
- Purchase of **125** prescriptions

**FOOD ASSISTANCE PROVIDED TO
1,370 INDIVIDUALS**

Food donations are received from churches, businesses, schools, and individuals. During summer months, produce is provided by the University of Montevallo Organic Garden, local Farmers Markets, and individuals.



Case Manager assisting a client.



Women's group from Church of the Highlands with food donations.

Education Services

EDUCATION MATTERS

In 2019 there were **816** individuals who received services from the Education Department. One of the services provided is budget management. The client attends a budget session and together a spending plan is developed. This may include ways to make better spending choices, tips for shopping more economically and debt reduction. The end result is a reasonable plan for the client to meet his/her household expenses.

Services include:

- ▶ **131** Budgeting Assistance
- ▶ **33** Job and resume search services
- ▶ **7** Pharmaceutical Assistance Applications
- ▶ **328** GED/ESL Services



Back to School Program

School supplies provided to **108** children. Churches, businesses, schools, and individuals collect school supplies for the students to start the year.

Project Christmas Program

Christmas gifts provided to **249** children. **71** sponsors provided children with three wishes and three needs. Also the community came together donating toys, socks, shoes, and clothing.



Pictured is the Alabaster Fire Department with gifts for the family they sponsored for Christmas.

Community Education

EDUCATION
CLASSES

CONTINUED
LEARNING

23 individuals participated in Community Education Classes.

SEA offers a variety of education and training services that are made available to clients and the general community. These services are directed toward learning new skills that will help individuals financially, vocationally, and emotionally. All that is required of participants is an interest and willingness to try new ideas.

Job Prep Classes provided by the Alabama Extension Service offers information on preparing resumes, interviewing techniques, and how to find employment.



Financial Literacy Classes provide information on a variety of topics including how to improve your credit score, how to recognize financial scams, and other topics focused on improving money management.

SEA also serves as host for other informational programs that are directed toward health and personal wellness.



S. T. E. P.

OPPORTUNITY
TO
GROW

SHELBY TEENS FOR
FOR EFFECTIVE
PARENTING



The goal is to promote healthy babies and moms, educate parenting teens to care for their children, support healthy lifestyle choices while encouraging school attendance and graduation.



Shelby Teens for Effective Parenting, STEP, is available to pregnant or parenting teens (ages 12-19) who are residents of Shelby County. STEP meets on a bi-weekly basis at Shelby County Schools and the classes are designed to directly impact the physical and emotional well being of teen parents. Lessons include prenatal and parenting topics.



- **16** teens participated in STEP
- **94%** of the teens maintained school enrollment
- Of **7** births to teens, all were healthy babies

AGENCY EVENTS



FAMILY FUN DAY

SEA's first Family Fun Day was a great success with plenty of fun activities for kids and useful information for parents. Kids learned how to Hula Hoop, had their face painted, and made fun crafts. Meanwhile, parents learned about Head Start, Smoke Alarms and SEA's services. SEA Board members also provided lunch for all.



MARDI GRAS

Everyone looks forward to SEA's Mardi Gras event, with its great Cajun food, fun music and silent auction. Jim Quakenbush and his trumpet had everyone in the party mood. There were lots of items for bidding in the silent auction, and even a little friendly competition. It was a great time for friends to get together for a good cause.



HOLIDAY BREAKFAST

Our Pancake Breakfast was a opportunity for us to enjoy the Holiday season with our volunteers and supporters. In addition to a hearty breakfast, we had musical entertainment provided by the Boys & Girls Club and plenty of door prizes. We were all winners that day.

OUR VOLUNTEERS

SEA started with a few volunteers who came together to help people in need. Since that time, volunteers have been a vital part of SEA's day-to-day operation, helping with a variety of services. Our volunteers come with differing backgrounds and experience, but they all have one thing in common – a desire to help others. SEA is grateful for these volunteers and their giving hearts.

*Volunteering is
a work of heart*



63 Volunteers provided over **1,133** hours of service.



(Above left) Church of the Highlands group cutting trees, (middle) University of Montevallo student volunteers, (right) University of Montevallo Minority Student Union.

OUR SUPPORTERS

<i>A. C. Legg</i>	<i>Montevallo First United Methodist Church</i>
<i>Alacare Home Health & Hospice</i>	<i>Montevallo Main Street Players</i>
<i>AmStar Cinema</i>	<i>Montevallo Middle School Leaders of Tomorrow</i>
<i>Anglican Church of the Holy Comforter</i>	<i>Montevallo Presbyterian Church</i>
<i>Asbury United Methodist Church</i>	<i>Montevallo Study Club</i>
<i>Beta Mu Nu Chapter of Omega Psi Phi Fraternity</i>	<i>Oak Mountain Ministries</i>
<i>Bradford Real Estate</i>	<i>Pelham Church of God</i>
<i>Cahaba Timber</i>	<i>Pic 'n Save, Montevallo</i>
<i>Calera High School</i>	<i>Publix, Alabama</i>
<i>Central Alabama Community College</i>	<i>RealtySouth</i>
<i>Christ Central Church</i>	<i>Regions Bank, Montevallo</i>
<i>Church of the Highlands</i>	<i>Riverchase United Methodist Church</i>
<i>City of Montevallo</i>	<i>Shelby Baptist Association</i>
<i>Community Foundation of Greater Birmingham</i>	<i>Shelby County Commission</i>
<i>Community of Hope</i>	<i>Shelby County Community Health Foundation</i>
<i>Crosscreek Baptist Church</i>	<i>Seaman Foundation</i>
<i>Mr. Walter Cunningham</i>	<i>Shiloh Baptist Church</i>
<i>Mr. Walt Czeskleba</i>	<i>Signature Homes</i>
<i>Ebenezer United Methodist Church</i>	<i>Smitherman's Pharmacy</i>
<i>First Presbyterian Church of Alabaster</i>	<i>Southside Baptist Church</i>
<i>Helena First United Methodist Church</i>	<i>Specification Rubber</i>
<i>Dr. and Mrs. Gary Howard</i>	<i>Spring Creek Cumberland Presbyterian Church</i>
<i>Kappa Chi Chapter of Phi Mu Sorority at UM</i>	<i>St. Andrews Episcopal Church</i>
<i>Lambda Chi Alpha Fraternity</i>	<i>St. Thomas Catholic Church</i>
<i>Lucky's Foodland, Montevallo</i>	<i>State Farm Insurance/Bob Butterworth</i>
<i>MacLean Power System</i>	<i>Trustmark Bank</i>
<i>Mahan Creek Dental</i>	<i>University Baptist Church</i>
<i>Montevallo Chamber of Commerce</i>	<i>University of Montevallo</i>
<i>Montevallo First Baptist Church</i>	<i>Barry and Dee Woodham</i>

and many more!

FINANCIALS

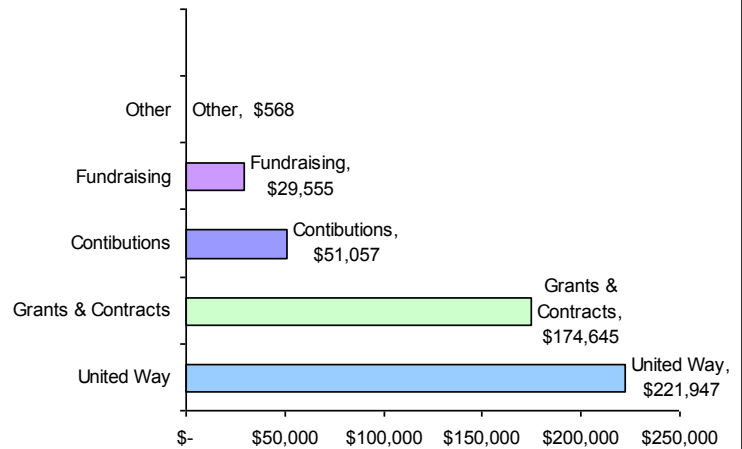
CLIENTS SERVED

Alabaster	269
Calera	228
Chelsea	30
Columbiana	165
Harpersville	17
Helena	74
Indian Springs	2
Leeds	5
Maylene	87
Montevallo	819
North Shelby	180
Pelham	118
Shelby	27
Sterrett	15
Vandiver	3
Vincent	18
Westover	3
Wilsonville	49
Wilton	26
Out of County	31
Total	2,166

FUNDING

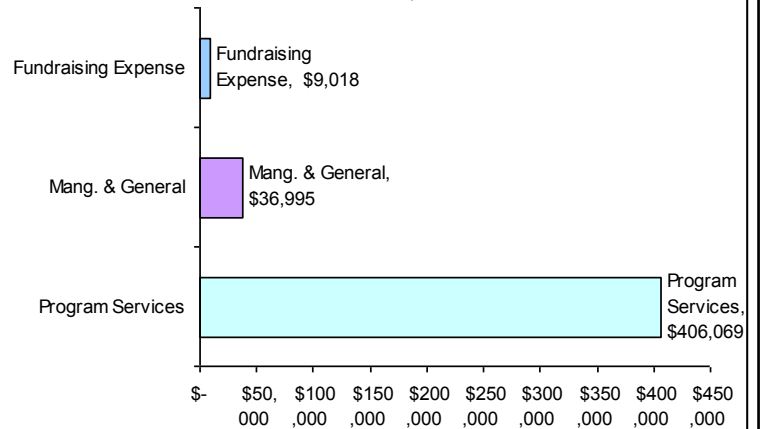
Funding Sources for 2019

Total \$477,772



Expenditures for 2019

Total \$452,082



Shelby Emergency Assistance is a
United Way Partner Agency



Shelby Emergency Assistance

P. O. Box 18

160 Shoshone Drive
Montevallo, AL 35115

Phone: 205-665-1942

Fax: 205-665-7855

E-mail: office@shelbyemergencyassistance.com
www.shelbyemergencyassistance.com