

# Budget Inn

1520 Tamiami Trail, Punta Gorda Florida 33950

**\$4Million (Seller Financing Available)**

Asset Sale, No Financials



Presented by

**Steve D. Smith | Principle**

Florida Real Estate License: 3316359

**Steve D Smith**  **LLC**  
Licensed Real Estate Broker

(941) 400-6118

[steve@stevedsmith360.com](mailto:steve@stevedsmith360.com)

[www.SteveDSmith360.com](http://www.SteveDSmith360.com)

**Steve D Smith 360 LLC**

662 South Tamiami Trail  
Osprey Florida 34229

# 1520 Tamiami Trl, Punta Gorda, FL 33950

## Property Facts

Property Type	Hotel/Motel
Property Subtype	Hotel/Motel
Number of Buildings	3
Number of Units	50
Building Area (sq ft)	24,468
Lot Size	1.51 acres
Lot Dimensions	1.511 AC
Year Built	1958
Pool	Yes

## Public Facts

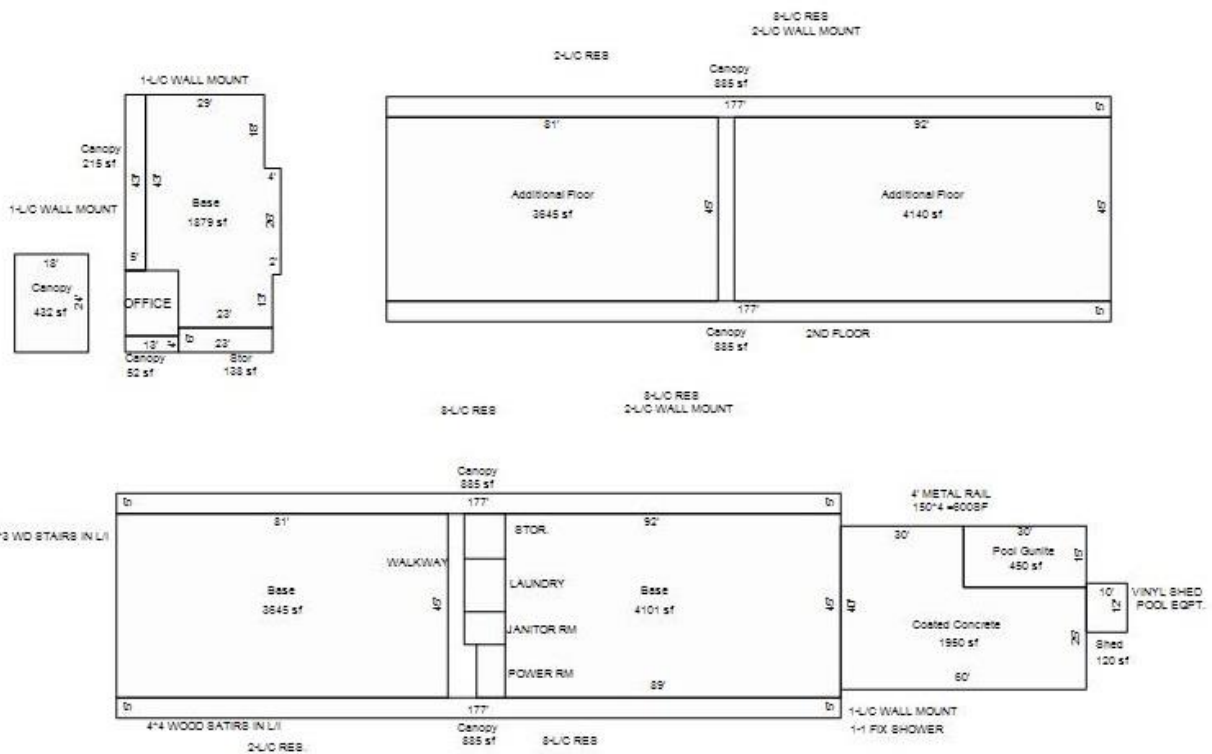
## Extended Property Facts

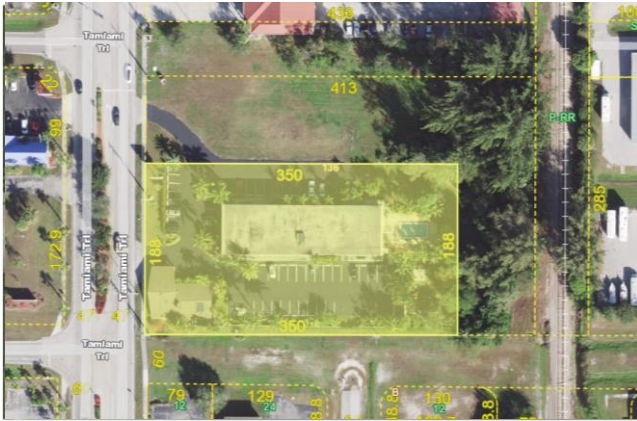
### Exterior Details

Lot Size - Square Feet	65800 sq ft
Lot Size - Acres	1.511 ac
Neighborhood Code	80
Water	Yes
Sewer	Yes

### Other Details

Amenities	Automatic Sprinkler System
Pool Size	450
Wood Deck	28
Fence	600
Asphalt paving	26940
Concrete paving	1470
Pavers	831





Tenant Data – Total Tenants Found: 1

Tenant / Contact	Suite/ Unit	Move-in Date	Type of Business	Business Start Date
<b>BUDGET INN</b>			Hotel/Motel Chain	

Public Facts

Owner Information

Owner Name	CONFIDENTIAL
Mailing Address	1520 Tamiami Trl Punta Gorda FL 33950-5910

Legal Description

APN: 41-23-07-259-002	Tax ID:	Zoning: CG	Census Tract: 120150103.023021	Abbreviated Description: LOT:ALL SEC/TWN/RNG/MER:SEC 07 TWN 41S RNG 23E PUG 000 0136 0000 PUNTA GORDA A PORT OF BLK 136 DESC AS BEG AT INTXN OF SW COR BLK 136 & E ROW US41 TH N ALG ROW 188.54 FT E MAP REF:MAP 5B07N	City/Municipality/Township: Punta Gorda, FL 33950
--------------------------	---------	---------------	-----------------------------------	---	--

Assessed Values

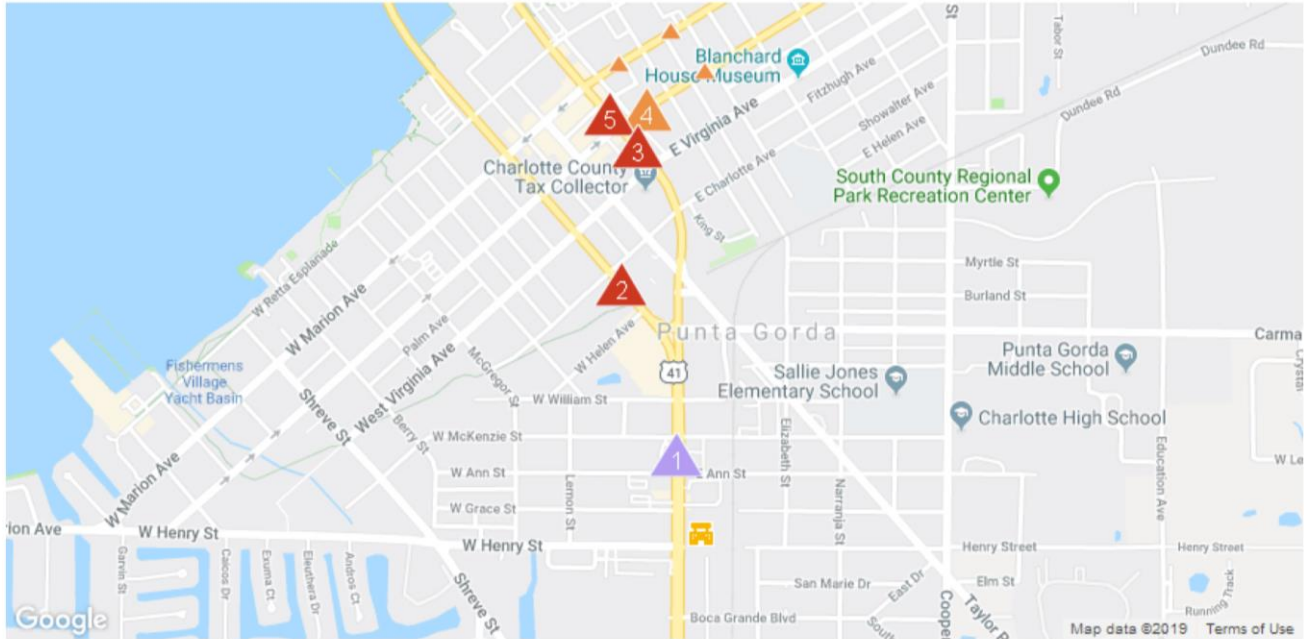
Date	Improvements	Land	Total	Tax
2018	-	-	\$1,072,060	\$16,710
2017	-	-	\$965,160	\$15,399
2016	-	-	\$959,149	\$15,625
2015	-	-	\$888,014	\$14,675
2014	-	-	\$991,534	\$16,631
2013	-	-	\$903,895	\$16,926
2012	-	-	\$1,018,167	\$15,258
2011	-	-	\$1,054,346	\$16,644



## Historical Photos



# Traffic Counts



Daily Traffic Counts    ▲ Up 6,000 / day    ▲ 6,001 – 15,000    ▲ 15,001 – 30,000    ▲ 30,001 – 50,000    ▲ 50,001 – 100,000    ▲ Over 100,000 / day

**1**

**34,031**

2017 Est. daily traffic counts

---

Street: Tamiami Trl  
Cross: W McKenzie St  
Cross Dir: N  
Dist: 0.03 miles

Historical counts

Year	Count	Type
2005	33,000	AA DT
2001	28,500	AA DT
1997	28,000	AA DT

**2**

**18,463**

2017 Est. daily traffic counts

---

Street: Cross St  
Cross: W Charlotte Ave  
Cross Dir: NW  
Dist: 0.03 miles

Historical counts

Year	Count	Type
2001	18,000	AA DT
1997	17,500	AA DT

**3**

**16,228**

2017 Est. daily traffic counts

---

Street: Tamiami Trl  
Cross: E Virginia Ave  
Cross Dir: SE  
Dist: 0.04 miles

Historical counts

Year	Count	Type
2001	17,500	AA DT
1999	16,500	AA DT
1997	16,500	AA DT

**4**

**12,617**

2017 Est. daily traffic counts

---

Street: E Olympia Ave  
Cross: Nesbit St  
Cross Dir: NE  
Dist: 0.05 miles

Historical counts

Year	Count	Type
2005	13,000	AA DT
2001	13,500	AA DT
1999	13,500	AA DT
1997	13,000	AA DT

**5**

**20,000**

2005 Est. daily traffic counts

---

Street: Tamiami Trl  
Cross: Herald Ct  
Cross Dir: NW  
Dist: 0.02 miles

Historical counts

Year	Count	Type
------	-------	------

NOTE: Daily Traffic Counts are a mixture of actual and Estimates (\*)

Criteria Used for Analysis

Income:  
**Median Household Income**  
**\$53,374**

Age:  
**Median Age**  
**66.0**

Population Stats:  
**Total Population**  
**25,257**

Segmentation:  
**1st Dominant Segment**  
**Silver and Gold**

Consumer Segmentation

Life Mode

What are the people like that live in this area?

**Senior Styles**  
Senior lifestyles reveal the effects of saving for retirement

Urbanization

Where do people like this usually live?

**Suburban Periphery**  
Affluence in the suburbs, married couple-families, longer commutes

Top Tapestry Segments

	Silver and Gold	Senior Escapes	The Elders	Hardscrabble Road
% of Households	5,826 (46.4%)	3,526 (28.1%)	2,282 (18.2%)	913 (7.3%)
% of Charlotte County	17,488 (21.4%)	22,274 (27.3%)	11,125 (13.6%)	913 (1.1%)
Lifestyle Group	Senior Styles	Senior Styles	Senior Styles	Middle Ground
Urbanization Group	Suburban Periphery	Semirural	Suburban Periphery	Metro Cities
Residence Type	Single Family or Seasonal	Single Family, Mobile Homes or Seasonal	Single Family, High-Rise, Mobile Homes or Seasonal	Single Family
Household Type	Married Couples Without Kids	Married Couples Without Kids	Married Couples Without Kids	Singles
Average Household Size	2.02	2.19	1.67	2.64
Median Age	61.8	52.6	71.8	31.7
Diversity Index	22.4	42.5	20.3	74.2
Median Household Income	\$63,000	\$35,000	\$35,000	\$26,000
Median Net Worth	\$294,000	\$84,000	\$194,000	\$12,000
Median Home Value	\$289,000	\$110,000	\$153,000	—
Homeownership	83.8 %	76.1 %	82.1 %	41.2 %
Average Monthly Rent	—	—	—	\$690
Employment	Retired, Professional or Services	Retired, Services, Professional or Administration	Retired, Services, Professional or Administration	Services or Administration
Education	College Degree	High School Graduate	College Degree	High School Graduate
Preferred Activities	Play golf; go boating. Exercise regularly.	Take guided tours in the U.S.. Belong to veterans' clubs, member of AARP/AAA.	Buy clothing, exercise equipment. Shop by phone or in person.	Play basketball, football, volleyball. Shop via sales rep, QVC or HSN.
Financial	Draw retirement income	Bank in person	Bank in person	Invest in retirement savings, stocks, bonds
Media	Read newspapers, magazines, books	Watch news, sports, CMT, Golf Channel, AMC on TV	Watch news, movies, golf, travel, history on TV	Listen to gospel, rap, hip-hop and R&B music
Vehicle	Prefer luxury cars, SUVs, convertibles	Maintain older vehicle	Drive luxury sedans aged 5+ years	Own 1-2 vehicles

## Punta Gorda, FL 33950: Population Comparison

### Total Population

This chart shows the total population in an area, compared with other geographies.

Data Source: U.S. Census American Community Survey via Esri, 2018

Update Frequency: Annually

■ 2018  
 ■ 2023 (Projected)



### Population Density

This chart shows the number of people per square mile in an area, compared with other geographies.

Data Source: U.S. Census American Community Survey via Esri, 2018

Update Frequency: Annually

■ 2018  
 ■ 2023 (Projected)



### Population Change Since 2010

This chart shows the percentage change in area's population from 2010 to 2018, compared with other geographies.

Data Source: U.S. Census American Community Survey via Esri, 2018

Update Frequency: Annually

■ 2018  
 ■ 2023 (Projected)



### Total Daytime Population

This chart shows the number of people who are present in an area during normal business hours, including workers, and compares that population to other geographies. Daytime population is in contrast to the "resident" population present during evening and nighttime hours.

Data Source: U.S. Census American Community Survey via Esri, 2018

Update Frequency: Annually

■ 33950





### Daytime Population Density

This chart shows the number people who are present in an area during normal business hours, including workers, per square mile in an area, compared with other geographies. Daytime population is in contrast to the "resident" population present during evening and nighttime hours.

Data Source: U.S. Census American Community Survey via Esri, 2018  
 Update Frequency: Annually



■ 33950

### Average Household Size

This chart shows the average household size in an area, compared with other geographies.

Data Source: U.S. Census American Community Survey via Esri, 2018  
 Update Frequency: Annually



■ 2018  
 ■ 2023 (Projected)

### Population Living in Family Households

This chart shows the percentage of an area's population that lives in a household with one or more individuals related by birth, marriage or adoption, compared with other geographies.

Data Source: U.S. Census American Community Survey via Esri, 2018  
 Update Frequency: Annually

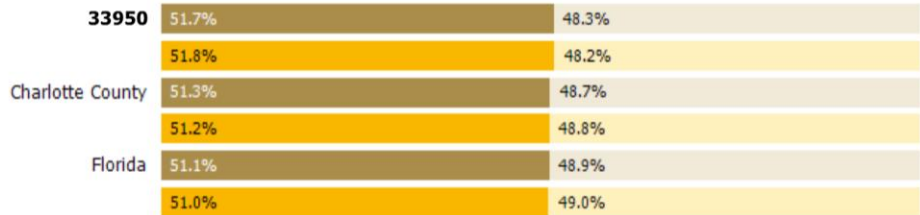


■ 2018  
 ■ 2023 (Projected)

### Female / Male Ratio

This chart shows the ratio of females to males in an area, compared with other geographies.

Data Source: U.S. Census American Community Survey via Esri, 2018  
 Update Frequency: Annually



■ Women 2018  
 ■ Men 2018  
 ■ Women 2023 (Projected)  
 ■ Men 2023 (Projected)

## Punta Gorda, FL 33950: Marital Status Comparison

### Married / Unmarried Adults Ratio

This chart shows the ratio of married to unmarried adults in an area, compared with other geographies.

Data Source: U.S. Census American Community Survey via Esri, 2018

Update Frequency: Annually



### Married

This chart shows the number of people in an area who are married, compared with other geographies.

Data Source: U.S. Census American Community Survey via Esri, 2018

Update Frequency: Annually



### Never Married

This chart shows the number of people in an area who have never been married, compared with other geographies.

Data Source: U.S. Census American Community Survey via Esri, 2018

Update Frequency: Annually



### Widowed

This chart shows the number of people in an area who are widowed, compared with other geographies.

Data Source: U.S. Census American Community Survey via Esri, 2018

Update Frequency: Annually



### Divorced

This chart shows the number of people in an area who are divorced, compared with other geographies.

Data Source: U.S. Census American Community Survey via Esri, 2018

Update Frequency: Annually



## Punta Gorda, FL 33950: Economic Comparison

### Average Household Income

This chart shows the average household income in an area, compared with other geographies.

Data Source: U.S. Census American Community Survey via Esri, 2018

Update Frequency: Annually

■ 2018  
 ■ 2023 (Projected)



### Median Household Income

This chart shows the median household income in an area, compared with other geographies.

Data Source: U.S. Census American Community Survey via Esri, 2018

Update Frequency: Annually

■ 2018  
 ■ 2023 (Projected)



### Per Capita Income

This chart shows per capita income in an area, compared with other geographies.

Data Source: U.S. Census American Community Survey via Esri, 2018

Update Frequency: Annually

■ 2018  
 ■ 2023 (Projected)



### Average Disposable Income

This chart shows the average disposable income in an area, compared with other geographies.

Data Source: U.S. Census American Community Survey via Esri, 2018

Update Frequency: Annually



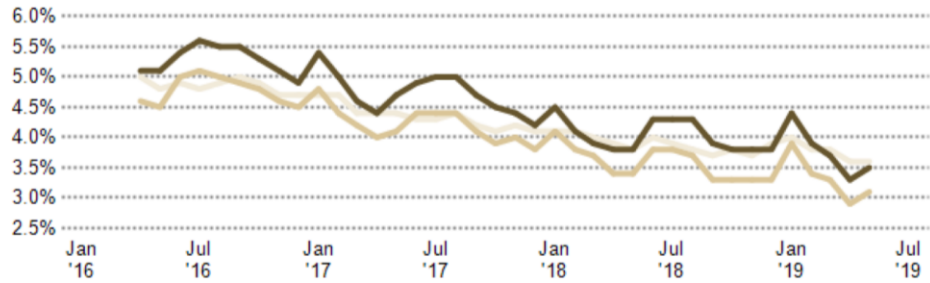
**Unemployment Rate**

This chart shows the unemployment trend in an area, compared with other geographies.

Data Source: Bureau of Labor Statistics via 3DL

Update Frequency: Monthly

- Charlotte County
- Florida
- USA



**Employment Count by Industry**

This chart shows industries in an area and the number of people employed in each category.

Data Source: Bureau of Labor Statistics via Esri, 2018

Update Frequency: Annually



## Punta Gorda, FL 33950: Commute Comparison

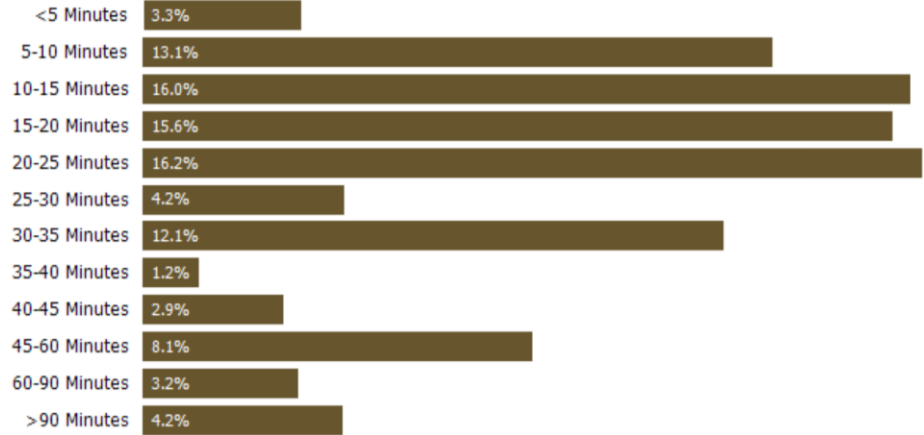
### Average Commute Time

This chart shows average commute times to work, in minutes, by percentage of an area's population.

Data Source: U.S. Census American Community Survey via Esri, 2018

Update Frequency: Annually

■ 33950



### How People Get to Work

This chart shows the types of transportation that residents of the area you searched use for their commute, by percentage of an area's population.

Data Source: U.S. Census American Community Survey via Esri, 2018

Update Frequency: Annually

■ 33950



## Punta Gorda, FL 33950: Home Value Comparison

### Median Estimated Home Value

This chart displays property estimates for an area and a subject property, where one has been selected. Estimated home values are generated by a valuation model and are not formal appraisals.

Data Source: Valuation calculations based on public records and MLS sources where licensed

Update Frequency: Monthly



### 12-Month Change in Median Estimated Home Value

This chart shows the 12-month change in the estimated value of all homes in this area, the county and the state. Estimated home values are generated by a valuation model and are not formal appraisals.

Data Source: Valuation calculations based on public records and MLS sources where licensed

Update Frequency: Monthly



### Median Listing Price

This chart displays the median listing price for homes in this area, the county and the state.

Data Source: On- and off-market listings sources

Update Frequency: Monthly

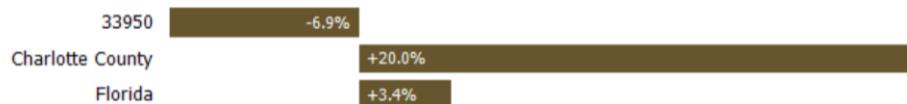


### 12-Month Change in Median Listing Price

This chart displays the 12-month change in the median listing price of homes in this area, and compares it to the county and state.

Data Source: On- and off-market listings sources

Update Frequency: Monthly



Best Retail Businesses: Punta Gorda, FL 33950

This chart shows the types of businesses that consumers are leaving an area to find. The business types represented by blue bars are relatively scarce in the area, so consumers go elsewhere to have their needs met. The beige business types are relatively plentiful in the area, meaning there are existing competitors for the dollars that consumers spend in these categories.

Data Source: Retail Marketplace via Esri, 2018

Update Frequency: Annually

