



BILLINGSHEIGHTS
NEIGHBORHOOD PLAN

OPEN HOUSE

**SEPTEMBER 25, 2024
5 TO 7 P.M.**

Join us to learn more about the Billings Heights
Neighborhood Plan and help shape the future
of the Heights!



INTRODUCTION

START
HERE

- 1 Sign in to let us know you were here!
- 2 Anyone with a lanyard name tag is with the project team—ask us questions!
- 3 Display boards with the 💡 icon include prompts to help inspire comments, suggestions, and ideas. Use the designated post-it notes, markers, and stickers to share your share your thoughts on the Idea Boards and map print-outs around the room.
- 4 Scan the QR code at the bottom of this board to visit the website, where you can complete the Engagement Survey, comment on the Interactive Map, and more!



PROJECT OVERVIEW & GOALS

PROJECT OVERVIEW

The City of Billings, Yellowstone County, and the Billings-Yellowstone County Metropolitan Planning Organization (MPO) are updating the 2006 Billings Heights Neighborhood Plan to help guide continued development of the Heights over the next 20 years.

The purpose of this open house is to give you an opportunity to help create a vision for the future of your neighborhood.

PROJECT TEAM*



*The project team also includes a Steering Committee of community leaders and Heights residents to help guide the planning process and promote public engagement. A full list of committee members can be found on the project website.

FOCUS AREAS

We'll be looking at the current status and anticipated trends for:



Land Use & Development



Community & Public Facilities



Transportation & Connectivity

WHY IS THIS NEIGHBORHOOD PLAN IMPORTANT?

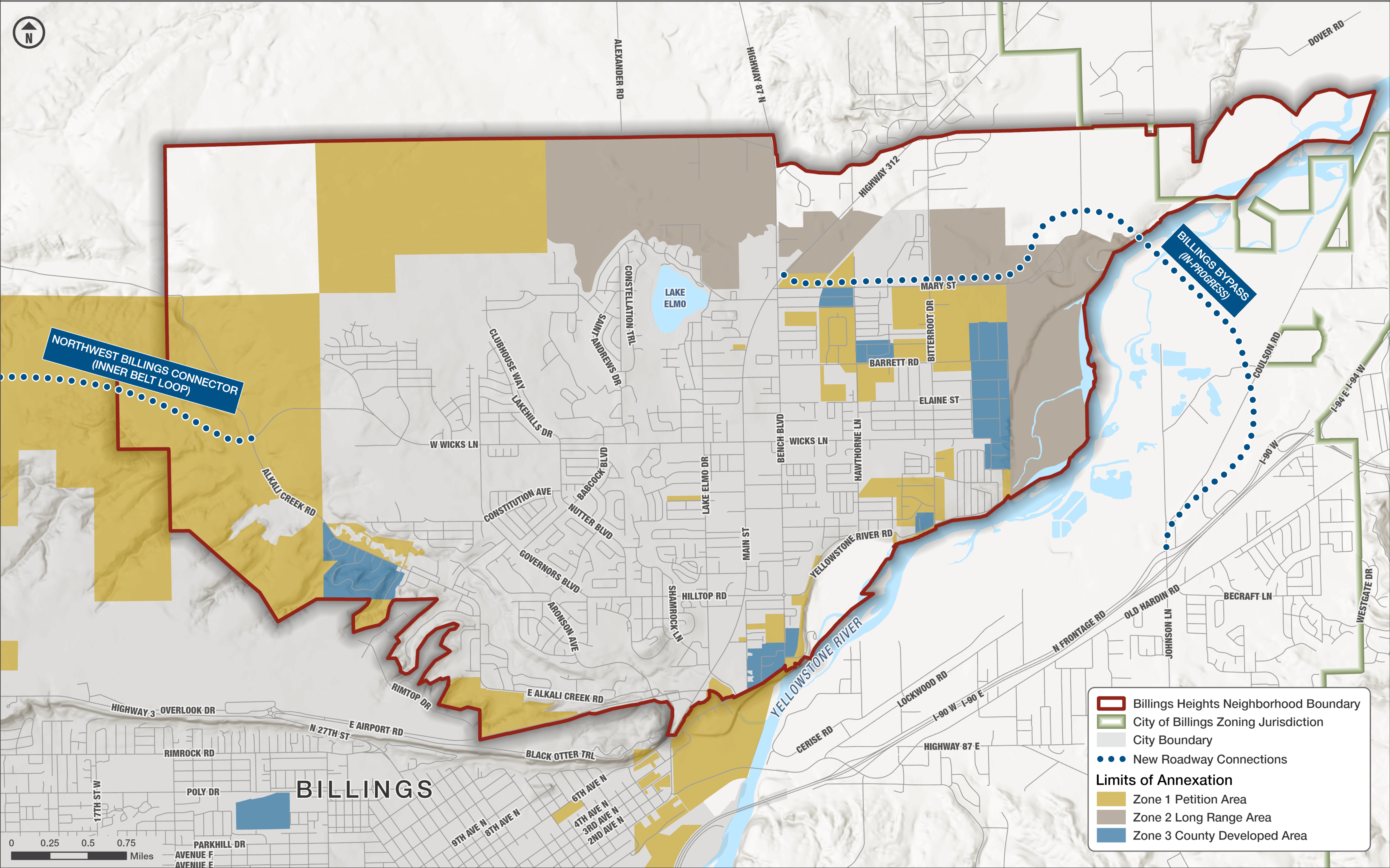
-  As the Billings Heights continues to grow, it's important to have a roadmap for future land use and transportation planning that incorporates technical data/analysis, public participation, and practical implementation strategies.
-  The updated plan will serve as a tool for making informed decisions about the future of the Billings Heights that reflects community needs.
-  It will also update the neighborhood's Future Land Use Map. Per the new Montana Land Use Planning Act, this will help inform the city-wide Growth Policy and Projected Land Use Map to help guide future zoning and development considerations.



What is your vision for the Billings Heights over the next 20 years?



BOUNDARY FOR NEIGHBORHOOD PLAN UPDATE



WHAT'S NEW SINCE 2006?



Population growth (the Heights now houses about 1/3 of Billings' total population).



“Project Re:Code” established new zoning requirements with the purpose of adapting to current needs, encouraging development, and preserving neighborhoods.



Transportation system developments

- Bench Boulevard
- Skyway Drive
- Billings Bypass (in-progress)



New school, parks, neighborhoods

- Medicine Crow Middle School
- High Sierra Dog Park, Dover Park, etc.
- Oasis Water Park
- New health care facilities



Skyway Drive



High Sierra Dog Park



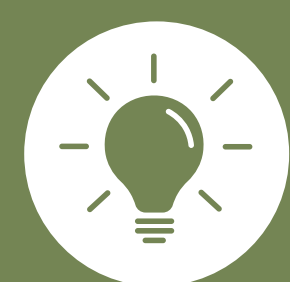
Yellowstone River bridge via Billings Bypass



Oasis Water Park



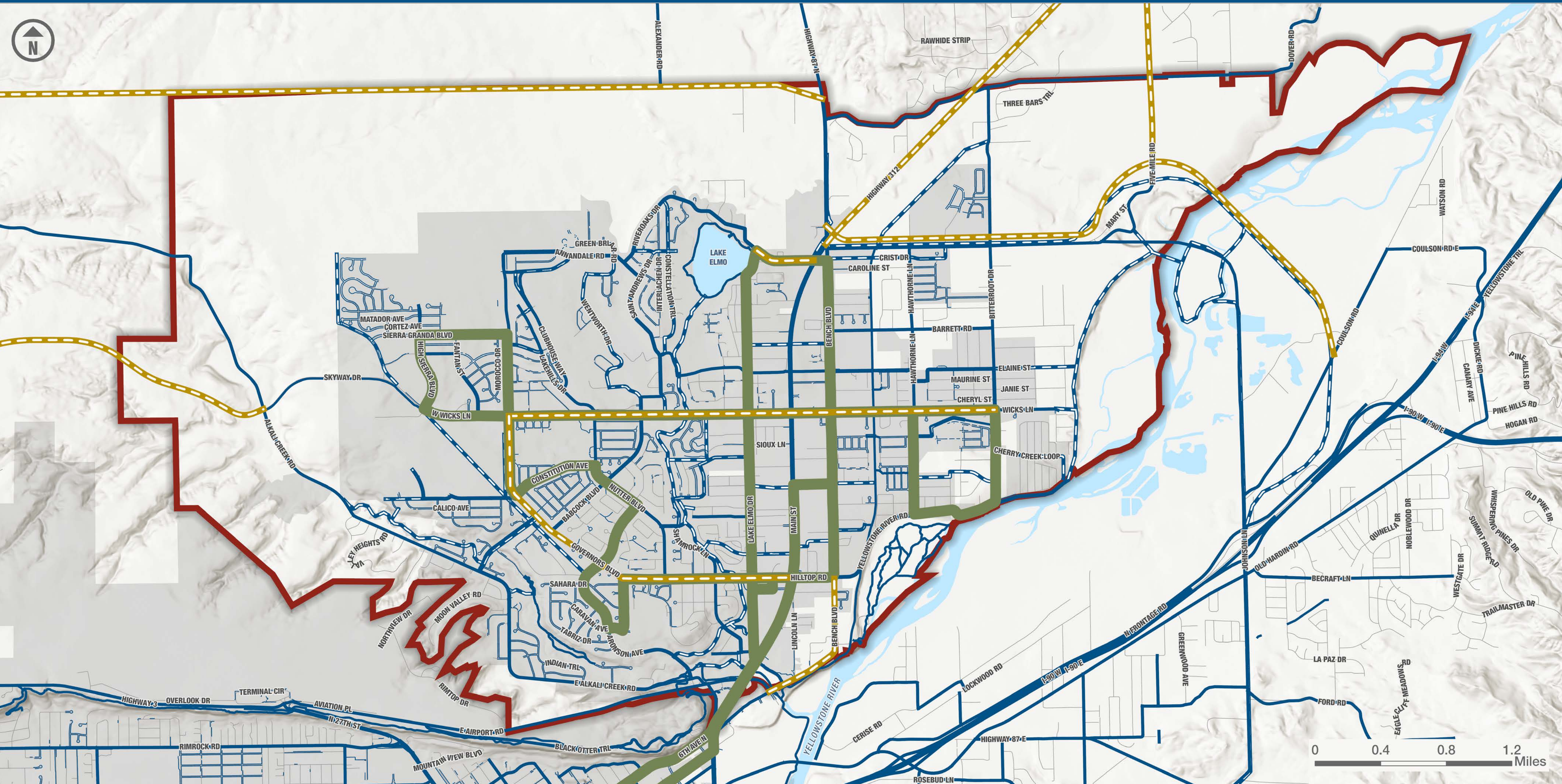
Heights Clinic Family Medicine



What other improvements have you seen in the Heights since 2006? What has stayed the same?



TRANSPORTATION & CONNECTIVITY



Billings Heights Neighborhood Boundary

City Boundary

Transportation Route

Planned Road Project (new construction or improvements)

Proposed Bike/ Pedestrian Route

Existing Bike/ Pedestrian Route

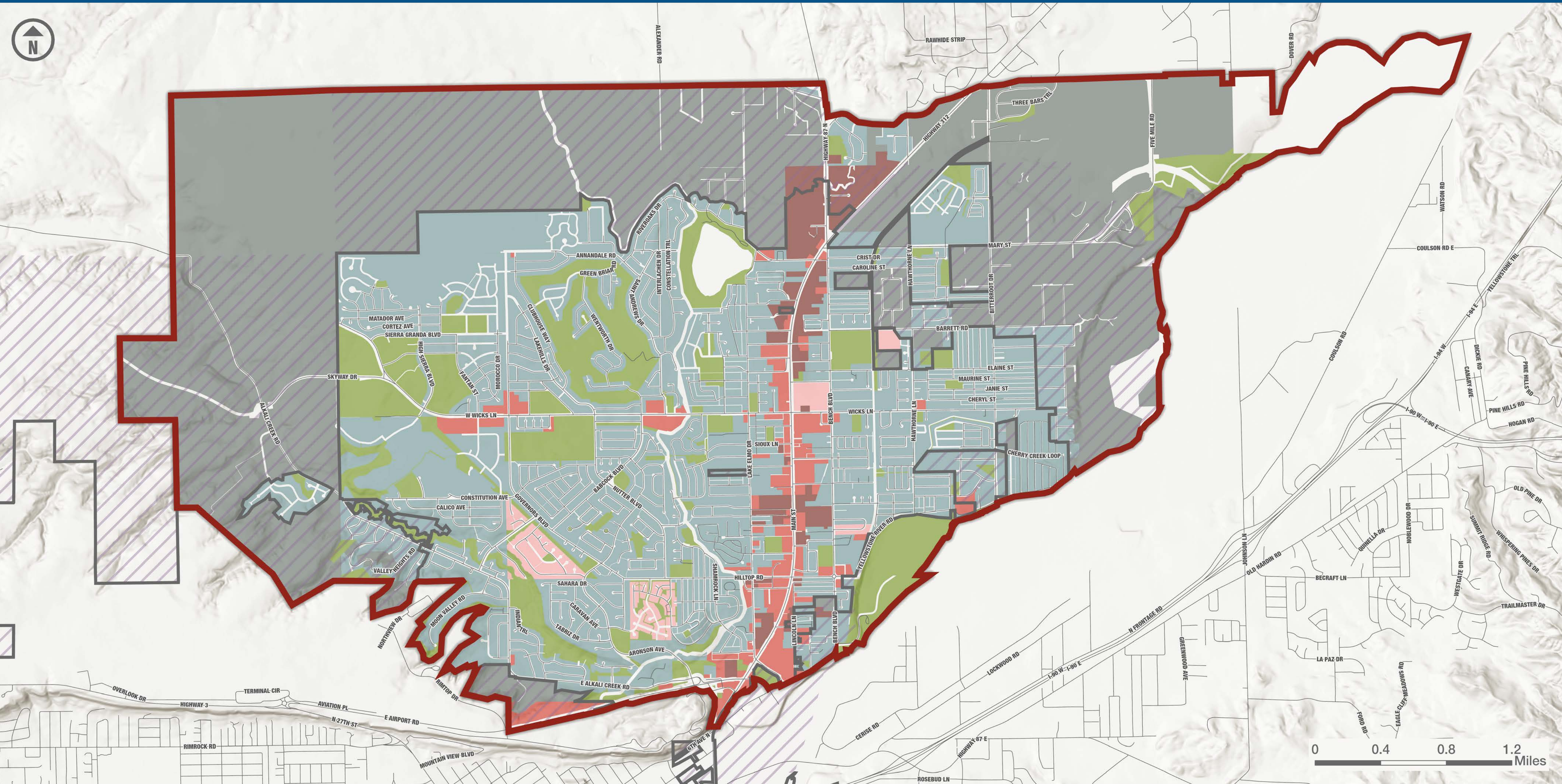
Existing Transit Route



What are the biggest transportation issues impacting the Heights?



CURRENT LAND USE



Billings Heights Neighborhood Boundary

City Boundary

*Zoning Classification**

Commercial

Mixed-Use

Planned Development

Residential Neighborhood

Rural Residential/Agriculture

Public and Open Space

**Zoning classifications on this map represent categories of zoning districts. Each classification includes multiple zoning districts to show a simplified view of current land use in the Heights.*



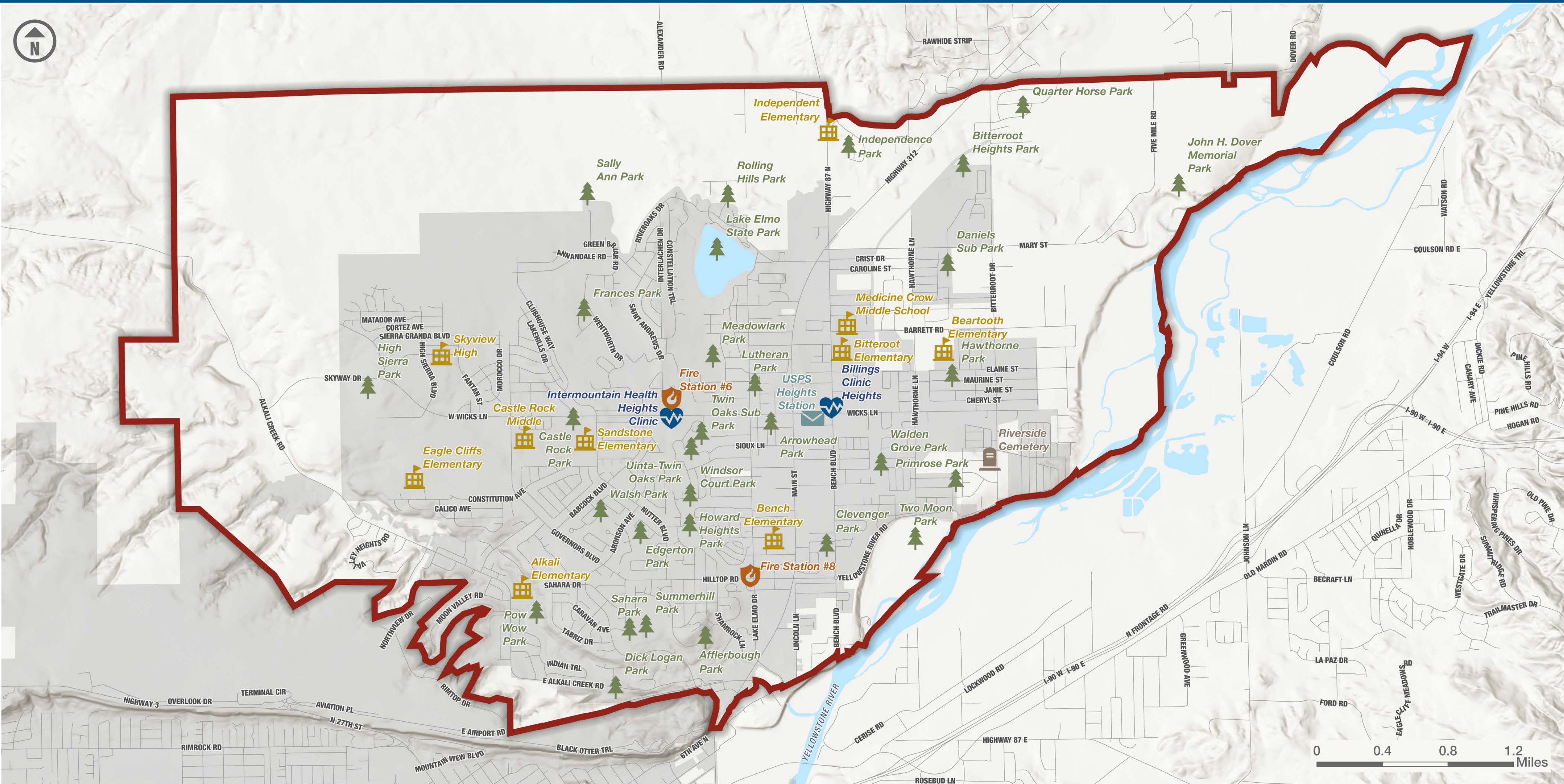
Where would you like to see residential and commercial growth in the Heights?

Stay Informed!

Learn more and share your thoughts by visiting billingsheightsplan.com or scanning the QR code to the right.



COMMUNITY & PUBLIC FACILITIES



Billings Heights Neighborhood Boundary

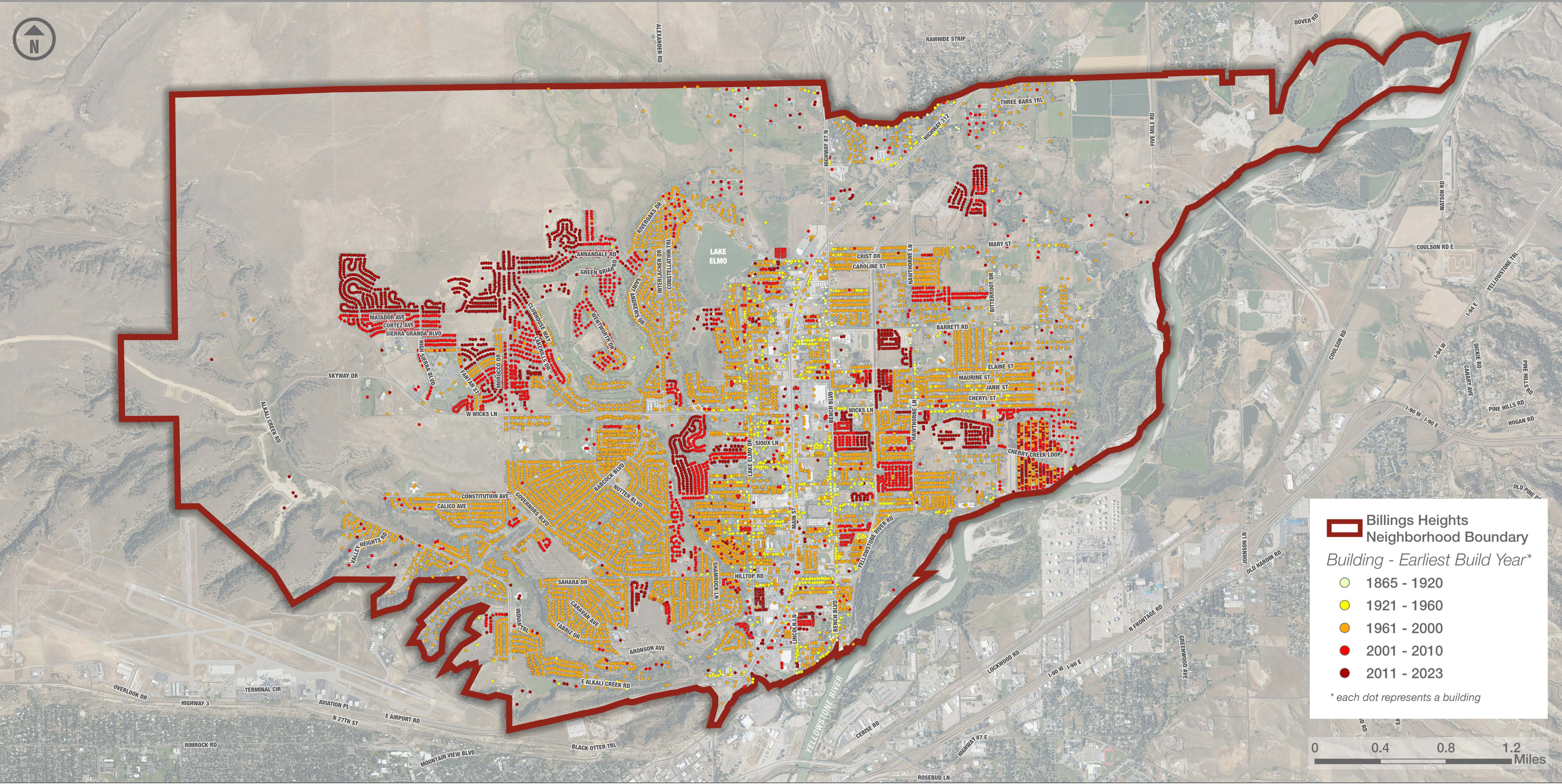
City Boundary

Public Facility

- Cemetery
- Park
- Post Office
- School
- Fire Station
- Medical Center

What community facilities are most important to you? Are there gaps or areas for improvement?

HEIGHTS DEVELOPMENT OVER TIME



PROJECT TIMELINE



KEY TERMS

NEIGHBORHOOD PLAN: An urban planning approach that helps shape new and existing neighborhoods. Neighborhood plans typically involve a clear vision and goals, recommendations for future development and implementation, and public participation to make sure the plan reflects the community's needs and values.

ZONING: Local laws or regulations that govern how property can and cannot be used in certain areas. Zoning districts are typically more specific than land use designations in Future Land Use maps. For example, Billings zoning districts include: N3 Suburban Neighborhood; CMU1 Corridor Mixed-Use; P1 Open Space, Parks, Recreation; and many others.

LIMITS OF ANNEXATION: Areas within these limits are under consideration to be annexed into the City of Billings in the future. The City and Yellowstone County define these areas to strategically and efficiently manage growth and delivery of municipal services.

FUTURE LAND USE MAP: Provides recommendations for future land uses within an area. Unlike zoning districts, future land use designations are not law and do not impact current uses on properties. Instead, the Future Land Use Map is a high-level view of what land uses the community envisions in different areas of the neighborhood. This map can highlight opportunities for future growth and development.



GET INVOLVED

WE WANT TO HEAR FROM YOU!

Your feedback is essential in creating a Neighborhood Plan that represents the community’s vision.

Help spread the word by sharing the QR codes on the right with your neighbors!

1

COMPLETE THE ENGAGEMENT SURVEY*

**(Paper versions of this survey are available upon request.)*



2

ADD COMMENTS TO THE INTERACTIVE MAP

