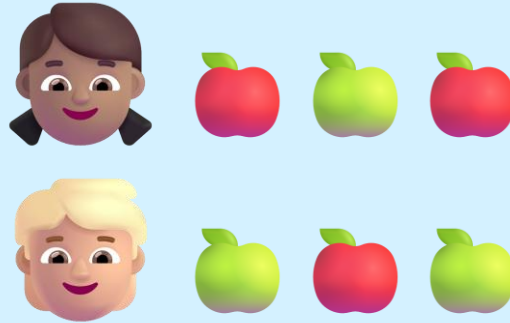


The Total Team

A Part-Part-Total Story



Mia and Sam and their apples!

A book about addition and math thinking!

Meet Our Friends!

This is the story of three friends:
Part One, Part Two, and Total!



Mia

Part One

One group of things



Sam

Part Two

Another group of things



Total

ALL the things together!

One sunny day, Mia and her friends went to the park.

"I have 3 red apples," said Mia.

"And I have 2 green apples," said her friend Sam.

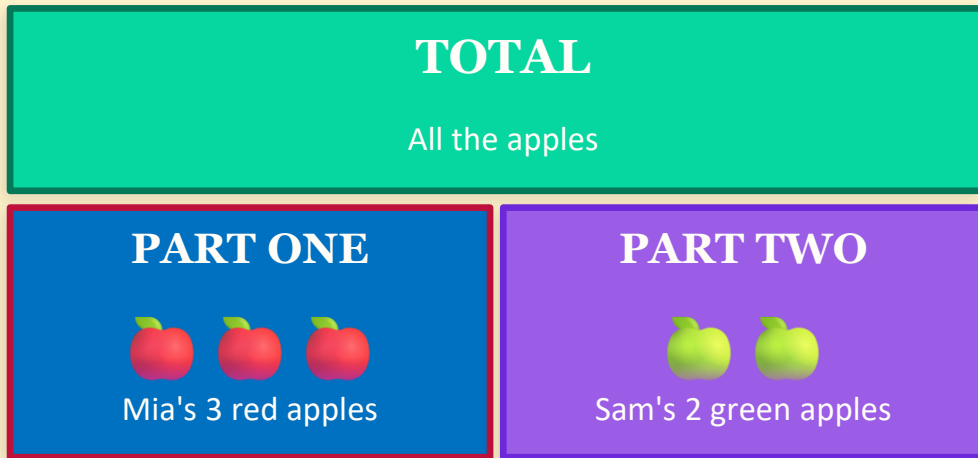
"How many apples do we have altogether?" they wondered.



Mia and Sam at the park

Part-Part-Total: What Does It Mean?

*"When you put two groups together, you make a TOTAL!
The two groups are the PARTS. Together they make the WHOLE!"*



"I know how to figure it out!" said Mia.

"We can use the Part-Part-Total helper!"

She drew a big box and wrote TOTAL at the top.

Then she drew two boxes below it — one for each PART.

"Part One is my 3 red apples.

Part Two is your 2 green apples.


Now I just count them ALL up!"



Mia draws the helper box!

Let's Use the Part-Part-Total Helper!

TOTAL
? apples altogether

PART 1


PART 2


$$\begin{array}{c} \text{🍏} \text{🍏} \text{🍏} + \text{🍏} \text{🍏} = 5 \text{ ⭐} \\ \text{Total} = 5 \text{ apples!} \end{array}$$

1

Find PART ONE
(one group of things)

2

Find PART TWO
(the other group)

3

Add the parts together
to find the TOTAL!



They found the answer!

Mia filled in the boxes.

Part One: 3 red apples.

Part Two: 2 green apples.

Then she counted all of them together...

"3... 4... 5!"

"The TOTAL is 5 apples!" she cheered.

Sam jumped up and down with joy! 🎉

Now YOU Try It! 🌟

There are 4 dogs playing in the front yard. 🐶 🐶 🐶 🐶
3 more dogs are playing in the back yard. 🐶 🐶 🐶
How many dogs are there in all?

TOTAL
_____ dogs

PART ONE
_____ dogs

PART TWO
_____ dogs

Great Job! Here's What We Know:

 +  =  **Total = 7 dogs!**



Parts are **PIECES**

A part is one group of things, like red apples or dogs in the yard.



Total is **ALL** of it

The total is what you get when you put **ALL** the parts together.



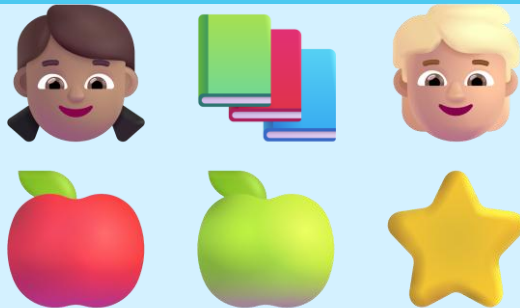
Use the **helper box!**

When you see two groups joining, draw the Part-Part-Total box to solve it.

The End!

Remember: When two parts come together,
they always make a TOTAL!

$$\text{PART} + \text{PART} = \text{TOTAL}$$



Mia and Sam learned something new today!

Part-Part-Total Graphic Organizer — Fill It In!

My word problem: _____

TOTAL _____ _____	
PART ONE _____ _____	PART TWO _____ _____