

TIRE CATALOGUE

ALL STEEL TRUCK & BUS RADIAL,
ST TRAILER, AND OTR RADIAL



WEST LAKE

Made in Thailand / North America Version



- A Company Established in Year 1958
- No. 1 Tire Manufacturer in China
- No. 8 of Top 75 Global Tire Manufacturers in Year 2022
- Sale Revenue Reached USD4.5 Billion in Year 2021

Zhongce Rubber Group Co., Ltd (ZC RUBBER) is a global tire company based in Hangzhou, China and was founded in 1958. Over our more than 60 years of history, we experienced continuous growth in quality and reputation to become the Top 10 tire manufacturer worldwide today.

Our engineers with our international R&D team focus on constant technological development and innovation spending millions of US dollars in research and development each year and upgrading our production and testing facilities. The ET Industrial Brain in the production process promises our smart production and guarantee tires with high quality, safety, and value with maximum efficiency.

We have formed an extensive global service network of about 1,200 distributors with 250,000 sales locations in 160 countries. Our subsidiaries in Thailand, Germany, Brazil, and the United States serve customers without any difference in time and language. We are dedicated to better support our suppliers, distributors, and customers through a one-stop service.

Safe and Value are always the key of our company. We take pride in the superior quality of our tire products and the first-rate services. We are still endeavoring to become one of the most respected tire manufacturers globally and craft a better future with all partners and friends.

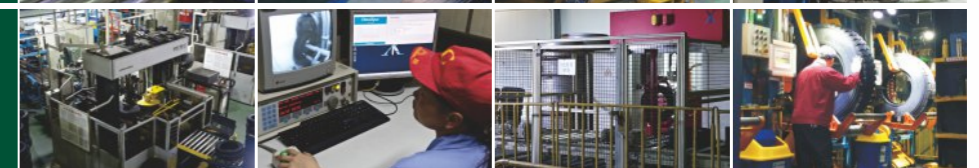
Manufacturing Bases



Advanced Production Facility



Strict Quality Inspection



R&D Center



China Compulsory Certification



US DOT Certification



European E-MARK Certification



SNI Certification of Indonesia



BIS Certification of India



INMETRO Certification of Brazil





ZC Rubber America

ZC Rubber Brazil

ZC Rubber Europe

ZC Rubber Thailand

ZC Rubber Headquarter

- ZC Rubber Chaoyang
- ZC Rubber Jiande
- ZC Rubber Fuyang
- ZC Rubber Qingquan
- ZC Rubber Yonggu
- ZC Rubber Anji
- ZC Rubber Jintan
- ZC Rubber Recycle Tech Co., Ltd.



Pre-Strain Contour Theory (PSCT)

Minimized tire profile deformation



After more than 20 years of painstaking research, ZC Rubber TBR Research Center has finally successfully developed the Pre-strain Contour theory (PSCT) and four technologies derived from this theory with independent

intellectual property rights. In 2020, the newly launched ZC Rubber premium truck and bus tires based on the theories and technologies have been recognized by the market.

- Tire Simulation of Pre-stressing Force through FEA (Finite Elements Analysis)
- Simulation Iteration based on pre-set tire profile
- Minimized tire profile deformation when inflated

Pre-strain Contour Theory is a new truck and bus tire design theory developed by ZC Rubber. We conducted the simulation of real tire performance under different scenarios and conditions of various commercial vehicle

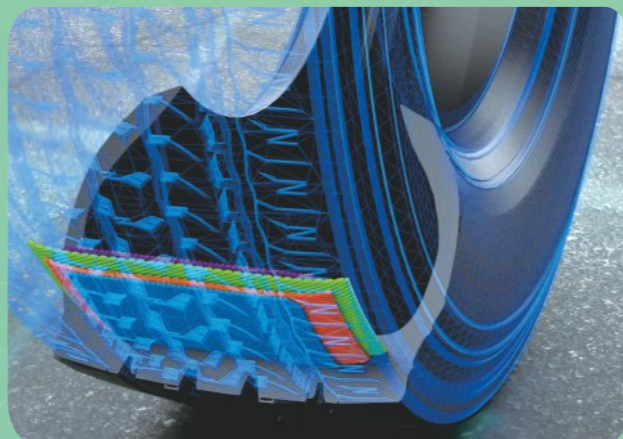
models. Based on the new theory and core technologies, the tire can achieve minimized profile deformation and heat generation when inflated and loaded, which greatly improves its tire life and overall performance.

BTCT

Belt Tension Control Technology (BTCT) - Enhanced tire life and durability

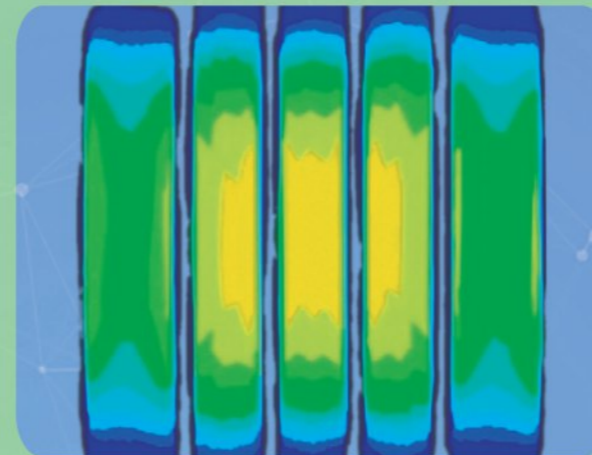
- Reduced shear force among steel belts
- Tension improved at the end of belts but reduced at the center
- Reduced deformation at the end of belts at high speed

BTCT means Belt Tension Control Technology. Based on PSCT, the shear force among steel belts is greatly reduced. It improves the tension at the end of belts but reduces the tension at the center, thus ensuring the minimized tire deformation at high speed. This features the crown with low heat generation and high strength, bringing a 20% improvement in durability and longer tire life.



PDOT

Pressure Distribution Optimization Technology (PDOT) - Longer mileage and higher fuel economy



- Optimized Tire Footprint and Better Contact Pressure Distribution
- Rectangular Footprint Shape for Even Pressure Distribution
- Reduced Tire Slipping in Cornering
- Improved Tire Life and Fuel Economy

The pressure distribution of the tire footprint affects fuel consumption and treadwear. PDOT is used to optimize the tire footprint and improve the contact pressure distribution. In a straight-line driving, the footprint maintains a rectangular shape for even pressure distributions; when cornering, it reduces slipping between the tire and the ground. This improves your tire life and fuel economy.

GSCT

Groove Strain-stress Control Technology (GSCT) - Less occurrence of groove cracking in driving

- Controllable Groove Pattern Shape When Inflated
- Uniform Distribution of Pattern Groove Bottom Stress for Lower Heat Generation
- Less Occurrence of Groove Cracking in Driving

Groove Strain-stress Control Technology can control the groove width change when the tire is inflated. This would reduce stress concentration in pattern groove bottom, thus reducing heat generation. It minimizes the occurrence of groove cracking and prolongs tire life.



SSHT

Shoulder Stiffness Hold Technology (SSHT) - Less uneven wear

- Less Uneven Wear of Tire Better Tire Inflation Profile through PSCT
- Reinforced Tire Sidewall
- Optimized Tire Footprint, Improved Contact Pressure Distribution and Reduced Heat Generation of Sidewall Deformation
- Less Uneven Wear of Tire

Shoulder Stiffness Hold Technology brings the tire inflation profile closer to the design profile. It greatly strengthens the tire sidewall. Meanwhile, it optimizes tire footprints, improves contact pressure distributions, and reduces the heat generated by sidewall deformation. This technology cuts the chances of sidewall bubbles and solves the problem of tire uneven wear.



CONTENTS

ALL STEEL TRUCK & BUS RADIAL TIRES



Long Haul

09



Regional

14



Mixed Service

20



Winter

24



Warranty

26





Long distance journey with constant speed and less braking and accelerating

Less fuel consumption and comfortable ride


High mileage performance

All Steel Truck & Bus Radial Tires



- Wide base super single tire applicable for both steer and trailer service
- Computer designed tread structure provide even wear with less pressure on the road
- Long life tread compound with less heating enhance the original tread life
- Strong steel belt improves the casing durability and promote multiple retreads



AT566 

SIZE	LR/PR	SERVICE INDEX	TREAD DEPTH 32nds	STANDARD RIM	OVERALL DIAMETER inch	SECTION WIDTH inch	MAX. LOAD CAPACITY AT COLD INFLATION PRESSURE							
							SINGLE				DUAL			
							kg	Lbs	kPa	psi	kg	Lbs	kPa	psi
445/50R22.5	L/20	161L	17	14.00	40.1	17.5	4625	10200	830	120	-	-	-	-



- Premium wide base drive tire suitable for long haul application.
- Robust tread blocks offer outstanding traction on both wet and dry road condition.
- Enhanced tire carcass guarantees lateral stability, longer mileage and easy retreadability



AD781

SIZE	LR/PR	SERVICE INDEX	TREAD DEPTH 32nds	STANDARD RIM	OVERALL DIAMETER inch	SECTION WIDTH inch	MAX. LOAD CAPACITY AT COLD INFLATION PRESSURE							
							SINGLE				DUAL			
							kg	Lbs	kPa	psi	kg	Lbs	kPa	psi
445/50R22.5	L/20	161L	27	14.00	40.1	17.5	4625	10200	830	120	-	-	-	-



- Five ribs with four wide, straight grooves for precise handling and outstanding traction
- Decoupling tread design suitable for long-distance travel
- Applicable for steer and free-rolling wheel position



CR989



SIZE	LR/PR	SERVICE INDEX	TREAD DEPTH 32nds	STANDARD RIM	OVERALL DIAMETER inch	SECTION WIDTH inch	MAX. LOAD CAPACITY AT COLD INFLATION PRESSURE							
							SINGLE				DUAL			
							kg	Lbs	kPa	psi	kg	Lbs	kPa	psi
11R22.5	G/14	144/142L	18	8.25	41.5	11.0	2800	6175	720	105	2650	5840	720	105
11R22.5	H/16	148/145M	18	8.25	41.5	11.0	3150	6940	850	123	2900	6390	850	123
295/75R22.5	G/14	144/141L	18	9.00	39.9	11.7	2800	6175	760	110	2575	5675	760	110
11R24.5	G/14	146/143L	19	8.25	43.5	11.0	3000	6610	720	105	2725	6005	720	105
11R24.5	H/16	149/146L	19	8.25	43.5	11.0	3250	7160	830	120	3000	6610	830	120
285/75R24.5	G/14	144/141L	19	8.25	41.3	11.1	2800	6175	760	110	2575	5675	760	110



- 4 zig-zag grooves provides improved traction in dry and wet conditions
- Optimized block design prevents retaining objects for improved damage resistance
- Wide shoulders provides stability and better performance for even wear
- Improved Shoulder lugs for optimal performance against wandering and reduces tread temperature



AD716



New generation drive tire with latest ZC-Rubbeer PSCT technology for long haul application

SIZE	LR/PR	SERVICE INDEX	TREAD DEPTH 32nds	STANDARD RIM	OVERALL DIAMETER inch	SECTION WIDTH inch	MAX. LOAD CAPACITY AT COLD INFLATION PRESSURE							
							SINGLE				DUAL			
							kg	Lbs	kPa	psi	kg	Lbs	kPa	psi
11R22.5	H/16	148/145L	26	8.25	41.9	11.0	3150	6940	850	123	2900	6390	850	123
295/75R22.5	G/14	144/141L	26	9.00	40.2	11.7	2800	6175	760	110	2575	5675	760	110
11R24.5	H/16	149/146L	26	8.25	43.9	11.0	3250	7160	830	120	3000	6610	830	120
285/75R24.5	G/14	144/141L	26	8.25	41.7	11.1	2800	6175	760	110	2575	5675	760	110



- Wide and deep tread helps to promote even wear and long tread life resulting in low cost per mile
- Solid close shoulder ribs help to improve even wear
- Three deep grooves evacuate water efficiently for traction
- Strong casing resists cuts and punctures for enhanced toughness and long casing life



CM983



SIZE	LR/PR	SERVICE INDEX	TREAD DEPTH 32nds	STANDARD RIM	OVERALL DIAMETER inch	SECTION WIDTH inch	MAX. LOAD CAPACITY AT COLD INFLATION PRESSURE							
							SINGLE				DUAL			
							kg	Lbs	kPa	psi	kg	Lbs	kPa	psi
11R22.5	G/14	144/142L	26	8.25	41.9	11.0	2800	6175	720	105	2650	5840	720	105
11R22.5	H/16	148/145L	26	8.25	41.9	11.0	3150	6940	850	123	2900	6390	850	123
295/75R22.5	G/14	144/141L	26	9.00	40.2	11.7	2800	6175	760	110	2575	5675	760	110
11R24.5	G/14	146/143L	26	8.25	43.9	11.0	3000	6610	720	105	2725	6005	720	105
11R24.5	H/16	149/146L	26	8.25	43.9	11.0	3250	7160	830	120	3000	6610	830	120
285/75R24.5	G/14	144/141L	26	8.25	41.6	11.1	2800	6175	760	110	2575	5675	760	110



- The linear 4-groove pattern offers straight drivability in all conditions
- Enhanced shoulder rib improves stability on the road
- Smooth lines at the edge of the grooves provide optimal footprint to help increase fuel efficiency
- Featuring lateral grooves and dimple siping, reflects contemporary trends in the long haul trailer application.




AT598




New generation trailer tire with latest ZC-Rubbeer PSCT technology for long haul application


SIZE	LR/PR	SERVICE INDEX	TREAD DEPTH 32nds	STANDARD RIM	OVERALL DIAMETER inch	SECTION WIDTH inch	MAX. LOAD CAPACITY AT COLD INFLATION PRESSURE							
							SINGLE				DUAL			
							kg	Lbs	kPa	psi	kg	Lbs	kPa	psi
11R22.5	G/14	144/142M	14	8.25	41.5	11.0	2800	6175	720	105	2650	5840	720	105
295/75R22.5	G/14	144/141L	14	9.00	39.9	11.7	2800	6175	760	110	2575	5675	760	110




- Cool-running compound construction reduces the energy generated within the tread for low rolling resistance
- Shallow tread depth promotes low rolling resistance for fuel economy and long even wear
- Four wide grooves provide all-season performance on wet and dry roads




CR915



SIZE	LR/PR	SERVICE INDEX	TREAD DEPTH 32nds	STANDARD RIM	OVERALL DIAMETER inch	SECTION WIDTH inch	MAX. LOAD CAPACITY AT COLD INFLATION PRESSURE							
							SINGLE				DUAL			
							kg	Lbs	kPa	psi	kg	Lbs	kPa	psi
11R22.5	G/14	144/142M	14	8.25	41.5	11.0	2800	6175	720	105	2650	5840	720	105
11R22.5	H/16	148/145M	14	8.25	41.5	11.0	3150	6940	850	123	2900	6390	850	123
295/75R22.5	G/14	144/141M	14	9.00	39.9	11.7	2800	6175	760	110	2575	5675	760	110




- Five ribs with four wide, straight grooves for precise handling and outstanding traction
- Stone rejector platforms prevent stones from lodging in grooves and drilling into belts
- Shallower tread depth helps to resist tread squirm and irregular wear forces for exceptionally long mileage



CR976A

SIZE	LR/PR	SERVICE INDEX	TREAD DEPTH 32nds	STANDARD RIM	OVERALL DIAMETER inch	SECTION WIDTH inch	MAX. LOAD CAPACITY AT COLD INFLATION PRESSURE							
							SINGLE				DUAL			
							kg	Lbs	kPa	psi	kg	Lbs	kPa	psi
255/70R22.5	H/16	140/137M	18	7.50	36.6	10.0	2500	5510	830	120	2300	5070	830	120
275/70R22.5	H/16	148/145M	18	8.25	37.7	10.9	3150	6940	900	130	2900	6395	900	130
275/80R22.5	H/16	149/146M	18	8.25	39.8	10.9	3250	7165	850	123	3000	6610	850	123
385/65R22.5	J/18	158L(160K)	20	11.75	42.2	15.3	4250	9370	850	125	-	-	-	-
385/65R22.5	L/20	160K(158L)	20	11.75	42.2	15.3	4500	9920	900	130	-	-	-	-
425/65R22.5	L/20	165K	19	12.25	44.3	16.9	5150	11340	830	120	-	-	-	-
445/65R22.5	L/20	169K	19	13.00	45.3	17.5	5800	12775	900	130	-	-	-	-
11R22.5	H/16	148/145M	20	8.25	41.5	11.0	3150	6940	850	123	2900	6390	850	123
12R22.5	J/18	152/149L	20	9.00	42.7	11.8	3550	7830	930	135	3250	7160	930	135
295/80R22.5	J/18	152/149M	19	9.00	41.1	11.7	3550	7830	900	131	3250	7160	900	131
10.00R20	H/16	146/143K	19	7.5	41.5	10.9	3000	6610	830	120	2725	6005	830	120
10.00R20	J/18	149/146J	19	7.5	41.5	10.9	3250	7160	930	135	3000	6610	930	135
11.00R20	J/18	152/149K	20	8.0	42.7	11.5	3550	7825	930	135	3250	7165	930	135



REGIONAL

Shorter journey with frequent braking, accelerating and turning

Improved road grip with maximum mileage

Exceptional tough type



Regional



- Strong computer designed tire casing guarantees outstanding capacity for heavy loads and highway
- Special sipes alongside tread ribs help to minimize heating for high speed running with heavy loads
- Special tread compound provides higher fuel efficiency with lower rolling resistance without sacrificing tire mileage



WTX1

SIZE	LR/PR	SERVICE INDEX	TREAD DEPTH 32nds	STANDARD RIM	OVERALL DIAMETER inch	SECTION WIDTH inch	MAX. LOAD CAPACITY AT COLD INFLATION PRESSURE							
							SINGLE				DUAL			
							kg	Lbs	kPa	psi	kg	Lbs	kPa	psi
205/65R17.5	J/18	129/127K(132/132F)	15	6.00	28.0	8.1	1850	4080	900	131	1750	3860	900	131
215/75R17.5	H/16	135/133J	15	6.00	30.2	8.3	2180	4805	850	123	2060	4540	850	123
235/75R17.5	H/16	143/141J(144/144F)	15	6.75	31.4	9.2	2725	6005	875	128	2575	5675	875	128
245/70R17.5	J/18	143/141J(146/146F)	15	7.50	31.1	9.8	2725	6005	875	128	2575	5675	875	128
265/70R19.5	J/18	143/141J	15	7.50	34.1	10.3	2725	6005	850	123	2575	5675	850	123
285/70R19.5	J/18	150/148J	15	8.25	35.2	11.1	3350	7390	900	131	3150	6940	900	131



New generation steer/trailer tire with latest ZC-Rubbeer PSCT technology for regional application

- Four wide tread grooves allows excellent water drainage
- Multi siping provides outstanding traction on both dry and wet road surfaces
- Computer designed tire casing assures excellent footprint for extended tire life



AZ599

SIZE	LR/PR	SERVICE INDEX	TREAD DEPTH 32nds	STANDARD RIM	OVERALL DIAMETER inch	SECTION WIDTH inch	MAX. LOAD CAPACITY AT COLD INFLATION PRESSURE							
							SINGLE				DUAL			
							kg	Lbs	kPa	psi	kg	Lbs	kPa	psi
215/75R17.5	H/16	135/133J	16	6.00	30.2	8.3	2180	4805	850	123	2060	4540	850	123
235/75R17.5	H/16	143/141J	16	6.75	31.4	9.2	2725	6005	875	128	2575	5675	875	128
225/70R19.5	G/14	128/126N	16	6.75	31.9	8.9	1800	3970	760	110	1700	3750	760	110
245/70R19.5	H/16	136/134M	18	7.50	33.0	9.8	2240	4940	830	120	2120	4675	830	120
11R22.5	H/16	148/145L	18	8.25	41.5	11.0	3150	6940	850	123	2900	6390	850	123
255/70R22.5	H/16	140/137M	18	7.50	36.6	10.0	2500	5510	830	120	2300	5070	830	120
275/70R22.5	H/16	148/145L	18	8.25	37.7	10.9	3150	6940	900	130	2900	6395	900	130
295/75R22.5	G/14	144/141L	18	9.00	39.9	11.7	2800	6175	760	110	2575	5675	760	110
315/80R22.5	J/18	154/151M	19	9.00	42.4	12.3	3750	8270	830	120	3450	7610	830	120
11R24.5	H/16	149/146L	18	8.25	43.5	11.0	3250	7160	830	120	3000	6610	830	120
285/75R24.5	G/14	144/141L	18	8.25	41.1	11.1	2800	6175	760	110	2575	5675	760	110

All Steel Truck & Bus Radial Tires

WEST LAKE



- Improved close shoulder helps to improve even wear resulting in long tread life
- Straight simple rib pattern improves even wearing and efficient water evacuation for excellent wet traction and handling
- Cross rib sipes slice through water for solid control on wet roads



CR960A



SIZE	LR/PR	SERVICE INDEX	TREAD DEPTH 32nds	STANDARD RIM	OVERALL DIAMETER inch	SECTION WIDTH inch	MAX. LOAD CAPACITY AT COLD INFLATION PRESSURE							
							SINGLE				DUAL			
							kg	Lbs	kPa	psi	kg	Lbs	kPa	psi
11R22.5	G/14	144/142L	18	8.25	41.5	11.0	2800	6175	720	105	2650	5840	720	105
11R22.5	H/16	148/145M	18	8.25	41.5	11.0	3150	6940	850	123	2900	6390	850	123
295/75R22.5	G/14	144/141L	18	9.00	39.9	11.7	2800	6175	760	110	2575	5675	760	110
11R24.5	G/14	146/143L	18	8.25	43.5	11.0	3000	6610	720	105	2725	6005	720	105
11R24.5	H/16	149/146L	18	8.25	43.5	11.0	3250	7160	830	120	3000	6610	830	120
285/75R24.5	G/14	144/141L	18	8.25	41.3	11.1	2800	6175	760	110	2575	5675	760	110
215/75R17.5	H/16	135/133J	16	6.00	30.2	8.3	2180	4805	850	123	2060	4540	850	123
235/75R17.5	H/16	143/141J	17	6.75	31.4	9.2	2725	6005	875	128	2575	5675	875	128
225/70R19.5	G/14	128/126N	16	6.75	31.9	8.9	1800	3970	760	110	1700	3750	760	110
245/70R19.5	H/16	136/134M	16	7.50	33.0	9.8	2240	4940	830	120	2120	4675	830	120
265/70R19.5	J/18	143/141J	18	7.50	34.1	10.3	2725	6005	850	123	2575	5675	850	123
285/70R19.5	H/16	146/144K	18	8.25	35.2	11.1	3000	6610	850	123	2800	6175	850	123
315/70R22.5	L/20	156/150L	19	9.00	39.9	12.3	4000	8820	900	130	3350	7390	900	130



New generation drive tire with latest ZC-Rubbeer PSCT technology for regional application

- Zigzag grooves and open shoulder provides ideal performance for traction
- Optimized block size prevents irregular wear
- Deeper groove and wider tread provide longer tread life in all weather conditions
- Unique tread design decreases stone retention



AD721

SIZE	LR/PR	SERVICE INDEX	TREAD DEPTH 32nds	STANDARD RIM	OVERALL DIAMETER inch	SECTION WIDTH inch	MAX. LOAD CAPACITY AT COLD INFLATION PRESSURE							
							SINGLE				DUAL			
							kg	Lbs	kPa	psi	kg	Lbs	kPa	psi
11R22.5	H/16	146/143L	26	8.25	41.9	11.0	3000	6610	830	120	2725	6005	830	120
295/75R22.5	G/14	144/141L	26	9.00	40.2	11.7	2800	6175	760	110	2575	5675	760	110
11R24.5	H/16	149/146L	26	8.25	43.9	11.0	3250	7160	830	120	3000	6610	830	120



Regional



- Wide and deep tread enhances cost per mileage, driving stability and traction on highway application
- Aggressive traction blocks helps to increase wet traction
- Strong open shoulder produces powerful traction
- Suitable for single axle vehicles



CM980



SIZE	LR/PR	SERVICE INDEX	TREAD DEPTH 32nds	STANDARD RIM	OVERALL DIAMETER inch	SECTION WIDTH inch	MAX. LOAD CAPACITY AT COLD INFLATION PRESSURE							
							SINGLE				DUAL			
							kg	Lbs	kPa	psi	kg	Lbs	kPa	psi
11R22.5	G/14	144/142L	26	8.25	41.9	11.0	2800	6175	720	105	2650	5840	720	105
11R22.5	H/16	148/145L	26	8.25	41.9	11.0	3150	6940	850	123	2900	6390	850	123
295/75R22.5	G/14	144/141L	26	9.00	40.2	11.7	2800	6175	760	110	2575	5675	760	110
11R24.5	G/14	146/143L	26	8.25	43.9	11.0	3000	6610	720	105	2725	6005	720	105
11R24.5	H/16	149/146L	26	8.25	43.9	11.0	3250	7160	830	120	3000	6610	830	120
285/75R24.5	G/14	144/141L	26	8.25	41.6	11.1	2800	6175	760	110	2575	5675	760	110



New generation pickup drive tire with latest ZC-Rubber PSCT technology for regional application



- 6-interlocking tread blocks and a symmetrical design engineered to promote even wear throughout the tire's life
- Tapered lateral grooves make the S737 a performer in all-weather applications
- Integrated tie bars reduce irregular wear and supports increased stability
- Angled lug and siping design improves overall traction and wet grip



AD717

SIZE	LR/PR	SERVICE INDEX	TREAD DEPTH 32nds	STANDARD RIM	OVERALL DIAMETER inch	SECTION WIDTH inch	MAX. LOAD CAPACITY AT COLD INFLATION PRESSURE							
							SINGLE				DUAL			
							kg	Lbs	kPa	psi	kg	Lbs	kPa	psi
225/70R19.5	G/14	128/126N	20	6.75	31.9	8.9	1800	3970	760	110	1700	3750	760	110
245/70R19.5	H/16	136/134M	20	7.50	33.0	9.8	2240	4940	830	120	2120	4675	830	120

All Steel Truck & Bus Radial Tires

WEST LAKE



- Traction block tread design for high drive wheel efficiency in all seasons
- Aggressive blading helps provide road-gripping traction
- Open shoulder produces powerful traction on wet and dry roads



CM986

SIZE	LR/PR	SERVICE INDEX	TREAD DEPTH 32nds	STANDARD RIM	OVERALL DIAMETER inch	SECTION WIDTH inch	MAX. LOAD CAPACITY AT COLD INFLATION PRESSURE							
							SINGLE				DUAL			
							kg	Lbs	kPa	psi	kg	Lbs	kPa	psi
215/75R17.5	H/16	135/133J	18	6.00	30.2	8.3	2180	4805	850	123	2060	4540	850	123
235/75R17.5	H/16	143/141J	19	6.75	31.4	9.2	2725	6005	875	128	2575	5675	875	128
225/70R19.5	G/14	128/126 N	19	6.75	31.9	8.9	1800	3970	760	110	1700	3750	760	110
245/70R19.5	H/16	136/134M	19	7.50	33.0	9.8	2240	4940	830	120	2120	4675	830	120
285/70R19.5	H/16	146/144K	20	8.25	35.2	11.1	3000	6610	850	123	2800	6175	850	123



- Special drive pattern with open shoulder provides good traction in wet and dry roads
- Durable tire casing enhances tire life



CM954

SIZE	LR/PR	SERVICE INDEX	TREAD DEPTH 32nds	STANDARD RIM	OVERALL DIAMETER inch	SECTION WIDTH inch	MAX. LOAD CAPACITY AT COLD INFLATION PRESSURE							
							SINGLE				DUAL			
							kg	Lbs	kPa	psi	kg	Lbs	kPa	psi
10.00R20	J/18	149/146J	20	7.5	41.5	10.9	3250	7160	930	135	3000	6610	930	135
11R22.5	H/16	148/145M	20	8.25	41.5	11.0	3150	6940	850	123	2900	6390	850	123



Regional



- Wide and deep tread enhances cost per mileage, driving stability and traction on highway application
- Open shoulder blocks improve traction on dry and wet road surface
- High blade density of tread design helps to provide even wearing
- Suitable for single axle vehicles



CM985

SIZE	LR/PR	SERVICE INDEX	TREAD DEPTH 32nds	STANDARD RIM	OVERALL DIAMETER inch	SECTION WIDTH inch	MAX. LOAD CAPACITY AT COLD INFLATION PRESSURE							
							SINGLE				DUAL			
							kg	Lbs	kPa	psi	kg	Lbs	kPa	psi
10.00R20	J/18	149/146J	24	7.5	41.5	10.9	3250	7160	930	135	3000	6610	930	135
12R22.5	J/18	152/149L	28	9.00	43.1	11.8	3550	7830	930	135	3250	7160	930	135



MIXED SERVICE

Used both on and off road
Heavy loads and outstanding durability
Special protection against the damage caused by the road condition



Mixed Service



New generation steer/trailer tire with latest ZC-Rubber PSCT technology for mixed service application

- Updated tread design for improved driving stability and uneven tread wear
- Open shoulder and multiple gripping edges provides excellent traction performance in on and off road conditions
- Stone ejector in the middle of grooves to assist in prevention of stone drilling
- Special tread compounds to resist chipping, chunking and tearing



AZ579

SIZE	LR/PR	SERVICE INDEX	TREAD DEPTH 32nds	STANDARD RIM	OVERALL DIAMETER inch	SECTION WIDTH inch	MAX. LOAD CAPACITY AT COLD INFLATION PRESSURE							
							SINGLE				DUAL			
							kg	Lbs	kPa	psi	kg	Lbs	kPa	psi
11R22.5	H/16	146/143L	21	8.25	41.5	11.0	3000	6610	830	120	2725	6005	830	120
255/70R22.5	H/16	140/137M	18	7.50	36.6	10.0	2500	5510	830	120	2300	5070	830	120
315/80R22.5	L/20	157/154K	21	9.00	42.4	12.3	4125	9090	900	130	3750	8270	900	130
11R24.5	H/16	149/146L	21	8.25	43.5	11.0	3250	7160	830	120	3000	6610	830	120



New generation steer/trailer tire with latest ZC-Rubber PSCT technology for mixed service application

- Notched circumferential grooves provide on/off road traction
- Stone ejector in all grooves with a heavy duty casing for retreadability
- Expanded groove width for enhanced traction performance
- Tie bars between each block prevents irregular wear
- Special tread compounds to resist chipping, chunking and tearing



AZ577

SIZE	LR/PR	SERVICE INDEX	TREAD DEPTH 32nds	STANDARD RIM	OVERALL DIAMETER inch	SECTION WIDTH inch	MAX. LOAD CAPACITY AT COLD INFLATION PRESSURE							
							SINGLE				DUAL			
							kg	Lbs	kPa	psi	kg	Lbs	kPa	psi
385/65R22.5	L/20	160K	23	11.75	42.2	11.4	4500	9920	900	130	—	—	—	—

All Steel Truck & Bus Radial Tires

WEST LAKE



- Aggressive multi-service, all position tread pattern promises excellent traction in ON/OFF road service
- Outstanding self-cleaning tread design ensures long-life service in ON/OFF road conditions
- Robust tread blocks and rugged casing allows for heavy loads and resist casing penetration and damage



AT557

SIZE	LR/PR	SERVICE INDEX	TREAD DEPTH 32nds	STANDARD RIM	OVERALL DIAMETER inch	SECTION WIDTH inch	MAX. LOAD CAPACITY AT COLD INFLATION PRESSURE							
							SINGLE				DUAL			
							kg	Lbs	kPa	psi	kg	Lbs	kPa	psi
255/70R22.5	H/16	140/137L	22	7.50	36.9	10.0	2500	5510	830	120	2300	5070	830	120
275/70R22.5	H/16	148/145L	23	8.25	37.7	10.9	3150	6940	900	130	2900	6395	900	130
385/65R22.5	J/18	158L(160K)	23	11.75	42.2	15.3	4250	9370	850	125	-	-	-	-
385/65R22.5	L/20	160K(158L)	23	11.75	42.2	15.3	4500	9920	900	130	-	-	-	-
425/65R22.5	L/20	165K	23	12.25	44.3	16.9	5150	11340	830	120	-	-	-	-
445/65R22.5	L/20	169K	23	13.00	45.3	17.5	5800	12775	900	130	-	-	-	-



- Aggressive lug design with large blocks at tread center provides excellent traction and braking on rough roads with mud or gravel and is self-cleaning for ease of maintenance
- Applicable in mining, logging, construction or rock and quarry operations with some very short on high-way use possible
- Special tread compounds resist chipping and chunking in rugged off-road conditions



CB972/E

SIZE	LR/PR	SERVICE INDEX	TREAD DEPTH 32nds	STANDARD RIM	OVERALL DIAMETER inch	SECTION WIDTH inch	MAX. LOAD CAPACITY AT COLD INFLATION PRESSURE							
							SINGLE				DUAL			
							kg	Lbs	kPa	psi	kg	Lbs	kPa	psi
11R22.5	H/16	148/145J	29	8.25	41.9	11.0	3150	6940	850	123	2900	6390	850	123
11R24.5	H/16	149/146F	29	8.25	43.9	11.0	3250	7160	830	120	3000	6610	830	120
10.00R20	J/18	149/146F	30	7.5	41.9	10.9	3250	7160	930	135	3000	6610	930	135
11.00R20	J/18	152/149F	31	8.0	43.1	11.5	3550	7825	930	135	3250	7165	930	135
12.00R24(CB972E)	L/20	160/157C	40	8.5	48.7	12.4	4500	9920	900	131	4125	9090	900	131
295/80R22.5	J/18	152/149J	26	9.00	41.3	11.7	3550	7830	900	131	3250	7160	900	131



Mixed Service



CR926/B/D

SIZE	LR/PR	SERVICE INDEX	TREAD DEPTH 32nds	STANDARD RIM	OVERALL DIAMETER inch	SECTION WIDTH inch	MAX. LOAD CAPACITY AT COLD INFLATION PRESSURE							
							SINGLE				DUAL			
							kg	Lbs	kPa	psi	kg	Lbs	kPa	psi
11R22.5(CR926D)	H/16	148/145M	21	8.25	41.5	11.0	3150	6940	850	123	2900	6390	850	123
11R24.5(CR926D)	H/16	149/146L	21	8.25	43.5	11.0	3250	7160	830	120	3000	6610	830	120
255/70R22.5(CR926D)	H/16	140/137L	18	7.50	36.6	10.0	2500	5510	830	120	2300	5070	830	120
295/80R22.5(CR926D)	H/16	150/147M	20	9.00	41.1	11.7	3350	7390	830	120	3075	6780	830	120
295/80R22.5(CR926D)	J/18	152/149L	20	9.00	41.1	11.7	3550	7830	900	131	3250	7160	900	131
315/80R22.5(CR926B)	J/18	154/151M(156/150L)	21	9.00	42.4	12.3	3750	8270	830	120	3450	7610	830	120
315/80R22.5(CR926B)	L/20	157/154K	21	9.00	42.4	12.3	4125	9090	900	130	3750	8270	900	130
7.50R16(CR926)	G/14	122/118L	15	6.00G	31.7	8.5	1500	3305	770	112	1320	2910	770	112
10.00R20(CR926)	J/18	149/146J	20	7.5	41.5	10.9	3250	7160	930	135	3000	6610	930	135
11.00R20(CR926)	J/18	152/149K	20	8.0	42.7	11.5	3550	7825	930	135	3250	7165	930	135
12.00R20(CR926)	J/18	154/151K	22	8.5	44.3	12.4	3750	8270	830	120	3450	7610	830	120
12.00R24(CR926B)	L/20	160/157K	24	8.5	48.3	12.4	4500	9920	900	131	4125	9090	900	131
12R22.5(CR926)	J/18	152/149L	20	9.00	42.7	11.8	3550	7830	930	135	3250	7160	930	135
13R22.5(CR926)	J/18	156/151K	20	9.75	44.3	12.6	4000	8820	875	128	3450	7610	875	128

- 3 circumferential grooves ensures good directional stability, even wear and smooth ride
- Heavy siping provides good braking stability and high lateral traction on wet and dry surface
- Improved tread compound helps resist tears and ensure good mileage in on and off road use
- Sidewall reinforcing ribs protects against impacts and scuffing



WINTER

Contribute to safety and operating in winter conditions
Outstanding grip performance on ice and snow road surface
Stable handling during braking and turning



- Strong biting edges guarantee excellent traction on dry and slippery road surface, especially in winter
- Specific tread compound offer good mileage without scarifying wet traction
- Wide open shoulder deliver additional traction without compromising tread life



NZ782

SIZE	LR/PR	SERVICE INDEX	TREAD DEPTH 32nds	STANDARD RIM	OVERALL DIAMETER inch	SECTION WIDTH inch	MAX. LOAD CAPACITY AT COLD INFLATION PRESSURE							
							SINGLE				DUAL			
							kg	Lbs	kPa	psi	kg	Lbs	kPa	psi
11R22.5	H/16	148/145L	25	8.25	41.5	11.0	3150	6940	850	123	2900	6390	850	123
11R24.5	H/16	149/146L	26	8.25	43.9	11.0	3250	7160	830	120	3000	6610	830	120



- Wide tread provide stability while improving handling on wet and snowy road
- Extra deep tread depth provide long original tread life
- Open shoulder grooves deliver additional traction without compromising tread life
- 3D siping provide excellent traction and braking



NZ788

SIZE	LR/PR	SERVICE INDEX	TREAD DEPTH 32nds	STANDARD RIM	OVERALL DIAMETER inch	SECTION WIDTH inch	MAX. LOAD CAPACITY AT COLD INFLATION PRESSURE							
							SINGLE				DUAL			
							kg	Lbs	kPa	psi	kg	Lbs	kPa	psi
11R22.5	G/14	144/142L	27	8.25	41.9	11.0	2800	6175	720	105	2650	5840	720	105
11R22.5	H/16	148/145L	27	8.25	41.9	11.0	3150	6940	850	123	2900	6390	850	123
11R24.5	G/14	146/143L	27	8.25	43.9	11.0	3000	6610	720	105	2725	6005	720	105
11R24.5	H/16	149/146L	27	8.25	43.9	11.0	3250	7160	830	120	3000	6610	830	120



WARRANTY



Warranty

LIMITED FREE REPLACEMENT WARRANTY

Zhongce Rubber Group Co., Ltd. warrants to the original purchaser that every new radial truck tire bearing the brand of “CHAOYANG”, “GOODRIDE”, “WESTLAKE” and “YARTU” will be free from defects in materials and workmanship. This warranty is limited to FIVE (5) years from the original date of manufacture. Any tire adjusted utilizing this limited free replacement warranty will be replaced at no charge if the tire fails during the first 2/32nds of an inch of original tread depth, due to a defect in materials and/or workmanship. This warranty is limited to the respective usable original tread depth, which is the original tread depth reduced by the Tread Wearing Index (TWI) depth.

TERMS & CONDITIONS

1. All radial truck tire warranties are limited to the original purchaser and the original vehicle on which they were mounted and are not assignable to subsequent purchasers or vehicles. Original receipts must accompany all claims.
2. Zhongce Rubber Group Co., Ltd. warrants that every new radial truck tire in the brand of “CHAOYANG”, “GOODRIDE”, “WESTLAKE” and “YARTU” sold by Hangzhou Zhongce Rubber Co., Ltd. in the United States will be free of defects in workmanship and/or materials.
3. The cost of mounting, balancing and any other charges by the dealer in connection with the replacement of the tire are required to be paid by the purchaser. The purchaser is also required to pay all applicable Federal, State/Provincial and local taxes.
4. What is not covered:
Exclusions this limited warranty does not apply to tire failures from:
 - Road Hazards (ie: punctures, snag, cut, impact breaks, etc)
 - Misalignment
 - Improper inflation
 - Wreck
 - Collision
 - Theft
 - Fire
 - Willful abuse
 - Claims for ozone or weather cracks during original tread life on tires more than 3 years from date of manufacture
 - Mechanical defects (such as brakes, shocks, worn steering and/or suspension parts, rim, etc..)
 - Vandalism
 - Overload
 - Use of improper rim
 - Improper mounting/dismounting
 - Chemical contamination
 - Misuse/Misapplication

All Steel Truck & Bus Radial Tires

WEST LAKE

NOR DOES THIS LIMITED WARRANTY APPLY TO ANY RADIAL TRUCK TIRES:

- With the serial # buffed or cut
- Marked blemish or NA (No Adjustment)
- Purchased or used outside the United States
- With remaining tread in any groove equal or less than Tread Wearing Index (TWI) depth
- With a ride complaint that occurs after the first 2/32nds of tread wear
- Retreaded with less than TWI depth of an inch of tread

Truck Tire Casings will be warranted against defects in material and/or workmanship through 100% of the first retread for a period of five years from the date of manufacture.

The following casing allowance will be applied to truck tires in the brands of “CHAOYANG”, “GOODRIDE”, “WESTLAKE” and “YARTU” in normal over the road service and manufactured after July 1, 2010.

For CR915 trailer application, the casing will be warranted through the first and second retread for a period of five years from the date of manufacture.

Size	Casing Allowance
LIGHT TRUCK	
8.5, 9.5R17.5	\$15.00
8R19.5	\$15.00
TUBELESS MEDIUM TRUCK	
8, 9, 10R22.5	\$35.00
11, 12R22.5	\$50.00
11R24.5, 13R22.5	\$50.00
TUBELESS LOW PROFILE	
205, 215, 225, 235/75R17.5	\$20.00
225, 245, 265/70R19.5	\$25.00
255, 275/70R22.5	\$50.00
295/75R22.5	\$50.00
295/80R22.5	\$50.00
315/80R22.5	\$50.00
385, 425, 445/65R22.5	\$60.00
445/50R22.5	\$75.00
285/75R24.5	\$50.00
TUBE TYPE	
10.00R20	\$35.00

PURCHASER OBLIGATIONS

In order to be eligible for the limited warranty service, the purchaser must:

1. Present the defective tire to an authorized dealer from whom the original purchase was made.
2. Present proof of purchase to the satisfaction of the dealer.
3. Complete and sign a warranty claim form which is available at any authorized dealer.
4. Retain and present the warranty card along with proof of date and place of purchase in order to make a claim. The authorized dealer's name and address from whom the tires were purchased must be also included on the warranty form.
5. At the time of purchase the tire(s) must be properly installed with proper air pressure and the wheels balanced.

DISCLAIMER

This warranty or any warranty stated or referred to herein, is exclusive and in lieu of any other warranty regarding the quality of the tires, whether expressed or implied and remedies for breach thereof shall be limited to those specifically provided herein.

WEST LAKE
PREMIUM OTR TIRES



WRO3



Made in Thailand

E3/L3/G3

Premium E3/L3/G3 designed for use in multiple applications like loader, articulated dump truck and grader.

- Heavy duty dual star carcass allows for excellent retreadability
- Deeper and wider tread guarantee longer tire life than most of competitors
- Unique cut and wear resistance compound
- Reinforced sidewall rib enhances protection against sidewall damage and puncture

Applications:



Size	Rating	Type	Rim	O.D.	S.W	T.D.	Infl. P.	L.C.C. (5 mph/10 kph)	Infl. P.	L.C.C. (25 mph/40 kph)	L.C.C. (30 mph/50 kph)	L.I
				Inch mm	Inch mm	32nds mm	psi KPa	lbs kg	psi KPa	lbs kg	lbs kg	
17.5R25	★★	TL	14.00/1.5	52.8	17.2	34	94	18700	65		10500	182A2/162A8
				1340	438	27	650	8500	450		4750	
20.5R25	★★	TL	17.00/2.0	58.9	20.0	42	94	25400	76		16100	193A2/177B
				1497	508	33	650	11500	525		7300	
23.5R25	★★	TL	19.50/2.5	63.4	23.1	45	94	32000	76		20400	201A2/185B
				1611	588	36	650	14500	525		9250	
26.5R25	★★	TL	22.00/3.0	68.4	26.0	47	94	40800	76		25400	209A2/193B
				1738	660	37	650	18500	525		11500	
29.5R25	★★	TL	25.00/3.5	73.1	29.1	54	94	49400	76		30900	216A2/200B
				1857	738	43	650	22400	525		14000	

TIRE CATALOGUE

SPECIALTY TRAILER TIRE





- A Company Established in Year 1958
- No. 1 Tire Manufacturer in China
- No. 9 of Top 75 Global Tire Manufacturers in Year 2021
- Sale Revenue Reached USD3.896 Billion in Year 2020

Zhongce Rubber Group Co., Ltd (ZC RUBBER) is a global tire company based in Hangzhou, China and was founded in 1958. Over our more than 60 years of history, we experienced continuous growth in quality and reputation to become the Top 10 tire manufacturer worldwide today.

Our engineers with our international R&D team focus on constant technological development and innovation spending millions of US dollars in research and development each year and upgrading our production and testing facilities. The ET Industrial Brain in the production process promises our smart production and guarantee tires with high quality, safety, and value with maximum efficiency.

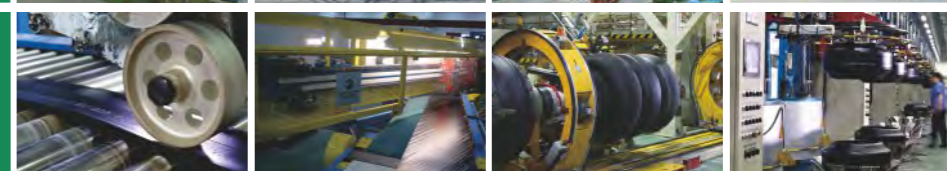
We have formed an extensive global service network of about 1,200 distributors with 250,000 sales locations in 160 countries. Our subsidiaries in Thailand, Germany, Brazil, and the United States serve customers without any difference in time and language. We are dedicated to better support our suppliers, distributors, and customers through a one-stop service.

Safe and Value are always the key of our company. We take pride in the superior quality of our tire products and the first-rate services. We are still endeavoring to become one of the most respected tire manufacturers globally and craft a better future with all partners and friends.

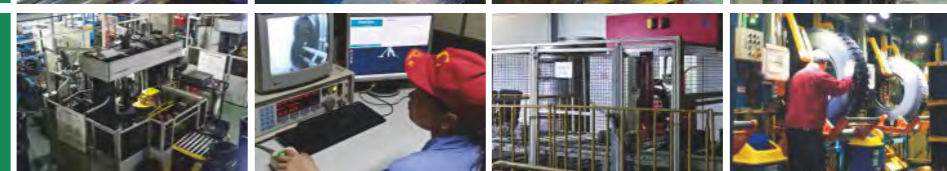
Manufacturing Bases



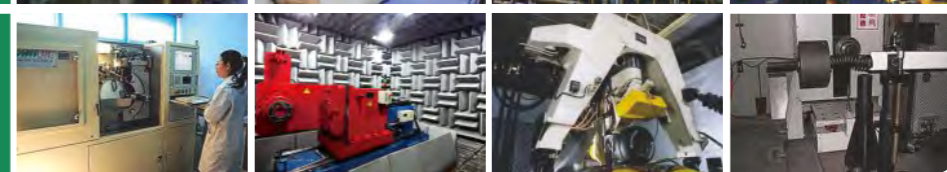
Advanced Production Facility



Strict Quality Inspection



R&D Center



SPECIALTY TRAILER TIRE



- Traditional nylon bias specialty trailer tires applicable for trailer service
- Strong nylon casing helps to resist scraping and chipping
- Suitable for low speed service (no more than 55 mph) only

A white motorhome is driving on a two-lane asphalt road that curves through a dense forest. The road is flanked by tall, thin trees. In the bottom left corner, there is a close-up, high-contrast image of a tire tread, showing deep grooves and sipes. The overall scene is captured in a high-contrast, almost black and white style with a greenish tint.



- Steel belted tires used for specialty trailer service
- Special tire structure with steel belts and nylon casing provides enhanced durability and tire life compared to regular bias tire

[illegible]

SPECIALTY TRAILER TIRE



ST226

- Nylon casing radial specialty trailer tires applicable for trailer service
- Double steel belts and 2-ply nylon casing provide excellent tire durability and extra loading capacity suitable for trailers with heavy load
- Durable tire casing with less heat ensures outstanding tire performance at high speed with heavy load

SPECIALTY TRAILER TIRE



ST200 



- Radial special trailer tires recommended for trailer service
- Cool-running compound and optimized profile design ensure super fuel efficiency and excellent drainage ability
- Zigzag rib and multi sipping design guarantee outstanding performance on various road condition

Size	LR/PR	Service Index	Tread Depth		Standard Rim	Section Width		Overall Diameter		Max. Load		Max. Air		TT/TL
			mm	32nds		mm	inch	mm	inch	kg	lbs	kpa	psi	
ST175/80R13	C/6PR	91/87L	7.0	9	5JB	177	6.97	610	24.02	615/545	1360/1200	350	50	Tubeless
ST185/80R13	D/8PR	99/95L	7.0	9	5JB	184	7.24	626	24.65	775/690	1710/1520	450	65	Tubeless
ST205/75R14	C/6PR	100/96L	7.0	9	5 ¹ / ₂ J	203	7.99	664	26.14	800/710	1760/1570	350	50	Tubeless
ST205/75R15	C/6PR	101/97L	7.0	9	5 ¹ / ₂ J	203	7.99	689	27.13	825/730	1820/1610	350	50	Tubeless
ST205/75R15	D/8PR	107/102L	7.0	9	5 ¹ / ₂ J	203	7.99	689	27.13	975/850	2150/1870	450	65	Tubeless
ST225/75R15	D/8PR	113/108L	7.5	9	6J	223	8.78	719	28.31	1150/1000	2540/2200	450	65	Tubeless
ST225/75R15	E/10PR	117/112L	7.5	9	6J	223	8.78	719	28.31	1285/1120	2830/2470	550	80	Tubeless
ST235/80R16	E/10PR	124/120L	7.5	9	6 ¹ / ₂ J	235	9.25	782	30.79	1600/1400	3520/3080	550	80	Tubeless
ST225/90R16	D/8PR	121/117L	7.5	9	6J	220	8.65	808	31.81	1450/1285	3200/2830	450	65	Tubeless
ST235/85R16	F/12PR	128/124L	7.5	9	6 ¹ / ₂ J	235	9.25	806	31.73	1800/1600	3960/3520	660	95	Tubeless

A white car towing a white caravan is driving on a winding asphalt road that curves along a body of water. In the foreground, a large, detailed image of a tire is shown, emphasizing the product being advertised. The background features a forested hillside and mountains under a clear sky. The text "SPECIALTY TRAILER TIRE" is overlaid in the top left corner.



- The special HEAT-LESS (using heat resistant compounding) technologies helps to slow down the tire aging and extend the tire life
- Double steel belts for enhanced strength helping puncture resistance and vehicle towing stability
- Long-life and low rolling resistance compound to offer long original treadwear and to promote fuel economy
- Full nylon cap available in all sizes for improved durability

SPECIALTY TRAILER TIRE



- The special HEAT-LESS (using heat resistant compounding) technologies helps to slow down the tire aging and extend the tire life
- Double steel belts for enhanced strength helping puncture resistance and vehicle towing stability
- Long-life and low rolling resistance compound to offer long original treadwear and to promote fuel economy
- Full nylon cap available in all sizes for improved durability

Size	LR/PR	Service Index	Tread Depth		Standard Rim	Section Width		Overall Diameter		Max. Load		Max. Air		TT/TL	Size	LR/PR	Service Index	Tread Depth		Standard Rim	Section Width		Overall Diameter		Max. Load		Max. Air		TT/TL
			mm	32nds		mm	inch	mm	inch	kg	lbs	kpa	psi					mm	32nds		mm	inch	mm	inch	kg	lbs	kpa	psi	
ST175/80R13	C/6PR	91/87L	7.5	9	5.0J	177	6.97	610	24.02	615/545	1360/1200	350	50	Tubeless	ST175/80R13	C/6PR	91/87M	7.5	9	5.0J	177	6.97	610	24.02	615/545	1360/1200	350	50	Tubeless
ST185/80R13	D/8PR	99/95L	7.5	9	5.0J	184	7.24	626	24.65	775/690	1710/1520	450	65	Tubeless	ST205/75R14	C/6PR	100/96M	7.8	10	5.5J	203	7.99	664	26.14	800/710	1760/1570	350	50	Tubeless
ST205/75R14	C/6PR	100/96L	7.8	10	5.5J	203	7.99	664	26.14	800/710	1760/1570	350	50	Tubeless	ST205/75R14	D/8PR	105/101M	7.8	10	5.5J	203	7.99	664	26.14	925/825	2040/1820	450	65	Tubeless
ST215/75R14	C/6PR	102/98L	7.5	9	6.0J	216	8.50	678	26.69	850/750	1870/1650	350	50	Tubeless	ST215/75R14	C/6PR	102/98M	7.8	10	6.0J	216	8.50	678	26.69	850/750	1870/1650	350	50	Tubeless
ST215/75R14	D/8PR	108/103L	7.8	10	6.0J	216	8.50	678	26.69	1000/875	2200/1930	450	65	Tubeless	ST205/75R15	C/6PR	101/97M	7.8	10	5.5J	203	7.99	689	27.13	825/730	1820/1610	350	50	Tubeless
ST205/75R15	C/6PR	101/97L	7.8	10	5.5J	203	7.99	689	27.13	825/730	1820/1610	350	50	Tubeless	ST205/75R15	D/8PR	107/102M	7.8	10	5.5J	203	7.99	689	27.13	975/850	2150/1870	450	65	Tubeless
ST205/75R15	D/8PR	107102L	7.8	10	5.5J	203	7.99	689	27.13	975/850	2150/1870	450	65	Tubeless	ST225/75R15	C/6PR	107/102M	8.2	10	6.0J	223	8.78	719	28.31	975/850	2150/1870	350	50	Tubeless
ST225/75R15	C/6PR	107/102L	8.2	10	6.0J	223	8.78	719	28.31	975/850	2150/1870	350	50	Tubeless	ST225/75R15	D/8PR	113/108M	8.2	10	6.0J	223	8.78	719	28.31	1150/1000	2540/2200	450	65	Tubeless
ST225/75R15	D/8PR	113/108L	8.2	10	6.0J	223	8.78	719	28.31	1150/1000	2540/2200	450	65	Tubeless	ST225/75R15	E/10PR	117/112M	8.2	10	6.0J	223	8.78	719	28.31	1285/1120	2830/2470	550	80	Tubeless
ST225/75R15	E/10PR	117/112L	8.2	10	6.0J	223	8.78	719	28.31	1285/1120	2830/2470	550	80	Tubeless	ST235/80R16	E/10PR	124/120M	8.2	10	6.5J	235	9.25	782	30.79	1600/1400	3520/3080	550	80	Tubeless
ST235/80R16	E/10PR	124/120L	8.2	10	6.5J	235	9.25	782	30.79	1600/1400	3520/3080	550	80	Tubeless	ST235/85R16	E/10PR	125/121M	8.2	10	6.5J	235	9.25	806	31.73	1650/1450	3640/3200	550	80	Tubeless
ST235/85R16	F/12PR	128/124L	8.2	10	6.5J	235	9.25	806	31.73	1800/1600	3960/3520	660	95	Tubeless															
ST225/90R16	D/8PR	121/117L	8.2	10	6.0J	220	8.66	808	31.81	1450/1285	3200/2830	450	65	Tubeless															

A white motorhome is driving on a multi-lane highway. In the foreground, a close-up of a tire tread is visible. The text "SPECIALTY TRAILER TIRE" is overlaid in the top left corner.



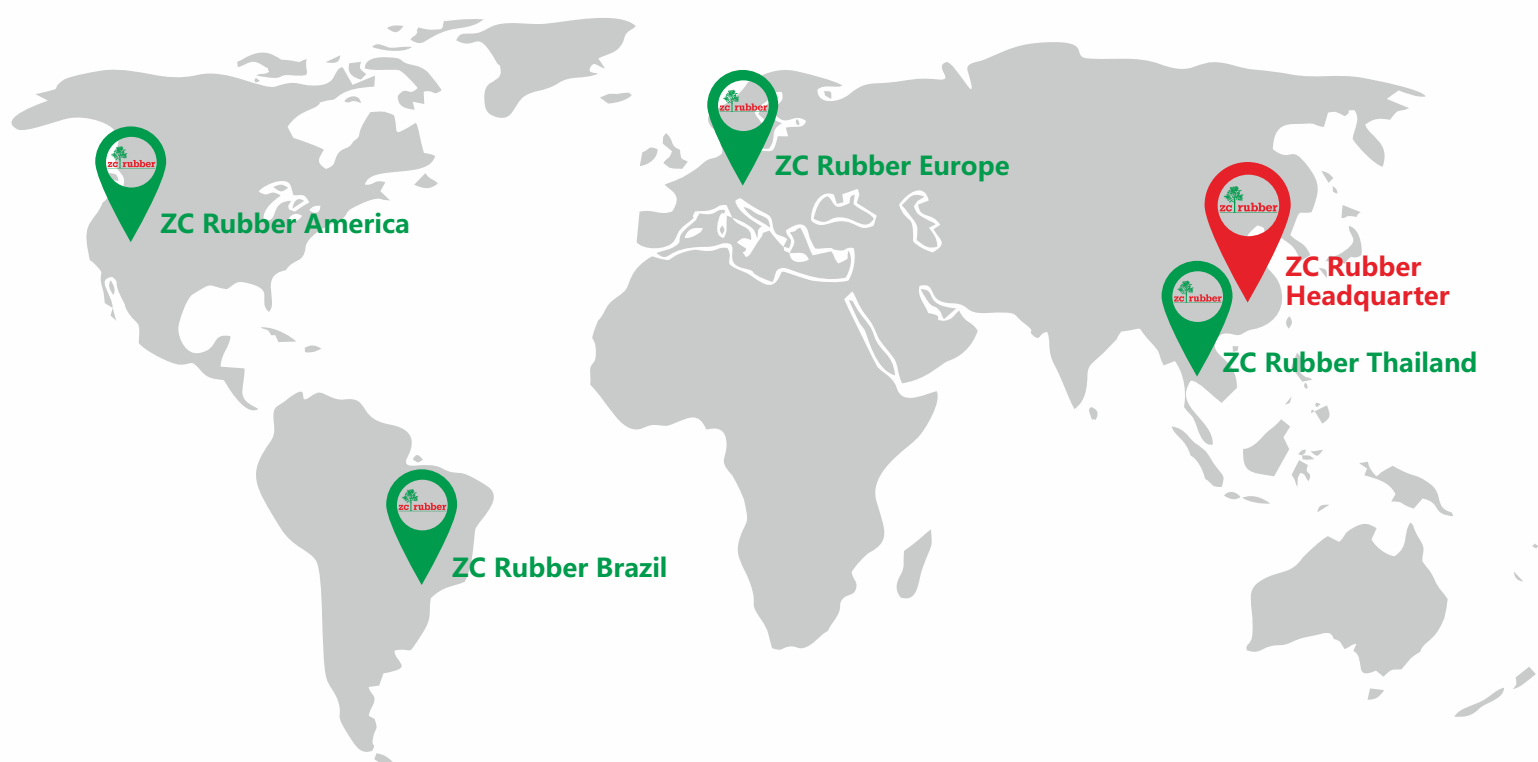
- Special designed all steel radial tire applicable for specialty trailer service
- Improved close shoulder helps to improve even wear resulting in long tread life
- Strong steel casing with steel belt provide extraordinary durability and longer tire life
- Straight simple rib pattern improves even wearing and efficient water evacuation for excellent wet traction and handling
- Cross rib sipes slice through water for solid control on wet roads

SPECIALTY TRAILER TIRE



- Special designed all steel radial tire applicable for specialty trailer service
- Improved close shoulder helps to improve even wear resulting in long tread life
- Strong steel casing with steel belt provide extraordinary durability and longer tire life
- Straight simple rib pattern improves even wearing and efficient water evacuation for excellent wet traction and handling
- Cross rib sipes slice through water for solid control on wet roads

Size	LR/PR	Service Index	Tread Depth		Standard Rim	Section Width		Overall Diameter		Max. Load		Max. Air		TT/TL	Size	LR/PR	Service Index	Tread Depth		Standard Rim	Section Width		Overall Diameter		Max. Load		Max. Air		TT/TL
			mm	32nds		mm	inch	mm	inch	kg	lbs	kpa	psi					mm	32nds		mm	inch	mm	inch	kg	lbs	kpa	psi	
ST235/80R16	G/14PR	129/125L	9.0	11	6½J	235	9.25	782	30.79	1850/1650	4080/3640	760	110	Tubeless	ST225/75R15	F/12PR	121/117M	10	12	6.00	223	8.78	719	28.31	1450/1290	3200/2840	655	95	Tubeless
ST235/85R16	G/14PR	132/127L	10.5	13	6½J	235	9.25	806	31.73	2000/1750	4400/3860	760	110	Tubeless															
215/75R17.5	J/18PR	135/133L	12.5	16	6	211	8.31	767	30.20	2180/2060	4805/4540	850	123	Tubeless															
235/75R17.5	J/18PR	143/141L	13.3	17	6.75	233	9.17	797	31.38	2725/2525	6005/5675	875	128	Tubeless															



ZHONGCE RUBBER GROUP CO., LTD.