

# AN ISO 9001-2015.ISO 17025 NABL CERTIFIED LAB.



## SHRI MATA VAISHNO DEVI SPACE RESEARCH QUALITY CONTROL LAB



- Member of:-1-Canada's Society of Petroleum and hydro Energy Geoscientist,  
2- American Society for Testing and Material.  
3- IPMS INDIA  
4- American Society of Geology.



REPORT NO: - SMVD/PW- SE/NH301/3038-65590JJ3324

Name of Project: - WATER SUPPLY

Job: -Carrying out Hydrological Survey for Borewell

Department: - NODORE

Date of survey: -26/04/2026

Date of Reporting: 26/04/2026

Client: - Kuldeep Singh Nadore

### HYDROGEOLOGICAL REPORT

#### LOCATION – 13 and 17

Various geophysical methods are available for assessing subsurface geological conditions. The primary objective of the field investigation conducted at the site was to determine the thickness and composition of subsurface formations and to identify potential groundwater-bearing zones.

This information was obtained through field investigations using Vertical Electrical Sounding (VES), a widely used geophysical technique for groundwater exploration. The VES method measures the variation of electrical resistivity of subsurface layers and helps in identifying different geological formations and aquifers. The methodology is briefly described below.

#### Resistivity Method

Vertical Electrical Sounding (VES) surveys were conducted to investigate the subsurface geological conditions and to confirm the presence of deep groundwater-bearing formations. The VES technique measures the variation of electrical resistivity with depth beneath the site of investigation.

#### Basic Principles

The electrical properties of rocks in the upper portion of the Earth's crust depend primarily on the following factors:

- Lithology of the formation
- Porosity of the rock
- Degree of saturation of pore spaces
- Salinity of groundwater present in the pores

Generally, water-saturated rocks exhibit lower resistivity compared to dry or unsaturated rocks. Higher porosity combined with saline groundwater further reduces resistivity values. Similarly, the presence of clay minerals and other conductive materials significantly decreases the electrical resistivity of subsurface formations.

Smvdsr



Page 1

Head office Dr.S R Singh complex Dhammi Nagrota Jammu 181221 Jammu and Kashmir (INDIA)

Pin Code 182144 Tele, cell No:-9419900222,7006437406, E-mail.dr.srsbms@yahoo.in,smvdsr@gmail.com, Web.Site.www.smvdsr.in

Cooperative office:- smvdsr Udhampur, Sikkim, Rajasthan, Punjab, Himachal, Maharastra,Goa Nepal,Bhutan,Srilanka,China,





# SHRI MATA VAISHNO DEVI SPACE RESEARCH QUALITY CONTROL LAB



- Member of:-1-Canada's Society of Petroleum and hydro Energy Geoscientist,  
2- American Society for Testing and Material.  
3- IPMS INDIA  
4- American Society of Geology.

The resistivity of earth materials can be studied by measuring the electrical potential distribution at the ground surface, which is generated when an electric current is passed through the ground. During the survey, electric current is introduced into the subsurface through two current electrodes, while the potential difference generated in the ground is measured using two potential electrodes placed between them. By analyzing the current flow and potential difference, the resistivity of the subsurface layers can be determined and the thickness of each layer can be estimated. The measured apparent resistivity values are plotted on logarithmic graphs as a function of electrode spacing. These curves help identify the number of subsurface layers and their thicknesses. In cases where more than two layers are present, the observed curves are compared with standard master curves to determine the true resistivity and thickness of each layer. One of the main advantages of this method is that it is less affected by lateral geological variations and is capable of investigating greater subsurface depths.

### Electrical Resistivity Equations

The electrical resistance  $R$  of a material is directly proportional to its length  $L$  and inversely proportional to its cross-sectional area  $A$ . This relationship is expressed as:

$$R = \rho \frac{L}{A}$$

Where:

- $R$  = Resistance (Ohm)
- $\rho$  (rho) = Specific resistivity of the material (Ohm-m)
- $L$  = Length of the conductor
- $A$  = Cross-sectional area

According to Ohm's Law:

$$R = \frac{\Delta V}{I}$$

Where:

- $\Delta V$  = Potential difference (Voltage)
- $I$  = Electric current

From the above relations, the specific resistivity can be determined as:

$$\rho = \frac{A}{L} \times \frac{\Delta V}{I}$$

Smvdsr





# SHRI MATA VAISHNO DEVI SPACE RESEARCH QUALITY CONTROL LAB



- Member of:-1-Canada's Society of Petroleum and hydro Energy Geoscientist,  
2- American Society for Testing and Material.  
3- IPMS INDIA  
4- American Society of Geology.

Where  $\rho$  represents the intrinsic electrical resistivity of the subsurface material.

### **Vertical Electrical Sounding (VES)**

In a resistivity sounding survey, electric current is injected into the ground using two current electrodes, while the resulting potential difference is measured using two additional electrodes positioned near the centre of the electrode array.

By measuring the current intensity and potential difference, and considering the spacing between the electrodes, the apparent resistivity of the ground can be calculated.

During the VES survey, the distance between the current electrodes is gradually increased in steps. This configuration is commonly known as the Schlumberger Array, which allows the electric current to penetrate deeper into the subsurface as the electrode spacing increases.

The observed resistivity values are plotted against electrode spacing on double logarithmic graphs, producing a resistivity curve that reflects the variation of resistivity with depth.

These curves are interpreted using specialised computer software to determine the true resistivity and thickness of individual subsurface layers. The resulting data enables hydrogeologists to identify geological formations and potential groundwater-bearing zones.



AN ISO 9001-2015.ISO 17025 NABL CERTIFIED LAB.



SHRI MATA VAISHNO DEVI SPACE RESEARCH QUALITY CONTROL LAB



- Member of:-1-Canada's Society of Petroleum and hydro Energy Geoscientist,  
 2- American Society for Testing and Material.  
 3- IPMS INDIA  
 4- American Society of Geology.

Table A for BH 17/10

HYDROLOGICAL LOG SHEET					
Location	Depth(m)	Resistivity (Ohms)	Groundwater Table	Salinity	Lithology
BH-1	01 to 10	110	0%	0%	Sandy Soil Gravels, Boulders
	10-20	135	0%	0%	Sandy Soil Gravels, Boulders
	20-30	214	0%	0%	Hard Rock with multiple Crakes
	30-40	214	0%	0%	Hard Rock with multiple Crakes
	40-50	125	0%	0%	Hard Rock with multiple Crakes
	50-60	123	0%	0%	Hard Rock with multiple Crakes
	60 - 70	365	0%	0%	Hard Rock with multiple Crakes
	70-80	321	0%	0%	Hard Rock with multiple Crakes
	80-90	144	0%	0%	Hard Rock with multiple Crakes
	<b>90-100</b>	<b>321</b>	<b>0%</b>	<b>0%</b>	Hard Rock with multiple Crakes
	100-140	541	0%	0%	Hard Rock with multiple Crakes
	140-180	512	0%	0%	Hard Rock with multiple Crakes
	180-200	524	28%	<b>12%</b>	Hard Rock with multiple Crakes
	200-250	354	<b>44%</b>	23%	Hard Rock with multiple Crakes
	250-300	254	18%	21%	Silty Soil Lyre
	300-350	120	23%	23%	Hard Rock with multiple Crakes
	350-450	1210	45%	<b>12%</b>	Silty Soil Lyre
450-550	1224	<b>35%</b>	16%	Silty Soil Lyre	

JAS-ANZ



Smvdsr

Head office Dr.S R Singh complex Dhammi Nagrota Jammu 181221 Jammu and Kashmir (INDIA)

Pin Code 182144 Tele, cell No:-9419900222,7006437406, E-mail.dr.srsbms@yahoo.in,smvdsr@gmail.com, Web.Site.www.smvdsr.in

Cooperative office:- smvdsr Udhampur, Sikkim, Rajastan, Punjab, Himachal, Maharastra,Goa Nepal,Bhutan,Srilanka,China,



# AN ISO 9001-2015.ISO 17025 NABL CERTIFIED LAB.



## SHRI MATA VAISHNO DEVI SPACE RESEARCH QUALITY CONTROL LAB



- Member of:-1-Canada's Society of Petroleum and hydro Energy Geoscientist,  
 2- American Society for Testing and Material.  
 3- IPMS INDIA  
 4- American Society of Geology.

### Ultrasound frequency Table

L	N	freq01	freq02	freq03	freq04	freq05	freq06	freq07	freq08	freq09	freq10	freq11	freq12	freq13	freq14	freq15
1	80	0.039	0.041	0.046	0.048	0.051	0.051	0.053	0.053	0.053	0.05	0.055	0.06	0.073	0.121	0.151
1	81	0.034	0.037	0.04	0.042	0.044	0.044	0.044	0.044	0.045	0.043	0.046	0.05	0.06	0.096	0.118
1	82	0.007	0.007	0.03	0.031	0.032	0.032	0.033	0.033	0.033	0.032	0.035	0.037	0.044	0.066	0.078
1	83	0.003	0.004	0.004	0.005	0.006	0.008	0.01	0.011	0.012	0.014	0.017	0.019	0.032	0.049	0.058
1	84	0.033	0.036	0.04	0.04	0.042	0.041	0.041	0.041	0.041	0.038	0.041	0.044	0.053	0.086	0.106
1	85	0.03	0.031	0.035	0.037	0.039	0.039	0.04	0.04	0.04	0.039	0.042	0.046	0.055	0.087	0.107
1	86	0.037	0.039	0.042	0.044	0.047	0.047	0.048	0.048	0.048	0.047	0.051	0.056	0.067	0.108	0.134
1	87	0.039	0.041	0.045	0.047	0.051	0.051	0.052	0.053	0.053	0.051	0.056	0.061	0.074	0.12	0.149
1	88	0.044	0.044	0.047	0.058	0.059	0.067	0.079	0.087	0.096	0.102	0.122	0.139	0.161	0.314	0.38
1	89	0.034	0.036	0.041	0.043	0.045	0.047	0.048	0.049	0.049	0.047	0.052	0.057	0.07	0.116	0.145
1	90	0.033	0.034	0.037	0.037	0.04	0.039	0.041	0.041	0.041	0.04	0.043	0.048	0.058	0.098	0.124
1	91	0.033	0.031	0.034	0.036	0.038	0.04	0.042	0.043	0.043	0.042	0.044	0.049	0.059	0.099	0.125
1	92	0.03	0.033	0.035	0.036	0.039	0.039	0.04	0.04	0.039	0.037	0.038	0.042	0.051	0.085	0.107
1	93	0.037	0.039	0.043	0.046	0.049	0.05	0.051	0.052	0.051	0.05	0.054	0.059	0.071	0.118	0.149
1	94	0.044	0.046	0.049	0.051	0.054	0.055	0.056	0.056	0.056	0.054	0.057	0.064	0.078	0.132	0.168
1	95	0.005	0.035	0.04	0.042	0.046	0.048	0.05	0.051	0.051	0.049	0.053	0.059	0.072	0.12	0.152
1	96	0.004	0.004	0.004	0.004	0.004	0.005	0.006	0.006	0.006	0.007	0.007	0.009	0.01	0.017	0.019
1	97	0.033	0.034	0.036	0.035	0.035	0.034	0.034	0.034	0.033	0.033	0.033	0.036	0.041	0.067	0.084

Smvdsr



Head office Dr.S R Singh complex Dhammi Nagrota Jammu 181221 Jammu and Kashmir (INDIA)  
 Pin Code 182144 Tele, cell No:-9419900222,7006437406, E-mail.dr.srsbms@yahoo.in,smvdsr@gmail.com, Web.Site.www.smvdsr.in  
 Cooperative office:- smvdsr Udhampur, Sikkim, Rajasthan, Punjab, Himachal, Maharastra,Goa Nepal,Bhutan,Srilanka,China,



# AN ISO 9001-2015.ISO 17025 NABL CERTIFIED LAB.



## SHRI MATA VAISHNO DEVI SPACE RESEARCH QUALITY CONTROL LAB



- Member of:-1-Canada's Society of Petroleum and hydro Energy Geoscientist,  
 2- American Society for Testing and Material.  
 3- IPMS INDIA  
 4- American Society of Geology.

freq1 6	freq1 7	freq1 8	freq1 9	freq2 0	freq2 1	freq2 2	freq2 3	freq2 4	freq2 5	freq2 6	freq2 7	freq2 8	freq2 9	freq3 0
0.187	0.199	0.2	0.178	0.175	0.153	0.133	0.124	0.118	0.116	0.112	0.11	0.104	0.107	0.132
0.142	0.151	0.151	0.133	0.132	0.118	0.105	0.102	0.101	0.1	0.098	0.095	0.084	0.085	0.098
0.093	0.094	0.094	0.082	0.084	0.079	0.076	0.078	0.08	0.08	0.078	0.075	0.063	0.061	0.061
0.066	0.067	0.066	0.059	0.063	0.06	0.061	0.065	0.068	0.068	0.066	0.062	0.051	0.051	0.043
0.13	0.139	0.139	0.124	0.121	0.107	0.091	0.086	0.085	0.081	0.079	0.079	0.07	0.069	0.077
0.129	0.135	0.135	0.119	0.118	0.106	0.098	0.096	0.096	0.097	0.094	0.092	0.08	0.08	0.092
0.161	0.171	0.171	0.149	0.148	0.133	0.12	0.118	0.118	0.12	0.117	0.113	0.102	0.104	0.124
0.182	0.192	0.193	0.169	0.168	0.15	0.135	0.132	0.13	0.133	0.128	0.124	0.109	0.109	0.127
0.469	0.507	0.518	0.482	0.466	0.409	0.362	0.371	0.356	0.343	0.337	0.324	0.205	0.314	0.307
0.178	0.189	0.191	0.171	0.17	0.151	0.134	0.132	0.129	0.13	0.126	0.122	0.103	0.099	0.104
0.154	0.164	0.165	0.149	0.148	0.133	0.118	0.114	0.112	0.114	0.111	0.11	0.101	0.103	0.124
0.153	0.164	0.167	0.153	0.148	0.132	0.118	0.116	0.114	0.111	0.107	0.104	0.092	0.091	0.101
0.131	0.143	0.145	0.134	0.132	0.119	0.104	0.099	0.099	0.094	0.091	0.089	0.082	0.082	0.095
0.183	0.194	0.196	0.177	0.176	0.158	0.143	0.141	0.139	0.137	0.134	0.127	0.105	0.101	0.099
0.204	0.218	0.219	0.197	0.19	0.172	0.152	0.148	0.149	0.145	0.14	0.134	0.117	0.116	0.13
0.185	0.198	0.201	0.184	0.179	0.158	0.143	0.141	0.141	0.139	0.133	0.128	0.106	0.099	0.098
0.022	0.023	0.022	0.02	0.021	0.021	0.022	0.017	0.02	0.017	0.017	0.016	0.016	0.017	0.02
0.103	0.111	0.112	0.103	0.1	0.095	0.081	0.079	0.079	0.076	0.074	0.072	0.061	0.066	0.064

**Smvdsr**



**AN ISO 9001-2015.ISO 17025 NABL CERTIFIED LAB.**



**SHRI MATA VAISHNO DEVI SPACE RESEARCH QUALITY CONTROL LAB**



- Member of:-1-Canada's Society of Petroleum and hydro Energy Geoscientist,  
 2- American Society for Testing and Material.  
 3- IPMS INDIA  
 4- American Society of Geology.

freq3 1	freq3 2	freq3 3	freq3 4	freq3 5	freq3 6	freq3 7	freq3 8	freq3 9	freq4 0	freq4 1	freq4 2	freq4 3	freq4 4	freq4 5
0.139	0.161	0.173	0.203	0.193	0.162	0.156	0.192	0.196	0.22	0.24	0.21	0.234	0.21	0.154
0.103	0.116	0.124	0.143	0.14	0.116	0.116	0.135	0.137	0.15	0.156	0.138	0.16	0.145	0.109
0.062	0.069	0.073	0.084	0.082	0.067	0.067	0.076	0.078	0.084	0.088	0.077	0.092	0.083	0.062
0.042	0.047	0.048	0.055	0.053	0.046	0.042	0.047	0.044	0.048	0.053	0.055	0.057	0.05	0.031
0.077	0.092	0.097	0.114	0.113	0.084	0.085	0.102	0.102	0.109	0.114	0.091	0.104	0.097	0.073
0.097	0.109	0.117	0.133	0.131	0.109	0.109	0.127	0.128	0.141	0.147	0.133	0.148	0.134	0.099
0.131	0.149	0.159	0.182	0.178	0.153	0.152	0.179	0.183	0.201	0.21	0.189	0.21	0.189	0.144
0.133	0.152	0.162	0.186	0.183	0.153	0.152	0.177	0.18	0.199	0.206	0.187	0.212	0.19	0.143
0.326	0.378	0.421	0.461	0.469	0.406	0.361	0.438	0.409	0.456	0.49	0.464	0.461	0.502	0.319
0.104	0.118	0.123	0.147	0.139	0.108	0.106	0.122	0.125	0.132	0.134	0.111	0.144	0.128	0.094
0.131	0.149	0.16	0.185	0.179	0.15	0.147	0.174	0.176	0.194	0.201	0.181	0.204	0.181	0.134
0.106	0.121	0.126	0.149	0.142	0.112	0.111	0.129	0.131	0.137	0.138	0.117	0.143	0.129	0.092
0.1	0.115	0.121	0.14	0.135	0.109	0.108	0.127	0.128	0.136	0.142	0.124	0.147	0.13	0.096
0.094	0.106	0.11	0.132	0.123	0.093	0.093	0.106	0.11	0.113	0.113	0.086	0.12	0.107	0.084
0.134	0.152	0.16	0.188	0.181	0.146	0.144	0.168	0.171	0.182	0.188	0.162	0.198	0.175	0.133
0.095	0.109	0.111	0.135	0.124	0.093	0.094	0.107	0.11	0.113	0.114	0.094	0.123	0.112	0.087
0.022	0.028	0.03	0.037	0.035	0.026	0.027	0.031	0.029	0.036	0.038	0.031	0.035	0.031	0.02
0.06	0.067	0.07	0.085	0.079	0.065	0.06	0.068	0.072	0.072	0.073	0.055	0.081	0.069	0.056

**Smvdsr**



AN ISO 9001-2015.ISO 17025 NABL CERTIFIED LAB.



SHRI MATA VAISHNO DEVI SPACE RESEARCH QUALITY CONTROL LAB



- Member of:-1-Canada's Society of Petroleum and hydro Energy Geoscientist,  
 2- American Society for Testing and Material.  
 3- IPMS INDIA  
 4- American Society of Geology.

freq46	freq47	freq48	freq49	freq50	freq51	freq52	freq53	freq54	freq55	freq56
0.111	0.12	0.104	0.07	0.062	0.056	0.042	0.006	0.008	0.004	0.007
0.073	0.081	0.069	0.047	0.041	0.038	0.03	0.005	0.007	0.004	0.006
0.038	0.045	0.038	0.012	0.011	0.009	0.007	0.005	0.006	0.003	0.005
0.019	0.017	0.015	0.011	0.01	0.009	0.006	0.003	0.003	0.002	0.002
0.048	0.061	0.05	0.034	0.032	0.008	0.007	0.006	0.005	0.004	0.006
0.068	0.074	0.063	0.043	0.038	0.035	0.007	0.005	0.007	0.003	0.005
0.102	0.105	0.089	0.062	0.054	0.048	0.037	0.005	0.008	0.004	0.006
0.099	0.108	0.092	0.062	0.055	0.05	0.038	0.005	0.008	0.004	0.005
0.181	0.191	0.167	0.113	0.098	0.087	0.064	0.044	0.036	0.037	0.008
0.059	0.074	0.063	0.04	0.037	0.035	0.007	0.005	0.005	0.003	0.006
0.097	0.102	0.088	0.059	0.051	0.047	0.036	0.005	0.007	0.004	0.006
0.062	0.076	0.062	0.041	0.036	0.034	0.007	0.005	0.005	0.003	0.008
0.064	0.075	0.065	0.042	0.037	0.036	0.008	0.005	0.006	0.004	0.008
0.052	0.066	0.055	0.037	0.035	0.03	0.007	0.005	0.005	0.003	0.007
0.084	0.101	0.085	0.056	0.051	0.047	0.036	0.006	0.006	0.004	0.008
0.057	0.064	0.058	0.036	0.034	0.032	0.007	0.005	0.005	0.003	0.006
0.017	0.017	0.015	0.01	0.009	0.008	0.006	0.004	0.004	0.005	0.003
0.03	0.046	0.033	0.009	0.01	0.008	0.007	0.005	0.006	0.004	0.006

Smvdsr



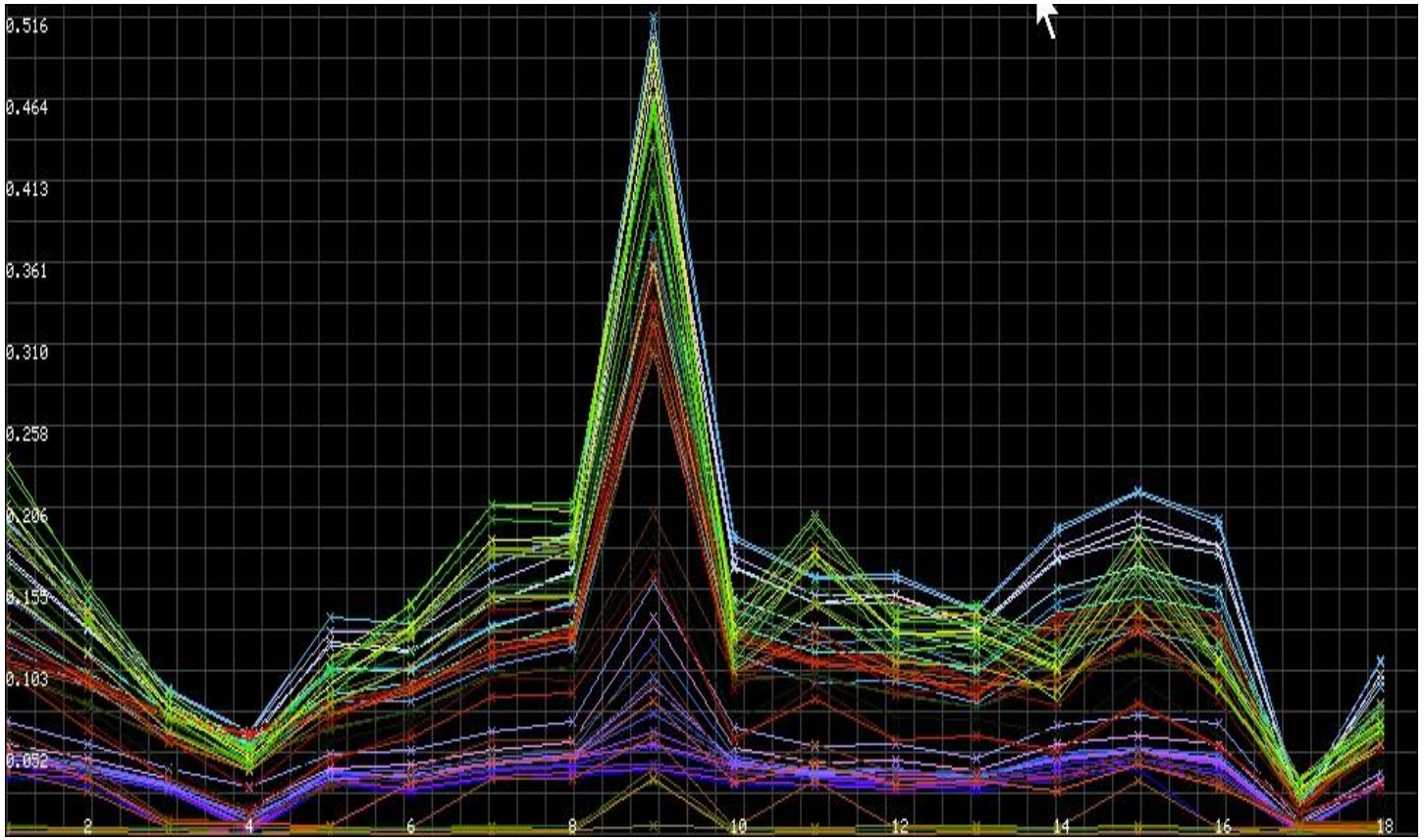


# SHRI MATA VAISHNO DEVI SPACE RESEARCH QUALITY CONTROL LAB



- Member of:-1-Canada's Society of Petroleum and hydro Energy Geoscientist,  
2- American Society for Testing and Material.  
3- IPMS INDIA  
4- American Society of Geology.

## Profile Curve-1



JAS-ANZ



Smvdsr

Head office Dr.S R Singh complex Dhammi Nagrota Jammu 181221 Jammu and Kashmir (INDIA)  
Pin Code 182144 Tele, cell No:-9419900222,7006437406, E-mail.dr.srsbms@yahoo.in,smvdsr@gmail.com, Web.Site.www.smvdsr.in  
Cooperative office:- smvdsr Udampur, Sikkim, Rajastan, Punjab, Himachal, Maharastra,Goa Nepal,Bhutan,Srilanka,China,



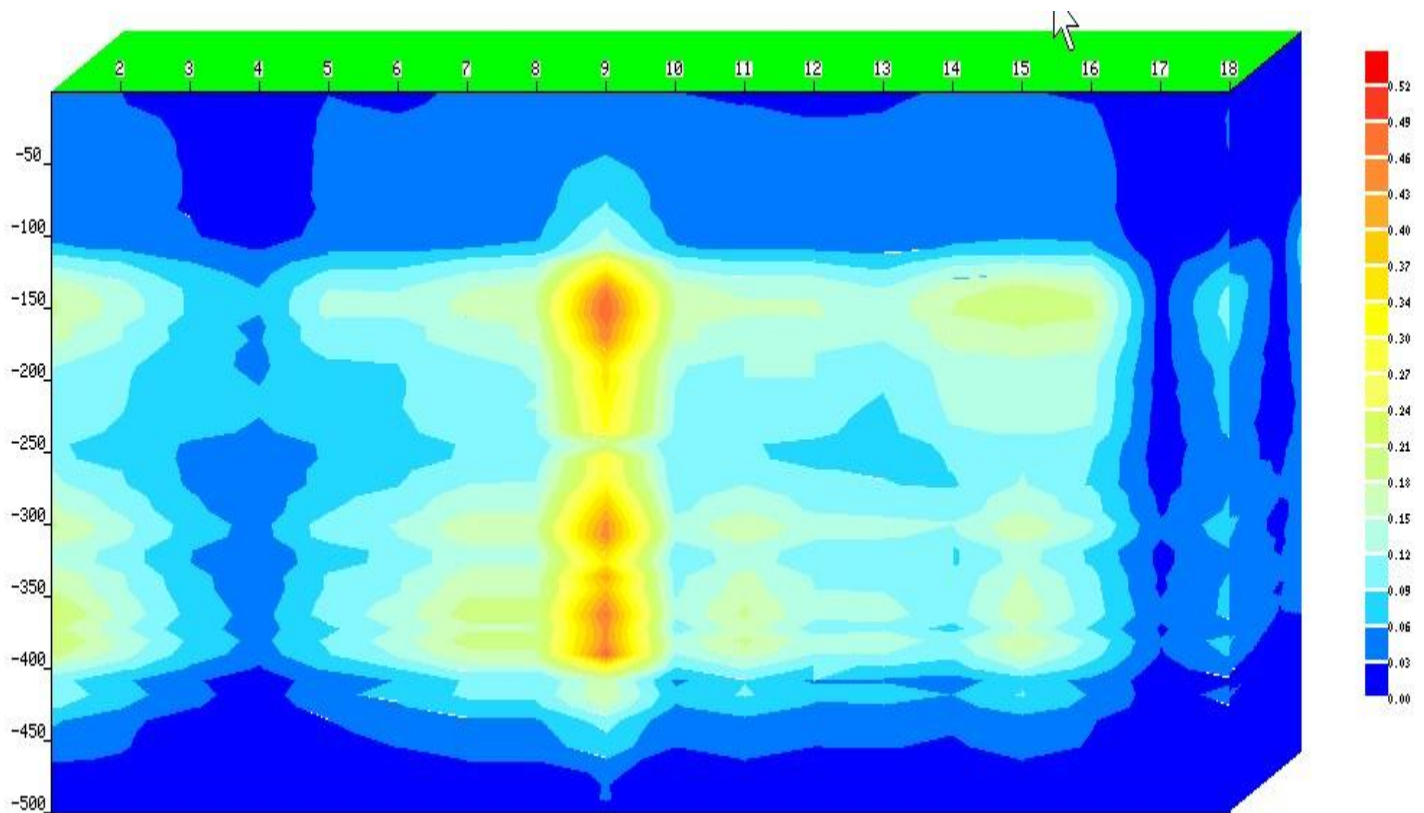


# SHRI MATA VAISHNO DEVI SPACE RESEARCH QUALITY CONTROL LAB



- Member of:-1-Canada's Society of Petroleum and hydro Energy Geoscientist,  
2- American Society for Testing and Material.  
3- IPMS INDIA  
4- American Society of Geology.

## 3D Profile



Smvdsr



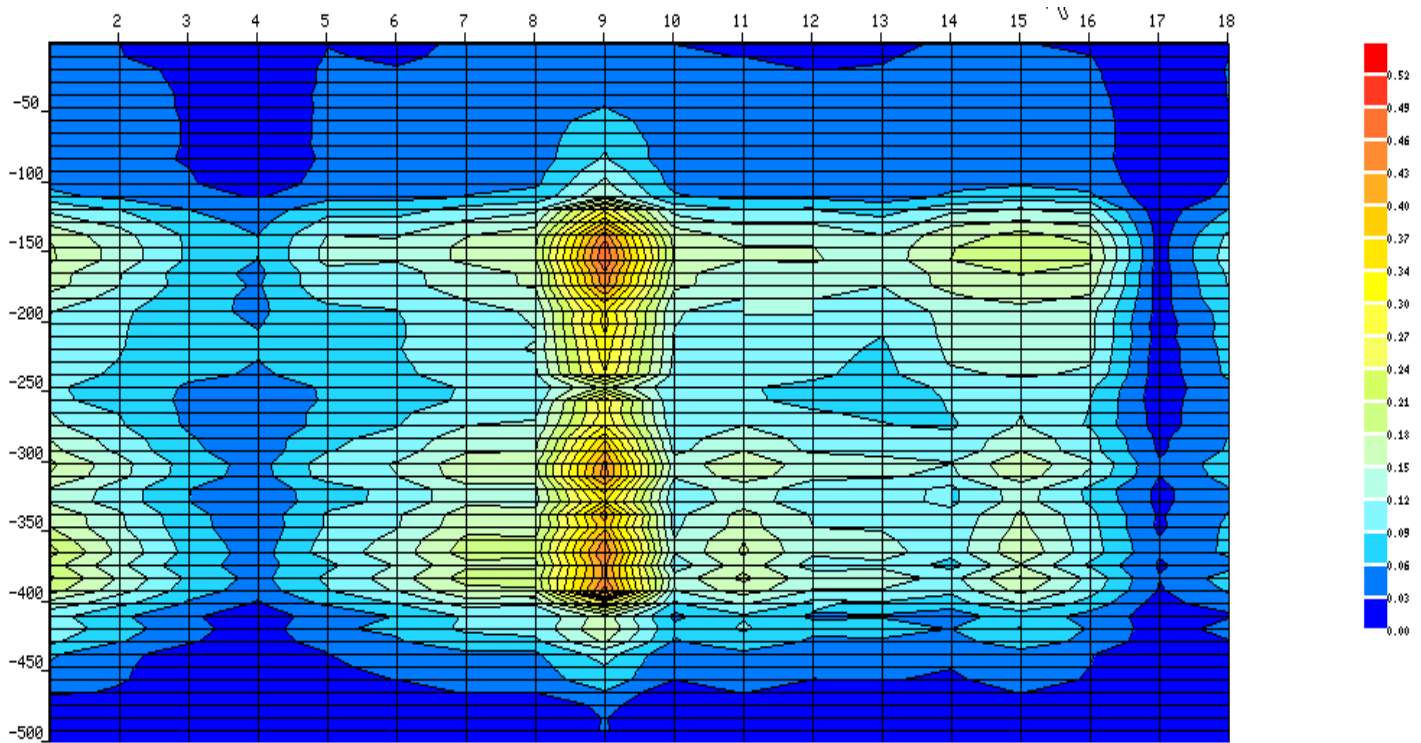


# SHRI MATA VAISHNO DEVI SPACE RESEARCH QUALITY CONTROL LAB



- Member of:-1-Canada's Society of Petroleum and hydro Energy Geoscientist,  
2- American Society for Testing and Material.  
3- IPMS INDIA  
4- American Society of Geology.

## 3D L-1



## Conclusion

A detailed hydrogeological investigation was conducted at the site to evaluate the subsurface hydrogeological conditions up to a depth of approximately 550 m and within a radius of about 150 m. The survey was carried out using 2D and 3D long-range groundwater exploration equipment (GRE/TERRA GT-6000S) to identify potential zones of fresh groundwater.

Based on the interpretation of geoelectrical and hydrological data obtained through the GRE-1 sensor-based system and GRE-2 long-range system (German Technology) using 2D and 3D imaging techniques, the following conclusions were drawn:

Smvdsr



# AN ISO 9001-2015.ISO 17025 NABL CERTIFIED LAB.



## SHRI MATA VAISHNO DEVI SPACE RESEARCH QUALITY CONTROL LAB



- Member of:-1-Canada's Society of Petroleum and hydro Energy Geoscientist,  
2- American Society for Testing and Material.  
3- IPMS INDIA  
4- American Society of Geology.

The interpretation of groundwater data from the GRE-1 3D sensor system and GRE-2 long-range survey tests indicates the presence of an alluvial aquifer formation. The subsurface strata mainly consist of Hard rock and silt formations, with admixtures of boulders, pebbles, and cobbles in the upper layer to a depth of about 10 m.

At Borehole Location BH-7 and BH-12, a potential groundwater zone was identified between 185m and 550 m below ground level (BGL). The investigation indicates approximately 45% medium fresh groundwater availability, with an estimated salinity of about 12%.

### Recommendation

Based on the results obtained from the Electrical Resistivity Survey and the 3D sensor-based GRE-1 and GRE-2 long-range freshwater survey systems, it is concluded that the subsurface zone between 175 m and 550 m depth represents the most promising groundwater-bearing formation.

This zone is expected to contain medium to high volumes of fresh groundwater, capable of supplying approximately 4200-5500 LPH of safe water, which can adequately meet the client's water requirements.

The surveyed location lies in a hilly terrain, and therefore, the groundwater occurrence in this area is considered permanent and relatively independent of seasonal rainfall infiltration up to a depth of about 475 m. Below this depth, a stable and permanent groundwater table has been identified.

It is therefore recommended to drill a borewell with a diameter ranging from 400 mm to 175 mm up to a depth of 550 m to 550 m at location BH-10 to obtain the required groundwater discharge for daily usage.

The client is advised to use proper scientific drilling techniques during borewell construction. Drilling operations should preferably be carried out under the guidance of qualified hydrogeological experts to ensure accurate well development and sustainable groundwater extraction.

Additionally, it is recommended that only the identified locations L-4 and L-6 should be considered for borewell drilling. Small surface water channels or canals (2–3 feet wide) present in the area do not significantly influence the groundwater table.

### Safety Assessment of Borehole Locations

1. BH-12 – Not recommended / Not safe for groundwater extraction.
2. BH-7 – safe for groundwater extraction.



**DR. S. R. SINGH**  
Geotech and Geophysical Consultant  
Department of Geology  
SMVDSR JAMMU

JAS-ANZ



Smvdsr



Head office Dr.S R Singh complex Dhammi Nagrota Jammu 181221 Jammu and Kashmir (INDIA)

Pin Code 182144 Tele, cell No:-9419900222,7006437406, E-mail.dr.srsbms@yahoo.in,smvdsr@gmail.com, Web.Site.www.smvdsr.in

Cooperative office:- smvdsr Udhampur, Sikkim, Rajasthan, Punjab, Himachal, Maharastra,Goa Nepal,Bhutan,Srilanka,China,

