

COVID-19

COMPLIANCE OFFICER MEETING

September 18, 2020

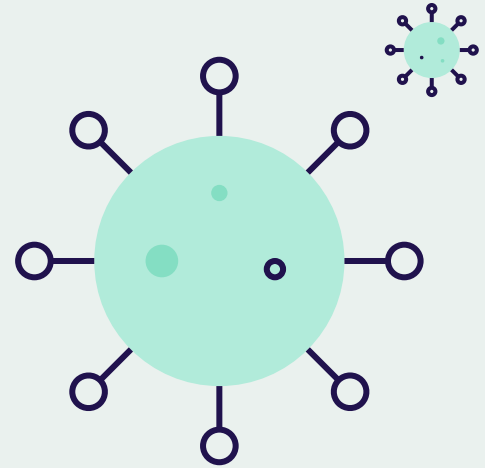


AGENDA

1. COVID-19 Overview
 - a. COVID-19 Symptoms
 - b. Contracting the COVID-19 virus
 - c. COVID-19 Timeline
2. CA Blueprint
 - a. What is the CA Blueprint
 - b. Tiers by County
3. Compliance Officer Duties
4. Containment Response & Control Plan
5. Exposure Management Plan
 - a. Positive COVID-19 Case Formstack
6. Specialized Services
7. COVID-19 Compliance Taskforce Drive & Resources

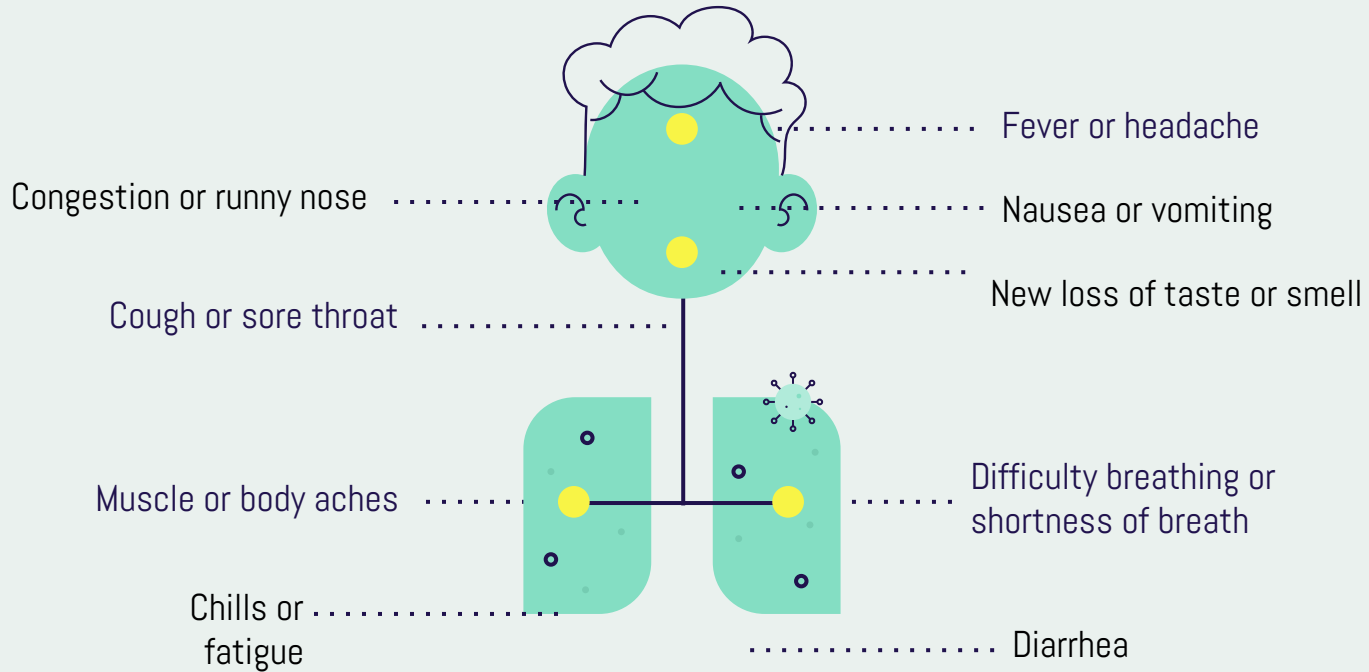
COVID-19 OVERVIEW

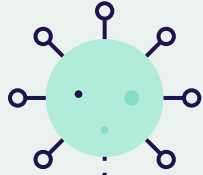
COVID-19 is the disease caused by the newly identified coronavirus (SARS-CoV-2) which which has resulted in a worldwide Pandemic. COVID-19 is spread through respiratory droplets released into the air when an infected person coughs or sneezes.



COVID-19 SYMPTOMS

Symptoms may appear 2-14 days after exposure to the virus





HOW DO YOU GET COVID-19?

How does COVID-19 Spread?

- Between people who are in close contact with one another (within about 6 feet)
- Through respiratory droplets produced when an infected person coughs, sneezes, or talks
- These droplets can land in the mouths or noses of people who are nearby or possibly be inhaled into the lungs
- COVID-19 may be spread by people who are not showing symptoms

Individuals over the age of 65 or individuals with certain underlying medical conditions are at higher risk of contracting the virus

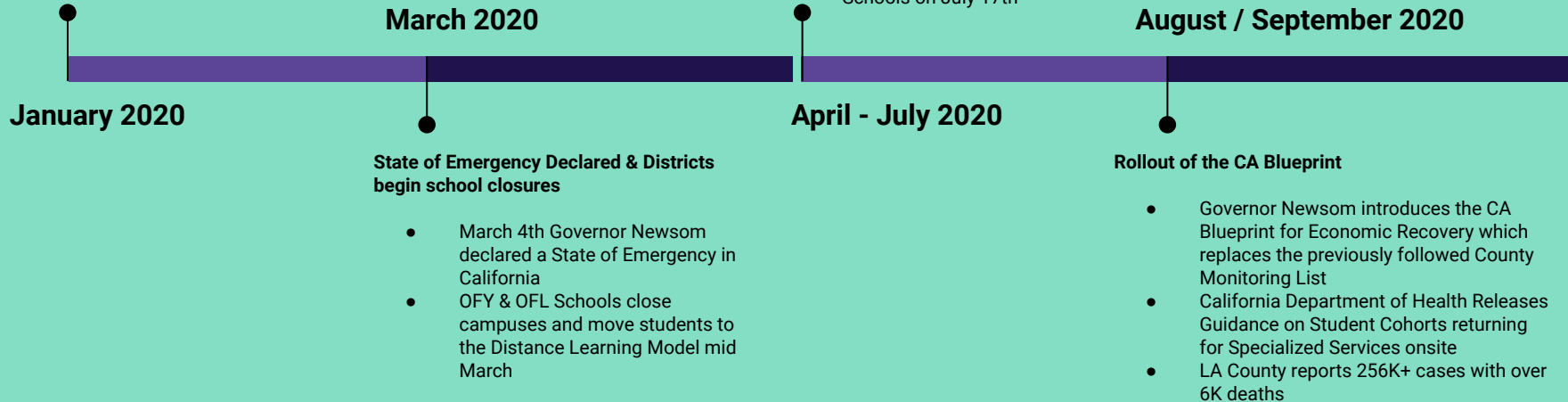
COVID-19 TIMELINE

1st Confirmed case of COVID-19 in California

- 1st cases of novel coronavirus confirmed in California in Los Angeles and Orange counties.
- First known case of person-to-person transmission taking place in February

COVID-19 Cases Continue To Rise

- Stay-at-Home orders extended & modified by County
- COVID-19 cases continue to rise locally with LA County reporting 100K+ cases in July
- Governor releases revised guidelines regarding reopening K12 Schools on July 17th



CA BLUEPRINT FOR A SAFER ECONOMY



Released August 28th by Governor Newsom

<https://www.gov.ca.gov/2020/08/28/governor-newsom-unveils-blueprint-for-a-safer-economy-a-statewide-strategic-and-slow-plan-for-living-with-covid-19/>



Color Based Tier System

<https://covid19.ca.gov/safer-economy/>



Replaces previously used County Monitoring List



Allows for Student Cohorts to receive Specialized Services onsite

CA BLUEPRINT

County risk level	New cases	Positive tests
WIDESPREAD Many non-essential indoor business operations are closed	More than 7 daily new cases (per 100k)	More than 8% Positive tests
SUBSTANTIAL Some non-essential indoor business operations are closed	4 - 7 daily new cases (per 100k)	5 - 8% Positive tests
MODERATE Some indoor business operations are open with modifications	1 - 3.9 daily new cases (per 100k)	2 - 4.9% Positive tests
MINIMAL Most indoor business operations are open with modifications	Less than 1 daily new cases (per 100k)	Less than 2% Positive tests

RULES OF THE FRAMEWORK

1. California Department of Public Health will assess indicators weekly on Mondays and release updated tier assignments on Tuesdays.
2. A county must remain in a tier for a minimum of three weeks before being able to advance to a less restrictive tier.
3. A county can only move forward one tier at a time, even if metrics qualify for a more advanced tier.
4. If a county's adjusted case rate for tier assignment and test positivity measure fall into two different tiers, the county will be assigned to the more restrictive tier.
5. City local health jurisdiction (LHJ) data will be included in overall metrics, and city LHJs will be assigned the same tier as the surrounding county
6. An LHJ may continue to implement or maintain more restrictive public health measures if the local health officer determines that health conditions in that jurisdiction warrant such measures.

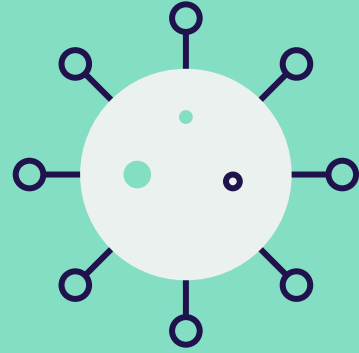
**Schools are eligible for reopening at least some in-person instruction following California School Sector Specific Guidelines once the county is out of Tier 1 (and thus in Tier 2) for at least 14 days*

COVID-19 INDUSTRY GUIDANCE: Schools and School Based Programs

<https://drive.google.com/drive/folders/1Jb2oiledA0GRwKwRzLCYR9FKQNeDcRli>

DESIGNATION BY COUNTY AS OF SEPTEMBER 15, 2020

Los Angeles		WIDESPREAD	
San Bernardino		WIDESPREAD	
Sacramento		WIDESPREAD	
Riverside		WIDESPREAD	
Ventura		WIDESPREAD	
Orange <i>Moved from Purple to Red as of 9/8</i>		SUBSTANTIAL	



COMPLIANCE OFFICERS



Compliance Officer Responsibilities

COMPLIANCE OFFICER RESPONSIBILITIES

- Establish and enforce all COVID-19 safety protocols
- Ensure that staff and students receive education about COVID-19 including proper handwashing, social distancing and face coverings
- Develop & implement system for conducting health prescreen with temperature checks for each individual entering the school
- Develop & implement tracking system to properly record daily occupancy to assist with contact tracing if needed
- Serves as a liaison to DPH in the event of a COVID-19 cluster or outbreak at the setting including but not limited to:
 - Providing DPH with the names and contact information of the case and identified contacts within 1 business day of notification of a confirmed case
 - Spearheading communication efforts with parents when an exposure or confirmed case has occurred
 - Assisting Taskforce members with investigation and contact tracing efforts as described in health officer order
- Create an **Exposure Management Plan** for all students and employees who are suspected to have COVID-19 or are quarantined because of exposure to case(s) at school to have access to testing or be tested for COVID-19
- Work with COVID-19 Taskforce to create a **Containment Response & Control Plan**
- Stay up-to-date with local conditions surrounding COVID-19
- Assist with Return to School plans for onsite learning



CONTAINMENT RESPONSE & CONTROL PLAN

CRC Guidance from LA County Department of Health

<https://drive.google.com/file/d/1E1UARotLjSq9XHxyU8yToP03euLrK-v/view?usp=sharing>

EXPOSURE MANAGEMENT PLAN



LA County Guidance for creating an Exposure Management Plan

<https://drive.google.com/file/d/1mrohanhldpuuPIX7KUtNFv2ioH4pFme/view?usp=sharing>

REPORTING POSITIVE COVID-19 CASE ONSITE

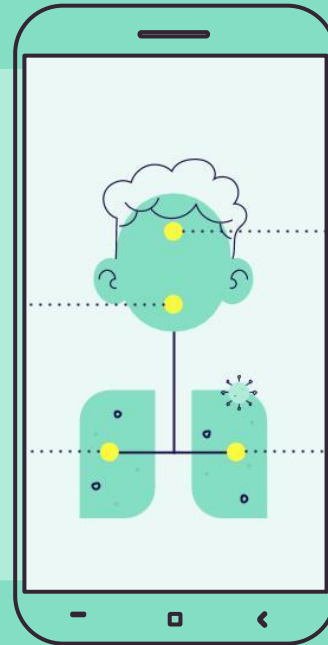
INTERNAL REPORTING SYSTEM

Staff can quickly report a positive COVID-19 case at their school site by filling out the form below

<https://alltechsi.formstack.com/forms/covid19>

This form will be sent to all necessary stakeholders in order to quickly set into motion all required communications and actions when a positive COVID-19 is identified onsite

This form is currently being edited based on recent Principal feedback and will be rolled out once approved



SPECIALIZED ONSITE SERVICES FOR SPED & EL STUDENTS

The California Department of Health issued guidance in early September regarding student cohorts.

<https://www.cdph.ca.gov/Programs/CID/DCDC/Pages/COVID-19/small-groups-child-youth.aspx#>

Cohorts specifics

- *Cohorts of no more than 12 students and no more than 2 teachers*
- Students within the cohort must require a specialized service
 - **Specialized services would be**
 - Services as outlined in a student's IEP
 - Educational support services as part of a targeted intervention strategy such as those related to English learner status
 - Educational or Medical assessments

Additional cohort facts can be found here

<https://drive.google.com/file/d/19uixywB6EQLidWnTmm39avG6kZPBzFkH/view?usp=sharing>

ADDITIONAL CONSIDERATIONS FOR SPECIALIZED SERVICES

01



Student cohorts should avoid mixing with other cohorts. Students should also limit movement throughout the school.

No more than 10% of your student population can be onsite at any given time



02

03



Consider use of outdoor space for services whenever possible

Submitting an attestation form will be required and will vary by county



04

RESOURCES

California School Sector Guidance

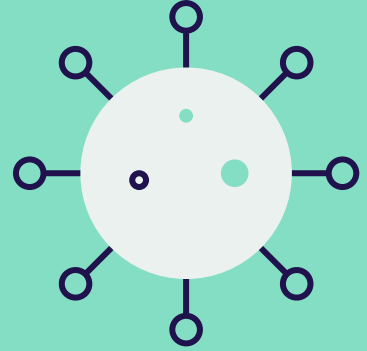
<https://drive.google.com/file/d/1DbMql8dXIm9k4E1KRjldC47Blpf2njDy/view?usp=sharing>

Reopening K-12 Schools

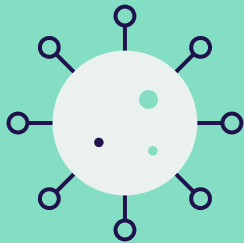
<https://drive.google.com/file/d/1E1UArotLjSq9XIHxyU8yToP03euLrK-v/view?usp=sharing>

Exposure Management Plan

<https://drive.google.com/file/d/1mrohanhldpuuPIX7KUtNFv2ioH4pFrne/view?usp=sharing>



THANKS!



CREDITS: This presentation template was created by Slidesgo, including icons by Flaticon, and infographics & images by Freepik

Please keep this slide for attribution