



PRODUCT CATALOG

HUNAN YOURCERA BIOTECHNOLOGY CO.,LTD.

Company profile



Hunan Yourcera Biotechnology Co., Ltd. specializes in the medical dental materials and dental equipment. The production line located in Shenzhen.

The company adheres to the principle of taking the technology as the foundation and with the purpose of lifelong service. Strive for the service beyond the customer's imagination. In order to provide customers with one stop services, we cooperate with 10 large-scale denture labs, dental hospitals and other institutions, and has been highly recognized by 90% of technicians and patients in product using and clinical application.

Products introduction

Yourcera high brand---MineSmile zirconia series products, Y-5A dental milling machine especially 3D multilayer series, have already occupied a certain market share in Turkey, UK, the United States, Mexico, Peru and other countries.

Yourcera product collection



Digital Dental Solution





Service style

Our original one-to-one customer service, one technician only serves customers from one area, so as to more accurately understand customer needs and provide solutions. This is the other companies do not have.



Agent model

Being our agent

there will be a senior manager with 15 years of foreign trade experience and 12 years of key customer service experience to serve you, provide you with the latest industry information and the most professional marketing guidance, all marketing materials have been design customized by the our professional designer for free.

If you are our end user, our well-known domestic expert help you solve various problems.

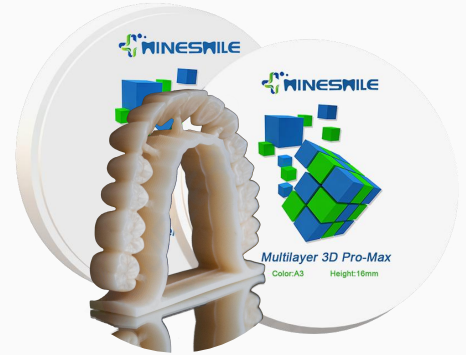




Model:MS-3D-M-P

Color gradient: 6 layers of natural color transition. Transparency gradient :From 43% transparency in incisal to 57% in cervical.
Strength gradient:Strength gradient from 1200Mpa to 800 Mpa.

Application:anterior,crown and 7 unit bridges.
Color:VITA 16.



Physical characteristics

Sintered density : $6.07 \pm 0.03 \text{g/cm}^3$

Hardness:1200HV

Sintering temperature:1500° C



Warm suggestion

Area:European countries,USA,Canada,and others

Size:98/95/92mm*10mm to 25mm

System:Open system,Amann Girrbach System,Zirkon zahn System



Parameter Model:MS-SHT-M/MS-UT-M

Advantage:No need further dyeing operation

Application:

SHT suggest for anterior,crown and bridges

HT suggest for full contour crown,bridge and anterior

Transmittance:SHT 46%,UT 49%

Color: 6 layers color



Physical characteristics

Sintered density : $6.07 \pm 0.03 \text{g/cm}^3$

Hardness:1200HV

Sintering temperature:1450° C to 1500° C

Bending strength:SHT \geq 900MPA.UT \geq 600MPA

Warm suggestion

Warm suggestion Area:European countries,USA,Canada,and others

Size:98/95/92mm*10mm to 25mm

System:Open system,Amann Girrbach System,Zirkon zahn System





White system

Model:MS-HT

Translucent:High 40%

Application:HT for coping,inlay,onlay,bridge and crown



Physical characteristics

Sintered density : $6.07 \pm 0.03\text{g/cm}^3$

Hardness:1200HV

Sintering temperature:Recommend
 1350°C

Bending strength:HT $\geq 1200\text{MPa}$

Model:MS-ST

Translucent:Super 43%

Application: ST for
crown,inlay,onlay,2-5 units bridges
and anterior

Color:VITA 16



Physical characteristics

Sintered density $6.07 \pm 0.03\text{g/cm}^3$

Hardness:1200HV

Sintering temperature:Recommend
 1350°C

Bending strength:UT $\geq 1200\text{MPa}$





Model: MS-UT

Physical characteristics

Sintered density $6.07 \pm 0.03 \text{g/cm}^3$

Hardness: 1200HV

Sintering temperature: Recommend 1350°C

Bending strength: $UT \geq 600 \text{MPa}$

Translucent: Ultra 49%

Application: UT for coping, inlay, onlay, anterior and veneer

Color: VITA 16



Warm Suggestion on the above three models

Area: Southeast Asia, some European markets

Size: 98/95/92mm*10mm to 25mm

System: Open system, Amann Girrbach System, Zirkon Zahn System

Yourcera zirconia block product line

24 hours delivery

Strength up to 1050MPa

Highest biological performance

Color layers much natural transition





Glass ceramic for CAD/CAM



Veneer



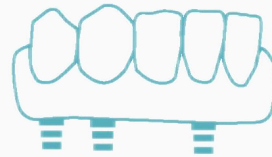
Anterior crown



Inlay



Full crown bridge



Full crown bridge

Lithium Disilicate product upgrade, which contains 100% biological microcrystalline glass, was crystallized at 1600°C by using platinum equipment with a purity of 99.99%. Our product has passed 10 biological tests in the Central Laboratory of Peking University Hospital of Stomatology, which indicates its safety and non-toxicity. Its quality complies with ISO6872 international guidelines. The flexural strength and the fracture toughness are 65% and 148% higher than the industry average, respectively.

PMMA WAX PEEK material



CAD/CAM 95ZZ System

Item	Model	Size
1	95ZZ	10
2	95ZZ	12
3	95ZZ	14
4	95ZZ	16
5	95ZZ	18
6	95ZZ	20
7	95ZZ	22
8	95ZZ	25

CAD/CAM 98 System

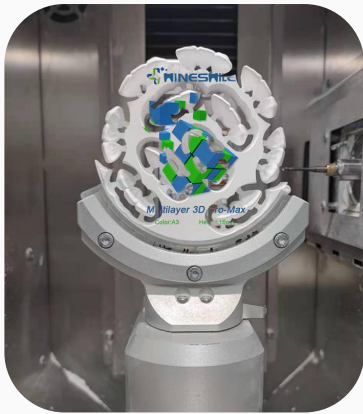
Item	Model	Size
1	98OP	10
2	98OP	12
3	98OP	14
4	98OP	16
5	98OP	18
6	98OP	20
7	98OP	22
8	98OP	25

CAD/CAM AG System

Item	Model	Size
1	Ag system	13
2	Ag system	16
3	Ag system	20



5-Axis Dental Milling Machine



Y-5A+ technology paramater	
Size	Cutting machine: 550x565x460mm
	Main machine: 450x250x450mm
Net Weight	Cutting machine: 95KG
	Host: 20KG
Rotation angle	A: 360° B: ±30°
Power	0.8kw
Milling precision	0.2mm
Tools Library	5
Tool specifications	Special tools with a handle diameter of 4mm, automatic tool change and automatic tool detection.
Processing method	five-axis linkage, manual milling
Machinable type	inner crown, full crown, bridge, planting bridge, temporary restoration of crown post and core, inlay, bolt, telescopic
Maximum Speed	0-60000rpm
Rated working pressure	4.5-6.0bar (no oil and no water)
Installation conditions	Stable voltage: 220-230V stable pressure > 6.0bar Humidity: 1 5-3 5 °C Relative humidity <80%
Transmission interface	USB/Ethernet (rear USB connector, wire connector)
Mill material	Zirconia, wax, resin, composite materials

Application

Milling for Zirconia /PMMA/Wax

Process Time: Zirconia Blocks 6min,PMMA 8min,Wax3min

Material size:98*10-25mm

Main Advantage

CAM programme automation and data management

Automatic identification of toolpaths to improve production efficiency.

Fast and convenience, change the tools automatic and with three tools position

Can cut 16 units bridges with fast speed and high precision

Can be processed by turning angle to get a lot of undercuts.but others can not.



Five-axis wet milling machine

Model:Y-5W

1. Separate Machines --- Easy after-sales service.
2. Can process restorations with certain bevels.
3. Support for implant upper crown opening.
4. Built-in cold water tank and filter pump, saving space.



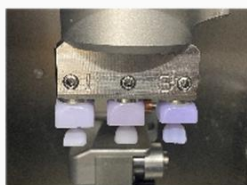
Y-5W Technology Paramater	
Size	485x525x458mm
Net Weight	75KG
Rotation angle	A: 360° B: ±20°
Power	0.5kw
Milling precision	0.2mm
Tools Library	6
Tool specifications	Special tools with a handle diameter of 4mm, length 45mm, automatic tool change and automatic tool detection.
Processing method	five-axis linkage, manual milling
Machinable type	upper implant restorations, three units bridges of zirconia and
Maximum Speed	0-60000rpm
Rated working pressure	4.5-6.0bar (no oil and no water)
Installation conditions	Stable voltage: 220-230V stable pressure > 6.0bar Humidity: 10-30 °C Relative humidity <80%
Transmission interface	USB/Ethernet (rear USB connector, wire connector)
Mill material	Glass-ceramic, Urethane porcelain, Amber porcelain, PMMA resin material, Zirconia for shaft and shank, preformed

Main Advantage

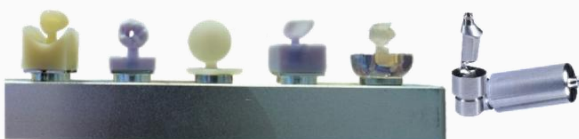
1. Equipped with detachable tool holders
Easy to replace different types of knives.



2. Combination equipment of different fixtures, so can process various materials.



3. Cutting accuracy up to 0.02mm
Automatic tool changer
Automatic tool length detection
Automatic tool wear compensation



3D Printer

Model:Y-2P

①The Y-2P is a small 3D printer dedicated to dentistry with high resolution. It is a low cost and easy to maintain 3D manufacturing system designed to produce high quality dental models.

②It is an economical product with high moulding accuracy, long life of the LED light source, distortion-free light projection technology and image greyscale processing and low purchase costs.



Product parameters	
Machine size:	432X292×456mm
Package size:	535X390X540mm
Printing size:	192×120X100mm
XY axis accuracy:	47μm
Print speed:	1-4s/layer, 30mm/h
Print layer thickness:	0.025-0.1mm
Touch screen:	5-inch color touch screen
Support consumable types:	405nm wavelength photosensitive resin, compatible with third-party resins
Resolution:	3840*2400
Z-axis type	double linear guide + ball screw
LCD screen life:	2000 hours
Anti-aliasing:	8 times anti-aliasing
N.W.:	19 KG
G.W:	21 KG
Support system :	Windows7/8/10 X64,MAC,OS
Language:	Support 12 languages,give priority to Chinese and English



Intraoral Scanner

Mode:S6000 Scanner



Technology : Video Type Overall

Size(LxWxH) :216x40x36 mm

Weight :350g

Tips : 3 Different,

Autoclavable Tips Size:(LxWxH) 83.4x19.6x14.6 mm

Field of View :17x15 mm

Depth of Field : 15 mm

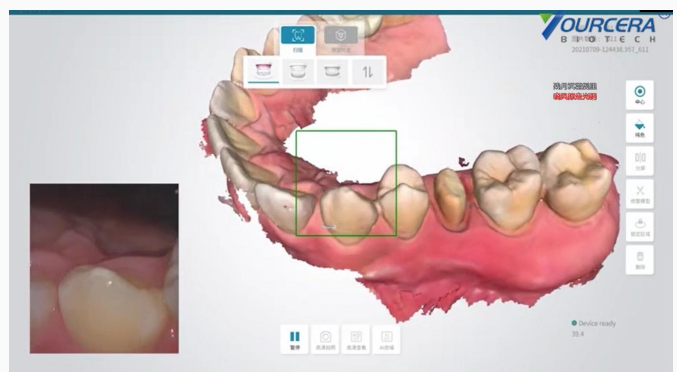
Data Format : STL, PLY, PTY

Digital Interface : USB 3.0

Full Jaw Scanning Time: <5 min

Application

Oral restoration, Orthodontics, Implantation.



Main Advantage

- 1.Scan without powder spraying and improve patient comfort.
- 2.Quick feedback the corresponding three-dimensional data which can appear on the computer immediately after scanning, so that doctors and patients will be the first time resolve the situation in the mouth.
- 3.This product has ultra-high precision, and the scanned data can be sent directly to processing plant for design and finish the denture.

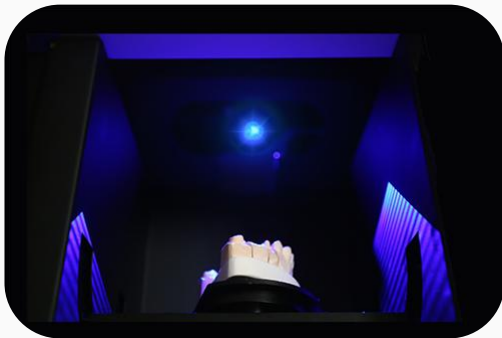
Scanner

Model:Y-2S



Type	Specification
Dimension	300*290*425(mm)
Wight	12KG
Scan range	100*80*80(mm)
Scan method	Non-contact automatic scanning
Camera	2*5MP
Projection	Custom made
Interface	2*USB3.0
Closure	No door
Power supply	AC100-220V50HZ
Operating temperature	0-45X7
Precision	Less than 10 microns
Speed	Dental arch-30S;generation type 35S
Output format	STL,UM
Compatible design software	3Shape>EXO、 Zbrush>jewelcad

Main Advantage



Custom projector
LED
Low heat, high stability
30000 hours service life
Cold light, strong anti-interference; surface
projection, fast scanning speed.
No door required, easy to operate and easy to clean

Speed

Single scan time: 1.5s
Occlusal scan: 14s
Full dental arch scan: 30s
Abutment scan: 35s
The entire upper and lower dental molds
are scanned completely: 120s



Sintering furnace



Technical Parameters	
Chamber size	100mm*100mm (Dia*H)
Max temperature	1700°C(<2 hours)
Working temperature	1600°C
Temperature control	50 segments programmable and auto control
Thermocouple	B Type
Temperature	±1 °C
Power	2kW
Net Weight	75kgs
Shape size	420mmx570mmx825mm



Features

F-6 is specially designed for the sintering of small batch samples of zirconia denture crystal, structural ceramics and polymer ceramics.

The rated power is only 2kW which is suitable for any small lab.

High speed temperature increasing, 0-40° C/min.

7 inch HD touch screen, easy to operate, can store 30 different processes, programs.

5pcs Mosi2 is heated in a ring shape, higher furnace temperature uniformity.

Max temperature: 1700°C, Working temperature: 1600°C

Automatic program for heating, platform moving. It's very convenient for dental crown firing.

1 year warranty. The whole machine is guaranteed for one year.



Milling Burs

1. German super fine grain carbide material.
2. Advanced five-axis or more CNC grinding machines.
3. Performance is improved 5 times compared with other Burs.



Roland

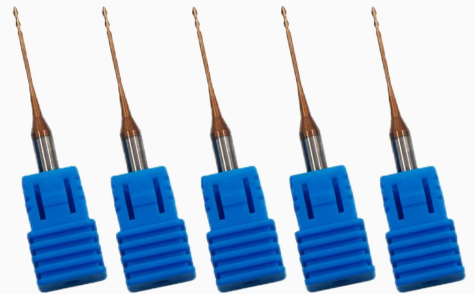


IMES ICORE

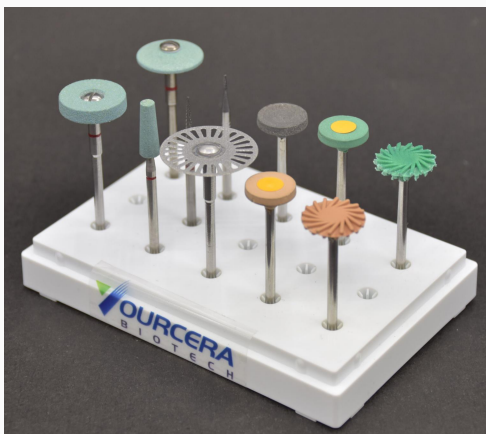


VHF K4/K5

- Stable quality
- High precision
- Wear resistant
- Sharp cutting edge
- High machining efficiency
- Good chip removal performance



Polishing System



- Highly concentrated diamond grits ensure efficiency.
- Special formula provides long service and odorless operation.

Enterprise Certification



Our Dental Lab

Our R & D department





Why choose us.....



Saving time---1 to 1 customer service model



Saving cost---High level materials, mid-range price



Zero risk being distributor---Supply all the promotion materials free



Enjoy vip treatment---Every customer will be our VIP customer

Our distributor





What we promise you

If not satisfy with our products,we promise you

- 1.All products warrantly two years.
- 2.Refund your money within one month.
- 3.Change new products within one year.



LEARN MORE.....

Contact Us Now



Hunan Yourcera Biotechnology Co.,Ltd.
Add:No.373,No.709-53,Ziwei Building,Changsha city, China.
Tel:0086 186 7483 8815
Emile:info@yourcera.com
[Https://yourceradental.com/](https://yourceradental.com/)