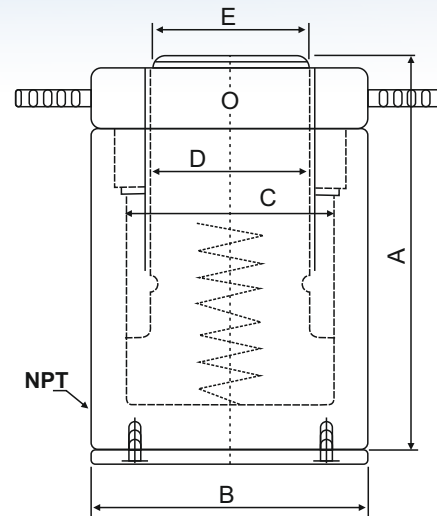


## Aluminium General Purpose Cylinders - Threaded Ram with Safety Lock Nut, Single Acting (Type - Spring Assisted Return)

Capacity 20 - 200 ton | Stroke 150 mm | Max. Operating Pressure 700 kg/cm<sup>2</sup>



### Features / Applications

- 50% lighter than steel Cylinder of comparable capacity
- All sub-assemblies are hard anodised
- Suitable for vertical or horizontal application requiring sustained load holding for longer duration where portability is a priority
- 5,000 duty cycles
- Base mounting holes are optional

### ⚠ Caution

Cylinder manufactured from lightweight Aluminium alloy, have lower fatigue life due to material properties & should NOT be used in high cycle application.

### S Spring return T Threaded ram

Rated Capacity ton	Capacity@ 700 kg/cm <sup>2</sup> kN	Stroke mm	Model	Oil Capacity cm <sup>3</sup>	Weight (Approx.) kg	'A' Closed Height mm	'B' Cylinder OD mm	'C' Bore Diameter mm	'D' Bore Diameter mm	'E' Saddle Diameter mm
20	218	150	VAST 20-150	468	4.8	295	85	63	55	48
30	309	150	VAST 30-150	663	6.5	300	100	75	60	55
50	550	150	VAST 50-150	1178	13.5	335	135	100	80	75
100	1078	150	VAST 100-50	2309	30	375	190	140	110	103
150	1589	150	VAST 150-150	3405	48	405	230	170	140	133
200	2199	150	VAST 200-150	4712	69	430	270	200	160	152

**Note : Spherical Saddle & Base Mounting Holes are optional on request**

- Equipment to be operated by a trained personnel.
- Safe Practice! Use 80% of the rated Capacity and Stroke.
- Customized solutions on request.
- Specifications are subject to change for continual improvement.



View Pumping Units and Accessories Section for more details

