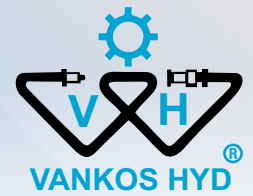


VDPS

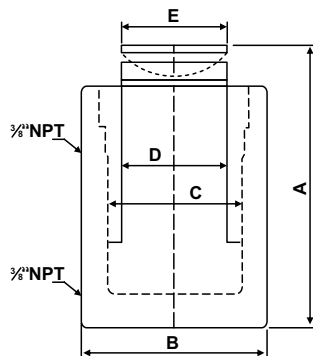


MULTIPURPOSE CYLINDERS - PLAIN RAM, DOUBLE ACTING, SPHERICAL SADDLE (TYPE - OIL RETURN)

CAPACITY 50 - 2000 TON | STROKE 150 - 300 MM | MAX. OPERATING PRESSURE 700 KG/CM²

FEATURES / APPLICATIONS

- Suitable for general lifting & push-pull application, Pile load testing, box pushing, ship lifting & hydraulic presses etc.
- **Spherical saddle** reduces damage to Cylinder against off-center load
- **Safety Pressure Relief valve in return port prevents damage, in case of accidental over-pressurization due to blockage in return line.**
- Base mounting holes & collar threads are optional.



TECHNICAL DIMENSIONS

Rated Capacity ton	Capacity@ 700 kg/cm ² kN	Stroke mm	Model	Oil Capacity cm ³	Weight (Approx.) kg	'A' Closed Height mm	'B' Cylinder OD mm	'C' Bore Diameter mm	'D' Ram Diameter mm	'E' Spherical Saddle Dia. mm
50	550	150	VDPS 50-150	1178	27	320	130	100	70	74
50	550	300	VDPS 50-300	2355	41.	470	130	100	70	74
75	792	150	VDPS 75-150	1697	40	330	155	120	90	88
75	792	300	VDPS 75-150	3393	56	480	155	120	90	88
100	1077	150	VDPS 75-300	2309	55.5	335	180	140	110	100
100	1077	300	VDPS 100-150	4617	78.5	485	180	140	110	100
150	1589	150	VDPS 100-300	3405	88	350	220	170	140	130
150	1589	300	VDPS 150-150	6810	124	500	220	170	140	130
200	2199	150	VDPS 150-300	4713	122	375	255	200	150	150
200	2199	300	VDPS 200-150	9426	166	525	255	200	150	150
250	2661	150	VDPS 200-300	5702	158	395	280	220	180	165
250	2661	300	VDPS 250-150	11403	216	545	280	220	180	165
300	3167	150	VDPS 250-300	6786	200	410	310	240	180	180
300	3167	300	VDPS 300-150	13572	266	560	310	240	180	180
400	4008	150	VDPS 300-300	8589	273	435	350	270	220	212
400	4008	300	VDPS 400-150	17178	364	585	350	270	220	212
500	4948	150	VDPS 400-300	10604	385	465	400	300	240	230
500	4948	300	VDPS 500-150	21207	485	615	400	300	240	230
600	5987	150	VDPS 500-300	12830	473	495	430	300	270	260
600	5987	300	VDPS 600-150	25659	610	645	430	330	270	260
800	7939	150	VDPS 600-300	17012	680	530	505	380	300	290
800	7939	300	VDPS 800-150	34023	865	680	505	380	300	290
1000	9930	150	VDPS 800-300	21279	896	560	560	425	350	330
1000	9930	300	VDPS 1000-150	42558	1130	710	560	425	350	330
1500	15154	150	VDPS 1000-350	32472	1542	620	705	525	420	400
1500	15154	300	VDPS 1500-150	34944	1957	770	705	525	420	400
2000	20458	150	VDPS 1500-300	43838	2360	705	810	610	525	495
2000	20458	300	VDPS 2000-150	87675	2879	855	810	610	525	495

Note : Maximum Tilt Angle 5° | Collar Threads with Base Mounting Holes are on request

- Equipment to be operated by a trained personnel.
- **Safe Practice! Use 80% of the rated Capacity and Stroke.**
- Customized solutions on request
- Specifications are subject to change for continual improvement.

View Pumping Units and
Accessories Section for
more details

