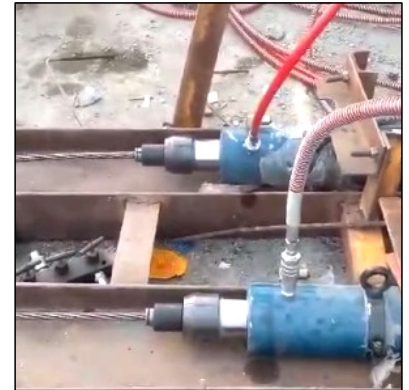


VSRG

MONO STRAND STRESSING JACKS - REAR GRIPPING

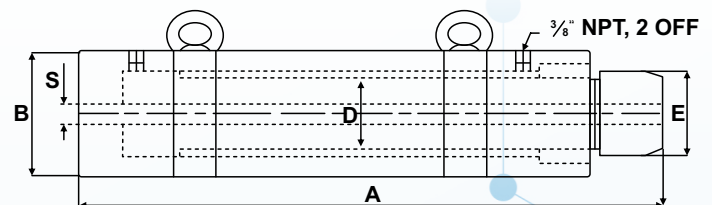
CAPACITY 10-25 TON | STROKE 500-1000 MM | MAX. OPERATING PRESSURE 600 KG/CM²



FEATURES / APPLICATIONS

- Suitable for long stroke stressing of strand sizes of 12.7 mm/0.5" and 15.2mm/0.6" in a single pull
- Used for stressing and pulling sliders / segments, machine parts and heavy fabrication
- Safety Pressure Relief Valve in return port prevents damage, In case of accidental over-pressurization due to blockage in return

Technical Dimensions



Rated Capacity ton	Capacity@ 700 kg/cm ² kN	Stroke mm	Model	Strand Arrangement inch		Oil Capacity cm ³	Weight (Approx.) kg	'A' Closed Height mm	'B' Cylinder OD mm	'S' C'hole Diameter mm	'D' Ram Diameter mm	'E' Spherical Saddle Dia. mm
10	100	500	VSRG 10-500	0.5	0.6	1885	34	770	100	20	60	75
25	255	750	VSRG 25-750	0.5	0.6	3475	110	1046	125	20	80	95
25	255	1000	VSRG 25-1000	0.5	0.6	4630	146	1295	125	20	80	95

POWER PACK SPECIFICATION

Power Pack Model	Pump Stage	Motor HP/Phase	Filling Capacity liters	Pump flow l/min	Max. operating pressure kg/cm ²	Weight (Approx.) kg	Operation
OPU007.5008-2W	Single	7.5 / Three	80	2.6+2.6	600	190	Hand Lever DCV

Note : Maximum Tilt Angle 5°

- Equipment to be operated by a trained personnel.
- Safe Practice! Use 80% of the rated Capacity and Stroke.
- Customized solutions on request
- Specifications are subject to change for continual improvement.

