

ORIG 128 ... 9647

*Condominium
Book***C****SECOND AMENDMENT TO DECLARATION OF
CONDOMINIUM OF
BAYOU ROUGE CONDOMINIUM****0****STATE OF LOUISIANA
PARISH OF EAST BATON ROUGE**BE IT KNOWN, that on this 8th day of March 1984;

BEFORE ME, R. Keith Colvin, notary public, duly commissioned and qualified in
and for the Parish and State aforesaid, and in the presence of the undersigned competent
witnesses personally came and appeared:

213
1

BAYOU ROUGE DEVELOPMENT, a joint venture created by
Joint Venture Agreement dated July 22, 1982, filed with the
Secretary of State on August 12, 1982 a copy of which
agreement is on file in the office of the Clerk and Recorder of
East Baton Rouge Parish, as original 267, bundle 9515, which
Joint Venture Agreement was amended by First Amendment to
Joint Venture Agreement of Bayou Rouge Development, dated
September 22, 1982, a copy of which amendment is on file in
the office of the Clerk and Recorder of East Baton Rouge
Parish, as original 46, bundle 9523, herein represented by
LARRY WALSH HOMES, INC., appearing through and
represented herein by LARRY L. WALSH, President, by virtue
of a resolution on file and of record in the office of the Clerk
and Recorder of East Baton Rouge Parish, Louisiana, as
original 209, bundle 9523, and CAPITAL FINANCIAL
CORPORATION, appearing through and represented by O. M.
THOMPSON, III., its Vice President, by virtue of a resolution
on file and of record in the office of Clerk and Recorder of
East Baton Rouge, State of Louisiana, as original 553, bundle
9508; and original 147, bundle 9429.

who declared unto me, Notary that:

Whereas, Declarant wishes to avail itself of the provisions of Article VIII of the
Declaration of Condominium of Bayou Rouge Condominium, recorded at Original 846,
Bundle 9594, as amended at Original 85, Bundle 9632, in the
office of Clerk and Recorder for the Parish of East Baton Rouge, Louisiana, by amending
the Declaration of Condominium and including within the Condominium certain units and
buildings as more specifically set forth herein;

D

NOW THEREFORE,

Declarant warrants and certifies as follows:

- 1) The inclusion of units and buildings in the Condominium as provided herein is in complete conformity to the requirements of the Act and Article VIII of the Declaration;
- 2) The buildings and units included in the Condominium as provided herein are completed and ready for occupancy and were constructed in substantial conformity with the Building Plans and Specifications attached as Exhibit "B" to the Declaration; and
- 3) The adjustments of each unit owners' percentage ownership in common elements, percentage sharing of common surplus and common expenses, and respective voting rights in the association as provided herein are based upon the proportion that the floor space of each unit bears to the total floor space of all units in the Condominium as modified herein;

The Declarant hereby amends Exhibit "A" attached to and made a part of the Declaration by substituting therefore the Exhibit "A" attached to and made a part of this Amendment to Declaration.

Declarant hereby amends the Declaration by including within the Condominium Building No. 6 and Building No. 7 and Units 61, 62, 63, 64, 65, 66, 67, 68, 71, 72, 73, 74, 75, 76, 77 and 78, as shown on the attached Exhibit "A."

Declarant hereby amends Exhibit "F" attached to and made a part of the Declaration by substituting therefore the Exhibit "F" attached to and made a part of this Amendment to Declaration.

The effective date of this Amendment of Declaration shall be the date of recordation of the Amendment of Declaration in the office of Clerk and Recorder for the Parish of East Baton Rouge, Louisiana.

In all other respects the Declaration of Condominium of Bayou Rouge Condominium referred to above shall remain in full force and effect.

THUS DONE AND SIGNED, in my office at Baton Rouge, Louisiana this 8, day of March, 1984, in the presence of the undersigned witnesses.

WITNESSES:

BAYOU ROUGE DEVELOPMENT

BY: *Larry Walsh*
LARRY WALSH HOMES, INC.

Michael L. Clark

BY: *Michael L. Clark*
CAPITAL FINANCIAL CORPORATION

R. Keith Colvin
NOTARY PUBLIC
R. KEITH COLVIN
STEEN, RUBIN, CURRY, COLVIN & JOSEPH
SUITE 1400, ONE AMERICAN PLACE
BATON ROUGE LA 70825
(504) 383-1400

BAYOU ROUGE CONDOMINIUM

31-319784

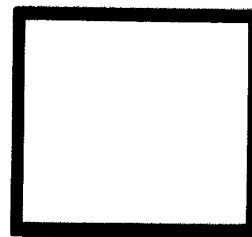
ORIG 128 FILE 9647

MAP

Original 128 Bundle 9647

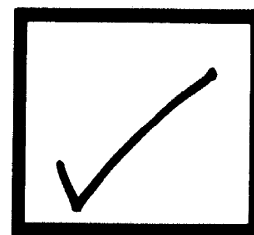
OF THE MAP RECORDS

RECORDED
PLAN MAP



AND

RECORDED
ATTACHED MAP



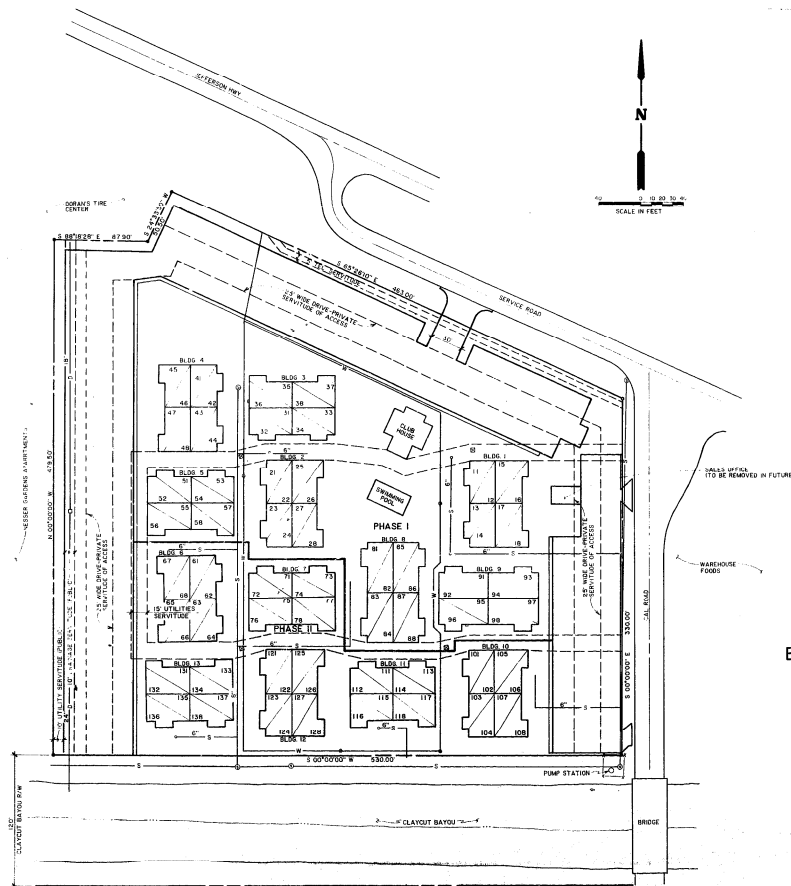
Date Recorded 3-8-84

H. M. MIKE CANNON
CLERK OF COURT
EAST BATON ROUGE PARISH
BATON ROUGE, LOUISIANA

128 9647

ATTACHMENTS

* - PROPERTY CORNER (FMDI)
 ○ - PROPERTY CORNER (END FMDI)
 ⊕ - ELECTRICAL TRANSFORMER
 ⊙ - SANITARY SEWER MANHOLE
 ⊖ - WATER VALVE
 ○ - SEWER CLEANOUT
 ⊖ - DROP INLET
 —●— - SANITARY SEWER
 —○— - DRAINAGE PIPE
 ——— - WATER LINE (4")



OF
BAYOU ROUGE CONDOMINIUMS
 BEING TRACT "B-1" OF A RESUBDIVISION OF TRACT "B"
 AND LOCATED IN SECTION 70, T75-R1E, G.L.D. OF LA.
 EAST BATON ROUGE PARISH, LA.
 FOR
LARRY WALSH HOMES, INC.

DOMINGUE, SZABO & ASSOCIATES, INC.