

TECHNICAL DATASHEET

Re: "**Compact-2**", envelopes folding and gluing machine.

New flexible, short-run envelope production system, made in Italy, designed to produce:

1. Envelopes and pockets for a wide size range
2. Simple folders with one or two pockets
3. Folders and presentation folders with large document pockets
4. DVD/CD Wallet
5. Double-sided tape application on the seal flap in a single passage by 90° rotation system "Vertigo".

The equipment we offer is produced under exclusive license, trademark "APR SOLUTIONS®".



** The picture shown are for illustration purpose only. Actual product may vary due to product enhancement and configuration.*



"Compact-2", envelopes folding and gluing machine.

The "Compact-2" envelope production system is the perfect solution for those commercial printers, direct mailers, on-line print and envelope distribution businesses and manufacturers looking for a highly flexible, short-run production better suited for rapidly changing customer demand and job mix.

Features:

- Fast and accurately feed especially at high speed
- Removes all limitations of traditional feeders
- Allows to work with very small formats
- Quick and ensured perfect alignment of every product as it enters the machine
- Reduced waste and time
- Envelopes and pockets for a wide size range
- Ideal for converting pre-printed or blank die-cut and pre-creased envelopes

Technical specification:

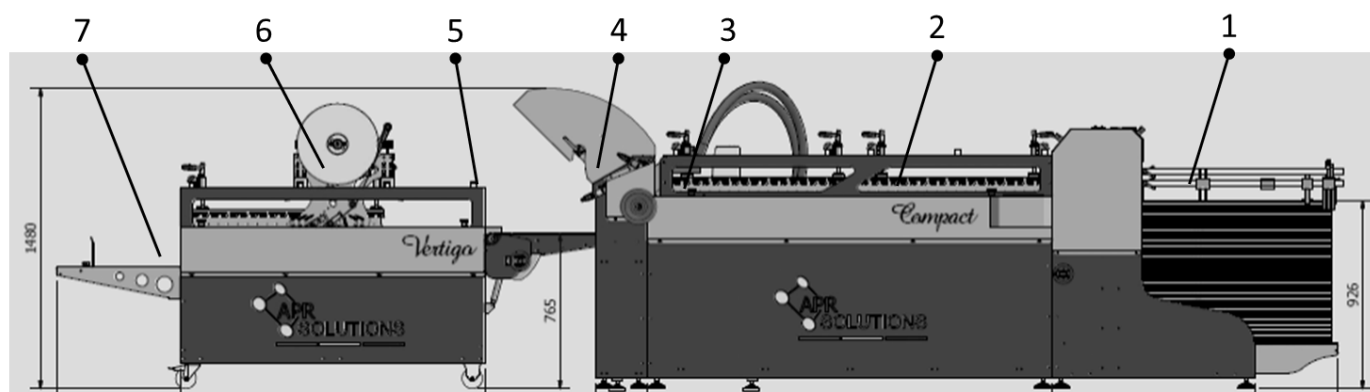
Type		
Introduction format	max. open format	720 x 1020 mm
	min. open format	150 x 150 mm
Paper weight		80 g/m ² - 300 g/m ²
Size ranges envelopes	max. closed format	550 x 720mm
	min. closed format	80x150mm
Maximum mechanical speed		120 m/min
Power requirement		400 V - 3 phase + N + E - 50 Hz
Connected power		2 Kw
Compressed air		8 BAR with a ½ inch connection
Machine dimensions	Length	6.287 mm
	Width	1.750 mm
	Height	1.480 mm



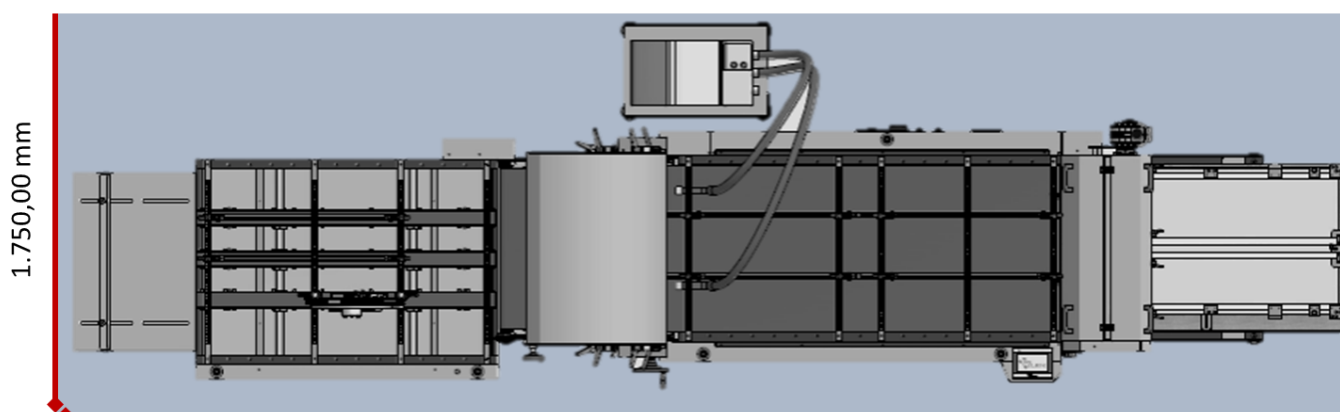
Machine layout components

(Standard configuration)

1. Full-automatic high pile feeder
2. Side flap folding section ready to add hot melt gluing system and double-sided tape
3. Hot melt gluing system with 2 guns for side flap closing
4. Folding buckle plate with one pocket
5. “Vertigo” automatic delivery table with 90° rotation unit
6. No.1 “RAP” double sided tape applicator
7. Delivery



6.286,50 mm



6.286,50 mm



1st - High pile feeder

This type of feeder is particularly suitable for working with light paper from 80 g/m².

- Suction system from above
- No. 4 air blowers on all sides of the paper
 - o No. 1 movable rear air blower and no. 2 movable side air blowers
 - o No. 1 fix front air blower
- Double sheet trip device with thickness adjustment
- Sheet gap controller device

2nd - Folding flap group for the application of hot melt glue and double-sided tape

- No. 3 Special register table width 70 mm each.
- No. 4 transport devices Bruco with wheels on register table.
- No. 6 Special plough tools for 2 side tabs (3 left side and 3 right side)
- Tab sides plough folding: from 15 to 40 mm
- N. 1 photocell
- Ready for hot melt and cold gluing system

3rd - Hot melt gluing Robatech system

- Electronic system to control the glue application.
- Glue melting tank of 4 kg.
- Temperature controller.
- No. 2 applicator guns.
- No. 2 hoses (+/- 1,5 mt.).
- Connected power 5,8 kw.

4th - Folding buckle plate with one pocket

- Folding head with 4 large diameters (60 mm) folding rollers with quick released detachable segmented rollers, in anti-stain rubber.
- Possibility of 1 parallel fold, up to 300 g/m² on short grain direction.
- No. 1 Buckle plate unit for parallel folds.
- Noise protection hood on upper buckle plate unit.
- No. 1 folding buckle plate with movable ribs.
- Folding in buckle plate: Min 80 mm. Max 550 mm.
- No. 1 large deflector for paper exit.
- Roller calliper settings.



5th - “Vertigo” automatic delivery table with 90° rotation unit

- Independent and height adjustable table with high capacity belt
- Speed up and down by selector bottom
- Special 90° rotation system
- Side alignment before the application of double-sided tape or tear tape
- Introduction format: Min. 200 x 110 mm
- Max. 700 x 500 mm
- Max. mechanical speed: 100 m/min
- No. 1 transport belt
- No. 2 pressure adjustable top drive wheel sets “BRUCO”
- No. 1 Rap, double-sided tape applicator
- Ready for no.1 Rap Strip, tear tape applicator

6th – “RAP” double-sided tape applicator

Type	
Tape width (Min-Max)	From 9 mm to 25 mm <i>on request up to 50 mm and 100 mm</i>
N. of application	from 1 to 5
Max length tape applicable	999 mm <i>on request up to 9999mm</i>
Min. distance between application and the next in line	25mm
Min. length application of the tape	35mm
Min. distance of the tape from the edge of the paper	10mm
Min. distance of the tape from the edge of the cardboard	0mm
Max outer diameter roll tape	480 mm
Internal diameter roll tape	76 mm
Margin of error in application	± 1 mm
Max Mechanical Speed	120 m/min
Power connection	Pneumatic system

7th – Delivery box

Collection box with a side alignment for easy delivery of the sheets.

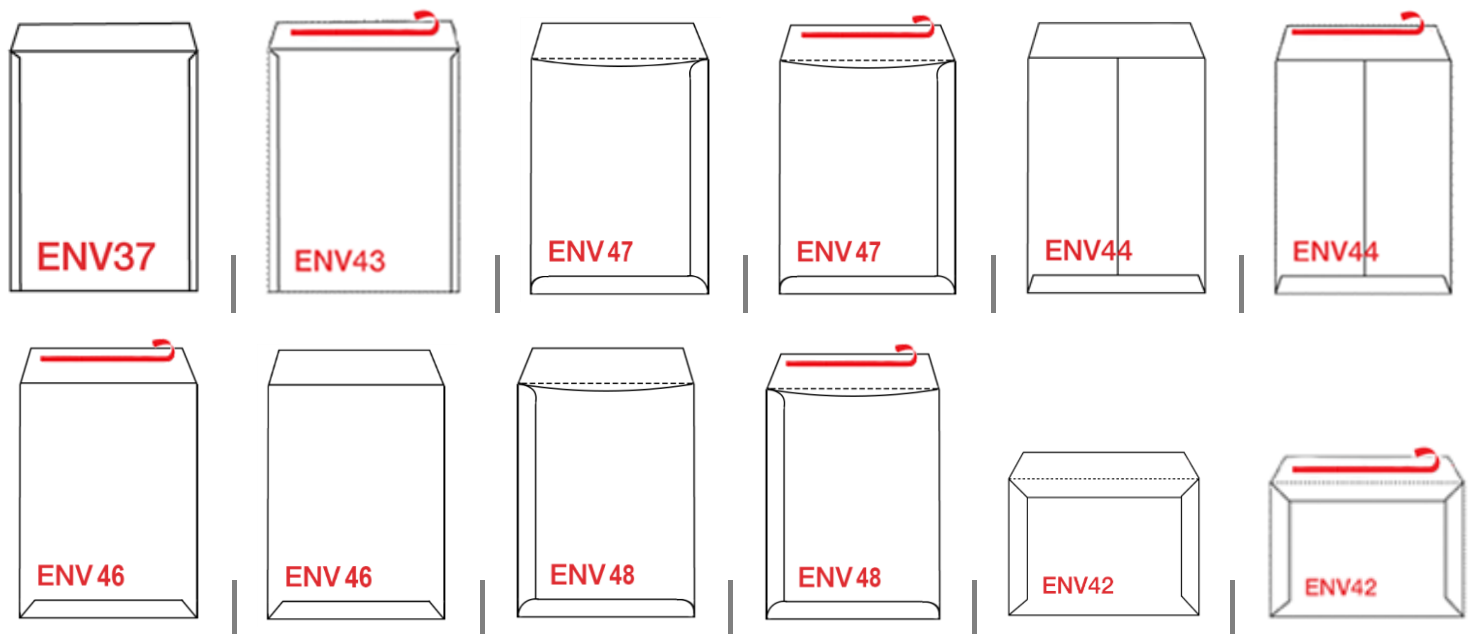


Some products that can be realized with the “Compact-2” machine

Envelopes



Booklet Style | 2 side flaps | inside side seam | outside side seam | double sided tape

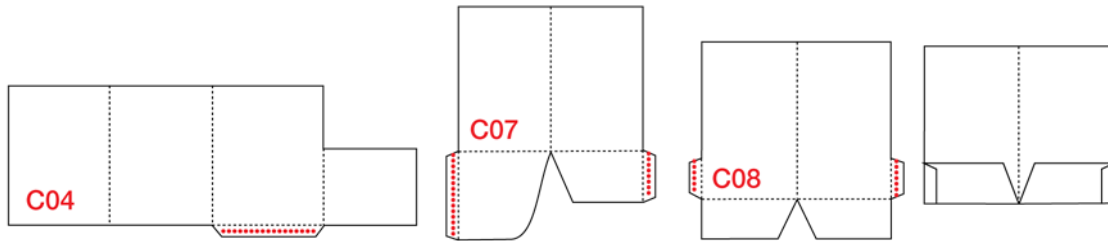


Pockets and wallets | side seam right/left hand side | centre seam | 2 side flaps | double sided tape

1. Maximum size width in respect to the width of the side flaps
2. Application of double-sided tape in-line on straight flap
3. Blank or printed envelopes, already pre-creased and die-cut
4. Window equipment not available. Window must be applied in advance.

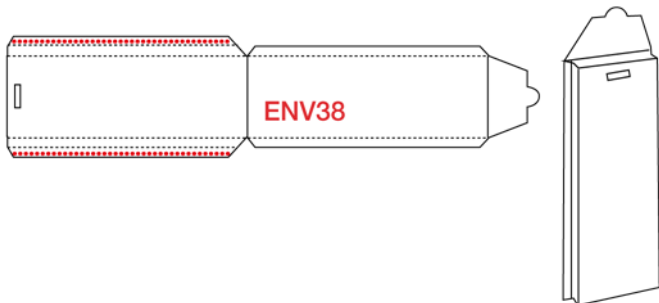


Folders & Presentation folders



Optional on request

- | | |
|---|---------------|
| 1. Special “RAP” kit for double sided tape thickness of 4mm | Euro 800,00 |
| 2. Kit to make envelopes/pockets with gussets | Euro 2.800,00 |



All performance data published, and possible jobs refers to the production of a defined reference product under certain circumstances reflecting a possible practice of use. The performances achieved in practice depend on a multitude of parameters which are beyond our control. This includes, amongst other factors, the condition and type of the raw materials to be processed, the shapes of the products, the air humidity and the ambient temperature. Apr Solutions reserves the right to make design changes to the performance values.

