

# DORSET COP

---





WELCOME

Admiral Prof. Neil Morisetti  
University College London



KEYNOTE

Poppy Maltby  
REGEN



## **Decarbonising Dorset**

A potential leader... with a long way to go

Poppy Maltby, Head of cities and regions

September 2023

An independent centre  
of energy expertise,  
with a mission to  
transform the energy  
system for a

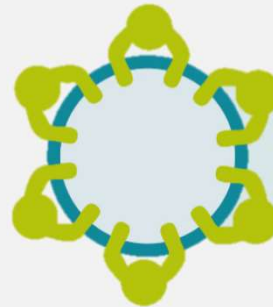
zero carbon  
future.



Experts

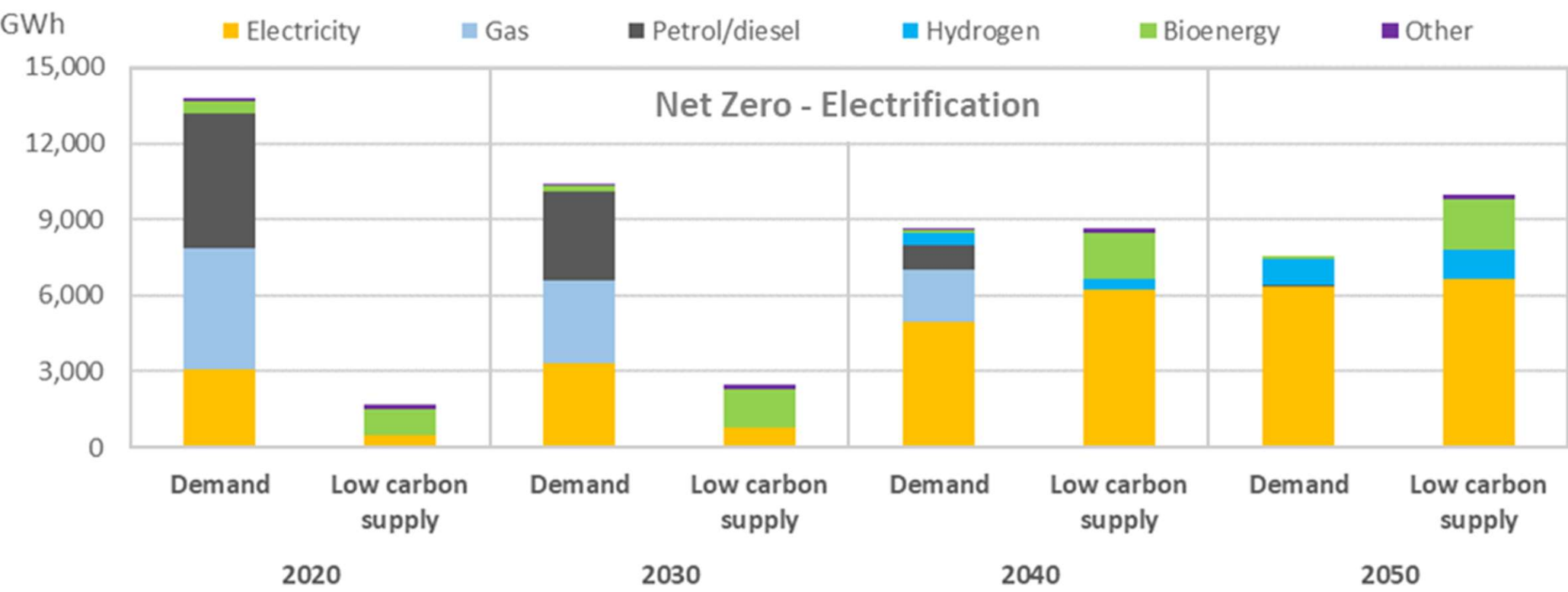


Pioneers



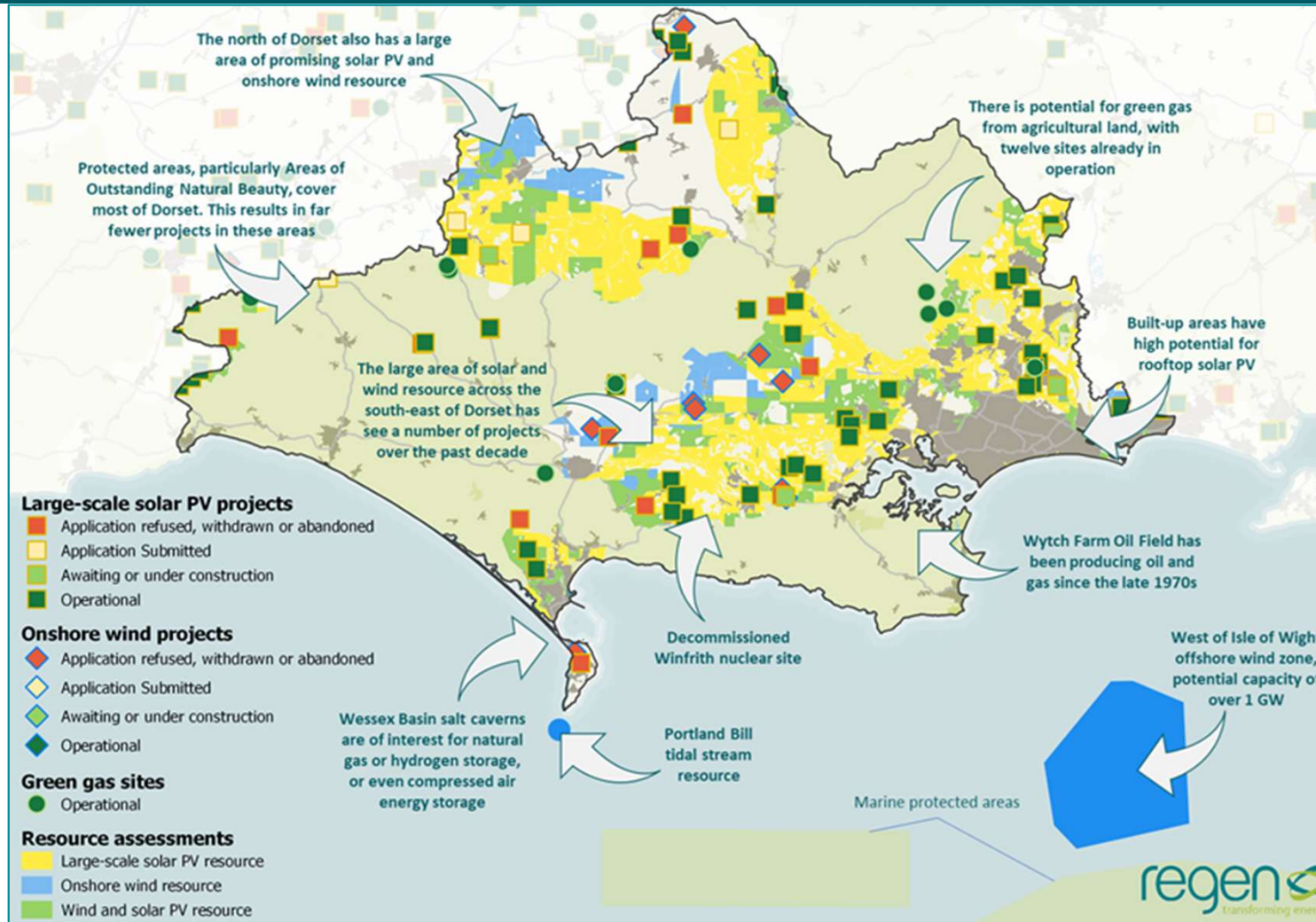
Convenors

# Energy demand and supply to 2050





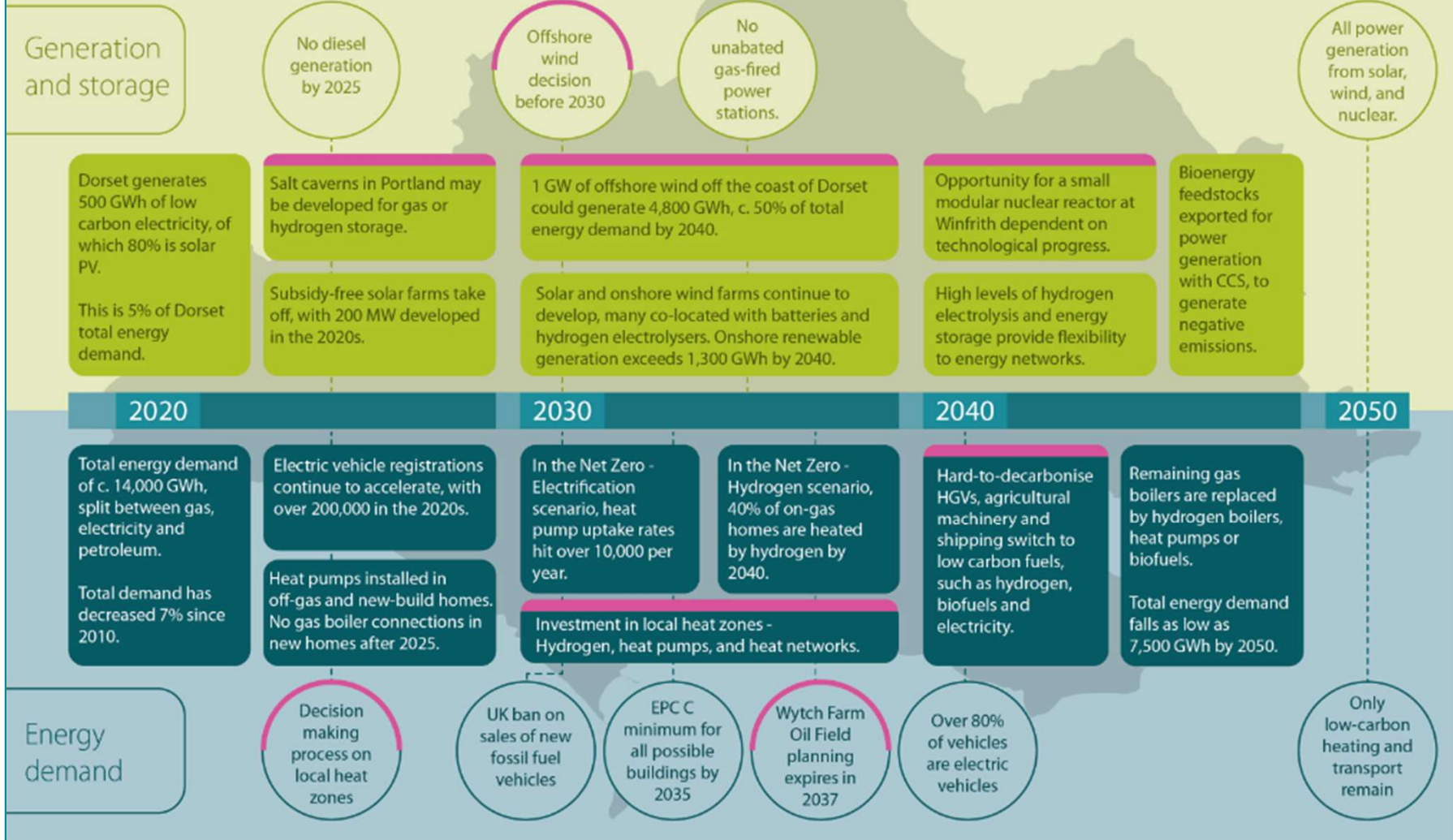
\* Not including  
c. 2,200 kt from  
Wytch Farm





# Dorset's route to Net Zero

Opportunities unique to Dorset





📍 : Bradninch Court, Castle Street, Exeter, EX4 3PL



# Retrofit

Jason Hawkes  
Magna Housing



# Retrofit & Magna

About Magna

History and context

SHDF and PAS standards

Considerations

Challenges

Opportunities

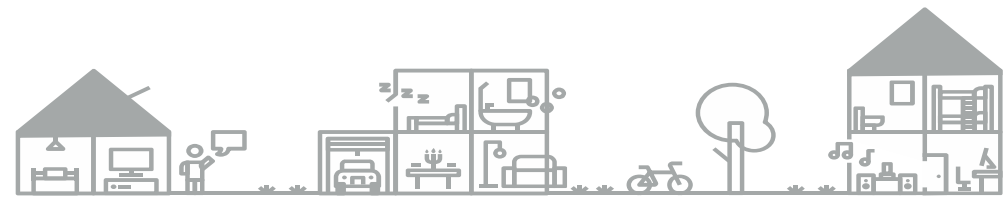




# History



...and burnt fingers

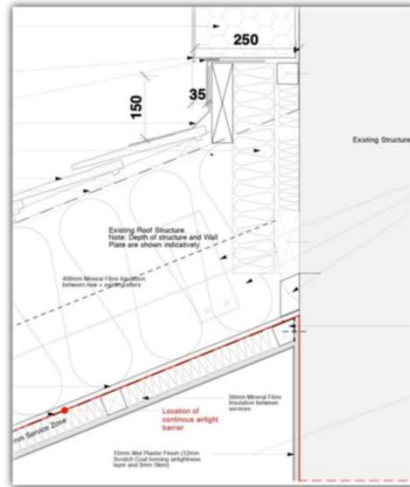




# Unintended consequences



Poor detailing



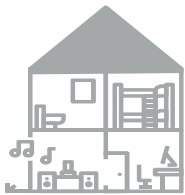
Poor spec



Robustness



Lack of ventilation assessment





# PAS2030 and PAS2035

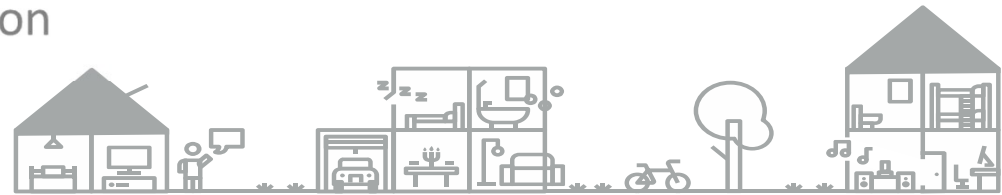
- Umbrella standards for managing retrofit
- Requirements and accreditation
- Better QC and QA
- Better outcomes
- **PAS 2035** covers how to assess dwellings **for** retrofit, identify improvement options, design and specify Energy Efficiency Measures (EEM) and monitor retrofit projects. Meanwhile, **PAS 2030**, which was redeveloped in conjunction with **PAS 2035**, covers the installation, commissioning and handover **of** retrofit projects





# Process

- Retrofit Assessor site visit
- Retrofit co-ordinator/ designer responsibilities:
  - I. Energy Performance
  - II. Ventilation strategy
  - III. Insulation and moisture movement strategy
  - IV. Airtightness strategy
  - V. Heating Strategy
  - VI. Statutory approvals
- Specification
- PAS2030 installation
- Commissioning, handover and evaluation







- Magna has 8,300 homes
- Advantage SouthWest members have c.150,000
- The South West has 2 million+ homes
- Within ASW, we need to retrofit 115 homes per week for 25 years.....
- .....to Net Zero Carbon standard

Additional 350,000 FTE needed by 2028 (CITB)

Measure	Magna	ASW extrapolated
Solid wall insulation	6,800	119,000
Cavity fill	3,000	53,000
Solar PV	4,000	70,400
Floor insulation	3,900	69,000
Heat pump	6,000	106,000
Community Heating system	700	12,300
Loft top-up	2,900	51,000

There are 3 companies based in the SW that can do EWI to the latest standards. One employs 12 people, the other two; 5 each





# Considerations

- Residents
- Existing and future programmes
- Funding
- Regulations
- Stock profile





# Challenges

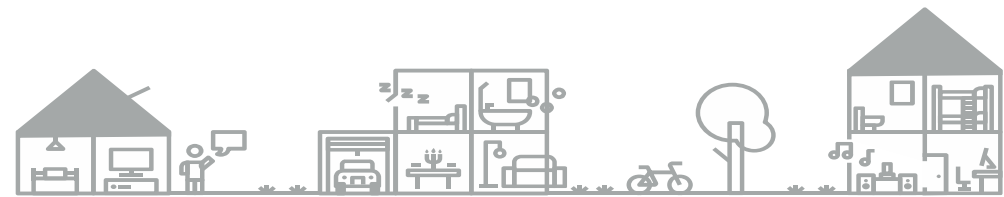
- Skills and accreditation
- Supply chain
- Infrastructure
- Climate change
- Fuel Poverty
- Damp & Mould





# Opportunities

- Funding is available- ECO4, HUG, LEAP
- Opportunities for businesses
- Opportunities for individuals
- Opportunities for communities





# Roof Top Solar

Rupert Hardy  
CPRE



**DORSET COP**

Q&A



**DORSET COP**

# COMING UP

<b>Main Hall Panel Presentations</b>	<b>Magistrates Room Workshops</b>	<b>COP Café / <b>Speakers Corner</b></b>	<b>Council Chamber Workshops</b>
13.00 – 14.00	13.00 – 14.00	13.00 – 13.30	13.00 – 14.00
Youth Activism	Engaging the Disengaged	Open Mic 1	Open for informal networking / lunch
		13.30 – 14.00	
		What's going on in Dorchester	

