



HC Concrete Construction Group, LLC

ABOUT US:

HC Concrete Construction Group delivers excellence in commercial, industrial, & municipal concrete construction projects. With a team of experienced superintendents, project managers, and quality control staff, we handle every aspect of your project to ensure **superior quality control and seamless execution**.

From pre-job planning to post-job cleanups, we offer an integrated approach that delivers timely and high-quality results. HC is known for prompt project completion and proactive communication, we are committed to bringing the **best product at the best value**, regardless of project size or scope. Our team ensures that every project meets client expectations from start to finish.

While HC is headquartered in Nashville Tennessee, we do projects across the Southeast including but not limited to Alabama, Florida, Georgia, South Carolina, North Carolina, Missouri, and Tennessee.

FULL TURN-KEY CONCRETE SCOPE:

Cast-in-Place Concrete is our specialty!

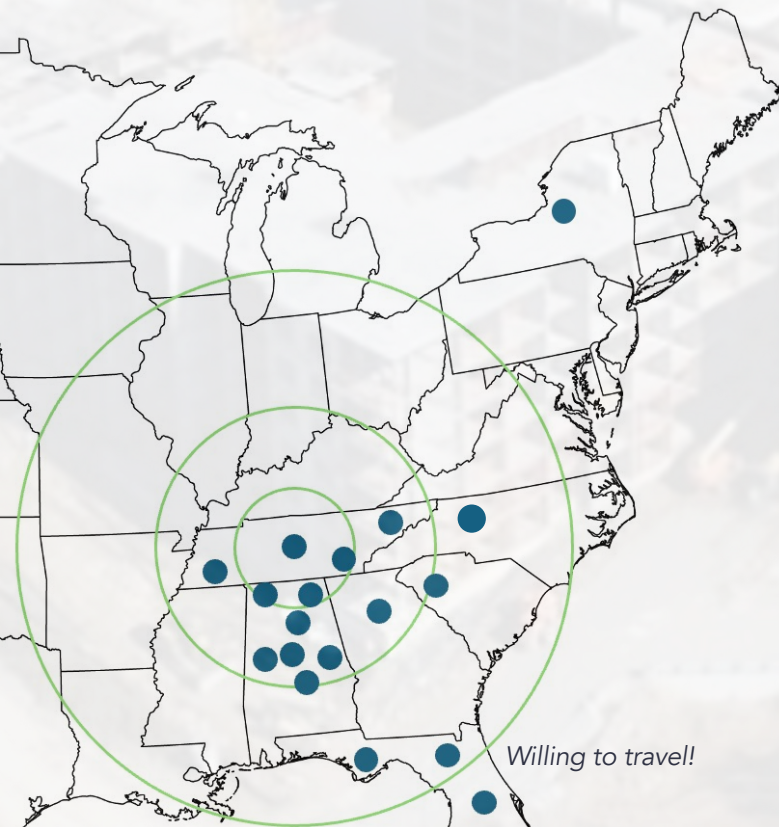
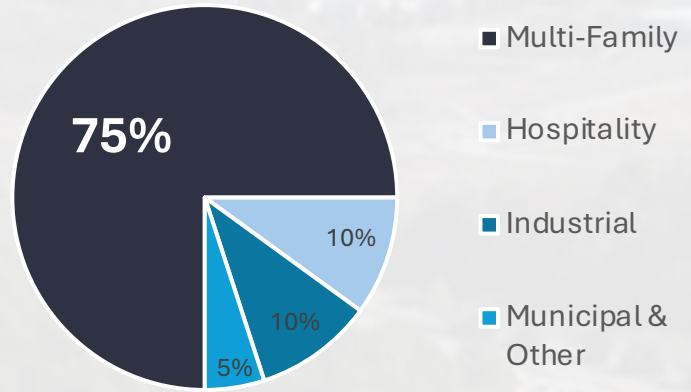
- Foundations
- Pile Caps
- Foundation Walls
- Slab on Grade
- Cast-in-Place Columns
- Cast-in-Place Walls
- Slab on Metal Decks
- Elevated Cast-in-Place Decks
- Embed Placement
- Formwork
- Shoring/Reshoring
- Rebar/Post Tension Placement
- Place/Finish Work
- We do it all from start to finish!

HC INDUSTRY FOCUS

HC Concrete has full scope concrete construction capabilities give us the ability to deliver for our client's diverse project needs. As we've continued to deliver timely and quality results, our customers have continued to work alongside us, giving us expertise in Multi-family projects, hospitality, industrial and municipal projects.

Over the last several years, we've completed a variety of projects for our customers, but we've found that Multi-Family and Hospitality tend to make up the bulk of our portfolio. This includes apartments, mixed use, hotels, parking garages, and more.

We also have experience delivering high quality results for our commercial, industrial, and municipal customers. Projects include: medical office space, industrial concrete tank, university housing, industrial slabs/foundations, and more.



OUR CUSTOMERS:

HC Concrete prides itself on providing quality commercial concrete work, ensuring prompt project completion and resulting in a lasting customer relationship.

We've worked with many reputable and industry leading GC's and Developers like Wood Partners, Chartwell, Greystar, and Franklin. HC started with a regional approach surrounding central Tennessee which has resulted in HC expanding beyond our immediate market as customer demands continue to expand throughout the region and the country.

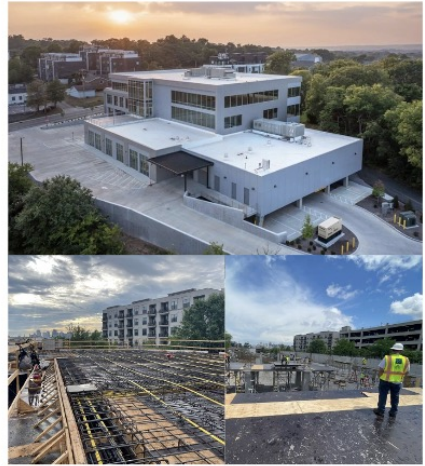
LEGACY AT COOL SPRINGS

- **Address:** 2000 Aureum Drive Franklin, TN 37067
- **Developer & GC:** Goldberg Companies & KD Construction
- **Project Type:** Multi-Family
- **Project Details:** This project spans 13 acres and includes 424 residential units alongside a multi-level parking garage. The parking structure features over 340,000 square feet and consists of six stories with a total project area of 881,000 sq ft. The construction involves over 1.3 million sq ft. of cast in place horizontal concrete and an elevated concrete frame.



ORAL SURGICAL INSTITUTE

- **Address:** 540 27th Ave North Nashville, TN 31209
- **GC:** BL Harbert International LLC
- **Project Type:** Healthcare Facility
- **Project Details:** This project includes a below grade parking garage spanning 356,000 sq ft, accompanied by 45,235 sq ft of Class A medical office space. The building structure is concrete podium and high-end steel.



HILTON TAPESTRY COLLECTION - THE PRINTING HOUSE

- **Address:** 501 3rd Ave S Nashville, TN
- **Developer:** Nashville Lodging Associates II LLC
- **Project Type:** Hospitality
- **Project Details:** The eleven story, 180-room hotel features ground floor retail space and three levels of parking. The development is constructed with cast-in-place concrete, utilizing a 13-story concrete frame structure.



CHARTWELL AT MARATHON VILLAGE PROJECT

- **Address:** 801 12th Ave N Nashville, TN 37203
- **Developer & GC:** Chartwell Hospitality & Franklin Construction Group
- **Project Type:** Mixed-Use
- **Project Details:** Chartwell at Marathon Village is a mixed-use multi-family development project featuring 388 units, including 24 live/work residences. The development includes a six story parking garage with over 500 parking spaces and 4,000 sq feet of retail space. This job encompasses a cast in place parking structure wrapped with cast-in-place elements.



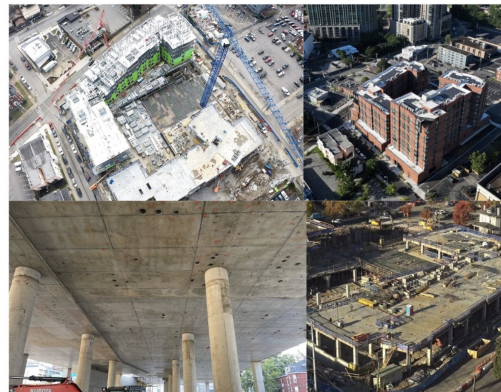
ALTA ROCHELLE

- **Address:** 1020 Southside Ct. Nashville, TN
- **Developer:** Wood Partners
- **Project Type:** Multi-Family
- **Project Details:** The Alta Rochelle project is a five-story, 355 unit residential/multifamily development situated on 3.9 acres. It features a seven-story parking structure that accommodates 485 parking spaces, along with a distinctive podium parking garage wrap construction.



BROADVIEW AT VANDERBILT

- **Address:** 120 20th Ave S Nashville, TN 37203
- **GC:** JE Dunn Construction
- **Project Type:** Student Housing
- **Project Details:** The Vanderbilt Graduate Housing Project is a mixed-use development featuring 615 beds with a variety of unit types. The 338,000 sq ft building includes ground floor retail space, providing amenities for residents and the surrounding community. The structure is supported by a single story of post-tensioned concrete.



DAVIDSON BRANCH PUMP STATION & EQUALIZATION FACILITY

- **GC:** Cumberland Valley Contractors
- **Project Type:** Municipal Project
- **Project Details:** This mass concrete project involves the construction of a new facility, featuring a 6.0 million gallon pre-stressed concrete equalization tank. The project includes over 1,100 tons of steel reinforcement to be tied and incorporates 1,250 tons of rebar.



MEHARRY MEDICAL COLLEGE LIVING LEARNING CENTER

- **Address:** 21st Ave N and Morena St
Nashville, TN 37208
- **Developer & GC:** Pillars Development & Whiting-Turner
- **Project Type:** Mixed-Use Educational Facility
- **Project Details:** A six story structure that encompasses 126 apartment-style units, flexible teaching spaces, and retail areas. It also houses office spaces, with a parking garage offering 100- 135 spaces, designed to accommodate a mix of residential, commercial, and educational uses.



APEX MARATHON VILLAGE

- **Address:** 1501 Herman St, Nashville, TN 37208
- **Developer & GC:** Greystar & Hardaway Construction
- **Project Type:** Mixed-Use
- **Project Details:** Apex Marathon Village is a 313-unit apartment complex located in the historic Marathon Village neighborhood, situated on a 2.6-acre property. This four-story mixed-use development features 310 multifamily units, including one- and two-bedroom options. The ground floor offers 2,500 sq ft of potential retail space, while a partially concealed parking garage provides convenient parking for residents and visitors.

