



1. Remove bottom clip from original fifth wheel plug mount and set aside; you will be re-using this clip later (Fig A & Fig B)
2. Measure 5/8" up from existing hole where clip was removed and drill 1/4" pilot hole (Fig C)
3. Use 2" hole saw through pilot hole (Fig D)
4. File rough edges as needed
5. Insert metal box and attach top screw (temporarily) be sure to make box perpendicular
6. Drill plot hole in bottom hole of box
7. Unscrew top screw and remove box
8. Enlarge bottom hole to 13/32"
9. Place clip (that was removed in step # 1) over new bottom hole (Fig E)
10. Install 7/12 pin trailer connector plug in box cut out by just lining it up then give it a firm tap with your palm (be sure not to push it in too far before hitting it in so it has some motion behind it. (If it does not snap in, repeat, or turn box over and use a flat head screw driver to slightly push tabs out to lock plug assembly into place.) See our resources page online for a short video if needed.
11. Connect your new 12 pin harness & trailer harness to back side of plug, then re-install box
12. Reinstall box using existing screws

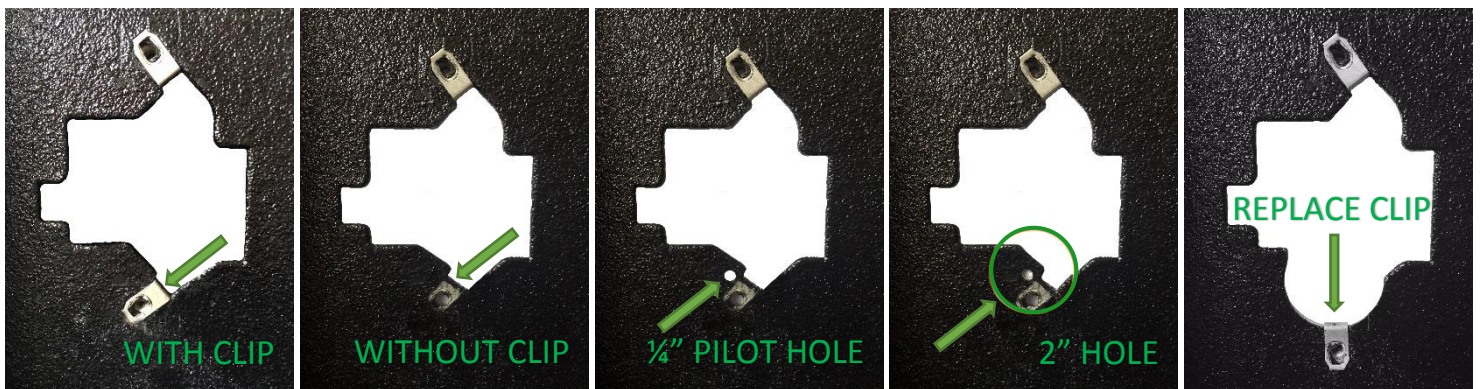


Fig "A"

Fig "B"

Fig "C"

Fig "D"

Fig "E"