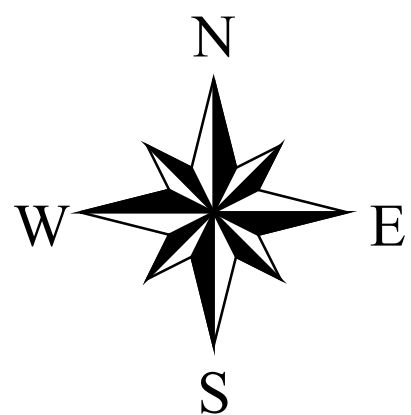
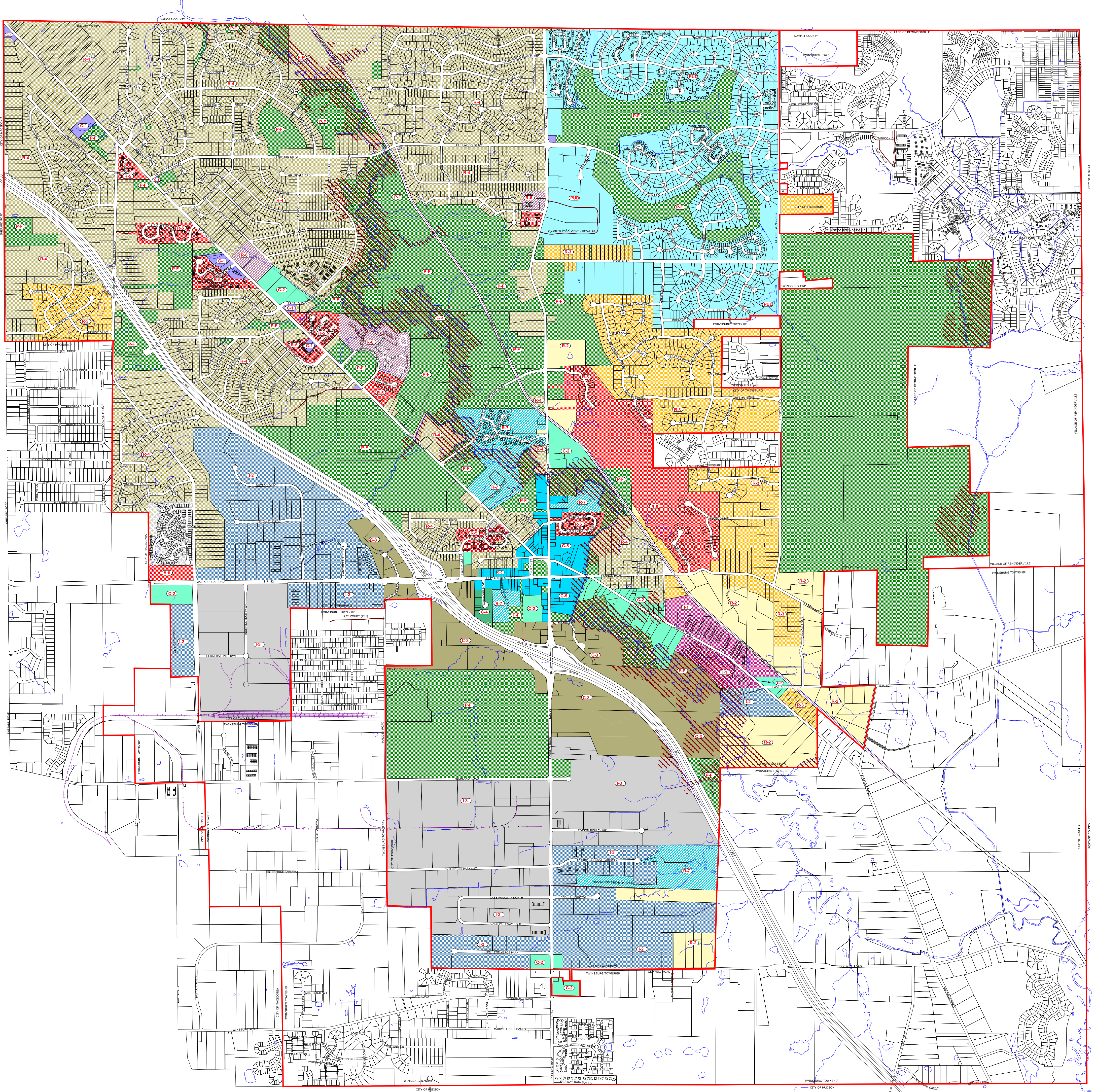


CITY OF TWINSBURG ZONE MAP



TED YATES - MAYOR
AMY MOHR P.E. - CITY ENGINEER

BASE MAP: 11/07/1989 BALLOT #34 ZONING BOOK AND MAP AS AMENDED.

FLOOD BOUNDARIES DERIVED FROM FLOOD INSURANCE RATE MAP (FIRM, EFFECTIVE DATE APRIL 19, 2016 BY FEMA.) UNINCORPORATED MAP AMENDMENTS AND REVISIONS HAVE BEEN ADDED TO REFLECT CURRENT BOUNDARIES AS OF 05/2016.

ZONING MAP ISSUE DATE: DECEMBER 11 2018

UPDATES & CHANGES:
- ORD 64-2018 (PASSED 11/06/18)
- PARCELS (03/01/2018)

PREVIOUS ISSUE DATE JUNE 7, 2016.

- CITY BOUNDARY
- PARCELS
- ZONING CLASSIFICATIONS:
- C-1 = LOCAL COMMERCIAL DISTRICT
- C-2 = COMMUNITY COMMERCIAL DISTRICT
- C-3 = INTERCHANGE BUSINESS DISTRICT
- C-4 = COMMERCIAL OFFICE DISTRICT
- C-5 = MIXED RESIDENCE / BUSINESS DISTRICT
- I-1 = INTENSIVE COMMERCIAL & LIGHT INDUSTRIAL DISTRICT
- I-2 = LIMITED INDUSTRIAL DISTRICT
- I-3 = HEAVY INDUSTRIAL DISTRICT
- R-2 = RESIDENTIAL DISTRICT - LOW DENSITY - SINGLE FAMILY - 0.75 UNITS PER ACRE
- R-3 = PLANNED RESIDENTIAL DISTRICT - MEDIUM DENSITY - SINGLE FAMILY - 1.0 UNITS PER ACRE
- R-4 = PLANNED RESIDENTIAL DISTRICT - MEDIUM DENSITY - SINGLE FAMILY - 1.2 UNITS PER ACRE
- R-5 = SINGLE FAMILY CLUSTER DISTRICT - 3.5 UNITS PER ACRE
- R-6 = APARTMENT DISTRICT - MULTIFAMILY - 5.0 UNITS PER ACRE
- R-7 = SENIOR RESIDENCE DISTRICT - APARTMENT - 12.0 UNITS PER ACRE
-OR- SINGLE FAMILY CLUSTER - 5.0 UNITS PER ACRE
- R-8 = PLANNED RESIDENTIAL DISTRICT - TWO FAMILY - 1.2 UNITS PER ACRE
- PUD = PLANNED UNIT DEVELOPMENT
- P-F = PUBLIC FACILITIES DISTRICT
- F-P = FLOOD DAMAGE REDUCTION OVERLAY DISTRICT
- SPECIAL **SEE NOTE #1

NOTE #1: AS NEGOTIATED AND REFLECTED IN THE CONSENT JUDGEMENT ENTRY, CASE NO. 5:98 CV 1018, IN THE UNITED STATES DISTRICT COURT, NORTHERN DISTRICT OF OHIO, EASTERN DIVISION. 09/07/1999