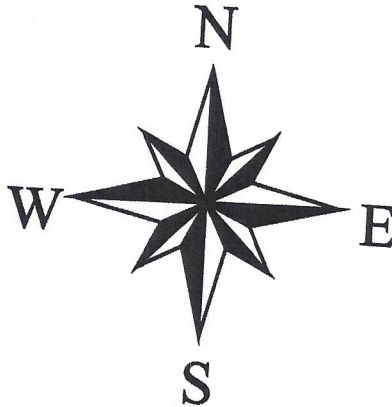


Loeen

10-3-12



KATHERINE A. PROCOP - MAYOR
AMY MOHR P.E. - CITY ENGINEER

BASE MAP: 11/07/1989 BALLOT #34 ZONING BOOK AND MAP AS AMENDED.

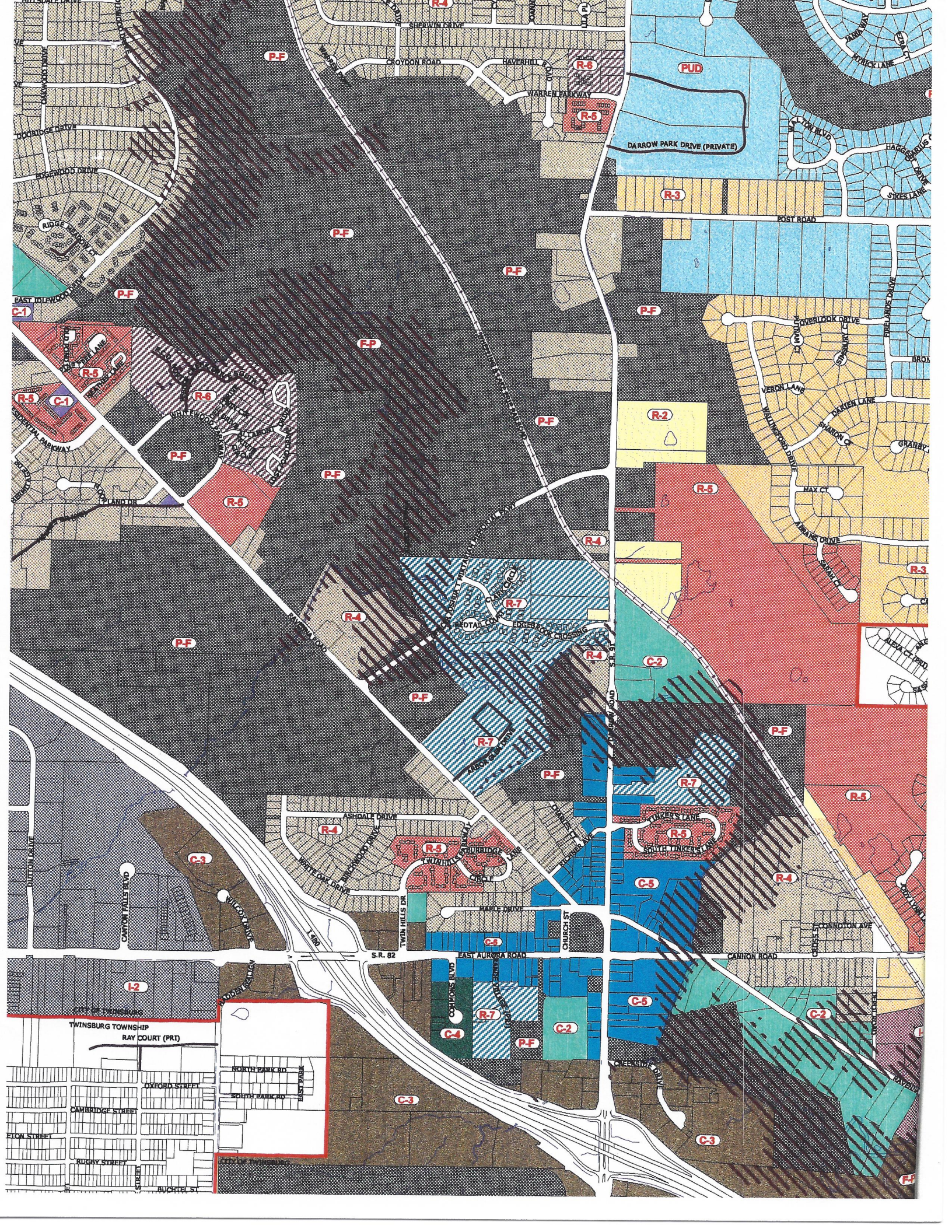
FLOOD BOUNDARIES DERIVED FROM FLOOD INSURANCE RATE MAP FIRM, EFFECTIVE DATE JULY 20, 2009 BY FEMA.) UNINCORPORATED MAP AMENDMENTS AND REVISIONS HAVE BEEN ADDED TO REFLECT CURRENT BOUNDARIES AS OF 07/2009.

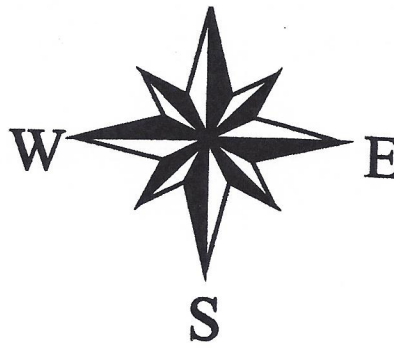
ZONING MAP ISSUE DATE: FEBRUARY 15, 2012.

UPDATES & CHANGES:
 PARCELS UPDATED
 R-8 CLASSIFICATION ADDED

PREVIOUS ISSUE DATE MAY 17, 2011.

201224x36.RTL





**KATHERINE A. PROCOP - MAYOR
AMY MOHR P.E. - CITY ENGINEER**

**BASE MAP: 11/07/1989 BALLOT #34 ZONING BOOK AND MAP
AS AMENDED.**

**FLOOD BOUNDARIES DERIVED FROM FLOOD INSURANCE RATE MAP
(FIRM, EFFECTIVE DATE JULY 20, 2009 BY FEMA.) UNINCORPORATED MA
AMENDMENTS AND REVISIONS HAVE BEEN ADDED TO REFLECT CURREN
BOUNDARIES AS OF 07/2009.**

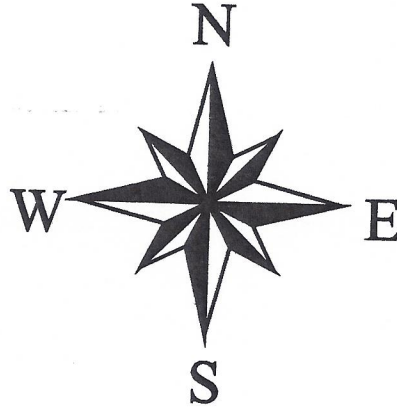
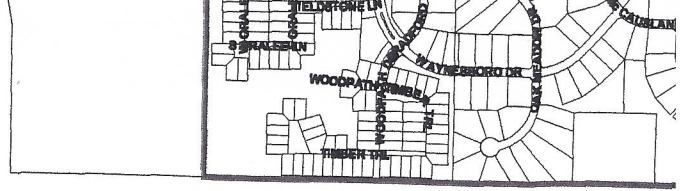
ZONING MAP ISSUE DATE: NOVEMBER 10, 2010.

UPDATES & CHANGES:

- ZONING BOUNDARY CHANGES MADE FOR THE FOLLOWING ORDINANCE
ORD 42-2010 AND ORD 43-2010.**
- BASE PARCEL MAPPING UPDATE (11-05-10).**

PREVIOUS ISSUE DATE MARCH 17, 2010.

JT FILE: ZN1110201024x36.RTL



**KATHERINE A. PROCOP - MAYOR
AMY MOHR P.E. - CITY ENGINEER**

**BASE MAP: 11/07/1989 BALLOT #34 ZONING BOOK AND MAP
AS AMENDED.**

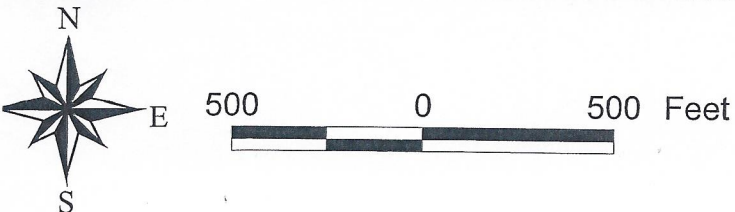
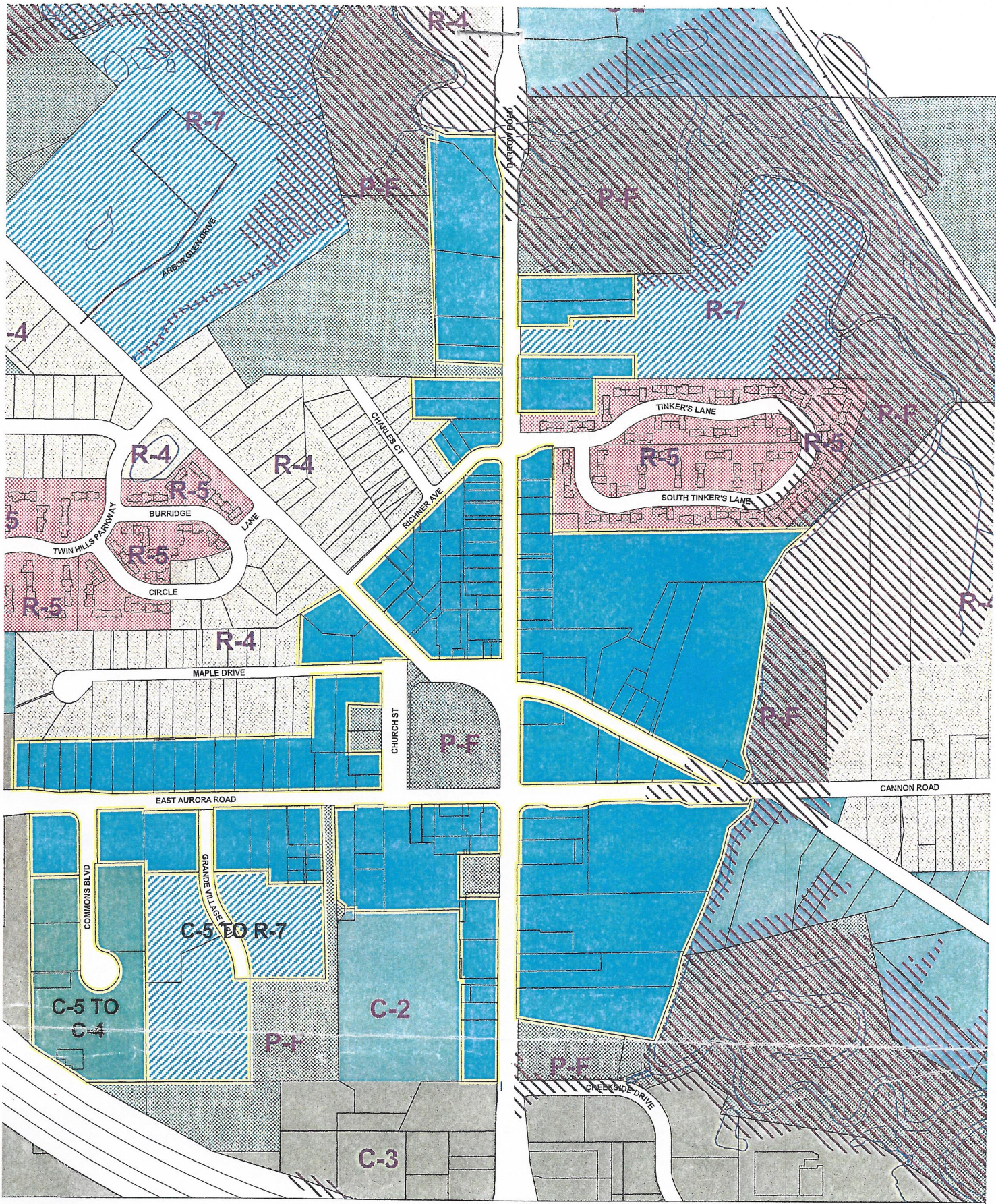
**FLOOD BOUNDARIES DERIVED FROM FLOOD INSURANCE RATE MAP
(FIRM, REVISED AUGUST 4, 1988 BY FEMA.) MAP AMENDMENTS AND
REVISIONS HAVE BEEN ADDED TO REFLECT CURRENT BOUNDARIES
AS OF 12/2003.**

ZONING MAP ISSUE DATE: MAY 18, 2007

**UPDATES & CHANGES: ZONING BOUNDARY CHANGES MADE FOR
THE FOLLOWING ORDINANCES; 176-2006, 177-2006, 197-2006, 15-2006
AND BASE PARCEL MAPPING UPDATE (1-1-07). PREVIOUS ISSUE
DATE AUGUST 22, 2006.**

**THE ZONING MAP IS AS RECOMMENDED TO COUNCIL FOR ADOPTION
BY PLANNING COMMISSION ON APRIL 23, 2007.**

PRINT FILE: ZN0518200724x36.RTL



C-5 DISTRICT
ZONING BOUNDARY RECOMMENDATION
 MAP PREPARED FOR THE CITY OF TWINSBURG.
 DOCUMENT FOR CITY OF TWINSBURG USE ONLY.
 MAP PREPARED: JANUARY 25, 2007



**KATHERINE A. PROCOP - MAYOR
AMY MOHR P.E. - CITY ENGINEER**

**BASE MAP: 11/07/1989 BALLOT #34 ZONING BOOK AND MAP
AS AMENDED.**

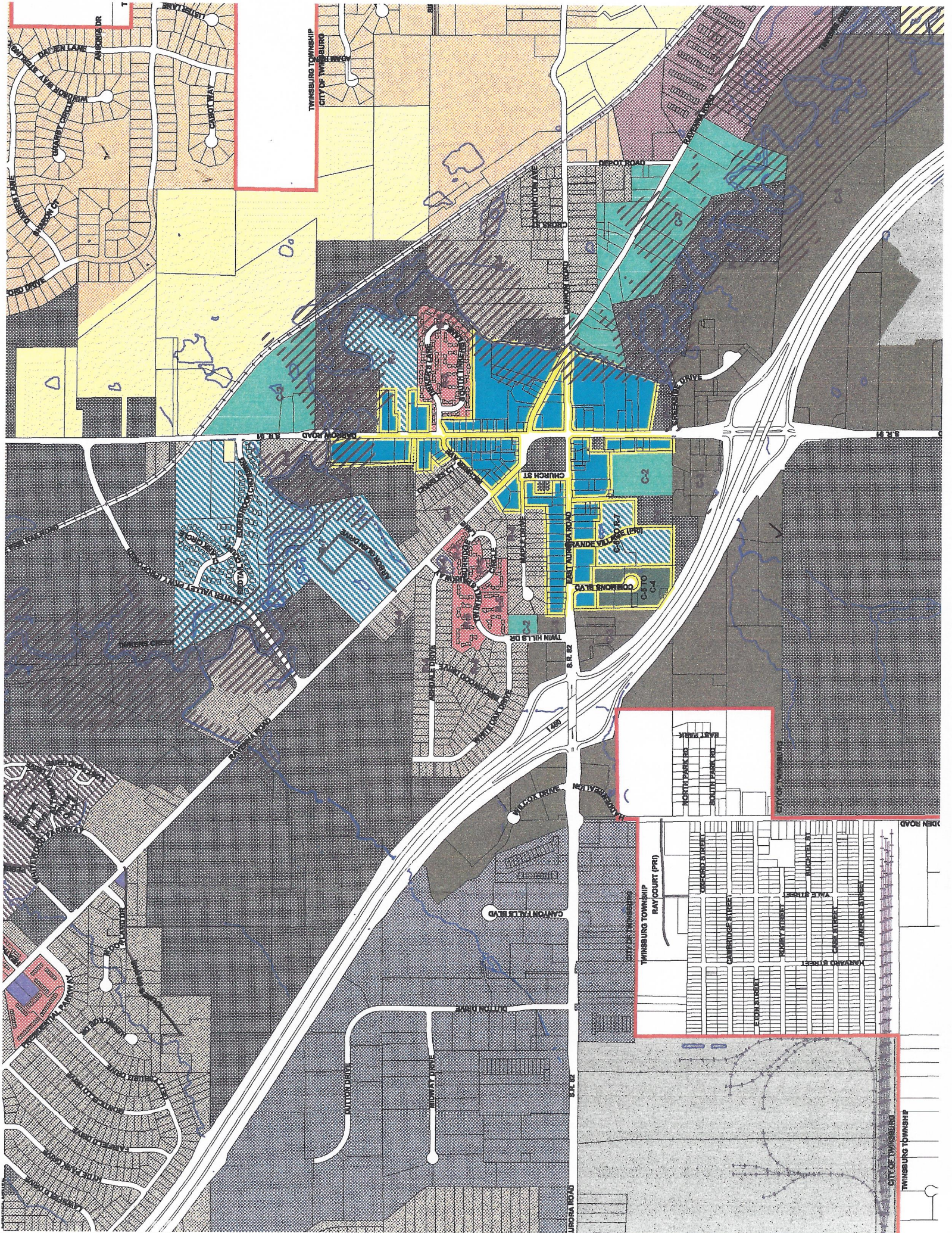
**FLOOD BOUNDARIES DERIVED FROM FLOOD INSURANCE RATE
(FIRM, REVISED AUGUST 4, 1988 BY FEMA.) MAP AMENDMENTS
REVISIONS HAVE BEEN ADDED TO REFLECT CURRENT BOUNDARIES
AS OF 12/2003.**

ZONING MAP ISSUE DATE: AUGUST 22, 2006

**UPDATES & CHANGES: ZONING BOUNDARY CHANGES MADE FROM
THE FOLLOWING ORDINANCES; 79-2004, 164-2004, 165-2004
83-2005, 92-2005, 93-2005 130-2005 AND 02-2006 AND. BASE PARCEL
MAPPING UPDATE (2-17-06). PREVIOUS ISSUE DATE FEBRUARY**

MAP PREPARED: FEBRUARY 6, 2007

PRINT FILE: ZNC-5ZONERECOMMEND.RTL





**KATHERINE A. PROCOP - MAYOR
AMY MOHR P.E. - CITY ENGINEER**

**BASE MAP: 11/07/1989 BALLOT #34 ZONING BOOK AND MAP
AS AMENDED.**

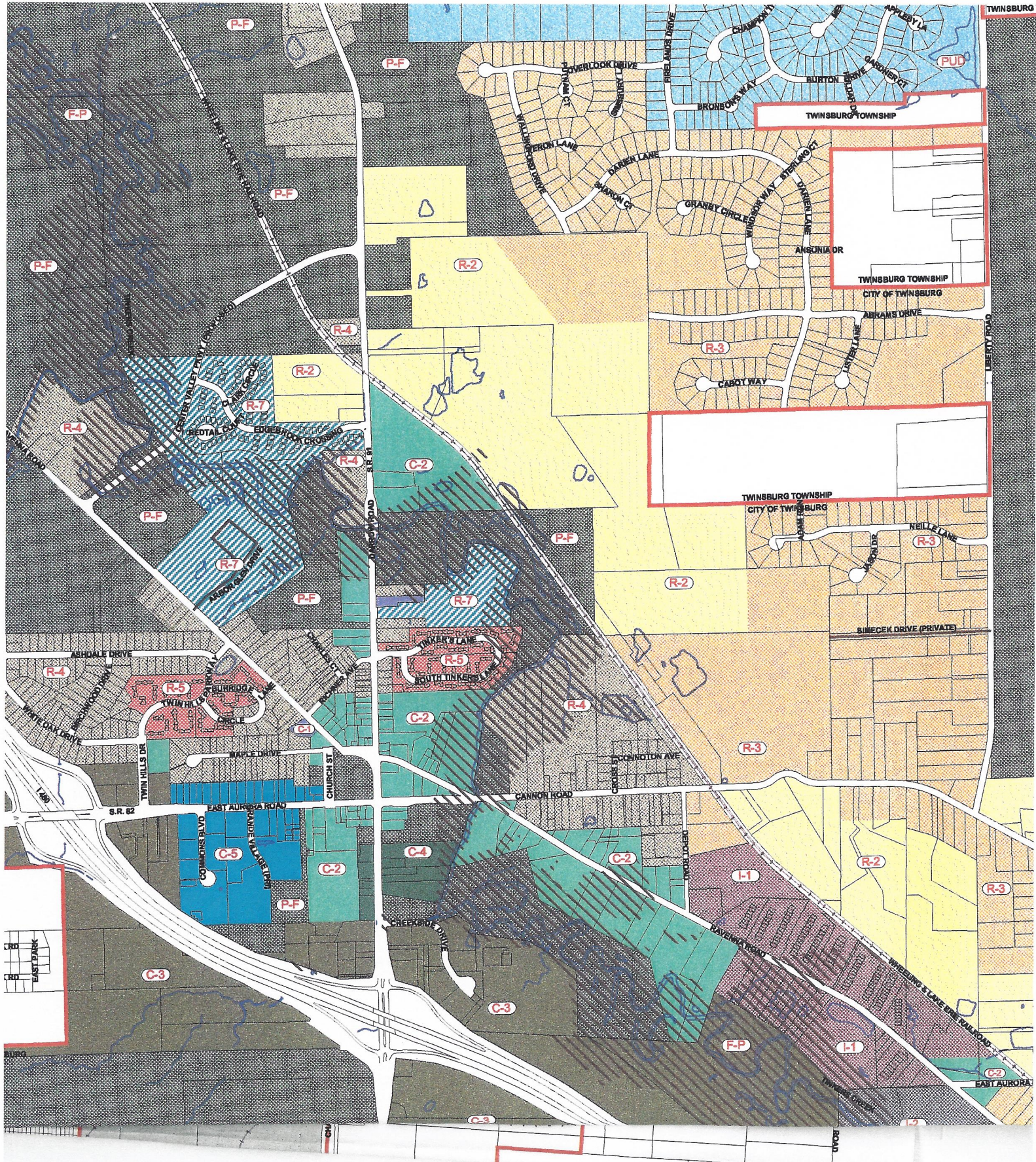
**FLOOD BOUNDARIES DERIVED FROM FLOOD INSURANCE RATE MAP
(FIRM, REVISED AUGUST 4, 1988 BY FEMA.) MAP AMENDMENTS AND
REVISIONS HAVE BEEN ADDED TO REFLECT CURRENT BOUNDARIES
AS OF 12/2003.**

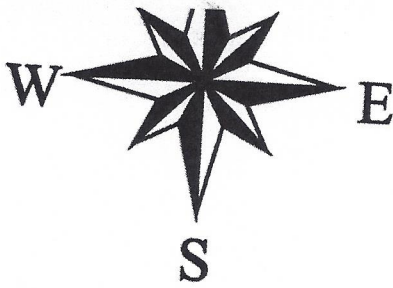
**NOTE A: ANNEXED PROPERTY AT CHAMBERLIN ROAD AND SR 82.
ZONED HEAVY INDUSTRY DISTRICT (I-2) IN ACCORDANCE WITH
CHAPTER 15 OF THE ZONING RESOLUTION OF TWINSBURG TOWNSHIP,
OHIO, EFFECTIVE FEBRUARY, 2001.**

ZONING MAP ISSUE DATE: FEBRUARY 17, 2006

**UPDATES & CHANGES: ZONING BOUNDARY CHANGES MADE FOR
THE FOLLOWING ORDINANCES; 79-2004, 164-2004, 165-2004
83-2005, 92-2005 AND 93-2005. BASE PARCEL MAPPING UPDATE.
PREVIOUS ISSUE DATE JANUARY 31, 2005.**

: ZN0217200624x36.RTL





**KATHERINE A. PROCOP - MAYOR
AMY MOHR P.E. - CITY ENGINEER**

BASE MAP: 11/07/1989 BALLOT #34 ZONING BOOK AND MAP
AS AMENDED.

FLOOD BOUNDARIES DERIVED FROM FLOOD INSURANCE RATE MAP
(FIRM, REVISED AUGUST 4, 1988 BY FEMA.) MAP AMENDMENTS AND
REVISIONS HAVE BEEN ADDED TO REFLECT CURRENT BOUNDARIES.

ZONING MAP ISSUE DATE: MARCH 17, 2003

2-5-04

ILE: ZN03172003.RTL

No Vote

RL
2002
No Vote

