

# GALA DAY

PRINT OUT

SATURDAY 25TH MAY 2024

## EVERYTHING YOU NEED TO KNOW! BLACKRIDGE, WESTRIGG AND WESTCRAIGS CHILDREN'S GALA DAY

After year's of debate the gala day committee have finally managed to change the gala day back to a Saturday! This year's gala is going ahead on **Saturday 25th May**, we do hope everyone will join and make it one to remember.

The Parent Council and School has kindly took charge of the theme and floats for Nursery and P1 - P3 school kids. They have chosen the theme to be Roald Dahl with the new Charlie and Chocolate Factory out and lots of other choices.

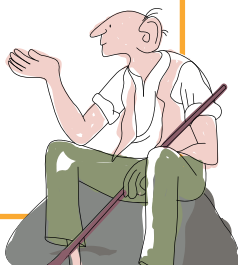
A civic week programme has been assembled with familiar events, starting Monday 20th there will be an event every day finishing with the main event on Saturday!

The parade will leave the school at 12 noon to Westrigg Park via the Clachan followed by entertainment and the races in the park.

This year Blackridge lost an absolute legend Walter Robertson (Wattie). As a mark of respect for Walter, we would like to hold a minute's silence down at Westrigg park at 3pm, and would also like to keep Watties race going every year in his memory which will be men's age bracket 40-60. R.I.P Walter.

**Thank you to everyone who has helped make this Gala day happen and for all donations.**

**Hip Hip!**



## FLOAT DECORATION

A group of parents from the Blackridge Primary School Parent Forum are organising the Float for the Blackridge Gala Day, on Saturday 25th May. This year the theme will be **Roald Dahl**, as chosen by the children. They want to make this event bigger & better than ever and want to invite all children from Nursery, P1, P2 & P3 to join them on their float for the parade this year.

Please follow the Blackridge Primary School Forum Facebook page for all updates and information on this event. They cannot wait to give the children in the school and the community an amazing day!!"

Parents are also asked to support the preparation of the float.  
Please contact [bpsparentcouncil@hotmail.com](mailto:bpsparentcouncil@hotmail.com)



Charlie and the Chocolate Factory

James and the Giant Peach

THE BFG

MATILDA

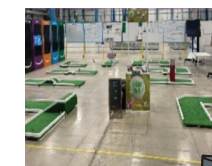
THE ENORMOUS CROCODILE

FANTASTIC MR FOX



## GALA DAY PARK

Gala Day Park will be a little different this year, there will be **8 activities** to enjoy and costing only **£10 per wristband for use all day!** Wristbands will be on sale from 1st May.



RODEO BULL • BUNGEE RUN

TOTAL WIPE OUT

BEAT THE GOALIE • GIANT SLIDE

9 HOLE MINI GOLF

LARGE CASTLE

ASSAULT COURSE



# CIVIC WEEK



**MONDAY 20TH**  
pub quiz

**TUESDAY 21ST**  
it's a knockout

**WEDNESDAY 22ND**  
prize bingo

**THURSDAY 23RD**  
talent show

**FRIDAY 24TH**  
gala football

**SATURDAY 25TH**  
the main event...

We look forward to seeing as many of you as possible at these events - all welcome



**MON  
20**

## PUB QUIZ

Coopers Lounge - 7pm  
£5 per team to enter

Cash prize for winning team



**TUE  
21**

## IT'S A KNOCKOUT

Primary School Kick Pitch - 6pm  
Primary 1 - 7

Come along and join in the fun and games.



**WED  
22**

## PRIZE BINGO

Craig Inn Centre  
Eyes down 7pm

All welcome.  
Lots of great prizes to be won!



**THUR  
23**

## TALENT SHOW

Craig Inn Centre  
from 4.30PM

Come along and take part or watch. All welcome.



**FRI  
24**

## GALA DAY FOOTBALL

Westrigg Park  
From 4.30pm

All welcome  
Come and show your support



# GALA DAY

**SATURDAY 25th MAY**  
**PROCESSION TIMETABLE**

TIME	EVENT	LOCATION
10.15am	Judging of decorated premises	VARIOUS
11.15am	Judging of fancy dress and floats	BLACKRIDGE PRIMARY SCHOOL
12.00 noon	Procession leaves Primary School	BLACKRIDGE PRIMARY SCHOOL
1.30 - 3.00pm	Gala day bags can be collected	WESTRIGG PARK
1.00pm approx	Bands play in park	WESTRIGG PARK
3.00pm approx	Gala day races	WESTRIGG PARK
5.00pm approx	Gala day ends	WESTRIGG PARK

Premises can only be judged if an entry has been received by 5.00pm on Wednesday 22nd May. Forms are available from committee members, the chemist or Post Office. Please hand forms to a committee member or via private message on our facebook page.

Floats please assemble at bottom school car park or on main street at bottom of school brae.

PLEASE NOTE: The judges decision is final

