

SAY MY NAME

(BEETLEJUICE:) (*getting an idea*) Hey. I get it.
We're not that different. You don't like your dad?
I don't like my mom. She is a DEMON. Point is...
maybe we can help each other.

Underworld Hip Hop (Swing 16ths)

4x (BEETLEJUICE:)

You— could use a

3

bud - dy.

Don't— you want a

4

pal? (Yes I do! Yes I do!)

Girl,— the way I



see it, your dad-dy should be leav-in' and you should stick a-

(BEETLEJUICE:)



round. (and leave him) Noth-in! So, Ly - di - a, don't

LYDIA:



What?

(BEETLEJUICE:)



end your - self, de - fend_ your - self. Dad -



- dy is the one you should maim. To - ge - ther we'll ex -

(BEETLEJUICE:)



ter-mi-nate, as-sass-in-ate. The fi-ner points can wait. But

LYDIA:



☺

☺
No!

(BEETLEJUICE:)

10 first you got - ta say my name!

BEETLEJUICE: Could I get some help here?

(BEETLEJUICE:)
(opt. 8vb)

11 Go — a - head and

(Ensemble of Beetlejuice CLONES enters.)

12 jump, but that — won't stop — him. Here you got a

13 so - lid Plan - B op - tion. I — can bring your

14 dad - dy so — much pain. — All — you got - ta

ALL:

15 do is say my name. — Girl, — just say it

BEETLEJUICE:



three times in a row— and— you won't be-

ALL:



lieve how far— I'll go I'm on the



bench, but Coach, just put me in the game.

BEETLEJUICE:



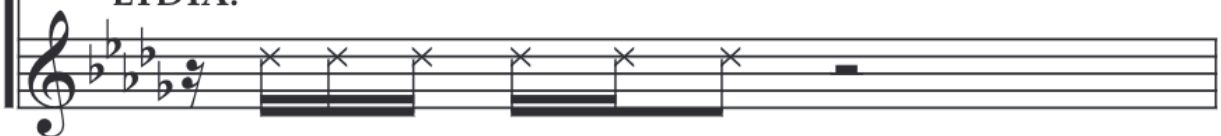
— All you got - ta do is say my name.

(BEETLEJUICE:)



Well, I can't say it.

LYDIA:



But I don't know your name.

21

Yes! Let's play it.

How a-bout a game of cha-rades?

(BEETLEJUICE pantomimes, "Two words.") (BEETLEJUICE pantomimes, "Second word.") (BEETLEJUICE pantomimes, "Drinking.")

22 **GROUP 1:**

Right. Uh - huh! No.

(LYDIA:)

Two words. Se - cond word. Drink?

(BEETLEJUICE pantomimes, "First word.")

23

No. No. Yes!

Be - ve-rage? Milk? Juice? O. - K.

(BEETLEJUICE
pantomimes,
"Beetle.")

24 **GROUP 2:**

O. - K. No. Close, but no.

(LYDIA:)

First word. Bug? Ant?

25 (GROUP 2:) **BEETLEJUICE:**

Yes! Wow, I'm im - pressed! And

(LYDIA:)

Bee - tle? Bee - tle-juice!

26 (BEETLEJUICE:)

all you got - ta do is say my name three times. Three

27

times in a row, - it must be spo-ken un - bro-ken.

(BEETLEJUICE:)

28

Rea - dy? O. - K., GO!

LYDIA:

Yeah!

Suspense! (Straight 16ths)

29 **LYDIA:** **ALL:**

Bee - tle - juice,

Yes.

30 **LYDIA:** **ALL:**

Bee - tle - juice,

Yes!

BEETLEJUICE: Oh, it's gonna be so good!

LYDIA:
31

BEEEEEEEEEE- - - - - cause


Faster (Swing 16ths)

33 **(LYDIA:)**

you're so smart a stand - up bro. — I'll think

34  — a - bout your of - fer, let you know. But I—

35  — pre - fer my chan - ces down be - low

36  Beet-le-juice, Beet-le-juice, be-ing young and fe-male does-n't

37  mean that I'm an ea - sy mark. I've been

38  swim-ming with pi - ra - nhas. I don't need a shark.

39  Yes life sucks, but not— that much. O - K.



Bee - tle - juice, Bee - tle - juice, BEEEEEEE—

(LYDIA:) –cause I want to make sure I know who I'm working with. Do you have any references?

BEETLEJUICE: Playing hardball, huh? You're tougher than you look. *(The MAITLANDS come out the window—)*

BARBARA: Lydia!

ADAM: Are you alright?

BEETLEJUICE: A-dog! B-town! My old pals!



ADAM: *(to BEETLEJUICE)*
You get away from her!
Lydia, this is a dangerously
unstable individual.

*(BEETLEJUICE snaps his fingers,
thereby possessing the
MAITLANDS.)*

Puppet Show

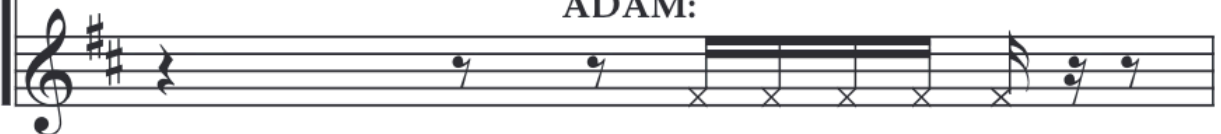


BARBARA:



Bee - tle - juice is awe - some.

ADAM:



Bee - tle - juice is smart.

48

B - J is a grad-u - ate of Juil - li - ard.

B - J is a grad-u - ate of Juil - li - ard.

Double Time Jazz!

(BARBARA,
ADAM:)

49

He can help. We found him on Yelp. Our

51

trou-bles all en-ded on the day that we be-frien-ded him.

53

Ev - 'ry word_ is the truth.

(BEETLEJUICE snaps his fingers, ending the possession.)

55

Bee-tle-juice, Bee-tle-juice, Bee-tle-juice.

BEETLEJUICE: (to LYDIA) There ya go,
kid. A couple-a five-star reviews.

Underworld Hip Hop (Half-Time Again)

58 2 60 ALL:

That was po-*sess*-*sion*

2 LYDIA:

What was that?

BEETLEJUICE:

61

An - y ghost can do it in less than one les - son

62 **(BEETLEJUICE:)**

Pre-tty much an - y ghost -'ll do, sure...

LYDIA:


A - ny ghost? Then

63 **(LYDIA:)**

Bee - tle - juice, what do I need you for?

BEETLEJUICE:

64



Whoa, Whoa, Whoa, Whoa, Wait! We're

(LYDIA pushes BEETLEJUICE off the roof.)

ADAM, BARBARA: Lydia!?

LYDIA: What? He was already dead.

And you heard what he said:

Any ghost can do possession stuff.

65



B - F - F - F - Fs for-e - ver!

Underworld Hip-Hop (Swing 16ths)

68 **(LYDIA:)**




We don't need that de - mon, the three of us a -

69



lone can wreck Dad's eve - nin'. To - ge - ther we can

70



make a grown man weep. Guys,— I got a

(LYDIA:)

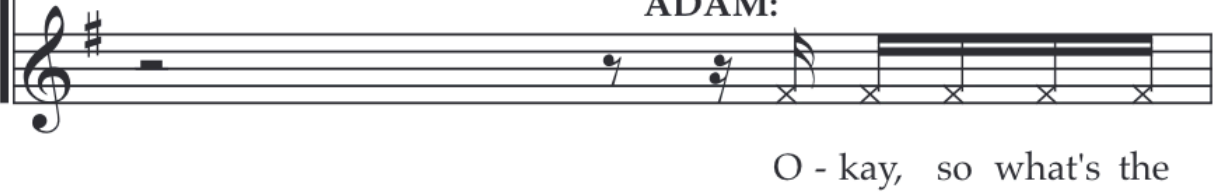
71



din - ner date to keep.

Musical notation for Lydia's line 71: Treble clef, key signature of one sharp (F#), time signature of 4/4. The melody consists of quarter notes: D4, E4, F#4, G4, A4, followed by a quarter rest, and then a quarter note B4. The lyrics are "din - ner date to keep." with dots under each syllable.

ADAM:



O - kay, so what's the

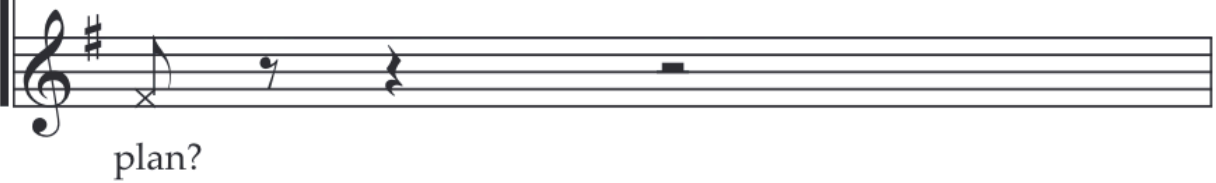
Musical notation for Adam's line 71: Treble clef, key signature of one sharp (F#), time signature of 4/4. The melody starts with a whole rest, followed by a quarter note B4, a quarter note A4, and a quarter note G4. The lyrics are "O - kay, so what's the".

72



Teach Dad a les - son, he is gon - na

Musical notation for Lydia's line 72: Treble clef, key signature of one sharp (F#), time signature of 4/4. The melody starts with a quarter rest, followed by quarter notes: B4, A4, G4, F#4, E4, D4, C4. The lyrics are "Teach Dad a les - son, he is gon - na".

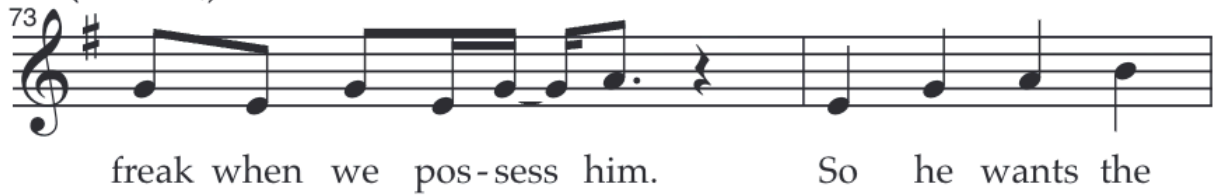


plan?

Musical notation for Adam's line 72: Treble clef, key signature of one sharp (F#), time signature of 4/4. The melody consists of a quarter note B4, a quarter note A4, and a quarter note G4. The lyrics are "plan?".

(LYDIA:)

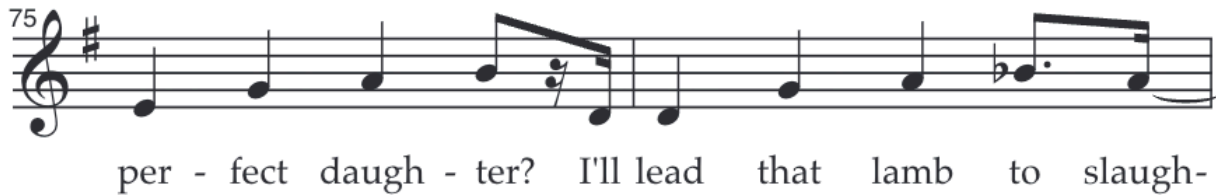
73



freak when we pos - sess him. So he wants the

Musical notation for Lydia's line 73: Treble clef, key signature of one sharp (F#), time signature of 4/4. The melody consists of quarter notes: B4, A4, G4, F#4, E4, D4, C4, B4, A4, G4, F#4, E4, D4, C4. The lyrics are "freak when we pos - sess him. So he wants the".

75



per - fect daugh - ter? I'll lead that lamb to slaugh -

Musical notation for Lydia's line 75: Treble clef, key signature of one sharp (F#), time signature of 4/4. The melody consists of quarter notes: B4, A4, G4, F#4, E4, D4, C4, B4, A4, G4, F#4, E4, D4, C4. The lyrics are "per - fect daugh - ter? I'll lead that lamb to slaugh -".

77



- ter! Yeah, I got game.

Musical notation for Lydia's line 77: Treble clef, key signature of one sharp (F#), time signature of 4/4. The melody consists of quarter notes: B4, A4, G4, F#4, E4, D4, C4, B4, A4, G4, F#4, E4, D4, C4. The lyrics are "- ter! Yeah, I got game.".

78




I'm gon - na make him say my name._

Detailed description: This block contains the musical notation for measure 78. It features a single treble clef staff with a key signature of one sharp (F#) and a common time signature. The melody begins with a whole rest, followed by a quarter rest, a quarter note G4, a quarter note A4, a quarter note B4, a quarter note C5, a quarter note B4, a quarter note A4, and a quarter note G4. The lyrics "I'm gon - na make him say my name._" are positioned below the staff.


(LYDIA:)

79



I'll make him say my name.


BARBARA,
ADAM:




Make him say your name.

Detailed description: This block contains the musical notation for measure 79. It features two treble clef staves with a key signature of one sharp (F#) and a common time signature. The top staff has a whole note G4, followed by a quarter rest, a quarter note A4, a quarter note B4, a quarter note C5, a quarter note B4, a quarter note A4, and a quarter note G4. The lyrics "I'll make him say my name." are positioned below the staff. The bottom staff has a whole rest, followed by a quarter rest, a quarter note G4, a quarter note A4, a quarter note B4, a quarter note C5, a quarter note B4, a quarter note A4, and a quarter note G4. The lyrics "BARBARA, ADAM: Make him say your name." are positioned below the staff.

80



I'll make him say my name.



Make him say your name.

Detailed description: This block contains the musical notation for measure 80. It features two treble clef staves with a key signature of one sharp (F#) and a common time signature. The top staff has a whole note G4, followed by a quarter rest, a quarter note A4, a quarter note B4, a quarter note C5, a quarter note B4, a quarter note A4, and a quarter note G4. The lyrics "I'll make him say my name." are positioned below the staff. The bottom staff has a whole rest, followed by a quarter rest, a quarter note G4, a quarter note A4, a quarter note B4, a quarter note C5, a quarter note B4, a quarter note A4, and a quarter note G4. The lyrics "Make him say your name." are positioned below the staff.

81



Not run-ning a -



Make him say your name._ Not run-ning a -

Detailed description: This block contains the musical notation for measure 81. It features two treble clef staves with a key signature of one sharp (F#). The top staff has a whole note G4, followed by a quarter rest, a quarter note A4, a quarter note B4, a quarter note C5, a quarter note B4, a quarter note A4, and a quarter note G4. The lyrics "Not run-ning a -" are positioned below the staff. The bottom staff has a whole rest, followed by a quarter rest, a quarter note G4, a quarter note A4, a quarter note B4, a quarter note C5, a quarter note B4, a quarter note A4, and a quarter note G4. The lyrics "Make him say your name._ Not run-ning a -" are positioned below the staff. The time signature changes from common time to 2/4 and then to 4/4.

83

way! I'll make him say my name! (opt up)

way!

Music Theatre International
 423 West 55th Street
 Second Floor
 New York, NY 10019
 T: +1 (212) 541-4684 (tel:+1 212 541-4684)
 F: +1 (212) 397-4684

Music Theatre International: Europe
 12-14 Mortimer Street
 London W1T 3JJ
 T: +44 (0)20 7580 2827 (tel:44 + 020 7580 2827)
 F: *44 (0)20 7436 9616

Music Theatre International (Australasia)
 Ground Floor, Suite 2
 20-22 Albert Road,
 South Melbourne, 3205
 Victoria, Australia
 T: +61 3 9581 2222 (tel:+61 3 9581 2222)

©MTI Enterprises Inc. All Rights Reserved.

[TERMS & CONDITIONS \(/LEGAL\)](#) [PRIVACY POLICY \(/PRIVACY-POLICY\)](#) [CONTACT \(/ABOUT/CONTACT-US\)](#)



[SEND FEEDBACK \(/CONTACT?DESTINATION=SCORE/19552609/PRINT\)](#)