

SUMMER | FALL 2024 Catalog



DONALD ROSS  

---

SPORT



**DONALD ROSS**  
**SPORT**

TABLE OF CONTENTS

SPORT FIT GUIDE | 3

SPORT PATRIOTIC COLLECTION | 4 - 5

SPORT KNIT SHIRTS | 6 - 13

SPORT LONG SLEEVE SHIRTS | 14

SPORT LAYERS | 15 - 17

SPORT SWEATERS | 18

BOTTOMS | 19

SPORT COLOR STORIES | 20 - 23

ORDER/LOGO NOTES | 24

TOURNAMENT PROGRAM | 25 - 27

**Green Grass Site:**

[www.donaldross.com/green-grass/](http://www.donaldross.com/green-grass/)


**Customer Service:**

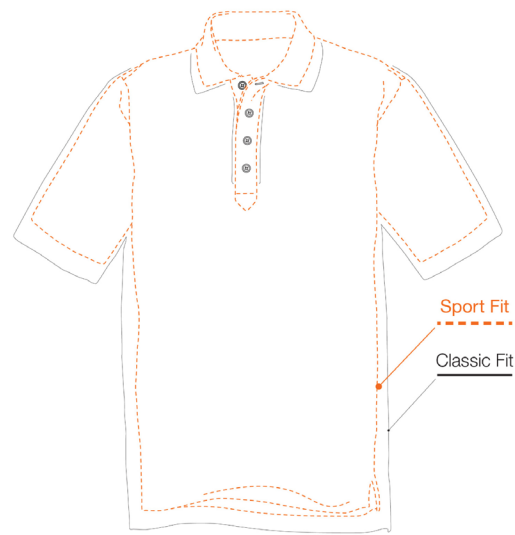
Phone: 910-944-3114

Email: [customerservice@donaldross.com](mailto:customerservice@donaldross.com)

## SPORT *Fit*

**SPORT** garments offer a trimmer shape through body and sleeve with added stretch for the players that enjoy a closer to body, more *athletic fit*.

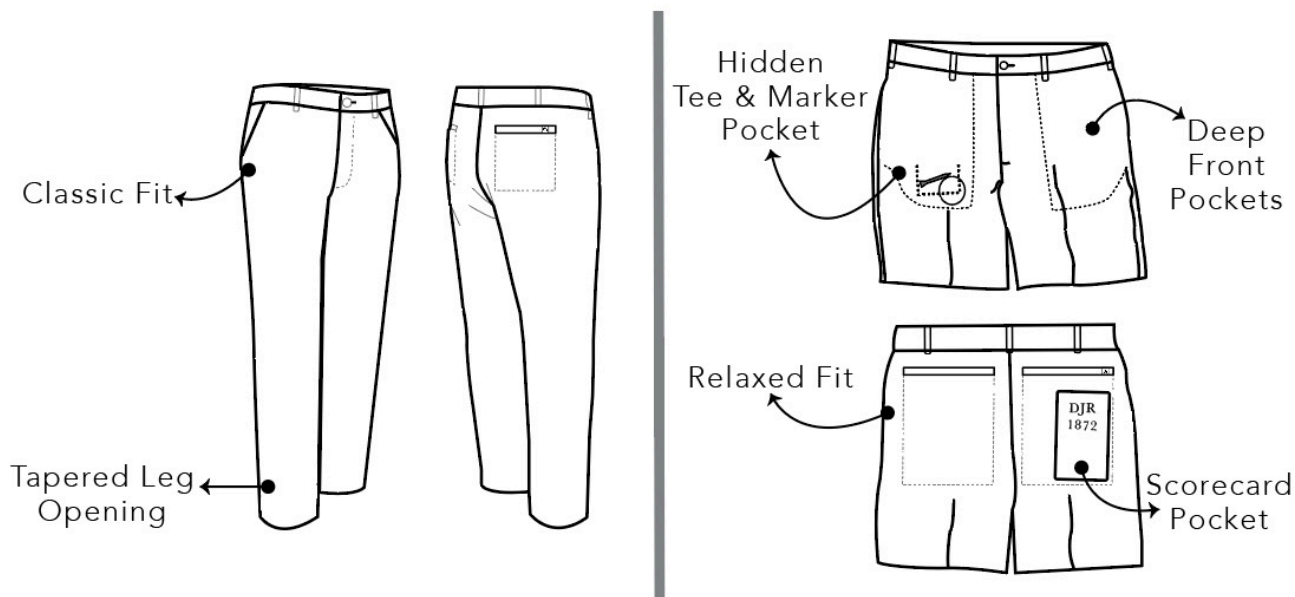
	Weight (lbs)	Sport Coat Size
<i>Small</i>	130-160	36-39
<i>Medium</i>	160-185	39-41
<i>Large</i>	185-210	41-44
<i>X-Large</i>	210-245	44-48
<i>XX-Large</i>	240+	50+



## *Bottoms*

Pant Inseam Options 30 & 32

<i>Pants</i>	32	<i>X</i>	34	<i>X</i>	36	38	40	42	44
<i>Shorts</i>	32	33	34	35	36	38	40	42	44





### TRUMAN | SPSTSD-MSP

Short sleeve **jersey** featuring a space dye feeder stripe with a three-button placket and spread collar. [ST0535]



100  
WHITE  
MULTI

SKU	S	M	L	XL	2XL
SPSTSD-MSP-100					



### FRANKLIN | SPPPOP-MSP

Short sleeve **jersey** featuring a popsicles print with a three-button placket and spread collar. [PR0565]



100  
WHITE MULTI

SKU	S	M	L	XL	2XL
SPPPOP-MSP-100					



### CLINTON | SPPRIB-MSP

Short sleeve **jersey** featuring a ribbons print with a three-button placket and spread collar. [PR0565]



400  
NAVY MULTI

SKU	S	M	L	XL	2XL
SPPRIB-MSP-400					



### UNCLE SAM | SPPSAM-MSP

Short sleeve jersey featuring an Uncle Sam's hat print with a three-button placket and spread collar. [PR0565]



400  
NAVY MULTI

SKU	S	M	L	XL	2XL
SPPSAM-MSP-400					



### GARFIELD | SPPBEER-MSP

Short sleeve jersey featuring a beer can print with a three-button placket and spread collar. [PR0565]



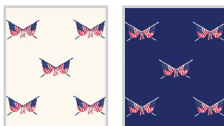
400 NAVY MULTI      506 RED MULTI

SKU	S	M	L	XL	2XL
SPPBEER-MSP-400					
SPPBEER-MSP-506					



### GRANT | SPPCFLAG-MSP

Short sleeve jersey featuring a crossing flags print with a three-button placket and spread collar. [PR0565]

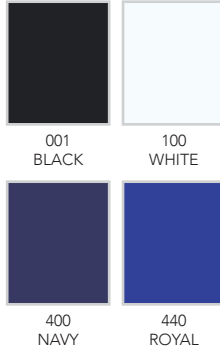


100 WHITE MULTI      400 NAVY MULTI

SKU	S	M	L	XL	2XL
SPPCFLAG-MSP-100					
SPPCFLAG-MSP-400					

**DON | SP016SC-MSP**

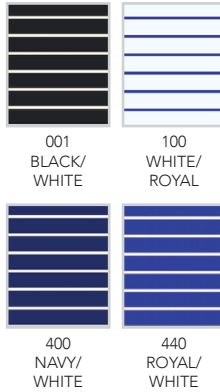
Short sleeve solid **baby pique** featuring a three-button placket and spread collar. [SL0525]



SKU	S	M	L	XL	2XL
SP016SC-MSP-001					
SP016SC-MSP-100					
SP016SC-MSP-400					
SP016SC-MSP-440					

**CLARK | SP7569-MSP**

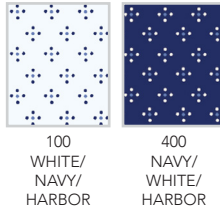
Short sleeve **jersey** featuring a micro stripe with a three-button placket and spread collar. [ST0535]



SKU	S	M	L	XL	2XL
SP7569-MSP-001					
SP7569-MSP-100					
SP7569-MSP-400					
SP7569-MSP-440					

**SAMMY | SPP039-MSP**

Short sleeve **jersey** featuring a neat foulard print with a three-button placket and spread collar. [PR0565]



SKU	S	M	L	XL	2XL
SPP039-MSP-100					
SPP039-MSP-400					



### DONNY | SP076FP-224

Short sleeve solid jersey featuring a three-button placket with stripe detailing and spread collar. [SL0055]



051  
CHARCOAL

100  
WHITE

100A  
WHITE



400  
NAVY

470  
AZURE

611  
LILAC

SKU	S	M	L	XL	2XL
SP076FP-224-051					
SP076FP-224-100					
SP076FPA-224-100					
SP076FP-224-400					
SP076FP-224-470					
SP076FP-224-611					



### JACK | SP025-224

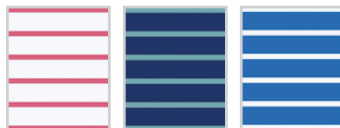
Short sleeve jersey featuring a pin stripe with a three-button placket and spread collar. [ST0535]



051  
CHARCOAL/  
SPEARMINT

051A  
CHARCOAL/  
HIBISCUS

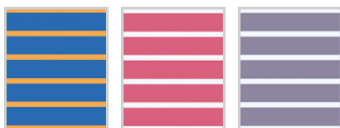
100  
WHITE/  
SPEARMINT



100A  
WHITE/PETAL

400  
NAVY/  
CASCADE

470  
AZURE/  
WHITE



470A  
AZURE/  
HONEY

535  
PETAL/WHITE

611  
LILAC/WHITE



611A  
LILAC/NAVY

SKU	S	M	L	XL	2XL
SP025-224-051					
SP025A-224-051					
SP025-224-100					
SP025A-224-100					
SP025-224-400					
SP025-224-470					
SP025A-224-470					
SP025-224-535					
SP025-224-611					
SP025A-224-611					

**OLIVER | SP131-224**

Short sleeve **jersey** featuring a multi-stripe with a three-button placket and spread collar. [ST0535]



304  
SPEARMINT/  
WHITE/  
CHARCOAL

404  
CASCADE/  
WHITE/  
NAVY

470  
AZURE/  
HONEY/  
WHITE



535  
PETAL/  
WHITE/  
AZURE

611  
LILAC/  
WHITE/  
NAVY

SKU	S	M	L	XL	2XL
SP131-224-304					
SP131-224-404					
SP131-224-470					
SP131-224-535					
SP131-224-611					

**FERGUS | SP361-224**

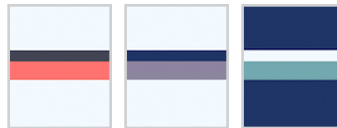
Short sleeve **jersey** featuring a shadow stripe with a three-button placket and spread collar. [ST0535]



051  
CHARCOAL/  
SPEARMINT/  
WHITE

100  
WHITE/  
AZURE/  
PETAL

100A  
WHITE/  
AZURE/  
HONEY



100B  
WHITE/  
HIBISCUS/  
CHARCOAL

100C  
WHITE/  
LILAC/  
NAVY

400  
NAVY/  
CASCADE/  
WHITE



404  
CASCADE/  
NAVY/  
WHITE

470  
AZURE/  
PETAL/  
WHITE

535  
PETAL/  
AZURE/  
WHITE

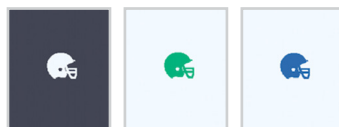
SKU	S	M	L	XL	2XL
SP361-224-051					
SP361-224-100					
SP361A-224-100					
SP361B-224-100					
SP361C-224-100					
SP361-224-400					
SP361-224-404					
SP361-224-470					
SP361-224-535					





### TATE | SPP130-224

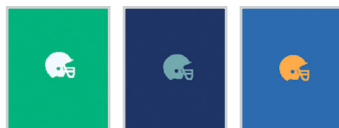
Short sleeve **jersey** featuring a football helmets print with a three-button placket and spread collar. [PR0565]



051  
CHARCOAL/  
WHITE

100  
WHITE/  
SPEARMINT

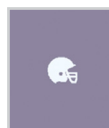
100A  
WHITE/  
AZURE



304  
SPEARMINT/  
WHITE

400  
NAVY/  
CASCADE

470  
AZURE/  
HONEY



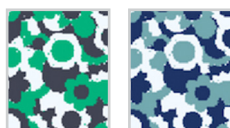
611  
LILAC/  
WHITE

SKU	S	M	L	XL	2XL
SPP130-224-051					
SPP130-224-100					
SPP130A-224-100					
SPP130-224-304					
SPP130-224-400					
SPP130-224-470					
SPP130-224-611					



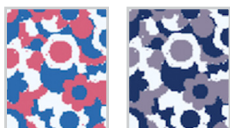
### JAMIE | SPP132-224

Short sleeve **baby pique** featuring a summer flowers print with a three-button placket and spread collar. [PR0565]



304  
SPEARMINT/  
CHARCOAL/  
WHITE

404  
CASCADE/  
NAVY/  
WHITE



535  
PETAL/  
AZURE/  
WHITE

611  
LILAC/  
NAVY/  
WHITE

SKU	S	M	L	XL	2XL
SPP132-224-304					
SPP132-224-404					
SPP132-224-535					
SPP132-224-611					



### HAMISH | SPP133-224

Short sleeve **jersey** featuring a dancing skeletons print with a three-button placket and spread collar. [PR0565]



051  
CHARCOAL/  
WHITE



100  
WHITE/  
CHARCOAL



100A  
WHITE/PETAL



400  
NAVY/WHITE



470  
AZURE/  
WHITE



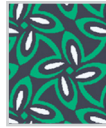
611  
LILAC/NAVY

SKU	S	M	L	XL	2XL
SPP133-224-051					
SPP133-224-100					
SPP133A-224-100					
SPP133-224-400					
SPP133-224-470					
SPP133-224-611					

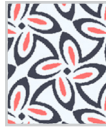


### JAMES | SPP134-224

Short sleeve **jersey** featuring a seamless flower print with a three-button placket and spread collar. [PR0565]



051  
CHARCOAL/  
SPEARMINT/  
WHITE



100  
WHITE/  
CHARCOAL/  
HIBISCUS



100A  
WHITE/  
NAVY/  
CASCADE



100B  
WHITE/  
AZURE/  
HONEY



100C  
WHITE/  
PETAL/  
AZURE



400  
NAVY/  
LILAC/  
WHITE

SKU	S	M	L	XL	2XL
SPP134-224-051					
SPP134-224-100					
SPP134A-224-100					
SPP134B-224-100					
SPP134C-224-100					
SPP134-224-400					



### EVANDER | SPP135-224

Short sleeve **jersey** featuring a dreamcatchers print with a three-button placket and spread collar. [PR0565]



051  
CHARCOAL  
MULTI



100  
WHITE/NAVY  
MULTI



100A  
WHITE/AZURE  
MULTI

SKU	S	M	L	XL	2XL
SPP135-224-051					
SPP135-224-100					
SPP135A-224-100					



### MAXWELL | SPP136-224

Short sleeve **jersey** featuring a soft flames print with a three-button placket and spread collar. [PR0565]



051  
CHARCOAL/  
WHITE



304  
SPEARMINT/  
WHITE



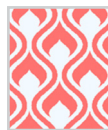
400  
NAVY/WHITE



404  
CASCADE/  
WHITE



470  
AZURE/  
WHITE



517  
HIBISCUS/  
WHITE



535  
PETAL/WHITE



611  
LILAC/WHITE

SKU	S	M	L	XL	2XL
SPP136-224-051					
SPP136-224-304					
SPP136-224-400					
SPP136-224-404					
SPP136-224-470					
SPP136-224-517					
SPP136-224-535					
SPP136-224-611					



### CalLEN | SPP137-224

Short sleeve jersey featuring a wild west print with a three-button placket and spread collar. [PR0565]



051  
CHARCOAL

304  
SPEARMINT

400  
NAVY



404  
CASCADE

470  
AZURE

535  
PETAL



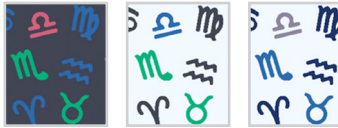
611  
LILAC

SKU	S	M	L	XL	2XL
SPP137-224-051					
SPP137-224-304					
SPP137-224-400					
SPP137-224-404					
SPP137-224-470					
SPP137-224-535					
SPP137-224-611					



### CORMAC | SPP138-224

Short sleeve jersey featuring a zodiac print with a three-button placket and spread collar. [PR0565]



051  
CHARCOAL  
MULTI

100  
WHITE/  
CHARCOAL  
MULTI

100A  
WHITE/NAVY  
MULTI



400  
NAVY MULTI

470  
AZURE MULTI

SKU	S	M	L	XL	2XL
SPP138-224-051					
SPP138-224-100					
SPP138A-224-100					
SPP138-224-400					
SPP138-224-470					



## SHORT SLEEVE BUTTON DOWN

Short sleeve **jersey** featuring a six-button placket, spread collar and chest pocket. [PR0565]



SBD132-224-404  
CASCADE/NAVY/  
WHITE



SBD132-224-535  
PETAL/AZURE/  
WHITE



SBD133-224-051  
CHARCOAL/  
WHITE



SBD135-224-100  
WHITE/NAVY  
MULTI



SBD137-224-400  
NAVY



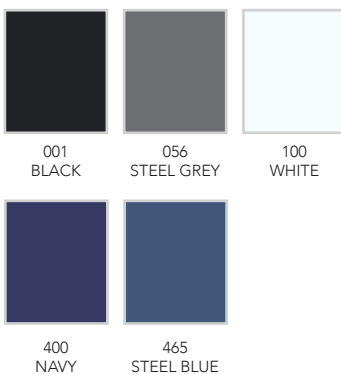
SBD138-224-400  
NAVY MULTI

SKU	S	M	L	XL	2XL
SBD132-224-404					
SBD132-224-535					
SBD133-224-051					
SBD135-224-100					
SBD137-224-400					
SBD138-224-400					



### BROOKS | SP159-MSP

Long sleeve solid jersey features a three-button placket, spread collar, ribbed cuffs, and a rubber thistle logo on the back yoke. [LS0595]

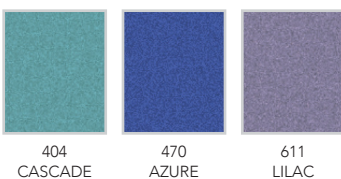


SKU	S	M	L	XL	2XL
SP159-MSP-001					
SP159-MSP-056					
SP159-MSP-100					
SP159-MSP-400					
SP159-MSP-465					



### MAC | SP076MLS-224

Long sleeve mélangé i-Peach jersey features a classic three-button placket, spread collar, and ribbed cuffs. [LS0526]



SKU	S	M	L	XL	2XL
SP076MLS-224-404					
SP076MLS-224-470					
SP076MLS-224-611					



### ALEX | SP2001LS-MSP

Long sleeve lightweight solid 1/4 zip pullover features open cuffs and bottom. Model is constructed using a poly blend fabric that offers four-way stretch, raglan sleeves, storm flap and a rubber thistle logo on the back collar. [LR0056]

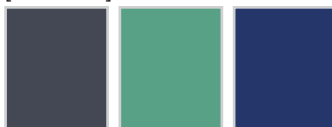
001  
BLACK008  
GRANITE400  
NAVY440  
ROYAL

SKU	S	M	L	XL	2XL
SP2001LS-MSP-001					
SP2001LS-MSP-008					
SP2001LS-MSP-400					
SP2001LS-MSP-440					

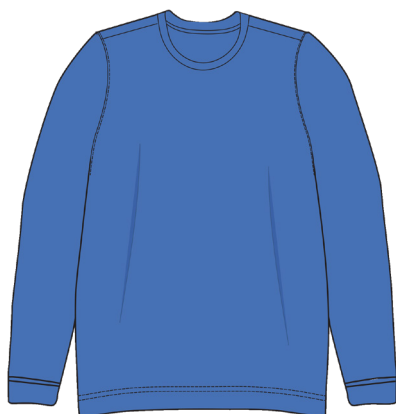


### LOUIE | SP209-224

Long sleeve mid-weight 1/4 zip pullover constructed with our signature performance fleece. Model features raglan sleeve construction, four-way stretch, with open cuffs and bottom. [LR0576]

051  
HEATHER  
CHARCOAL304  
SPEARMINT400  
NAVY470  
AZURE535  
HEATHER  
PETAL611  
LILAC706  
HEATHER  
HONEY

SKU	S	M	L	XL	2XL
SP209-224-051					
SP209-224-304					
SP209-224-400					
SP209-224-470					
SP209-224-535					
SP209-224-611					
SP209-224-706					



### OBAN | SP1662-224

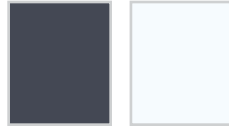
Long sleeve mid-weight crewneck pullover. Model built with all over ribbed fabrication, set-in sleeve construction with a rubber thistle logo on back yoke, and banded cuffs and bottom. [LR0056]

051  
CHARCOAL400  
NAVY470  
AZURE

SKU	S	M	L	XL	2XL
SP1662-224-051					
SP1662-224-400					
SP1662-224-470					

**TRISTAN | SP2106-224**

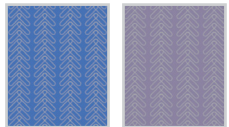
Full zip stretch nylon vest bonded with lightweight fleece lined interior. Offering moisture wicking, quick dry and breathable warmth. Model features full two-way zipper, color matching storm flap, and rubber thistle logo on back collar. [LR0589]

051  
CHARCOAL100  
WHITE404  
CASCADE470  
AZURE

SKU	S	M	L	XL	2XL
SP2106-224-051					
SP2106-224-100					
SP2106-224-404					
SP2106-224-470					

**TEAGUE | SP2216-224**

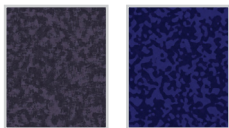
Long sleeve mid-weight 1/4 zip pullover constructed with special jacquard fabrication. Model features raglan sleeve construction, four-way stretch, two lower front pockets with zipper closures, hem tab on wearer's right front seam and open cuffs and bottom. [LR0528]

051  
CHARCOAL400  
NAVY404  
CASCADE470  
AZURE611  
LILAC

SKU	S	M	L	XL	2XL
SP2216-224-051					
SP2216-224-400					
SP2216-224-404					
SP2216-224-470					
SP2216-224-611					

**FINN | SP2412-224**

Long sleeve lightweight sherpa pullover. Model features three-button placket, set-in sleeve construction, high loft anti-pill fabric, two lower front pockets, banded cuffs and bottom, and hem tab on wearer's right pocket. [LR0057]

051  
CHARCOAL400  
NAVY

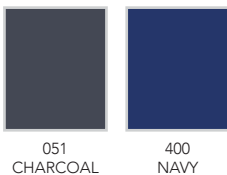
SKU	S	M	L	XL	2XL
SP2412-224-051					
SP2412-224-400					





### LAITH | SP2414-224

Sleeveless full zip vest. Model features full two-way center front zipper, two lower front pockets with zipper closures, and two interior chest pockets. Model offers quilted and insulated nylon chest panels, powerstretch back and side panels, and DWR coating. [LR0057]

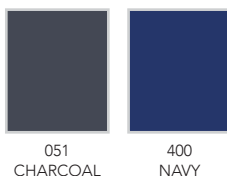


SKU	S	M	L	XL	2XL
SP2414-224-051					
SP2414-224-400					



### MUNGO | SP2418-224

Expedition series, long sleeve hooded full zip jacket. Model features full two-way center front zipper, droptail hem, reflective tape decoration, two lower front pockets with zipper closures, and bonus lower exterior pocket on wearer's back right side. Model offers wind-proof stretch panels under arm and at cuff, fleece backed body, and DWR coated ecofriendly fabric. [LR00531]



SKU	S	M	L	XL	2XL
SP2418-224-051					
SP2418-224-400					



### FRASER | SP6020-224

Long sleeve hoodie pullover offers a new tri-blend jacquard fabric. Model features set-in shoulder construction, set-on kangaroo pocket, banded cuffs and bottom, and embroidered thistle logo on wearer's right wrist. [LR0058]



SKU	S	M	L	XL	2XL
SP6020-224-015					
SP6020-224-051					
SP6020-224-400					
SP6020-224-404					



### CHANDLER | SP213H-224

Long sleeve sweater hoodie. Constructed from a soft and luxurious Cashmere/Merino wool blend. Model features banded cuffs and bottom. [SW00531]



001 BLACK      009 CLOUD      014 GREY FLANNEL



202 CAMEL      333 KIWI      400 NAVY



449 MARINA      468 TURQUOISE      529 MOROCCO

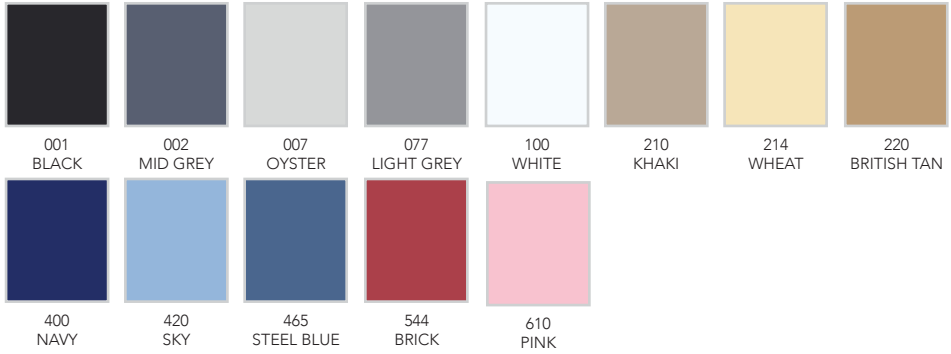


534 ROSE      606 VIOLET      701 BUTTER

SKU	S	M	L	XL	2XL
SP213H-224-001					
SP213H-224-009					
SP213H-224-014					
SP213H-224-202					
SP213H-224-333					
SP213H-224-400					
SP213H-224-449					
SP213H-224-468					
SP213H-224-529					
SP213H-224-534					
SP213H-224-606					
SP213H-224-701					

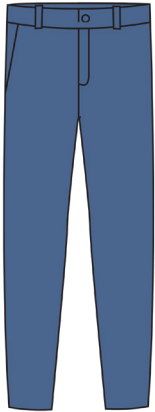
**THE WALKER II | DR702-MSP**

Flat front solid, performance walk shorts. Constructed of "Thistle Stretch" fabric that delivers breathable four-way stretch with quick dry properties. Engineered with 8.5" inseam, deep front pockets, hidden coin pocket, and scorecard back pocket. [BT0045]



**FLAT FRONT PERFORMANCE PANTS | DR752-MSP**

Constructed of "Thistle Stretch" fabric that delivers breathable four-way stretch with quick dry properties. Designed with **flat front** styling, a comfortable modern fit, and the ideal weight for all weather conditions. [BT0047]



## PATRIOTIC

## SOLID



SP016SC-MSP-100  
SP159-MSP-100  
WHITE

SP016SC-MSP-400  
SP159-MSP-400  
NAVY

SP016SC-MSP-440  
ROYAL

SP159-224-465  
STEEL BLUE

SP076FP-224-470  
AZURE

SP076MLS-224-470  
AZURE

## STRIPES



SPSTSD-MSP-100  
WHITE MULTI

SP7569-MSP-100  
WHITE/ROYAL

SP7569-MSP-400  
NAVY/WHITE

SP7569-MSP-440  
ROYAL/WHITE

SP025-224-470  
AZURE/WHITE

## PRINTS



SPPPOP-MSP-100  
WHITE MULTI

SPPRIB-MSP-400  
NAVY MULTI

SPPSAM-MSP-400  
NAVY MULTI

SPPBEER-MSP-400  
NAVY MULTI

SPPBEER-MSP-506  
RED MULTI

SPPFLAG-MSP-100  
WHITE MULTI

SPPFLAG-MSP-400  
NAVY MULTI

SPP039-MSP-100  
WHITE/NAVY/  
HARBOR



SPP039-MSP-400  
NAVY/WHITE/  
HARBOR

SPP130A-224-100  
WHITE/AZURE

SPP133-224-400  
NAVY/WHITE

SPP133-224-470  
AZURE/WHITE

SPP136-224-400  
NAVY/WHITE

SPP136-224-470  
AZURE/WHITE

SPP137-224-400  
SBD137-224-400  
NAVY

SPP137-224-470  
AZURE

## LAYERS



SP2106-224-100  
WHITE

SP2001LS-MSP-400  
SP209-224-400  
SP1662-224-400  
SP2414-224-400  
SP2418-224-400  
NAVY

SP2001LS-MSP-440  
ROYAL

SP209-224-470  
SP1662-224-470  
SP2106-224-470  
AZURE

SP2216-224-400  
NAVY

SP2216-224-470  
AZURE

SP2412-224-400  
NAVY

SP6020-224-400  
NAVY

## SWEATERS



SP213H-224-400  
NAVY

SP213H-224-449  
MARINA

SP213H-224-529  
MOROCCO

## WHITE | AZURE | PETAL | HONEY

## SOLID



SP016SC-MSP-100  
SP159-MSP-100  
WHITE

SP016SC-MSP-440  
ROYAL

SP076FPA-224-310  
WHITE

SP076FP-224-470  
AZURE

SP076MLS-224-470  
AZURE

## STRIPES



SP7569-MSP-100  
WHITE/ROYAL

SP7569-MSP-440  
ROYAL/WHITE

SP025A-224-100  
WHITE/PETAL

SP025-224-470  
AZURE/WHITE

SP025A-224-470  
AZURE/HONEY

SP025-224-535  
PETAL/WHITE

SP131-224-470  
AZURE/HONEY/  
WHITE

SP131-224-535  
PETAL/WHITE/  
AZURE



SP361-224-100  
WHITE/AZURE/  
PETAL

SP361A-224-100  
WHITE/AZURE/  
HONEY

SP361-224-470  
AZURE/PETAL/  
WHITE

SP361-224-535  
PETAL/AZURE/  
WHITE

## PRINTS



SPP130A-224-100  
WHITE/AZURE

SPP130-224-470  
AZURE/HONEY

SPP132-224-535  
SBD132-224-535  
PETAL/AZURE/  
WHITE

SPP133A-224-100  
WHITE/PETAL

SPP133-224-470  
AZURE/WHITE

SPP134B-224-100  
WHITE/AZURE/  
HONEY

SPP134C-224-421  
WHITE/PETAL/  
AZURE

SPP135A-224-100  
WHITE/  
AZURE MULTI

SPP136-224-470  
AZURE/WHITE



SPP136-224-535  
PETAL/WHITE

SPP137-224-470  
AZURE

SPP137-224-535  
PETAL

SPP138-224-470  
AZURE MULTI

## LAYERS



SP2106-224-100  
WHITE

SP2001LS-MSP-440  
ROYAL

SP209-224-470  
SP1662-224-470  
SP2106-224-470  
AZURE

SP209-224-535  
HEATHER PETAL

SP209-224-706  
HEATHER HONEY

SP2216-224-470  
AZURE

## SWEATERS



SP213H-224-014  
GREY FLANNEL

SP213H-224-202  
CAMEL

SP213H-224-449  
MARINA

SP213H-224-534  
ROSE

SP213H-224-701  
BUTTER

## WHITE | NAVY | CASCADE | LILAC

## SOLID



SP016SC-MSP-100  
SP159-MSP-100  
WHITE

SP016SC-MSP-400  
SP159-MSP-400  
NAVY

SP159-MSP-465  
STEEL BLUE

SP076FP-224-400  
NAVY

SP076FP-224-611  
LILAC

SP076MLS-224-404  
CASCADE

SP076MLS-224-611  
LILAC

## STRIPES



SP7569-MSP-400  
NAVY/WHITE

SP025-224-400  
NAVY/CASCADE

SP025-224-611  
LILAC/WHITE

SP025A-224-611  
LILAC/NAVY

SP131-224-404  
CASCADE/WHITE/  
NAVY

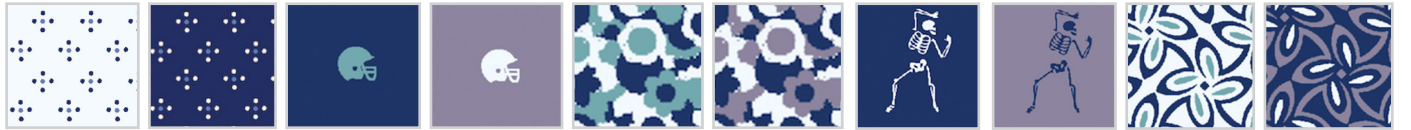
SP131-224-611  
LILAC/WHITE/  
NAVY

SP361C-224-100  
WHITE/LILAC/  
NAVY

SP361-224-400  
NAVY/CASCADE/  
WHITE

SP361-224-404  
CASCADE/NAVY/  
WHITE

## PRINTS



SP039-MSP-100  
WHITE/NAVY/  
HARBOR

SPP039-MSP-400  
NAVY/WHITE/  
HARBOR

SPP130-224-400  
NAVY/CASCADE

SPP130-224-611  
LILAC/WHITE

SPP132-224-404  
SBD132-224-404  
CASCADE/NAVY/  
WHITE

SPP132-224-611  
LILAC/NAVY/  
WHITE

SPP133-224-400  
NAVY/WHITE

SPP133-224-611  
LILAC/NAVY

SPP134A-224-100  
WHITE/NAVY/  
CASCADE

SPP134-224-400  
NAVY/LILAC/  
WHITE



SPP135-224-100  
SBD135-224-100  
WHITE/NAVY  
MULTI

SPP136-224-400  
NAVY/WHITE

SPP136-224-404  
CASCADE/  
WHITE

SPP136-224-611  
LILAC/WHITE

SPP137-224-400  
SBD137-224-400  
NAVY

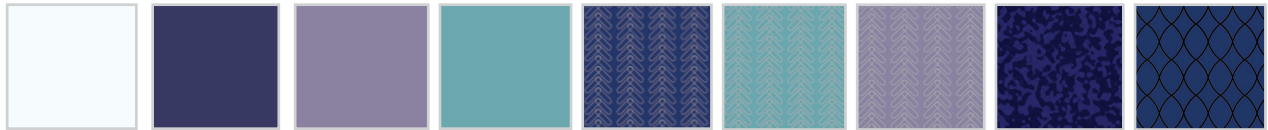
SPP137-224-404  
CASCADE

SPP137-224-611  
LILAC

SPP138A-224-100  
WHITE/NAVY  
MULTI

SPP138-224-400  
SBD138-224-400  
NAVY MULTI

## LAYERS



SP2106-224-100  
WHITE

SP2001LS-MSP-400  
SP209-224-400  
SP1662-224-400  
SP2414-224-400  
SP2418-224-400  
NAVY

SP209-224-611  
LILAC

SP2106-224-404  
CASCADE

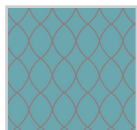
SP2216-224-400  
NAVY

SP2216-224-404  
CASCADE

SP2216-224-611  
LILAC

SP2412-224-400  
NAVY

SP6020-224-400  
NAVY



SP6020-224-404  
CASCADE

## SWEATERS



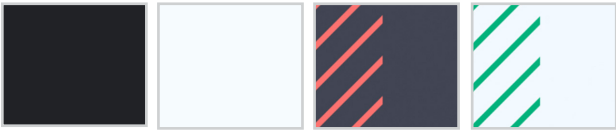
SP213H-224-014  
GREY FLANNEL

SP213H-224-400  
NAVY

SP213H-224-468  
TURQUOISE

SP213H-224-606  
VIOLET

SOLID



SP016SC-MSP-001  
SP159-MSP-001  
BLACK

SP016SC-MSP-100  
SP159-MSP-100  
WHITE

SP076FP-224-051  
CHARCOAL

SP076FP-224-100  
WHITE

STRIPES



SP7569-MSP-001  
BLACK/WHITE

SP025-224-051  
CHARCOAL/  
SPEARMINT

SP025A-224-051  
CHARCOAL/  
HIBISCUS

SP025-224-100  
WHITE/SPEARMINT

SP131-224-304  
SPEARMINT/  
WHITE/CHARCOAL

SP361-224-051  
CHARCOAL/  
SPEARMINT/WHITE

SP361B-224-100  
WHITE/HIBISCUS/  
CHARCOAL

PRINTS



SPP130-224-051  
CHARCOAL/WHITE

SPP130-224-100  
WHITE/SPEARMINT

SPP130-224-304  
SPEARMINT/WHITE

SPP132-224-304  
SPEARMINT/  
CHARCOAL/WHITE

SPP133-224-051  
SBD133-224-051  
CHARCOAL/WHITE

SPP133-224-100  
WHITE/CHARCOAL

SPP134-224-051  
CHARCOAL/  
SPEARMINT/WHITE

SPP134-224-100  
WHITE/  
CHARCOAL/  
HIBISCUS

SPP135-224-051  
CHARCOAL MULTI



SPP136-224-051  
CHARCOAL/WHITE

SPP136-224-304  
SPEARMINT/WHITE

SPP136-224-517  
HIBISCUS/WHITE

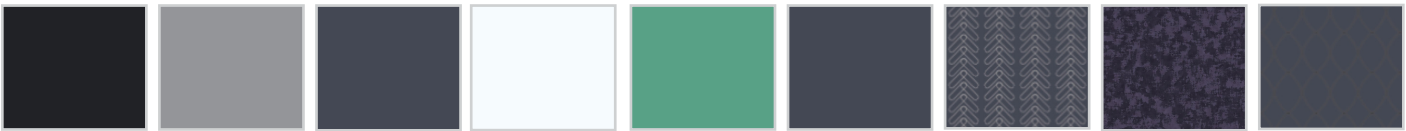
SPP137-224-051  
CHARCOAL

SPP137-224-304  
SPEARMINT

SPP138-224-051  
CHARCOAL MULTI

SPP138-224-100  
WHITE/CHARCOAL  
MULTI

LAYERS



SP2001LS-MSP-001  
BLACK

SP2001LS-MSP-008  
GRANITE

SP209-224-051  
HEATHER  
CHARCOAL

SP2106-224-100  
WHITE

SP209-224-304  
SPEARMINT

SP1662-224-051  
SP2106-224-051  
SP2414-224-051  
SP2418-224-051  
CHARCOAL

SP2216-224-051  
CHARCOAL

SP2412-224-051  
CHARCOAL

SP6020-224-051  
CHARCOAL

SWEATERS



SP213H-224-001  
BLACK

SP213H-224-014  
GREY FLANNEL

SP213H-224-333  
KIWI

SP213H-224-529  
MOROCCO

## Order / Logo Notes:

### Logo Placement Options:

- Left Chest
- Left Sleeve
- Left Collar
- Right Chest
- Right Sleeve
- Right Collar
- Yoke
- No Logo

### Logo Colorway Options:

- Color Coordinate
- Club Colors
- Tonal Light
- Tonal Dark
- Contrast
- Tone on Tone

For more information visit: [www.donaldross.com/green-grass/](http://www.donaldross.com/green-grass/)

Contact your sales representative or contact customer service

Via Phone: 910-944-3114

Via Email: [customerservice@donaldross.com](mailto:customerservice@donaldross.com)



# Donald Ross Tournament Program



---

---

Let our DR Team handle your tournament needs!

---

---

## *Benefits*

- No Inventory Commitment
  - One Price Per Player
- All Shipping Costs Included
- Complimentary Donald Ross Shopping Bags
- Fully Serviced by Donald Ross Representatives
  - One Invoice

# Donald Ross Tournament Program

## *Event Options*

### *Microsite | Customized E-Commerce Shopping Experience*

A custom microsite built for your participants to select their gift within a set event budget. Our Team guides you through the process from start to finish.

### *Drop Ship | Customized Shopping Experience*

Our Team is on-site to administrate a hassle-free experience for your participants to choose their gift from a selection of product. Orders are taken and then shipped to the participants desired address in our special DR packaging.

All-inclusive pricing includes embroidery.

### *ThistleSpree | Full-Service Online Shopping Experience*

An online shopping experience for participants to choose their gift. Ability to include multiple categories of product. Great for flexible budgeting and opportunity for overspend.

### *Giveaway | Full-Service Shopping Experience*

A full-service shopping experience for your participants. Our Team is on-site to handle the gifting portion of your event. All-inclusive pricing includes all product, shipping, staffing, and Donald Ross gift bags.



# Donald Ross

## Tournament Program

*Why choose Donald Ross for your event?*

- One **ALL INCLUSIVE** price per player. This includes one logo, all shipping, alphabetical sorting and packaging, gift bags, and a dedicated DR Team Member to administer and service your event from start to finish.
- Power of the gift of choice – allow participants to choose their own gift
- Product selections tailored specifically to your event budget or needs
- Sport and Classic product offered to accommodate your participants' fit needs
- Your event order is given priority – unmatched turnaround time
  - Exceptional customer service
  - Simplified billing – ONE invoice



For more information, please contact us via:

Email: [events@donaldross.com](mailto:events@donaldross.com)

or

Phone: (910) 944-3114