



Donald Ross  
SPORTSWEAR

SPRING | SUMMER  
2024 Catalog



# Donald Ross

SPORTSWEAR

## TABLE OF CONTENTS

CLASSIC FIT GUIDE | 3

CLASSIC PATRIOTIC COLLECTION | 4 - 6

CLASSIC KNIT SHIRTS | 7 - 13

CLASSIC LONG SLEEVE SHIRTS | 14

CLASSIC WOVENS | 15

CLASSIC LAYERS | 16 - 18

BOTTOMS | 19

CLASSIC COLOR STORIES | 20 - 23

ORDER/LOGO NOTES | 24 - 25

**Green Grass Site:**

[www.donaldross.com/green-grass/](http://www.donaldross.com/green-grass/)

**Customer Service:**

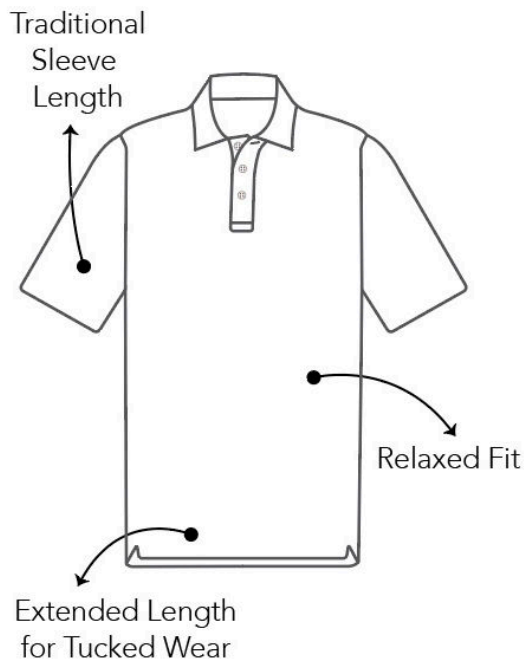
Phone: 910-944-3114

Email: [customerservice@donaldross.com](mailto:customerservice@donaldross.com)

## Classic Fit

Classic garments offer a generous shape through the body with traditional sleeve length. Fit for those who enjoy a slightly oversized, looser fit.

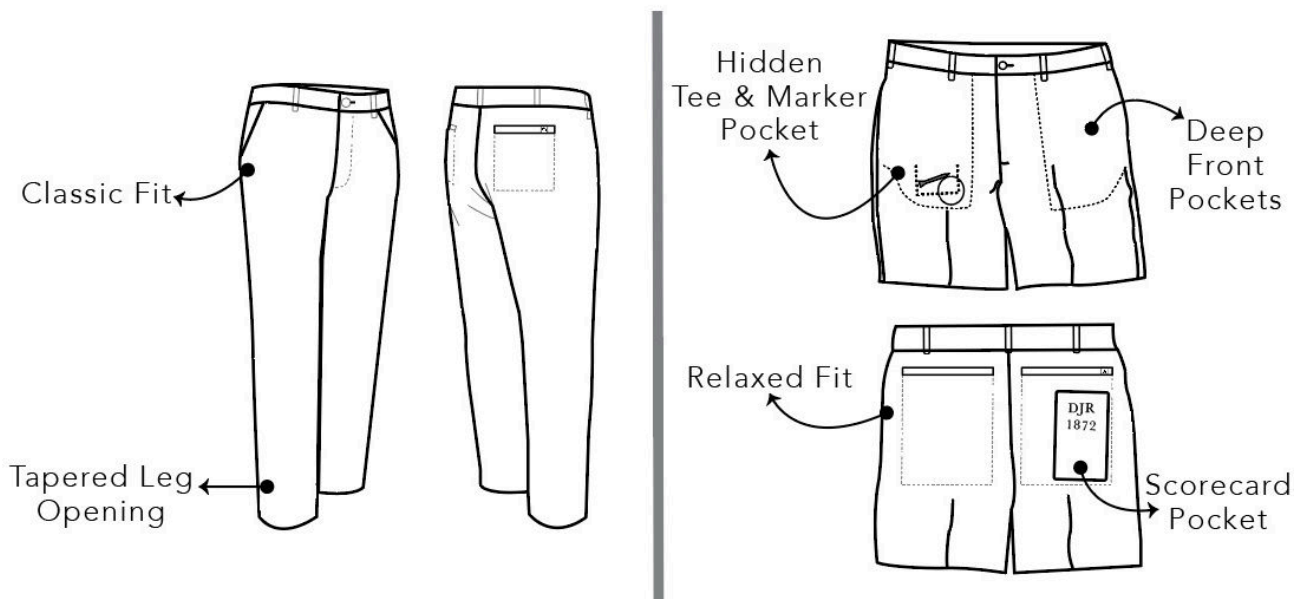
	Weight (lbs)	Sport Coat Size
Small	150-170	38-40
Medium	170-195	40-42
Large	195-225	43-46
X-Large	225-260	47-50
XX-Large	260-280	52-54
XXX-Large	280+	54+



## Bottoms

Pant Inseam Options 30 & 32

<i>Pants</i>	32	X	34	X	36	38	40	42	44
<i>Shorts</i>	32	33	34	35	36	38	40	42	44





**LAMAR | DRSTSD-MSP:**

Short sleeve **jersey** featuring a space dye feeder stripe with a classic three-button placket and spread collar.



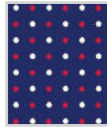
100  
WHITE MULTI

SKU	S	M	L	XL	2XL	3XL
DRSTSD-MSP-100						



**OMAHA | DRPDOT-MSP:**

Short sleeve **jersey** featuring a dots print with a classic three-button placket and spread collar.



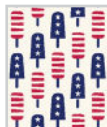
400  
NAVY MULTI

SKU	S	M	L	XL	2XL	3XL
DRPDOT-MSP-400						



**HYDE | DRPPOP-MSP:**

Short sleeve **jersey** featuring a popsicles print with a classic three-button placket and spread collar.



100  
WHITE MULTI

SKU	S	M	L	XL	2XL	3XL
DRPPOP-MSP-100						



**HOPE | DRPRIB-MSP:**

Short sleeve **jersey** featuring a ribbons print with a classic three-button placket and spread collar.



400  
NAVY MULTI

SKU	S	M	L	XL	2XL	3XL
DRPRIB-MSP-400						



**MASON | DRPSAM-MSP:**

Short sleeve **jersey** featuring an Uncle Sam's hat print with a classic three-button placket and spread collar.



400  
NAVY MULTI

SKU	S	M	L	XL	2XL	3XL
DRPSAM-MSP-400						



**MORELAND | DRPBEER-MSP:**

Short sleeve **jersey** featuring a beer can print with a classic three-button placket and spread collar.



400  
NAVY MULTI      506  
RED MULTI

SKU	S	M	L	XL	2XL	3XL
DRPBEER-MSP-400						
DRPBEER-MSP-506						



**PT. PLEASANT | DRPCLFAG-MSP:**

Short sleeve jersey featuring a crossing flags print with a classic three-button placket and spread collar.



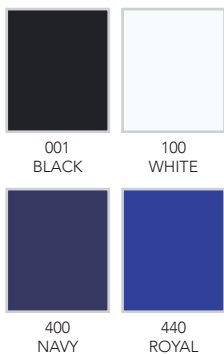
100 WHITE MULTI      400 NAVY MULTI

SKU	S	M	L	XL	2XL	3XL
DRPCFLAG-MSP-100						
DRPCFLAG-MSP-400						



**DR016SC-MSP:**

Short sleeve solid **baby pique** features a classic three-button placket and self-collar.

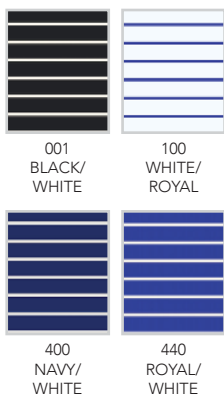


SKU	S	M	L	XL	2XL	3XL
DR016SC-MSP-001						
DR016SC-MSP-100						
DR016SC-MSP-400						
DR016SC-MSP-440						



**DR7569-MSP:**

Short sleeve **jersey** featuring a pencil stripe with classic three-button placket and self-collar.

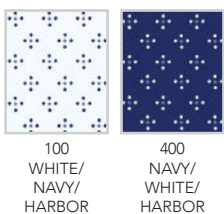


SKU	S	M	L	XL	2XL	3XL
DR7569-MSP-001						
DR7569-MSP-100						
DR7569-MSP-400						
DR7569-MSP-440						



**DRP039-MSP:**

Short sleeve **jersey** featuring a neat foulard print with a classic three-button placket and self-collar.



SKU	S	M	L	XL	2XL	3XL
DRP039-MSP-100						
DRP039-MSP-400						



**BOSTON | DR076M-124:**

Short sleeve solid **mélange jersey** features a classic three-button placket and spread collar.



SKU	S	M	L	XL	2XL	3XL
DR076M-124-001						
DR076M-124-044						
DR076M-124-380						
DR076M-124-400						
DR076M-124-450						
DR076M-124-610						
DR076M-124-642						



**NANTUCKET | DR151-124:**

Short sleeve **jersey** featuring a **mélange shadow stripe** with a classic three-button placket and spread collar.



SKU	S	M	L	XL	2XL	3XL
DR151-124-001						
DR151-124-100						
DR151A-124-100						
DR151B-124-100						
DR151-124-380						
DR151-124-400						
DR151-124-450						
DR151-124-610						
DR151-124-642						





**NASHVILLE | DR247-124:**

Short sleeve jersey featuring a multi stripe with a classic three-button placket and spread collar.



100  
WHITE  
MULTI

450  
COBALT  
MULTI

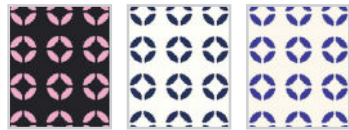
642  
JUNIPER  
MULTI

SKU	S	M	L	XL	2XL
DR247-124-100					
DR247-124-450					
DR247-124-642					



**DARTMOUTH | DRP081-124:**

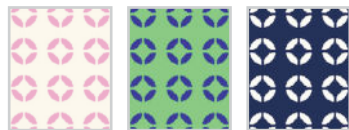
Short sleeve jersey featuring a zegna circle print with a classic three-button placket and spread collar.



001  
BLACK/  
PINK

100  
WHITE/  
NAVY

100A  
WHITE/  
COBALT



100B  
WHITE/  
PINK

380  
BERMUDA/  
COBALT

400  
NAVY/  
WHITE



450  
COBALT/  
BERMUDA

SKU	S	M	L	XL	2XL	3XL
DRP081-124-001						
DRP081-124-100						
DRP081A-124-100						
DRP081B-124-100						
DRP081-124-380						
DRP081-124-400						
DRP081-124-450						



**ATLANTA | DRP082-124:**

Short sleeve **jersey** featuring a flames print with a classic three-button placket and spread collar.



100  
WHITE/  
BLACK

100A  
WHITE/  
COBALT

400  
NAVY/  
WHITE



450  
COBALT/  
WHITE

642  
JUNIPER/  
WHITE

SKU	S	M	L	XL	2XL	3XL
DRP082-124-100						
DRP082A-124-100						
DRP082-124-400						
DRP082-124-450						
DRP082-124-642						



**SARASOTA | DRP083-124:**

Short sleeve **jersey** featuring a peppers print with a classic three-button placket and spread collar.



001  
BLACK/  
PINK

044  
SLATE/  
BLACK

100  
WHITE/  
NAVY



380  
BERMUDA/  
COBALT

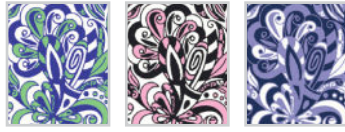
450  
COBALT/  
WHITE

SKU	S	M	L	XL	2XL
DRP083-124-001					
DRP083-124-044					
DRP083-124-100					
DRP083-124-380					
DRP083-124-450					



**BOCA | DRP084-124:**

Short sleeve jersey featuring a paisley print with a classic three-button placket and spread collar.



100  
WHITE/  
BERMUDA/  
COBALT

100A  
WHITE/  
PINK/  
BLACK

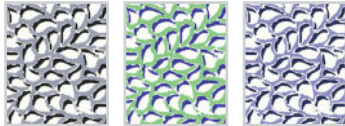
400  
NAVY/  
WHITE/  
JUNIPER

SKU	S	M	L	XL	2XL
DRP084-124-100					
DRP084A-124-100					
DRP084-124-400					



**WINCHESTER | DRP085-124:**

Short sleeve jersey featuring a water drops print with a classic three-button placket and spread collar.



044  
SLATE  
MULTI

380  
BERMUDA  
MULTI

642  
JUNIPER  
MULTI

SKU	S	M	L	XL	2XL	3XL
DRP085-124-044						
DRP085-124-380						
DRP085-124-642						



**CHICAGO | DRP086-124:**

Short sleeve **mélange jersey** featuring a dog walker print with a classic three-button placket and spread collar.



044  
SLATE/  
BLACK



100  
WHITE/  
COBALT



100A  
WHITE/  
NAVY



400  
NAVY/  
WHITE



450  
COBALT/  
BERMUDA



610  
PINK/  
BLACK



642  
JUNIPER/  
NAVY

SKU	S	M	L	XL	2XL
DRP086-124-044					
DRP086-124-100					
DRP086A-124-100					
DRP086-124-400					
DRP086-124-450					
DRP086-124-610					
DRP086-124-642					



**MIAMI | DRP087-124:**

Short sleeve **jersey** featuring a toucan print with a classic three-button placket and spread collar.



001  
BLACK  
MULTI



100  
WHITE/  
NAVY  
MULTI



100A  
WHITE/  
COBALT  
MULTI



610  
PINK  
MULTI



642  
JUNIPER  
MULTI

SKU	S	M	L	XL	2XL	3XL
DRP087-124-001						
DRP087-124-100						
DRP087A-124-100						
DRP087-124-610						
DRP087-124-642						



**ATHENS | DRP088-124:**

Short sleeve jersey featuring a safari print with a classic three-button placket and spread collar.



100  
WHITE/  
BLACK

400  
NAVY/  
WHITE

450  
COBALT/  
WHITE

SKU	S	M	L	XL	2XL	3XL
DRP088-124-100						
DRP088-124-400						
DRP088-124-450						



**CHARLOTTE | DRP089-124:**

Short sleeve jersey featuring a striped tees print with a classic three-button placket and spread collar.



001  
BLACK  
MULTI

400  
NAVY  
MULTI

450  
COBALT  
MULTI

SKU	S	M	L	XL	2XL	3XL
DRP089-124-001						
DRP089-124-400						
DRP089-124-450						



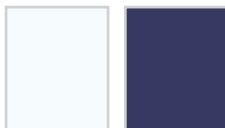
**DR157-MSP:**

Long sleeve solid **jersey** mock neck layering shirt with ribbed cuffs and neck.



001  
BLACK

056  
STEEL GREY



100  
WHITE

400  
NAVY

SKU	S	M	L	XL	2XL	3XL
DR157-MSP-001						
DR157-MSP-056						
DR157-MSP-100						
DR157-MSP-400						



**DR159-MSP:**

Long sleeve solid **jersey** features a classic three-button placket, self-collared, and ribbed cuffs.



001  
BLACK

056  
STEEL GREY

100  
WHITE



400  
NAVY

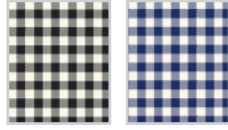
465  
STEEL BLUE

SKU	S	M	L	XL	2XL	3XL
DR159-MSP-001						
DR159-MSP-056						
DR159-MSP-100						
DR159-MSP-400						
DR159-MSP-465						



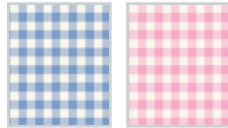
**DR605-MSP:**

Donald Ross woven shirts are constructed from a nylon/spandex blend for comfort and mobility, with a gingham check print. Features long sleeves, traditional eight-button front, two-button adjustable cuffs, and button down collar.



001  
BLACK/  
WHITE

400  
NAVY/  
WHITE



420  
SKY/  
WHITE

610  
PINK/  
WHITE

SKU	S	M	L	XL	2XL
DR605-MSP-001					
DR605-MSP-400					
DR605-MSP-420					
DR605-MSP-610					



**PARKLAND PULLOVER | DR2001LS-MSP:**

Long sleeve lightweight solid 1/2 zip pullover features set-in sleeve construction, storm flap, as well as self-fabric banded cuffs and waistband. Model is constructed with a poly blend fabric that offers four-way stretch to provide all day comfort.

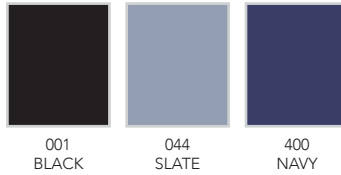


SKU	S	M	L	XL	2XL	3XL
DR2001LS-MSP-001						
DR2001LS-MSP-008						
DR2001LS-MSP-400						
DR2001LS-MSP-440						



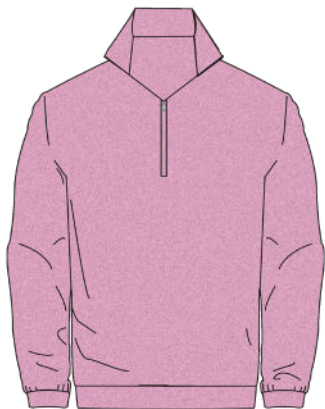
**DUNBAR PULLOVER | DR2316-124:**

Long sleeve ultra lightweight 1/2 zip pullover constructed from a polyester-spandex blend that offers full four-way stretch, DWR protection, and quick dry qualities. Model features lower front pockets, logoed storm flap, rubber thistle logo on back collar, and draw string closure bottom.



SKU	S	M	L	XL	2XL
DR2316-124-001					
DR2316-124-044					
DR2316-124-400					





**FALKIRK PULLOVER | DR336LS-124:**

Long-sleeve mid-weight 1/2 zip pullover constructed with a polyester-spandex blend that offers four-way stretch and breathable warmth. Model features set-in sleeve construction, a rubber thistle logo on the back collar, as well as banded cuffs & bottom.

SKU	S	M	L	XL	2XL
DR336LS-124-095					
DR336LS-124-100					
DR336LS-124-380					
DR336LS-124-400					
DR336LS-124-450					
DR336LS-124-610					
DR336LS-124-642					

095 HEATHER GREY	100 WHITE	380 HEATHER BERMUDA
400 HEATHER- NAVY	450 HEATHER COBALT	610 HEATHER PINK
642 HEATHER JUNIPER		



**FALKIRK VEST | DR336V-124:**

Sleeveless mid-weight 1/2 zip vest constructed with a polyester-spandex blend that offers four-way stretch and breathable warmth. Model features a rubber thistle logo on the back collar, as well as a banded bottom.

SKU	S	M	L	XL	2XL
DR336V-124-095					
DR336V-124-100					
DR336V-124-380					
DR336V-124-400					
DR336V-124-450					
DR336V-124-642					

095 HEATHER GREY	100 WHITE	380 HEATHER BERMUDA
400 HEATHER NAVY	450 HEATHER COBALT	642 HEATHER JUNIPER

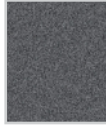


**THE YEAR ROUNDER HOODIE | DR402-124:**

Long sleeve hoodie pullover constructed with our signature lightweight performance fleece. Model features dual colored cord strings, kangaroo pocket, embroidered thistle logo on right wrist, as well as banded cuffs and waistband.



001  
BLACK



095  
HEATHER  
GREY



450  
HEATHER  
COBALT



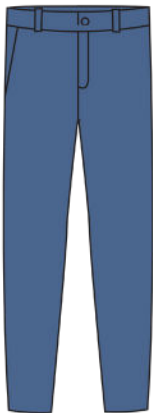
642  
HEATHER  
JUNIPER

SKU	S	M	L	XL	2XL
DR402-124-001					
DR402-124-095					
DR402-124-450					
DR402-124-642					



**THE WALKER II | DR702-MSP:**

Flat front solid, performance walk shorts. Constructed of "Thistle Stretch" fabric that delivers breathable four-way stretch with quick dry properties. Engineered with 8.5" inseam, deep front pockets, hidden coin pocket, and scorecard back pocket.



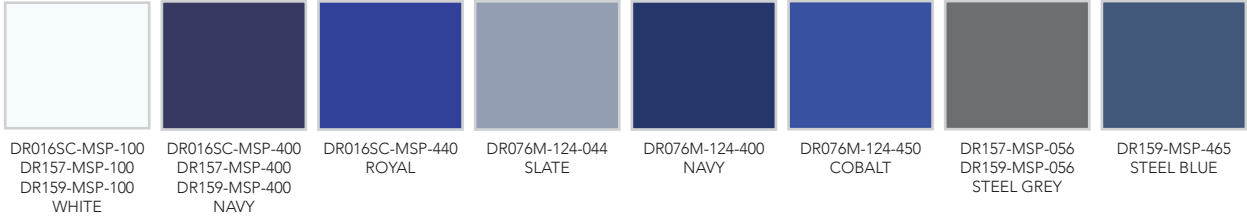
**FLAT FRONT PERFORMANCE PANTS | DR752-MSP:**

Constructed of "Thistle Stretch" fabric that delivers breathable four-way stretch with quick dry properties. Designed with **flat front** styling, a comfortable modern fit, and the ideal weight for all weather conditions.

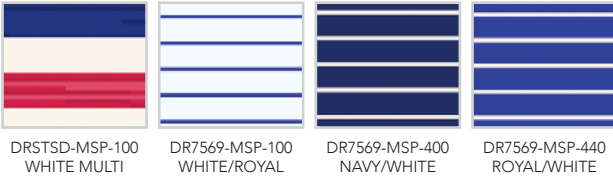


PATRIOTIC

SOLID



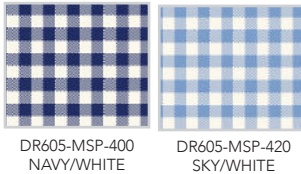
STRIPES



PRINTS



WOVENS



LAYERS



BLACK | WHITE | SLATE | PINK

SOLID



STRIPES



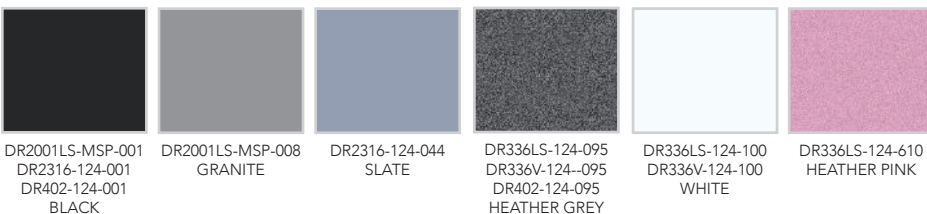
PRINTS



WOVENS



LAYERS



WHITE | NAVY | JUNIPER | SUN

SOLID



DR016SC-MSP-100  
DR157-MSP-100  
DR159-MSP-100  
WHITE

DR016SC-MSP-400  
DR076M-124-400  
DR157-MSP-400  
DR159-MSP-400  
NAVY

DR076M-124-642  
JUNIPER

DR159-MSP-465  
STEEL BLUE

STRIPES



DR7569-MSP-400  
NAVY/WHITE

DR151A-124-100  
WHITE/JUNIPER/  
NAVY

DR151-124-400  
NAVY/WHITE/  
JUNIPER

DR151-124-642  
JUNIPER/SUN/  
NAVY

DR247-124-642  
JUNIPER MULTI

PRINTS



DRP039-MSP-100  
WHITE/NAVY/  
HARBOR

DRP039-MSP-400  
NAVY/WHITE/  
HARBOR

DRP081-124-100  
WHITE/NAVY

DRP081-124-400  
NAVY/WHITE

DRP082-124-400  
NAVY/WHITE

DRP082-124-642  
JUNIPER/WHITE

DRP083-124-100  
WHITE/NAVY

DRP084-124-400  
NAVY/WHITE/  
JUNIPER

DRP085-124-642  
JUNIPER MULTI

DRP086-124-100  
WHITE/NAVY

DRP086-124-400  
NAVY/WHITE

DRP086-124-642  
JUNIPER/NAVY

DRP087-124-100  
WHITE/NAVY  
MULTI

DRP087-124-642  
JUNIPER MULTI

DRP088-124-400  
NAVY/WHITE

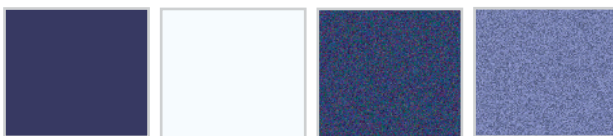
DRP089-124-400  
NAVY MULTI

WOVENS



DR605-MSP-400  
NAVY/WHITE

LAYERS



DR2001LS-MSP-400  
DR2316-124-400  
NAVY

DR336LS-124-100  
DR336V-124-100  
WHITE

DR336LS-124-400  
DR336V-124-400  
HEATHER NAVY

DR336LS-124-642  
DR336V-124-642  
DR402-124-642  
HEATHER JUNIPER

SOLID



DR016SC-MSP-100  
DR157-MSP-100  
DR159-MSP-100  
WHITE

DR016SC-MSP-440  
ROYAL

DR076M-124-380  
BERMUDA

DR076M-124-450  
COBALT

STRIPES



DR7569-MSP-100  
WHITE/ROYAL

DR7569-MSP-440  
ROYAL/WHITE

DR151-124-100  
WHITE/COBALT/  
BERMUDA

DR151-124-380  
BERMUDA/WHITE/  
COBALT

DR151-124-450  
COBALT/WHITE/  
BERMUDA

DR247-124-450  
COBALT MULTI

PRINTS



DRP081A-124-100  
WHITE/COBALT

DRP081-124-380  
BERMUDA/COBALT

DRP081-124-450  
COBALT/BERMUDA

DRP082A-124-100  
WHITE/COBALT

DRP082-124-450  
COBALT/WHITE

DRP083-124-380  
BERMUDA/COBALT

DRP083-124-450  
COBALT/WHITE

DRP084-124-100  
WHITE/BERMUDA/  
COBALT

DRP085-124-380  
BERMUDA MULTI

DRP086A-124-100  
WHITE/COBALT

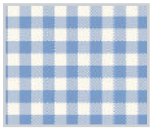
DRP086-124-450  
COBALT/BERMUDA

DRP087A-124-100  
WHITE/COBALT  
MULTI

DRP088-124-450  
COBALT/WHITE

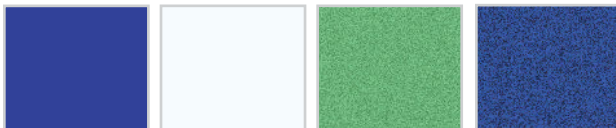
DRP089-124-450  
COBALT MULTI

WOVENS



DR605-MSP-420  
SKY/WHITE

LAYERS



DR2001LS-MSP-440  
ROYAL

DR336LS-124-100  
DR336V-124-100  
WHITE

DR336LS-124-380  
DR336V-124-380  
HEATHER  
BERMUDA

DR336LS-124-450  
DR336V-124-450  
DR402-124-450  
HEATHER  
COBALT

## Order / Logo Notes:

### Logo Placement Options:

- Left Chest
- Left Sleeve
- Left Collar
- Right Chest
- Right Sleeve
- Right Collar
- Yoke
- No Logo

### Logo Colorway Options:

- Color Coordinate
- Club Colors
- Tonal Light
- Tonal Dark
- Contrast
- Tone on Tone

For more information visit: [www.donaldross.com/green-grass/](http://www.donaldross.com/green-grass/)

Contact your sales representative or contact customer service

Via Phone: 910-944-3114

Via Email: [customerservice@donaldross.com](mailto:customerservice@donaldross.com)