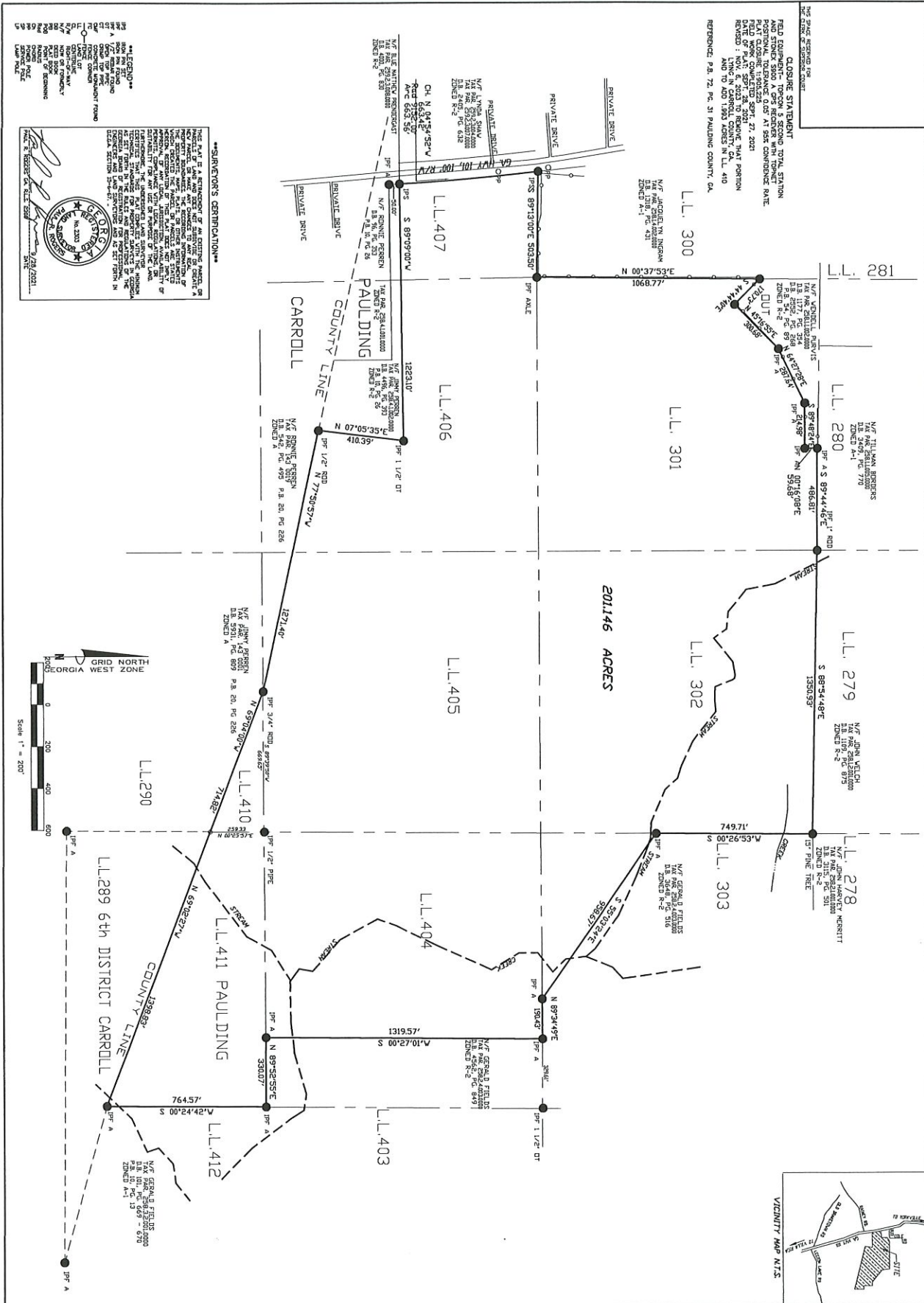


ATTACHMENT 4

NW GEORGIA LAND HOLDINGS, LLC
BOUNDARY SURVEY



RETRACEMENT SURVEY - NORTH GEORGIA LAND HOLDINGS
 LOCATED IN LAND LOTS 301, 302, 303, 404, 405, 406, 407, 410, 411
 1st DISTRICT, 3rd SECTION, PAULDING COUNTY GEORGIA
 TAX PARCEL 258.1.3.001.0000 - PAULDING COUNTY

REVISIONS:

NO.	DATE	DESCRIPTION

RHODES ENGINEERING SERVICES, INC.
 CIVIL ENGINEERS & LAND SURVEYORS
 645 HENDERSON DRIVE, SUITE 2
 CARTERSVILLE, GEORGIA 30120
 PHONE: 770-386-7616 FAX: 770-386-7617

1
 OF