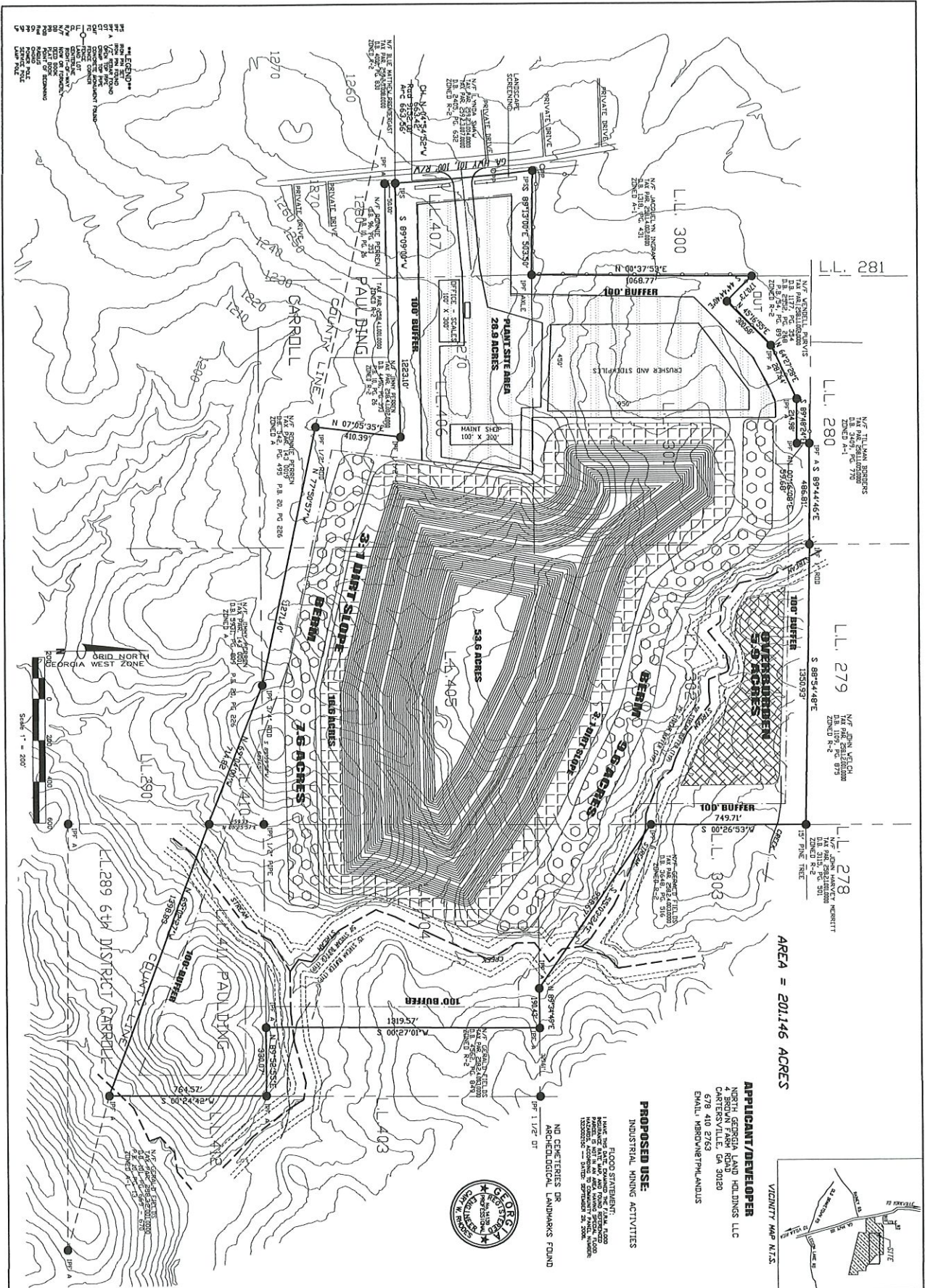


ATTACHMENT 6

NW GEORGIA LAND HOLDINGS, LLC
SITE PLAN

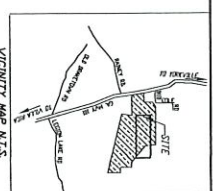


AREA = 201146 ACRES

APPLICANT/DEVELOPER
 NORTH GEORGIA LAND HOLDINGS LLC
 4 BROWN LANE ROAD
 CANTERSVILLE, GEORGIA 30120
 EMAIL: NGEORGE@NGLH.COM

PROPOSED USE:
 FLOOD STRATEGIC
 INDUSTRIAL MINING ACTIVITIES

NO CEQUITIES OR
 ARCHAEOLOGICAL LANDMARKS FOUND



PRELIMINARY MINE PLAN - NORTH GEORGIA LAND HOLDINGS
 LOCATED IN LAND LOTS 301, 302, 303, 404, 405, 406, 407, 410, 411
 1st DISTRICT, 3rd SECTION, PAULDING COUNTY GEORGIA AND
 TAX PARCEL 25&1.3.001.0000 - PAULDING COUNTY AND 144 0069 CARROLL COUNTY

REVISIONS:	
NO.	DESCRIPTION:

RHODES ENGINEERING SERVICES, INC.
 CIVIL ENGINEERS & LAND SURVEYORS
 645 HENDERSON DRIVE, SUITE 2
 CANTERSVILLE, GEORGIA 30120
 PHONE: 770-386-7616 FAX: 770-386-7617