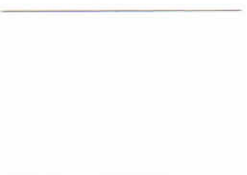


## DURA TECH™ 5000 - Premium Fluoropolymer (PVDF) Coating



**ZINCALUME® Plus\***  
SRI: 65 • 24ga, 22ga & 20ga



**Cool Regal White**  
SRI: 88 • 24ga & 22ga



**Cool Parchment**  
SRI: 58 • 24ga & 22ga



**Cool Sierra Tan**  
SRI: 55 • 24ga & 22ga



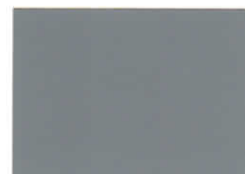
**Cool Terra-Cotta**  
SRI: 41 • 24ga & 22ga



**Cool Red**  
SRI: 46 • 24ga & 22ga



**Cool Colonial Red**  
SRI: 35 • 24ga & 22ga



**Cool Old Town Gray**  
SRI: 43 • 24ga & 22ga



**Cool Zinc Gray**  
SRI: 39 • 24ga & 22ga



**Cool Weathered Copper**  
SRI: 34 • 24ga & 22ga



**Cool Dark Bronze**  
SRI: 32 • 24ga & 22ga



**Cool Matte Black**  
SRI: 29 • 24ga & 22ga



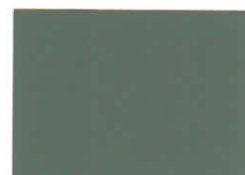
**Cool Tahoe Blue**  
SRI: 33 • 24ga & 22ga



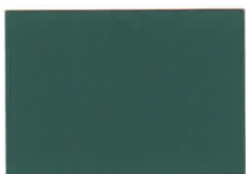
**Cool Regal Blue**  
SRI: 29 • 24ga & 22ga



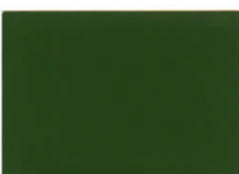
**Cool Marine Green**  
SRI: 47 • 24ga & 22ga



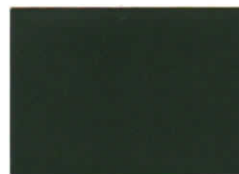
**Cool Hemlock Green**  
SRI: 35 • 24ga & 22ga



**Cool Jade Green**  
SRI: 29 • 24ga & 22ga



**Cool Leaf Green**  
SRI: 30 • 24ga & 22ga



**Cool Forest Green**  
SRI: 29 • 24ga & 22ga

## Vintage® - Premium Finish (Subject to up-charge) SRI: 22 • 24ga

Vintage coated metal is an innovative coating process over a TruZinc® G90 metallic coated steel surface producing a beautiful, durable, aged-metallic finish.



Dura Tech™ coatings combine the corrosion protection of a ZINCALUME® substrate with a highly durable resin formulation and cool pigment technology to provide excellent color retention and reduces the demand for energy.



## DURA TECH™ mx - Premium Fluoropolymer (PVDF) Pearlescent Coating (Subject to up-charge)



**Cool Metallic Silver**  
SRI: 65 • 24ga & 22ga



**Cool ZACTique® II**  
SRI: 39 • 24ga & 22ga



**Cool Metallic Champagne**  
SRI: 54 • 24ga & 22ga



**Cool Metallic Copper**  
SRI: 53 • 24ga & 22ga

SRI=Solar Reflective Index. SRI values in accordance with ASTM E1980 and are based on independent testing. Cool Roof Rating Council (CRRC) performance values (for CA Title 24, Energy Star) are based on color families and will differ from those listed above. Please visit [www.aepspan.com](http://www.aepspan.com) for additional information. \*Clear acrylic coated